



Sudbury Reservoir Watershed  
2021 Public Access Plan Update  
Remote Public Information Meeting #2  
February 2022

# Meeting Logistics

- You will have the opportunity to submit comments on the draft plan until March 23, 2022, at:
  - DCR Public Comments: <http://www.mass.gov/dcr/public-comment>.

Note: content of comments you submit to DCR, along with your name, town, and zip code, will be posted on DCR's website.
- Two ways to ask questions during the meeting
  - Use chat feature
  - Raise your hand using the Teams function, and you will be given permissions to unmute and speak.
- *Please note that this public information meeting will be recorded; the recording will be a public record.*

# Sudbury and Foss Reservoirs are Public Water Supply Reservoirs

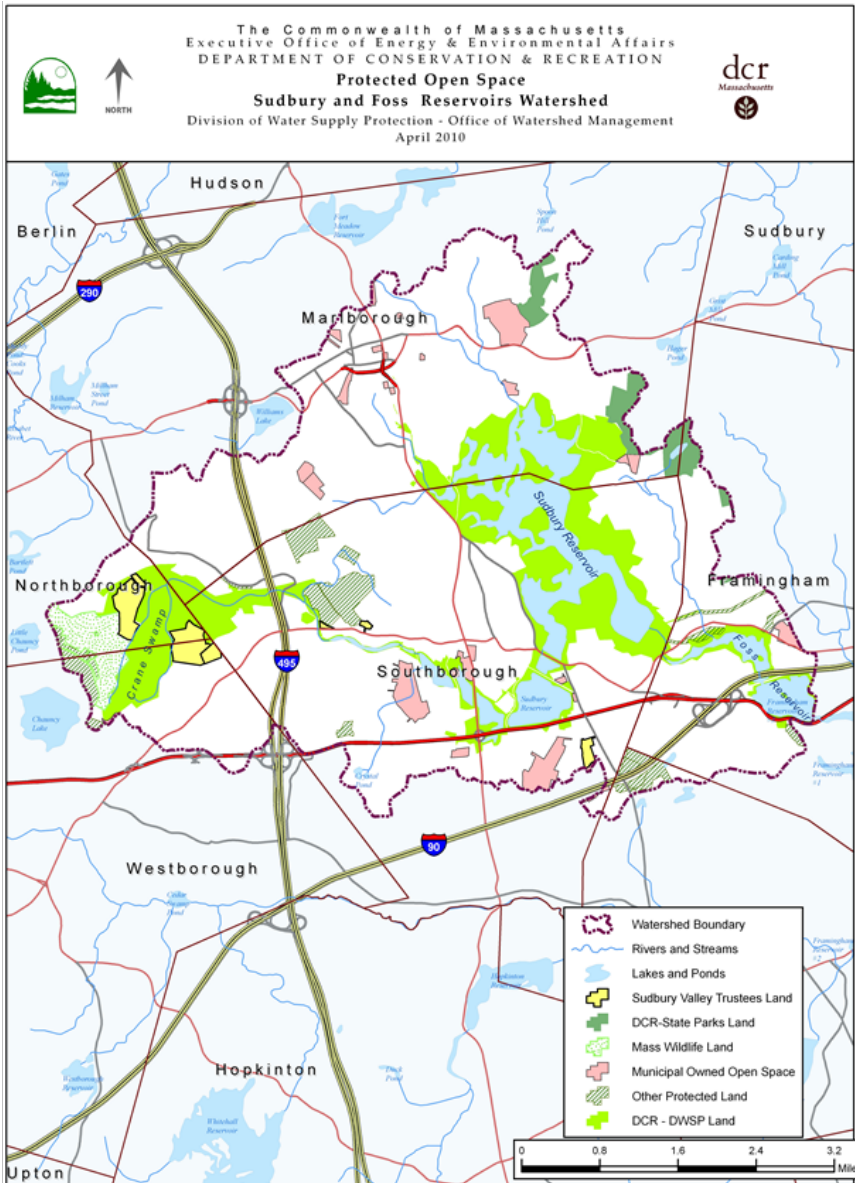
The Sudbury and Foss Reservoirs are the only emergency drinking water source supply for three million residents of Eastern Massachusetts.

There are three emergency conditions that would require the use of the Sudbury and Foss Reservoirs:

- Wachusett Reservoir is declared non-potable.
- There is an inability to convey water from the Wachusett Reservoir to the MWRA distribution system.
- A serious drought occurs.

Depending on the situation, the Sudbury and Foss Reservoirs would be used either as a primary source of water supply, as a pass through of Wachusett Reservoir water, or as a supplemental source to the Quabbin and Wachusett Reservoirs

Although not a primary supply, DCR views the protection of this resource as an important objective in its overall watershed management strategy



DCR DWSP ownership 2,381 acres

# The Purpose of DCR DWSP Public Access Plans

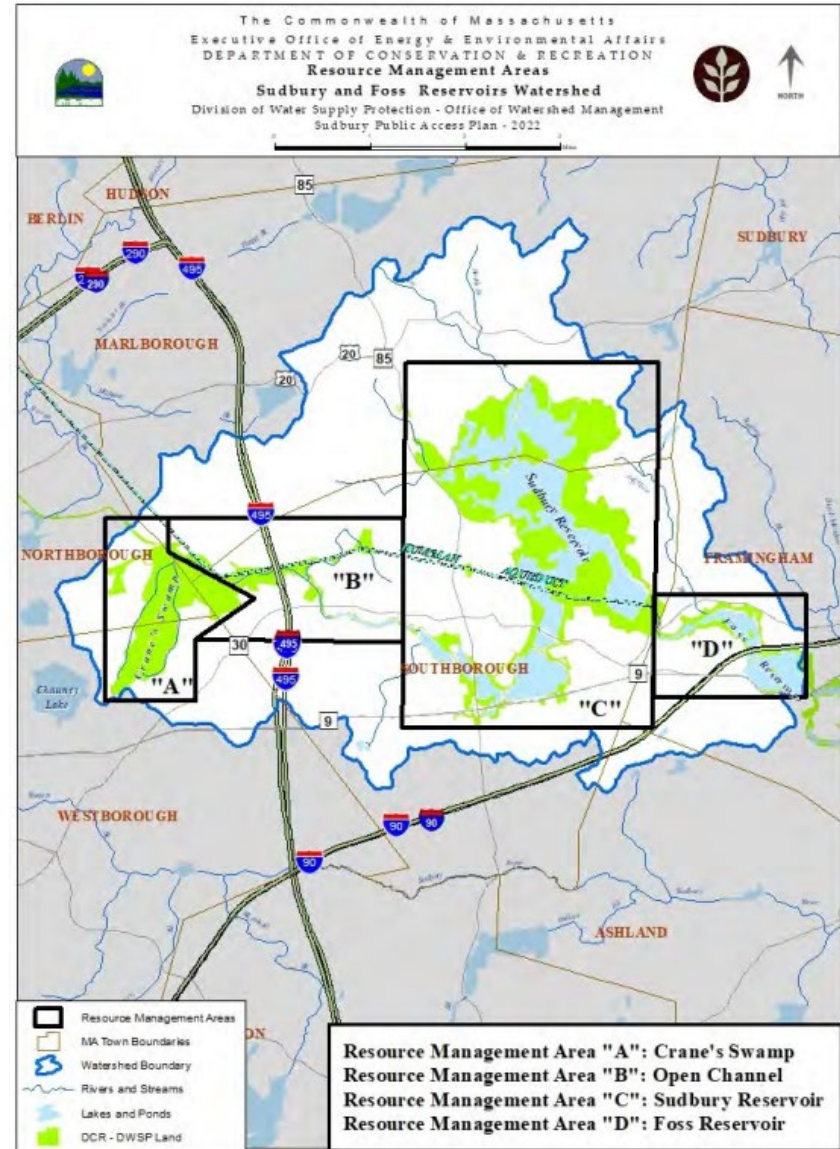
- To establish policies and develop an implementation strategy that controls the impacts to water quality from human activities on Department of Conservation and Recreation, Division of Water Supply Protection lands
- The federal Safe Drinking Water Act and Amendments, state drinking water regulations, and the Department of Conservation and Recreation's Watershed Protection Regulations (313 CMR 11.00) require that public access on drinking water supply lands must be managed to minimize the risk of waterborne disease and to control other human impacts.
- The primary function of these water supply lands is to protect and provide high quality drinking water for current and future generations.
- DCR public access plans detail management decision rationale and outline programs used to control access to these lands and waters.

The first Sudbury Public Access Plan was written in 1994 and subsequent updates were completed in 2002 and 2010.

DWSP Public Access Plans are reviewed and updated approximately every 10 years on a rotating watershed basis.

The review takes into consideration new recreational activities, staff observation of current impacts and updated research.

## 2022 revised resource management areas





# 2022 Major Policy Changes

- Access expanded in areas closer to the Sudbury Dam (off Route 30)
- This area includes the “Peninsula Trail” which will be created through an agreement with Southboro Trails Committee and MWRA. *No dogs or bikes allowed.*
- Lands surrounding Foss Reservoir to be opened for passive recreation.
- Hunting allowed- with restrictions.
- Inclusion of the prohibition on “magnet fishing”.



Access will be allowed on future connecting trail segment with approved agreements in place.



No public access in posted areas and on MWRA aqueduct.



Table 3. Summary of Public Access Policy Updates

Activity	2010 DWSP Policy	2022 Policy Update
Advertising	Not identified	Added as prohibited activity
Alcohol (possession of)	Prohibited	No change
Bicycling	Prohibited	No change
Boating, Canoeing, Kayaking, Boat Fishing, Paddleboarding	Prohibited	Clarified to include Paddleboarding
Camping	Prohibited	No change
Commercial Activities	Not identified	Added as prohibited activity
Cross-Country Skiing	Allowed with restrictions	Change – allowed in all areas that allow walking and snowshoeing.
Dogs/Other Animals	Prohibited	No change
Fishing Derbies	Not identified	Added as prohibited activity (without written permission)
Foraging	Not identified	Added as allowed and by regulation only for the collection of edible plants in a non-disruptive manner and for non-commercial use.
Geocaching and Related Activities	Allowed. Policy identified	No change
Group Activities	Not identified	Added as allowed with restrictions on group size without a permit
Horseback Riding	Prohibited	No change
Hunting	Prohibited	Change-allowed with restrictions
Ice Fishing/Ice Skating	Prohibited	No change
Marking or Cutting - Trails/Roads	Not identified	Added as prohibited activity with the exception of Boroughs Trail Loop with written agreement
Metal Detecting/Magnet Fishing	Prohibited	Clarified - addition of Magnet Fishing
Night Access	Prohibited	No change
ORV (off road vehicle) Riding (including ATVs)	Prohibited	Clarified - Replaced ATV with ORV
Organized Sports	Not identified	Added as prohibited activity without written permission of DWSP
Shore and Stream Fishing	Allowed with restrictions	No change
Sledding	Not identified	Added as prohibited activity
Snowmobiling	Prohibited	No change
Swimming	Prohibited	No change
Target Shooting	Not identified	Added as prohibited activity
Trapping	Prohibited	Change - allowed with restrictions
Unmanned Aerial Vehicles (UAVs, drones)/Underwater drones	Not identified	Added as prohibited activity. Landing and taking off from DWSP land prohibited without written permission, or in an emergency
Wading	Not identified	Added as prohibited activity
Walking/Snowshoeing	Allowed with restrictions	No change
Wildlife Viewing/Bird Watching	Not identified	Added as allowed activity

Table 2. DWSP Sudbury and Foss Reservoirs Public Access Policies – 2022

Activity	Crane Swamp “A”	Open Channel “B”	Sudbury Reservoir “C”	Foss Reservoir “D”
Advertising	⊘	⊘	⊘	⊘
Alcohol (possession of)	⊘	⊘	⊘	⊘
Bicycling	⊘ <sup>1</sup>	⊘ <sup>2</sup>	⊘ <sup>3</sup>	⊘
Boating, Canoeing, Kayaking, Boat Fishing, Paddleboarding	⊘	⊘	⊘	⊘
Camping	⊘	⊘	⊘	⊘
Commercial Activities	⊘ <sup>7</sup>	⊘ <sup>7</sup>	⊘ <sup>7</sup>	⊘
Cross-country Skiing	□	□	□	□
Dogs/Other Animals	⊘	⊘	⊘	⊘
Fishing Derbies	⊘	⊘	⊘	⊘
Foraging	□ <sup>5</sup>	□ <sup>5</sup>	□ <sup>5</sup>	□ <sup>5</sup>
Geocaching and Related Activities	□ <sup>9</sup>	□ <sup>9</sup>	□ <sup>9</sup>	□
Group Activities (organized walks, tour buses, etc.)	□ <sup>4</sup>	□ <sup>4</sup>	□ <sup>4</sup>	□ <sup>4</sup>
Horseback Riding	⊘	⊘	⊘	⊘
Hunting	□ <sup>8</sup>	□ <sup>8</sup>	□ <sup>8</sup>	□ <sup>8</sup>
Ice Fishing/Ice Skating	⊘	⊘	⊘	⊘
Marking or Cutting Trails/Roads	⊘	⊘	⊘	⊘
Metal Detecting/Magnet Fishing	⊘	⊘	⊘	⊘
Night Access	⊘	⊘	⊘	⊘
ORV (off road vehicle) Riding (including ATVs)	⊘	⊘	⊘	⊘
Organized Sports	⊘	⊘	⊘ <sup>10</sup>	⊘
Shore and Stream Fishing	□	□	□	□
Sledding	⊘	⊘	⊘	⊘
Snowmobiling	⊘	⊘	⊘	⊘
Swimming	⊘	⊘	⊘	⊘
Target Shooting	⊘	⊘	⊘	⊘
Trapping	□ <sup>8</sup>	□ <sup>8</sup>	□ <sup>8</sup>	□ <sup>8</sup>
Unmanned Aerial Vehicles/Underwater Drones	⊘ <sup>6</sup>	⊘ <sup>6</sup>	⊘ <sup>6</sup>	⊘ <sup>6</sup>
Wading	⊘	⊘	⊘	⊘
Walking/Snowshoeing	□	□	□	□
Wildlife/Bird Watching	□	□	□	□

⊘ Prohibited

□ Allowed - general restrictions

□<sup>#</sup> Specific Restrictions

#### General Restrictions:

- ❑ General public access within the Sudbury and Foss Reservoirs Watershed System is restricted to one hour before sunrise to one hour after sunset through gates or designated (posted) areas only. Any activity which injures or defaces the property of the Commonwealth is strictly prohibited. This chart is based on the Watershed Protection Regulations 313 CMR 11.00. Littering is strictly prohibited. Carry in/Carry out. Do not feed wildlife. No dogs allowed.

#### Specific Restrictions:

- <sup>1</sup> The Boroughs Trail Loop has been developed through an area within the Crane Swamp Public Access Management Area. Dogs and bicycles are not permitted on the sections of trail on DWSP land in this area.
- <sup>2</sup> The Boroughs Trail Loop has been developed along the Open Channel in the Open Channel Management Area. Dogs and bicycles are not permitted on the sections of trail on DWSP land in this area.
- <sup>3</sup> The Boroughs Trail Loop (Peninsula Trail) has been developed in the Sudbury Reservoir Management Area. Dogs and bicycles are not permitted on the sections of trail on DWSP land in this area.
- <sup>4</sup> Allowed without a permit for groups of less than 25 individuals. Permit required for group of more than 25 people.
- <sup>5</sup> Foraging is allowed only for the collection of edible plants, such as blueberries and mushrooms, in a non-disruptive manner and for non-commercial use.
- <sup>6</sup> Takeoff or landing of Unmanned Aerial Vehicles from DWSP land prohibited except by written permission from DWSP. Underwater drones are prohibited.
- <sup>7</sup> Prohibited except by written permission from DWSP.
- <sup>8</sup> Hunting and trapping are allowed with a DCR Permit provided the activities are consistent with MassWildlife seasons and regulations. See [www.mass.gov/info-details/sudbury-reservoir-watershed-deer-hunt](http://www.mass.gov/info-details/sudbury-reservoir-watershed-deer-hunt) for up-to-date information regarding permits.
- <sup>9</sup> Geocaching and Letterboxing are allowed provided DCR and DWSP guidelines are followed.
- <sup>10</sup> Organized sports allowed at 911 Field through a lease with the Town of Southborough.

# Sudbury Public Access Plan Timeline

Fall 2019: Sudbury Reservoir Watershed Public Access Survey data collected

Plan activities put on hold due to Covid-19

September 2021: Public Listening Session held via remote platform

Fall 2021: Writing of Draft Plan and distribution to stakeholders/public for review

**Tonight: Public Meeting on Draft Public Access Plan**

Up to March 23<sup>rd</sup>: Comments accepted on plan

After March 23<sup>rd</sup>: Plan revisions (if needed)

Spring 2022: Plan finalized and adopted

Remainder 2022: Field Changes such as signage changes implemented

## Additional Information

- Recording and tonight's slide deck will be available at:

- [www.mass.gov/dcr/past-public-meetings](http://www.mass.gov/dcr/past-public-meetings)

- If you have comments on this project:

- *Submit online:* [www.mass.gov/dcr/public-comment](http://www.mass.gov/dcr/public-comment)

- *Deadline: Wednesday, March 23, 2022*

*Please note: the contents of comments submitted to DCR, including your name, town and zip code, will be posted on DCR's website. Additional contact information provided, notably email address, will only be used for outreach on future updates to the subject project or property.*

- If you wish to subscribe to a DCR general information or project-related listserv: contact DCR's Office of Community Relations via email at [mass.parks@mass.gov](mailto:mass.parks@mass.gov)



# Commonwealth of Massachusetts

Governor

**Charles D. Baker**

Lieutenant Governor

**Karyn E. Polito**

Energy and Environmental Secretary

**Kathleen A. Theoharides**

Department of Conservation and Recreation Acting Commissioner

**Stephanie Cooper**



# Questions and Comments?

Please state name, address and affiliation, if any.