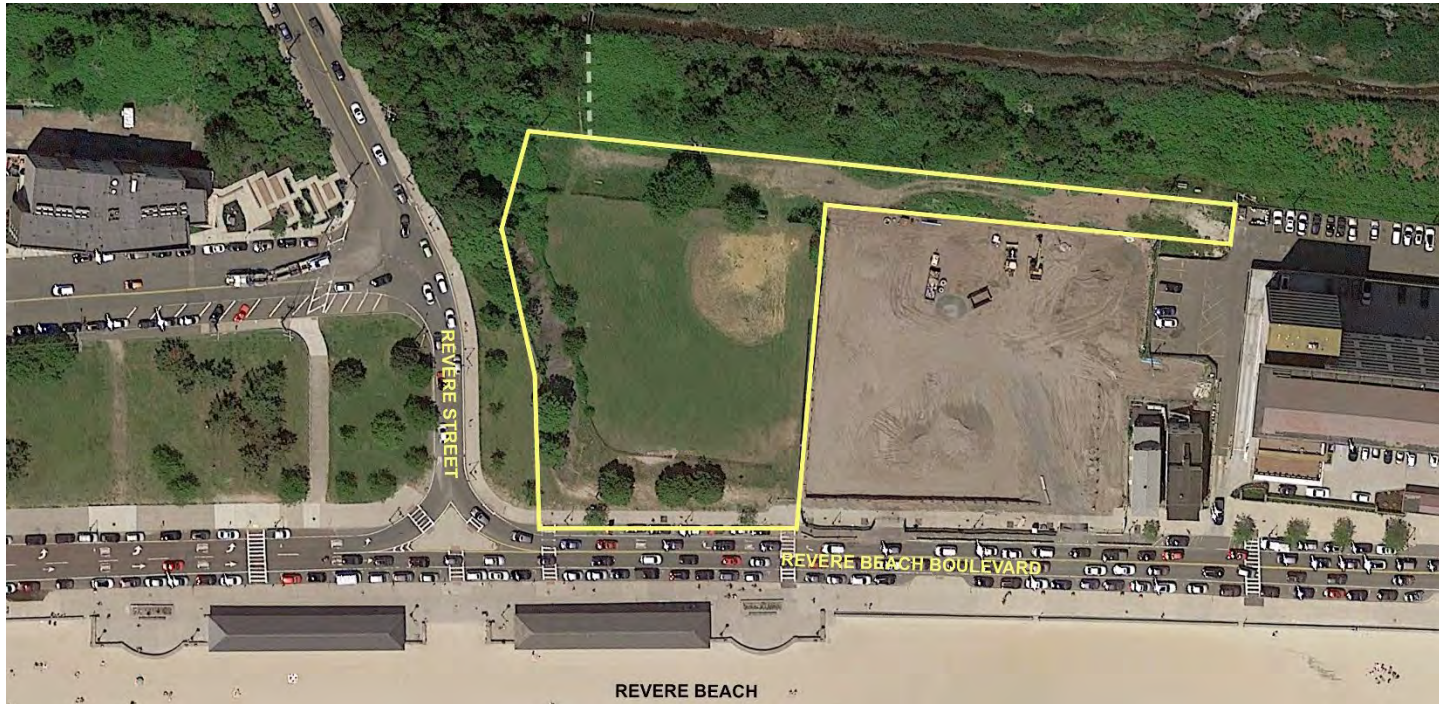


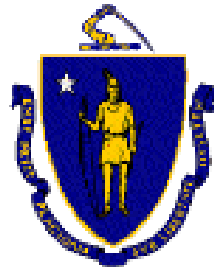
Sullivan Park



DCR Virtual Public Meeting #3

Thursday, November 10, 2022

Design Presentation Prepared for Online Viewing



Commonwealth of Massachusetts

Governor

Charles D. Baker

Lieutenant Governor

Karyn E. Polito

Energy and Environmental Secretary

Bethany A. Card

Department of Conservation and Recreation Commissioner

Douglas J. Rice



DCR Mission Statement

*To protect, promote, and enhance our
commonwealth of natural, cultural
and recreational resources
for the well-being of all.*

Meeting Logistics

- You will have the opportunity to submit comments over the course of the next two weeks at:
 - DCR Public Comments
<https://www.mass.gov/forms/dcr-public-comments>
- Two ways to ask questions during the meeting
 - Use chat feature
 - Raise your hand using the Zoom function, and you will be given permission to unmute and speak.
- *Please note that this public information meeting will be recorded; the recording will be a public record.*

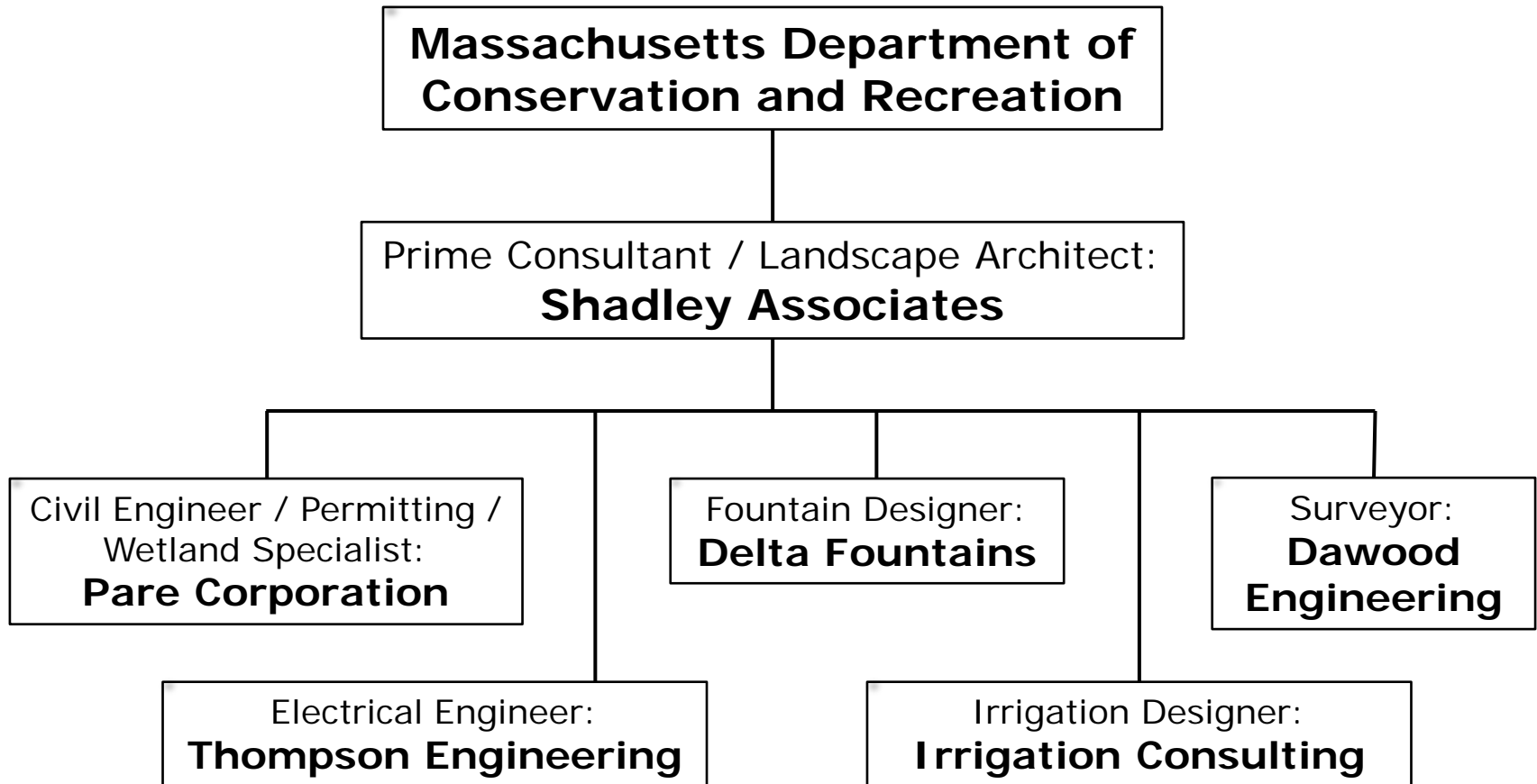
Purpose of Presentation

*To present the final design and updated
schedule for bidding and construction
for Sullivan Park,
based on your prior feedback.*

Agenda

1. Introductions
2. Team & Update
3. Final Design Plan
4. Cost Investment & Schedule
5. Questions

Project Team



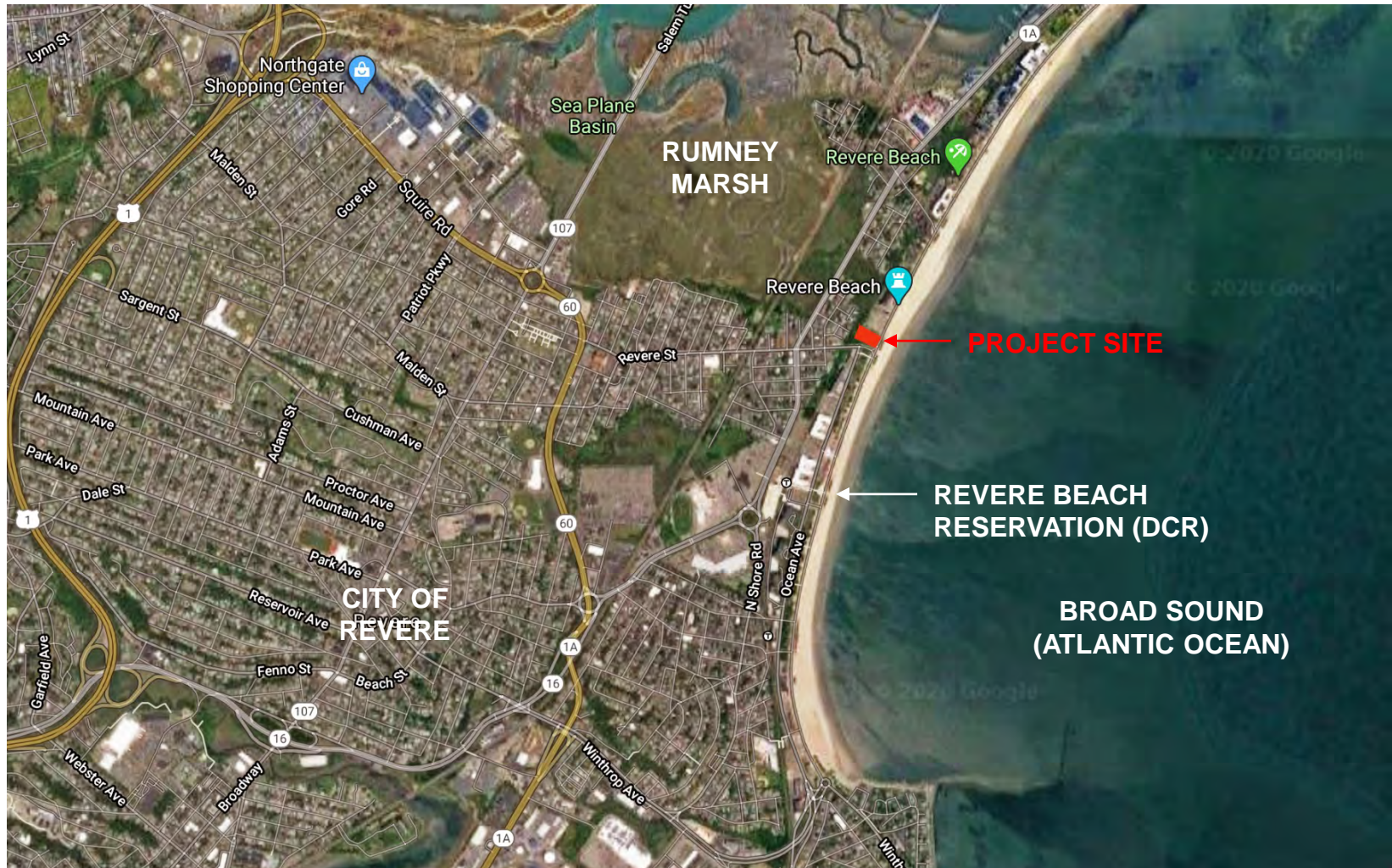
Project Update

January 2020	DCR hires Shadley Associates
July 2020	Public Meeting #1 to present Concept Design Alternatives
November 2021	Public Meeting #2 to present revised Design Concept based on public feedback
January 2022	Permitting Finalized
November 10, 2022	Public Meeting #3

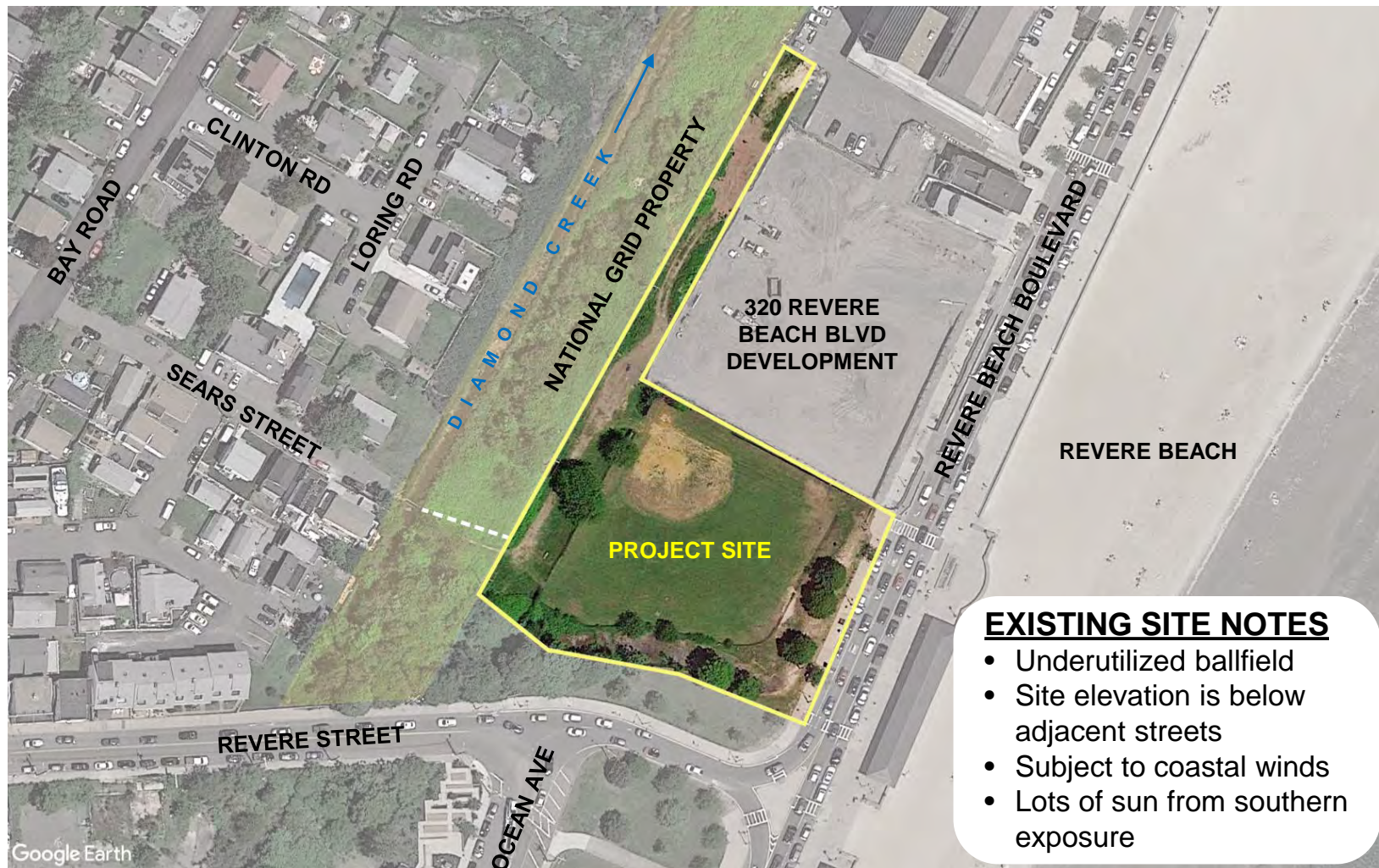
Project Goals

- Create an inviting community park
- Design for universal accessibility
- Provide a variety of activity choices
- Encourage physical exercise and movement
- Accommodate social interaction in a variety of spaces
- Re-introduce native vegetation for shade, habitat, and climate resiliency

Site Context



Project Site



Comments from Public Meetings

We heard your most frequent comments requesting:

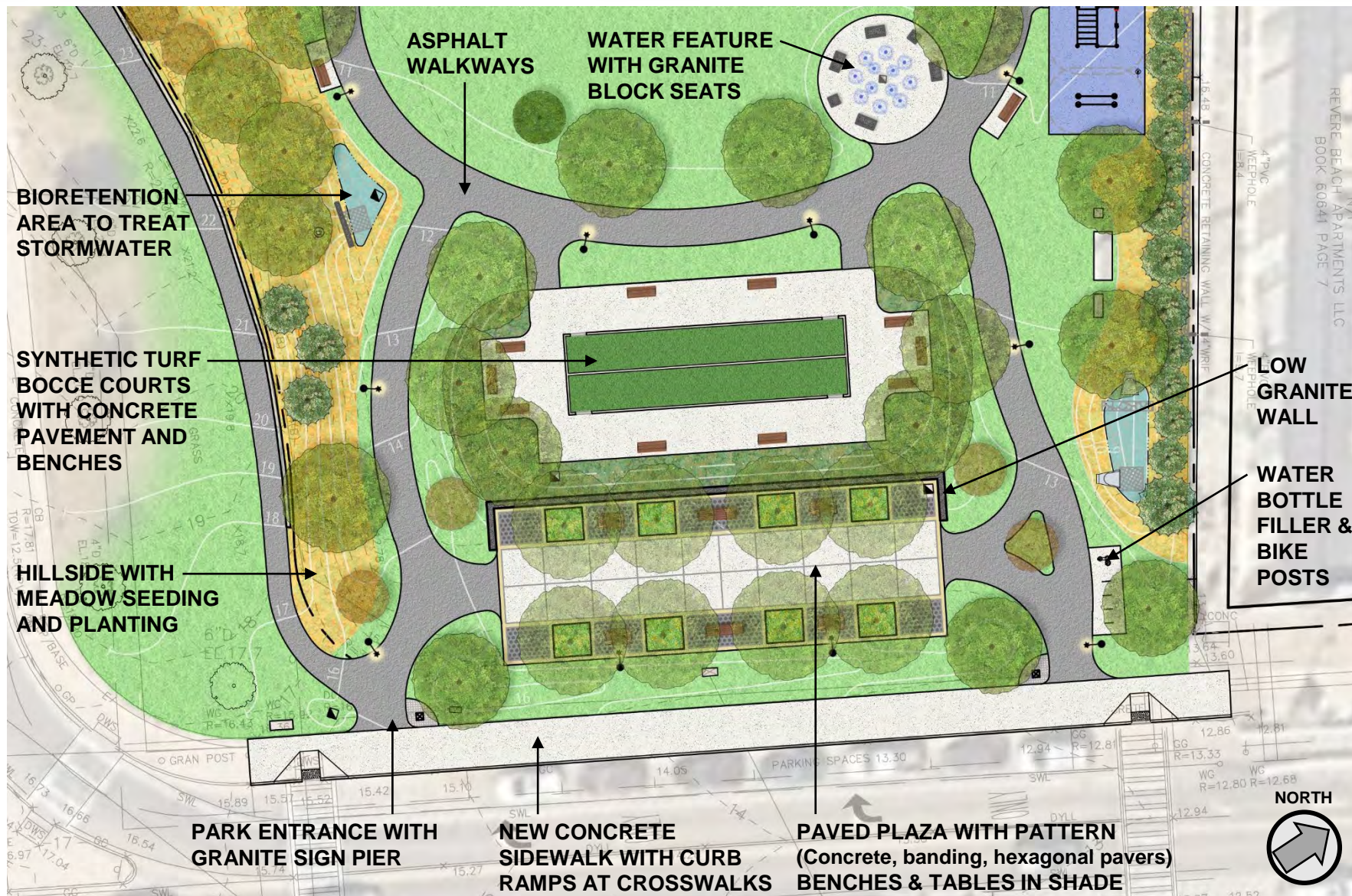
- Bocce courts with seating
- Water feature that is interactive for kids
- A variety of fitness opportunities
- Large lawn area for activities and events
- Lots of walkways with benches



SULLIVAN PARK



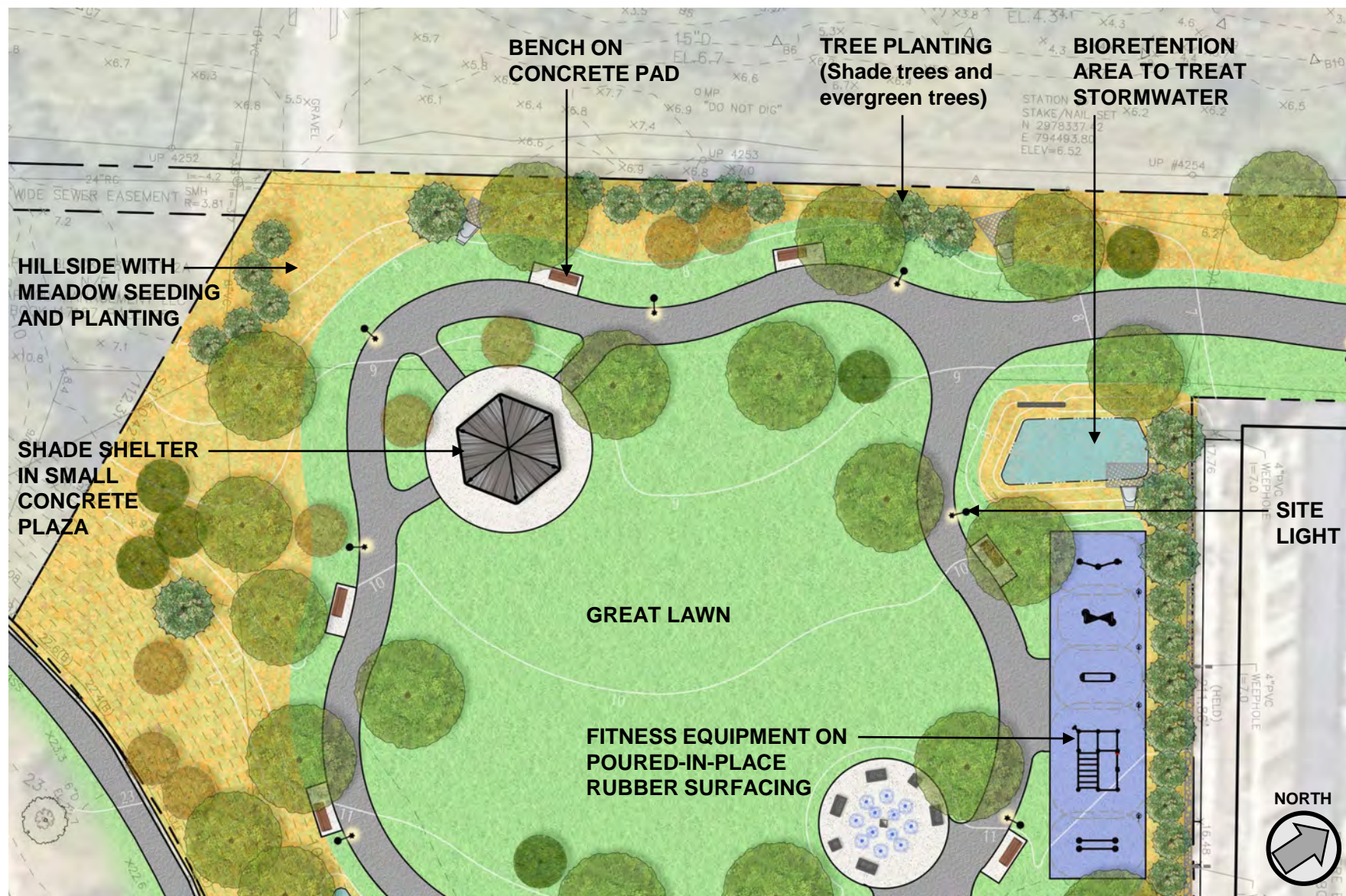
SULLIVAN PARK



SULLIVAN PARK



SULLIVAN PARK



SULLIVAN PARK



Bench with Back

- 6' long bench
- Metal arms and legs powdercoated black
- Ipe wood seat and back
- Benches match existing along Revere Beach



Backless Bench at Plaza

- 8' long bench
- Metal arms and legs powdercoated black
- Ipe wood seat



Table & Chairs at Plaza

- 36" square table with two fixed seats
- Checker / chess board top
- Metal arms and legs powdercoated black
- Ipe wood top and seat / back



Bicycle Parking

- Galvanized steel bicycle parking post
- Posts match those at Revere Beach



Trash Receptacle

- Black receptacle with liner
- Built-in rain cover
- 33-gallon capacity



Water Bottle Filler

- Outdoor station with bottle filler
- Powdercoated black
- Accessible side drinking fountain extension
- Pet drinking station at base
(DCR parks welcome leashed dogs)



Shade Shelter

- Hexagon Shape with Cupola
- Material: Steel with powdercoat finish
- Roof: Multi-Rib Metal Roof, 12:12 slope, Sealed wood roof deck (underside)
- Size: 24'-0" wide x 21'-0" tall
- Black metal frame with light colored roof to reflect the sun (for Urban Heat Island Effect mitigation)
- Attachments: Interior light, 2 electrical receptacles
Weathervane on cupola



Example of Copper Weathervane

Outdoor Fitness Equipment



Manufacturer's Rendering of Proposed Fitness Equipment



Site Light

- DCR Standard Light Fixture
- Ornamental style to match the historic character of the Revere Beach Reservation
- LED Light
- Powdercoated Green
- Height: 19'-10 ¾" overall

Plant List

SYM	QTY	BOTANICAL NAME	COMMON NAME
<u>DECIDUOUS TREES</u>			
AR	12	Acer rubrum	Red Maple
CO	3	Celtis occidentalis	Common Hackberry
NS	7	Nyssa sylvatica	Black Gum
QA	5	Quercus alba	White Oak
QP	4	Quercus palustris	Pin Oak
TA	8	Tilia americana	American Linden
TA1	4	Tilia americana	American Linden
<u>ORNAMENTAL TREES</u>			
AA	12	Amelanchier arborea	Downy Serviceberry
BN	8	Betula nigra	River Birch
<u>EVERGREEN TREES</u>			
CT	8	Chamaecyparis thyoides	Atlantic White Cedar
JV	8	Juniperus virginiana	Eastern Red Cedar
PR	6	Pinus rigida	Pitch Pine
TO	16	Thuja occidentalis	American Arborvitae
<u>SHRUBS</u>			
IG	5	Ilex glabra	Inkberry Holly
MP	6	Myrica pensylvanica	Northern Bayberry
RV	15	Rosa virginiana	Virginia Rose
<u>ORNAMENTAL GRASSES & GROUND COVER</u>			
ES	240	Eragrostis spectabilis	Purple Lovegrass
JH	260	Juniperus horizontalis 'Bar Harbor'	Bar Harbor Creeping Juniper
PV	200	Panicum virgatum	Switch Grass
RA	300	Rhus aromatica 'Gro-Low'	Gro-Low Fragrant Sumac
SS	120	Schizachyrium scoparium	Little Bluestem

Native Planting for Shade and Habitat

- 63 shade trees & ornamental trees
- 38 evergreen trees
- 101 total new trees
- 10 existing trees removed (mostly invasive)



Commonwealth Investment

- Park improvements estimated at \$2.75 million.
- Project is in the DCR's 5-year Capital Plan.
- Programmed for FY23 construction start.

Project Schedule

Public Comment Period is November 10-24, 2022

Bidding is anticipated in winter of 2022-2023

Construction start is anticipated in Spring of 2023

Comments & Questions



SULLIVAN PARK

Additional Information

- Recording and tonight's slide deck will be available at:
 - www.mass.gov/dcr/past-public-meetings
- If you have comments on this project:
 - *Submit online:* www.mass.gov/dcr/public-comment
 - *Deadline:* **Thursday, November 24, 2022**

Please note: the contents of comments submitted to DCR, including your name, town and zip code, will be posted on DCR's website. Additional contact information provided, notably email address, will only be used for outreach on future updates to the subject project or property.

- If you wish to subscribe to a DCR general information or project-related listserv: contact DCR's Office of Community Relations via email at mass.parks@mass.gov

Thank You!



SULLIVAN PARK