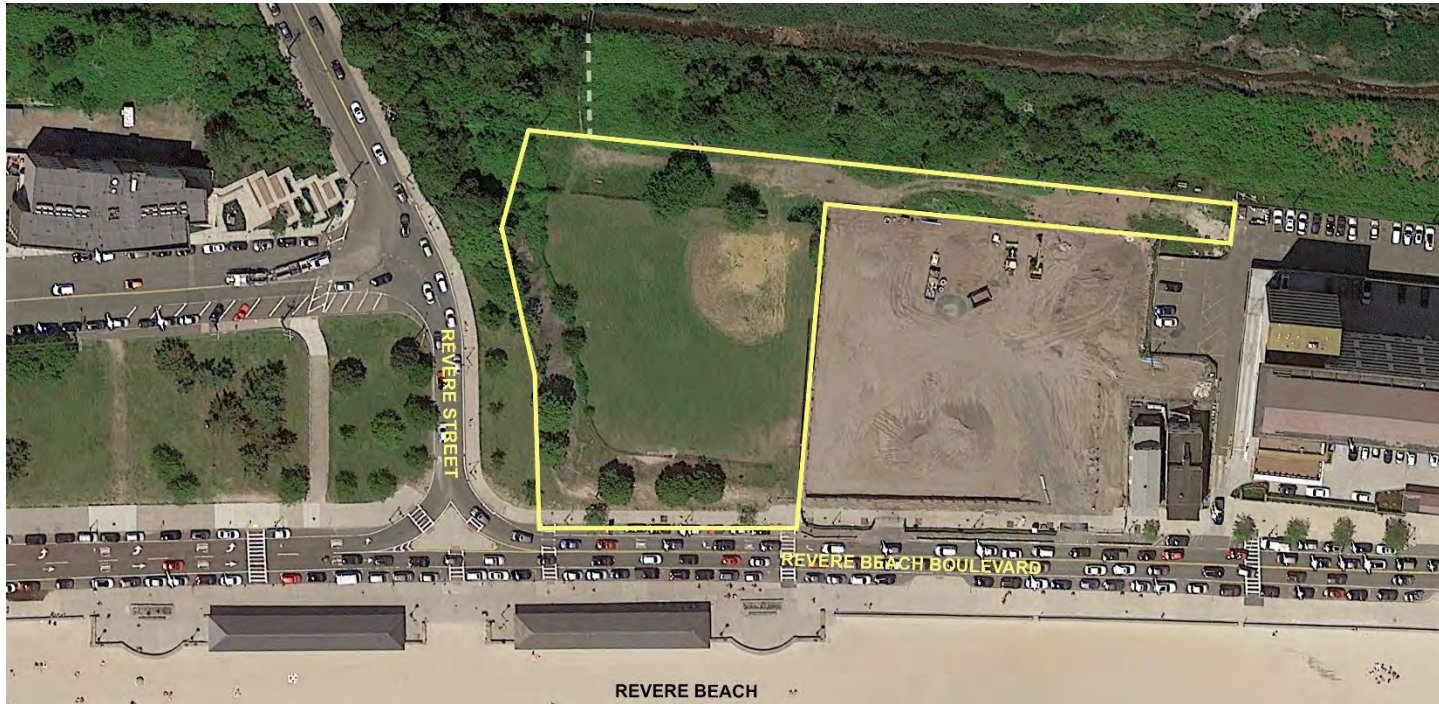


Sullivan Park



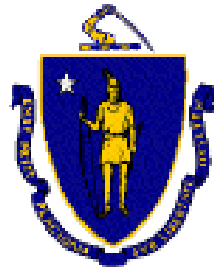
DCR Virtual Public Meeting #2

Monday, November 29, 2021

Design Presentation Prepared for Online Viewing

Meeting Logistics

- You will have the opportunity to submit comments over the course of the next two weeks at:
 - DCR Public Comments
<https://www.mass.gov/forms/dcr-public-comments>
- Two ways to ask questions during the meeting
 - Use chat feature
 - Raise your hand using the Teams function, and you will be given permission to unmute and speak.
- *Please note that this public information meeting will be recorded; the recording will be a public record.*



Commonwealth of Massachusetts

Governor

Charles D. Baker

Lieutenant Governor

Karyn E. Polito

Energy and Environmental Secretary

Kathleen A. Theoharides

Department of Conservation and Recreation Acting Commissioner

Stephanie Cooper



DCR Mission Statement

*To protect, promote, and enhance our
commonwealth of natural, cultural
and recreational resources
for the well-being of all.*

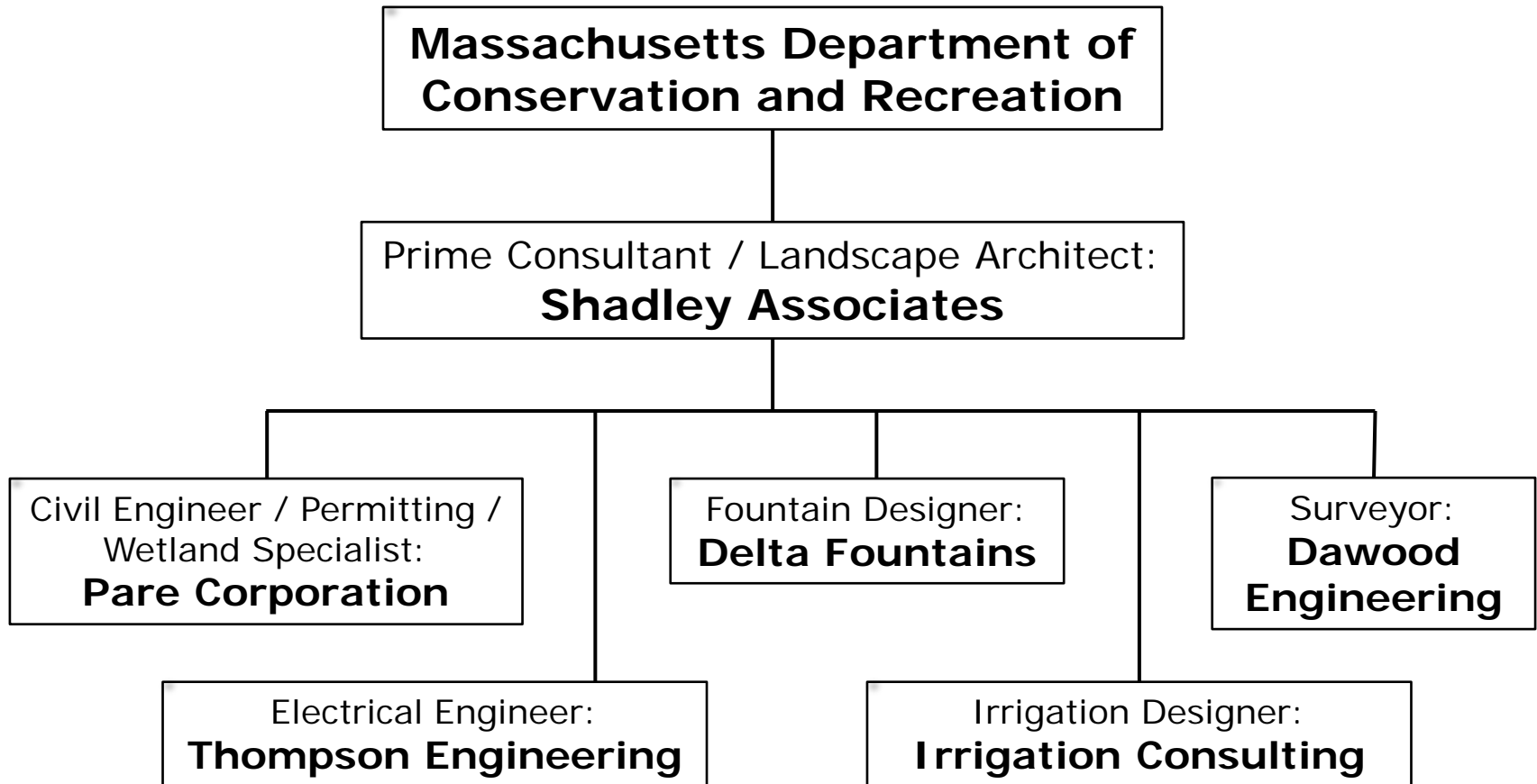
Purpose of Presentation

To present the design and updated project information for Sullivan Park, based on your prior feedback.

Agenda

1. Project Team & Update
2. Final Design Plan
3. Cost Investment & Schedule
4. Additional Information

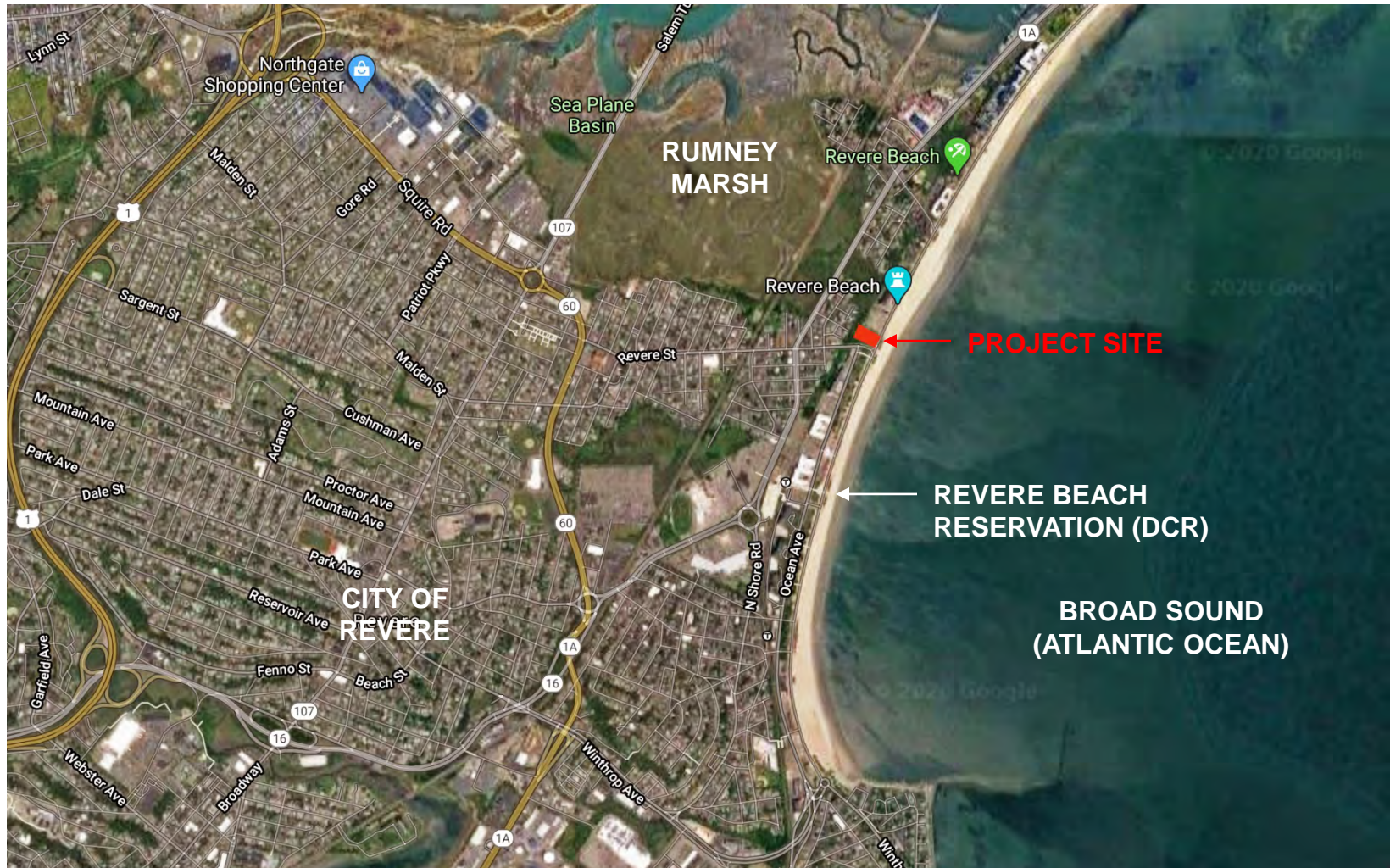
Project Team



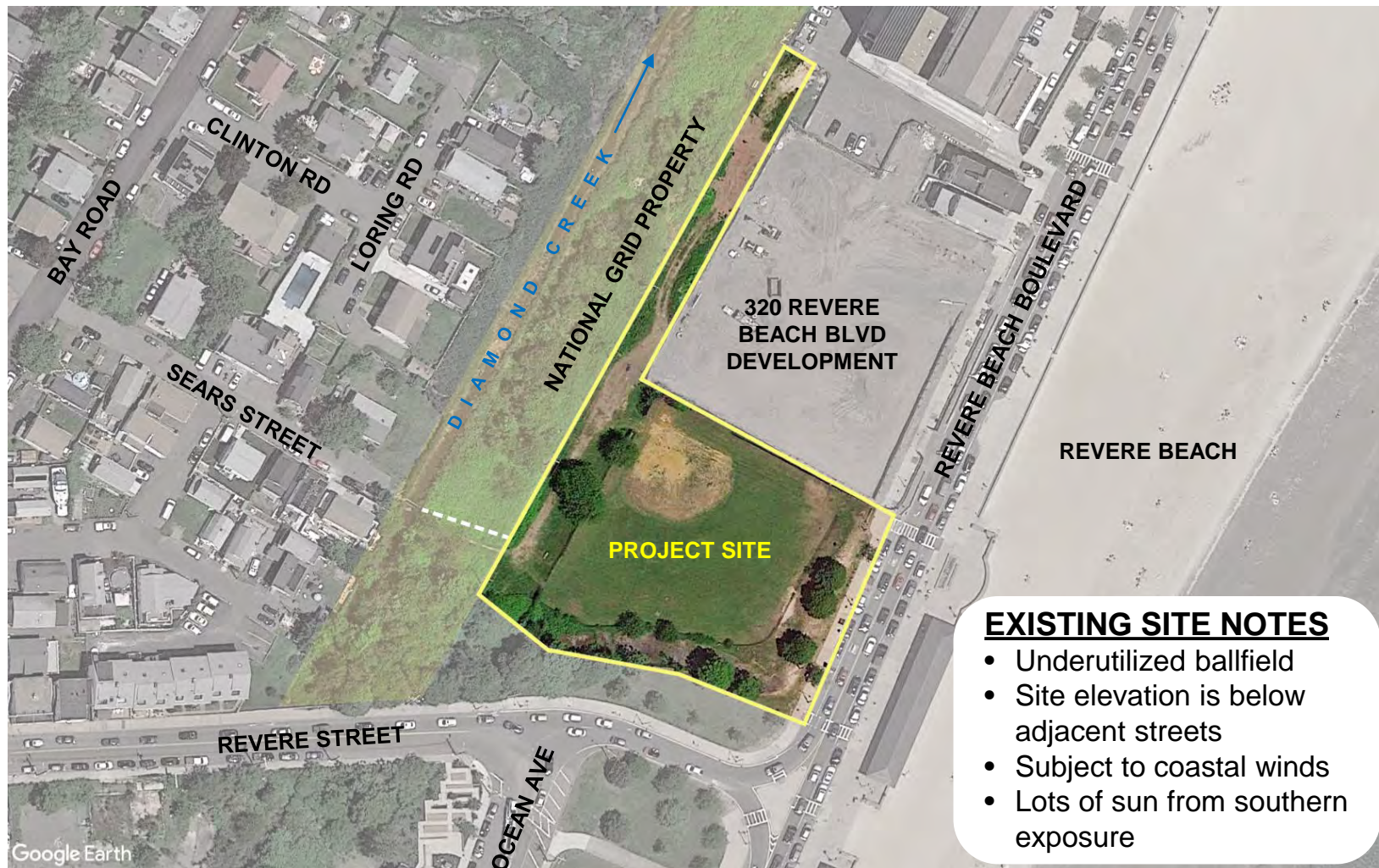
Project Update

January 2020	DCR hires Shadley Associates
July 2020	Public Meeting #1 to present Concept Design Alternatives
April 2021	25% Construction Documents Completed
June – August	Site Investigation (test pits, borings)
September 2021	50% Construction Documents Completed
November 2021	Public Meeting #2

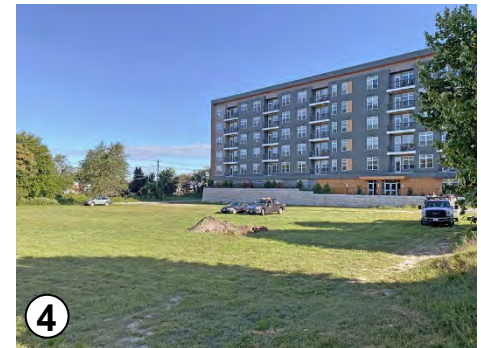
Site Context



Project Site



Existing Conditions



Project Goals

- Create a passive “Community Park”
- Park should be universally accessible and compliant with the Americans with Disabilities Act (ADA)
- Provide a variety of activity choices
- Encourage physical exercise and movement
- Accommodate social interaction in a variety of spaces
- Re-introduce native vegetation for shade, habitat, and climate resiliency

Concept Design Alternatives

July 2020 Public Meeting



Concept 1



Concept 2

Comments from Public Meeting #1

We heard your most frequent comments requesting:

- Bocce courts with seating
- Water feature that is interactive for kids
- A variety of fitness opportunities
- Large lawn area for activities and events
- Lots of walkways with benches

Final Design

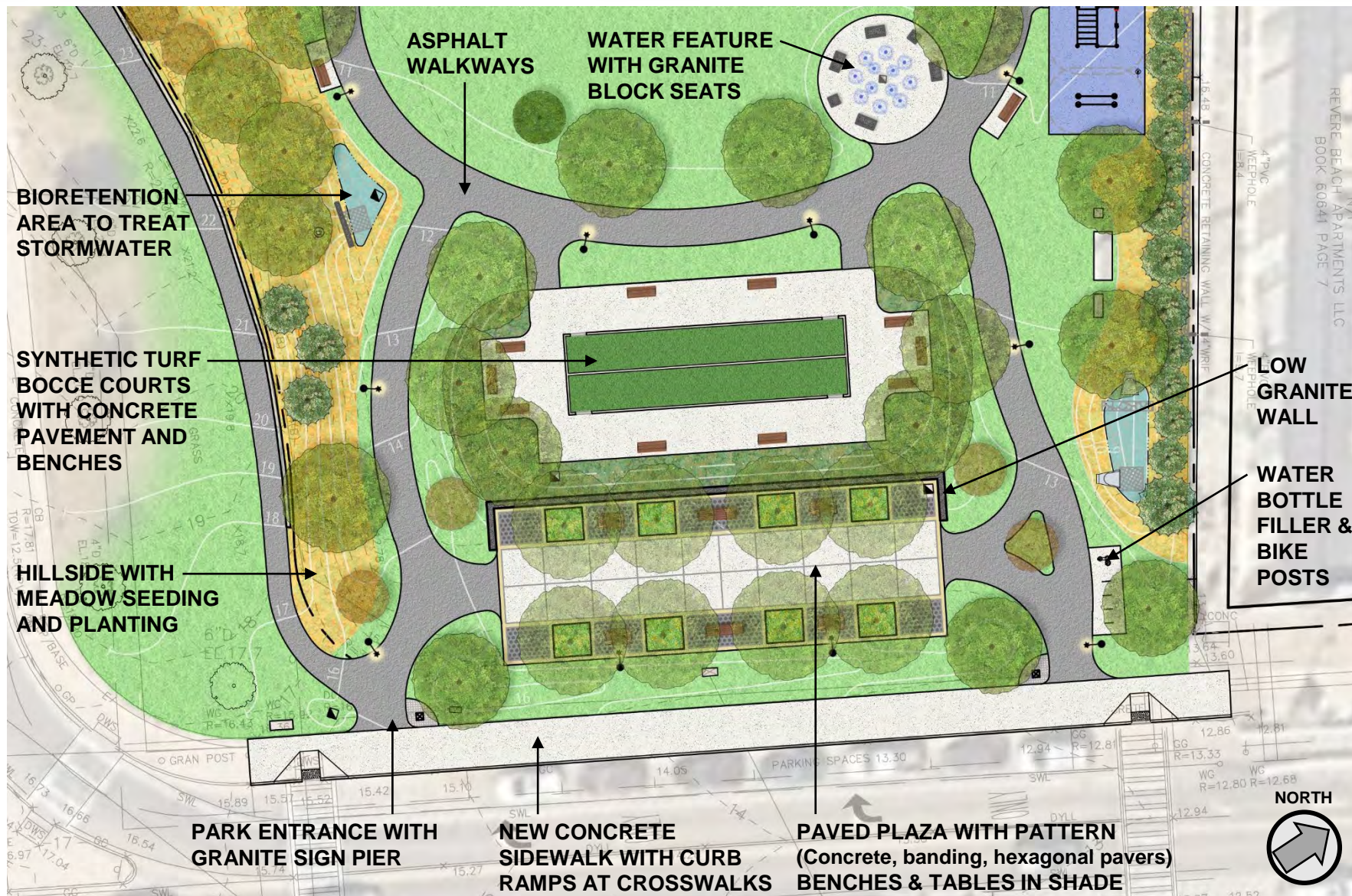
*This plan incorporates the public's
comments and creates diverse spaces.*



SULLIVAN PARK



SULLIVAN PARK



SULLIVAN PARK

Water Feature

- Interactive water feature
- Outer ring includes (8) vertical water jets with (4) fog features
- Inner ring includes (4) shower spray jets with fog
- Maximum water height is 4 feet
- Activator bollard is adjacent to the water feature



Photos of similar water features



Example of Bocce Courts

Example of Paved Plaza with Shade





Bench with Back

- 6' long bench
- Metal arms and legs powdercoated black
- Ipe wood seat and back
- Benches match existing along Revere Beach



Backless Bench at Plaza

- 8' long bench
- Metal arms and legs powdercoated black
- Ipe wood seat



Table & Chairs at Plaza

- 36" square table with two fixed seats
- Checker / chess board top
- Metal arms and legs powdercoated black
- Ipe wood top and seat / back



Bicycle Parking

- Galvanized steel bicycle parking post
- Posts match those at Revere Beach



Trash Receptacle

- Black receptacle with liner
- Built-in rain cover
- 33-gallon capacity

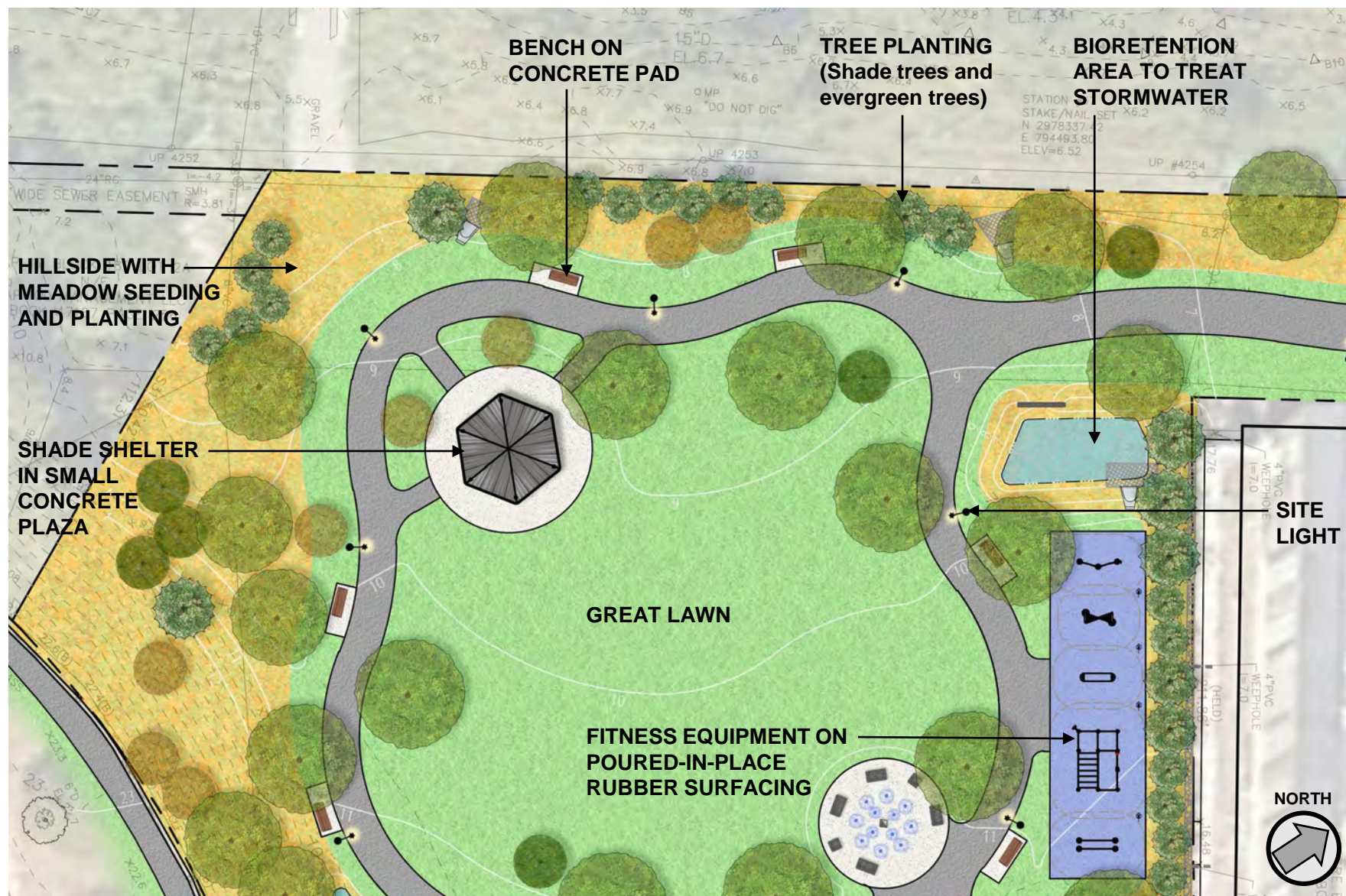


Water Bottle Filler

- Outdoor station with bottle filler
- Powdercoated black
- Accessible side drinking fountain extension
- Pet drinking station at base
(DCR parks welcome leashed dogs)



SULLIVAN PARK



SULLIVAN PARK



Shade Shelter

- Hexagon Shape with Cupola
- Material: Steel with powdercoat finish
- Roof: Multi-Rib Metal Roof, 12:12 slope, Sealed wood roof deck (underside)
- Size: 24'-0" wide x 21'-0" tall
- Black metal frame with light colored roof to reflect the sun (for Urban Heat Island Effect mitigation)
- Attachments: Interior light, 2 electrical receptacles
Weathervane on cupola



Example of Copper Weathervane

Outdoor Fitness Equipment



Manufacturer's Rendering of Proposed Fitness Equipment

Outdoor Fitness Equipment



Push-Up Bars



Parallel Bars



Long Bench



Calisthenics Rack



Net Climber



Site Light

- DCR Standard Light Fixture
- Ornamental style to match the historic character of the Revere Beach Reservation
- LED Light
- Powdercoated Green
- Height: 19'-10 ¾" overall

Plant List

SYM	QTY	BOTANICAL NAME	COMMON NAME
<u>DECIDUOUS TREES</u>			
AR	12	Acer rubrum	Red Maple
CO	3	Celtis occidentalis	Common Hackberry
NS	7	Nyssa sylvatica	Black Gum
QA	5	Quercus alba	White Oak
QP	4	Quercus palustris	Pin Oak
TA	8	Tilia americana	American Linden
TA1	4	Tilia americana	American Linden
<u>ORNAMENTAL TREES</u>			
AA	12	Amelanchier arborea	Downy Serviceberry
BN	8	Betula nigra	River Birch
<u>EVERGREEN TREES</u>			
CT	8	Chamaecyparis thyoides	Atlantic White Cedar
JV	8	Juniperus virginiana	Eastern Red Cedar
PR	6	Pinus rigida	Pitch Pine
TO	16	Thuja occidentalis	American Arborvitae
<u>SHRUBS</u>			
IG	5	Ilex glabra	Inkberry Holly
MP	6	Myrica pensylvanica	Northern Bayberry
RV	15	Rosa virginiana	Virginia Rose
<u>ORNAMENTAL GRASSES & GROUND COVER</u>			
ES	240	Eragrostis spectabilis	Purple Lovegrass
JH	260	Juniperus horizontalis 'Bar Harbor'	Bar Harbor Creeping Juniper
PV	200	Panicum virgatum	Switch Grass
RA	300	Rhus aromatica 'Gro-Low'	Gro-Low Fragrant Sumac
SS	120	Schizachyrium scoparium	Little Bluestem

Native Planting for Shade and Habitat

- 63 shade trees & ornamental trees
- 38 evergreen trees
- 101 total new trees
- 10 existing trees removed (mostly invasive)



Commonwealth Investment

- Park improvements estimated at \$2.75 million.
- Project is in the DCR's 5-year Capital Plan.
- Programmed for FY23 construction start.

Project Schedule

Nov 29 – Dec 13, 2021	Public Comment Period
December 1, 2021	Revere Conservation Commission Hearing (permitting)
March 11, 2022	Final Documents for Bidding
March 2022 – June 2023	Bidding and Construction

Comments & Questions



Additional Information

- Recording and tonight's slide deck will be available at:
 - www.mass.gov/dcr/past-public-meetings
- If you have comments on this project:
 - *Submit online:* www.mass.gov/dcr/public-comment
 - *Deadline:* **Monday, December 13, 2021**

Please note: the contents of comments submitted to DCR, including your name, town and zip code, will be posted on DCR's website. Additional contact information provided, notably email address, will only be used for outreach on future updates to the subject project or property.

- If you wish to subscribe to a DCR general information or project-related listserv: contact DCR's Office of Community Relations via email at mass.parks@mass.gov

Thank You!



SULLIVAN PARK