

George C. Sullivan Park

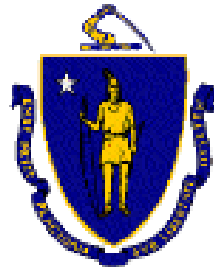
A Public Park Focused on our Community's Seniors



DCR Virtual Public Meeting

Wednesday, July 1, 2020

Design Presentation Prepared for Online Viewing



Commonwealth of Massachusetts

Governor

Charles D. Baker

Lieutenant Governor

Karyn E. Polito

Energy and Environmental Secretary

Kathleen Theoharides

Department of Conservation and Recreation Commissioner

Jim Montgomery



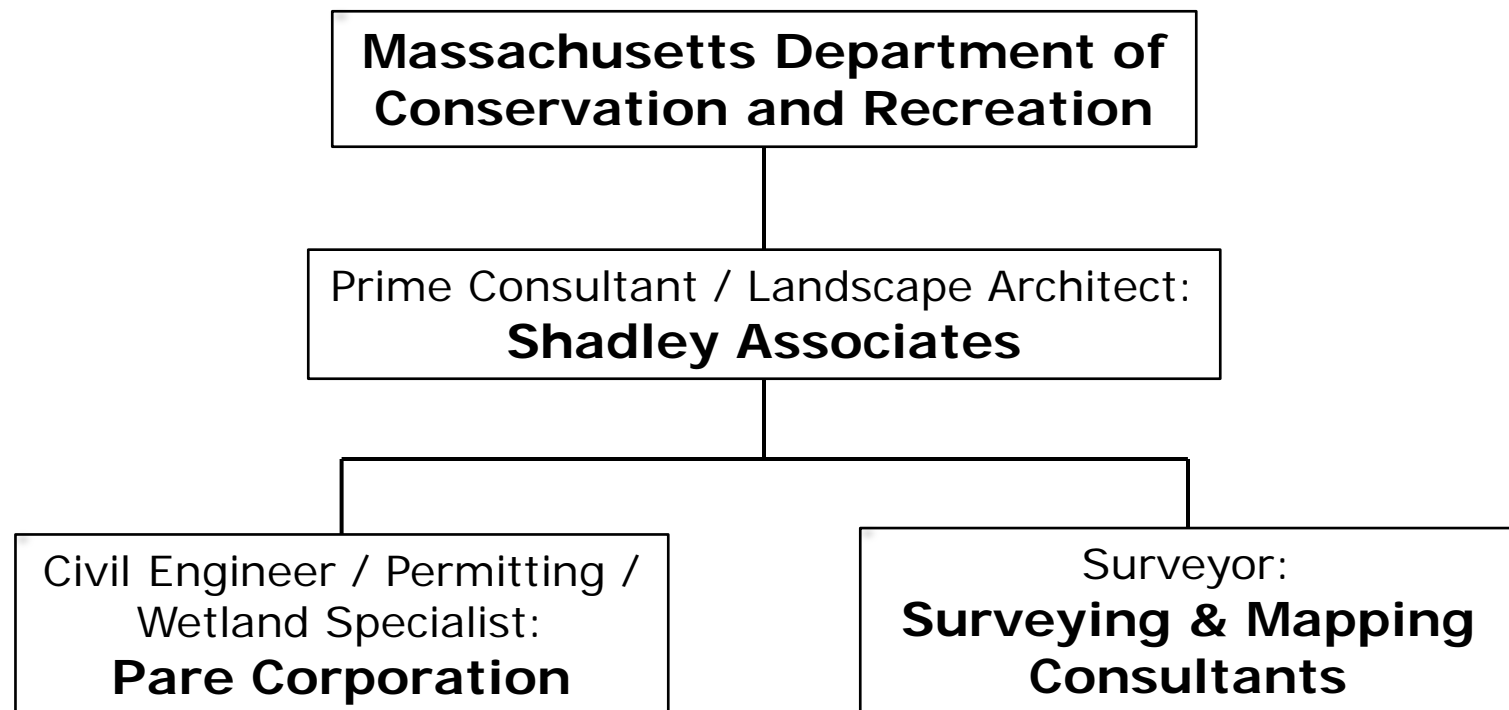
DCR Mission Statement

*To protect, promote, and enhance our
commonwealth of natural, cultural
and recreational resources
for the well-being of all.*

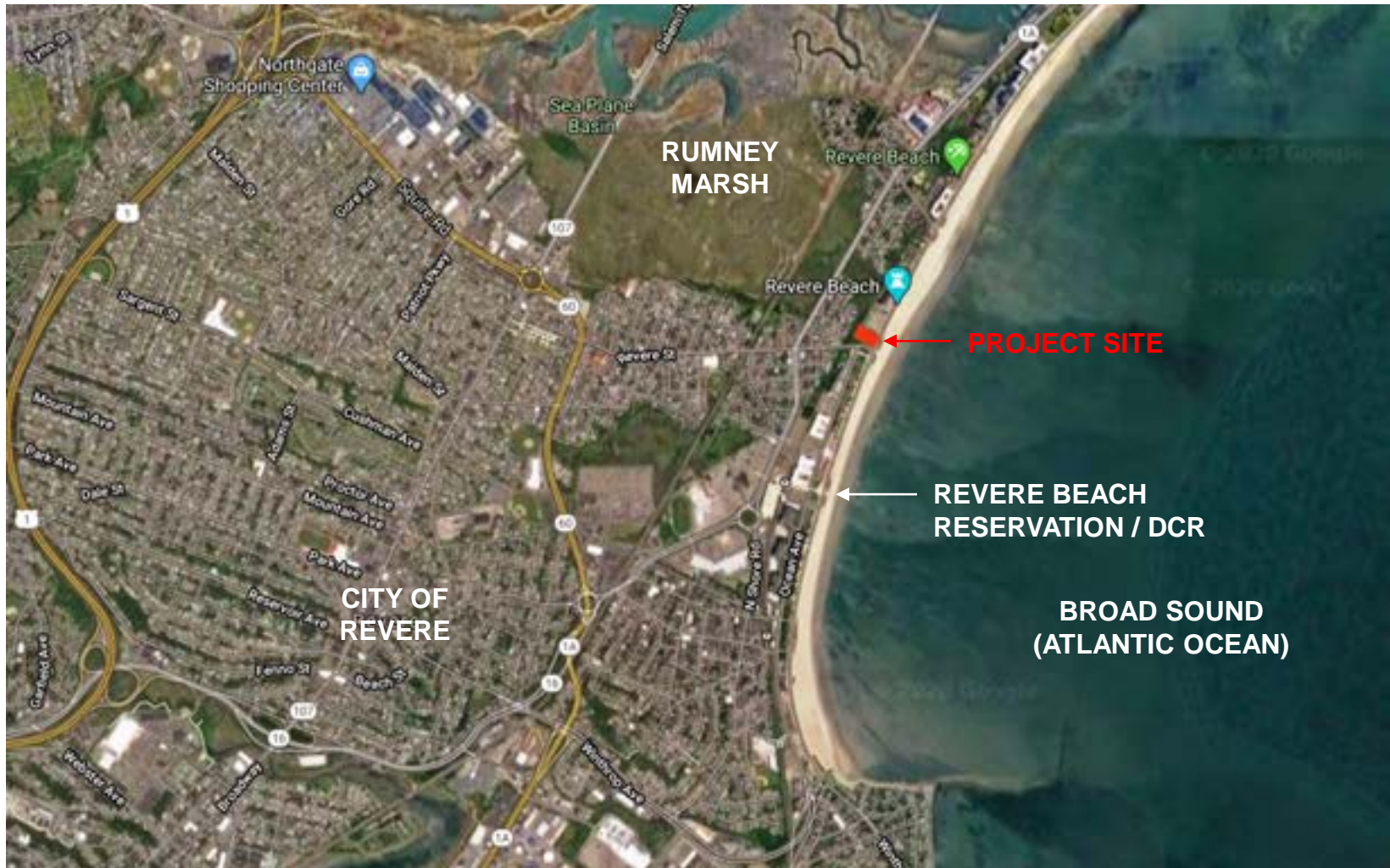
Purpose of Presentation

*To present two park concept alternatives
and solicit public comments for
improvements at
George C. Sullivan Park in Revere, MA.*

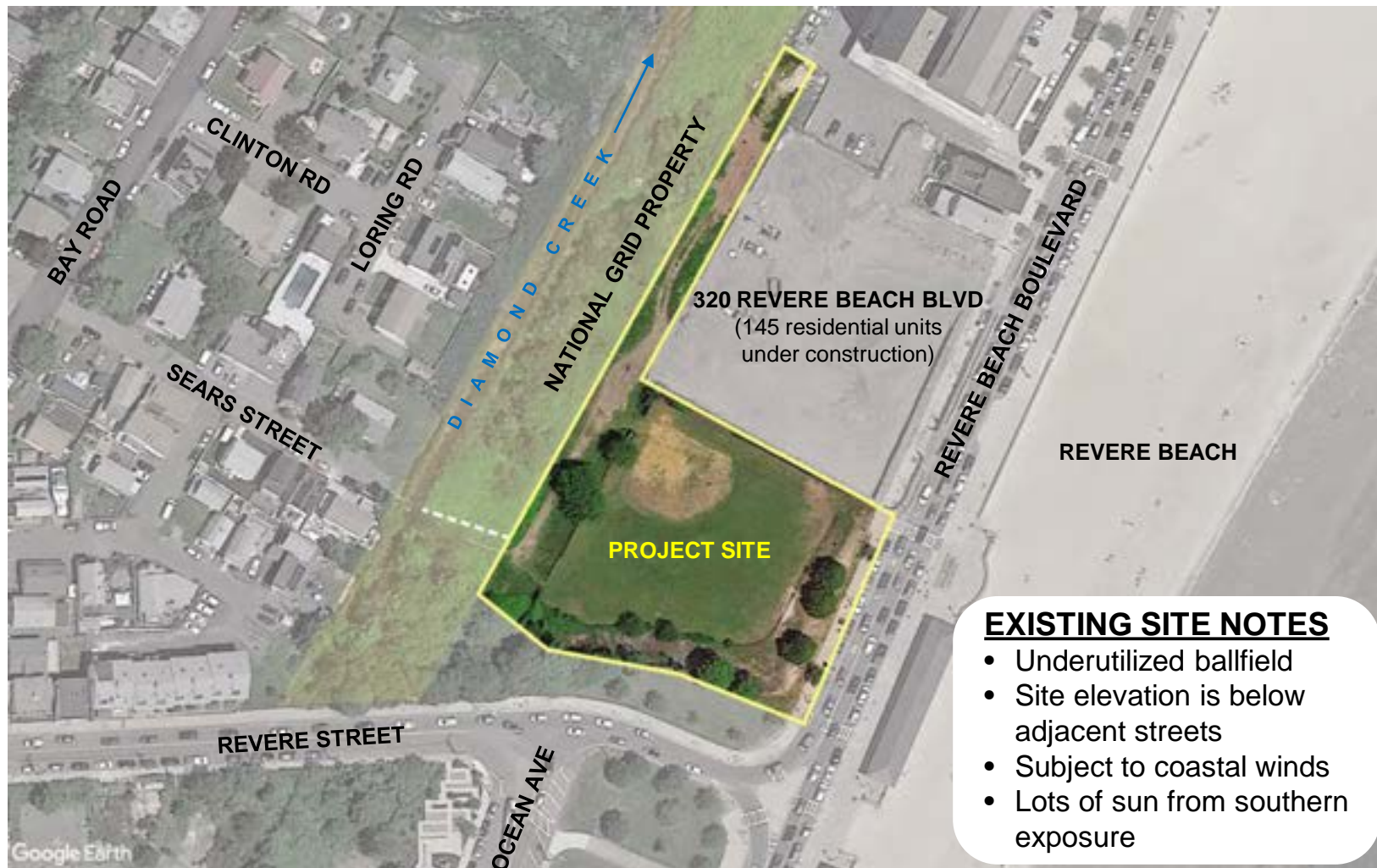
Project Team



Site Context



Project Site



Existing Conditions



Existing Conditions



Existing Conditions



Project Goals

- Create a “Community Park” especially focused on Senior Citizens
- Provide connections with public sidewalks and nearby neighborhoods
- Create a “universally accessible” park, compliant with the Americans with Disabilities Act (ADA)
- Provide a wide variety of activity choices
- Encourage physical exercise and movement
- Accommodate social interaction in a variety of spaces
- Re-introduce native vegetation for shade, habitat, and climate resiliency

Research

The design team researched the following questions to inform the park concept design alternatives:

- What are the typical characteristics of aging?
- How do we encourage seniors to use public open spaces?
- What are some design considerations associated with creating comfortable and enjoyable outdoor spaces for seniors?



Research

CHARACTERISTICS OF AGING

Normal changes and gradual impairment associated with the aging process

- **Cardiovascular System & Weight**
Reduced mobility
- **Bones, Muscles & Joints**
Higher injury risk
- **Memory and Cognitive Skills**
Reduced capacities; increased sensitivity to perception of safety
- **Eyes & Ears**
Reduced sensitivity
- **Skin**
Increased sensitivity to weather and objects
- **Digestive & Urinary Systems**

DESIGN GOALS

Encourage use of public open space by seniors

- **Encourage Physical Activity**
Multiple types and engagement levels for individuals and groups
- **Encourage Strength Building**
- **Encourage Social Interaction**
Small groups, large groups, programs, games
- **Create Comfortable Environments**
Maximize feeling of safety, visibility
Provide diverse seating
- **Provide Durable, Multi-Season Amenities**
- **Encourage Interaction with Nature**

DESIGN CONSIDERATIONS

General design considerations to ensure project design goals are achieved

- **Universally Accessible Walkways**
Spacious walkways for ample maneuvering
Connections with neighborhood
- **Safe Large & Small Activity Areas**
Clearly defined non-slip surfaces with noticeable material changes
High levels of visibility
- **Multiple Accessible Seating Options**
Different configurations for options
Large & small group seating areas
- **Buffering & Screening**
Planting to buffer undesirable sights & sounds
Create internal sensory interest
- **Shade & Protection from the Elements**
Shade trees & covered structure(s)
- **Restrooms & drinking water facilities**

Research

PROGRAM ELEMENTS: PASSIVE

Program recommendations to provide passive recreation that meet the needs of an aging population

- **Accessible Walkways, Trails, Loop Walks**
 - ADA / MAAB compliance
 - Handrails and guardrails for elevation changes
 - Discourage bicycles
- **Multi-Purpose Open Spaces**
 - Ability to provide varying experiences
 - Classes, entertainment or small groups
 - Paved and unpaved
 - Scales to discourage active team sports
- **Seating** (*high capacity, multiple options*)
 - Provide diverse resting areas & gathering spaces
 - Provide armrests and seatbacks; tables for activities
- **Sculpture / Public Art**
 - Landmark or point of conversation
- **Planting**
 - Engagement with nature & wildlife in a controlled space
 - Promote sensory plants (sight, sound, touch, smell)
 - Protection from weather and buffer

PROGRAM ELEMENTS: ACTIVE

More structured recreational activities that provide opportunities for physical activity and social interaction to an aging population

- **Table Games** (*pairs or groups*)
 - Chess, Checkers, Backgammon
 - Card Games, Puzzles
- **Active Games** (*pairs or groups*)
 - Bocce
 - Shuffleboard
 - Cornhole
 - Horseshoe Pits
 - Table Tennis
 - Putting Greens
 - Pickleball
- **Exercise Facilities** (*individual or groups*)
 - Fitness equipment
 - Exercise group space (yoga, meditation)
 - Physical Therapy
- **Gardening** (*individual or groups*)
 - Raised beds for vegetable, fruit & herb gardening
(*requires potable water source*)

Design

- Research informed the design work
- Two Concept Design Alternatives
 - Intentionally different to gain public feedback
 - Different layout of walkways
 - Alternative arrangement of activities / spaces
 - Different activities or different scale of each activity
- Which of the following designs do you like?
- Which elements of each design do you like?



Concept 1

- Large plaza at street level with trees, tables, and benches with views into the park below
- Water feature at plaza
- Bocce court terrace with seating
- Open middle lawn for flexible activities
- Shade shelter for seating or activities
- Small fitness area
- Accessible loop walks
- Possible connection to City bridge at Sears St.
- Possible path connection to the north



GEORGE C. SULLIVAN PARK

Concept 1: Main Park Area



GEORGE C. SULLIVAN PARK

Concept 1: Enlargement of Plaza & Bocce Terrace



Shaded plaza for activities



Bocce courts with seating & accessible pavement



Concept 1: Great Lawn & Shade Shelter Plaza



Shade shelter with small concrete plaza for flexible use



Concept 1 – Material Images



Entry granite walls to match Reservation (Doris Park)



Drinking fountain



Example of sculptural water feature



Railing and seating to match Reservation



Alternative benches with seat extensions and interim armrests



Example of sculptural water feature

Concept 1 – Material Images



Public art for interest and wayfinding



Individual fitness equipment



Group fitness equipment



Public art



*Sloped accessible walkway with
planting & seating*

Concept 2

- Long central lawn for flexible activities
- Wide loop walkway with smaller secondary paths
- Large fitness area
- Bocce courts along main walkway
- Small shade shelters with seating along walk
- Overlook terrace near Revere Street with views into the park
- Accessible path from Overlook into park
- Possible connection to City bridge at Sears St.
- Possible path connection to the north



GEORGE C. SULLIVAN PARK

Concept 2: Main Park Area



GEORGE C. SULLIVAN PARK

Concept 2: Enlargement of Entries & Fitness Area



Large fitness area with different activities



Accessible fitness equipment



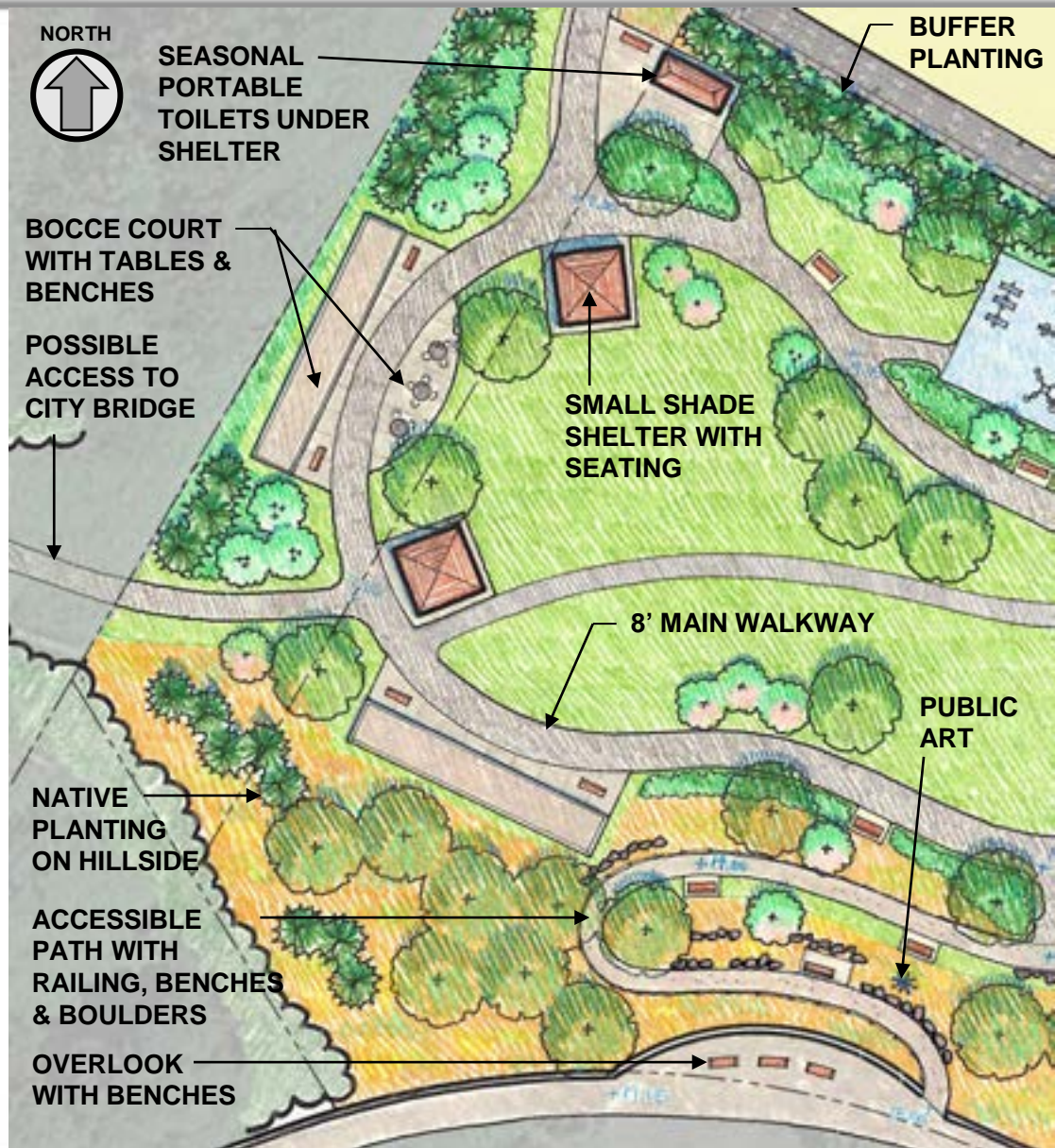
Concept 2: Great Lawn & Bocce Courts



Bocce courts (accessible)



Small shade shelters with seating



Concept 2 – Material Images



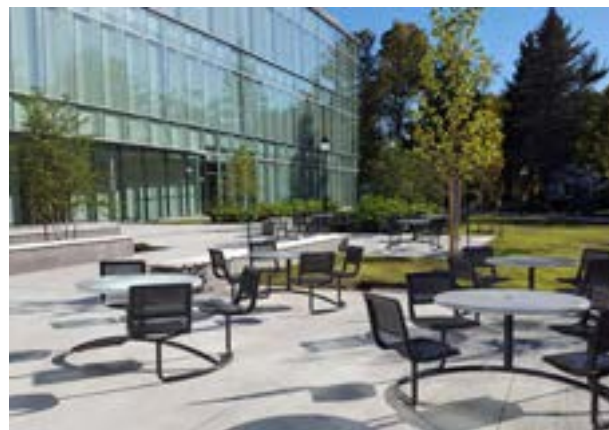
Revere Street Overlook wall to match Reservation



Drinking fountain



Stormwater management area with planting



Tables for group seating



Bench with walker or wheelchair space



Public Art

Next Steps

- We need your comments!
 - Which Concept Option do you prefer?
 - What activities / elements do you like?
 - Are there other activities / elements you would like that aren't shown in the concepts?
 - What do you prefer for benches, tables & covered seating?
 - Are you interested in a connection to the City's bridge at Diamond Creek?
- We will create a Preferred Site Plan based on your comments.
- The DCR will hold a public presentation.

Comments and Feedback

Concept 1



Concept 2



Preliminary Schedule

Public Comment Period:	July 1 – July 15, 2020
Preferred Site Plan:	August 2020
Public Meeting:	September 2020
Permitting:	September 2020
Final Bid Documents:	November 2020
Construction:	<i>When funding becomes available</i>

Additional Information

For more information:

<http://www.mass.gov/eea/agencies/dcr/public-outreach/public-meetings/>

If you have comments or suggestions on this project:

Submit online:

<http://www.mass.gov/dcr/public-comment>

Or email:

jennifer.norwood@mass.gov with Subject: Sullivan Park Improvements

Deadline: Wednesday, July 15, 2020

Note: Public comments submitted to DCR may be posted on the DCR website in their entirety, and no information, including contact information, will be redacted.

If you have questions or concerns or wish to subscribe to a DCR general information or project-related listserv:

contact DCR's Office of Community Relations at 617-626-4973 or

Mass.Parks@state.ma.us.