

# SUMMARY OF THE 2024 MASSACHUSETTS PIPING PLOVER CENSUS

---



Bill Byrne, MassWildlife

Prepared by: Natural Heritage & Endangered Species Program  
Massachusetts Division of Fisheries & Wildlife  
*March 2025*

## ABSTRACT

This report summarizes data on abundance, distribution, and reproductive success of Piping Plovers (*Charadrius melodus*) in Massachusetts during the 2024 breeding season. Observers reported breeding pairs of Piping Plovers at 220 sites; 157 additional sites were surveyed at least once, but no breeding pairs were detected at them. The population increased 1.3% relative to 2023. The ***Index Count*** (statewide census conducted 1-9 June) was **1,179 pairs**, and the ***Adjusted Total Count*** (estimated total number of breeding pairs statewide for the entire 2024 breeding season) was **1,193 pairs**. A total of 1,437 chicks was reported fledged in 2024, for an overall productivity of **1.22 fledglings per pair**, based on data from 98.6% of pairs.

## SUPPORT ENDANGERED SPECIES CONSERVATION

Contribute on your state income tax form or send a check  
made payable to Commonwealth of MA: NHESP to  
1 Rabbit Hill Road, Westborough, MA 01581.



For more information, please call  
(508) 389-6360 or visit [mass.gov/nhesp](https://mass.gov/nhesp)

THANK YOU FOR YOUR SUPPORT!

## INTRODUCTION

Piping Plovers are small, sand-colored shorebirds that nest on sandy beaches and dunes along the Atlantic Coast from North Carolina to Newfoundland. The U.S. Atlantic Coast population of Piping Plovers has been federally listed as *Threatened*, pursuant to the U.S. Endangered Species Act, since 1986. The species is also listed as *Threatened* by the Massachusetts Division of Fisheries and Wildlife pursuant to the Massachusetts' Endangered Species Act.

Population monitoring is an integral part of recovery efforts for this population (U.S. Fish and Wildlife Service 1996, Hecht and Melvin 2009a, b). It allows wildlife managers to identify limiting factors, assess effects of management actions and regulatory protection, and track progress toward recovery. In this report, we summarize data on abundance, distribution, and reproductive success of Piping Plovers breeding in Massachusetts in 2024, as observed and reported by a coast-wide network of cooperators.

## METHODS

Monitoring and management of Piping Plovers and other coastal waterbirds in Massachusetts is carried out by wildlife biologists, seasonal shorebird monitors, beach managers, researchers, and volunteers affiliated with over 20 federal and state agencies, local municipalities, local and regional land trusts, private conservation organizations, and universities. Cooperators monitored 377 sites in Massachusetts in 2024 for the presence of breeding Piping Plovers.

### Abundance

We measure abundance of Piping Plovers in terms of breeding pairs, defined as pairs observed with either a nest or unfledged chicks or that exhibited site tenacity and evidence of pair bonding and territoriality. We report three different measures of abundance: the *Index Count*, *Unadjusted Total Count*, and *Adjusted Total Count*. The *Index Count*, as reported since 1990, is the total number of pairs tallied statewide each year during a 9-day count period in late May and early June, standardized each year for the entire Atlantic Coast. In 2024, the *Index Count* period was 1-9 June. The objective of the *Index Count* is to estimate population size with minimal double-counting of pairs that may move between or within sites, thereby providing an index to population trends that is likely to be more precise than counts based on observations made over the entire breeding season. The *Index Count* likely minimizes double-counting because it occurs over such a short period of time. However, it probably underestimates the actual number of breeding pairs because it does not include pairs that leave the state before, arrive after, or are present but simply go undetected during the 9-day *Index Count* period.

For sites for which "0" is reported for the *Index Count* but "ND" is reported for the *Total Count*, this indicates that the site was surveyed during the *Index Count* period (1-9 June) and no breeding pairs were detected, but during the rest of the breeding season, it was either not surveyed or was surveyed too infrequently (e.g., surveyed < 2 times after Index Count) to confidently conclude that no pairs were present for at least 2 weeks. To be included in the *Total Count*, a pair must have exhibited territoriality and pair bonding for a minimum of two weeks.

Since 2000, we have reported two different "Total Counts." The *Unadjusted Total Count* is simply a tally of the total number of pairs reported for all sites over the course of the entire nesting season, with limited effort made to adjust for any pairs that may have been double-counted if they nested unsuccessfully at one location and then re-nested at another. We then derive an *Adjusted Total Count* by

calculating the average of the *Index Count* and the *Unadjusted Total Count*, rounded to the nearest whole number of pairs.

The *Unadjusted Total Count* likely overestimates the actual population by double-counting pairs that establish nesting territories at more than one location in a given year. Without banded birds, however, it is impossible to accurately determine whether late-nesting pairs may have nested earlier at a different site or whether they simply did not arrive or begin breeding activities until June. It is too subjective, and likely inaccurate, to try to adjust the *Total Count* of pairs each year by not tallying late nesting pairs (*i.e.*, pairs reported as “new” pairs that nested after the first week in June) based on the assumption that these birds were probably already counted earlier in the season. We believe that the *Adjusted Total Count* is the most accurate estimate of the actual number of breeding pairs in Massachusetts because it falls midway between the *Index Count* and *Unadjusted Total Count*, which we suspect slightly underestimate and overestimate, respectively, the actual breeding population.

### **Reproductive Success**

The primary measure of reproductive success that we report is *Productivity*, the number of chicks fledged per pair. The denominator of this ratio is the number of breeding pairs for which fledging data were reported; this includes not only pairs that successfully fledged chicks but also pairs that cooperators believed did not nest, pairs that nested unsuccessfully (eggs did not survive to hatch), and pairs whose chicks failed to fledge. Since 2000, we have reported two different estimates of *Number of pairs with fledge data*. As with counts of breeding pairs, estimates of the number of pairs for which fledging data are reported will be biased if double-counting of pairs occurs. Double-counting will overestimate the number of pairs in the denominator of the productivity ratio and thereby will underestimate actual productivity. To reduce the potential bias associated with double-counting, we multiply the *Unadjusted number of pairs with fledge data* (a tally of the total number of pairs with fledge data reported for all sites, with limited effort made to adjust for pairs that may have been double counted) by the ratio of the *Adjusted Total Count* to the *Unadjusted Total Count* to arrive at the *Adjusted number of pairs with fledge data*.

### **Median Lay and Hatch Dates**

The median estimated date of first egg laid was calculated by using known and estimated dates of first egg laid. Two days were subtracted from Date Clutch Found when the nest was found at two eggs and four days were subtracted from Date Clutch Found when the nest was found at three eggs. For nests that were found at four eggs, only nests that successfully hatched were used in calculations, and 33 days were subtracted from the hatch date to estimate dates of first egg laid to account for the egg-laying period (6 days) plus the mean incubation period (27 days). The median estimated hatch date was calculated using the known hatch date. For hatch dates that consisted of date ranges, the median date was used as the estimated hatch date. All nests with the aforementioned data were used to calculate both the median estimated date for the first egg laid and hatch date.

### **Data reporting and quality control**

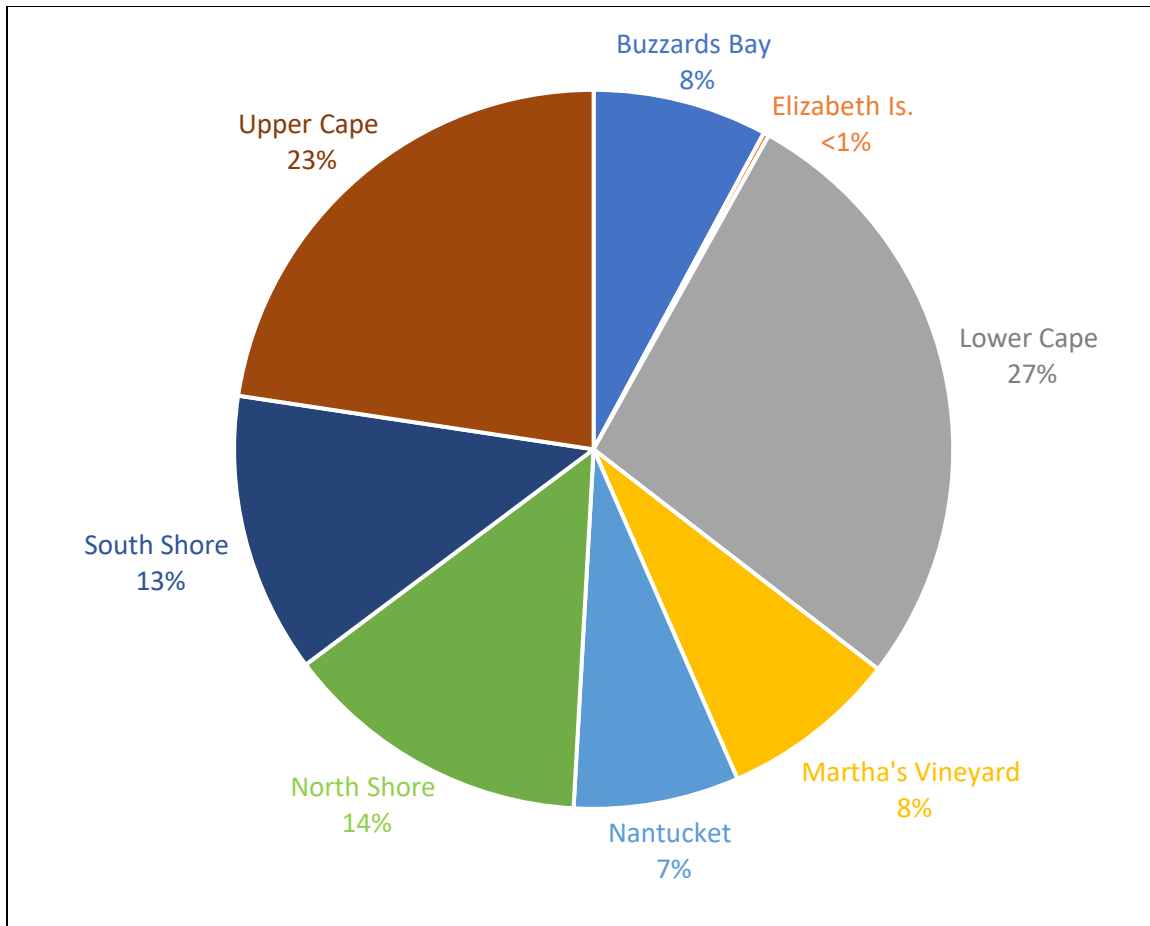
All data were reported by cooperators who filled out a standard Massachusetts Piping Plover Census Form for each site monitored, in most cases using the Piping Plover Online Data Entry System ([PIPLODES](#)). These forms are used to report data on number of breeding pairs (*Index Count* and *Total Count*); frequency of site visits; design(s) and installation dates of predator exclosures; dates of nest discovery, completion, and hatching or failure; number of eggs on the date the nest was discovered; total numbers of eggs laid, eggs hatched, and chicks fledged; reasons for egg and chick loss, if determined; and comments regarding census results, limiting factors, and management needs. Maps of sites showing the

locations of all nests were submitted with census forms. After reviewing census forms, if necessary, we contacted cooperators to obtain missing or incomplete data, resolve inconsistencies, and clarify ambiguities. When we could not obtain the needed information, we used best professional judgment to assign final values or noted data as preliminary; any such instances are noted in Appendix 1.

## RESULTS

Observers reported breeding Piping Plovers at 220 sites in Massachusetts in 2024 (**Appendix 1**). An additional 157 sites were surveyed one or more times during May and June, but no breeding pairs were detected at them. The *Unadjusted Total Count* of the number of breeding pairs of Piping Plover was 1,210 pairs (vs. 1,193 in 2023). The **Adjusted Total Count** was **1,193 pairs**, a 1.3% increase over 2023 (1,178 pairs). The **Index Count** was **1,177 pairs** (vs. 1,164 pairs in 2023) or 98.6% of the *Adjusted Total Count*.

Distribution of breeding pairs by region (**Figure 1**) was similar to 2023, with slight decreases on the Lower Cape (27%; vs. 29% in 2023) and Nantucket (7%; vs. 8% in 2023), and slight increases on the Upper Cape (23%; vs. 21% in 2023) and Buzzards Bay (8%; vs. 7% in 2023). Twenty-eight sites with ten or more breeding pairs accounted for 52.5% of the Massachusetts breeding population, while 121 sites with three or fewer pairs accounted for 17.7% of the population.



**Figure 1.** Distribution of Piping Plover breeding pairs by Massachusetts region in 2024, based on *Adjusted Total Counts* for each region.

In total, 1,437 chicks were reported fledged, resulting in overall productivity of **1.22 fledglings/pair**, based on data from 1,193 of 1,210 pairs (98.6%; the *adjusted number of pairs with fledge data* divided by the *unadjusted total count*).<sup>1</sup> This represents a 9.9% increase in breeding productivity relative to 2023 (1.11 fledglings/pair). Productivity varied by region, ranging from 1.48 on the Upper Cape down to 0.59 fledglings/pair on Nantucket (**Table 1**). Productivity data were not available for the Elizabeth Islands due to limited survey effort.

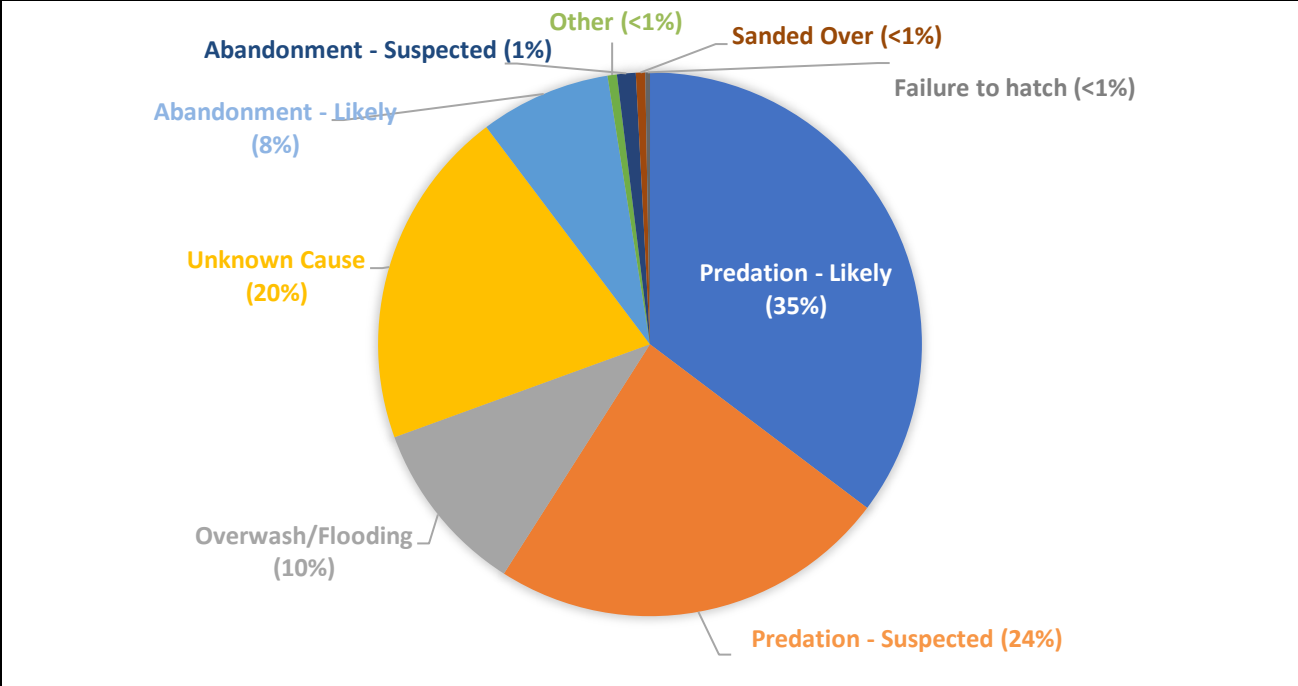
**Table 1.** Breeding productivity (fledglings/pair) of Piping Plovers in Massachusetts by region in 2023-2024.

<b>Region</b>	<b>2024</b>	<b>2023</b>
Buzzards Bay	0.95	0.95
Elizabeth Islands	ND	ND
Lower Cape	1.15	0.96
Martha's Vineyard	1.07	0.81
Nantucket	0.59	1.01
North Shore	1.27	1.01
South Shore	1.26	1.21
Upper Cape	1.48	1.43

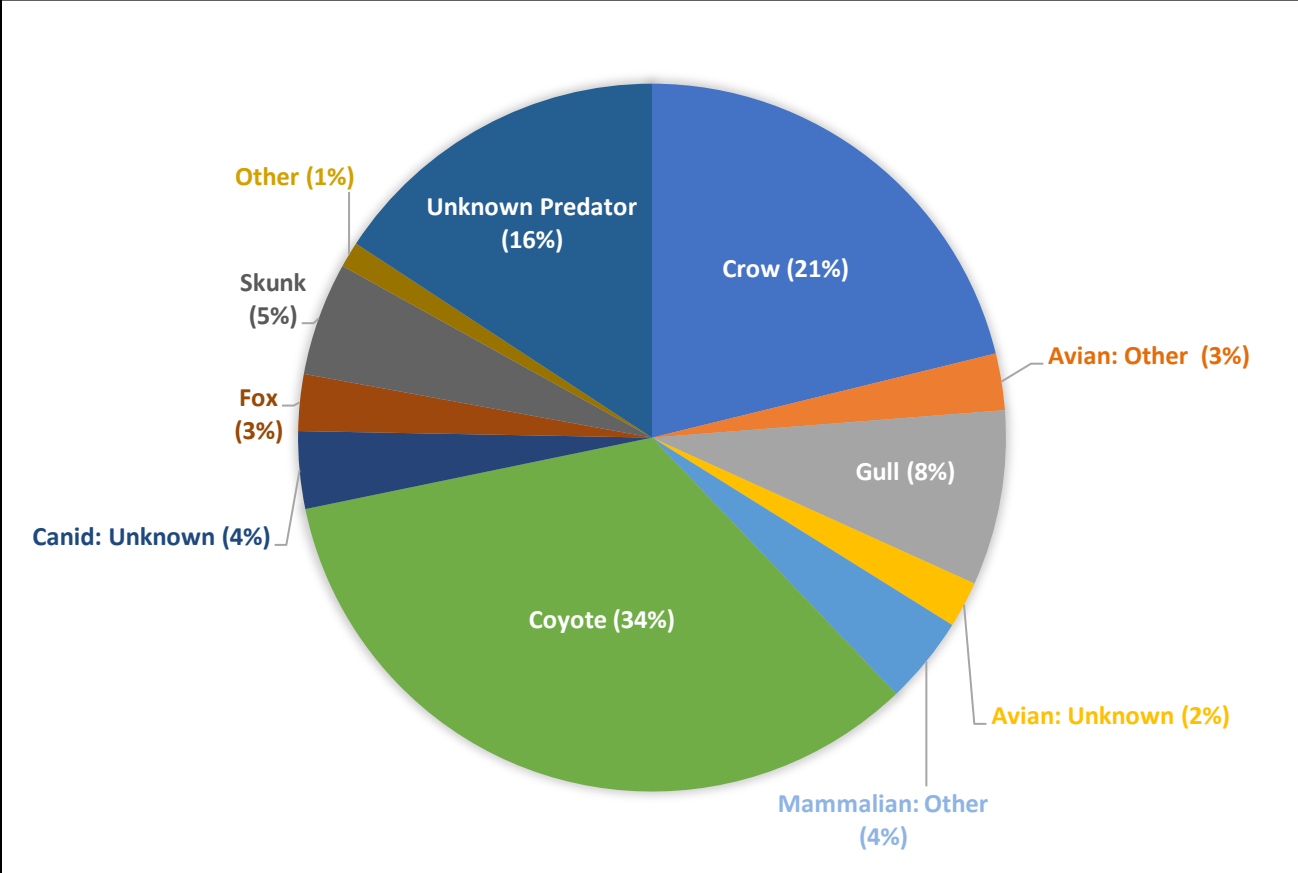
Nest failure rates were lower in 2024 (45.9%) than in 2023 (51.7%). Causes of nest loss are shown in **Figure 2**. The most common known causes of nest loss were predation (likely and suspected) and overwash/flooding. Overwash/flooding accounted for a lower proportion of nest loss in 2024 (10%) than in 2023 (25%), while predation (59%) was higher compared to 2023 (52%). **Figure 3** shows presumed predators of nests likely and suspected to have been depredated.

---

<sup>1</sup> The *unadjusted number of pairs with fledge data* was 1,193 (out of 1,210 unadjusted total pairs). The *adjusted number of pairs with fledge data* was 1,176.



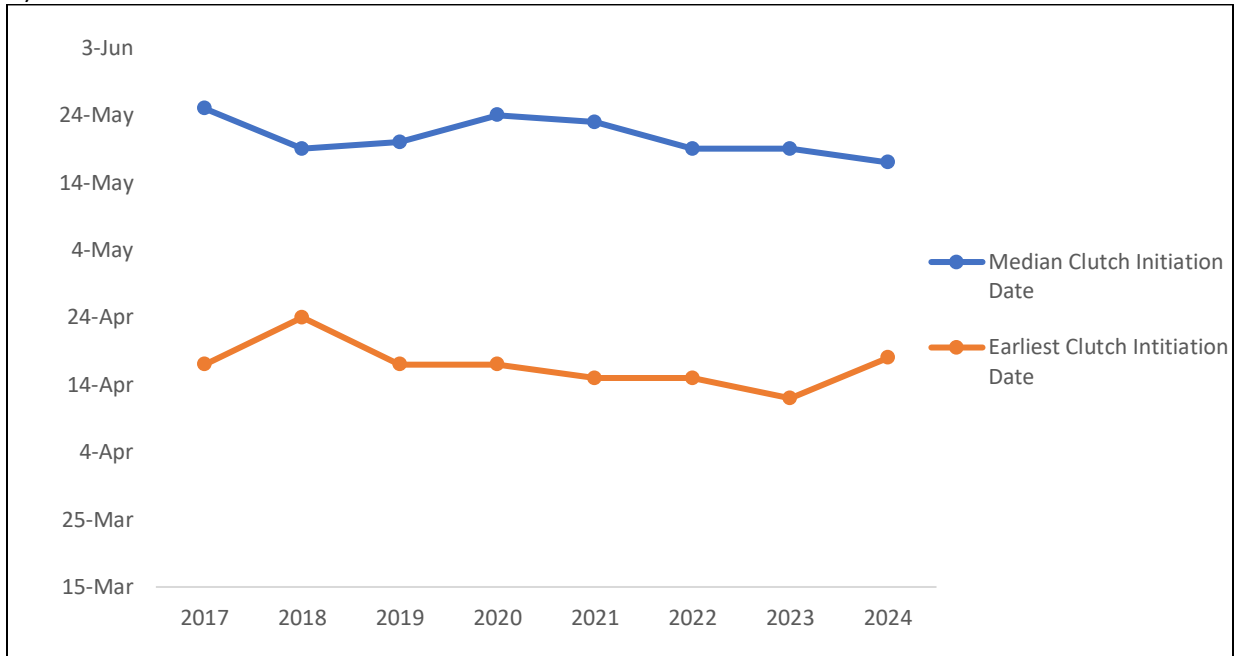
**Figure 2.** Causes of Piping Plover nest loss in Massachusetts, 2024 (n = 720 nest failures).



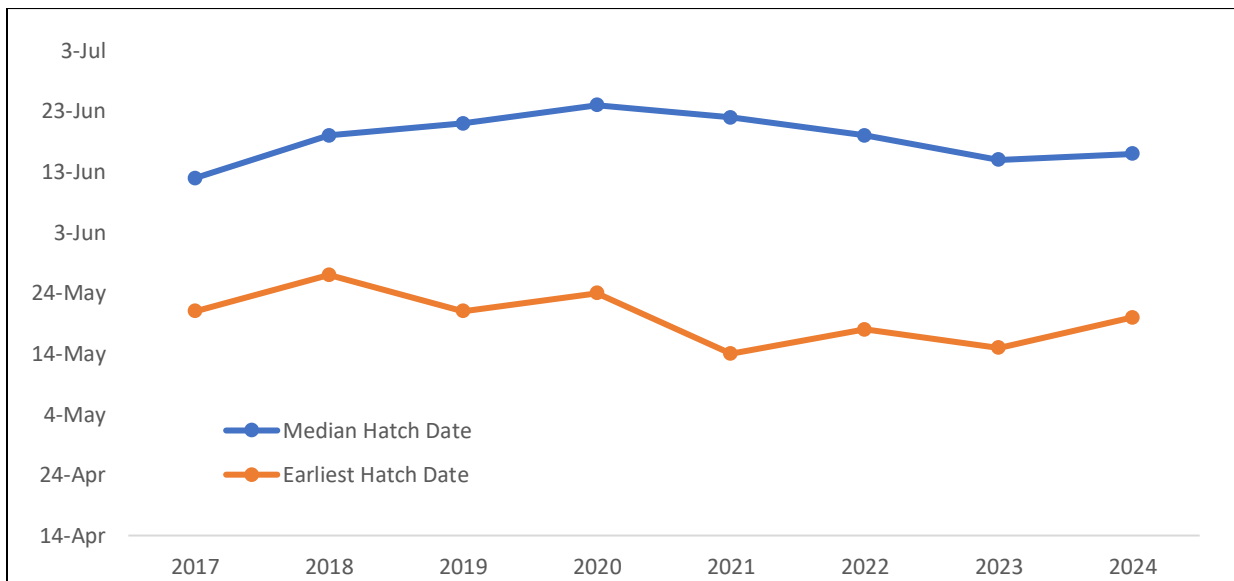
**Figure 3.** Presumed predators of Piping Plover nests likely and suspected to have been depredated in Massachusetts, 2024 (n = 425 presumed depredated nests).

In 2024, the earliest clutch initiation date was estimated to be 18 April at both Seagull Beach (Yarmouth) and Wollaston Beach (Quincy). Statewide, the median clutch initiation date was 17 May (19 May in 2023). The earliest approximate hatch date was 20 May, at Wollaston Beach (Quincy). The median hatch date statewide was 16 June (15 June in 2023). Trends over time in earliest and median clutch initiation date and earliest and median hatch date are shown in **Figures 4A and 4B**.

A)



B)

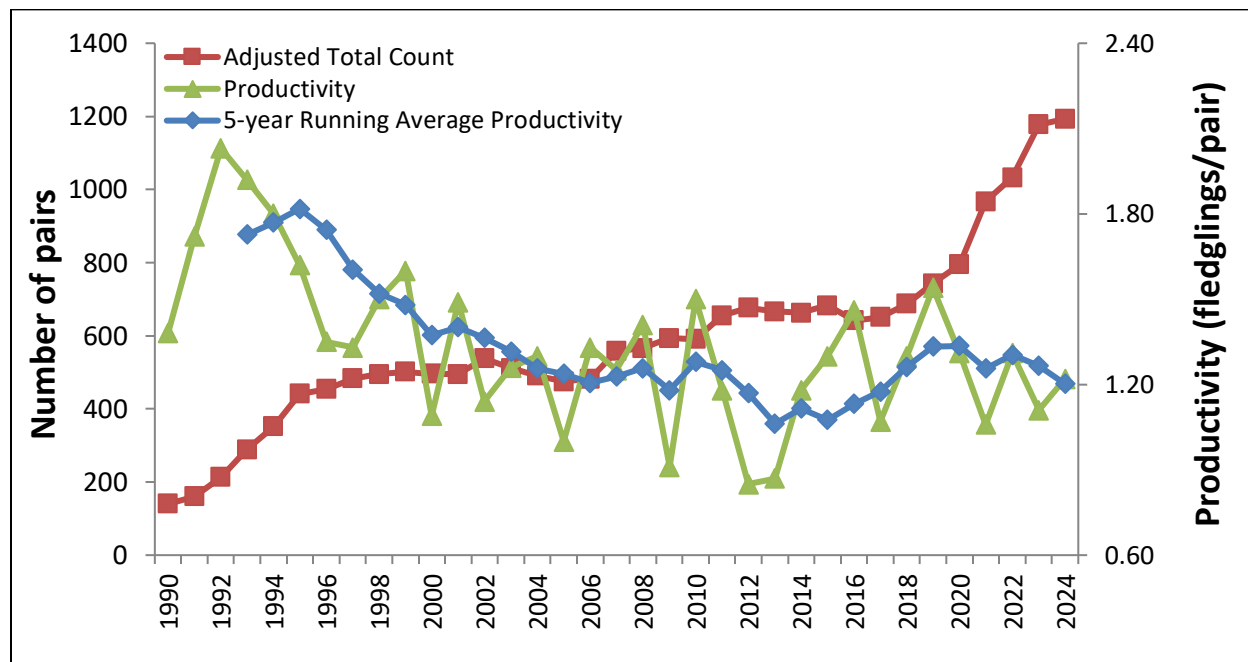


**Figure 4.** Piping Plover earliest and median clutch initiation date (A) and earliest and median hatch date (B) between 2017-2024 in Massachusetts.



Hatch rates increased (54.1%; n=1,516 nests with known fates) relative to 2023 (48.3%; n=1,639) and nesting attempts per pair decreased to 1.31 vs. 1.43 in 2023 (based on *adjusted total counts*). Hatch rates for exclosed (9.9% of total known-fate nests) and unexclosed (90.1% of total known-fate nests) nests were 80.7% (n=150) and 51.2% (n=1,366), respectively, as compared to 65.4% (n=211) and 45.7% (n=1,428) in 2023. The nest abandonment rate for exclosed nests (11.3%; 17 of 150 nests) was substantially higher than for unexclosed nests (3.0%; 41 of 1,366 nests with known fates) and higher compared to the 10.4% abandonment rate for exclosed nests (22 of 211 nests) and 2.5% abandonment rate for unexclosed nests (36 of 1,428 nests) in 2023.

Long term trends in breeding Piping Plover population size and breeding productivity are shown in **Figure 5**. Although the five-year running average of breeding productivity steadily declined from the mid-1990s to 2015, it then began to increase before somewhat stabilizing in recent years. Since 2018, the five-year average of productivity has been at or above the estimated 1.2 fledglings per pair thought to be necessary to maintain a stable population (Melvin & Gibbs 1996)<sup>2</sup>, and the breeding population has increased dramatically over that period. In fact, since state-wide monitoring began, the last seven years have all represented record highs for the number of territorial pairs of Piping Plover in Massachusetts. The current state population far exceeds the goal of 625 pairs throughout New England identified in the Piping Plover Atlantic Coast Population Recovery Plan. Although the New England Piping Plover population has surpassed its population recovery goal, that is not the case for other regions along the Atlantic Coast.



**Figure 5.** Piping Plover abundance (adjusted total count) and productivity (fledglings/pair) in Massachusetts, 1990-2024.

<sup>2</sup> Melvin and Gibbs (1996) suggest that the actual fecundity needed to maintain a stable population may be slightly lower than the estimate derived from their model. Other researchers have also suggested that early estimates of fecundity needed for a stable population may have been high (e.g., Catlin et al. 2015).

## ACKNOWLEDGEMENTS

This report was prepared by Andrew Vitz with assistance from Marcela Liljeström, Sarah Guitart, Amanda Veinotte, and Carolyn Mostello. We extend our sincere thanks to the many biologists, seasonal shorebird monitors, beach managers, landowners, and volunteers who participated in conservation efforts on behalf of Piping Plovers and other coastal waterbirds in Massachusetts in 2024. We also thank the more than 20 state and federal agencies, local municipalities and county government, local and regional land trusts, private conservation organizations, volunteers, and universities that supported their efforts. We especially thank all the individuals who participated in population monitoring and submitted the data that are summarized in this report.

## LITERATURE CITED

- Catlin, D.H., J.D. Fraser, and J.H. Felio. 2015. Demographic responses of piping plovers to habitat creation on the Missouri River. *Wildlife Monographs* 192:1-42.
- Hecht, A. and S. M. Melvin. 2009a. Population trends of Atlantic Coast Piping Plovers, 1986-2006. *Waterbirds* 32:64-72.
- Hecht, A. and S. M. Melvin. 2009b. Expenditures and effort associated with recovery of breeding Atlantic Coast Piping Plovers. *J. Wildlife Management* 73:1099-1107.
- Walker, K. 2019. *Summary of the 2018 Massachusetts Piping Plover Census*. Massachusetts Division of Fisheries and Wildlife. 25 pp.
- Melvin, S.M. and J.P. Gibbs. 1996. Viability analysis for the Atlantic coast population of piping plovers. Pp. 175-186 in *Piping Plover (Charadrius melodus) Atlantic Coast population revised recovery plan*. U.S. Fish and Wildlife Service, Hadley, MA. 245 pp.
- U.S. Fish and Wildlife Service. 1996. *Piping Plover (Charadrius melodus) Atlantic Coast population revised recovery plan*. U.S. Fish and Wildlife Service, Hadley, MA. 245 pp.

Site	Index Count <sup>a</sup> (no. pairs)	Total Count <sup>b</sup> (no. pairs)	No. chicks fledged <sup>c</sup>	No. pairs with fledged data <sup>c</sup>	No. unpaired adults <sup>d</sup>	Source <sup>e</sup>	Notes <sup>f</sup>
<b>NORTH SHORE</b>							
Brace Cove, Gloucester	0	ND	ND	0	ND	MAS	
Carson Beach, Boston	1	1	3	1	0	DCR	
Coffins Beach Gloucester	4	4	6	4	0	MAS	
Constitution Beach, East Boston	0	ND	ND	0	ND	MAS	
Crane Beach, Ipswich	45	45	54	45	0	TTOR	
Good Harbor Beach, Gloucester	3	3	2	3	0	MAS	1 non-nesting pair
L Street Bathhouse, Dorchester	4	5	8	5	0	MAS	1 non-nesting pair later nested at Pleasure Bay
Lovell's Beach, Boston	0	0	0	0	0	MAS	
Lovell's Island, Boston	0	0	0	0	0	MAS	
Nahant State Beach, Nahant	5	5	3	5	0	DCR	1 non-nesting pair
Newbury Town Beach, Newbury	10	10	15	10	0	MAS	
Newburyport Beach, Newburyport	3	3	4	3	0	MAS	
Parker River NWR, Newbury/Rowley	45	50	43	50	0	USFWS	
Rainsford Island, Boston	0	0	0	0	0	MAS	
Pleasure Bay, Boston	1	1	4	1	0	DCR	1 pair was first a non-nesting pair at L Street Bathhouse. New PIPL site
Revere Beach-North, Revere	5	5.5	13	5.5	1	DCR	
Revere Beach-South, Revere	4	4	11	4	0	DCR	
Salisbury Beach, Salisbury	4	5	3	5	0	DCR	1 non-nesting pair
Sandy Point, Ipswich	15.5	16	12	16	1	DCR	1 non-nesting pair, male remained as unpaired. One pair incubated a LETE egg that hatched
Snake Island, Winthrop	0	0	0	0	0	MAS	
Two Penny Loaf, Gloucester	0	0	0	0	0	MAS	

Site	Index Count <sup>a</sup> (no. pairs)	Total Count <sup>b</sup> (no. pairs)	No. chicks fledged <sup>c</sup>	No. pairs with fledged data <sup>c</sup>	No. unpaired adults <sup>d</sup>	Source <sup>e</sup>	Notes <sup>f</sup>
West Beach, Beverly	1	1	4	1	0	ECGA	
Winthrop Beach, Winthrop	7	7	18	7	0	DCR	1 non-nesting pair
Yirrell Beach, Winthrop	3.5	3.5	11	3.5	1	Winthrop	
<b>SOUTH SHORE</b>							
Boathole, Plymouth	2	2	7	2	0	DBR	
Bumpkin Island, Hull	0	0	0	0	0	MAS	
Duxbury Beach, Duxbury	50.5	50.5	43	50.5	1	DBR	
East Beach, New Bedford	1	1	2	1	0	MAS	
Ellisville Harbor State Park, Plymouth	0	0	0	0	0	MAS	
Ellisville Shifting Lots Preserve, Plymouth	5	5	7	3	0	MAS	
Fourth Cliff, Scituate	4	4	4	3	0	MAS	
Grape Island, Weymouth	0	0	0	0	0	MAS	
Green Harbor, Marshfield	1	1	4	1	0	MAS	
Green Harbor (private), Marshfield	0	0	0	0	0	MAS	
Humarock, Scituate	1	1	0	1	0	MAS	
Nantasket Beach, Hull	5	7	3	7	0	MAS	1 non-nesting pair
Nantasket DCR, Hull	0	0	0	0	0	MAS	
Peddock's Island, Hull	0	ND	0	0	ND	MAS	
Pleasant Beach, Cohasset	0	1	0	1	0	MAS	1 pair thought to have 1 <sup>st</sup> nest at Sandy Beach
Plymouth Long Beach, Plymouth	47.5	47.5	76	47.5	1	Plymouth	6 non-nesting pairs
Rexhame Beach, Marshfield	1	1	3	1	0	MAS	
Sagamore Beach, Bourne	0	0	0	5	0	MAS	
Sagamore Beach, Plymouth	0	ND	ND	0	ND	MAS	
Sandy Beach, Cohasset	0	1	0	1	0	MAS	1 pair thought to have renested at Pleasant Beach
Saquish, Plymouth	7	7	18	7	0	GSC	1 pair could be a renest but considered as two separate pairs given limited surveys
Saquish, Plymouth	0	0	0	0	0	DBR	

Site	Index Count <sup>a</sup> (no. pairs)	Total Count <sup>b</sup> (no. pairs)	No. chicks fledged <sup>c</sup>	No. pairs with fledged data <sup>c</sup>	No. unpaired adults <sup>d</sup>	Source <sup>e</sup>	Notes <sup>f</sup>
The Glades, Scituate	2	2	0	2	0	MAS	
Third Cliff, Scituate	13	13	12	12	0	MAS	
White Horse Beach, Plymouth	2	2	4	2	0	Plymouth	
Wollaston Beach, Quincy	7	7.5	7	7.5	2	DCR	1 non-nesting pair
<b>UPPER CAPE</b>							
Acapesket Beach, Falmouth	0	0	0	0	0	MAS	
Allens Harbor (private), Harwich	0	ND	ND	0	ND	MAS	
Bank Street Beach, Harwich	3	3	11	2	0	Harwich	
Bassetts Island, Bourne	1	1	0	1	0	MAS	
Bayview Ave/Howe's, Dennis	3	3	9	3	0	MAS	
Bayview, Dennis	0	0	0	0	0	Dennis	
Belmont Condos, Harwich	1	1	0	1	0	MAS	1 pair renested at Strandway.
Black Beach, Falmouth	0	0	0	0	0	MAS	
Bone Hill Road, Barnstable	0	ND	ND	0	ND	MAS	
Chapin Beach, Dennis	3	3	6	3	0	Dennis	
Chapoquoit Beach, Falmouth	0	0	0	0	0	MAS	
Cold Storage Beach, Dennis	0	0	0	0	0	Dennis	
Corporation Beach, Dennis	0	0	0	0	0	Dennis	
Craigville Beach, Barnstable	1	1	2	1	0	MAS	
Crosby Landing, Brewster	5	6	7	6	0	MAS	1 non-nesting pair
Crowes Pasture (Cole's Pond) / Quivett Neck, Dennis	4	4	10	4	0	Dennis	
Dead Neck Sampsons Island, Barnstable	27	27	51	27	0	MAS	
Depot Street, Dennis	0	ND	ND	0	ND	Dennis	Limited surveys
Dowses Beach, Barnstable	2	3	2	3	0	Barnstable	
Dr. Botero, Dennis	2	2	0	2	0	MAS	1 non-nesting pair

Site	Index Count <sup>a</sup> (no. pairs)	Total Count <sup>b</sup> (no. pairs)	No. chicks fledged <sup>c</sup>	No. pairs with fledged data <sup>c</sup>	No. unpaired adults <sup>d</sup>	Source <sup>e</sup>	Notes <sup>f</sup>
East Sandwich Beach, East Sandwich	3	3	6	3	0	Sandwich	
Falmouth Harbor Jetty, Falmouth	1	1	1	1	0	MAS	
Flume Pond, Falmouth	1	1	0	1	0	MAS	
Fortes Beach, Barnstable	0	1	0	1	0	MAS	1 non-nesting pair thought to have nested at Squaw Island Rd
Glendon Beach, Dennis	0	ND	ND	0	ND	Dennis	Limited surveys
Gray's Beach, Yarmouth	1.5	1.5	0	1.5	1	MAS	1 non-nesting pair. Site surveyed 1x after Index Count
Great Island Causeway, Yarmouth	5	5	9	5	0	MAS	
Great Island - Smith Point, Yarmouth	8	8	13	8	0	MAS	
Green Dunes Barnstable	5	5	7	5	0	MAS	1 non-nesting pair. New PIPL site
Haigis to Inman Rd., Dennis	0	ND	ND	0	ND	Dennis	Limited surveys
Harbor View, Dennis	0	0	0	0	0	Dennis	
Hen Cove, Bourne	0	ND	ND	0	ND	MAS	
Howe's St. Beach, Dennis	0	0	0	0	0	Dennis	
Inman Beach, Dennis	0	ND	ND	0	ND	Dennis	Limited surveys
Kalmus Beach, Barnstable	4	4	1	4	0	Barnstable	
Linnell Landing Beach, Brewster	0	ND	ND	0	ND	MAS	
Little Island Beach, Falmouth	0	0	0	0	0	MAS	
Long Beach, Barnstable	13	14	16	14	0	MAS	2 non-nesting pairs
Mashnee Dike, Bourne	1	1	2	1	0	USACOE	
Maushop Village – Rock Landing, Mashpee	0	ND	ND	0	ND	MAS	
Mayflower Beach, Dennis	0	0	0	0	0	Dennis	
Memorial Beach/Covell's, Barnstable	0	0	0	0	0	MAS	

Site	Index Count <sup>a</sup> (no. pairs)	Total Count <sup>b</sup> (no. pairs)	No. chicks fledged <sup>c</sup>	No. pairs with fledged data <sup>c</sup>	No. unpaired adults <sup>d</sup>	Source <sup>e</sup>	Notes <sup>f</sup>
Menauhant Beach, Falmouth	0	0	0	0	0	MAS	
Menauhant Yaucht Club, Falmouth	1	1	2	1	0	MAS	
Metcalf Memorial, Dennis	0	ND	ND	0	ND	Dennis	Limited surveys
Monument Beach, Bourne	0	ND	ND	0	ND	MAS	
Mussel Point, Barnstable	0	ND	ND	0	ND	MAS	
New Seabury, Mashpee	4	4	8	4	2	MAS	
Paine's Creek, Brewster	0	ND	ND	0	ND	MAS	
Popponeset Spit, Mashpee	11	12	17	12	0	MAS	1 non-nesting pair
Radio City Beach, Yarmouth	1	1	0	1	0	MAS	
Raycroft Beach, Dennis	0	ND	ND	0	ND	Dennis	Limited surveys
Red Jacket Inn, Yarmouth	1	1	2	1	0	MAS	
Red River Beach, Harwich	2	2	8	2	0	Harwich	
Rushy Marsh Pond, Barnstable	0	0	0	0	0	MAS	
Sagamore Beach Sandwich, Sandwich	7	7	8	6	0	MAS	1 pair had 1 <sup>st</sup> nest at Scusset Beach State Reservation
Sandy Neck Beach Park, Barnstable	64.5	65	86	65	1	Barnstable	1 unpaired adult stays from failed nesting pair
Saquatucket Bluffs (private), Harwich	0	ND	ND	0	ND	MAS	
Scorton Neck (Torrey), Sandwich	6	8	12	8	0	MAS	1 non-nesting pair
Scorton Shores, East Sandwich	1	1	0	1	0	Sandwich	
Scorton Shores, Sandwich	3	3	9	3	0	MAS	
Scusset Beach State Reservation, Sandwich	1	2	2	2	0	MAS	1 pair renested at Sagamore Beach-Sandwich
Sea Street/Keyes Beach, Barnstable	0	ND	ND	0	ND	MAS	
Sea St. North side) Dennis	1	1	4	1	0	MAS	

Site	Index Count <sup>a</sup> (no. pairs)	Total Count <sup>b</sup> (no. pairs)	No. chicks fledged <sup>c</sup>	No. pairs with fledged data <sup>c</sup>	No. unpaired adults <sup>d</sup>	Source <sup>e</sup>	Notes <sup>f</sup>
Sea Street, West Dennis	0	ND	ND	0	ND	Dennis	Limited surveys
Sea Street Beach, Dennis	0	0	0	0	0	Dennis	
Seagull Beach, Yarmouth	9	9	16	9	0	MAS	
Sesuit Harbor Beach, Dennis	0	0	0	0	0	Dennis	
Sippewisset, Falmouth	2	2	4	2	0	MAS	
Smuggler's Beach/Bass River Beach Yarmouth	1	1	0	1	0	MAS	New PIPL site
Smuggler's Beach to Red Jacket, Yarmouth	0	ND	ND	0	ND	MAS	
South Cape Beach, Mashpee	7	7	4	7	0	MAS	
South Village (private) Dennis	0	0	0	0	0	MAS	
South Village Beach, Dennis	1	1	0	1	0	Dennis	
Spring Hill Beach, Sandwich	9	9	18	9	0	Sandwich	
Squaw Island, Barnstable	13	13	13	13	0	MAS	
Squaw Island Road, Barnstable	1	1	1	1	0	MAS	1 nesting pair also non-nesting pair at Fortes Beach
Standish Way/Colonial Acres, Yarmouth	0	ND	ND	0	ND	MAS	
Stone Horse Yacht Club, Harwich	0	ND	ND	0	ND	MAS	
Strandway, Harwich	0	1	0	1	0	MAS	1 pair had 1 <sup>st</sup> nest at Belmont Condos. New PIPL site
Surf Drive, Falmouth	2	2	0	2	0	MAS	1 pair thought to have renested at Trunk River
Swan River/Miramar, Dennis	2	2	4	2	0	MAS	
Town Neck Beach, Sandwich	2	2	4	2	0	Sandwich	
Trunk River/Moors, Falmouth	2	3	2	3	0	MAS	1 pair thought to have 1 <sup>st</sup> nest at Surf Drive
Washburn Island, Falmouth	3	4	2	4	0	MAS	
West Dennis Beach, Dennis	12	12	18	12	0	Dennis	



Site	Index Count <sup>a</sup> (no. pairs)	Total Count <sup>b</sup> (no. pairs)	No. chicks fledged <sup>c</sup>	No. pairs with fledged data <sup>c</sup>	No. unpaired adults <sup>d</sup>	Source <sup>e</sup>	Notes <sup>f</sup>
Wings Island, Brewster	0	0	0	0	0	MAS	
Winstead Inn, Harwich	2	2	7	2	0	MAS	
Woodneck Beach, Falmouth	0	0	0	0	0	MAS	
Wychmere, Harwich	3	3.5	6	3.5	1	MAS	1 unpaired adult remained from non-nesting pair
24 Willis Lane, Falmouth	1	1	1	1	1	MAS	
<b>LOWER CAPE</b>							
Andrew Harding Lane, Chatham	0	ND	ND	0	ND	MAS	
Armstrong Beach, Provincetown	11	11	14	11	0	NPS	
Ballston Town Beach, Eastham	0	0	0	0	0	MAS	
Ballston Town Beach, Truro	0	0	0	0	0	MAS	
Ballston, Truro	2	2	7	2	0	NPS	
Beach Point, Truro	3	3	3	3	0	MAS	
Boat Meadow, Eastham	0	0	0	0	0	MAS	
Bound Brook, Wellfleet	4	4	9	4	0	NPS	
Cahoon Hollow, Wellfleet	1	1	2	1	0	NPS	
Chatharbor Lane, Chatham	1	1	0	1	0	MAS	
Claflin Landing/Chatham Bars Inn, Chatham	0	ND	ND	0	ND	MAS	
Coast Guard Beach, Eastham	5	5	1	5	0	NPS	
Coast Guard Beach, Truro	0	ND	ND	0	ND	MAS	
Coast Guard Truro, Truro	8	8	15	8	0	NPS	
Cockle Cove, Chatham	1	1	0	1	0	MAS	1 non-nesting pair also non-nesting at Ridgevale Beach
Corn Hill Beach, Truro	3	3	4	3	0	MAS	
Duck Harbor, Wellfleet	10	11	7	11	0	NPS	
Dyer Prince Beach, Eastham	1	1	4	1	0	MAS	
Exit 9, Provincetown	3	4	7	4	0	NPS	
Field Point/Fox Is. WMA, Wellfleet	1.5	1.5	0	1.5	1	MAS	

Site	Index Count <sup>a</sup> (no. pairs)	Total Count <sup>b</sup> (no. pairs)	No. chicks fledged <sup>c</sup>	No. pairs with fledged data <sup>c</sup>	No. unpaired adults <sup>d</sup>	Source <sup>e</sup>	Notes <sup>f</sup>
First Encounter Beach, Eastham	0	0	0	0	0	MAS	
Fisher Beach, South Truro	3	3	9	3	0	MAS	
Fisher Beach, Truro	3	3	8	3	0	MAS	
Forest Beach, Chatham	4	4	11	4	0	MAS	
Great Is., Wellfleet	5	5	3	5	0	NPS	
Harding Beach, Chatham	7	7	10	7	0	MAS	
Harding Shores, Chatham	0	ND	ND	0	ND	MAS	
Hatches Harbor, Provincetown	4	4	6	4	0	NPS	
Head of the Meadow, Truro	6	6	12	6	0	NPS	1 pair renested at High Head, Truro
Herring Cove, Provincetown	1	2	0	2	0	NPS	
Head of the Meadow, Truro (Town Beach)	0	0	0	0	0	MAS	
High head, Truro	10	9	9	10	0	NPS	1 pair had 1 <sup>st</sup> nest at Head of the Meadow, Truro
Indian Neck, Wellfleet	1	1	0	1	0	MAS	
Jeremy Point, Wellfleet	7	7	7	7	0	NPS	
Lecount Hollow, Wellfleet	ND	ND	ND	0	ND	NPS	Not surveyed during Index Count and only 1x after
Lieutenant Island – SW, Wellfleet	1	1	0	1	0	MAS	
Lieutenant Island-NW, Wellfleet	3	3	2	3	0	MAS	2 non-nesting pairs
Lieutenant Island - The Hook, Wellfleet	0	ND	ND	0	ND	MAS	
Linnell Lane, Chatham	ND	ND	ND	0	ND	Chatham	Not surveyed during Index Count and only 1x after
Longnook, Truro	3	2.5	7	2.5	1	NPS	
Marconi Beach, Wellfleet	1	1	3	1	0	NPS	
Marconi Station, Wellfleet	5	5	11	5	0	NPS	
Minimoy Island, Chatham	0	0	0	0	0	USFWS	
Mission Bell, Provincetown	8	8	14	8	0	NPS	1 non-nesting pair also non-nesting at Race Point South
Morris Island, Chatham	1	1	4	1	0	USFWS	

Site	Index Count <sup>a</sup> (no. pairs)	Total Count <sup>b</sup> (no. pairs)	No. chicks fledged <sup>c</sup>	No. pairs with fledged data <sup>c</sup>	No. unpaired adults <sup>d</sup>	Source <sup>e</sup>	Notes <sup>f</sup>
Morris Island Dike/ Hardings Beach Point, Chatham	0	ND	ND	0	ND	MAS	
Morris Island NW (dredge spoil), Chatham	0	ND	ND	0	ND	MAS	
Mouth of Herring River - Mayo Beach, Wellfleet	0	ND	ND	0	ND	MAS	
Nauset Light Beach, Eastham	ND	0	0	0	ND	NPS	Not surveyed during Index Count
Newcomb Hollow, Wellfleet	2	2	7	2	0	NPS	
North (Nauset) Beach, Chatham	28	28	18	28	0	Chatham	
North Beach Island, Chatham	23	23	24	23	0	Chatham	
North Monomoy Island, Chatham	ND	ND	ND	0	ND	USFWS	Not surveyed during Index Count and only 1x after
North Spit, Orleans	26.5	26.5	19	26.5	1	Orleans	
Old Wharf, Wellfleet	0	ND	ND	0	ND	MAS	
Pleasant St. Beach, Chatham	2	2	3	2	0	MAS	
Quitnesset, Chatham	8	8	8	8	0	MAS	
Rock Harbor, Orleans	0	ND	ND	0	ND	MAS	
Race Point Beach, Provincetown	5	5	10	5	0	NPS	
Race Point North, Provincetown	14	14	23	14	0	NPS	
Race Point South, Provincetown	5	4	4	5	0	NPS	1 non-nesting pair also non-nesting at Mission Bell
Ridgevale Beach, Chatham	4	3	5	4	0	MAS	1 non-nesting pair also non-nesting at Cockle Cove
Ryder Beach, Truro	0	0	0	0	0	MAS	
Skaket Beach, Orleans	0	0	0	0	0	Orleans	

Site	Index Count <sup>a</sup> (no. pairs)	Total Count <sup>b</sup> (no. pairs)	No. chicks fledged <sup>c</sup>	No. pairs with fledged data <sup>c</sup>	No. unpaired adults <sup>d</sup>	Source <sup>e</sup>	Notes <sup>f</sup>
South Beach - Middle Island, Chatham	5	5	3	4	0	MAS	
South Beach (Nauset), Orleans	11	11	8	11	0	Orleans	
South Beach (North of Break), Chatham	2	2	1	2	0	MAS	1 non-nesting pair
South Beach (South of Break), Chatham	11	12	2	12	0	MAS	1 non-nesting pair
South Monomoy Island, Chatham	36	37	28	34	0	USFWS	3 nesting pairs with unknown number of chicks fledged
South Sunken Meadow, Eastham	1	1	0	1	0	MAS	
Tern Island, Chatham	5	5	6	4	0	MAS	
White Crest Beach, Wellfleet	1	1	2	1	0	NPS	
Wood End/Long Point, Provincetown	14.5	14.5	21	14.5	1	NPS	1 non-nesting pair
<b>BUZZARDS BAY</b>							
Baker's Beach, Westport	2	2	2	2	0	LCES	
Barney's Joy/Little Beach, Dartmouth	24	24	17	24	0	MAS	
Beach Ave, Westport	0	0	0	0	0	MAS	
Blankenship Cove, Marion	0	ND	ND	0	ND	MAS	
Bourne Cove, Wareham	0	ND	ND	0	ND	MAS	
Cedar Island, Wareham	0	ND	ND	0	ND	MAS	
Cromeset, Wareham	0	ND	ND	0	ND	MAS	
Demarest Lloyd, Dartmouth	4	5	3	5	0	DCR	1 non-nesting pair
East Beach, Westport	1	2	0	2	0	MAS	
Elephant Rock Westport	1	1	0	1	0	LCES	
Fish Island, Fairhaven	0	ND	ND	0	ND	DFW	Single survey on 5/28
Gravel Island, Marion	0	ND	ND	0	ND	MAS	
Goosberry Island, Westport	1	1	3	1	0	DCR	New PIPL site

Site	Index Count <sup>a</sup> (no. pairs)	Total Count <sup>b</sup> (no. pairs)	No. chicks fledged <sup>c</sup>	No. pairs with fledged data <sup>c</sup>	No. unpaired adults <sup>d</sup>	Source <sup>e</sup>	Notes <sup>f</sup>
Horseneck Beach, Westport	13	13	3	13	0	DCR	1 non-nesting pair
Little Harbor Beach, Wareham	6	6	18	5	0	MAS	
Little Island, Marion	0	0	0	0	0	MAS	
Long Beach Point, Wareham	3	3	5	3	0	MAS	
Long Island, Fairhaven	0	ND	ND	0	ND	DFW	Single survey on 5/30
Meadow Island, Marion	0	ND	ND	0	ND	MAS	
Nonquitt, Dartmouth	5	5	7	5	0	LCES	
Onset Beach Hotel Rd., Wareham	0	ND	ND	0	ND	MAS	
Padanaram Harbor, South Dartmouth	2	2	1	2	0	MAS	
Pine Island (Angelica Point and Strawberry Point), Mattapoisett	2	2	ND	0	0	DFW	Single survey on 5/30
Planting Island, Marion	0	ND	ND	0	ND	MAS	
Planting Island Cove, Marion	0	ND	ND	ND	ND	MAS	
Ram Is., Marion	1	1	ND	0	0	MAS	Site surveyed 1x after IC
Ram Is. Mattapoisett, Mattapoisett	0	0	0	0	0	DFW	
Richmond Pond, Westport	2	2	2	2	0	LCES	
Round Hill Beach, Dartmouth	0	1	0	1	0	MAS	
Round Is., Fairhaven	0	ND	ND	0	ND	DFW	Only surveyed during Index Count
Salters Pond, Dartmouth	3	5	4	5	0	LCES	
South Shore Marshes, Fairhaven	0	ND	ND	0	ND	DFW	Single survey on 5/28
Stewart's Island, Marion	0	ND	ND	0	ND	MAS	
Stony Point Dike, Wareham	4	4	2	4	0	USACOE	
Swift's Beach, Wareham	0	ND	ND	0	ND	MAS	
Ward's Rock, Fairhaven	0	ND	ND	0	ND	DFW	Single survey on 5/28

Site	Index Count <sup>a</sup> (no. pairs)	Total Count <sup>b</sup> (no. pairs)	No. chicks fledged <sup>c</sup>	No. pairs with fledged data <sup>c</sup>	No. unpaired adults <sup>d</sup>	Source <sup>e</sup>	Notes <sup>f</sup>
West Island, Fairhaven	3	3	4	3	0	DCR	
West Island, Fairhaven	1	1	ND	0	0	DFW	Single survey on 5/28, new PIPL site
West Island Town Beach, Fairhaven	4	5	4	5	0	LCES	
Westport Town Beach, Westport	5	5	11	5	0	MAS	
Winsegansett Heights, Fairhaven	2	2	4	2	0	LCES	
<b>ELIZABETH ISLANDS</b>							
Barges Beach, Cuttyhunk	4	4	2	4	0	MAS	
Church's Beach, Gosnold	0	ND	ND	0	ND	MAS	
Copicut Neck, Gosnold	0	0	0	0	0	MAS	
Nashawena Island -Baret's Island Gosnold	ND	ND	ND	ND	ND	DFW	Not surveyed in 2024
Nashawena Island-Canapitsit, Gosnold	ND	ND	ND	ND	ND	DFW	Not surveyed in 2024
Nashawena Island Quicks Hole, Gosnold	ND	ND	ND	ND	ND	DFW	Not surveyed in 2024
Naushon Is. - Crescent Beach, Gosnold	1	1	ND	0	0	DFW	Only surveyed during Index Count
Naushon Is. - French Watering Hole, Gosnold	ND	ND	ND	ND	ND	DFW	Not surveyed in 2024
Naushon Is. - Kettle Cove, Gosnold	1	1	ND	0	0	DFW	Only surveyed during Index Count
Naushon Is. - Tarpaulin Cove, Gosnold	1	1	ND	0	0	DFW	Only surveyed during Index Count
Naushon Is. - West Beach, Gosnold	0	ND	ND	0	ND	DFW	Only surveyed during Index Count
Naushon Is. – Robinson's Hole, Gosnold	0	ND	ND	0	ND	DFW	Only surveyed during Index Count
Pasque Island-Cobbly, Gosnold	ND	ND	ND	ND	ND	DFW	Not surveyed in 2024

Site	Index Count <sup>a</sup> (no. pairs)	Total Count <sup>b</sup> (no. pairs)	No. chicks fledged <sup>c</sup>	No. pairs with fledged data <sup>c</sup>	No. unpaired adults <sup>d</sup>	Source <sup>e</sup>	Notes <sup>f</sup>
Pasque Island-Quicks Hole, Gosnold	ND	ND	ND	ND	ND	DFW	Not surveyed in 2024
Pasque Island-Robinson's Hole, Gosnold	ND	ND	ND	ND	ND	DFW	Not surveyed in 2024
West Pond, Gosnold	0	ND	ND	ND	0	MAS	
<b>MARTHA'S VINEYARD</b>							
Arruda's Point / The Jetties, Edgartown	1	1	3	1	0	TTOR	
Beach Rd. Causeway, Tisbury	0	0	0	0	0	MAS	
Bend-in-the-Road Beach, Edgartown	0	0	0	0	0	MAS	
Big Gravel Is., Oak Bluffs	0	0	0	0	0	MAS	
Black Point Pond, Chilmark	1	1	0	1	0	BW	
Caleb's Pond, Edgartown	0	ND	ND	0	ND	BW	Single survey during Index Count
Caleb's Pond Preserve, Edgartown	0	0	0	0	0	MVLBC	
Cape Higgon, Chilmark	0	ND	ND	0	ND	BW	Only surveyed during Index Count
Cape Pogue Elbow / The Narrows, Edgartown	4	4	10	4	0	TTOR	
Cedar Tree Neck, West Tisbury	0	0	0	0	0	BW	
Chappaquiddick Point Beach, Edgartown	0	0	0	0	0	MVLBC	
Chilmark Pond, Chilmark	1	1	0	1	0	BW	
Chilmark Pond Preserve, Chilmark	0	ND	ND	0	ND	MVLBC	Site surveyed 1x after Index Count
Cove Meadow Preserve, Edgartown	0	0	0	0	0	MVLBC	
Cow Bay, Edgartown	0	0	0	0	0	MAS	
Cracktuxet Trust Beach, Edgartown	2	2	0	2	0	BW	

Site	Index Count <sup>a</sup> (no. pairs)	Total Count <sup>b</sup> (no. pairs)	No. chicks fledged <sup>c</sup>	No. pairs with fledged data <sup>c</sup>	No. unpaired adults <sup>d</sup>	Source <sup>e</sup>	Notes <sup>f</sup>
Dogfish Bar, Aquinnah	7	7	16	7	0	BW	
Dougs Cove Preserve, Oak Bluffs	0	0	0	0	0	MVLBC	
East Tashmoo, Tisbury	0	0	0	0	0	MAS	
Eastville Beach, Oak Bluffs	1	1	4	1	0	MAS	
Edey's Island, Chilmark	0	0	0	0	0	MAS	
Edgartown Great Pond (Job's Neck), Edgartown	8	9	2	9	0	BW	
Edgartown Great Pond Beach, Edgartown	0	0	0	0	0	MVLBC	
Great Rock Bight Preserve, Chilmark	0	ND	ND	0	ND	MVLBC	Site surveyed 1x after Index Count
Harthaven, Oak Bluffs	1	1	0	1	0	MAS	
Haystack Island, Edgartown	0	0	0	0	0	MAS	
James Pond Preserve, West Tisbury	0	0	0	0	0	MVLBC	
Joseph Sylvia State Beach, Edgartown	0	0	0	0	0	MAS	
Lamberts Cove West, Tisbury	2	2	4	2	0	BW	
Leland / East Beach, Edgartown	8	8	5	8	0	TTOR	
Lighthouse Beach, Edgartown	4	4	14	4	0	BW	
Little Beach / Eel Pd., Edgartown	8	8	8	8	0	BW	
Little Gravel Is., Oak Bluffs	0	0	0	0	0	MAS	
Little Neck, Edgartown	0	0	0	0	0	TTOR	
Lobsterville Beach, Aquinnah	5.5	5.5	11	5.5	1	MAS	
Long Point, West Tisbury	2	2	0	2	0	TTOR	



Site	Index Count <sup>a</sup> (no. pairs)	Total Count <sup>b</sup> (no. pairs)	No. chicks fledged <sup>c</sup>	No. pairs with fledged data <sup>c</sup>	No. unpaired adults <sup>d</sup>	Source <sup>e</sup>	Notes <sup>f</sup>
Lucy Vincent Beach, Chilmark	1	2	3	2	0	BW	
Menemsha Neck Preserve, Aquinnah	0	ND	ND	0	ND	MVLBC	Site surveyed 1x after Index Count
Mink Meadows, Tisbury	2	2	3	2	0	MAS	
Moshup Beach, Aquinnah	0	0	0	0	0	MVLBC	
Nomans Land Island NWR, Chilmark	ND	ND	ND	0	ND	USFWS	Single survey outside Index Count
North Neck Highlands Preserve, Edgartown	0	ND	ND	0	ND	MVLBC	Site surveyed 1X after Index Count
Norton Point Beach, Edgartown	9	9	0	9	0	MAS	2 non-nesting pairs
Oyster Pond, Edgartown	1	1	1	1	0	BW	
Paqua Pond, Edgartown	0	0	0	0	0	BW	
Paul's Point, West Tisbury	0	0	0	0	0	BW	
Pease's Pond, Edgartown	0	ND	ND	0	ND	BW	Site surveyed 1x after Index Count
Philbin Beach, Aquinnah	1	1	0	1	0	BW	
Quammox Preserve, Edgartown	0	0	0	0	0	MVLBC	
Quansoo, Chilmark	4	4	3	4	0	MAS	
Quenomica Preserve South Edgartown	0	0	0	0	0	MVLBC	
Sarson Is., Oak Bluffs	0	0	0	0	0	MAS	
Sepiessa Point Reservation, West Tisbury	0	0	0	0	0	MVLBC	
Seven Gates, West Tisbury	1	1	0	1	0	BW	
Short Cove Preserve, West Tisbury	0	0	0	0	0	MVLBC	
South Beach, Edgartown	0	ND	ND	0	ND	BW	Only surveyed during Index Count
Spring Point, Chilmark	0	0	0	0	0	BW	
Squibnocket Beach/Long Beach, Chilmark	2	2	1	2	0	BW	

Site	Index Count <sup>a</sup> (no. pairs)	Total Count <sup>b</sup> (no. pairs)	No. chicks fledged <sup>c</sup>	No. pairs with fledged data <sup>c</sup>	No. unpaired adults <sup>d</sup>	Source <sup>e</sup>	Notes <sup>f</sup>
Squibnocket Pond Reservation, Aquinnah	1	1	0	1	0	MVLBC	
Stonewall Beach, Chilmark	0	0	0	0	0	BW	
Sylvia State Beach Edgartown, Edgartown	0	0	0	0	0	MAS	
Sylvia State Beach Oak Bluffs, Oak Bluffs	2	2	6	2	0	MAS	
Tashmoo Preserve, Tisbury	0	0	0	0	0	MVLBC	
Tisbury Great Pond Beach, West Tisbury	0	0	0	0	0	MVLBC	
Wasque, Edgartown	3	3	4	3	0	TTOR	
Watcha Pond, West Tisbury	0	ND	ND	0	ND	BW	Site surveyed 1x after Index Count
West Tashmoo, Tisbury	2	2	0	2	0	BW	
Wilfrids Pond Preserve, Tisbury	0	0	0	0	0	MVLBC	
Windmill House Edgartown	6	6	3	6	0	BW	1 non-nesting pair
Yorke - Allen Point (now Gammell Point), Edgartown	0	0	0	0	0	MAS	
<b>NANTUCKET</b>							
40th Pole, Nantucket	3	3	2	3	0	Nantucket	
Capaum Pond, Nantucket	0	1	0	1	0	NCF	
Chase Links, Nantucket	1	1	0	1	0	MAS	
Coatue, Nantucket	13	15	15	15	0	NCF	
Coatue Harbor, Nantucket	0.5	0	0	0	1	TTOR	
Coskata-West Beach, Nantucket	5.5	5.5	1	5.5	1	TTOR	
Coskata-East Beach, Nantucket	0	0	0	0	0	TTOR	
Dionis Beach, Nantucket	2	2	3	2	0	Nantucket	
Eel Point, Nantucket	15	16	6	14	0	NCF	
Great Point, Nantucket	3	3	1	3	0	TTOR	

Site	Index Count <sup>a</sup> (no. pairs)	Total Count <sup>b</sup> (no. pairs)	No. chicks fledged <sup>c</sup>	No. pairs with fledged data <sup>c</sup>	No. unpaired adults <sup>d</sup>	Source <sup>e</sup>	Notes <sup>f</sup>
Hallowell Lane Beach, Nantucket	1	1	3	1	0	Nantucket	
Hither Creek, Nantucket	0	0	0	0	0	MAS	
Hoicks Hollow, Nantucket	0	0	0	0	0	MAS	
Hummock and West Hummock Ponds, Nantucket	0	0	0	0	0	NCF	
Jetties Beach, Nantucket	1	1	0	1	0	Nantucket	
Little Neck, Nantucket	0	0	0	0	0	NCF	
Long Pond, Nantucket	0	0	0	0	0	NCF	
Low Beach, Nantucket	5	5	0	5	0	Nantucket	
Madaket Beach, Nantucket	1	1	0	1	0	Nantucket	
Millie's Bridge, Nantucket	0	0	0	0	0	MAS	
Monomoy Creeks, Nantucket	0	0	0	0	0	NCF	
Muskeget Island, Nantucket	4	4	11	4	0	Nantucket	
Nantucket NWR (Great Point) Nantucket	1	1	0	1	0	USFWS	
Polpis Harbor (Medouie Creek and Pocomo Meadows), Nantucket	0	0	0	0	0	NCF	
Quaise Point, Nantucket	0	0	0	0	0	Nantucket	
Quidnet/Sesachacha Pond/Greenhills, Nantucket	2	2	3	2	0	MAS	One pair though to have 1 <sup>st</sup> nest at Squam Pond
Sheep Pond, Nantucket	1	1	0	1	0	NCF	
Smith's Point, Nantucket	3	3	0	3	0	MAS	
Smith Point / Esther Is., Nantucket	6	6	6	6	0	Nantucket	
South Pastures (Madequecham Valley to Tom Nevers), Nantucket	0	0	0	0	0	NCF	
Squam Pond, Nantucket	0	0	0	0	0	NCF	

Site	Index Count <sup>a</sup> (no. pairs)	Total Count <sup>b</sup> (no. pairs)	No. chicks fledged <sup>c</sup>	No. pairs with fledged data <sup>c</sup>	No. unpaired adults <sup>d</sup>	Source <sup>e</sup>	Notes <sup>f</sup>
Squam Pond, Nantucket	0	1	0	1	0	MAS	One pair renested at Quidnet
Surfside/Western Ave., Nantucket	0	0	0	0	0	Nantucket	
The Galls, Nantucket	2.5	2.5	1	2.5	1	TTOR	
The Glades, Nantucket	ND	ND	ND	0	ND	TTOR	Not surveyed during Index Count and only 1x after
The Haulover, Nantucket	0	0	0	0	0	NCF	
Tom Nevers, Nantucket	0	0	0	0	0	Nantucket	
Tuckernuck Is. - Bigelow's Point, Nantucket	3	3	0	3	0	TLT	
Tuckernuck Is. – Charlie's Point/South Beach, Nantucket	1	1	0	1	0	TLT	
Tuckernuck Is. - East Pond, Nantucket	0	0	0	0	0	TLT	
Tuckernuck Is. - North Pond, Nantucket	1	2	0	2	0	TLT	
Tuckernuck Is. - Whale Point, Nantucket	6	6	0	6	0	TLT	
UMass Field Station, Nantucket	0	0	0	0	0	NCF	
Wanoma/Tom Neveres Nantucket	1	1	0	1	0	MAS	
Washing Pond East, Nantucket	0	0	0	0	0	Nantucket	
Washing Pond Nantucket	1	1	0	1	0	MAS	
Wauwinet, Nantucket	1	1	1	1	0	MAS	
Western Ave (west of Surfside), Nantucket	0	0	0	0	0	MAS	
187 Eel Point, Nantucket	1	1	0	1	0	Nantucket	