



# Massachusetts Disability Quarterly

A Publication from the

Massachusetts Office On Disability

One Ashburton Place, Room 1305 Boston, MA 02108



Vol. 3 Issue 1

*Full & Equal Participation in All Aspects of Life by All Persons With Disabilities*

Summer 2017

## Save the Date

Massachusetts Office on Disability

## Summit 2017

Topic: Employment Opportunity

# 9-15-17

The Massachusetts Office on Disability (MOD) will hold its third annual Disability Summit this year.

**Date:** Friday, September 15, 2017

**Time:** 10:00AM-Noon

**Location:** Great Hall

Massachusetts State House

24 Beacon St. Boston, MA 02133

This year's Summit will continue to build on the 2016 Summit theme of *employment opportunity for persons with disabilities*. Details to come!

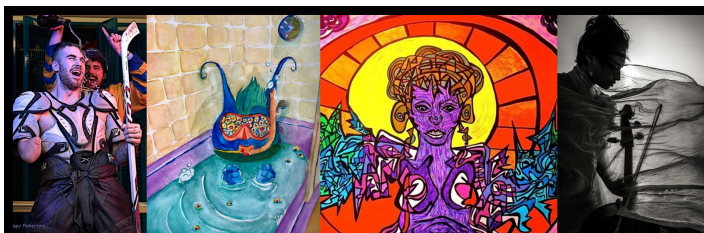
## Municipal ADA Grant

The Massachusetts Office on Disability (MOD) is accepting applications for the Municipal ADA Improvement Grant Program. Grants support capital improvements specifically dedicated to improving programmatic access for persons with disabilities. Eligible applicants include any Massachusetts city, town, special purpose district and/or regional governmental organization. Grants of up to \$250,000 will be awarded to successful applicants. Examples of access improvement include the addition of features such as ramps, elevators, power lifts, signage, communication access devices, and curb cuts.

### Application Process & Deadlines

The deadline for the Year 1 Application period is June 30, 2017. All Year 2, **FY18** grants must be submitted online.

Please check the ADA Grant webpage at [www.mass.gov/mod/adagrants](http://www.mass.gov/mod/adagrants) for updates and application instructions. Please email questions to [mod-grants@massmail.state.ma.us](mailto:mod-grants@massmail.state.ma.us).



# MOD

# Call for Art

## Deadline: August 1, 2017

[www.mass.gov/mod/art](http://www.mass.gov/mod/art)

## IN THIS ISSUE

- Save the Date: Summit 2017
- MOD Call for Art
- Municipal ADA Grant
- Updates to ER Program
- How to Contact MOD
- Jeffrey's Access Corner: Sign Placement
- Summer 2017 Calendar

# Personal Emergency Preparedness Program Updates

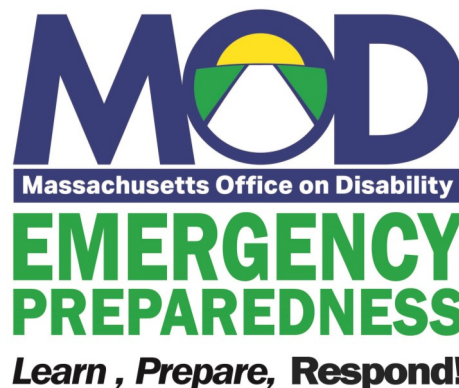
*DaLonn Pearson*

The Massachusetts Office on Disability (MOD) Personal Emergency Preparedness (ER) Training program has made several new updates. The program now has an official logo you will see on MOD's website, materials and on our new pop-up screen for trainings.

Our Personal [Emergency Preparedness Supplemental Information Packet](#) has been updated with new resources available online. The packet contains all handouts that are distributed in our ER trainings.

With help from Holyoke's Emergency Management Director and the Worcester Emergency Management Department, MOD's [Personal Emergency Preparedness Planning Workbook](#) has been created. By completing the Workbook, individuals will create a detailed, personal, written plan for emergencies using the "Personal Emergency Preparedness Checklist." A completed workbook will contain important information including the individual's emergency contact information; lists of medications, medical conditions, allergies, equipment, and vendors; health care provider contact information, and community hazards. The Workbook also contains instructions on how to locate local shelter, space to fill out an evacuation plan, and a list of items to include in an emergency kit.

The Personal Emergency Preparedness training map (also [available online](#) with a [supplemental PDF list](#)) indicates every city or town that has held ER Training(s) since 2007. If you would like MOD to host one of these meetings for your organization or group, please feel free to contact DaLonn Pearson, Emergency Preparedness Training Coordinator at (800) 322-2020 ext. 27332 or email DaLonn at [DaLonn.Pearson@massmail.state.ma.us](mailto:DaLonn.Pearson@massmail.state.ma.us).



This program is funded under a grant from FEMA's Grant Program Directorate, U.S. Department of Homeland Security.

## How to Contact MOD

The Massachusetts Office on Disability (MOD) provides information, technical assistance, training, and advocacy. MOD does not provide disability benefits or emergency services. MOD answers questions regarding disability rights, access, and resources.

Due to recent changes, MOD no longer has the ability to provide unscheduled walk-in meetings with individuals. Most of the services MOD offers can be provided over the phone or through email. Since our last newsletter issue, we have refined our new contact process further.

If you visit MOD's office and do not have an appointment with a staff member, you will be asked to complete a brief form with your contact information and a staff member will follow up with you through your preferred method of contact. MOD reviews inquiries and requests for assistance and follows up with each individual in a timely manner in the order in which requests are received. The best way to reach MOD is by calling 1-800-322-2020 or through our online email form: [www.mass.gov/mod/ContactUs](http://www.mass.gov/mod/ContactUs).

If you contact MOD by phone, you will notice a new automated phone system which is available during normal business hours (M-F, 9am-5pm). Voice prompts will ensure that you reach the appropriate department or staff member. If you are calling with any disability-related question, press **3 upon hearing the voice prompt**.

Next, press **1** for questions about reasonable accommodations, disability resources and benefits, and disability discrimination (e.g. violations of the Americans with Disabilities Act or Fair Housing Act).

Press **3** for questions about architectural access (i.e. building codes and standards for physical access in facilities, and information for municipal Commissions on Disabilities). With both options, you will be instructed to leave a voicemail. Our voicemail system is monitored throughout the day and you will receive a call back in the order in which your message was received.

Additionally, you may find the answers to many questions by visiting our website, [www.mass.gov/mod](http://www.mass.gov/mod). We appreciate your patience and understanding as we work to streamline our services. We are committed to maintaining the quality of our service to the public.

# Jeffrey's Access Corner: Sign Placement

Jeffrey Dougan

This month's installment of JAC, will focus on significant differences between the 2010 Americans with Disabilities Act Design Standards (2010 ADADS) and both the 1991 Americans with Disabilities Act Design Standards (1991 ADADS) and the 2006 revision of the Massachusetts Architectural Access Boards rules and regulations (2006 MAAB) specific to the mounting location of signage at permanent rooms and spaces. In the next installment, I will discuss the different types of signage and the varying obligations related to the types of signs that are provided. As a reminder, the "most stringent" regulation needs to be met.

All three of the above referenced regulations require room designation signage to be provided for "permanent rooms and spaces" such as restrooms, meeting spaces, offices, and other rooms or spaces that are not subject to change frequently. The three regulations also require that these signs be located at a certain height and be installed, for a single door, on the latch side of the door.

This is where the regulations start to differ. The mounting location for doors other than a single door varies depending on the regulation:

## Double Doors with One Inactive Leaf:

The 2010 ADADS require that the sign be mounted on the "inactive" leaf. Both the 1991 ADADS and 2006 MAAB require that the sign be mounted on the "nearest adjacent wall." So which one is more stringent? It would appear that the 2010 ADADS is the most stringent in this case as it is the closest to meeting the single door requirement of mounting the sign on the latch side of the door.

## Double Doors with Two Active Leafs:

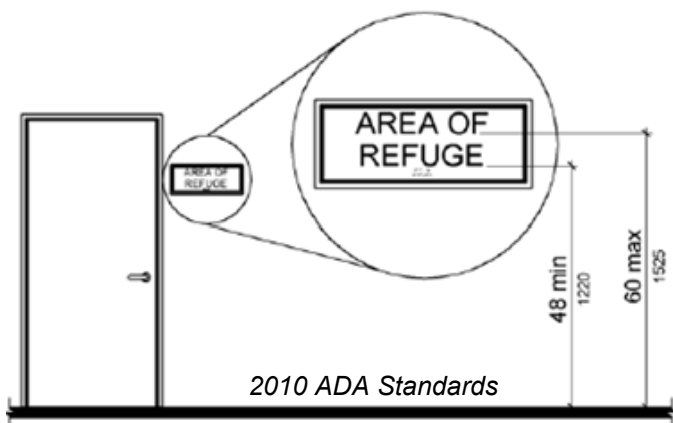
The 2010 ADADS is the only regulation to call out this specific instance. It would require that the signage be installed to the right of the right-hand door.

## No Wall Space at the Latch Side of a Single Door or at the Right Side of Double Doors:

All three regulations are consistent in requiring the sign to be mounted on the nearest adjacent wall.

Now that we know *where* to mount the sign depending on the type of door, we need to determine the height at which to mount the signage. This is where it gets interesting:

- The 1991 ADADS and 2006 MAAB require that the mounting location be at a height of 60 inches above the finished floor to the centerline of the sign.
- The 2010 ADADS does this a little differently. Rather than setting a finite position, the 2010 ADADS bases the height off of the location of the tactile characters on the sign. They require the sign be no lower than 48 inches above the finished floor measured from the baseline of the lowest tactile character, and no more than 60 inches above the finished floor measured from the baseline of the highest tactile character. The image below illustrates this:



Notice that the 2010 ADADS is more stringent than both the 1991 ADADS and 2006 MAAB requirements. So what do you have to do?

1. If you complied with the 1991 ADADS and/or the 2006 MAAB prior to March 15, 2012 (when the 2010 ADADS went into effect) – nothing. You are compliant. The 2010 ADADS does not require items compliant with the 1991 ADADS to be changed.
2. If you didn't comply with the 1991 ADADS and/or the 2006 MAAB prior to March 15, 2012, then you now need to comply with the 2010 ADADS.
3. If you are renovating or newly installing signs, then you need to comply with the 2010 ADADS.

If you are subject to either item 2 or 3 above, you have a conundrum. The MAAB requires the sign be installed at 60 inches to the centerline of the sign while the 2010 ADADS requires something different. If you solely comply with the 2006 MAAB, you are not in compliance with the 2010 ADADS and if you comply solely with the 2010 ADADS, you are not in compliance with the 2006 MAAB. Since the 2010 ADADS is the most stringent, you will need a variance from the MAAB since you will have to deviate from their regulations in order to comply with the 2010 ADADS. The good news is that the next revision of the MAAB regulations should harmonize this difference.

As always, if there are any questions related to this topic, please let me know. If you have topics you would like me to write about you can reach me by email at [jeff.dougan@state.ma.us](mailto:jeff.dougan@state.ma.us) or by phone at 617-727-7440 extension 27316.

# Summer 2017 Calendar

## June

**14, Wednesday**  
Flag Day

**17, Saturday**  
Bunker Hill Day

**18, Sunday**  
Father's Day

**20, Tuesday**  
Summer Solstice



## July

**Reflex Sympathetic Dystrophy Awareness Month**

**4, Tuesday**  
Independence Day

**22, Saturday**  
Fragile X Awareness Day

## August

**1, Tuesday**  
Deadline - Call for Art

**14, Monday**  
Social Security Day

**21, Monday**  
Senior Citizens' Day



Published by the Massachusetts Office on Disability. Executive Editor, David D'Arcangelo. Copy Editor, Rita DiNunzio.

## Massachusetts Disability Quarterly

Massachusetts Office on Disability  
One Ashburton Place  
Room 1305  
Boston, MA 02108

### Contact MOD

Phone: 617.727.7440  
Toll Free: 800. 322.2020  
Fax: 617.727.0965  
Web: [mass.gov/mod](http://mass.gov/mod)



[@Massdisability](https://twitter.com/Massdisability)



[blog.mass.gov/mod](http://blog.mass.gov/mod)