

MASSACHUSETTS COMMERCIAL FISHING PORT PROFILES

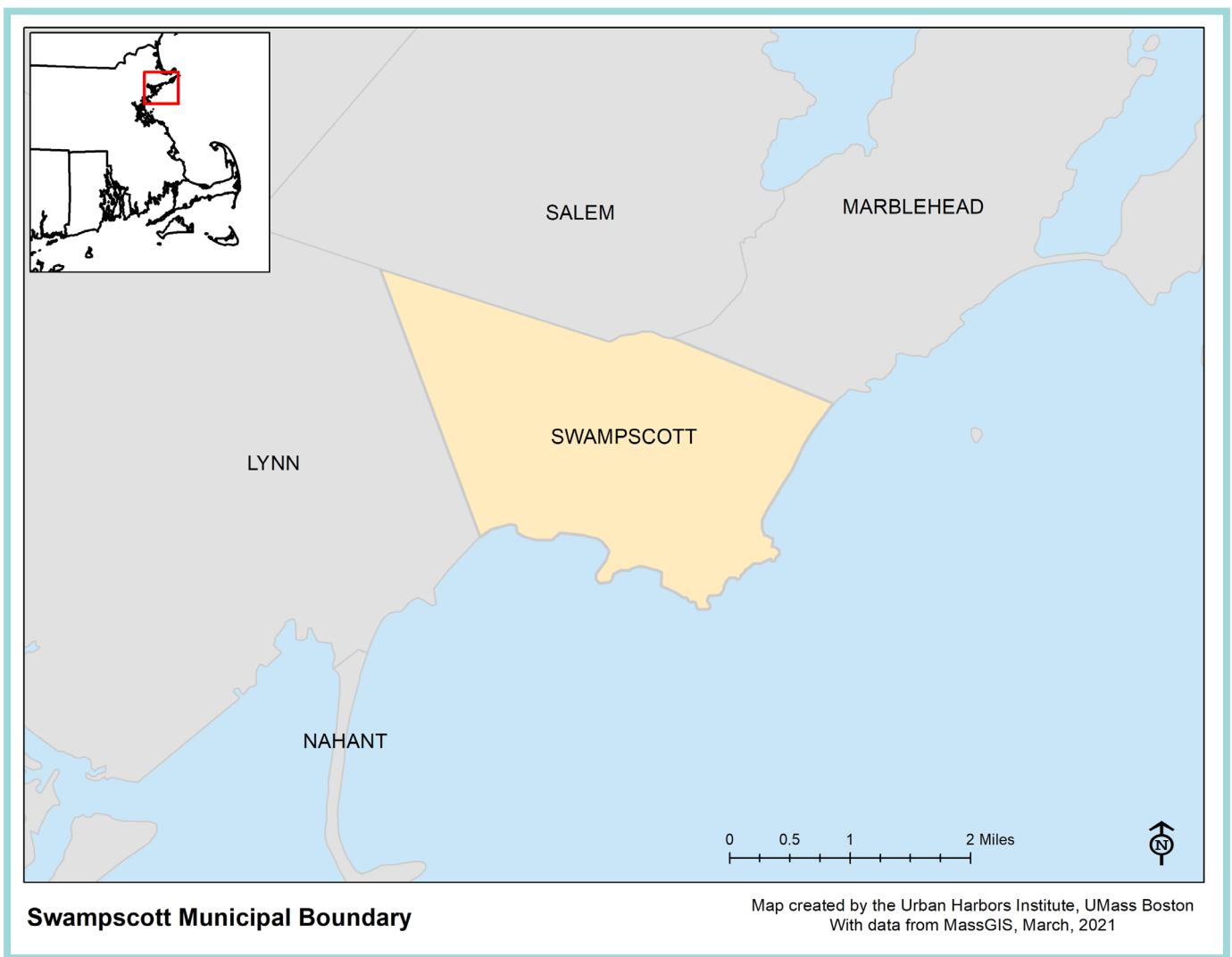
The **Massachusetts Commercial Fishing Port Profiles** were developed through a collaboration between the Massachusetts Division of Marine Fisheries, the University of Massachusetts Boston's Urban Harbors Institute, and the Cape Cod Commercial Fishermen's Alliance. Using data from commercial regional permits, the Atlantic Coastal Cooperative Statistics Program's (ACCSP) Standard Atlantic Fisheries Information System (SAFIS) Dealer Database, and harbormaster and fishermen surveys, these profiles provide an overview of the commercial fishing activity and infrastructure within each municipality. The Port Profiles are part of a larger report which describes the status of the Commonwealth's commercial fishing and port infrastructure, as well as how profile data can inform policy, programming, funding, infrastructure improvements, and other important industry-related decisions.

For the full report, visit the Massachusetts Division of Marine Fisheries website.



URBAN HARBORS INSTITUTE
UNIVERSITY OF MASSACHUSETTS BOSTON





Key Terms:

Permitted Harvesters: Commercially permitted harvesters residing in the municipality

Vessels: Commercially permitted vessels with the municipality listed as the homeport

Trips: Discrete commercial trips unloading fish or shellfish in this municipality

Active Permitted Harvesters: Commercially permitted harvesters with at least one reported transaction in a given year

Active Dealers: Permitted dealers with at least one reported purchase from a harvester in a given year

Ex-Vessel Value: Total amount (\$) paid directly to permitted harvesters by dealers at the first point of sale

SWAMPSCOTT

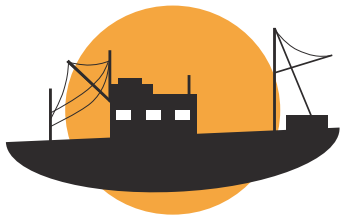
Located on the North Shore, Swampscott has one main harbor named Swampscott Harbor.

Permitted commercial fisheries, which may or may not be active during the survey period, include the Lobster Pot and Finfish fisheries.



2018 Overview

Source: DMF Permitting and Statistics Data; ACCSP Data Warehouse



Swampscott's commercial fishery had:

- 26 permitted harvesters with a Swampscott address
- 28 vessels with a Swampscott homeport
- 492 trips landing in Swampscott
- 9 active permitted harvesters landing in Swampscott
- 5 active dealers purchasing in Swampscott



Commercial harvesters landed the following in Swampscott in 2018:

148,486 pounds of catch with an ex-vessel value of **\$675,561***

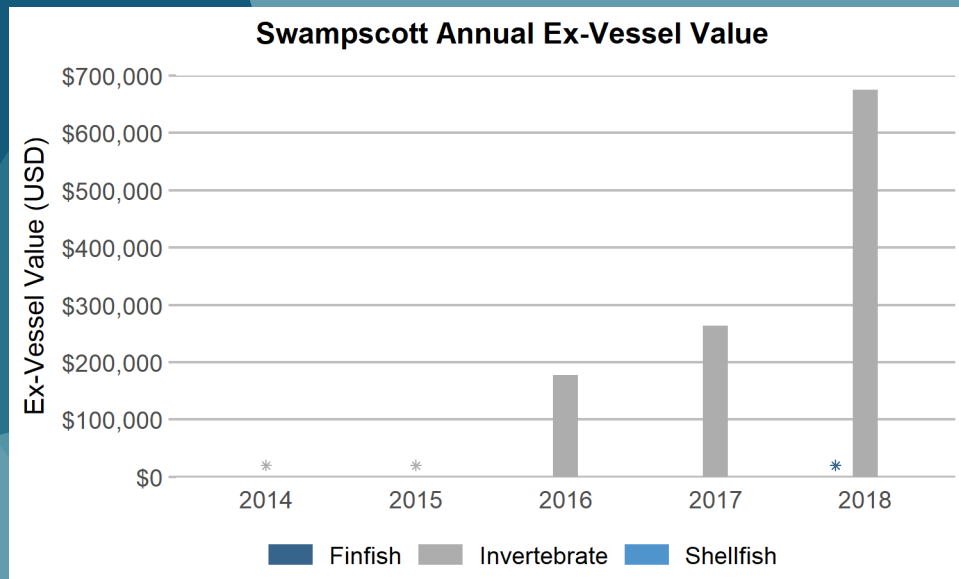
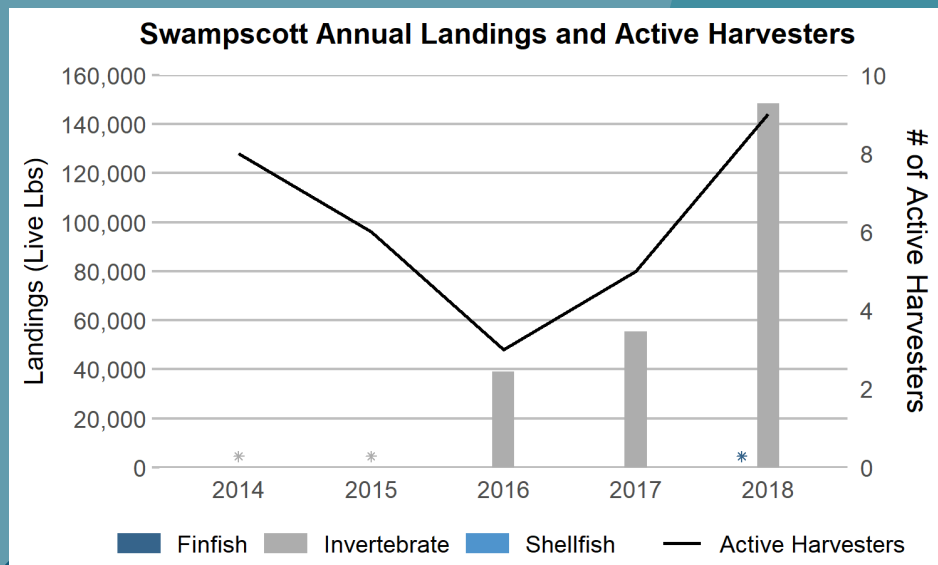
The top-ranked species, by dollar value, landed between 2014-2018 included:

- American Lobster
- Striped Bass
- Jonah Crab

*Does not include confidential finfish landings

5 Year Trends in Commercial Landings and Value

Source: DMF Permitting and Statistics Data; ACCSP Data Warehouse



* = CONFIDENTIAL, as fewer than three harvesters, vessels, and/or dealers reported in this municipality.

Status of the Commercial Fishing Industry

Source: 2019 Harbormaster and Harvester Survey Data

Anecdotal sources report that Swampscott has seen a decline in the amount of commercial lobster fishing in the last 10 years. Swampscott's commercial fishing fleet consists of primarily non-trailered vessels, and the number of these vessels has declined.



Commercial Fishing Infrastructure



Current infrastructure:

Challenges

- Lack of docking space
- Shallow water/need for dredging (the town currently funds to dredge the harbor, and is seeking to lengthen and widen pier)

Needs

- Dredging
- Breakwater or living reef
- Addition of finger slips
- Addition of a fuel dock
- New pier
- Bait and gear storage



Infrastructure dedicated solely to commercial fishermen:

- Moorings: Commercial fishing vessels are moored in the southeast of the harbor
- Slips: None
- Broadside berthing: None



In 2018, the municipality charged for the following services:

- Moorings: \$12

| Type of Infrastructure | Available? |
|----------------------------|------------|
| Ice | |
| Bait storage | |
| Trash disposal | |
| Commerical offloading | |
| Hoist | |
| Dock space | |
| Gear storage | |
| Mooring space | |
| Fueling stations | |
| Vessel repair | |
| Launch ramp | |
| Parking for fishermen | |
| Parking for seafood trucks | |
| Other | |

= Available