

MASSACHUSETTS COMMERCIAL FISHING PORT PROFILES

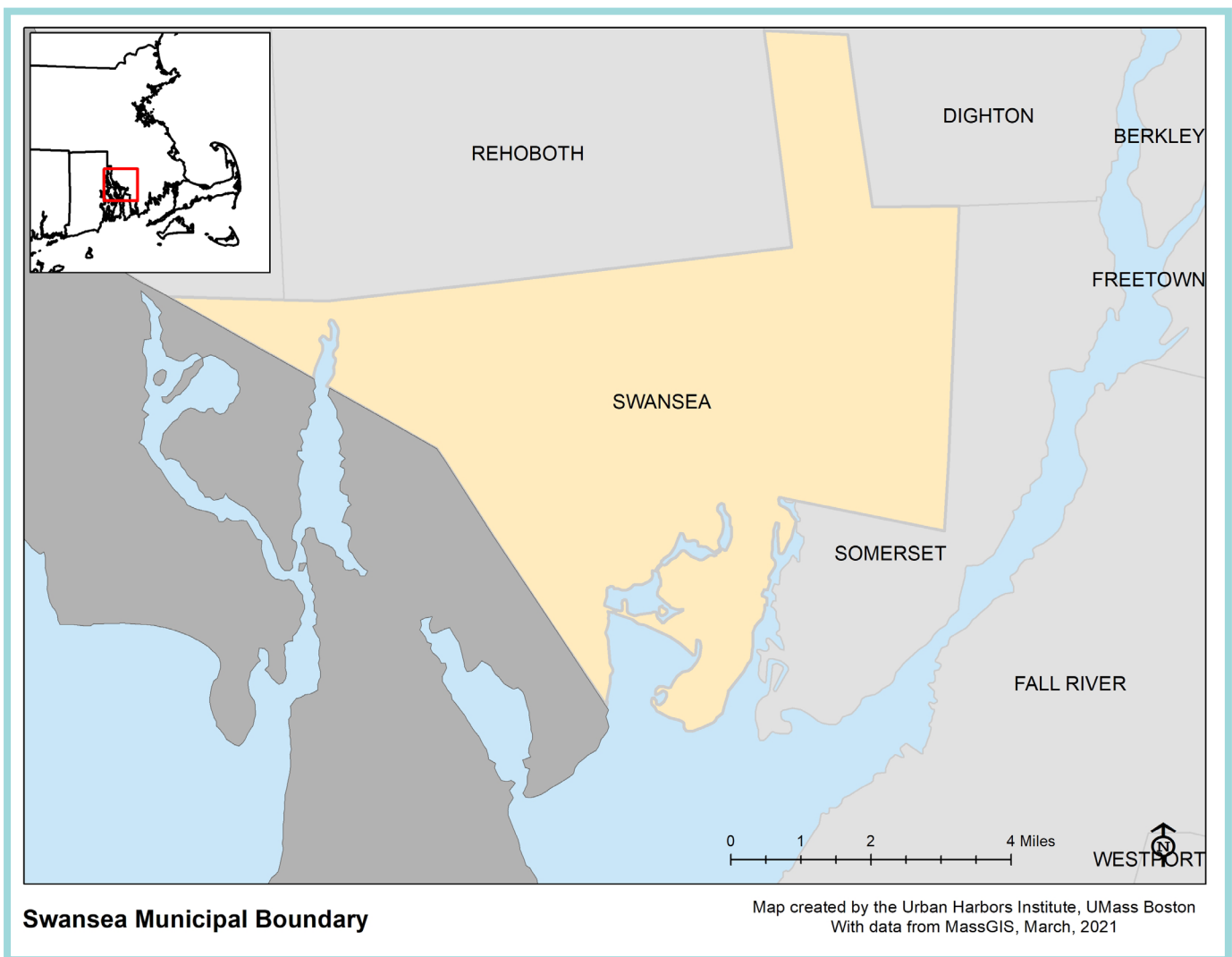
The **Massachusetts Commercial Fishing Port Profiles** were developed through a collaboration between the Massachusetts Division of Marine Fisheries, the University of Massachusetts Boston's Urban Harbors Institute, and the Cape Cod Commercial Fishermen's Alliance. Using data from commercial regional permits, the Atlantic Coastal Cooperative Statistics Program's (ACCSP) Standard Atlantic Fisheries Information System (SAFIS) Dealer Database, and harbormaster and fishermen surveys, these profiles provide an overview of the commercial fishing activity and infrastructure within each municipality. The Port Profiles are part of a larger report which describes the status of the Commonwealth's commercial fishing and port infrastructure, as well as how profile data can inform policy, programming, funding, infrastructure improvements, and other important industry-related decisions.

For the full report, visit the Massachusetts Division of Marine Fisheries website.



URBAN HARBORS INSTITUTE
UNIVERSITY OF MASSACHUSETTS BOSTON





Key Terms:

Permitted Harvesters: Commercially permitted harvesters residing in the municipality

Vessels: Commercially permitted vessels with the municipality listed as the homeport

Trips: Discrete commercial trips unloading fish or shellfish in this municipality

Active Permitted Harvesters: Commercially permitted harvesters with at least one reported transaction in a given year

Active Dealers: Permitted dealers with at least one reported purchase from a harvester in a given year

Ex-Vessel Value: Total amount (\$) paid directly to permitted harvesters by dealers at the first point of sale

SWANSEA

Located on the South Coast, Swansea has one main harbor named Cole River.

Permitted commercial fisheries, which may or may not be active during the survey period, include:

- Shellfish (by hand)
- Rod & Reel



Photo Source: Herald News

2018 Overview

Source: DMF Permitting and Statistics Data; ACCSP Data Warehouse



Swansea's commercial fishery had:

- 42 permitted harvesters with a Swansea address
- 11 vessels with a Swansea homeport
- 6 trips landing in Swansea
- 2 active permitted harvesters landing in Swansea
- 2 active dealers purchasing in Swansea



Commercial harvesters landed the following in Swansea in 2018:

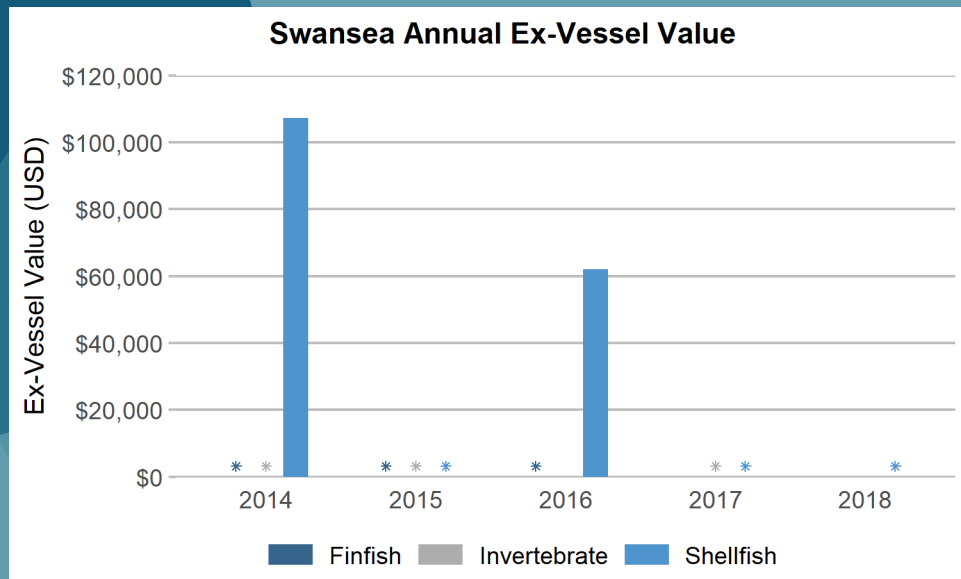
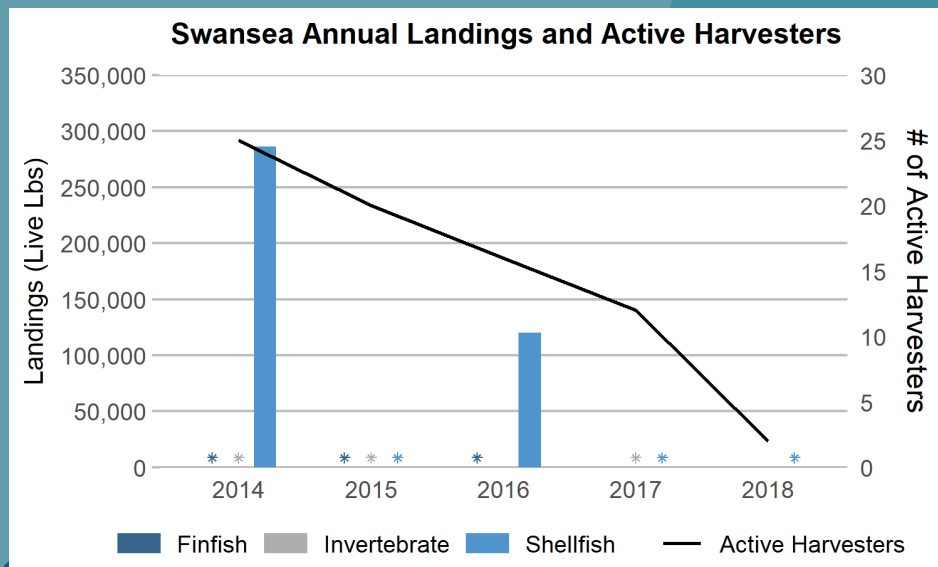
An ex-vessel value of **less than \$50,000**

The top-ranked species, by dollar value, landed between 2014-2018 included:

- Northern Quahog
- Striped Bass
- Conchs

5 Year Trends in Commercial Landings and Value

Source: DMF Permitting and Statistics Data; ACCSP Data Warehouse



* = CONFIDENTIAL, as fewer than three harvesters, vessels, and/or dealers reported in this municipality.

Status of the Commercial Fishing Industry

Source: 2019 Harbormaster and Harvester Survey Data

Swansea's commercial fishing fleet consists solely of trailered vessels for shellfishermen. In the last 10 years, the number of commercial fishing vessels has declined due to a lack of interest in the fishery.



Photo Source:
Town of Swansea

Commercial Fishing Infrastructure



Infrastructure upgrades in last ten years:

- New bridge



Current infrastructure:

Challenges

- Lack of docking space




Needs

- None identified as the harbor only has commercial shellfishermen who trailer their boats



Infrastructure dedicated solely to commercial fishermen:

- Moorings: None
- Slips: None
- Broadside berthing: None

Type of Infrastructure	Available?
Ice	
Bait storage	
Trash disposal	
Commerical offloading	
Hoist	
Dock space	
Gear storage	
Mooring space	
Fueling stations	
Vessel repair	
Launch ramp	
Parking for fishermen	
Parking for seafood trucks	
Other	

 = Available