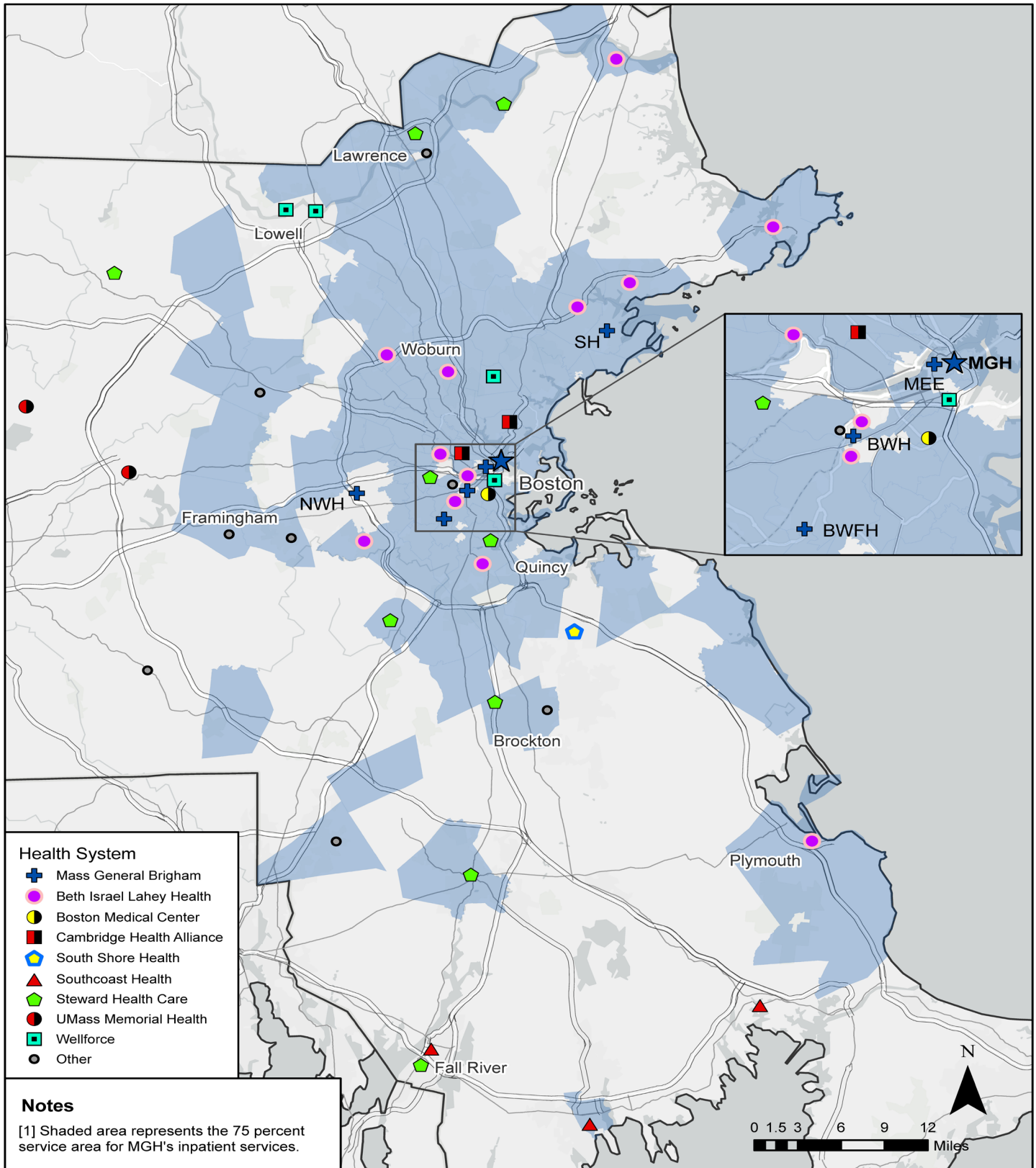


Figure MGH1
MGH Patient Profile
Inpatients

	MGH Inpatients	%	MGH Inpatients in MGH 75 Percent Service Area	%	All Inpatients in MGH 75 Percent Service Area	%
Patient Demographics						
Gender						
Female/Other/Unknown	16,231	47%	12,312	47%	128,688	52%
Male	18,377	53%	13,719	53%	118,804	48%
Race						
White	27,704	80%	20,308	78%	190,559	77%
Black	2,205	6%	1,896	7%	28,968	12%
Asian/Pacific Islander	1,265	4%	1,035	4%	7,059	3%
American Indian/Alaska Native	48	0%	34	0%	350	0%
Other/Unknown	3,386	10%	2,758	11%	20,556	8%
Ethnicity						
Hispanic	2,524	7%	2,224	9%	19,946	8%
Not Hispanic	32,084	93%	23,807	91%	227,530	92%
Unknown					16	0%
Age						
18-39/Unknown	4,448	13%	3,246	12%	24,297	10%
40-49	3,052	9%	2,212	8%	19,549	8%
50-64	9,375	27%	6,823	26%	63,830	26%
65-74	8,402	24%	6,195	24%	54,109	22%
75-84	6,107	18%	4,755	18%	48,687	20%
85+	3,224	9%	2,800	11%	37,020	15%
Patient Insurance Type						
Commercial	11,373	33%	8,004	31%	57,181	23%
Original Medicare	15,427	45%	11,790	45%	114,901	46%
Medicare Health Plans	2,415	7%	1,940	7%	32,923	13%
MassHealth Non-Managed Care	685	2%	569	2%	10,939	4%
MassHealth Managed Care	2,660	8%	2,082	8%	18,272	7%
Other/Unknown	2,048	6%	1,646	6%	13,276	5%
Acuity Level (CMI)						
	2.12		2.04		1.68	
Total with Exclusions	34,608		26,031		247,492	
Total No Exclusions	54,377					

Figure MGH2
MGH Inpatient 75 Percent Service Area and Other General Acute Care Hospitals



Description:

Map of MGH's 75 percent service area for inpatient services. The map includes active general acute care hospitals in Eastern Massachusetts. MGB's general acute care hospitals are separately labeled on the map: BWFH = Brigham and Women's Faulkner Hospital, BWH = Brigham and Women's Hospital, MEE = Mass Eye and Ear, NWH = Newton-Wellesley Hospital, SH = Salem Hospital (formerly North Shore Medical Center).

Figure MGH3
MGH Historical Inpatient General Acute Care Discharges and Patient Days (2015-2019)

	2015	2016	2017	2018	2019	Percent Growth (2019 vs. 2015)
Discharges	34,356	33,245	33,392	33,421	34,295	0%
Cancer Services	6,982	7,159	6,915	6,876	6,715	-4%
Heart & Vascular Services	6,234	6,225	6,627	6,562	6,782	9%
Other Services	21,140	19,861	19,850	19,983	20,798	-2%
Patient Days	207,047	204,592	206,607	209,438	217,164	5%
Cancer Services	40,288	40,937	39,831	41,641	39,632	-2%
Heart & Vascular Services	41,647	42,318	46,677	46,445	48,777	17%
Other Services	125,112	121,337	120,099	121,352	128,755	3%

Figure MGH4

Historical Inpatient General Acute Care Discharges and Patient Days (2015-2019)

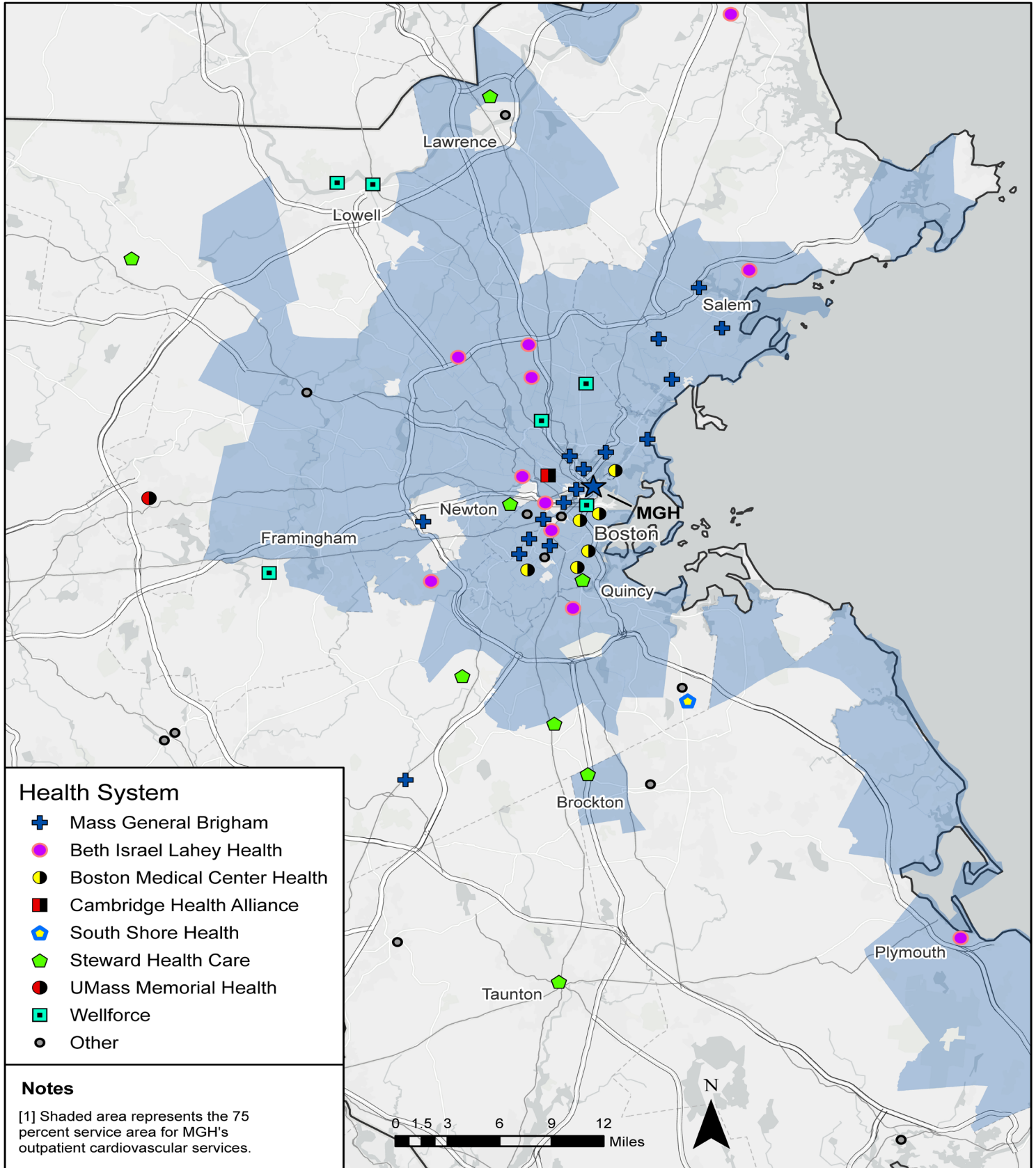
Discharges for Patients in MGH's 75 Percent Service Area

	2015	2016	2017	2018	2019	Percent Growth (2019 vs. 2015)
Discharges	234,995	235,970	239,294	242,827	245,118	4%
Cancer Services	26,241	26,600	25,788	25,820	25,632	-2%
Heart & Vascular Services	40,920	40,605	42,697	43,422	44,281	8%
Other Services	167,834	168,765	170,809	173,585	175,205	4%
Patient Days	1,111,144	1,103,595	1,129,210	1,164,227	1,196,903	8%
Cancer Services	132,697	134,784	130,029	133,851	135,196	2%
Heart & Vascular Services	198,428	199,243	211,173	221,776	231,379	17%
Other Services	780,019	769,568	788,008	808,600	830,328	6%

Figure MGH5
MGH Patient Profile
Outpatient Cardiovascular Patients

	MGH Outpatients	%	MGH Outpatients in MGH 75 Percent Service Area	%	All Outpatients in MGH 75 Percent Service Area	%
Patient Demographics						
Gender						
Female/Other/Unknown	32,965	53%	24,634	54%	253,019	57%
Male	29,286	47%	21,325	46%	190,832	43%
Race/Ethnicity (Original Medicare Only)						
White	29,704	86%	20,773	85%	161,341	82%
Black	1,633	5%	1,349	6%	15,751	8%
Asian/Pacific Islander/ American Indian/Alaska Native	595	2%	483	2%	3,628	2%
Hispanic	613	2%	507	2%	4,761	2%
Other/Unknown	1,932	6%	1,386	6%	10,771	5%
Age						
≤19/Unknown	1,990	3%	1,528	3%	20,438	5%
20-39	6,362	10%	4,908	11%	59,099	13%
40-49	4,564	7%	3,434	7%	37,964	9%
50-64	13,059	21%	9,609	21%	96,917	22%
65-74	19,733	32%	13,874	30%	115,580	26%
75-84	12,477	20%	9,263	20%	76,975	17%
85+	4,066	7%	3,343	7%	36,878	8%
Patient Insurance Type						
Commercial	17,023	27%	12,651	27%	121,706	27%
Original Medicare	34,477	55%	24,498	53%	196,252	44%
Medicare Health Plans	4,194	7%	3,334	7%	41,324	9%
MassHealth Non-Managed Care	1,372	2%	1,199	3%	12,973	3%
MassHealth Managed Care	3,570	6%	2,917	6%	50,619	11%
Other/Unknown	1,673	3%	1,407	3%	21,561	5%

Figure MGH6
MGH Outpatient Cardiovascular 75 Percent Area and
Other Outpatient Cardiovascular Providers



Description:

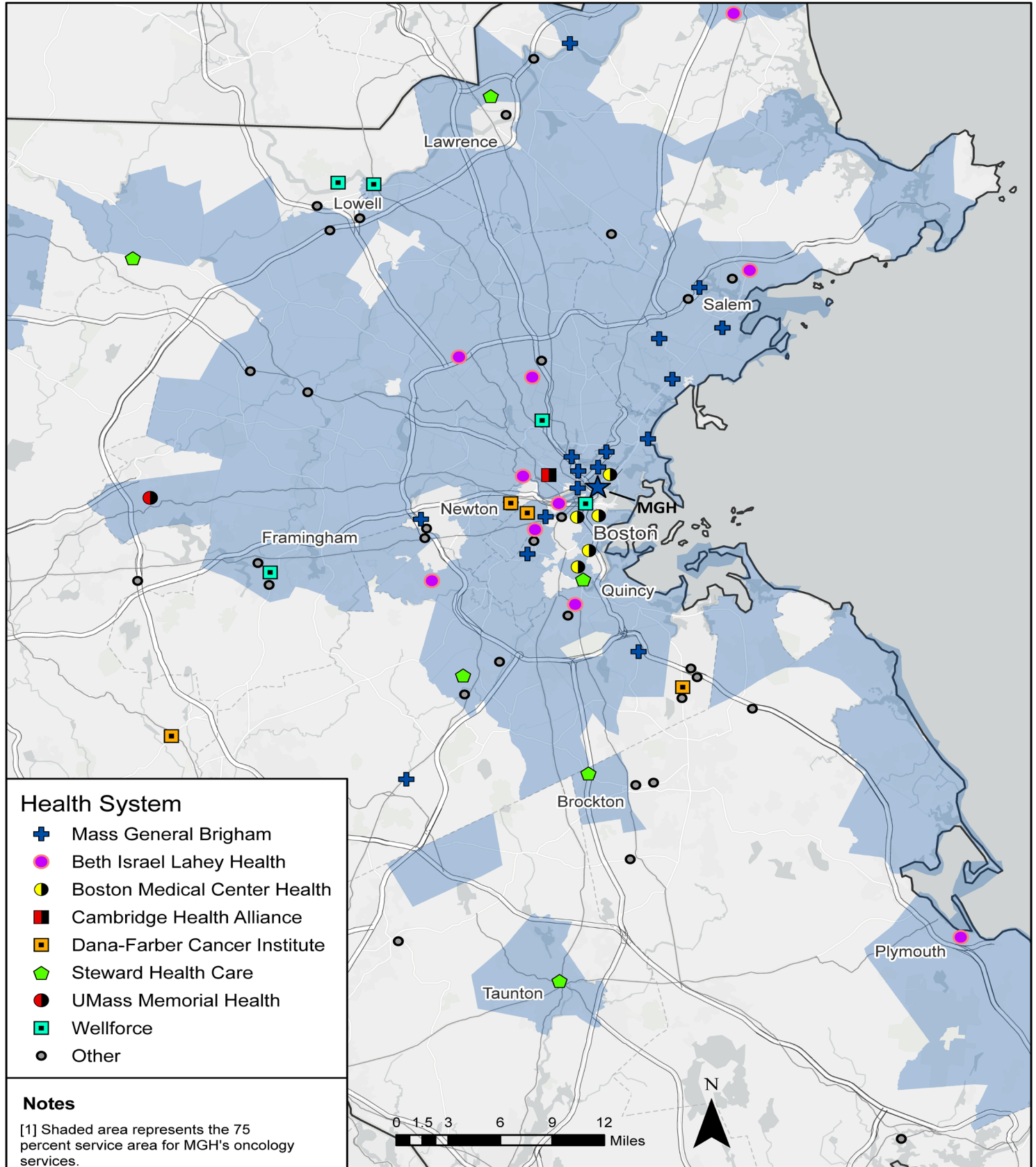
Map of MGH's 75 percent service area for outpatient cardiovascular services. The map includes markers for facilities that provided at least 300 outpatient cardiovascular visits in the processed 2018 APCD and Medicare Claims data.

Figure MGH7
MGH Patient Profile
Outpatient Oncology Patients

	MGH Outpatients	%	MGH Outpatients in MGH 75 Percent Service Area	%	All Outpatients in MGH 75 Percent Service Area	%
Patient Demographics						
Gender						
Female/Other/Unknown	27,713	58%	20,893	58%	172,629	62%
Male	20,413	42%	14,952	42%	107,111	38%
Race/Ethnicity (Original Medicare Only)						
White	19,357	89%	13,847	89%	88,580	88%
Black	689	3%	474	3%	4,412	4%
Asian/Pacific Islander/ American Indian/Alaska Native	296	1%	236	2%	1,384	1%
Hispanic	252	1%	200	1%	1,530	2%
Other/Unknown	1,132	5%	773	5%	5,062	5%
Age						
≤19/Unknown	695	1%	523	1%	6,462	2%
20-39	4,251	9%	3,353	9%	29,243	10%
40-49	4,286	9%	3,264	9%	28,021	10%
50-64	13,147	27%	9,843	27%	82,803	30%
65-74	14,734	31%	10,546	29%	74,736	27%
75-84	8,724	18%	6,475	18%	43,806	16%
85+	2,289	5%	1,841	5%	14,669	5%
Patient Insurance Type						
Commercial	17,199	36%	13,024	36%	103,313	37%
Original Medicare	21,726	45%	15,530	43%	100,968	36%
Medicare Health Plans	3,806	8%	2,913	8%	28,245	10%
MassHealth Non-Managed Care	714	1%	569	2%	4,803	2%
MassHealth Managed Care	3,515	7%	2,822	8%	30,436	11%
Other/Unknown	1,269	3%	1,068	3%	12,584	4%

Figure MGH8

MGH Outpatient Oncology 75 Percent Service Area and Other Oncology Providers



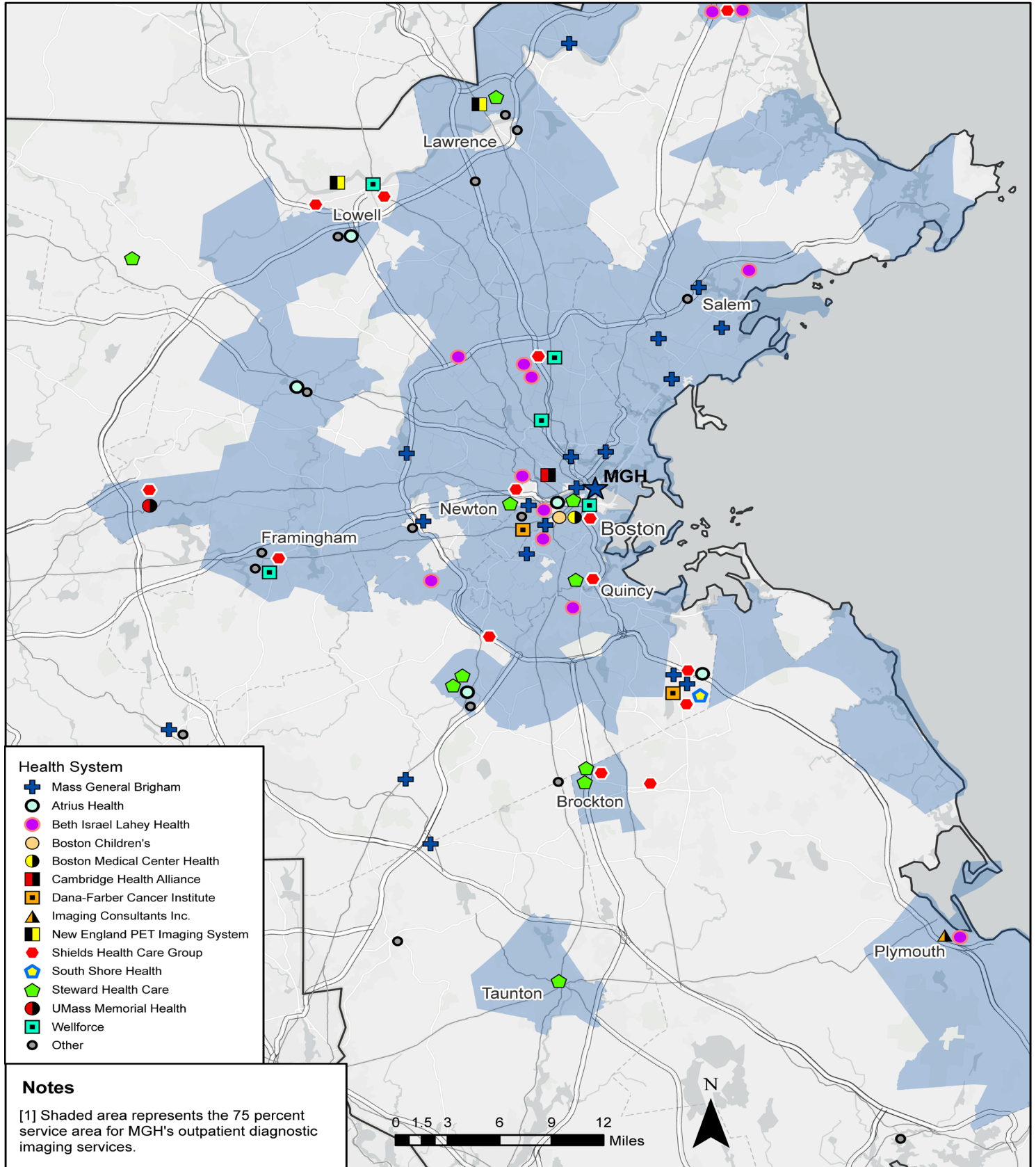
Description:

Map of MGH's 75 percent service area for outpatient oncology services. The map includes markers for facilities that provided at least 300 outpatient oncology visits in the processed 2018 APCD and Medicare Claims data.

Figure MGH9
MGH Patient Profile
Outpatient Imaging Patients

	MGH Outpatients	%	MGH Outpatients in MGH 75 Percent Service Area	%	All Outpatients in MGH 75 Percent Service Area	%
Patient Demographics						
Gender						
Female/Other/Unknown	22,766	56%	17,478	57%	191,335	58%
Male	18,025	44%	13,365	43%	138,641	42%
Race/Ethnicity (Original Medicare Only)						
White	12,035	86%	8,455	85%	95,906	85%
Black	672	5%	562	6%	7,501	7%
Asian/Pacific Islander/ American Indian/Alaska Native	226	2%	182	2%	1,556	1%
Hispanic	291	2%	253	3%	2,888	3%
Other/Unknown	732	5%	542	5%	5,491	5%
Age						
≤19/Unknown	1,582	4%	1,157	4%	14,139	4%
20-39	6,089	15%	4,894	16%	52,614	16%
40-49	4,645	11%	3,571	12%	36,487	11%
50-64	11,650	29%	8,833	29%	86,398	26%
65-74	9,390	23%	6,693	22%	72,308	22%
75-84	5,660	14%	4,203	14%	46,666	14%
85+	1,775	4%	1,492	5%	21,364	6%
Patient Insurance Type						
Commercial	15,362	38%	11,302	37%	107,208	32%
Original Medicare	13,956	34%	9,994	32%	113,342	34%
Medicare Health Plans	3,032	7%	2,331	8%	29,936	9%
MassHealth Non-Managed Care	1,568	4%	1,386	4%	12,564	4%
MassHealth Managed Care	5,444	13%	4,593	15%	51,780	16%
Other/Unknown	1,486	4%	1,281	4%	15,743	5%

Figure MGH10
MGH Outpatient Imaging 75 Percent Service Area and
Other Outpatient Diagnostic Imaging Providers



Description:

Map of MGH's 75 percent service area for outpatient imaging services. The map includes markers for facilities that provided at least 300 outpatient diagnostic imaging visits in the processed 2018 APCD and Medicare Claims data.

Figure MGH11
Demographics in MGH's Inpatient 75 Percent Service Area (2020, 2025, and 2030)

Patient Demographics	2020 (Estimated)	%	2025 (Estimated)	%	2030 (Estimated)	%	Percent Growth (2025 vs. 2020)	Percent Growth (2030 vs. 2020)
Gender								
Female	1,727,305	52%	1,783,470	52%	1,832,137	52%	3%	6%
Male	1,610,991	48%	1,663,654	48%	1,708,207	48%	3%	6%
Age								
≤19	727,972	22%	738,088	21%	738,619	21%	1%	1%
20-39	991,460	30%	974,615	28%	968,033	27%	-2%	-2%
40-49	421,313	13%	464,271	13%	501,104	14%	10%	19%
50-64	648,024	19%	633,728	18%	620,564	18%	-2%	-4%
65-74	310,866	9%	349,584	10%	373,995	11%	12%	20%
75-84	158,083	5%	202,219	6%	241,353	7%	28%	53%
85+	80,580	2%	84,620	2%	96,677	3%	5%	20%
Age 20 and Older	2,610,324	78%	2,709,036	79%	2,801,726	79%	4%	7%
Age 20-64	2,060,796	62%	2,072,613	60%	2,089,701	59%	1%	1%
Age 65 and Older	549,528	16%	636,423	18%	712,025	20%	16%	30%
Total Population	3,338,296	100%	3,447,124	100%	3,540,344	100%	3%	6%

Figure MGH12

MGH Inpatient General Acute Care Discharges and Patient Days (2019 and Projections for 2025 and 2030)

	2019	2025	2030	Percent Growth (2025 vs. 2019)	Percent Growth (2030 vs. 2019)
Discharges	34,295	37,338	40,086	9%	17%
Cancer Services	6,715	7,245	7,650	8%	14%
Heart & Vascular Services	6,782	7,536	8,269	11%	22%
Other Services	20,798	22,556	24,166	8%	16%
Patient Days	217,164	237,168	254,425	9%	17%
Cancer Services	39,632	43,120	45,751	9%	15%
Heart & Vascular Services	48,777	54,172	59,237	11%	21%
Other Services	128,755	139,876	149,437	9%	16%

Figure MGH13
Demographics in MGH's Outpatient 75 Percent Service Area (2020, 2025, and 2030)
Cardiovascular Procedures, Oncology Visits, and Imaging Procedures

Patient Demographics	2020 (Estimated)	%	2025 (Estimated)	%	2030 (Estimated)	%	Percent Growth (2025 vs. 2020)	Percent Growth (2030 vs. 2020)
Gender								
Female	1,628,067	52%	1,683,056	52%	1,730,488	52%	3%	6%
Male	1,512,331	48%	1,562,796	48%	1,606,119	48%	3%	6%
Age								
≤19	676,314	22%	685,744	21%	686,459	21%	1%	2%
20-39	928,522	30%	914,087	28%	909,043	27%	-2%	-2%
40-49	396,237	13%	438,207	14%	474,616	14%	11%	20%
50-64	610,303	19%	597,073	18%	584,708	18%	-2%	-4%
65-74	296,053	9%	330,705	10%	352,582	11%	12%	19%
75-84	153,465	5%	195,953	6%	232,696	7%	28%	52%
85+	79,504	3%	84,082	3%	96,502	3%	6%	21%
Age 20 and Older	2,464,084	78%	2,560,107	79%	2,650,147	79%	4%	8%
Age 20-64	1,935,063	62%	1,949,367	60%	1,968,367	59%	1%	2%
Age 65 and Older	529,022	17%	610,740	19%	681,780	20%	15%	29%
Total Population	3,140,398	100%	3,245,852	100%	3,336,606	100%	3%	6%

Figure MGH14
MGH Outpatient Volume by Type of Service (2018 and Projections for 2025 and 2030)

	2018	2025	2030	Percent Growth (2025 vs. 2018)	Percent Growth (2030 vs. 2018)
CT Scans	48,040	52,247	55,708	9%	16%
MR Scans	26,119	27,579	28,644	6%	10%
PET/CT Scans	1,774	1,947	2,078	10%	17%
Cardiovascular Procedures	156,667	174,714	189,968	12%	21%
Oncology Visits	190,521	210,074	224,753	10%	18%

Figure MGH15
MGH ZIP Code Inpatient Shares (Weighted by MGH Discharges)
2019 Massachusetts Inpatient General Acute Care Discharges

System/Hospital	Overall	Cancer Services	Heart & Vascular Services	Other Services
Mass General Brigham	34%	45%	35%	32%
Massachusetts General Hospital	19%	25%	21%	17%
Brigham and Women's Hospital	6%	13%	6%	5%
Salem Hospital	4%	3%	4%	4%
Newton-Wellesley Hospital	3%	2%	2%	3%
Other Hospitals	3%	3%	2%	3%
Beth Israel Lahey Health	25%	23%	24%	26%
Beth Israel Deaconess Medical Center - East Campus	7%	11%	8%	6%
Lahey Hospital & Medical Center, Burlington	5%	4%	5%	5%
Mount Auburn Hospital	3%	2%	3%	3%
Winchester Hospital	3%	1%	2%	3%
Lahey Health - Beverly Hospital	3%	1%	2%	3%
New England Baptist Hospital	2%	1%	0%	2%
Other Hospitals	4%	2%	3%	4%
Boston Medical Center	5%	5%	5%	5%
Cambridge Health Alliance	4%	2%	3%	4%
Cambridge Health Alliance - Everett Hospital Campus	2%	1%	2%	3%
Other Hospitals	2%	1%	1%	2%
Cape Cod Healthcare	2%	1%	2%	2%
South Shore Health	3%	2%	3%	3%
Southcoast Health	2%	2%	2%	2%
Steward Health Care	7%	4%	7%	7%
Steward St. Elizabeth's Medical Center	2%	2%	2%	1%
Other Hospitals	5%	3%	5%	6%
Umass Memorial Health	2%	2%	2%	2%
Wellforce	8%	7%	9%	8%
Melrosewakefield Hospital Campus - Melrosewakefield Healthcare	3%	2%	3%	4%
Tufts Medical Center	3%	4%	4%	3%
Other Hospitals	2%	1%	2%	2%
Other Systems	8%	7%	8%	8%
Total	100%	100%	100%	100%

Figure MGH16
Predicted Changes in Concentration After the MGH Expansion
MGH ZIP Code Inpatient Shares (Weighted by MGH Discharges)

Hospital	System	Share Before Proposed Project	Share After Proposed Project	Change in Shares
Massachusetts General Hospital	Mass General Brigham	18.9%	20.2%	1.30%
Beth Israel Deaconess Medical Center - East Campus	Beth Israel Lahey Health	6.8%	6.6%	-0.21%
Brigham and Women's Hospital	Mass General Brigham	5.7%	5.6%	-0.13%
Boston Medical Center - Menino Pavilion Campus	Boston Medical Center	5.1%	4.9%	-0.20%
Lahey Hospital & Medical Center, Burlington	Beth Israel Lahey Health	4.6%	4.5%	-0.08%
Salem Hospital	Mass General Brigham	4.2%	4.2%	-0.05%
Melrosewakefield Hospital Campus - Melrosewakefield Healthcare	Wellforce	3.4%	3.3%	-0.08%
Tufts Medical Center	Wellforce	3.2%	3.1%	-0.11%
Mount Auburn Hospital	Beth Israel Lahey Health	3.1%	3.0%	-0.07%
South Shore Hospital	South Shore Health	2.9%	2.9%	-0.01%
Winchester Hospital	Beth Israel Lahey Health	2.7%	2.6%	-0.03%
Newton-Wellesley Hospital	Mass General Brigham	2.6%	2.6%	-0.02%
Lahey Health - Beverly Hospital	Beth Israel Lahey Health	2.6%	2.6%	-0.02%
All Other Hospitals		34.2%	33.9%	-0.29%
Total		100%	100%	
		HHI Before Proposed Project	HHI After Proposed Project	Change in HHI
		4,212	4,271	59

Figure MGH17

Predicted Changes in Concentration After the MGH Expansion

MGH ZIP Code Outpatient Shares (Weighted by MGH Volume)

CT Scans

Provider	Share Before Proposed Project	Share After Proposed Project	Change in Share
Mass General Hospital	15.7%	17.9%	2.2%
Other Mass General Brigham Facilities	19.5%	18.9%	-0.6%
Beth Israel Lahey Health	21.0%	20.5%	-0.5%
Wellforce	8.7%	8.5%	-0.3%
Steward Health Care	6.4%	6.3%	-0.1%
Boston Medical Center Health	5.1%	4.9%	-0.2%
Cambridge Health Alliance	4.9%	4.6%	-0.2%
Dana-Farber Cancer Institute	3.2%	3.1%	-0.1%
South Shore Health	2.5%	2.5%	0.0%
UMass Memorial Health	2.3%	2.3%	0.0%
Atrius Health	2.2%	2.1%	-0.1%
All Other Providers	8.6%	8.4%	-0.1%
Total	100%	100%	
	HHI Before Proposed Project	HHI After Proposed Project	Change in HHI
	3,547	3,647	100

Figure MGH18

Predicted Changes in Concentration After the MGH Expansion

MGH ZIP Code Outpatient Shares (Weighted by MGH Volume)

MR Scans

Provider	Share Before Proposed Project	Share After Proposed Project	Change in Share
Mass General Hospital	14.0%	16.8%	2.8%
Other Mass General Brigham Facilities	19.2%	18.5%	-0.7%
Beth Israel Lahey Health	17.3%	16.7%	-0.6%
Shields Health Care Group	12.4%	12.1%	-0.2%
Boston Medical Center Health	4.8%	4.5%	-0.3%
Wellforce	4.7%	4.5%	-0.2%
Atrius Health	4.5%	4.3%	-0.2%
Steward Health Care	4.1%	4.0%	-0.1%
Boston Children's	3.1%	2.9%	-0.1%
Cambridge Health Alliance	2.7%	2.5%	-0.2%
All Other Providers	13.4%	13.1%	-0.3%
Total	100%	100%	

	HHI Before Proposed Project	HHI After Proposed Project	Change in HHI
	2,641	2,772	131

Figure MGH19
Predicted Changes in Concentration After the MGH Expansion
MGH ZIP Code Outpatient Shares (Weighted by MGH Volume)
PET/CT Scans

Provider	Share Before Proposed Project	Share After Proposed Project	Change in Share
Mass General Hospital	16.4%	24.6%	8.1%
Other Mass General Brigham Facilities	16.3%	14.3%	-2.0%
Beth Israel Lahey Health	23.8%	21.2%	-2.7%
Shields Health Care Group	12.9%	12.0%	-0.9%
Dana-Farber Cancer Institute	12.5%	11.3%	-1.2%
New England PET Imaging System	3.5%	3.3%	-0.2%
Boston Medical Center Health	3.1%	2.6%	-0.5%
Imaging Consultants Inc.	2.5%	2.4%	-0.1%
Steward Health Care	2.3%	2.1%	-0.2%
All Other Providers	6.6%	6.0%	-0.6%
Total	100%	100%	

	HHI Before Proposed Project	HHI After Proposed Project	Change in HHI
	3,758	4,018	260

Figure MGH20

Predicted Changes in Concentration After the MGH Expansion

MGH ZIP Code Outpatient Shares (Weighted by MGH Volume)

Cardiovascular Procedures

Provider	Share Before Proposed Project	Share After Proposed Project	Change in Share
Mass General Hospital	13.8%	14.2%	0.4%
Other Mass General Brigham Facilities	18.3%	18.2%	-0.1%
Beth Israel Lahey Health	28.0%	27.9%	-0.1%
Wellforce	11.6%	11.6%	-0.1%
Boston Medical Center Health	5.5%	5.5%	0.0%
Steward Health Care	4.5%	4.5%	0.0%
Cambridge Health Alliance	4.4%	4.4%	0.0%
UMass Memorial Health	2.3%	2.3%	0.0%
South Shore Health	2.2%	2.2%	0.0%
All Other Providers	9.3%	9.3%	0.0%
Total	100%	100%	

	HHI Before Proposed Project	HHI After Proposed Project	Change in HHI
	3,782	3,792	10

Figure MGH21

Predicted Changes in Concentration After the MGH Expansion
MGH ZIP Code Outpatient Shares (Weighted by MGH Volume)
Oncology Visits

Provider	Share Before Proposed Project	Share After Proposed Project	Change in Share
Mass General Hospital	18.2%	21.4%	3.2%
Other Mass General Brigham Facilities	16.4%	15.6%	-0.9%
Beth Israel Lahey Health	24.1%	23.2%	-0.9%
Dana-Farber Cancer Institute	12.0%	11.5%	-0.5%
Wellforce	7.7%	7.4%	-0.3%
Boston Medical Center Health	5.0%	4.8%	-0.2%
Steward Health Care	2.7%	2.7%	-0.1%
Cambridge Health Alliance	2.2%	2.2%	-0.1%
UMass Memorial Health	2.0%	2.0%	0.0%
All Other Providers	9.5%	9.3%	-0.2%
Total	100%	100%	

	HHI Before Proposed Project	HHI After Proposed Project	Change in HHI
	3,126	3,239	113

Figure MGH22
Predicted Changes in Inpatient Spending After the MGH Inpatient Bed Expansion

Insurance Category	Overall Services		Cancer Services		Heart & Vascular Services	
	Expected Change in Costs per Switch to MGH	Expected Change in Costs per Switch Across All the Payor's Enrollees	Expected Change in Costs per Switch to MGH	Expected Change in Costs per Switch Across All the Payor's Enrollees	Expected Change in Costs per Switch to MGH	Expected Change in Costs per Switch Across All the Payor's Enrollees
Commercial	33.8%	0.16%	72.7%	2.03%	62.5%	1.27%
Medicare Health Plans	45.2%	0.20%	121.2%	2.63%	52.5%	0.83%
MassHealth Managed Care	39.1%	0.07%	82.7%	2.07%	58.5%	0.72%
MassHealth Non-Managed	1.7%	0.00%	5.0%	0.15%	2.2%	0.04%
Original Medicare	7.1%	0.03%	21.4%	0.53%	9.5%	0.16%
Overall	14.4%	0.06%	37.8%	1.01%	19.4%	0.35%

Figure MGH23
Predicted Changes in Outpatient Spending After the MGH Expansion
CT Scans

	Volume Switching to MGH	Change in Spending per Switch	Change in Spending Overall
Commercial	25.4%	24.4%	0.3%
Original Medicare	41.2%	5.5%	0.0%
Medicare Health Plans	8.7%	-5.2%	0.0%
MassHealth Non-Managed Care	5.4%	0.0%	0.0%
MassHealth Managed Care	13.5%	0.3%	0.0%
Other	5.7%	-14.6%	-0.1%
Overall	100%	7.2%	0.1%

Figure MGH24
Predicted Changes in Outpatient Spending After the MGH Expansion
MR Scans

	Volume Switching to MGH	Change in Spending per Switch	Change in Spending Overall
Commercial	41.0%	23.7%	0.4%
Original Medicare	28.0%	18.6%	0.2%
Medicare Health Plans	7.4%	0.5%	0.0%
MassHealth Non-Managed Care	3.5%	0.7%	0.0%
MassHealth Managed Care	15.9%	2.1%	0.0%
Other	4.2%	-6.2%	-0.1%
Overall	100%	15.1%	0.2%

Figure MGH25
Predicted Changes in Outpatient Spending After the MGH Expansion
PET/CT Scans

	Volume Switching to MGH	Change in Spending per Switch	Change in Spending Overall
Commercial	23.1%	16.7%	1.2%
Original Medicare	47.2%	21.1%	1.0%
Medicare Health Plans	15.8%	25.9%	1.6%
MassHealth Non-Managed Care	1.8%	2.0%	0.1%
MassHealth Managed Care	8.3%	3.0%	0.2%
Other	4.0%	4.6%	0.3%
Overall	100%	18.4%	1.1%

Figure MGH26
Predicted Changes in Outpatient Spending After the MGH Expansion
Cardiovascular Procedures

	Volume Switching to MGH	Change in Spending per Switch	Change in Spending Overall
Commercial	20.3%	34.9%	0.1%
Original Medicare	62.5%	0.0%	0.0%
Medicare Health Plans	6.9%	1.8%	0.0%
MassHealth Non-Managed Care	2.0%	0.0%	0.0%
MassHealth Managed Care	5.1%	2.9%	0.0%
Other	3.2%	12.2%	0.0%
Overall	100%	7.7%	0.0%

Figure MGH27
Predicted Changes in Outpatient Spending After the MGH Expansion
Oncology Visits

	Volume Switching to MGH	Change in Spending per Switch	Change in Spending Overall
Commercial	27.2%	69.3%	1.5%
Original Medicare	48.2%	2.9%	0.1%
Medicare Health Plans	9.9%	3.2%	0.1%
MassHealth Non-Managed Care	2.7%	0.1%	0.0%
MassHealth Managed Care	8.6%	24.5%	0.4%
Other	3.4%	-11.8%	-0.2%
Overall	100%	22.3%	0.5%

Figure MGH28

