



www.mass.gov/southcoastrail



South Coast Rail - Phase 1

Briefing for Taunton City Council

September 29, 2020

Overview: Project Update

- Phase 1 service is planned for the end of 2023, and it is fully funded in the FY20-FY24 Capital Investment Plan
- The MBTA awarded the Fall River line construction package to Skanska DW White JV for nearly \$159M and the Middleborough Secondary, New Bedford Main Line and Systems contract was awarded to the Joint Venture of South Coast Rail Constructors for \$403.5 million (The Middlesex Corporation and Tutor Parini)
- Construction will begin before the end of 2020
- Early action work is nearly complete to prepare the right-of-way and replace 4 railroad bridges



Taunton River RR bridge



Railroad bridge replacement

Early Demolition Contract

- \$1.7M demolition contract was awarded to DW White Construction of Acushnet
- Work was scheduled at nine sites
- Taunton sites included:
 - 91 Old Colony Ave. and 1141 County St.
- Early demolition is estimated for completion in November 2020

Taunton Demolition Properties: County Rd



Demolition Property: 91 Old Colony



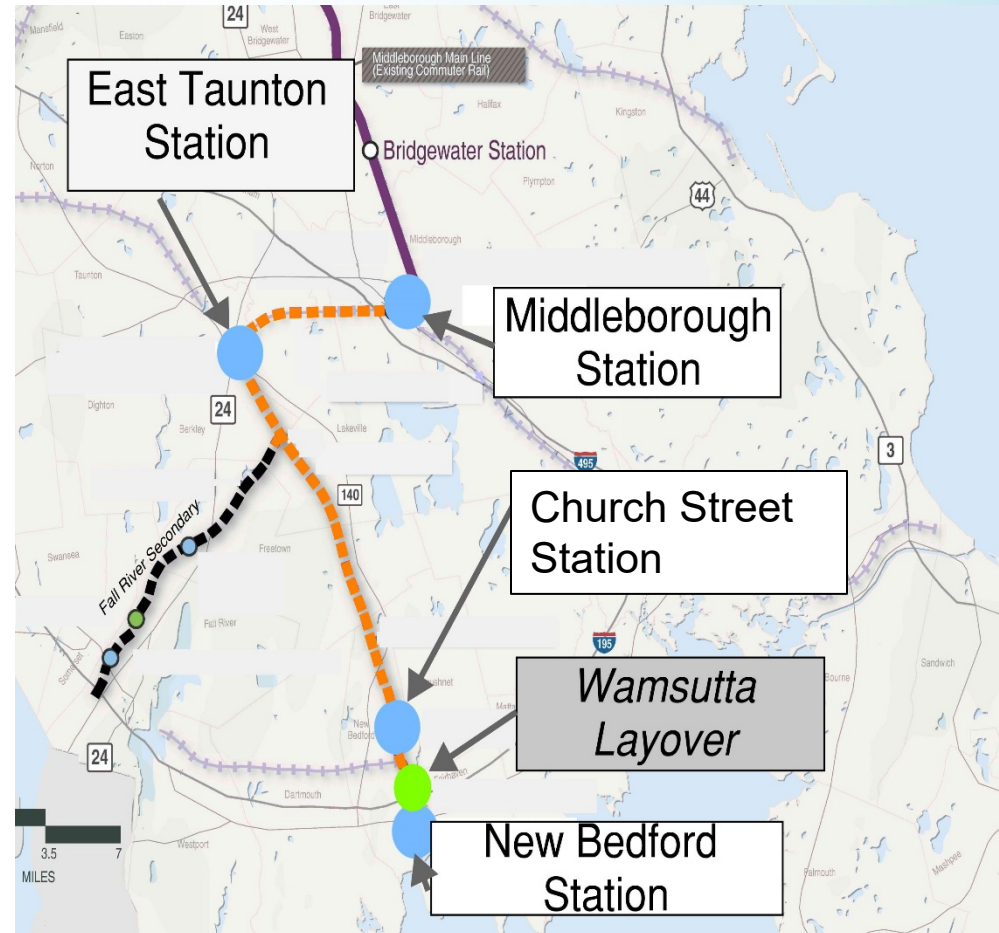
Fall River Secondary Contract

- 2 stations
- 1 overhead bridge and 7 under-grade bridges
- 10 grade crossings and 6 interlockings
- Weaver's Cove Layover Facility
- 12.1 miles of ROW
- Contractor is submitting a schedule and other required plans
- Notice to Proceed has been awarded



Elements of the New Bedford Main Line Package

- 27 Miles Track
- 4 New Stations – ***East Taunton included***
- 1 Layover (Wamsutta)
- 11 Grade Crossings
- 10 Culverts
- Systems Installation
- Positive Train Control
- Test/Commissioning
- Safety Certifications



East Taunton Station Rendering



East Taunton Station Features

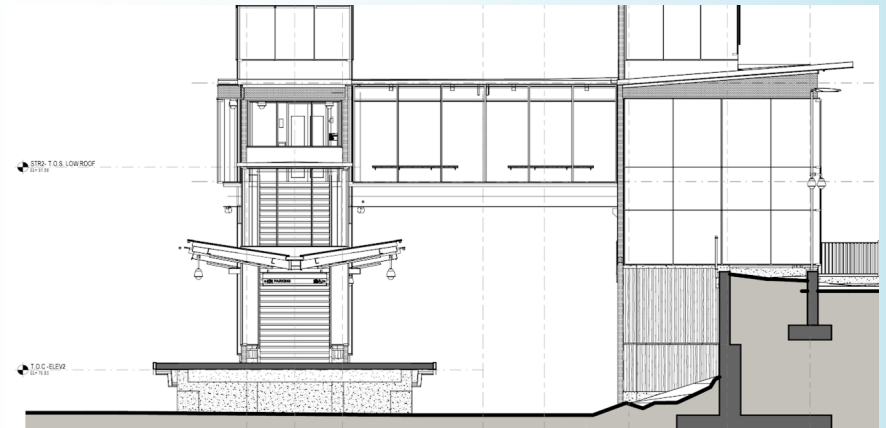
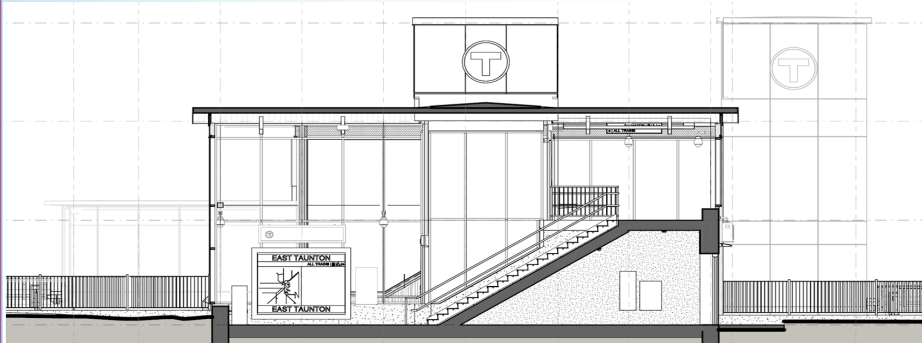
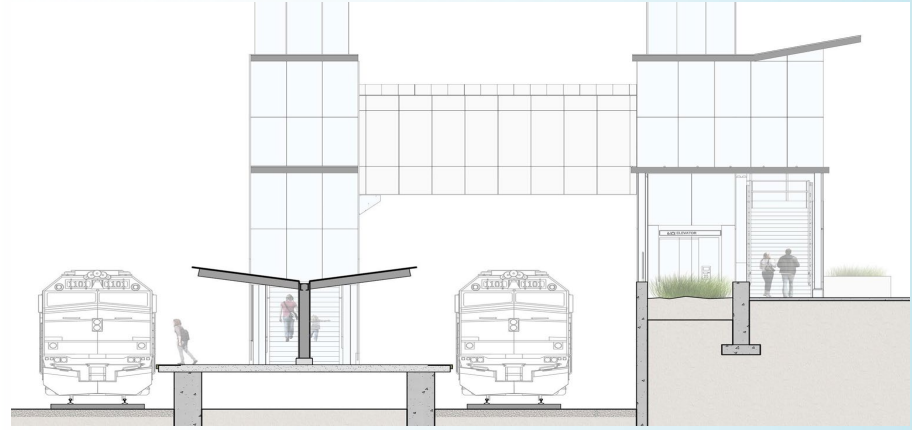
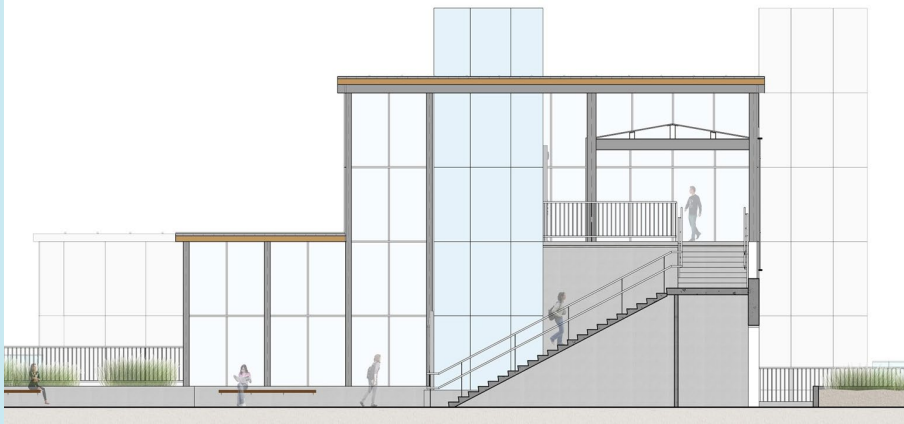
- Located at 1141 County St. (Route 140 and Industrial Drive), East Taunton
- High level, center island platform – the only one in SCR Phase 1 - with elevators, ramps & bridges for the vertical circulation
- 800-foot platform with 4 canopies
- Transition plaza for bus stop and drop-off space
- Parking spaces – 363; bike parking, 22; accessible and EV parking
- Surrounding area improvements are included

Site Programming

- Vehicular parking – 363 spaces
- Rideshare parking
- Bicycle parking with canopies

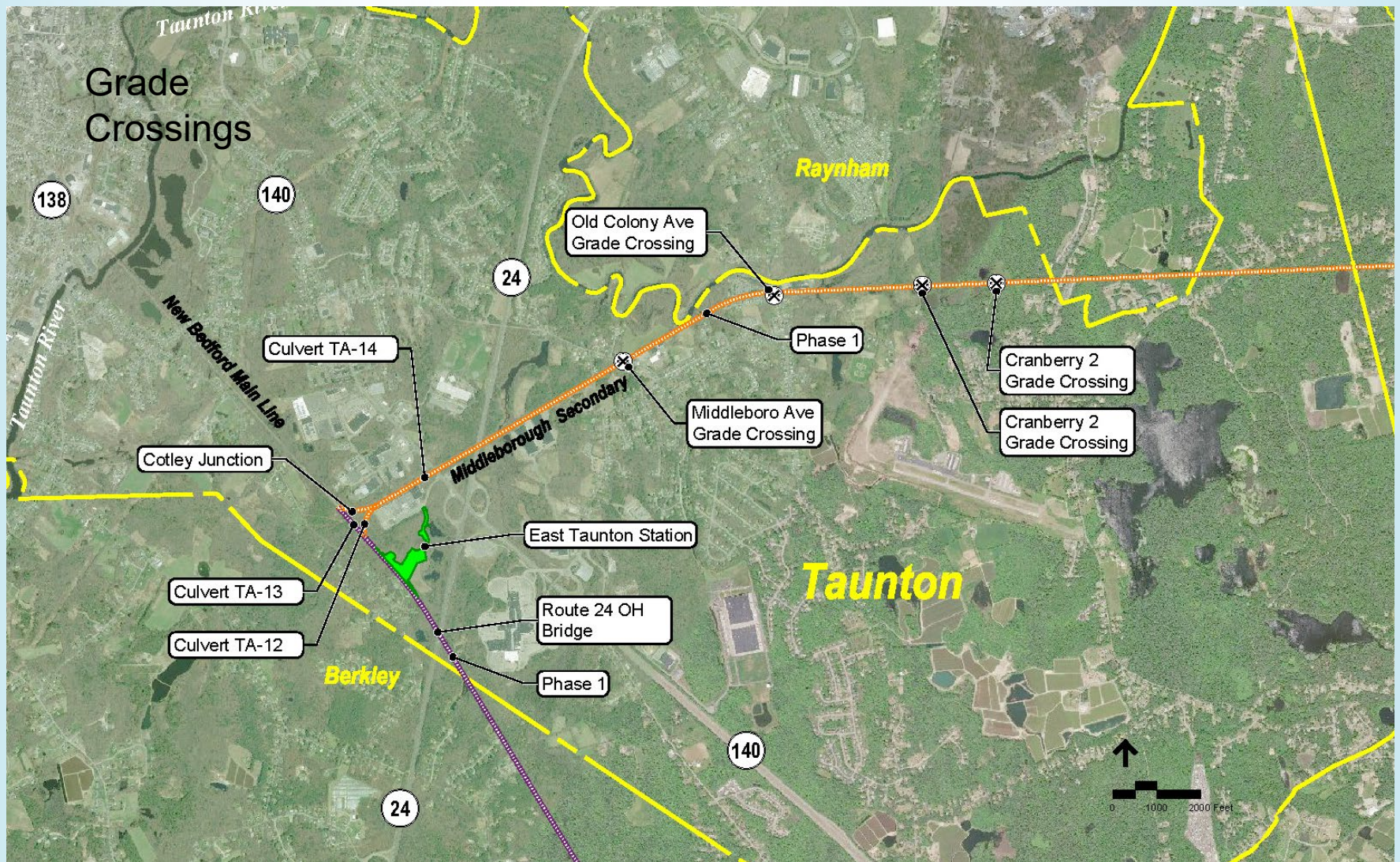


Accessing the Station





*Station site
aerial view*



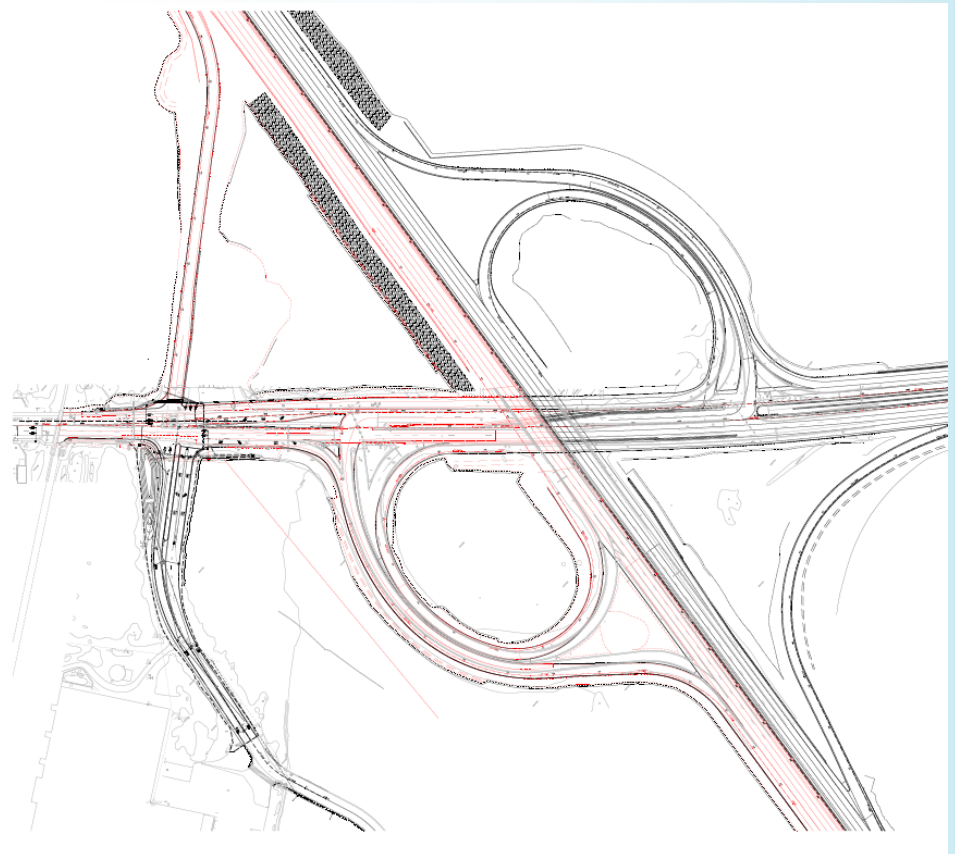
Area Improvements

- Entrance from Route 140 on to Industrial Drive, which will be aligned with the proposed Route 24 southbound slip ramp
- Adding a traffic signal and two new turn lanes on Industrial Drive
- Includes adding a sidewalk along Route 140 and Industrial Drive on the south side
- Site work will support TOD on the Kelly property



Route 28/140 Interchange

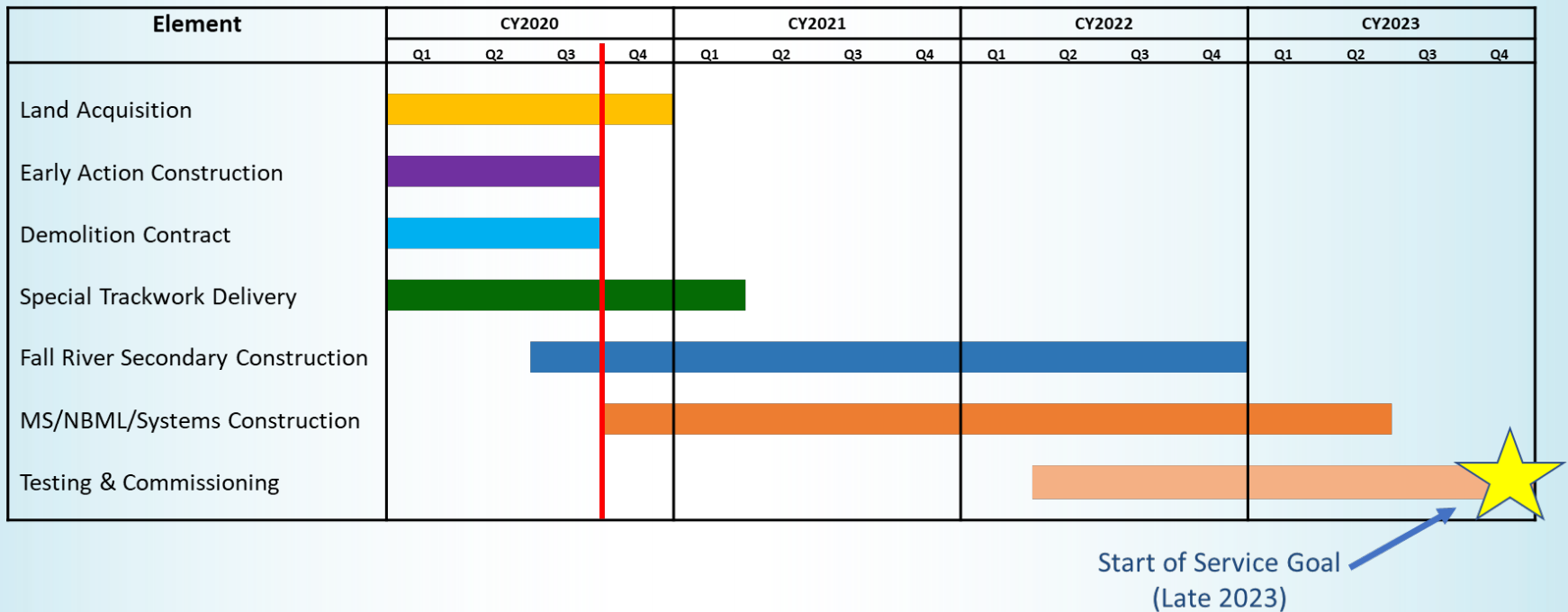
- Coordinating with Mass Highway
- Station entrance will be realigned to be opposite the Rt. 24 South Off-ramp



Construction in Taunton

- Preparation
 - Encroachments: 103 Old Colony, working with owner
 - Noise Mitigation Program for operating railroad: estimate of a dozen eligible properties, program in development
- Schedule: Contractor will submit this fall, expected to be underway by the end of 2020
- SCR Hotline will be available for questions or concerns during construction
- Team available to meet with residents, businesses and elected officials during construction

Phase 1 Construction Schedule



How to Follow SCR

- Visit the project website and sign up for updates and construction information:
www.mass.gov/southcoastrail
- Participate in a virtual public meeting – beginning this fall in SCR communities
- Send us comments at
SouthCoastRail@dot.state.ma.us

