

**Charles D. Baker**  
Governor

**Karyn Polito**  
Lieutenant Governor



**Marylou Sudders**  
Secretary

**Monica Bharel, MD, MPH**  
Commissioner

# **Results from the Body Mass Index Screening in Massachusetts Public School Districts, 2012**

**August 2015**



---

# Massachusetts Department of Public Health

---

School Health Unit  
Bureau of Community Health and Prevention

## Results from the Body Mass Index Screening in Massachusetts Public School Districts, 2012

*Charlie Baker, Governor*

*Marylou Sudders, Secretary of Health and Human Services*

*Monica Bharel, MD, MPH, Commissioner, Department of Public Health*

*Carlene Pavlos, MTS, Director, Bureau of Community Health and Prevention*

*Thomas Land, PhD, Director, Office of Data Management and Outcomes Assessment*

*Mary Ann Gapinski, MSN, RN, NCSN, Director of School Health Services*

*August 2015*

## Acknowledgements

Staff in the School Health Unit, Bureau of Community Health and Prevention prepared this report:

Robert Leibowitz, PhD, Director of School Health Statistics and Evaluation  
Maureen Foley, MPH, RN, School Health Advisor  
Mary Ann Gapinski, MSN, RN, NCSN, Director of School Health Services

We wish to express our gratitude to the school nurses of Massachusetts who collected the data that made this report possible. This report reflects the work both of the school nurses in the Essential School Health Service Programs who were the first to implement BMI screenings, and of the school nurses in the rest of the Commonwealth, who implemented BMI screenings shortly thereafter. We would also like to acknowledge the educational conferences and online training in Body Mass Index screenings provided by the Northeastern University School Health Institute during the past five years.

We also wish to acknowledge the contributions of the staff of the many programs within the Massachusetts Department of Public Health who provided topical overviews and reviewed draft sections of this report relevant to their areas of expertise, including Tom Land, PhD, Interim Director, Office of Health Information Policy and Informatics and Bruce Cohen, PhD, Director, Division of Research and Epidemiology.

For further information about this report, about the Body Mass Index Screening program, the Essential School Health Programs or the School Health Unit, please contact:

Mary Ann Gapinski, School Health Unit  
Bureau of Community Health and Prevention  
Massachusetts Department of Public Health  
250 Washington Street, 5<sup>th</sup> floor  
Boston, MA 02108-4619.  
Telephone: (617) 624-5427.  
Email: [Mary.Gapinski@massmail.state.ma.us](mailto:Mary.Gapinski@massmail.state.ma.us).  
Website: <http://www.mass.gov/dph/fch/schoolhealth>

# Table of Contents

Highlights .....	7
Introduction .....	9
Essential School Health Services.....	10
Body Mass Index Screening of Public School Students .....	11
BMI Data Collected in 2011-2012 School Year .....	12
Potential Uses of the Data.....	13
Methodology.....	15
Definition of Body Mass Index .....	15
BMI Screening Weight Categories.....	15
Data Quality .....	18
Limitations .....	20
Training of School Nurses .....	20
Data Collection.....	21
Note on Data Inclusion and Interpretation.....	21
Tables and Figures.....	24
Table 1. Overweight or Obese Children in Grades 1, 4, 7, 10 in Essential School Health Services Districts, 2011-2012.....	25
Table 2. Body Mass Index Screening Results for Children in Grade 1 in Massachusetts School Districts, 2011-2012.....	39
Table 3. Body Mass Index Screening Results for Children in Grade 4 in Massachusetts School Districts, 2011-2012.....	50
Table 4. Body Mass Index Screening Results for Children in Grade 7 in Massachusetts School Districts, 2011-2012.....	62
Table 5. Body Mass Index Screening Results for Children in Grade 10 in Massachusetts School Districts, 2011-2012.....	75
Table 6. Underweight Children in Grades 1, 4, 7, 10 in Massachusetts School Districts, 2011-2012.....	89
Figures 1 – 4. Body Mass Index (BMI) and Weight Categories for Grades 1, 4, 7, 10 by Gender for Massachusetts School Districts, 2011-2012.....	99
Figures 5 – 9. Healthy Weight, Overweight, Obese and Underweight Students in Grades 1, 4, 7, 10 by Gender in Massachusetts School Districts, 2011-2012 .....	101
Figure 10. Childhood Obesity and Median Household Income, 2011-2012 .....	104



## Highlights

- This report includes the results of BMI screenings performed during the 2011-2012 school year on 248,260 students, or 87 percent of Massachusetts public school students in grades 1, 4, 7 and 10. Of the students who were screened, 65.6% were in the healthy weight category, 16.2% were overweight, and 15.8% were obese. Thus, 31.9% of students were either overweight or obese. Of the male students, 33.6% were overweight or obese compared to 30.2% of the female students screened. In each of the four grades, more males than females fell into the obese or overweight category. The district-level highlights reported here only pertain to local and regional academic School Districts that reported at least 100 BMI screenings, and that reported results for all four grade levels.
- Among the local and regional public School Districts that reported the results of BMI screenings for all four grade levels, there was substantial variation (a difference greater than 30 percentage points) in the proportion of their students who were overweight or obese, ranging from 15.4% in Cohasset to 49.1% in Southbridge.
- Similarly, there was also substantial variation among the School Districts in the proportion of their students in the healthy weight category for each of the four grades. For example, among local and regional School Districts that reported screenings results for 100 or more 4<sup>th</sup> grade male students, the percentage of 4<sup>th</sup> grade male students in the healthy weight category ranged from 41.7% (Revere) to 84.6% (Hopkinton), with the overall Massachusetts 4<sup>th</sup> grade male total being 61.6%.
- There was variation by grade and gender in the percentage of students who were in the obese category. The lowest percentage of obesity was among 1<sup>st</sup> grade females at 12.6% compared to 13.7% of 1<sup>st</sup> grade males. The highest percentage of obesity was among 4<sup>th</sup> grade males at 19.0% compared to 15.6% for 4<sup>th</sup> grade females.
- There were no major differences by gender in the percentage of students who fell into the overweight category. The percentage of overweight varied somewhat by grade. It was lowest among students in Grade 1 at 14.6%, and highest among students in grade 4, at 17.0%.
- The percentage of students who were either overweight or obese was somewhat lower in grade 1: for grade 1, 27.8% were overweight or obese, compared to 34.3% for grade 4, 33.9% for grade 7 and 31.8 % for grade 10.

- The overall percentage of students who fell into the underweight category was low, 2.4%, and did not vary as dramatically among Massachusetts school districts. Among local and regional School Districts that reported screening results for 100 or more students, the percentage of underweight students ranged from 0.8% (Woburn) to 5.6% (Methuen).
- The percentage of overweight and obese students is negatively correlated with median household income: among local and regional academic School Districts that reported screening results for 100 or more students and included results for all four grades, the lower the median household income in a town, the higher the percentage of overweight and obese students. This relationship holds until the median household income reaches approximately \$100,000. Above that level, the percentage overweight and obese appears to flatten out at a low level, although it is difficult to draw conclusions from this because the number of towns in that income range is small.
- BMI statistics at the local level may vary from year to year due to factors that do not reflect long term trends, and changes in any single year should be interpreted with caution. Trends over longer time periods (5 to 6 years or more) are more meaningful than increases or decreases in a single year.

## Introduction

To address the significant public health problem of obesity, the Massachusetts Department of Public Health (DPH) launched its statewide Mass in Motion initiative in January 2009. Mass in Motion aims to promote wellness and to prevent overweight and obesity in Massachusetts – with a particular focus on the importance of healthy eating and physical activity. Mass in Motion uses a multi-faceted approach, including:

- The release of a *Call to Action* that documents the extent of the obesity epidemic in Massachusetts, its consequences, and efforts to combat it;
- Support for regulatory changes promoting healthy eating and physical activity, including: Body Mass Index (BMI) screening of public school students in grades 1, 4, 7, and 10 and School Nutrition Standards for Competitive Foods and Beverages;
- An Executive Order by Governor Patrick requiring state agencies responsible for large-scale food purchasing (e.g., DPH and DMH hospitals) to follow healthy nutritional guidelines in their food service operations. State purchases of food by these agencies run into the tens of millions of dollars per year;
- Municipal Wellness grants to cities and towns across the Commonwealth to implement community-level strategies to increase opportunities for healthy eating and active living. Funding for the initiative is a public/private partnership (including state and federal funding);
- A Workplace Wellness initiative to help employers create work environments that encourage healthy behaviors and reduce absenteeism and health insurance costs;
- The launch of a state-sponsored Mass in Motion website that promotes eating better and moving more at home, work, and in the community. The objective of the website is to provide simple, practical, cost-effective ways for Massachusetts residents to:
  - Improve eating habits
  - Increase physical activity
  - Ask experts questions about improving their diet and physical exercise routine
  - Get involved in helping to build healthy communities



## Essential School Health Services

The Department of Public Health's School Health Unit's mission is the promotion of quality school health services across the Commonwealth through consultation, regulation development, continuing education, and performance improvement initiatives. The Essential School Health Service (ESHS) Programs were developed in 1993, and expanded in 1999-2000 to (a) strengthen the administrative infrastructure of the school health service program (nursing leadership, staffing requirements, health assessments, policies, emergency care, etc.), (b) implement tobacco control and cessation programs, as well as support efforts to prevent substance abuse, (c) link the school health service program with local health agencies, health care providers, community-based activities, and public health insurance programs, and (d) develop management information systems. In 1999-2000 grantees were also required to provide specific health services to community private schools aimed at strengthening the school health services available to private school students. In FY 08, each experienced ESHS program was asked to assume responsibility for mentoring or partnering with two other school districts in order to spread the high quality standards to additional school districts.

In 2011-2012, there were 72 Essential School Health Service Programs, serving 105 cities and towns and approximately 457,798, or 48%, of Massachusetts public school students. In addition, there were 100 partner school districts with 238,507 students. A total of 696,305 students are included in the ESHS districts and their partner school districts.

Districts in the ESHS program were the first to systematically conduct BMI screenings and report the results to the Commonwealth. The next group to report BMI results were the ESHS partner districts, followed by the remainder of public school districts.

## Body Mass Index Screening of Public School Students

As a key component of the Mass in Motion initiative, in April 2009, the Public Health Council unanimously approved a regulation requiring school systems to measure the height and weight of public school students in grades 1, 4, 7 and 10 and use those figures to calculate their Body Mass Index (BMI). BMI is a method of determining if a child has a healthy weight compared to other children of the same age and sex. Children with a high BMI are more likely to become overweight or obese adults and be at a higher risk for diabetes, heart disease and some cancers. Helping children attain a healthy weight now, and stay at a healthy weight, may prevent serious illness later in life.

School nurses are responsible for oversight of the screening, including: parent notification, providing privacy during screening, training for any ancillary staff assisting with screening, recording and the confidential reporting of individual results to parents, and submitting aggregate data to DPH.

Parents and guardians are given the opportunity to waive their child's BMI screening at school by submitting a written request. The results of the screening are directly and confidentially communicated to the parents or guardians of each student. In addition, aggregate data is shared with local school and health officials and the Department of Public Health. No data on an *individual* student is shared with anyone other than that student's parents or guardians. All BMI screening results were mailed home to students, delivered directly to parents, or available through a secure internet portal to all students, regardless of BMI for age category. Education materials in multiple languages on healthy eating, portion sizes and physical activity were provided for families.

The BMI screening program has been phased in across Massachusetts. School districts that participate in the ESHS program have been collecting this data since 2004. During the 2009-2010 school year, 120 ESHS school districts reported BMI for the four grades. In the 2010-2011 school year, all public schools in Massachusetts were required to perform BMI screening for all students in grades 1, 4, 7, 10 (or corresponding age in ungraded schools). This report includes data from the public school districts that submitted BMI data for the 2011-2012 school year.

## BMI Data Collected in 2011-2012 School Year

This report includes data from 298 public school districts and organizations. These data were collected during the 2011-2012 school year and includes BMI screening results for 248,260 students. This is 87% of the 284,480 public school students in Massachusetts schools in grades 1, 4, 7, and 10. In addition, 1% of the enrollment was screened but excluded from this report due to errors in generating or reporting the data.

Category of Screening for 2011-2012 School Year	Number of Students	Percent of MA Enrollment in Grades 1, 4, 7, 10
<b>Total Massachusetts public school enrollment, grades 1,4,7,10</b>	<b>284,480</b>	<b>100 %</b>
Students screened in public school districts, grades 1,4,7,10, included in this report	248,260	87 %
Student enrollment in public school districts, grades 1,4,7,10, excluded from this report due to errors in generating or reporting the data	2,759	1 %
Students in public school districts, grades 1,4,7,10, BMI data not reported	33,461	12 %

Although DPH uses the term school "district" throughout this report, some organizations not considered to be school districts are also included. Organizations submitting data included local public school districts, academic regional school districts, school unions, vocational-technical regional school districts, agricultural school districts, charter school districts, and educational collaboratives. Data from private schools were not included in this report.

## Potential Uses of the Data

The goal of this report is to share this data widely with all community leaders so it can be used for sound community planning, program development and public health monitoring. In addition to providing useful information to individual students, their parents and their health care providers, the aggregated BMI screening data can be useful to many other stakeholders in each local community. The aggregate BMI data is an important indicator of the health of the current school-age population and is related to the health of future adults in that community. This data reflects patterns of healthy nutrition and physical activity which are aspects of a healthy, productive and economically vital community. The Department of Public Health is releasing this report to facilitate school nurses sharing the aggregated school district data with:

- School superintendents, principals and other administrators who make important policy decisions that influence the school environment;
- School committees and school wellness committees;
- Health educators, food service personnel, athletic directors, teachers and others who may impact healthy nutrition and physical activity within the school setting;
- Local boards of health;
- Parent teacher associations and site-based councils of parents;
- Municipal leadership, including mayors, town managers and city or town councils;
- Local primary care providers, community health centers, hospitals and other health care institutions;
- Local and regional health coalitions; and
- Local and regional municipal planners.

In addition, school nurses are encouraged to work with school administrators, school wellness committees, local boards of health and local planners to consider the appropriate sharing of aggregated data, at the school level, to promote individual school action plans. For example, a school may develop a school wellness policy that includes changes to the school's nutrition and physical activity policy, and promotes a walk to school plan facilitated by local planners, among other initiatives.

In addition, some school nurse leaders may choose to share the community's cardiac and stroke mortality and morbidity data along with the BMI screening data to enhance the connection of this BMI data with future health care costs for the community, including health insurance costs for future municipal employees.

School nurses are expected to share the BMI data with the superintendents, school committees, wellness advisory committees, parents' organizations and community agencies and providers. Schools have already used this data to assess the impact of after-school nutrition and fitness programs, such as the *Off Our Rockers Program* in the Gardner Public Schools. As schools implement improved nutrition standards, changes

in vending machine offerings, and exercise programs, they are closely watching the BMI results of the first grader cohort who move to fourth grade in order to determine the impact of their interventions on the BMIs. The BMI data is also being shared with local media as a method of increasing public awareness of obesity rates in communities--- and as an impetus for community wide programs, such as the Springfield Walking School Bus. This is a collaboration of school officials, law enforcement and other agencies. School staff (carrying a black and yellow umbrella) meet children on a one mile "bus" route and walk them to school. In some Springfield elementary schools, more than 100 children join the "bus" and school officials have noted an improvement in attendance.

## Methodology

### *Definition of Body Mass Index*

The Body Mass Index (BMI) is a tool that can be useful in early identification of possible health risk factors among children and youth. BMI (weight divided by height squared) is used to judge whether an individual's weight is appropriate for their height. BMI calculation in children considers gender, age, height and weight. All of this information must be recorded accurately to determine BMI.

BMI is a health *screening* tool and not a diagnostic tool. It is used to screen for obesity, overweight, healthy weight, or underweight and is only one of the data points used in a complete health assessment. Many other factors can influence a child's BMI, such as family history and muscularity. The BMI measure is plotted on BMI growth charts to reveal the child's percentile ranking, which indicates the relative position of the child's BMI among children of the same age and sex. The BMI-for-age percentile is used to interpret the BMI result because BMI is both age-and sex-specific for children and teens. These criteria are different from those used to interpret BMI for adults — which do not take into account age or sex. Age and sex are considered for children and teens for two reasons:

- The amount of body fat changes with age. (BMI for children and teens is often referred to as *BMI-for-age*.)
- The amount of body fat differs between girls and boys.

For example, a child may have a high BMI for age and sex, but to determine if this indicates a health problem, a health care provider would need to perform further assessments. These assessments might include skinfold thickness measurements, evaluations of diet, physical activity, family history, and other appropriate health screenings.

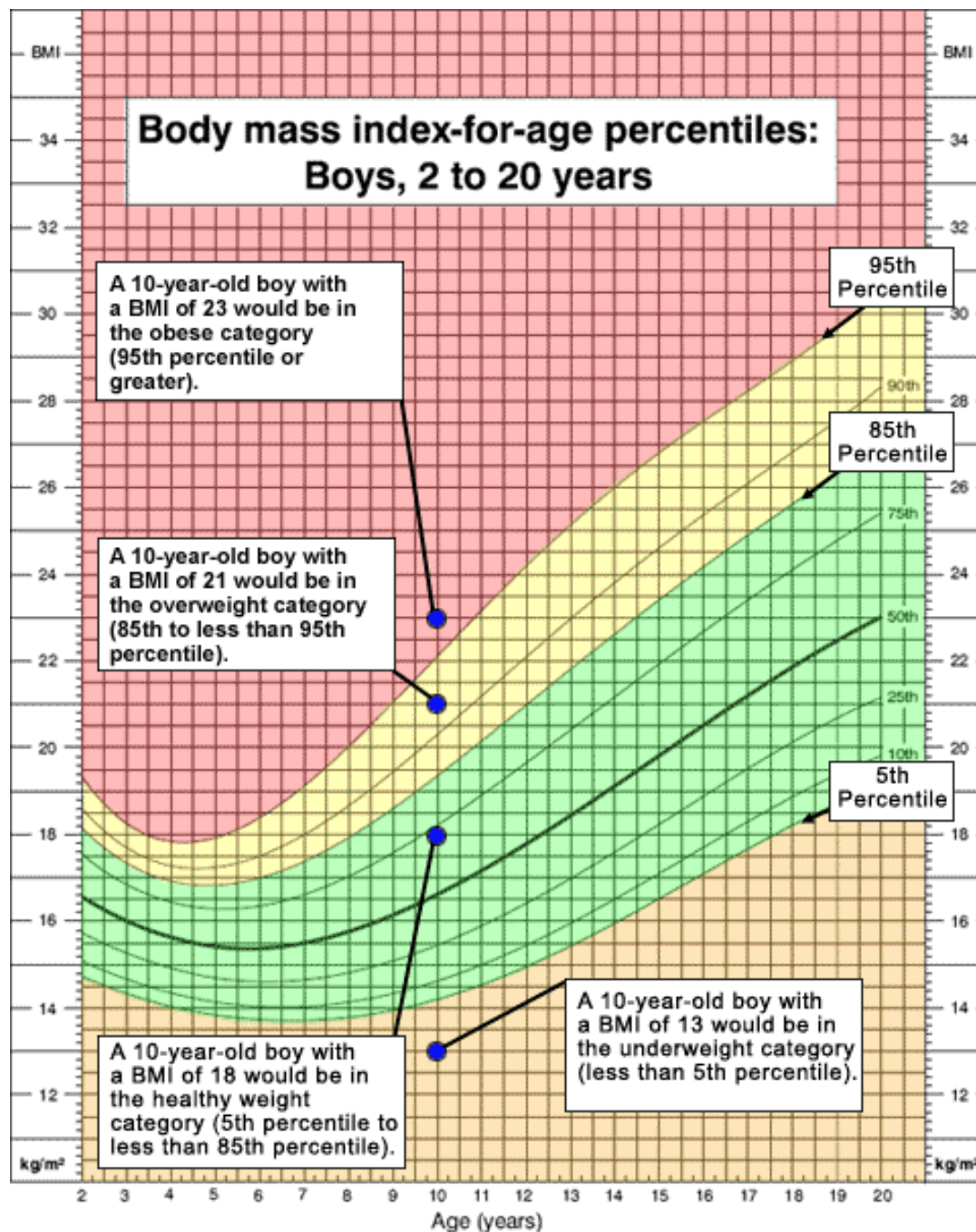
### *BMI Screening Weight Categories*

When the child's BMI percentile for age is less than the 5<sup>th</sup> percentile, the child is considered *underweight*. When the child's BMI for age percentile is between the 5<sup>th</sup> percentile and 85<sup>th</sup> percentile, that is considered a *healthy weight*. BMI for age percentiles greater than or equal to the 85<sup>th</sup> percentile but less than the 95<sup>th</sup> percentile are considered *overweight*. When a child's BMI for age percentile is equal to or greater than the 95<sup>th</sup> percentile, the child is considered *obese*. BMI-for-age weight status categories and the corresponding percentiles are shown in the following table:

<b>Weight Status Category</b>	<b>BMI for Age Percentile Range</b>
Underweight	Less than the 5 <sup>th</sup> percentile
Healthy weight	5 <sup>th</sup> percentile to less than the 85 <sup>th</sup> percentile
Overweight	85 <sup>th</sup> to less than the 95 <sup>th</sup> percentile
Obese	Equal to or greater than the 95 <sup>th</sup> percentile

Being overweight, obese or underweight can put a person at risk for certain health problems. A student who is overweight or obese has an increased risk of developing serious conditions, including type 2 diabetes, heart disease, high blood pressure, and orthopedic problems. A student who is underweight has an increased risk for heart problems, loss of bone mass and anemia. Underweight may also be a sign of an underlying eating or endocrine disorder.

See the following example of how some sample BMI results would be interpreted for a 10-year-old boy, based on the BMI for age percentiles.



CDC BMI-for-age growth chart.

Available at: [http://www.cdc.gov/growthcharts/clinical\\_charts.htm](http://www.cdc.gov/growthcharts/clinical_charts.htm)



## *Data Quality*

The first data quality assessment is performed at the school district level and usually occurs before the data report is submitted to DPH. When the Nurse Leaders and / or district data analysts assemble the data from each school, they review the results from each school and follow up on any unusual results reported. At DPH, a second level of screening is performed which focuses on identifying results that are outside known or expected ranges. Data reports are screened by identifying districts that submit data for more students than are enrolled in the district, or by identifying districts that submit results that are far outside the typical range for a weight category. The data for each district is also screened for inconsistencies by checking for large variations across years within each grade and checking for large variations across grade levels within the same year.

As a result of the DPH screening process, questions were raised about the quality of some or all of the data submitted by 13 districts. DPH contacted these districts and requested they check their data and either provide corrected data or an explanation for the anomaly. Of these 13 districts, 6 submitted corrected data reports, while 7 districts were either unable to find or check their records, unable to provide corrected data in time for it to be included in this report, or did not respond to the request for clarification. For 2 of these 7 districts, the data variation was suggestive of a problem in the 2011 data, so the data for those districts was included in the report but flagged with the following symbol: #.<sup>1</sup> For 5 of these 7 districts, some or all of their data was excluded from the report, as the source of the inconsistent data was the 2012 data submission and the size or pattern of the inconsistency was substantial.

---

<sup>1</sup> An example of this is the data from the town of Hull. In Hull, the percentage of overweight or obese grade 7 students was considerably lower in 2011-12 (28.8%) compared to the prior year (50.0%). Similar differences existed for the other grade levels as well. The nurse who submitted the data revealed that all the nurses in the district started using school health software to generate BMI data in 2011-12, likely resulting in improved data quality compared to the prior year, when the BMI data was generated by a variety of different tools, including a hand-held wheel or a calculator embedded in a web page. Those tools require the nurse to perform more work and manual calculations and are more subject to error.

<b>Districts Excluded (or Partly Excluded) from Report Listed by Reason for Exclusion</b>	<b>Number of Districts</b>
<b>Data quality problem (Data from all grade levels excluded)</b>	<b>3</b>
CHELSEA HOLYOKE COMMUNITY CHARTER SEVEN HILLS CHARTER	
<b>Data quality problem (Data from a single grade level excluded)</b>	<b>2</b>
IPSWICH MELROSE	
<b>Did not submit data</b>	<b>29</b>
AGAWAM BENJAMIN BANNEKER CHARTER PUBLIC BENJAMIN FRANKLIN CLASSICAL CHARTER PUBLIC BOSTON COLLEGIATE CHARTER BOSTON PREPARATORY CHARTER PUBLIC COMMUNITY DAY CHARTER PUBLIC DORCHESTER COLLEGIATE ACADEMY CHARTER EVERETT FRANKLIN GLOBAL LEARNING CHARTER PUBLIC GREATER FALL RIVER REGIONAL VOCATIONAL TECHNICAL GREATER NEW BEDFORD REGIONAL VOCATIONAL TECHNICAL GREENFIELD HANOVER HARVARD MARBLEHEAD COMMUNITY CHARTER PUBLIC MARTIN LUTHER KING JR. CHARTER SCHOOL OF EXCELLENCE MYSTIC VALLEY REGIONAL CHARTER NEIGHBORHOOD HOUSE CHARTER NORTH BROOKFIELD PHOENIX CHARTER ACADEMY PROSPECT HILL ACADEMY CHARTER READING ROXBURY PREPARATORY CHARTER SMITH LEADERSHIP ACADEMY CHARTER PUBLIC UPPER CAPE COD REGIONAL VOCATIONAL TECHNICAL WACHUSETT WEST BOYLSTON WRENTHAM	

## **Limitations**

BMI statistics at the local level may vary from year to year due to factors that do not reflect long term trends. Therefore, in any given city or town, increases or decreases in BMI statistics in any single year should be interpreted with caution. Short-term changes in BMI statistics may reflect a temporary change in the make-up of the student population in that district, screening of only part of the student population, or other short-term factors. Even with three years of data, assessment for trends may be misleading. Trends over longer time periods (5 to 6 years or more) are more meaningful than increases or decreases in any single year.

Within a school district, variations in the number of students screened in different years may indicate that there is missing data for one or more years, with one or more schools in the district not reporting. In years in which there is missing data the BMI statistics may not be representative of the entire student population of the district and should be interpreted with caution. In years in which there is missing data, changes in BMI statistics from year to year may be misleading.

In addition, for some smaller towns, the data presented represent relatively small numbers of students and therefore should be interpreted with caution. The smaller the student enrollment, the more likely that BMI statistics will fluctuate widely from year to year.

The accuracy of the BMI percentiles used in the statistics submitted to DPH depends on the accuracy of height and weight measurements and on use of proper procedures for calculating BMI percentiles from measured height and weight values. In districts using computer-based record-keeping systems, the accuracy of data reports also depends on the accurate retrieval and compilation of BMI statistics from those computer systems.

Measurements were taken in four grade levels and not from the entire student enrollment. Since overweight/obesity levels vary by age, the data in this report may not be generalizable to all Massachusetts public school students. However, it does provide information about the weight status, including overweight and obesity for over 200,000 public school students in four grade levels that are equally spaced through elementary, middle, and high school, and represents fully 87% of the public school enrollment in those grades.

## **Training of School Nurses**

Regional trainings for school nurses, physical education teachers and others involved in screening activities have been offered in workshops held by the School Health Institute at Northeastern University and funded by DPH. Alternatively, the training is available

online at the School Health Institute website <http://www.cps.neu.edu/shi/index.php>. More than 1,500 school nurses received this training.

The training includes:

- Massachusetts General Laws and Regulations on screenings
- Essential elements of Body Mass Index (BMI) screening
- Equipment and tools for proper measurement of height and weight
- Protocols for measuring height and weight
- Measuring Non-Ambulatory Students
- Calculating BMI and Recording Measurements
- Parent Communication, Referral and Follow-up

## Data Collection

School nurses perform height and weight measurements and record the information in a computer database containing student health records. A number of computerized health records used by school nurses have a BMI calculator embedded in the software which reduces the chance of calculation errors. The computerized records also have the child's exact age. When the height and weight is entered, BMI is automatically calculated, including the percentile. For schools where computerized health records are not available, DPH provides an Excel spreadsheet that calculates BMI percentiles and generates summary statistics.<sup>2</sup> Alternatively, schools could use the BMI calculator available as a web application from the CDC or other websites. Schools lacking computer access can use a BMI wheel or BMI chart to determine BMI percentile. The BMI percentiles are calculated by each school nurse or by a data analyst employed by the district. This information is then gathered and tabulated into an aggregate district-wide report, and sent to DPH.

In order to ensure the results would be representative of the students in their district, nurses were asked to complete BMI screenings on all students whose parents did not opt out of the screening. Of the local and regional public school districts that submitted BMI data for the 2011-2012 school year, 100% submitted screening data that included at least 70% of their student enrollment.

## Note on Data Inclusion and Interpretation

Data that did not pass data quality tests and could not be verified were excluded from the analysis.

---

<sup>2</sup> See [www.mass.gov/dph/fch/schoolhealth](http://www.mass.gov/dph/fch/schoolhealth) Clicking on the *School Health Screening* link brings up a page with a downloadable Excel spreadsheet BMI calculator.

In cases in which fewer than 10 students were screened, this is noted in the table. The observed rates in these cases should be interpreted cautiously due to the instability of estimates when such small numbers are involved.

The school districts in most cities and towns serve elementary, middle, and high school students and the BMI statistics for those districts reflect overweight and obesity levels for students in grades 1, 4, 7 and 10. In some small cities and towns, however, schools are organized into regional school districts, with elementary school students attending schools in one district, middle school students attending schools in a another district, and high school students attending schools in yet a third district. The specific organizational structure of these school districts varies by region. As a result, there may be more than one local or regional school district serving students from the same community or region. In these cases, when separate BMI statistics are reported for each district, it provides a scattered picture of the weight status of students from those towns. In order to provide a more unified view of the weight status of students in those towns and regions, wherever possible DPH combined BMI statistics from all of the districts serving the same geographical area. The following list shows which districts were combined into a single record in the data tables that follow. To find BMI statistics for the district listed in the left-hand column, look up the district shown in the right-hand column.

**District report that was combined  
with regional data**

Berkley  
Brewster  
Carlisle  
Clarksburg  
Concord  
Eastham  
Edgartown  
Florida  
Halifax  
Kingston  
Lanesborough  
Lincoln  
Marion  
Mattapoisett  
Mount Greylock  
Nahant  
Norfolk  
Oak Bluffs  
Orange  
Orleans  
Petersham  
Plainville  
Plympton  
Provincetown  
Rochester

**Regional district or School Union  
containing combined record**

Somerset Berkley Regional  
Nauset  
Concord-Carlisle  
Northern Berkshire  
Concord-Carlisle  
Nauset  
Martha's Vineyard  
Northern Berkshire  
Silver Lake  
Silver Lake  
Williamstown-Lanesborough  
Lincoln-Sudbury  
Old Rochester  
Old Rochester  
Williamstown-Lanesborough  
Swampscott  
King Philip  
Martha's Vineyard  
Ralph C Mahar  
Nauset  
Ralph C Mahar  
King Philip  
Silver Lake  
Nauset  
Old Rochester

Savoy  
Somerset  
Sudbury  
Swampscott  
Tisbury  
Tri-Town School Union  
Truro  
Up-Island Regional  
Wellfleet  
Williamstown

Northern Berkshire  
Somerset Berkley Regional  
Lincoln-Sudbury  
Swampscott  
Martha's Vineyard  
Masconomet  
Nauset  
Martha's Vineyard  
Nauset  
Williamstown-Lanesborough

## Tables and Figures

**Table 1. Overweight or Obese Children in Grades 1, 4, 7, 10 in Massachusetts School Districts, 2011-2012**

School District	Total number of students screened (N)	Males			Females			Males and Females		
		Over- weight (%)	Obese (%)	Over- weight or Obese (%)	Over- weight (%)	Obese (%)	Over- weight or Obese (%)	Over- weight (%)	Obese (%)	Over- weight or Obese (%)
<b>TOTAL</b>	<b>248,007</b>	<b>16.3</b>	<b>17.4</b>	<b>33.6</b>	<b>16.1</b>	<b>14.1</b>	<b>30.2</b>	<b>16.2</b>	<b>15.8</b>	<b>31.9</b>
ABBY KELLEY FOSTER REG CHARTER	321	21.2	21.2	42.4	23.8	17.2	41.1	22.4	19.3	41.7
ABINGTON	232	16.1	24.6	40.7	10.5	19.3	29.8	13.4	22.0	35.3
ACADEMY OF PACIFIC RIM CHARTER	112	20.7	34.5	55.2	27.8	29.6	57.4	24.1	32.1	56.3
ACCEPT EDUCATION COLLABORATIVE	11	*	*	*	*	*	*	*	*	*
ACTON-BOXBOROUGH REGIONAL	1,564	13.4	6.2	19.6	10.9	4.7	15.6	12.1	5.4	17.5
ACUSHNET	333	15.9	17.0	33.0	21.7	20.4	42.0	18.6	18.6	37.2
ADAMS-CHESHIRE REGIONAL	389	12.0	19.8	31.8	15.7	19.3	35.0	13.9	19.5	33.4
ADVANCED MATH AND SCIENCE ACADEMY CHARTER	278	12.4	8.3	20.7	*	*	12.8	11.9	5.0	16.9
ALMA DEL MAR CHARTER SCHOOL	15	*	*	*	*	*	*	*	*	*
AMESBURY	706	11.4	18.4	29.7	12.5	11.9	24.4	11.9	15.3	27.2
AMHERST-PELHAM (SCHL UNION 26)	791	14.1	11.9	26.0	14.2	9.3	23.5	14.2	10.6	24.8
ANDOVER	1,893	16.1	8.5	24.6	13.6	4.9	18.5	14.9	6.8	21.7
ARLINGTON	1,377	10.8	9.4	20.2	11.3	5.0	16.2	11.0	7.2	18.2
ASHBURNHAM-WESTMINSTER REG	661	16.6	14.1	30.7	13.4	10.4	23.7	15.1	12.4	27.5
ASHLAND	756	16.4	11.0	27.4	13.5	9.6	23.2	14.9	10.3	25.3
ASSABET VALLEY VOC TECH REG	250	16.1	21.7	37.8	21.5	21.5	43.0	18.4	21.6	40.0
ATHOL-ROYALSTON REGIONAL	402	12.8	25.7	38.5	20.1	21.7	41.8	16.2	23.9	40.0
ATLANTIS CHARTER	85	*	*	53.1	*	*	39.6	17.6	27.1	44.7
ATTLEBORO	1,656	16.9	20.5	37.4	19.0	17.9	36.9	17.9	19.3	37.2
AUBURN	702	15.6	19.6	35.3	12.0	12.3	24.3	14.0	16.2	30.2



**Table 1. Overweight or Obese Children in Grades 1, 4, 7, 10 in Massachusetts School Districts, 2011-2012**

School District	Total number of students screened (N)	Males			Females			Males and Females		
		Over- weight (%)	Obese (%)	Over- weight or Obese (%)	Over- weight (%)	Obese (%)	Over- weight or Obese (%)	Over- weight (%)	Obese (%)	Over- weight or Obese (%)
AVON	219	16.7	21.3	38.0	16.2	18.0	34.2	16.4	19.6	36.1
AYER SHIRLEY REGIONAL	473	16.5	19.2	35.6	21.2	15.6	36.8	18.6	17.5	36.2
BARNSTABLE	1,457	19.6	17.0	36.6	16.8	18.5	35.3	18.2	17.8	36.0
BEDFORD	723	14.9	12.0	27.0	12.3	10.3	22.6	13.7	11.2	24.9
BELCHERTOWN	780	15.8	12.7	28.6	14.7	10.6	25.3	15.3	11.7	26.9
BELLINGHAM	716	15.2	11.4	26.6	17.8	9.8	27.6	16.5	10.6	27.1
BELMONT	1,192	14.3	11.0	25.3	12.6	6.6	19.2	13.4	8.7	22.1
BERKSHIRE ARTS AND TECHNOLOGY CHARTER	81	*	*	38.5	*	*	35.7	16.0	21.0	37.0
BERKSHIRE HILLS REGIONAL	395	15.0	10.6	25.6	11.7	11.7	23.4	13.4	11.1	24.6
BERLIN BOYLSTON (SCHL UNION 60)	286	16.3	15.7	32.0	18.8	12.0	30.8	17.5	14.0	31.5
BEVERLY	1,195	15.4	18.2	33.6	16.1	13.3	29.5	15.7	15.9	31.6
BI-COUNTY COLLABORATIVE (BICO)	56	*	*	*	*	*	*	*	*	50.0
BILLERICA	1,794	15.6	20.9	36.5	19.4	14.1	33.5	17.5	17.5	35.0
BLACKSTONE VALLEY VOC TECH REG	254	14.9	23.6	38.5	18.9	12.3	31.1	16.5	18.9	35.4
BLACKSTONE-MILLVILLE REGIONAL	568	17.1	16.7	33.8	18.5	12.9	31.4	17.8	14.8	32.6
BLUE HILLS VOC TECH REG	209	16.5	12.2	28.7	13.8	11.7	25.5	15.3	12.0	27.3
BOSTON	12,511	17.7	24.3	42.0	18.8	21.6	40.4	18.3	23.0	41.2
BOSTON RENAISSANCE CHARTER	288	17.6	22.2	39.9	16.3	22.2	38.5	17.0	22.2	39.2
BOURNE	632	16.6	15.6	32.2	15.4	13.7	29.1	16.0	14.7	30.7
BRAINTREE	1,683	16.1	15.8	31.8	16.4	10.9	27.3	16.2	13.4	29.6
BRIDGEWATER-RAYNHAM REGIONAL	1,699	15.4	18.6	33.9	16.8	10.6	27.4	16.1	14.7	30.8
BRISTOL COUNTY AGR	109	*	*	47.2	15.1	23.3	38.4	16.5	24.8	41.3
BRISTOL-PLYMOUTH VOC TECH REG	311	17.7	26.5	44.2	16.2	23.8	40.0	17.0	25.4	42.4

**Table 1. Overweight or Obese Children in Grades 1, 4, 7, 10 in Massachusetts School Districts, 2011-2012**

School District	Total number of students screened (N)	Males			Females			Males and Females		
		Over- weight (%)	Obese (%)	Over- weight or Obese (%)	Over- weight (%)	Obese (%)	Over- weight or Obese (%)	Over- weight (%)	Obese (%)	Over- weight or Obese (%)
BROCKTON	4,389	16.7	23.1	39.8	17.9	22.2	40.1	17.3	22.6	39.9
BROOKLINE	2,115	14.7	6.5	21.2	10.9	5.2	16.1	12.8	5.9	18.7
BURLINGTON	964	14.9	11.4	26.3	13.3	9.8	23.1	14.2	10.7	24.9
CAMBRIDGE	1,530	17.7	17.7	35.5	16.6	14.6	31.2	17.2	16.1	33.3
CANTON	923	15.1	14.2	29.4	16.4	11.1	27.5	15.8	12.6	28.4
CAPE COD COLLABORATIVE	21	*	*	*	*	*	*	*	*	57.1
CAPE COD LIGHTHOUSE CHARTER	76	*	*	38.5	*	*	32.4	14.5	21.1	35.5
CAPE COD REGION VOC TECH REG	171	9.8	22.3	32.1	18.6	20.3	39.0	12.9	21.6	34.5
CAPS EDUCATIONAL COLLAB.	22	*	*	*	*	*	*	*	*	45.5
CARVER	508	13.7	15.7	29.4	14.6	10.7	25.3	14.2	13.2	27.4
CENTRAL BERKSHIRE REGIONAL	485	16.5	11.7	28.2	13.1	18.1	31.2	14.8	14.8	29.7
CHATHAM	187	12.5	20.8	33.3	12.1	15.4	27.5	12.3	18.2	30.5
CHELMSFORD	1,546	15.3	13.7	28.9	13.6	10.1	23.7	14.4	11.9	26.3
CHICOPEE	2,249	20.6	21.2	41.7	21.6	18.8	40.5	21.1	20.1	41.1
CHRISTA MCAULIFFE REG CHARTER	97	*	*	23.3	*	*	32.4	*	*	26.8
CITY ON A HILL CHARTER	46	*	*	*	*	*	*	*	*	34.8
CLINTON	462	16.7	21.0	37.7	21.0	15.1	36.1	18.6	18.4	37.0
CODMAN ACADEMY CHARTER	41	*	*	*	*	*	*	*	*	31.7
COHASSET	467	13.2	6.1	19.3	*	*	11.7	10.7	4.7	15.4
COLLABORATIVE FOR EDUCATIONAL SERVICES	13	*	*	*	*	*	*	*	*	*
COMMUNITY CHARTER SCHOOL OF CAMBRIDGE	109	28.3	18.3	46.7	20.4	24.5	44.9	24.8	21.1	45.9
CONCORD-CARLISLE REGIONAL	1,152	10.0	5.8	15.8	9.1	4.0	13.1	9.5	4.9	14.4
CONSERVATORY LAB CHARTER	50	*	*	*	*	*	*	*	*	*

**Table 1. Overweight or Obese Children in Grades 1, 4, 7, 10 in Massachusetts School Districts, 2011-2012**

School District	Total number of students screened (N)	Males			Females			Males and Females		
		Over- weight (%)	Obese (%)	Over- weight or Obese (%)	Over- weight (%)	Obese (%)	Over- weight or Obese (%)	Over- weight (%)	Obese (%)	Over- weight or Obese (%)
DANVERS	1,105	19.1	16.2	35.3	20.2	10.5	30.7	19.6	13.4	33.0
DARTMOUTH	1,209	14.6	18.5	33.2	16.9	14.1	31.0	15.7	16.5	32.2
DEDHAM	882	16.6	22.5	39.1	13.9	14.9	28.8	15.3	18.8	34.1
DENNIS-YARMOUTH REGIONAL	787	14.4	19.6	34.0	18.5	13.2	31.7	16.4	16.5	32.9
DIGHTON-REHOBOTH REGIONAL	907	18.0	11.5	29.4	12.9	12.4	25.2	15.5	11.9	27.5
DOUGLAS	491	18.2	8.4	26.6	11.9	7.2	19.1	14.7	7.7	22.4
DOVER-SHERBORN (SCHL UNION 50)	674	12.8	7.5	20.3	10.0	5.2	15.2	11.4	6.4	17.8
DRACUT	1,186	16.3	21.5	37.8	18.5	14.3	32.8	17.3	18.2	35.5
DUDLEY-CHARLTON REGIONAL	1,283	21.1	11.3	32.4	17.0	13.4	30.4	19.0	12.4	31.4
DUXBURY	946	13.7	10.2	23.8	14.1	4.1	18.2	13.8	7.4	21.2
EAST BRIDGEWATER	595	15.0	14.3	29.3	17.2	9.7	26.9	16.1	11.9	28.1
EAST LONGMEADOW	859	14.9	14.4	29.3	10.0	10.7	20.6	12.5	12.6	25.0
EASTHAMPTON	441	22.3	18.6	40.9	21.3	22.2	43.4	21.8	20.4	42.2
EASTON	1,145	16.1	12.6	28.7	14.3	11.8	26.1	15.2	12.2	27.4
EDWARD BROOKE CHARTER (ALL CAMPUSES)	213	13.1	17.2	30.3	17.5	27.2	44.7	15.5	22.5	38.0
ERVING (SCHOOL UNION 28)	123	*	*	*	*	*	*	13.8	11.4	25.2
ESSEX AGR TECH	105	*	*	23.8	*	*	36.5	19.0	12.4	31.4
EXCEL ACADEMY CHARTER	53	*	*	*	*	*	*	*	*	34.0
FAIRHAVEN	560	12.1	22.3	34.4	15.5	15.5	30.9	13.8	18.9	32.7
FALL RIVER	2,904	16.6	21.9	38.5	17.6	24.7	42.3	17.0	23.1	40.2
FALMOUTH	760	17.4	16.4	33.8	18.9	14.1	33.0	18.2	15.3	33.4
FARMINGTON RIVER REGIONAL	38	*	*	*	*	*	*	*	*	*
FITCHBURG	1,427	16.2	28.9	45.1	19.7	24.5	44.2	17.9	26.7	44.6

**Table 1. Overweight or Obese Children in Grades 1, 4, 7, 10 in Massachusetts School Districts, 2011-2012**

School District	Total number of students screened (N)	Males			Females			Males and Females		
		Over- weight (%)	Obese (%)	Over- weight or Obese (%)	Over- weight (%)	Obese (%)	Over- weight or Obese (%)	Over- weight (%)	Obese (%)	Over- weight or Obese (%)
FOUR RIVERS CHARTER	64	*	*	*	*	*	*	*	*	18.8
FOXBOROUGH	756	14.7	12.5	27.2	12.1	12.1	24.2	13.4	12.3	25.7
FRAMINGHAM	2,032	17.5	19.2	36.6	17.1	15.4	32.4	17.3	17.3	34.5
FRANCIS W PARKER CHARTER	136	*	*	29.3	*	*	23.0	19.1	7.4	26.5
FRANKLIN COUNTY VOC TECH REG	123	28.8	16.3	45.0	*	*	37.2	23.6	18.7	42.3
FREETOWN-LAKEVILLE REGIONAL	827	16.1	16.8	33.0	13.9	13.9	27.8	15.1	15.5	30.6
FRONTIER (SCHOOL UNION 38)	444	12.0	14.8	26.9	15.8	13.2	28.9	14.0	14.0	27.9
GARDNER	635	17.0	17.5	34.5	15.4	19.1	34.5	16.2	18.3	34.5
GATEWAY REGIONAL	305	20.0	17.8	37.8	18.8	11.8	30.6	19.3	14.4	33.8
GEORGETOWN	485	13.1	13.1	26.2	11.6	5.2	16.7	12.4	9.3	21.6
GLOUCESTER	897	17.0	21.2	38.2	18.9	16.3	35.2	17.9	18.7	36.7
GLOUCESTER COMMUNITY ARTS CHARTER	39	*	*	*	*	*	*	*	*	25.6
GRAFTON	877	16.5	13.7	30.2	14.1	10.7	24.8	15.3	12.2	27.5
GRANBY	316	16.7	17.3	33.9	9.5	16.2	25.7	13.3	16.8	30.1
GREATER LAWRENCE VOC TECH REG	326	15.5	28.0	43.5	24.7	25.3	50.0	19.9	26.7	46.6
GREATER LOWELL VOC TECH REG	491	12.1	31.7	43.8	20.0	25.7	45.7	15.5	29.1	44.6
GROTON-DUNSTABLE REGIONAL	765	14.9	9.8	24.7	13.3	6.1	19.4	14.1	8.0	22.1
HADLEY	175	24.4	12.2	36.6	16.1	12.9	29.0	20.0	12.6	32.6
HAMILTON-WENHAM REGIONAL	588	12.9	7.4	20.3	10.1	4.1	14.2	11.4	5.6	17.0
HAMPDEN CHARTER SCHOOL OF SCIENCE	77	*	*	45.9	*	*	42.5	*	*	44.2
HAMPDEN-WILBRAHAM REGIONAL	992	15.9	13.8	29.7	18.2	9.3	27.5	17.0	11.6	28.6
HAMPSHIRE (SCHOOL UNION 66)	523	15.4	14.2	29.6	14.8	12.2	27.0	15.1	13.2	28.3
HARWICH	369	17.4	22.1	39.5	20.1	18.4	38.5	18.7	20.3	39.0

**Table 1. Overweight or Obese Children in Grades 1, 4, 7, 10 in Massachusetts School Districts, 2011-2012**

School District	Total number of students screened (N)	Males			Females			Males and Females		
		Over- weight (%)	Obese (%)	Over- weight or Obese (%)	Over- weight (%)	Obese (%)	Over- weight or Obese (%)	Over- weight (%)	Obese (%)	Over- weight or Obese (%)
HATFIELD	132	*	*	33.3	*	*	26.7	13.6	16.7	30.3
HAVERHILL	2,267	15.2	24.8	40.0	16.9	20.8	37.7	16.1	22.8	38.9
HILL VIEW MONTESSORI CHARTER	91	*	*	26.3	*	*	32.1	18.7	11.0	29.7
HILLTOWN CHARTER	53	*	*	*	*	*	*	*	*	*
HINGHAM	1,231	15.8	7.6	23.4	11.8	5.5	17.3	13.9	6.6	20.5
HOLBROOK	360	17.7	24.5	42.2	16.1	21.4	37.5	16.9	23.1	40.0
HOLLISTON	877	24.5	10.1	34.6	21.5	7.4	28.9	23.0	8.8	31.8
HOLYOKE	1,423	16.2	21.1	37.2	18.6	18.8	37.4	17.4	20.0	37.3
HOPEDALE	334	14.9	16.7	31.6	20.0	11.9	31.9	17.4	14.4	31.7
HOPKINTON	1,015	10.1	7.5	17.6	14.6	4.8	19.3	12.4	6.1	18.5
HUDSON	796	15.4	19.4	34.8	15.7	15.0	30.7	15.6	17.2	32.8
HULL #	327	14.8	11.0	25.8	10.3	11.0	21.4	12.8	11.0	23.9
INNOVATION ACADEMY CHARTER	156	13.6	11.4	25.0	*	*	25.0	17.9	7.1	25.0
IPSWICH	452	11.0	8.3	19.3	15.2	6.7	21.9	13.1	7.5	20.6
KING PHILIP REGIONAL	1,247	14.8	12.4	27.2	13.2	9.6	22.7	14.0	11.1	25.1
KIPP ACADEMY LYNN CHARTER	84	*	*	38.7	22.6	26.4	49.1	17.9	27.4	45.2
LABBB COLLABORATIVE	17	*	*	*	*	*	*	*	*	64.7
LAWRENCE	3,688	15.5	31.1	46.6	18.5	28.5	47.0	16.9	29.9	46.8
LAWRENCE FAMILY DEV CHARTER	169	20.8	33.8	54.5	18.5	25.0	43.5	19.5	29.0	48.5
LEE-TYRINGHAM (SCHOOL UNION 29)	252	15.4	15.4	30.8	14.1	13.3	27.4	14.7	14.3	29.0
LEICESTER	477	17.2	15.5	32.8	15.9	15.5	31.4	16.6	15.5	32.1
LENOX	247	17.8	15.0	32.7	14.3	7.1	21.4	15.8	10.5	26.3
LEOMINSTER	1,780	16.7	22.1	38.9	18.0	17.4	35.5	17.4	19.9	37.2

**Table 1. Overweight or Obese Children in Grades 1, 4, 7, 10 in Massachusetts School Districts, 2011-2012**

School District	Total number of students screened (N)	Males			Females			Males and Females		
		Over- weight (%)	Obese (%)	Over- weight or Obese (%)	Over- weight (%)	Obese (%)	Over- weight or Obese (%)	Over- weight (%)	Obese (%)	Over- weight or Obese (%)
LEXINGTON	1,910	14.4	7.3	21.7	9.7	4.8	14.5	12.1	6.1	18.2
LINCOLN-SUDBURY REGIONAL	1,758	13.4	11.4	24.8	13.4	5.4	18.9	13.4	8.5	21.9
LITTLETON	503	13.9	8.6	22.5	14.0	8.1	22.0	13.9	8.3	22.3
LONGMEADOW	664	14.2	9.4	23.6	15.0	9.6	24.6	14.6	9.5	24.1
LOWELL	3,292	19.3	23.0	42.4	14.9	19.0	34.0	17.2	21.1	38.2
LOWELL COMMUNITY CHARTER	178	16.7	23.1	39.7	20.0	19.0	39.0	18.5	20.8	39.3
LOWELL MIDDLESEX ACAD CHARTER	15	*	*	*	*	*	*	*	*	*
LUDLOW	896	21.0	19.2	40.2	21.0	14.4	35.4	21.0	16.7	37.7
LUNENBURG	429	16.9	17.3	34.2	21.6	11.8	33.3	19.1	14.7	33.8
LYNN	3,869	19.1	20.8	39.9	17.1	20.0	37.2	18.1	20.4	38.5
LYNNFIELD	650	18.3	17.1	35.5	16.7	9.6	26.3	17.5	13.4	30.9
MALDEN	1,749	14.0	26.8	40.8	16.0	20.9	36.9	15.0	23.9	38.9
MANCHESTER ESSEX REGIONAL	455	13.9	11.2	25.1	14.7	5.2	19.8	14.3	8.1	22.4
MANSFIELD	1,377	19.5	9.2	28.7	15.3	8.3	23.6	17.4	8.8	26.2
MARBLEHEAD	998	15.1	10.5	25.7	12.6	6.3	18.9	13.9	8.5	22.4
MARLBOROUGH	1,256	17.1	19.4	36.5	15.0	17.0	32.0	16.2	18.3	34.5
MARSHFIELD	1,355	15.2	11.8	27.0	11.8	9.8	21.6	13.5	10.8	24.4
MARTHA'S VINEYARD CHARTER	51	*	*	*	*	*	*	*	*	27.5
MARTHAS VINEYARD (UNION 19)	605	10.7	16.8	27.5	14.7	9.8	24.4	12.7	13.2	26.0
MASCONOMET (AND TRI-TOWN SCHOOL UNION)	1,272	10.5	12.9	23.4	13.0	6.5	19.5	11.8	9.7	21.5
MASHPEE	488	16.1	11.6	27.7	23.2	11.0	34.1	19.7	11.3	30.9
MAYNARD	392	16.9	17.9	34.9	11.2	10.7	21.8	14.0	14.3	28.3
MEDFIELD	863	13.4	7.4	20.8	7.9	4.6	12.5	10.8	6.0	16.8

**Table 1. Overweight or Obese Children in Grades 1, 4, 7, 10 in Massachusetts School Districts, 2011-2012**

School District	Total number of students screened (N)	Males			Females			Males and Females		
		Over- weight (%)	Obese (%)	Over- weight or Obese (%)	Over- weight (%)	Obese (%)	Over- weight or Obese (%)	Over- weight (%)	Obese (%)	Over- weight or Obese (%)
MEDFORD	1,397	16.3	19.2	35.5	17.8	19.3	37.1	17.0	19.3	36.2
MEDIA & TECH CHARTER	56	*	*	50.0	*	*	55.0	*	*	51.8
MEDWAY	766	14.5	10.4	24.9	16.6	8.3	24.9	15.5	9.4	24.9
MELROSE	701	19.3	10.1	29.3	19.2	10.2	29.4	19.3	10.1	29.4
MENDON-UPTON REGIONAL	669	15.0	11.2	26.2	13.4	8.8	22.2	14.2	10.0	24.2
METHUEN	1,936	14.5	17.4	31.9	13.8	14.2	28.0	14.2	15.8	30.0
MIDDLEBOROUGH	977	19.5	17.6	37.1	21.7	14.1	35.9	20.6	16.0	36.5
MILFORD	1,173	18.3	18.8	37.1	14.3	13.2	27.5	16.3	15.9	32.2
MILLBURY	547	12.6	21.7	34.3	15.6	14.8	30.4	14.1	18.3	32.4
MILLIS	439	12.9	15.7	28.6	16.2	9.5	25.7	14.6	12.5	27.1
MILTON	1,057	10.5	8.3	18.7	11.9	7.8	19.7	11.2	8.0	19.2
MINUTEMAN VOC TECH REG	179	23.6	15.4	39.0	*	*	41.1	24.6	15.1	39.7
MOHAWK TRAIL REGIONAL	301	13.9	15.3	29.2	12.7	15.9	28.7	13.3	15.6	28.9
MONSON	359	13.9	17.8	31.7	14.0	14.0	27.9	13.9	15.9	29.8
MONTACHUSETT VOC TECH REG	357	21.3	21.8	43.1	14.2	25.2	39.4	18.2	23.2	41.5
NANTUCKET	394	11.3	22.1	33.3	23.6	15.1	38.7	17.5	18.5	36.0
NARRAGANSETT REGIONAL	409	18.7	25.3	43.9	16.1	15.2	31.3	17.4	20.0	37.4
NASHOBA REGIONAL	980	14.5	11.2	25.8	14.0	8.4	22.4	14.3	9.9	24.2
NASHOBA VALLEY VOC TECH REG	125	23.1	27.7	50.8	18.3	25.0	43.3	20.8	26.4	47.2
NATICK	1,445	14.1	10.4	24.6	13.0	9.6	22.6	13.6	10.0	23.6
NAUSET (SCHOOL UNION 54)	801	16.9	17.5	34.4	13.9	11.1	25.1	15.4	14.1	29.5
NEEDHAM	1,643	12.3	6.0	18.2	9.9	3.9	13.8	11.1	4.9	16.0
NEW BEDFORD	3,377	15.7	21.2	36.9	17.3	19.5	36.8	16.5	20.4	36.9

**Table 1. Overweight or Obese Children in Grades 1, 4, 7, 10 in Massachusetts School Districts, 2011-2012**

School District	Total number of students screened (N)	Males			Females			Males and Females		
		Over- weight (%)	Obese (%)	Over- weight or Obese (%)	Over- weight (%)	Obese (%)	Over- weight or Obese (%)	Over- weight (%)	Obese (%)	Over- weight or Obese (%)
NEWBURYPORT	666	15.5	12.2	27.8	16.9	10.3	27.2	16.2	11.3	27.5
NEWTON	3,465	13.9	8.7	22.6	12.7	7.2	19.9	13.3	7.9	21.2
NORFOLK COUNTY AGR	120	*	*	41.9	20.8	15.6	36.4	20.8	17.5	38.3
NORTH ADAMS	87	*	*	40.5	*	*	28.9	17.2	17.2	34.5
NORTH ANDOVER	1,386	16.5	12.7	29.2	14.0	9.0	23.0	15.2	10.8	26.0
NORTH ATTLEBOROUGH	1,335	16.3	14.5	30.9	16.9	11.8	28.7	16.6	13.2	29.8
NORTH CENTRAL CHARTER ESSENTIAL	87	*	*	38.8	*	*	44.7	20.7	20.7	41.4
NORTH MIDDLESEX REGIONAL	1,067	14.2	16.7	30.9	14.5	13.0	27.5	14.3	14.8	29.1
NORTH READING	769	12.8	12.0	24.9	15.9	11.6	27.6	14.4	11.8	26.3
NORTH RIVER COLLABORATIVE	28	*	*	*	*	*	*	*	*	*
NORTH SHORE VOC TECH REG	114	26.6	26.6	53.1	*	*	32.0	19.3	24.6	43.9
NORTHAMPTON	750	15.4	14.1	29.4	13.4	15.8	29.2	14.4	14.9	29.3
NORTHAMPTON-SMITH VOC	111	15.9	33.3	49.3	26.2	26.2	52.4	19.8	30.6	50.5
NORTHBORO-SOUTHBORO (UNION 3)	1,441	14.6	8.7	23.2	13.6	8.0	21.6	14.1	8.3	22.4
NORTHBRIDGE	756	19.4	18.9	38.3	21.7	12.6	34.3	20.5	15.9	36.4
NORTHEAST METRO VOC TECH REG	317	13.1	33.3	46.4	27.6	24.6	52.2	19.2	29.7	48.9
NORTHERN BERKSHIRE (UNION 43)	95	*	*	37.0	*	*	36.7	17.9	18.9	36.8
NORTHERN BERKSHIRE VOC TECH REG	124	*	*	38.6	31.3	16.4	47.8	23.4	20.2	43.5
NORTON	815	15.8	14.6	30.4	14.6	12.5	27.1	15.2	13.5	28.7
NORWELL	702	16.7	10.3	27.0	15.0	4.4	19.4	15.8	7.3	23.1
NORWOOD	1,039	14.8	17.8	32.7	15.8	14.2	30.0	15.3	16.1	31.4
OLD COLONY VOC TECH REG	137	13.6	26.1	39.8	28.6	22.4	51.0	19.0	24.8	43.8
OLD ROCHESTER (UNION 55)	793	15.8	13.5	29.3	10.3	9.2	19.5	13.2	11.5	24.7



**Table 1. Overweight or Obese Children in Grades 1, 4, 7, 10 in Massachusetts School Districts, 2011-2012**

School District	Total number of students screened (N)	Males			Females			Males and Females		
		Over- weight (%)	Obese (%)	Over- weight or Obese (%)	Over- weight (%)	Obese (%)	Over- weight or Obese (%)	Over- weight (%)	Obese (%)	Over- weight or Obese (%)
OXFORD	525	18.1	20.9	39.0	18.1	12.2	30.3	18.1	16.4	34.5
PALMER	451	19.4	19.8	39.1	18.7	18.7	37.4	19.1	19.3	38.4
PATHFINDER VOC TECH REG	160	17.6	38.2	55.9	*	*	44.8	15.6	36.3	51.9
PEABODY	1,824	21.7	21.4	43.1	18.7	16.8	35.5	20.2	19.1	39.4
PEMBROKE	1,058	22.5	15.0	37.5	18.6	9.8	28.3	20.6	12.5	33.1
PENTUCKET REGIONAL	881	11.4	13.3	24.7	10.6	9.6	20.1	11.0	11.6	22.6
PILGRIM AREA COLLABORATIVE	42	*	*	*	*	*	*	*	*	35.7
PIONEER CHARTER SCHOOL OF SCIENCE	94	*	*	44.7	27.7	25.5	53.2	26.6	22.3	48.9
PIONEER VALLEY CHINESE IMMERSION CHARTER	70	*	*	*	*	*	*	*	*	*
PIONEER VALLEY PERF ARTS CHARTER	133	*	*	41.0	14.9	17.0	31.9	15.8	18.8	34.6
PIONEER VALLEY REGIONAL	325	13.5	12.3	25.8	15.4	15.4	30.9	14.5	13.8	28.3
PITTSFIELD	1,734	13.3	16.8	30.1	17.1	12.8	30.0	15.2	14.9	30.0
PLYMOUTH	2,409	17.2	18.5	35.7	16.1	13.5	29.7	16.7	16.1	32.8
QUABBIN REGIONAL	711	20.5	10.3	30.8	21.9	13.3	35.3	21.2	11.8	33.1
QUABOAG REGIONAL	386	18.6	17.6	36.2	25.8	15.7	41.4	22.3	16.6	38.9
QUINCY	2,581	15.6	18.5	34.1	15.5	13.8	29.4	15.6	16.2	31.8
RALPH C MAHAR REGIONAL	435	12.3	17.2	29.5	12.5	19.2	31.7	12.4	18.2	30.6
RANDOLPH	902	17.5	26.8	44.4	18.9	18.4	37.3	18.2	22.8	41.0
READS COLLABORATIVE	8	*	*	*	*	*	*	*	*	*
REVERE	1,942	22.3	28.3	50.6	18.9	19.9	38.8	20.6	24.1	44.7
RICHMOND	57	*	*	*	*	*	*	*	*	24.6
RIISING TIDE CHARTER	72	*	*	41.9	*	*	41.4	22.2	19.4	41.7
RIVER VALLEY CHARTER	100	*	*	*	*	*	*	*	*	14.0

**Table 1. Overweight or Obese Children in Grades 1, 4, 7, 10 in Massachusetts School Districts, 2011-2012**

School District	Total number of students screened (N)	Males			Females			Males and Females		
		Over- weight (%)	Obese (%)	Over- weight or Obese (%)	Over- weight (%)	Obese (%)	Over- weight or Obese (%)	Over- weight (%)	Obese (%)	Over- weight or Obese (%)
ROCKLAND	639	18.4	18.7	37.1	13.5	18.9	32.3	16.1	18.8	34.9
ROCKPORT	290	16.6	17.9	34.5	9.0	8.3	17.2	12.8	13.1	25.9
SABIS FOXBORO REG'L CHARTER	388	21.9	13.1	35.0	16.6	13.2	29.8	19.1	13.1	32.2
SABIS INTERNATIONAL	440	16.6	23.7	40.3	25.3	18.8	44.1	21.1	21.1	42.3
SALEM	1,183	15.3	23.9	39.2	17.0	18.5	35.6	16.1	21.2	37.4
SALEM ACADEMY CHARTER	96	*	*	35.6	*	*	35.3	11.5	24.0	35.4
SANDWICH	971	14.8	12.2	27.0	13.8	5.8	19.7	14.3	9.2	23.5
SAUGUS	848	13.7	25.7	39.3	15.5	15.3	30.9	14.6	20.4	35.0
SCITUATE	739	22.0	7.9	29.8	14.3	8.1	22.4	18.1	8.0	26.1
SEEKONK	668	14.5	19.9	34.4	18.7	10.7	29.4	16.6	15.3	31.9
SHAKER MOUNTAIN (SCHOOL UNION 70)	2	*	*	*	*	*	*	*	*	*
SHARON	987	14.3	8.3	22.5	13.3	6.8	20.1	13.8	7.5	21.3
SHAWSHEEN VALLEY VOC TECH REG	334	23.4	13.5	37.0	26.1	9.9	35.9	24.6	12.0	36.5
SHREWSBURY	1,771	18.1	13.3	31.4	14.8	9.9	24.7	16.5	11.6	28.1
SILVER LAKE (SCHOOL UNION 31)	911	13.9	11.9	25.8	16.1	9.9	26.0	14.9	11.0	25.9
SO MIDDLESEX VOC TECH REG	156	15.2	26.3	41.4	*	*	40.4	14.7	26.3	41.0
SOMERSET BERKLEY REGIONAL	1,145	20.4	18.7	39.1	17.8	13.6	31.3	19.1	16.2	35.4
SOMERVILLE	1,497	17.9	24.2	42.1	18.8	24.6	43.4	18.3	24.4	42.7
SOUTH HADLEY	491	19.6	12.6	32.2	16.1	11.9	28.0	17.7	12.2	29.9
SOUTH SHORE CHARTER	130	17.5	20.6	38.1	*	*	28.4	17.7	15.4	33.1
SOUTH SHORE EDUCATIONAL COLLAB.	29	*	*	*	*	*	*	*	*	72.4
SOUTH SHORE VOC TECH REG #	147	16.9	30.1	47.0	25.0	28.1	53.1	20.4	29.3	49.7
SOUTHBRIDGE	666	27.0	27.3	54.4	25.4	17.7	43.1	26.3	22.8	49.1

**Table 1. Overweight or Obese Children in Grades 1, 4, 7, 10 in Massachusetts School Districts, 2011-2012**

School District	Total number of students screened (N)	Males			Females			Males and Females		
		Over- weight (%)	Obese (%)	Over- weight or Obese (%)	Over- weight (%)	Obese (%)	Over- weight or Obese (%)	Over- weight (%)	Obese (%)	Over- weight or Obese (%)
SOUTHEASTERN VOC TECH REG	270	17.1	34.2	51.4	16.1	27.4	43.5	16.7	31.1	47.8
SOUTHERN BERKSHIRE REGIONAL	235	14.2	15.9	30.1	13.9	17.2	31.1	14.0	16.6	30.6
SOUTHERN WORCESTER CTY VOC TECH	263	9.9	23.6	33.5	18.5	17.3	35.8	12.5	21.7	34.2
SOUTHWICK-TOLLAND REGIONAL	490	13.5	20.0	33.5	9.4	17.6	26.9	11.4	18.8	30.2
SPENCER-E BROOKFIELD REGIONAL	576	17.1	16.5	33.5	16.1	12.9	29.0	16.7	14.9	31.6
SPIRIT OF KNOWLEDGE ACADEMY CHARTER	78	*	*	54.8	*	*	34.0	17.9	24.4	42.3
SPRINGFIELD	6,463	16.7	24.4	41.1	19.5	22.6	42.1	18.1	23.5	41.6
STONEHAM	738	16.7	18.0	34.6	16.4	10.5	26.8	16.5	14.4	30.9
STOUGHTON	1,056	15.6	19.6	35.2	19.0	16.2	35.3	17.2	18.0	35.2
STURGIS CHARTER	208	11.6	15.1	26.7	18.0	12.3	30.3	15.4	13.5	28.8
SUTTON	424	15.1	10.0	25.1	13.2	8.8	22.0	14.2	9.4	23.6
SWAMPSCOTT (INCLUDING NAHANT)	709	17.2	14.2	31.4	14.9	8.9	23.8	16.1	11.6	27.6
SWANSEA	604	13.9	22.5	36.4	20.0	17.9	37.9	16.7	20.4	37.1
TANTASQUA (SCHOOL UNION 61)	1,110	15.1	14.5	29.6	13.8	13.8	27.5	14.4	14.1	28.6
TAUNTON	2,204	17.1	19.7	36.8	17.2	19.4	36.6	17.2	19.6	36.7
TEWKSBURY	1,168	18.0	21.6	39.6	16.6	16.2	32.8	17.3	18.9	36.2
THE EDUCATION COOPERATIVE	17	*	*	*	*	*	*	*	*	*
TRI COUNTY VOC TECH REG	253	16.9	24.3	41.2	14.3	26.7	41.0	15.8	25.3	41.1
TRITON REGIONAL	902	15.3	11.9	27.2	14.4	12.1	26.5	14.9	12.0	26.8
TYNGSBOROUGH	568	17.9	11.9	29.9	15.7	8.7	24.3	16.7	10.2	26.9
UXBRIDGE	574	21.1	13.5	34.6	19.3	13.3	32.6	20.2	13.4	33.6
WAKEFIELD	875	19.0	9.6	28.6	20.1	8.6	28.7	19.5	9.1	28.7
WALPOLE	1,210	13.6	12.4	26.0	11.3	6.8	18.0	12.4	9.5	21.9

**Table 1. Overweight or Obese Children in Grades 1, 4, 7, 10 in Massachusetts School Districts, 2011-2012**

School District	Total number of students screened (N)	Males			Females			Males and Females		
		Over- weight (%)	Obese (%)	Over- weight or Obese (%)	Over- weight (%)	Obese (%)	Over- weight or Obese (%)	Over- weight (%)	Obese (%)	Over- weight or Obese (%)
WALTHAM	1,403	19.5	22.7	42.2	18.2	16.7	34.9	18.9	19.9	38.8
WARE	381	13.5	27.5	40.9	19.1	19.7	38.8	16.3	23.6	39.9
WAREHAM	832	17.3	21.4	38.7	20.0	20.7	40.6	18.6	21.0	39.7
WATERTOWN	782	17.9	16.2	34.2	16.0	18.9	34.9	17.0	17.5	34.5
WAYLAND	762	13.9	8.1	22.0	7.9	2.7	10.6	11.0	5.5	16.5
WEBSTER	128	*	*	31.3	32.8	15.6	48.4	28.9	10.9	39.8
WELLESLEY	1,497	13.4	8.0	21.5	10.0	4.5	14.5	11.8	6.3	18.0
WEST BRIDGEWATER	388	18.1	18.1	36.2	18.5	9.0	27.5	18.3	13.7	32.0
WEST SPRINGFIELD	1,113	17.3	20.0	37.3	17.0	18.4	35.4	17.2	19.2	36.4
WESTBOROUGH	1,005	18.8	8.8	27.6	11.8	7.7	19.5	15.4	8.3	23.7
WESTFIELD	1,583	15.8	14.1	29.9	17.0	13.6	30.6	16.4	13.9	30.3
WESTFORD	1,604	16.4	9.1	25.5	13.7	5.5	19.2	15.1	7.4	22.5
WESTON	716	9.9	8.3	18.2	8.2	5.5	13.7	9.1	7.0	16.1
WESTPORT	518	23.2	17.7	40.9	16.3	13.6	29.9	19.7	15.6	35.3
WESTWOOD	926	13.5	11.0	24.5	12.1	4.7	16.7	12.7	7.8	20.5
WEYMOUTH	1,995	15.4	20.5	35.8	17.8	15.1	32.9	16.6	17.8	34.4
WHITMAN-HANSON REGIONAL	1,270	18.0	19.7	37.7	21.8	14.4	36.3	19.8	17.2	37.0
WHITTIER VOC TECH REG	307	20.1	22.5	42.6	21.7	18.8	40.6	20.8	20.8	41.7
WILLIAMSTOWN-LANESBOROUGH (SCHOOL UNION 71)	339	14.5	8.1	22.5	12.7	7.8	20.5	13.6	8.0	21.5
WILMINGTON	1,034	13.5	19.6	33.1	17.5	10.9	28.4	15.5	15.3	30.8
WINCHENDON	443	15.8	24.9	40.7	16.2	13.5	29.7	16.0	19.2	35.2
WINCHESTER	1,289	12.6	9.7	22.4	8.6	7.2	15.8	10.6	8.5	19.0
WINTHROP	544	15.5	22.6	38.1	17.6	15.1	32.6	16.5	18.8	35.3

**Table 1. Overweight or Obese Children in Grades 1, 4, 7, 10 in Massachusetts School Districts, 2011-2012**

School District	Total number of students screened (N)	Males			Females			Males and Females		
		Over- weight (%)	Obese (%)	Over- weight or Obese (%)	Over- weight (%)	Obese (%)	Over- weight or Obese (%)	Over- weight (%)	Obese (%)	Over- weight or Obese (%)
WOBURN	1,397	14.7	19.8	34.4	16.4	17.1	33.6	15.5	18.5	34.0
WORCESTER	6,066	17.3	18.9	36.2	16.6	17.6	34.2	16.9	18.3	35.2

Note: Data that did not pass data quality tests were excluded from the analysis.

Definitions: *Underweight* – BMI for age percentile < 5<sup>th</sup> percentile; *Healthy weight* – BMI for age percentile between 5<sup>th</sup> and 85<sup>th</sup> percentile; *Overweight* – BMI for age percentile between 85<sup>th</sup> and 95<sup>th</sup> percentile; *Obese* – BMI for age percentile ≥ 95<sup>th</sup> percentile.

\* Data is suppressed due to the small number of individuals in this cell.

# There is an unusual variation between this year's data and the prior year's data.

**Table 2. Body Mass Index Screening Results for Children in Grade 1 in Massachusetts School Districts, 2011-2012**

School District	Total number of students screened (N)	Males				Females				Males and Females
		Healthy Weight (%)	Over-weight (%)	Obese (%)	Over-weight or Obese (%)	Healthy Weight (%)	Over-weight (%)	Obese (%)	Over-weight or Obese (%)	Over-weight or Obese (%)
<b>TOTAL</b>	<b>62,966</b>	<b>68.9</b>	<b>14.7</b>	<b>13.7</b>	<b>28.4</b>	<b>70.1</b>	<b>14.5</b>	<b>12.6</b>	<b>27.1</b>	<b>27.8</b>
ABBY KELLEY FOSTER REG CHARTER ACCEPT EDUCATION COLLABORATIVE	110	50.8	22.0	27.1	49.2	54.9	23.5	19.6	43.1	46.4
	*	*	*	*	*					*
ACTON-BOXBOROUGH REGIONAL	387	83.7	*	*	14.8	79.1	13.6	6.8	20.4	17.6
ACUSHNET	104	72.7	*	*	25.5	63.3	*	*	36.7	30.8
ADAMS-CHESHIRE REGIONAL	101	71.4	*	*	26.5	69.2	*	*	26.9	26.7
ALMA DEL MAR CHARTER SCHOOL	15	*	*	*	*	*	*	*	*	*
AMESBURY	170	71.9	*	*	24.7	79.0	*	*	21.0	22.9
AMHERST-PELHAM (SCHL UNION 26)	150	78.6	*	*	20.2	74.2	*	*	24.2	22.0
ANDOVER	458	74.9	14.5	7.9	22.5	80.5	*	*	18.6	20.5
ARLINGTON	443	83.0	*	*	13.7	86.6	*	*	12.1	12.9
ASHBURNHAM-WESTMINSTER REG	163	74.4	*	*	21.8	74.1	*	*	22.4	22.1
ASHLAND	177	73.9	*	*	14.8	74.2	*	*	13.5	14.1
ATHOL-ROYALSTON REGIONAL	110	65.1	17.5	17.5	34.9	68.1	*	*	29.8	32.7
ATTLEBORO	413	70.5	16.1	12.0	28.1	66.3	14.8	15.8	30.6	29.3
AUBURN	174	78.8	*	*	21.2	74.3	*	*	22.9	21.8
AVON	55	67.7	*	*	32.3	66.7	*	*	*	30.9
AYER SHIRLEY REGIONAL	158	69.6	15.2	12.7	27.8	68.4	13.9	13.9	27.8	27.8
BARNSTABLE	374	71.3	19.3	8.2	27.5	67.5	15.8	14.3	30.0	28.9

**Table 2. Body Mass Index Screening Results for Children in Grade 1 in Massachusetts School Districts, 2011-2012**

School District	Total number of students screened (N)	Males				Females				Males and Females
		Healthy Weight (%)	Over-weight (%)	Obese (%)	Over-weight or Obese (%)	Healthy Weight (%)	Over-weight (%)	Obese (%)	Over-weight or Obese (%)	Over-weight or Obese (%)
BEDFORD	166	75.3	*	*	22.5	79.2	*	*	16.9	19.9
BELCHERTOWN	200	79.2	*	*	20.8	77.7	*	*	22.3	21.5
BELLINGHAM	178	73.9	*	*	21.6	73.3	*	*	17.8	19.7
BELMONT	309	73.6	*	*	21.5	80.8	*	*	15.1	18.4
BERKSHIRE HILLS REGIONAL	88	82.5	*	*	*	77.1	*	*	22.9	18.2
BERLIN BOYLSTON (SCHL UNION 60)	67	83.8	*	*	*	70.0	*	*	*	22.4
BEVERLY	334	71.7	11.6	14.5	26.0	70.8	9.9	14.9	24.8	25.4
BI-COUNTY COLLABORATIVE (BICO)	*	*	*	*	*					*
BILLERICA	405	70.6	13.9	13.9	27.8	67.0	15.6	14.2	29.8	28.9
BLACKSTONE-MILLVILLE REGIONAL	128	70.0	*	*	28.3	64.7	*	*	35.3	32.0
BOSTON	3,747	59.9	16.7	20.6	37.3	59.1	17.2	20.6	37.8	37.6
BOSTON RENAISSANCE CHARTER	137	56.8	17.3	19.8	37.0	55.4	*	*	32.1	35.0
BOURNE	171	75.9	*	*	20.5	69.3	*	*	27.3	24.0
BRAINTREE	431	72.6	16.1	9.1	25.2	74.6	13.4	9.5	22.9	24.1
BRIDGEWATER-RAYNHAM REGIONAL	413	73.8	11.0	12.4	23.3	70.0	18.2	7.9	26.1	24.7
BROCKTON	1,212	63.8	15.7	19.6	35.3	62.6	16.6	17.8	34.5	34.9
BROOKLINE	531	79.3	*	*	16.2	80.8	10.6	3.8	14.3	15.3
BURLINGTON	208	74.1	9.3	12.0	21.3	74.0	*	*	20.0	20.7
CAMBRIDGE	486	61.9	17.9	18.3	36.2	69.4	13.8	13.1	26.9	31.1
CANTON	228	79.1	9.1	9.1	18.2	75.4	12.7	10.2	22.9	20.6
CAPE COD COLLABORATIVE	*	*	*	*	*	*	*	*	*	*

**Table 2. Body Mass Index Screening Results for Children in Grade 1 in Massachusetts School Districts, 2011-2012**

School District	Total number of students screened (N)	Males				Females				Males and Females
		Healthy Weight (%)	Over-weight (%)	Obese (%)	Over-weight or Obese (%)	Healthy Weight (%)	Over-weight (%)	Obese (%)	Over-weight or Obese (%)	Over-weight or Obese (%)
CAPS EDUCATIONAL COLLAB.	*	*	*	*	*	*	*	*	*	*
CARVER	137	76.7	*	*	23.3	76.6	*	*	22.1	22.6
CENTRAL BERKSHIRE REGIONAL	99	77.1	*	*	22.9	76.5	*	*	21.6	22.2
CHATHAM	54	76.0	*	*	*	75.9	*	*	*	24.1
CHELMSFORD	365	73.1	13.7	9.1	22.9	75.3	13.7	7.9	21.6	22.2
CHICOPEE	509	60.8	19.4	17.2	36.6	67.2	17.4	14.5	32.0	34.4
CLINTON	135	56.3	18.3	23.9	42.3	62.5	*	*	37.5	40.0
COHASSET	130	90.0	*	*	*	91.4	*	*	*	8.5
CONCORD-CARLISLE REGIONAL	284	88.2	*	*	11.1	84.3	*	*	12.1	11.6
CONSERVATORY LAB CHARTER	29	100.0	*	*	*	*	*	*	*	*
DANVERS	275	70.8	16.8	7.3	24.1	67.4	18.1	13.0	31.2	27.6
DARTMOUTH	269	69.1	12.1	16.8	28.9	71.7	13.3	9.2	22.5	26.0
DEDHAM	204	62.5	18.3	16.3	34.6	66.0	15.0	17.0	32.0	33.3
DENNIS-YARMOUTH REGIONAL	191	67.0	13.6	18.4	32.0	59.1	22.7	18.2	40.9	36.1
DIGHTON-REHOBOTH REGIONAL	225	78.1	*	*	19.0	80.8	8.3	9.2	17.5	18.2
DOUGLAS	96	82.9	*	*	*	80.3	*	*	*	14.6
DOVER-SHERBORN (SCHL UNION 50)	135	83.6	*	*	14.9	80.9	*	*	14.7	14.8
DRACUT	299	67.9	15.5	15.5	31.0	70.2	13.0	16.0	29.0	30.1
DUDLEY-CHARLTON REGIONAL	347	68.1	20.0	11.3	31.3	68.4	17.6	12.3	29.9	30.5
DUXBURY	197	78.8	8.8	10.6	19.5	69.0	*	*	26.2	22.3
EAST BRIDGEWATER	168	76.5	*	*	23.5	74.7	*	*	21.8	22.6



**Table 2. Body Mass Index Screening Results for Children in Grade 1 in Massachusetts School Districts, 2011-2012**

School District	Total number of students screened (N)	Males				Females				Males and Females
		Healthy Weight (%)	Over-weight (%)	Obese (%)	Over-weight or Obese (%)	Healthy Weight (%)	Over-weight (%)	Obese (%)	Over-weight or Obese (%)	Over-weight or Obese (%)
EAST LONGMEADOW	198	72.7	14.5	10.9	25.5	72.7	*	*	27.3	26.3
EASTHAMPTON	108	50.0	31.7	18.3	50.0	56.3	*	*	41.7	46.3
EASTON	267	82.4	*	*	17.6	78.6	9.9	9.9	19.8	18.7
EDWARD BROOKE CHARTER (ALL CAMPUSES)	116	66.7	*	*	28.1	67.8	*	*	30.5	29.3
ERVING (SCHOOL UNION 28)	57	71.0	*	*	*	84.6	*	*	*	17.5
FAIRHAVEN	158	65.1	*	*	31.3	58.7	17.3	17.3	34.7	32.9
FALL RIVER	833	63.6	17.3	16.1	33.4	60.2	17.3	18.8	36.1	34.7
FALMOUTH	326	64.4	19.6	14.1	33.7	69.3	17.2	11.7	28.8	31.3
FARMINGTON RIVER REGIONAL	20	*	*	*	*	100.0	*	*	*	*
FITCHBURG	446	59.9	15.9	22.0	37.9	61.2	20.6	17.8	38.3	38.1
FOXBOROUGH	168	66.7	12.8	14.1	26.9	76.7	*	*	22.2	24.4
FRAMINGHAM	663	65.4	14.0	18.3	32.3	67.4	15.4	15.7	31.0	31.7
FREETOWN-LAKEVILLE REGIONAL	210	77.3	10.0	12.7	22.7	76.0	*	*	22.0	22.4
FRONTIER (SCHOOL UNION 38)	106	90.2	*	*	*	76.4	*	*	21.8	15.1
GARDNER	167	71.4	11.9	14.3	26.2	68.7	*	*	22.9	24.6
GATEWAY REGIONAL	72	55.6	*	*	41.7	66.7	*	*	27.8	34.7
GEORGETOWN	113	84.5	*	*	*	85.5	*	*	*	14.2
GLOUCESTER	230	66.4	19.5	10.9	30.5	61.8	19.6	17.6	37.3	33.5
GRAFTON	245	71.1	13.2	9.6	22.8	76.3	*	*	18.3	20.4
GRANBY	62	71.8	*	*	25.6	73.9	*	*	*	25.8
GROTON-DUNSTABLE REGIONAL	155	83.0	*	*	15.9	77.6	*	*	19.4	17.4

**Table 2. Body Mass Index Screening Results for Children in Grade 1 in Massachusetts School Districts, 2011-2012**

School District	Total number of students screened (N)	Males				Females				Males and Females
		Healthy Weight (%)	Over-weight (%)	Obese (%)	Over-weight or Obese (%)	Healthy Weight (%)	Over-weight (%)	Obese (%)	Over-weight or Obese (%)	Over-weight or Obese (%)
HADLEY	43	80.0	*	*	*	69.6	*	*	*	25.6
HAMILTON-WENHAM REGIONAL	134	73.3	*	*	25.0	74.3	*	*	21.6	23.1
HAMPDEN-WILBRAHAM REGIONAL	205	78.1	*	*	21.0	71.0	*	*	26.0	23.4
HAMPSHIRE (SCHOOL UNION 66)	117	69.8	*	*	25.4	74.1	*	*	25.9	25.6
HARWICH	110	63.0	*	*	37.0	66.1	*	*	33.9	35.5
HATFIELD	34	78.9	*	*	*	73.3	*	*	*	*
HAVERHILL	555	61.2	15.5	20.9	36.3	61.4	17.3	19.1	36.5	36.4
HILL VIEW MONTESSORI CHARTER	30	73.3	*	*	*	80.0	*	*	*	*
HILLTOWN CHARTER	18	100.0	*	*	*	*	*	*	*	*
HINGHAM	342	79.7	*	*	17.6	78.7	*	*	16.8	17.3
HOLBROOK	93	61.7	*	*	38.3	63.0	*	*	34.8	36.6
HOLLISTON	219	65.2	23.2	10.7	33.9	62.6	*	*	34.6	34.2
HOLYOKE	347	67.1	17.1	14.1	31.2	65.0	14.1	16.4	30.5	30.8
HOPEDALE	87	70.6	*	*	27.5	75.0	*	*	*	26.4
HOPKINTON	253	86.6	*	*	10.1	85.1	*	*	12.7	11.5
HUDSON	235	66.9	15.3	16.9	32.3	65.8	10.8	18.0	28.8	30.6
HULL #	69	76.2	*	*	*	74.1	*	*	*	23.2
IPSWICH	132	76.1	*	*	19.7	80.3	*	*	*	17.4
KING PHILIP REGIONAL	212	79.3	*	*	19.8	86.8	*	*	13.2	17.0
LAWRENCE	1,005	50.8	14.2	33.0	47.1	50.2	19.2	27.4	46.6	46.9
LAWRENCE FAMILY DEV CHARTER	55	*	*	*	61.5	48.3	*	*	48.3	54.5

**Table 2. Body Mass Index Screening Results for Children in Grade 1 in Massachusetts School Districts, 2011-2012**

School District	Total number of students screened (N)	Males				Females				Males and Females
		Healthy Weight (%)	Over-weight (%)	Obese (%)	Over-weight or Obese (%)	Healthy Weight (%)	Over-weight (%)	Obese (%)	Over-weight or Obese (%)	Over-weight or Obese (%)
LEE-TYRINGHAM (SCHOOL UNION 29)	47	50.0	*	*	50.0	60.0	*	*	40.0	44.7
LEICESTER	93	77.3	*	*	*	65.3	*	*	30.6	25.8
LENOX	53	57.1	*	*	35.7	80.0	*	*	*	28.3
LEOMINSTER	439	64.5	20.5	11.5	32.1	67.8	13.2	16.6	29.8	31.0
LEXINGTON	480	78.0	13.1	6.1	19.2	78.7	11.1	5.5	16.6	17.9
LINCOLN-SUDBURY REGIONAL	434	79.0	11.6	8.0	19.6	82.4	*	*	16.7	18.2
LITTLETON	138	90.1	*	*	*	77.2	*	*	22.8	15.2
LONGMEADOW	180	76.8	*	*	23.2	75.3	*	*	23.5	23.3
LOWELL	1,064	61.3	17.7	17.7	35.5	67.2	13.4	16.8	30.2	33.0
LOWELL COMMUNITY CHARTER	93	53.3	*	*	44.4	64.6	*	*	35.4	39.8
LUDLOW	195	61.5	20.9	16.5	37.4	63.5	*	*	36.5	36.9
LUNENBURG	103	77.0	*	*	16.4	71.4	*	*	23.8	19.4
LYNN	1,190	58.1	17.1	21.2	38.3	61.7	16.0	19.1	35.1	36.7
LYNNFIELD	150	68.2	*	*	30.7	77.4	*	*	17.7	25.3
MALDEN	472	65.1	9.6	19.3	28.9	60.5	12.1	23.8	35.9	32.2
MANCHESTER ESSEX REGIONAL	105	82.3	*	*	*	79.1	*	*	*	16.2
MANSFIELD	289	76.4	*	*	22.3	79.5	*	*	18.9	20.8
MARBLEHEAD	243	75.4	13.5	8.7	22.2	78.6	*	*	19.7	21.0
MARLBOROUGH	388	67.2	15.2	14.2	29.4	67.9	13.0	15.8	28.8	29.1
MARSHFIELD	322	68.7	16.3	10.2	26.5	81.4	9.6	6.4	16.0	21.4
MARTHAS VINEYARD (UNION 19)	146	78.6	*	*	18.6	73.7	*	*	25.0	21.9

**Table 2. Body Mass Index Screening Results for Children in Grade 1 in Massachusetts School Districts, 2011-2012**

School District	Total number of students screened (N)	Males				Females				Males and Females
		Healthy Weight (%)	Over-weight (%)	Obese (%)	Over-weight or Obese (%)	Healthy Weight (%)	Over-weight (%)	Obese (%)	Over-weight or Obese (%)	Over-weight or Obese (%)
MARTHA'S VINEYARD CHARTER MASCONOMET (AND TRI-TOWN SCHOOL UNION)	14	*	*	*	*	*	*	*	*	*
	253	80.5	*	*	17.3	74.2	11.7	10.8	22.5	19.8
MASHPEE	146	80.3	*	*	19.7	78.8	*	*	21.3	20.5
MAYNARD	103	67.3	*	*	32.7	78.4	*	*	19.6	26.2
MEDFIELD	180	86.6	*	*	*	81.6	*	*	16.3	13.9
MEDFORD	385	72.0	9.2	15.0	24.2	63.5	14.6	18.0	32.6	28.1
MEDWAY	163	79.2	*	*	20.8	72.1	*	*	26.7	23.9
MELROSE	257	77.7	*	*	20.0	74.0	*	*	22.8	21.4
MENDON-UPTON REGIONAL	147	76.1	*	*	22.4	82.5	*	*	16.3	19.0
METHUEN	514	69.2	10.7	6.7	17.4	75.1	8.8	6.9	15.7	16.5
MIDDLEBOROUGH	261	61.7	21.1	17.2	38.3	66.2	20.3	13.5	33.8	36.0
MILFORD	333	61.5	14.2	19.5	33.7	73.8	10.4	14.6	25.0	29.4
MILLBURY	148	78.3	*	*	20.3	70.9	13.9	12.7	26.6	23.6
MILLIS	109	70.9	*	*	29.1	70.4	*	*	25.9	27.5
MILTON	304	84.4	*	*	12.2	79.0	10.2	7.0	17.2	14.8
MOHAWK TRAIL REGIONAL	69	63.0	*	*	37.0	71.4	*	*	28.6	31.9
MONSON	74	65.7	*	*	34.3	66.7	*	*	33.3	33.8
NANTUCKET	105	66.7	*	*	33.3	70.4	*	*	27.8	30.5
NARRAGANSETT REGIONAL	82	59.5	*	*	40.5	67.5	*	*	32.5	36.6
NASHOBA REGIONAL	245	76.6	14.2	7.1	21.3	79.8	*	*	19.2	20.4
NATICK	394	76.4	13.1	6.8	19.9	79.8	9.9	7.4	17.2	18.5

**Table 2. Body Mass Index Screening Results for Children in Grade 1 in Massachusetts School Districts, 2011-2012**

School District	Total number of students screened (N)	Males				Females				Males and Females
		Healthy Weight (%)	Over-weight (%)	Obese (%)	Over-weight or Obese (%)	Healthy Weight (%)	Over-weight (%)	Obese (%)	Over-weight or Obese (%)	Over-weight or Obese (%)
NAUSET (SCHOOL UNION 54)	186	64.8	11.4	21.6	33.0	77.6	*	*	19.4	25.8
NEEDHAM	387	84.5	6.2	5.2	11.4	86.1	*	*	11.3	11.4
NEW BEDFORD	1,104	66.3	17.6	14.4	32.0	67.1	15.7	16.3	32.0	32.0
NEWBURYPORT	183	83.2	*	*	15.8	73.9	11.4	12.5	23.9	19.7
NEWTON	906	78.8	11.2	6.2	17.4	81.4	8.9	7.5	16.4	16.9
NORTH ANDOVER	319	75.0	15.2	9.8	25.0	80.0	*	*	17.4	21.3
NORTH ATTLEBOROUGH	323	74.3	14.4	9.6	24.0	75.6	13.5	9.6	23.1	23.5
NORTH MIDDLESEX REGIONAL	228	73.6	12.3	12.3	24.5	76.2	*	*	18.0	21.1
NORTH READING	195	81.8	*	*	15.9	78.5	*	*	19.6	17.9
NORTH RIVER COLLABORATIVE	*	*	*	*	*	*	*	*	*	*
NORTHAMPTON	198	71.0	16.8	11.2	28.0	59.3	19.8	18.7	38.5	32.8
NORTHBORO-SOUTHBORO (UNION 3)	302	77.6	12.4	6.2	18.6	73.8	9.9	9.9	19.9	19.2
NORTHBRIDGE	197	65.8	23.4	9.9	33.3	62.8	18.6	15.1	33.7	33.5
NORTHERN BERKSHIRE (UNION 43)	25	*	*	*	*	*	*	*	*	*
NORTON	197	67.7	15.2	14.1	29.3	68.4	*	*	27.6	28.4
NORWELL	152	72.1	*	*	25.0	75.0	*	*	21.4	23.0
NORWOOD	284	72.8	12.9	14.3	27.2	68.6	15.3	13.9	29.2	28.2
OLD ROCHESTER (UNION 55)	188	77.5	10.8	11.8	22.5	84.9	*	*	14.0	18.6
OXFORD	147	67.1	14.5	14.5	28.9	70.4	*	*	26.8	27.9
PALMER	114	60.6	19.7	18.2	37.9	58.3	*	*	39.6	38.6
PEABODY	480	56.2	21.5	19.0	40.5	65.5	13.4	17.2	30.7	35.6

**Table 2. Body Mass Index Screening Results for Children in Grade 1 in Massachusetts School Districts, 2011-2012**

School District	Total number of students screened (N)	Males				Females				Males and Females
		Healthy Weight (%)	Over-weight (%)	Obese (%)	Over-weight or Obese (%)	Healthy Weight (%)	Over-weight (%)	Obese (%)	Over-weight or Obese (%)	Over-weight or Obese (%)
PEMBROKE	244	70.4	15.2	12.8	28.0	67.2	16.0	13.4	29.4	28.7
PENTUCKET REGIONAL	200	76.5	11.3	9.6	20.9	71.8	*	*	21.2	21.0
PILGRIM AREA COLLABORATIVE	*	*	*	*	*	*	*	*	*	*
PIONEER VALLEY CHINESE IMMERSION CHARTER	44	95.0	*	*	*	83.3	*	*	*	*
PIONEER VALLEY REGIONAL	66	77.8	*	*	*	80.0	*	*	*	19.7
PITTSFIELD	445	69.9	10.0	17.5	27.5	73.1	13.0	12.0	25.0	26.3
PLYMOUTH	596	69.0	17.1	11.8	28.9	73.2	12.8	12.8	25.7	27.5
QUABBIN REGIONAL	172	80.2	*	*	19.8	65.9	*	*	33.0	26.7
QUABOAG REGIONAL	105	69.2	*	*	30.8	69.8	*	*	28.3	29.5
QUINCY	733	64.7	14.6	17.3	31.8	69.9	17.7	9.1	26.8	29.3
RALPH C MAHAR REGIONAL	95	75.0	*	*	25.0	72.3	*	*	27.7	26.3
RANDOLPH	208	57.4	15.7	24.3	40.0	71.0	14.0	10.8	24.7	33.2
READS COLLABORATIVE	*	*	*	*	*	*	*	*	*	*
REVERE	549	51.4	20.3	27.9	48.2	58.6	14.7	22.7	37.4	42.8
RICHMOND	12	*	*	*	*	*	*	*	*	*
RIVER VALLEY CHARTER	33	93.3	*	*	*	83.3	*	*	*	*
ROCKLAND	162	62.5	17.0	14.8	31.8	59.5	*	*	35.1	33.3
ROCKPORT	58	64.0	*	*	*	78.8	*	*	*	24.1
SABIS FOXBORO REG'L CHARTER	115	63.0	*	*	29.6	82.0	*	*	*	20.9
SABIS INTERNATIONAL	81	65.1	*	*	34.9	76.3	*	*	*	28.4
SALEM	318	68.1	15.3	16.7	31.9	69.5	16.1	13.2	29.3	30.5

**Table 2. Body Mass Index Screening Results for Children in Grade 1 in Massachusetts School Districts, 2011-2012**

School District	Total number of students screened (N)	Males				Females				Males and Females
		Healthy Weight (%)	Over-weight (%)	Obese (%)	Over-weight or Obese (%)	Healthy Weight (%)	Over-weight (%)	Obese (%)	Over-weight or Obese (%)	Over-weight or Obese (%)
SANDWICH	247	70.8	13.8	12.3	26.2	83.8	*	*	13.7	20.2
SAUGUS	216	64.8	15.7	13.9	29.6	75.0	9.3	12.0	21.3	25.5
SCITUATE	212	72.3	*	*	25.7	67.6	*	*	29.7	27.8
SEEKONK	152	66.2	*	*	33.8	60.3	17.9	20.5	38.5	36.2
SHAKER MOUNTAIN (SCHOOL UNION 70)	*	*	*	*	*	*	*	*	*	*
SHARON	201	77.7	*	*	19.1	80.4	*	*	16.8	17.9
SHREWSBURY	423	72.1	17.9	7.0	24.9	74.2	12.9	8.8	21.6	23.4
SILVER LAKE (SCHOOL UNION 31)	240	76.3	*	*	17.8	78.7	*	*	21.3	19.6
SOMERSET BERKLEY REGIONAL	286	69.1	13.8	15.1	28.9	70.9	9.0	16.4	25.4	27.3
SOMERVILLE	378	61.8	14.7	22.0	36.6	58.3	13.9	26.2	40.1	38.4
SOUTH HADLEY	139	75.0	*	*	19.6	66.3	14.5	12.0	26.5	23.7
SOUTH SHORE CHARTER	40	68.8	*	*	*	79.2	*	*	*	25.0
SOUTH SHORE EDUCATIONAL COLLAB.	-	*	*	*	*					*
SOUTHBRIDGE	219	32.5	42.3	23.6	65.9	54.2	29.2	16.7	45.8	57.1
SOUTHERN BERKSHIRE REGIONAL	86	86.0	*	*	*	79.1	*	*	*	15.1
SOUTHWICK-TOLLAND REGIONAL	108	72.2	*	*	27.8	68.5	*	*	25.9	26.9
SPENCER-E BROOKFIELD REGIONAL	168	64.1	*	*	32.6	73.7	*	*	25.0	29.2
SPRINGFIELD	2,011	62.6	13.8	20.0	33.8	61.3	17.1	19.3	36.4	35.1
STONEHAM	157	79.2	*	*	19.5	75.0	*	*	22.5	21.0
STOUGHTON	257	77.9	12.3	8.2	20.5	71.9	17.0	8.9	25.9	23.3
SUTTON	123	79.7	*	*	20.3	78.0	*	*	20.3	20.3

**Table 2. Body Mass Index Screening Results for Children in Grade 1 in Massachusetts School Districts, 2011-2012**

School District	Total number of students screened (N)	Males				Females				Males and Females
		Healthy Weight (%)	Over-weight (%)	Obese (%)	Over-weight or Obese (%)	Healthy Weight (%)	Over-weight (%)	Obese (%)	Over-weight or Obese (%)	Over-weight or Obese (%)
SWAMPSCOTT (INCLUDING NAHANT)	188	68.9	16.0	9.4	25.5	74.4	*	*	24.4	25.0
SWANSEA	141	68.1	*	*	27.8	69.6	*	*	27.5	27.7
TANTASQUA (SCHOOL UNION 61)	248	66.1	17.7	12.1	29.8	66.9	16.9	12.9	29.8	29.8
TAUNTON	629	63.6	19.3	15.3	34.6	65.2	19.2	14.9	34.1	34.3
TEWKSBURY	280	63.6	14.9	18.8	33.8	69.0	15.9	13.5	29.4	31.8
WESTPORT	119	67.3	*	*	32.7	68.8	*	*	31.3	31.9
WESTWOOD	222	78.6	8.9	10.7	19.6	82.7	*	*	13.6	16.7
WEYMOUTH	531	72.9	12.1	12.1	24.2	65.5	16.7	14.3	31.0	27.5
WHITMAN-HANSON REGIONAL WILLIAMSTOWN-LANESBOROUGH (SCHOOL UNION 71)	324 51	66.0 76.2	18.3 *	14.7 *	33.0 *	69.9 83.3	20.3 *	9.0 *	29.3 *	31.5 19.6
WILMINGTON	257	65.4	16.9	16.2	33.1	68.5	19.7	11.0	30.7	31.9
WINCHENDON	104	54.4	22.8	21.1	43.9	72.3	*	*	25.5	35.6
WINCHESTER	367	82.0	9.3	8.2	17.5	88.6	*	*	9.8	13.6
WINTHROP	137	67.1	*	*	25.7	71.6	*	*	23.9	24.8
WOBURN	347	67.3	13.7	17.9	31.5	72.6	12.3	14.5	26.8	29.1
WORCESTER	1,883	60.2	17.6	15.1	32.8	65.8	15.0	14.3	29.3	31.0

**Notes:**

Data that did not pass data quality tests were excluded from the analysis.

\* Data is suppressed due to the small number of individuals in this cell.

# There is an unusual variation between this year's data and the prior year's data.

Definitions: *Underweight* – BMI for age percentile < 5<sup>th</sup> percentile; *Healthy weight* – BMI for age percentile between 5<sup>th</sup> and 85<sup>th</sup> percentile; *Overweight* – BMI for age percentile between 85<sup>th</sup> and 95<sup>th</sup> percentile; *Obese* – BMI for age percentile ≥ 95<sup>th</sup> percentile.



**Table 3. Body Mass Index Screening Results for Children in Grade 4 in Massachusetts School Districts, 2011-2012**

School District	Total number of students screened (N)	Males				Females				Males and Females
		Healthy Weight (%)	Over-weight (%)	Obese (%)	Over-weight or Obese (%)	Healthy Weight (%)	Over-weight (%)	Obese (%)	Over-weight or Obese (%)	Over-weight or Obese (%)
<b>TOTAL</b>	<b>63,556</b>	<b>61.6</b>	<b>17.3</b>	<b>19.0</b>	<b>36.2</b>	<b>65.0</b>	<b>16.6</b>	<b>15.6</b>	<b>32.3</b>	<b>34.3</b>
ABBY KELLEY FOSTER REG CHARTER	125	54.4	29.4	14.7	44.1	59.6	22.8	17.5	40.4	42.4
ACTON-BOXBOROUGH REGIONAL	412	77.3	15.2	6.2	21.3	81.6	*	*	15.9	18.7
ACUSHNET	104	64.7	*	*	33.3	47.2	20.8	30.2	50.9	42.3
ADAMS-CHESHIRE REGIONAL	103	71.2	*	*	28.8	56.9	*	*	43.1	35.9
AMESBURY	190	71.6	10.5	15.8	26.3	71.6	10.5	15.8	26.3	26.3
AMHERST-PELHAM (SCHL UNION 26)	172	65.5	14.3	19.0	33.3	72.7	*	*	23.9	28.5
ANDOVER	501	69.6	18.1	11.2	29.2	75.1	13.7	8.3	22.0	25.7
ARLINGTON	387	74.2	13.4	10.5	23.9	81.5	9.6	6.7	16.3	20.4
ASHBURNHAM-WESTMINSTER REG	155	51.2	22.6	23.8	46.4	69.0	*	*	28.2	38.1
ASHLAND	211	66.3	20.2	10.6	30.8	74.8	13.1	11.2	24.3	27.5
ATHOL-ROYALSTON REGIONAL	128	50.8	*	*	42.9	55.4	18.5	26.2	44.6	43.8
ATTLEBORO	421	58.9	15.8	23.0	38.8	58.0	19.8	18.4	38.2	38.5
AUBURN	173	66.0	17.0	13.8	30.9	67.1	*	*	30.4	30.6
AVON	55	59.3	*	*	37.0	50.0	*	*	46.4	41.8
AYER SHIRLEY REGIONAL	124	62.9	14.3	20.0	34.3	53.7	*	*	42.6	37.9
BARNSTABLE	405	57.2	21.6	20.1	41.8	56.9	16.6	22.7	39.3	40.5
BEDFORD	171	72.5	*	*	25.3	77.5	*	*	21.3	23.4

**Table 3. Body Mass Index Screening Results for Children in Grade 4 in Massachusetts School Districts, 2011-2012**

School District	Total number of students screened (N)	Males				Females				Males and Females
		Healthy Weight (%)	Over-weight (%)	Obese (%)	Over-weight or Obese (%)	Healthy Weight (%)	Over-weight (%)	Obese (%)	Over-weight or Obese (%)	Over-weight or Obese (%)
BELCHERTOWN	193	72.0	11.0	16.0	27.0	71.0	12.9	12.9	25.8	26.4
BELLINGHAM	203	77.8	*	*	20.2	67.3	14.4	12.5	26.9	23.6
BELMONT	324	71.9	12.5	14.4	26.9	70.1	18.9	7.3	26.2	26.5
BERKSHIRE HILLS REGIONAL	71	76.3	*	*	*	72.7	*	*	*	22.5
BERLIN BOYLSTON (SCHL UNION 60)	71	53.8	*	*	41.0	59.4	*	*	40.6	40.8
BEVERLY	328	61.1	16.0	21.7	37.7	60.8	17.6	17.0	34.6	36.3
BI-COUNTY COLLABORATIVE (BICO)	13	*	*	*	*	*	*	*	*	*
BILLERICA	526	63.1	15.0	19.7	34.7	64.7	18.3	13.9	32.1	33.5
BLACKSTONE-MILLVILLE REGIONAL	146	58.7	22.7	18.7	41.3	67.6	14.1	16.9	31.0	36.3
BOSTON	3,471	49.7	19.2	28.7	47.9	52.8	20.2	24.4	44.6	46.3
BOSTON RENAISSANCE CHARTER	151	55.6	18.1	25.0	43.1	57.0	21.5	21.5	43.0	43.0
BOURNE	169	63.9	16.9	19.3	36.1	74.4	11.6	12.8	24.4	30.2
BRAINTREE	462	64.7	16.6	17.0	33.6	70.1	14.9	11.3	26.2	30.1
BRIDGEWATER-RAYNHAM REGIONAL	421	55.6	19.2	23.4	42.5	64.3	20.8	13.5	34.3	38.5
BROCKTON	1,123	53.3	18.4	25.8	44.2	56.7	17.1	23.5	40.6	42.6
BROOKLINE	510	75.0	16.3	8.7	25.0	81.2	9.4	5.6	15.0	20.4
BURLINGTON	277	70.3	15.9	11.7	27.6	77.3	13.6	7.6	21.2	24.5
CAMBRIDGE	418	60.7	21.3	16.1	37.4	59.9	18.8	19.3	38.2	37.8
CANTON	258	67.7	16.2	15.4	31.5	66.4	16.4	14.1	30.5	31.0
CAPE COD COLLABORATIVE	-	*	*	*	*	*	*	*	*	*

**Table 3. Body Mass Index Screening Results for Children in Grade 4 in Massachusetts School Districts, 2011-2012**

School District	Total number of students screened (N)	Males				Females				Males and Females
		Healthy Weight (%)	Over-weight (%)	Obese (%)	Over-weight or Obese (%)	Healthy Weight (%)	Over-weight (%)	Obese (%)	Over-weight or Obese (%)	Over-weight or Obese (%)
CAPS EDUCATIONAL COLLAB.	*	*	*	*	*	*	*	*	*	*
CARVER	129	67.2	14.9	16.4	31.3	75.8	*	*	22.6	27.1
CENTRAL BERKSHIRE REGIONAL	114	71.4	*	*	25.4	66.7	*	*	33.3	28.9
CHATHAM	50	52.0	*	*	48.0	68.0	*	*	*	40.0
CHELMSFORD	409	66.3	14.3	15.8	30.1	79.3	6.6	10.8	17.4	23.5
CHICOPEE	506	52.5	26.1	20.3	46.4	61.3	20.9	16.5	37.4	42.3
CLINTON	127	60.6	*	*	38.0	66.1	*	*	30.4	34.6
COHASSET	126	81.7	*	*	16.7	81.8	*	*	15.2	15.9
CONCORD-CARLISLE REGIONAL	275	84.8	*	*	15.2	82.5	*	*	14.0	14.5
CONSERVATORY LAB CHARTER	21	*	*	*	*	*	*	*	*	*
DANVERS	288	51.6	18.3	24.8	43.1	65.9	20.0	11.9	31.9	37.8
DARTMOUTH	305	65.7	12.6	18.9	31.4	60.0	21.5	15.4	36.9	33.8
DEDHAM	241	63.9	13.4	20.2	33.6	63.1	13.9	16.4	30.3	32.0
DENNIS-YARMOUTH REGIONAL	196	67.0	13.4	18.6	32.0	67.7	18.2	12.1	30.3	31.1
DIGHTON-REHOBOTH REGIONAL	216	56.9	22.4	19.0	41.4	65.0	11.0	24.0	35.0	38.4
DOUGLAS	129	73.1	*	*	25.0	74.0	*	*	20.8	22.5
DOVER-SHERBORN (SCHL UNION 50)	183	76.1	*	*	21.7	79.1	*	*	16.5	19.1
DRACUT	314	58.3	15.3	25.8	41.1	63.6	21.9	13.9	35.8	38.5
DUDLEY-CHARLTON REGIONAL	312	63.8	27.5	7.5	35.0	71.1	17.1	10.5	27.6	31.4
DUXBURY	242	78.2	10.5	8.9	19.4	79.7	*	*	18.6	19.0

**Table 3. Body Mass Index Screening Results for Children in Grade 4 in Massachusetts School Districts, 2011-2012**

School District	Total number of students screened (N)	Males				Females				Males and Females
		Healthy Weight (%)	Over-weight (%)	Obese (%)	Over-weight or Obese (%)	Healthy Weight (%)	Over-weight (%)	Obese (%)	Over-weight or Obese (%)	Over-weight or Obese (%)
EAST BRIDGEWATER	125	59.2	*	*	36.7	64.5	*	*	32.9	34.4
EAST LONGMEADOW	225	68.1	13.3	18.6	31.9	69.6	8.9	19.6	28.6	30.2
EASTHAMPTON	111	59.3	*	*	40.7	49.1	28.1	21.1	49.1	45.0
EASTON	272	65.0	12.6	20.3	32.9	55.8	20.2	21.7	41.9	37.1
EDWARD BROOKE CHARTER (ALL CAMPUSES)	61	57.7	*	*	38.5	40.0	*	*	57.1	49.2
ERVING (SCHOOL UNION 28)	66	59.5	*	*	40.5	75.9	*	*	*	31.8
FAIRHAVEN	142	61.1	*	*	34.7	72.9	*	*	22.9	28.9
FALL RIVER	763	53.8	20.3	24.8	45.1	53.9	19.5	25.8	45.3	45.2
FALMOUTH	191	68.2	15.9	13.6	29.5	65.0	15.5	17.5	33.0	31.4
FARMINGTON RIVER REGIONAL	18	100.0	*	*	*	*	*	*	*	*
FITCHBURG	369	46.8	19.1	32.4	51.6	54.7	16.0	27.1	43.1	47.4
FOXBOROUGH	193	71.4	16.3	11.2	27.6	68.4	12.6	16.8	29.5	28.5
FRAMINGHAM	593	59.3	19.2	19.5	38.7	60.5	18.2	18.2	36.4	37.6
FREETOWN-LAKEVILLE REGIONAL	229	65.7	14.9	19.4	34.3	66.3	16.8	15.8	32.6	33.6
FRONTIER (SCHOOL UNION 38)	141	68.5	*	*	30.1	64.7	*	*	32.4	31.2
GARDNER	199	63.0	15.0	20.0	35.0	50.5	20.2	26.3	46.5	40.7
GATEWAY REGIONAL	83	58.1	*	*	41.9	59.6	*	*	38.5	39.8
GEORGETOWN	133	62.2	13.5	20.3	33.8	84.7	*	*	*	25.6
GLOUCESTER	204	60.6	16.2	22.2	38.4	54.3	21.0	21.0	41.9	40.2
GLOUCESTER COMMUNITY ARTS CHARTER	14	*	*	*	*	*	*	*	*	*

**Table 3. Body Mass Index Screening Results for Children in Grade 4 in Massachusetts School Districts, 2011-2012**

School District	Total number of students screened (N)	Males				Females				Males and Females
		Healthy Weight (%)	Over-weight (%)	Obese (%)	Over-weight or Obese (%)	Healthy Weight (%)	Over-weight (%)	Obese (%)	Over-weight or Obese (%)	Over-weight or Obese (%)
GRAFTON	236	66.2	20.0	12.3	32.3	77.4	*	*	20.8	27.1
GRANBY	73	54.1	*	*	43.2	80.6	*	*	*	28.8
GROTON-DUNSTABLE REGIONAL	188	71.4	*	*	24.5	73.3	*	*	24.4	24.5
HADLEY	38	52.6	*	*	*	63.2	*	*	*	42.1
HAMILTON-WENHAM REGIONAL	145	73.1	*	*	23.9	87.2	*	*	*	15.9
HAMPDEN-WILBRAHAM REGIONAL	230	65.8	15.0	16.7	31.7	71.8	*	*	26.4	29.1
HAMPSHIRE (SCHOOL UNION 66)	139	66.7	*	*	30.3	68.5	*	*	31.5	30.9
HARWICH	105	59.7	24.2	16.1	40.3	48.8	*	*	48.8	43.8
HATFIELD	36	65.0	*	*	*	75.0	*	*	*	*
HAVERHILL	588	57.2	16.3	25.4	41.7	56.7	16.1	24.6	40.7	41.2
HILL VIEW MONTESSORI CHARTER	29	*	*	*	*	70.0	*	*	*	*
HILLTOWN CHARTER	19	*	*	*	*	100.0	*	*	*	*
HINGHAM	334	71.8	17.5	9.6	27.1	81.5	*	*	17.8	22.8
HOLBROOK	95	54.7	18.9	22.6	41.5	64.3	*	*	33.3	37.9
HOLLISTON	214	63.3	*	*	33.9	73.3	*	*	21.9	28.0
HOLYOKE	309	59.3	18.0	19.3	37.3	59.7	20.8	18.2	39.0	38.2
HOPEDALE	84	58.3	*	*	41.7	54.2	*	*	45.8	44.0
HOPKINTON	258	84.6	*	*	14.6	78.1	13.3	7.8	21.1	17.8
HUDSON	228	64.7	14.7	19.8	34.5	69.6	14.3	13.4	27.7	31.1
HULL #	91	76.1	*	*	21.7	80.0	*	*	*	20.9

**Table 3. Body Mass Index Screening Results for Children in Grade 4 in Massachusetts School Districts, 2011-2012**

School District	Total number of students screened (N)	Males				Females				Males and Females
		Healthy Weight (%)	Over-weight (%)	Obese (%)	Over-weight or Obese (%)	Healthy Weight (%)	Over-weight (%)	Obese (%)	Over-weight or Obese (%)	Over-weight or Obese (%)
IPSWICH	152	65.8	13.2	18.4	31.6	68.4	*	*	28.9	30.3
KING PHILIP REGIONAL	265	73.2	12.8	12.1	24.8	65.5	13.8	16.4	30.2	27.2
LAWRENCE	1,026	51.6	15.9	31.6	47.4	52.1	17.3	28.8	46.1	46.8
LAWRENCE FAMILY DEV CHARTER	61	44.8	*	*	55.2	56.3	*	*	43.8	49.2
LEE-TYRINGHAM (SCHOOL UNION 29)	52	57.7	*	*	42.3	65.4	*	*	*	36.5
LEICESTER	139	72.6	*	*	27.4	69.7	*	*	28.8	28.1
LENOX	56	56.0	*	*	44.0	71.0	*	*	*	32.1
LEOMINSTER	484	65.0	11.5	21.8	33.3	59.8	18.3	17.8	36.1	34.7
LEXINGTON	492	71.8	16.5	9.3	25.8	80.3	13.5	4.1	17.6	21.7
LINCOLN-SUDBURY REGIONAL	441	71.2	18.4	10.0	28.4	75.9	16.8	5.2	22.0	25.6
LITTLETON	137	69.1	*	*	29.4	76.8	*	*	21.7	25.5
LONGMEADOW	207	71.9	*	*	27.1	67.6	18.0	11.7	29.7	28.5
LOWELL	1,027	50.7	19.0	28.1	47.1	61.9	13.1	21.8	34.9	41.2
LOWELL COMMUNITY CHARTER	85	66.7	*	*	33.3	53.8	21.2	21.2	42.3	38.8
LUDLOW	200	60.0	21.0	18.0	39.0	61.0	18.0	20.0	38.0	38.5
LUNENBURG	109	51.6	19.4	25.8	45.2	68.1	*	*	27.7	37.6
LYNN	977	49.3	21.6	27.8	49.5	54.5	18.9	24.4	43.3	46.4
LYNNFIELD	168	64.2	18.5	17.3	35.8	64.4	20.7	14.9	35.6	35.7
MALDEN	448	43.7	18.6	34.2	52.8	62.2	17.5	18.0	35.5	44.4
MANCHESTER ESSEX REGIONAL	115	66.0	*	*	30.2	79.0	*	*	16.1	22.6

**Table 3. Body Mass Index Screening Results for Children in Grade 4 in Massachusetts School Districts, 2011-2012**

School District	Total number of students screened (N)	Males				Females				Males and Females
		Healthy Weight (%)	Over-weight (%)	Obese (%)	Over-weight or Obese (%)	Healthy Weight (%)	Over-weight (%)	Obese (%)	Over-weight or Obese (%)	Over-weight or Obese (%)
MANSFIELD	354	65.5	23.2	8.8	32.0	74.4	15.6	7.5	23.1	28.0
MARBLEHEAD	236	76.0	*	*	23.1	77.4	10.4	8.7	19.1	21.2
MARLBOROUGH	371	60.2	15.2	20.9	36.1	61.1	19.4	15.0	34.4	35.3
MARSHFIELD	345	72.1	14.5	12.8	27.4	70.5	10.8	13.9	24.7	26.1
MARTHAS VINEYARD (SCHL UNION 19)	153	67.1	*	*	31.5	71.3	12.5	15.0	27.5	29.4
MARTHA'S VINEYARD CHARTER MASCONOMET (AND TRI-TOWN SCHOOL UNION)	12	*	*	*	*	*	*	*	*	*
	298	74.8	9.8	15.4	25.2	78.7	*	*	16.8	20.8
MASHPEE	137	62.0	*	*	35.2	54.5	*	*	42.4	38.7
MAYNARD	110	68.4	*	*	29.8	84.9	*	*	*	21.8
MEDFIELD	216	71.4	*	*	26.1	80.4	*	*	16.5	21.8
MEDFORD	311	48.8	19.4	30.0	49.4	53.0	15.2	29.1	44.4	46.9
MEDWAY	213	75.2	*	*	23.1	71.7	*	*	23.9	23.5
MELROSE	285	63.5	19.0	13.1	32.1	68.2	18.2	8.8	27.0	29.5
MENDON-UPTON REGIONAL	188	73.7	*	*	22.1	67.7	16.1	14.0	30.1	26.1
METHUEN	511	60.2	14.1	20.5	34.5	61.5	17.9	15.6	33.6	34.1
MIDDLEBOROUGH	257	57.9	19.0	23.0	42.1	58.0	22.1	19.8	42.0	42.0
MILFORD	305	60.7	19.3	16.7	36.0	65.8	18.7	11.6	30.3	33.1
MILLBURY	144	64.2	*	*	34.3	66.2	16.9	16.9	33.8	34.0
MILLIS	122	73.8	*	*	26.2	70.5	*	*	29.5	27.9
MILTON	282	74.3	10.4	13.2	23.6	69.6	10.9	15.2	26.1	24.8

**Table 3. Body Mass Index Screening Results for Children in Grade 4 in Massachusetts School Districts, 2011-2012**

School District	Total number of students screened (N)	Males				Females				Males and Females
		Healthy Weight (%)	Over-weight (%)	Obese (%)	Over-weight or Obese (%)	Healthy Weight (%)	Over-weight (%)	Obese (%)	Over-weight or Obese (%)	Over-weight or Obese (%)
MOHAWK TRAIL REGIONAL	72	61.3	*	*	38.7	65.9	*	*	29.3	33.3
MONSON	94	60.0	*	*	37.8	71.4	*	*	28.6	33.0
NANTUCKET	106	59.2	*	*	40.8	54.4	*	*	45.6	43.4
NARRAGANSETT REGIONAL	105	55.8	*	*	40.4	73.6	*	*	26.4	33.3
NASHOBA REGIONAL	250	70.2	17.4	12.4	29.8	71.3	20.2	8.5	28.7	29.2
NATICK	413	73.5	13.7	9.0	22.7	74.8	14.4	8.9	23.3	23.0
NAUSET (SCHOOL UNION 54)	185	60.7	19.0	16.7	35.7	67.3	15.8	11.9	27.7	31.4
NEEDHAM	436	83.0	7.1	7.6	14.7	84.9	7.1	4.7	11.8	13.3
NEW BEDFORD	842	58.5	17.7	21.7	39.4	58.6	22.0	17.9	40.0	39.7
NEWBURYPORT	156	61.7	*	*	31.7	72.9	*	*	22.9	26.3
NEWTON	952	75.1	12.1	9.3	21.4	69.5	17.8	7.0	24.8	23.2
NORTH ANDOVER	366	67.1	17.9	14.5	32.4	72.5	13.5	12.4	25.9	29.0
NORTH ATTLEBOROUGH	380	63.2	19.2	15.4	34.6	70.2	15.7	11.6	27.3	30.8
NORTH MIDDLESEX REGIONAL	294	64.7	15.0	18.8	33.8	67.7	14.9	14.3	29.2	31.3
NORTH READING	214	66.7	15.2	18.1	33.3	66.1	17.4	14.7	32.1	32.7
NORTH RIVER COLLABORATIVE	*	*	*	*	*	*	*	*	*	*
NORTHAMPTON	171	65.2	17.4	15.2	32.6	75.9	*	*	24.1	28.7
NORTHBORO-SOUTHBORO (UNION 3)	385	74.4	13.6	10.6	24.1	62.9	17.2	5.4	22.6	23.4
NORTHBRIDGE	194	50.5	24.2	24.2	48.5	62.1	*	*	36.8	42.8
NORTHERN BERKSHIRE (UNION 43)	36	*	*	*	*	47.6	*	*	47.6	44.4



**Table 3. Body Mass Index Screening Results for Children in Grade 4 in Massachusetts School Districts, 2011-2012**

School District	Total number of students screened (N)	Males				Females				Males and Females
		Healthy Weight (%)	Over-weight (%)	Obese (%)	Over-weight or Obese (%)	Healthy Weight (%)	Over-weight (%)	Obese (%)	Over-weight or Obese (%)	Over-weight or Obese (%)
NORTON	202	65.3	17.3	14.3	31.6	68.3	12.5	17.3	29.8	30.7
NORWELL	197	67.3	21.8	9.9	31.7	78.1	*	*	19.8	25.9
NORWOOD	261	56.0	18.7	23.9	42.5	56.7	18.1	22.0	40.2	41.4
OLD ROCHESTER (UNION 55)	215	63.6	15.5	18.2	33.6	78.1	11.4	9.5	21.0	27.4
OXFORD	145	50.8	23.7	23.7	47.5	66.3	14.0	16.3	30.2	37.2
PALMER	131	57.3	21.3	20.0	41.3	64.3	*	*	32.1	37.4
PEABODY	401	47.4	21.9	27.4	49.3	51.6	21.0	24.7	45.7	47.6
PEMBROKE	243	58.7	19.8	19.0	38.9	73.5	12.0	10.3	22.2	30.9
PENTUCKET REGIONAL	258	77.1	11.8	9.7	21.5	80.7	*	*	16.7	19.4
PILGRIM AREA COLLABORATIVE	*	*	*	*	*	*	*	*	*	*
PIONEER VALLEY CHINESE IMMERSION CHARTER	18	*	*	*	*	100.0	*	*	*	*
PIONEER VALLEY REGIONAL	73	73.7	*	*	*	62.9	*	*	34.3	27.4
PITTSFIELD	451	62.2	14.6	18.9	33.5	64.7	19.7	14.2	33.9	33.7
PLYMOUTH	659	69.5	14.5	14.8	29.2	65.0	20.4	12.6	32.9	31.1
QUABBIN REGIONAL	184	60.9	23.0	14.9	37.9	61.9	20.6	14.4	35.1	36.4
QUABOAG REGIONAL	92	57.4	20.4	20.4	40.7	57.9	*	*	42.1	41.3
QUINCY	624	58.7	16.1	22.3	38.4	63.0	15.0	15.4	30.4	34.3
RALPH C MAHAR REGIONAL	111	78.9	*	*	19.3	74.1	*	*	25.9	22.5
RANDOLPH	257	51.2	21.1	25.2	46.3	55.2	21.6	21.6	43.3	44.7
READS COLLABORATIVE	-	*	*	*	*	*	*	*	*	*

**Table 3. Body Mass Index Screening Results for Children in Grade 4 in Massachusetts School Districts, 2011-2012**

School District	Total number of students screened (N)	Males				Females				Males and Females
		Healthy Weight (%)	Over-weight (%)	Obese (%)	Over-weight or Obese (%)	Healthy Weight (%)	Over-weight (%)	Obese (%)	Over-weight or Obese (%)	Over-weight or Obese (%)
REVERE	521	41.7	25.0	31.3	56.3	54.3	20.8	23.4	44.2	50.1
RICHMOND	22	*	*	*	*	*	*	*	*	*
RIVER VALLEY CHARTER	34	83.3	*	*	*	77.3	*	*	*	*
ROCKLAND	178	61.5	15.6	20.8	36.5	64.6	20.7	12.2	32.9	34.8
ROCKPORT	77	60.5	*	*	36.8	82.1	*	*	*	23.4
SABIS FOXBORO REG'L CHARTER	112	64.4	*	*	31.1	56.7	20.9	17.9	38.8	35.7
SABIS INTERNATIONAL	127	54.7	18.8	26.6	45.3	60.3	20.6	19.0	39.7	42.5
SALEM	363	54.8	15.8	27.1	42.9	55.9	16.7	25.8	42.5	42.7
SANDWICH	273	69.0	18.3	11.3	29.6	71.8	19.1	7.6	26.7	28.2
SAUGUS	267	56.8	15.2	27.2	42.4	62.0	19.0	14.8	33.8	37.8
SCITUATE	256	60.3	29.4	7.4	36.8	79.2	8.3	10.0	18.3	28.1
SEEKONK	177	54.8	20.2	22.6	42.9	74.2	*	*	24.7	33.3
SHARON	233	74.6	*	*	20.6	83.2	*	*	16.8	18.9
SHREWSBURY	510	61.8	18.5	15.6	34.2	71.9	14.0	11.9	26.0	30.4
SILVER LAKE (SCHOOL UNION 31)	273	69.6	8.7	15.9	24.6	68.1	13.3	13.3	26.7	25.6
SOMERSET BERKLEY REGIONAL	266	66.4	14.3	16.4	30.7	71.4	16.7	9.5	26.2	28.6
SOMERVILLE	434	49.0	19.8	28.0	47.7	46.6	18.8	33.0	51.8	49.5
SOUTH HADLEY	156	69.9	*	*	30.1	78.3	*	*	21.7	25.6
SOUTH SHORE CHARTER	45	50.0	*	*	50.0	73.9	*	*	*	37.8
SOUTH SHORE EDUCATIONAL COLLAB.	-	*	*	*	*	*	*	*	*	*

**Table 3. Body Mass Index Screening Results for Children in Grade 4 in Massachusetts School Districts, 2011-2012**

School District	Total number of students screened (N)	Males				Females				Males and Females
		Healthy Weight (%)	Over-weight (%)	Obese (%)	Over-weight or Obese (%)	Healthy Weight (%)	Over-weight (%)	Obese (%)	Over-weight or Obese (%)	Over-weight or Obese (%)
SOUTHBRIDGE	184	51.1	16.3	31.5	47.8	44.6	29.3	23.9	53.3	50.5
SOUTHERN BERKSHIRE REGIONAL	58	*	*	*	66.7	75.7	*	*	*	37.9
SOUTHWICK-TOLLAND REGIONAL	127	58.7	14.7	25.3	40.0	73.1	*	*	23.1	33.1
SPENCER-E BROOKFIELD REGIONAL	128	57.7	15.4	20.5	35.9	58.0	*	*	36.0	35.9
SPRINGFIELD	1,671	52.5	18.2	26.4	44.7	55.3	18.3	23.7	41.9	43.3
STONEHAM	213	58.6	14.4	25.2	39.6	71.6	17.6	10.8	28.4	34.3
STOUGHTON	275	58.8	19.6	19.6	39.2	62.2	19.7	17.3	37.0	38.2
SUTTON	121	82.4	*	*	*	82.9	*	*	15.7	16.5
SWAMPSCOTT (INCLUDING NAHANT)	162	56.0	21.3	20.0	41.3	65.5	18.4	13.8	32.2	36.4
SWANSEA	163	56.1	17.1	26.8	43.9	50.6	23.5	22.2	45.7	44.8
TANTASQUA (SCHOOL UNION 61)	266	65.4	21.5	10.8	32.3	58.8	22.8	16.2	39.0	35.7
TAUNTON	631	54.5	17.2	26.5	43.7	56.2	16.4	25.1	41.5	42.6
WEST BRIDGEWATER	92	64.4	*	*	31.1	53.2	*	*	44.7	38.0
WEST SPRINGFIELD	264	60.4	20.1	18.0	38.1	60.8	17.6	19.2	36.8	37.5
WHITMAN-HANSON REGIONAL	312	48.3	23.8	27.2	51.0	50.9	26.7	21.1	47.8	49.4
WILLIAMSTOWN-LANESBOROUGH (SCHOOL UNION 71)	85	61.2	*	*	32.7	75.0	*	*	*	29.4
WILMINGTON	262	62.0	11.7	25.5	37.2	69.6	18.4	12.0	30.4	34.0
WINCHENDON	122	59.3	*	*	40.7	69.1	*	*	29.4	34.4
WINCHESTER	345	76.7	11.7	9.8	21.5	82.4	8.2	8.2	16.5	18.8
WINTHROP	153	55.1	15.9	29.0	44.9	60.7	17.9	17.9	35.7	39.9

**Table 3. Body Mass Index Screening Results for Children in Grade 4 in Massachusetts School Districts, 2011-2012**

School District	Total number of students screened (N)	Males				Females				Males and Females
		Healthy Weight (%)	Over-weight (%)	Obese (%)	Over-weight or Obese (%)	Healthy Weight (%)	Over-weight (%)	Obese (%)	Over-weight or Obese (%)	Over-weight or Obese (%)
WOBURN	351	66.5	14.5	19.0	33.5	65.7	18.0	16.3	34.3	33.9
WORCESTER	1,625	50.0	19.4	23.8	43.1	56.4	17.4	20.4	37.8	40.6

Note: Data that did not pass data quality tests were excluded from the analysis.

Definitions: *Underweight* – BMI for age percentile < 5<sup>th</sup> percentile; *Healthy weight* – BMI for age percentile between 5<sup>th</sup> and 85<sup>th</sup> percentile; *Overweight* – BMI for age percentile between 85<sup>th</sup> and 95<sup>th</sup> percentile; *Obese* – BMI for age percentile ≥ 95<sup>th</sup> percentile.

\* Data is suppressed due to the small number of individuals in this cell.

# There is an unusual variation between this year's data and the prior year's data.

**Table 4. Body Mass Index Screening Results for Children in Grade 7 in Massachusetts School Districts, 2010-2011**

School District	Total number of students screened (N)	Males				Females				Males and Females
		Healthy Weight (%)	Over-weight (%)	Obese (%)	Over-weight or Obese (%)	Healthy Weight (%)	Over-weight (%)	Obese (%)	Over-weight or Obese (%)	Over-weight or Obese (%)
<b>TOTAL</b>	<b>63,591</b>	<b>61.5</b>	<b>16.8</b>	<b>18.8</b>	<b>35.6</b>	<b>65.3</b>	<b>17.1</b>	<b>15.1</b>	<b>32.1</b>	<b>33.9</b>
ABBY KELLEY FOSTER REG CHARTER	86	69.8	*	*	30.2	60.5	*	*	39.5	34.9
ABINGTON	150	56.8	16.2	23.0	39.2	65.8	*	*	27.6	33.3
ACADEMY OF PACIFIC RIM CHARTER	72	45.9	*	*	45.9	28.6	*	*	68.6	56.9
ACCEPT EDUCATION COLLABORATIVE	*	*	*	*	*	*	*	*	*	*
ACTON-BOXBOROUGH REGIONAL	322	72.5	14.1	8.5	22.5	83.9	*	*	12.2	16.8
ACUSHNET	125	61.4	17.1	21.4	38.6	54.5	*	*	38.2	38.4
ADAMS-CHESHIRE REGIONAL	98	55.1	*	*	36.7	59.2	*	*	40.8	38.8
ADVANCED MATH AND SCIENCE ACADEMY CHARTER	175	77.3	*	*	18.2	88.5	*	*	*	14.3
AMESBURY	203	66.4	8.8	21.2	30.1	70.0	*	*	27.8	29.1
AMHERST-PELHAM (SCHL UNION 26)	231	70.2	18.2	9.1	27.3	73.6	12.7	10.9	23.6	25.5
ANDOVER	510	71.0	18.5	6.9	25.4	79.9	11.5	4.3	15.8	21.0
ARLINGTON	317	77.4	10.4	11.6	22.0	75.8	11.1	7.2	18.3	20.2
ASHBURNHAM-WESTMINSTER REG	196	77.8	14.3	7.9	22.2	72.9	*	*	25.7	23.5
ASHLAND	184	69.6	15.2	12.7	27.8	67.6	12.4	14.3	26.7	27.2
ATHOL-ROYALSTON REGIONAL	100	51.7	*	*	46.6	52.4	*	*	47.6	47.0
ATLANTIS CHARTER	85	40.6	*	*	53.1	58.5	*	*	39.6	44.7

**Table 4. Body Mass Index Screening Results for Children in Grade 7 in Massachusetts School Districts, 2010-2011**

School District	Total number of students screened (N)	Males				Females				Males and Females
		Healthy Weight (%)	Over-weight (%)	Obese (%)	Over-weight or Obese (%)	Healthy Weight (%)	Over-weight (%)	Obese (%)	Over-weight or Obese (%)	Over-weight or Obese (%)
ATTLEBORO	412	60.1	17.2	20.2	37.3	54.7	17.9	24.6	42.5	39.6
AUBURN	184	55.1	15.7	25.8	41.6	75.8	12.6	10.5	23.2	32.1
AVON	64	53.8	*	*	46.2	60.5	*	*	39.5	42.2
AYER SHIRLEY REGIONAL	119	55.7	18.6	22.9	41.4	49.0	*	*	46.9	43.7
BARNSTABLE	379	58.3	19.9	19.9	39.8	57.1	19.0	21.4	40.5	40.1
BEDFORD	190	68.3	14.9	13.9	28.7	70.8	13.5	13.5	27.0	27.9
BELCHERTOWN	189	57.6	*	*	36.5	70.2	11.5	12.5	24.0	29.6
BELLINGHAM	181	60.0	17.9	18.9	36.8	61.6	*	*	31.4	34.3
BELMONT	287	69.4	12.6	17.1	29.7	79.5	8.5	9.7	18.2	22.6
BERKSHIRE ARTS AND TECHNOLOGY CHARTER	57	48.5	*	*	45.5	54.2	*	*	*	42.1
BERKSHIRE HILLS REGIONAL	113	71.9	*	*	24.6	69.6	*	*	26.8	25.7
BERLIN BOYLSTON (SCHL UNION 60)	87	52.3	*	*	43.2	67.4	*	*	30.2	36.8
BEVERLY	280	59.2	16.4	20.4	36.8	62.5	21.9	11.7	33.6	35.4
BI-COUNTY COLLABORATIVE (BICO)	18	*	*	*	*	*	*	*	*	*
BILLERICA	496	53.2	19.1	25.9	45.0	59.6	21.6	16.5	38.1	41.9
BLACKSTONE-MILLVILLE REGIONAL	175	59.8	19.5	19.5	39.0	66.7	18.3	11.8	30.1	34.3
BOSTON	3,223	54.0	18.8	25.3	44.1	55.3	20.4	22.8	43.1	43.6
BOURNE	182	60.6	20.2	17.2	37.4	62.7	*	*	34.9	36.3
BRAINTREE	427	60.0	16.7	20.0	36.7	66.4	19.4	12.4	31.8	34.2

**Table 4. Body Mass Index Screening Results for Children in Grade 7 in Massachusetts School Districts, 2010-2011**

School District	Total number of students screened (N)	Males				Females				Males and Females
		Healthy Weight (%)	Over-weight (%)	Obese (%)	Over-weight or Obese (%)	Healthy Weight (%)	Over-weight (%)	Obese (%)	Over-weight or Obese (%)	Over-weight or Obese (%)
BRIDGEWATER-RAYNHAM REGIONAL	492	61.2	15.3	17.6	32.9	73.4	14.3	9.3	23.6	28.5
BROCKTON	1,139	54.5	17.9	25.7	43.6	55.7	19.9	23.6	43.5	43.5
BROOKLINE	434	71.8	15.5	11.2	26.7	76.8	12.7	6.1	18.9	22.6
BURLINGTON	253	67.9	15.4	12.2	27.6	61.9	14.4	17.5	32.0	29.2
CAMBRIDGE	320	62.4	15.3	20.6	35.9	62.7	20.7	14.7	35.3	35.6
CANTON	233	64.6	15.9	17.7	33.6	70.8	16.7	10.0	26.7	30.0
CAPE COD COLLABORATIVE	*	*	*	*	*	*	*	*	*	*
CAPE COD LIGHTHOUSE CHARTER	76	59.0	*	*	38.5	64.9	*	*	32.4	35.5
CAPS EDUCATIONAL COLLAB.	*	*	*	*	*	*	*	*	*	*
CARVER	145	53.9	18.4	22.4	40.8	66.7	15.9	14.5	30.4	35.9
CENTRAL BERKSHIRE REGIONAL	149	67.2	14.9	17.9	32.8	62.2	*	*	36.6	34.9
CHATHAM	50	65.2	*	*	*	74.1	*	*	*	28.0
CHELMSFORD	401	67.2	18.6	10.8	29.4	68.0	20.8	10.2	31.0	30.2
CHICOPEE	579	58.1	16.3	24.9	41.2	56.0	21.8	21.8	43.6	42.3
CHRISTA MCAULIFFE REG CHARTER	97	73.3	*	*	23.3	62.2	*	*	32.4	26.8
CLINTON	108	63.6	15.2	16.7	31.8	54.8	*	*	42.9	36.1
COHASSET	115	66.7	*	*	29.4	85.9	*	*	*	19.1
COMMUNITY CHARTER SCHOOL OF CAMBRIDGE	66	47.2	*	*	52.8	53.3	*	*	46.7	50.0
CONCORD-CARLISLE REGIONAL	310	80.0	*	*	15.5	83.2	*	*	14.8	15.2

**Table 4. Body Mass Index Screening Results for Children in Grade 7 in Massachusetts School Districts, 2010-2011**

School District	Total number of students screened (N)	Males				Females				Males and Females
		Healthy Weight (%)	Over-weight (%)	Obese (%)	Over-weight or Obese (%)	Healthy Weight (%)	Over-weight (%)	Obese (%)	Over-weight or Obese (%)	Over-weight or Obese (%)
DANVERS	307	51.6	21.3	25.2	46.5	63.2	25.0	11.2	36.2	41.4
DARTMOUTH	335	62.1	18.0	16.8	34.8	66.7	16.7	15.5	32.2	33.4
DEDHAM	239	61.1	19.0	19.0	38.1	71.7	9.7	17.7	27.4	33.1
DENNIS-YARMOUTH REGIONAL	226	64.9	12.3	20.2	32.5	70.5	19.6	9.8	29.5	31.0
DIGHTON-REHOBOTH REGIONAL	265	70.3	17.6	10.1	27.7	76.1	*	*	20.5	24.5
DOUGLAS	142	62.1	*	*	37.9	69.7	*	*	23.7	30.3
DOVER-SHERBORN (SCHL UNION 50)	196	75.5	14.5	9.1	23.6	87.2	*	*	*	17.3
DRACUT	301	62.4	17.6	18.2	35.9	67.9	19.1	11.5	30.5	33.6
DUDLEY-CHARLTON REGIONAL	350	63.6	17.6	15.0	32.6	63.2	16.6	19.6	36.2	34.3
DUXBURY	281	65.6	15.9	13.9	29.8	80.0	*	*	16.2	23.5
EAST BRIDGEWATER	177	71.3	*	*	21.3	72.3	*	*	25.3	23.2
EAST LONGMEADOW	225	78.8	9.6	11.5	21.2	90.1	*	*	9.1	14.7
EASTHAMPTON	111	64.2	*	*	35.8	48.3	*	*	48.3	42.3
EASTON	307	68.6	18.9	8.2	27.0	79.1	11.5	6.8	18.2	22.8
EDWARD BROOKE CHARTER (ALL CAMPUSES)	36	75.0	*	*	*	35.0 *	*	*	65.0	47.2
EXCEL ACADEMY CHARTER	53	54.5	*	*	*	45.2	*	*	38.7	34.0
FAIRHAVEN	145	56.0	16.0	22.7	38.7	60.0	14.3	21.4	35.7	37.2
FALL RIVER	888	63.3	11.2	23.9	35.1	51.3	16.0	30.5	46.5	39.2
FALMOUTH	243	60.4	15.8	20.9	36.7	57.7	25.0	14.4	39.4	37.9



**Table 4. Body Mass Index Screening Results for Children in Grade 7 in Massachusetts School Districts, 2010-2011**

School District	Total number of students screened (N)	Males				Females				Males and Females
		Healthy Weight (%)	Over-weight (%)	Obese (%)	Over-weight or Obese (%)	Healthy Weight (%)	Over-weight (%)	Obese (%)	Over-weight or Obese (%)	Over-weight or Obese (%)
FITCHBURG	385	48.6	14.2	35.5	49.7	46.0	21.3	32.2	53.5	51.7
FOUR RIVERS CHARTER	30	*	*	*	*	88.2	*	*	*	*
FOXBOROUGH	215	72.1	13.5	11.7	25.2	76.9	11.5	9.6	21.2	23.3
FRAMINGHAM	271	57.6	16.5	22.3	38.8	60.6	19.7	16.7	36.4	37.6
FRANCIS W PARKER CHARTER	66	67.6	*	*	32.4	71.9	*	*	*	30.3
FREETOWN-LAKEVILLE REGIONAL	234	63.1	18.5	18.5	36.9	65.4	22.1	11.5	33.7	35.5
FRONTIER (SCHOOL UNION 38)	102	58.0	*	*	36.0	59.6	*	*	38.5	37.3
GARDNER	161	53.8	23.1	18.3	41.3	57.9	*	*	40.4	41.0
GATEWAY REGIONAL	78	61.5	*	*	38.5	69.2	*	*	25.6	32.1
GEORGETOWN	126	67.6	*	*	30.9	72.4	*	*	25.9	28.6
GLOUCESTER	202	59.3	15.4	23.1	38.5	61.3	22.5	13.5	36.0	37.1
GLOUCESTER COMMUNITY ARTS CHARTER	25	*	*	*	*	73.3	*	*	*	*
GRAFTON	220	63.5	18.3	14.4	32.7	66.4	15.5	14.7	30.2	31.4
GRANBY	93	64.7	*	*	35.3	69.0	*	*	28.6	32.3
GROTON-DUNSTABLE REGIONAL	216	63.6	20.6	15.0	35.5	78.9	*	*	18.3	26.9
HADLEY	49	60.9	*	*	*	69.2	*	*	*	34.7
HAMILTON-WENHAM REGIONAL	136	85.7	*	*	*	87.7	*	*	*	8.1
HAMPDEN CHARTER SCHOOL OF SCIENCE	46	*	*	*	52.2	65.2	*	*	*	43.5
HAMPDEN-WILBRAHAM REGIONAL	259	68.6	13.1	15.3	28.5	68.0	17.2	12.3	29.5	29.0

**Table 4. Body Mass Index Screening Results for Children in Grade 7 in Massachusetts School Districts, 2010-2011**

School District	Total number of students screened (N)	Males				Females				Males and Females
		Healthy Weight (%)	Over-weight (%)	Obese (%)	Over-weight or Obese (%)	Healthy Weight (%)	Over-weight (%)	Obese (%)	Over-weight or Obese (%)	Over-weight or Obese (%)
HAMPSHIRE (SCHOOL UNION 66)	140	64.5	*	*	28.9	75.0	*	*	25.0	27.1
HARWICH	83	48.9	*	*	48.9	52.6	*	*	47.4	48.2
HATFIELD	33	*	*	*	*	70.6	*	*	*	33.3
HAVERHILL	569	51.9	13.9	31.0	44.9	62.5	17.0	19.8	36.8	41.3
HILL VIEW MONTESSORI CHARTER	32	71.4	*	*	*	44.4 *	*	*	*	40.6
HILLTOWN CHARTER	16	*	*	*	*	*	*	*	*	*
HINGHAM	311	75.6	12.8	9.6	22.4	79.4	11.6	7.1	18.7	20.6
HOLBROOK	99	58.8	*	*	41.2	54.2	*	*	41.7	41.4
HOLLISTON	225	63.1	27.0	9.9	36.9	64.0	21.1	12.3	33.3	35.1
HOLYOKE	354	55.7	15.1	24.5	39.6	50.6	19.8	26.5	46.3	42.7
HOPEDALE	86	66.7	*	*	33.3	74.3	*	*	*	27.9
HOPKINTON	239	74.8	*	*	22.5	83.6	*	*	14.8	18.4
HUDSON	164	54.9	15.9	26.8	42.7	56.1	22.0	20.7	42.7	42.7
HULL #	80	61.7	*	*	36.2	81.8	*	*	*	28.8
INNOVATION ACADEMY CHARTER	100	74.5	*	*	25.5	66.7	*	*	24.4	25.0
KING PHILIP REGIONAL	418	61.7	19.8	18.0	37.8	70.4	18.4	10.7	29.1	33.7
KIPP ACADEMY LYNN CHARTER	84	61.3	*	*	38.7	49.1	22.6	26.4	49.1	45.2
LAWRENCE	998	49.8	16.9	30.9	47.7	46.6	18.9	31.9	50.9	49.2
LAWRENCE FAMILY DEV CHARTER	53	54.5	*	*	45.5	61.3	*	*	38.7	41.5

**Table 4. Body Mass Index Screening Results for Children in Grade 7 in Massachusetts School Districts, 2010-2011**

School District	Total number of students screened (N)	Males				Females				Males and Females
		Healthy Weight (%)	Over-weight (%)	Obese (%)	Over-weight or Obese (%)	Healthy Weight (%)	Over-weight (%)	Obese (%)	Over-weight or Obese (%)	Over-weight or Obese (%)
LEE-TYRINGHAM (SCHOOL UNION 29)	68	79.3	*	*	*	84.6	*	*	*	17.6
LEICESTER	134	59.1	19.7	19.7	39.4	67.6	14.7	14.7	29.4	34.3
LENOX	67	72.4	*	*	*	73.7	*	*	*	23.9
LEOMINSTER	445	49.8	20.0	29.4	49.4	54.3	22.4	21.4	43.8	46.7
LEXINGTON	526	77.3	9.6	6.9	16.5	83.8	6.8	6.0	12.8	14.6
LINCOLN-SUDBURY REGIONAL	487	75.9	12.5	10.3	22.8	79.5	12.5	6.8	19.4	20.9
LITTLETON	134	68.1	*	*	27.8	74.2	*	*	21.0	24.6
LONGMEADOW	222	76.9	9.6	12.5	22.1	76.3	11.9	8.5	20.3	21.2
LOWELL	1,036	52.8	22.3	22.5	44.9	60.8	17.4	19.4	36.8	40.7
LUDLOW	230	52.6	28.4	16.4	44.8	59.6	22.8	13.2	36.0	40.4
LUNENBURG	97	78.0	*	*	*	57.1	*	*	41.1	32.0
LYNN	915	62.5	14.6	17.2	31.8	64.5	13.2	17.3	30.5	31.1
LYNNFIELD	183	58.1	17.4	22.1	39.5	72.2	*	*	24.7	31.7
MALDEN	437	53.7	14.5	29.9	44.4	55.6	18.4	24.7	43.0	43.7
MANCHESTER ESSEX REGIONAL	115	74.5	*	*	23.5	68.8	*	*	26.6	25.2
MANSFIELD	385	61.1	20.2	14.5	34.7	70.8	15.6	9.9	25.5	30.1
MARBLEHEAD	271	66.7	17.0	14.3	31.3	79.8	9.7	8.1	17.7	25.1
MARLBOROUGH	302	55.2	19.0	22.4	41.4	67.2	8.6	24.2	32.8	37.7
MARSHFIELD	352	67.0	15.1	14.0	29.1	74.0	14.5	9.8	24.3	26.7

**Table 4. Body Mass Index Screening Results for Children in Grade 7 in Massachusetts School Districts, 2010-2011**

School District	Total number of students screened (N)	Males				Females				Males and Females
		Healthy Weight (%)	Over-weight (%)	Obese (%)	Over-weight or Obese (%)	Healthy Weight (%)	Over-weight (%)	Obese (%)	Over-weight or Obese (%)	Over-weight or Obese (%)
MARTHAS VINEYARD (UNION 19)	156	65.0	12.5	20.0	32.5	75.0	*	*	22.4	27.6
MARTHA'S VINEYARD CHARTER MASCONOMET (AND TRI-TOWN SCHOOL UNION)	19	*	*	*	*	80.0*	*	*	*	*
	376	70.0	10.5	12.6	23.2	75.8	11.8	9.7	21.5	22.3
MASHPEE	122	73.1	*	*	23.9	58.2	*	*	40.0	31.1
MAYNARD	96	63.0	*	*	37.0	64.0	*	*	36.0	36.5
MEDFIELD	235	76.0	*	*	19.2	86.4	*	*	*	13.6
MEDFORD	346	59.1	18.2	19.7	37.9	58.8	20.3	18.2	38.5	38.2
MEDIA & TECH CHARTER	56	47.2	*	*	50.0	45.0*	*	*	55.0	51.8
MEDWAY	209	68.1	16.0	11.7	27.7	69.6	18.3	11.3	29.6	28.7
MENDON-UPTON REGIONAL	174	66.3	16.8	13.7	30.5	78.5	*	*	17.7	24.7
METHUEN	577	55.9	20.3	20.3	40.6	62.5	17.2	17.6	34.8	37.6
MIDDLEBOROUGH	269	59.5	17.7	15.8	33.5	68.5	19.8	9.0	28.8	31.6
MILFORD	307	58.2	17.0	20.3	37.3	57.1	18.8	22.1	40.9	39.1
MILLBURY	131	55.6	*	*	40.3	69.5	*	*	28.8	35.1
MILLIS	98	60.4	*	*	35.4	76.0	*	*	24.0	29.6
MILTON	244	67.5	17.5	11.1	28.6	73.7	*	*	22.9	25.8
MOHAWK TRAIL REGIONAL	84	72.1	*	*	27.9	58.5	*	*	39.0	33.3
MONSON	111	70.0	*	*	28.3	76.5	*	*	23.5	26.1
NANTUCKET	95	65.4	*	*	32.7	48.8	*	*	48.8	40.0

**Table 4. Body Mass Index Screening Results for Children in Grade 7 in Massachusetts School Districts, 2010-2011**

School District	Total number of students screened (N)	Males				Females				Males and Females
		Healthy Weight (%)	Over-weight (%)	Obese (%)	Over-weight or Obese (%)	Healthy Weight (%)	Over-weight (%)	Obese (%)	Over-weight or Obese (%)	Over-weight or Obese (%)
NARRAGANSETT REGIONAL	123	48.4	25.0	21.9	46.9	67.8	*	*	32.2	39.8
NASHOBA REGIONAL	274	69.7	10.3	13.8	24.1	72.9	14.7	10.9	25.6	24.8
NATICK	337	71.1	13.9	10.2	24.1	74.9	11.7	11.7	23.4	23.7
NAUSET (SCHOOL UNION 54)	189	64.0	18.6	17.4	36.0	75.7	11.7	11.7	23.3	29.1
NEEDHAM	409	70.8	12.8	7.7	20.5	79.9	10.7	4.7	15.4	17.8
NEW BEDFORD	938	49.9	17.0	28.0	45.0	56.1	19.3	21.8	41.1	43.1
NEWBURYPORT	170	68.5	19.1	11.2	30.3	65.4	16.0	16.0	32.1	31.2
NEWTON	818	68.1	17.0	10.8	27.8	78.3	14.5	5.6	20.0	23.7
NORTH ANDOVER	371	67.5	18.7	12.7	31.3	74.1	14.1	9.3	23.4	27.0
NORTH ATTLEBOROUGH	377	60.9	16.7	19.3	35.9	65.9	19.5	14.1	33.5	34.7
NORTH CENTRAL CHARTER ESSENTIAL	39	63.6	*	*	*	64.7	*	*	*	35.9
NORTH MIDDLESEX REGIONAL	304	68.2	15.3	12.7	28.0	69.4	15.0	14.3	29.3	28.6
NORTH READING	189	75.0	10.6	10.6	21.2	67.1	18.8	12.9	31.8	25.9
NORTH RIVER COLLABORATIVE	*	*	*	*	*	*	*	*	*	*
NORTHAMPTON	160	62.0	16.9	15.5	32.4	65.2	11.2	15.7	27.0	29.4
NORTHBORO-SOUTHBORO (UNION 3)	398	72.4	15.1	9.5	24.6	73.4	14.6	9.0	23.6	24.1
NORTHBRIDGE	183	62.1	11.6	24.2	35.8	67.0	*	*	30.7	33.3
NORTHERN BERKSHIRE (UNION 43)	34	55.6	*	*	*	75.0	*	*	*	32.4
NORTON	238	63.9	16.0	13.4	29.4	74.8	10.9	13.4	24.4	26.9

**Table 4. Body Mass Index Screening Results for Children in Grade 7 in Massachusetts School Districts, 2010-2011**

School District	Total number of students screened (N)	Males				Females				Males and Females
		Healthy Weight (%)	Over-weight (%)	Obese (%)	Over-weight or Obese (%)	Healthy Weight (%)	Over-weight (%)	Obese (%)	Over-weight or Obese (%)	Over-weight or Obese (%)
NORWELL	205	75.0	13.0	10.0	23.0	80.0	*	*	19.0	21.0
NORWOOD	253	74.6	12.3	13.1	25.4	73.2	13.8	11.4	25.2	25.3
OLD ROCHESTER (UNION 55)	221	64.5	18.5	12.9	31.5	70.1	16.5	10.3	26.8	29.4
OXFORD	129	47.0	22.7	25.8	48.5	60.3	*	*	38.1	43.4
PALMER	126	59.7	19.4	20.9	40.3	47.5	23.7	27.1	50.8	45.2
PEABODY	483	50.6	23.2	23.7	46.9	57.9	24.0	14.0	38.0	42.4
PEMBROKE	322	60.5	25.7	11.8	37.5	60.0	22.4	5.9	28.2	32.6
PENTUCKET REGIONAL	260	64.8	10.9	19.5	30.5	69.7	13.6	13.6	27.3	28.8
PILGRIM AREA COLLABORATIVE	17	*	*	*	*	*	*	*	*	*
PIONEER CHARTER SCHOOL OF SCIENCE	45	48.0	*	*	52.0	40.0*	*	*	60.0	55.6
PIONEER VALLEY CHINESE IMMERSION CHARTER	*	*	*	*	*	*	*	*	*	*
PIONEER VALLEY PERF ARTS CHARTER	65	52.4	*	*	*	61.4	*	*	36.4	38.5
PIONEER VALLEY REGIONAL	105	51.1	23.4	23.4	46.8	65.5	*	*	31.0	38.1
PITTSFIELD	425	65.8	13.9	10.4	24.2	60.8	18.0	14.9	33.0	28.2
PLYMOUTH	561	55.6	16.4	24.7	41.1	65.4	15.6	15.6	31.1	36.5
QUABBIN REGIONAL	208	64.5	25.2	9.3	34.6	57.4	19.8	15.8	35.6	35.1
QUABOAG REGIONAL	107	59.6	21.2	19.2	40.4	47.3	*	*	49.1	44.9
QUINCY	605	60.6	16.1	18.7	34.8	63.1	16.6	17.3	33.9	34.4
RALPH C MAHAR REGIONAL	110	50.0	17.2	27.6	44.8	67.3	*	*	32.7	39.1

**Table 4. Body Mass Index Screening Results for Children in Grade 7 in Massachusetts School Districts, 2010-2011**

School District	Total number of students screened (N)	Males				Females				Males and Females
		Healthy Weight (%)	Over-weight (%)	Obese (%)	Over-weight or Obese (%)	Healthy Weight (%)	Over-weight (%)	Obese (%)	Over-weight or Obese (%)	Over-weight or Obese (%)
RANDOLPH	252	51.1	17.5	30.7	48.2	54.8	20.0	25.2	45.2	46.8
READS COLLABORATIVE	*	*	*	*	*	*	*	*	*	*
REVERE	504	47.0	20.5	29.5	50.0	59.3	19.1	19.5	38.6	44.6
RICHMOND	23	83.3	*	*	*	63.6*	*	*	*	*
RISING TIDE CHARTER	72	55.8	*	*	41.9	55.2	*	*	41.4	41.7
RIVER VALLEY CHARTER	33	70.6	*	*	*	87.5	*	*	*	*
ROCKLAND	173	53.2	21.3	24.5	45.7	68.4	*	*	31.6	39.3
ROCKPORT	82	69.4	*	*	28.6	72.7	*	*	*	23.2
SABIS FOXBORO REG'L CHARTER	98	41.7	22.9	27.1	50.0	58.0	*	*	38.0	43.9
SABIS INTERNATIONAL	125	57.1	19.6	23.2	42.9	46.4	33.3	18.8	52.2	48.0
SALEM	249	54.2	16.0	26.0	42.0	65.3	17.8	13.6	31.4	36.9
SALEM ACADEMY CHARTER	55	56.0	*	*	40.0	60.0	*	*	40.0	40.0
SANDWICH	289	69.6	13.0	14.3	27.3	75.8	15.6	8.6	24.2	26.0
SAUGUS	208	54.9	17.6	26.5	44.1	56.6	22.6	15.1	37.7	40.9
SCITUATE	271	71.2	15.9	9.8	25.8	77.0	12.2	7.9	20.1	22.9
SEEKONK	163	56.4	17.9	20.5	38.5	57.6	*	*	35.3	36.8
SHARON	248	72.3	*	*	25.2	76.0	14.7	7.8	22.5	23.8
SHREWSBURY	450	60.9	20.9	15.1	36.0	71.1	16.4	10.7	27.1	31.6
SILVER LAKE (SCHOOL UNION 31)	135	73.5	*	*	26.5	67.3	*	*	30.8	28.1

**Table 4. Body Mass Index Screening Results for Children in Grade 7 in Massachusetts School Districts, 2010-2011**

School District	Total number of students screened (N)	Males				Females				Males and Females
		Healthy Weight (%)	Over-weight (%)	Obese (%)	Over-weight or Obese (%)	Healthy Weight (%)	Over-weight (%)	Obese (%)	Over-weight or Obese (%)	Over-weight or Obese (%)
SOMERSET BERKLEY REGIONAL	293	52.9	21.6	23.5	45.1	70.0	15.0	15.0	30.0	37.9
SOMERVILLE	374	53.7	20.6	22.9	43.5	57.5	21.9	17.5	39.4	41.7
SOUTH HADLEY	143	56.6	23.7	17.1	40.8	67.2	*	*	31.3	36.4
SOUTH SHORE CHARTER	45	68.0	*	*	*	60.0	*	*	*	35.6
SOUTH SHORE EDUCATIONAL COLLAB.	*	*	*	*	*	*	*	*	*	*
SOUTHBRIDGE	155	44.4	21.1	34.4	55.6	64.6	*	*	32.3	45.8
SOUTHERN BERKSHIRE REGIONAL	43	64.0	*	*	*	44.4 *	*	*	55.6	41.9
SOUTHWICK-TOLLAND REGIONAL	131	55.0	*	*	43.3	66.2	*	*	31.0	36.6
SPENCER-E BROOKFIELD REGIONAL	173	63.3	16.3	19.4	35.7	57.3	22.7	18.7	41.3	38.2
SPIRIT OF KNOWLEDGE ACADEMY CHARTER	46	45.5	*	*	54.5	62.5	*	*	*	45.7
SPRINGFIELD	1,632	53.6	17.8	26.4	44.1	51.6	22.4	24.5	46.9	45.5
STONEHAM	201	56.7	21.7	14.2	35.8	60.5	21.0	16.0	37.0	36.3
STOUGHTON	281	60.7	11.3	24.7	36.0	55.7	16.0	26.7	42.7	39.1
SUTTON	95	60.0	*	*	36.4	60.0	*	*	35.0	35.8
SWAMPSCOTT (INCLUDING NAHANT)	176	65.3	14.3	10.2	24.5	67.9	*	*	26.9	25.6
SWANSEA	157	57.1	20.9	22.0	42.9	57.6	19.7	19.7	39.4	41.4
TANTASQUA (SCHOOL UNION 61)	320	59.3	14.7	24.7	39.3	65.3	11.8	21.2	32.9	35.9
TAUNTON	715	66.1	15.2	16.1	31.3	63.8	15.0	19.3	34.3	32.9
TEWKSBURY	356	58.9	16.6	22.7	39.3	58.0	20.2	18.7	38.9	39.0



**Table 4. Body Mass Index Screening Results for Children in Grade 7 in Massachusetts School Districts, 2010-2011**

School District	Total number of students screened (N)	Males				Females				Males and Females
		Healthy Weight (%)	Over-weight (%)	Obese (%)	Over-weight or Obese (%)	Healthy Weight (%)	Over-weight (%)	Obese (%)	Over-weight or Obese (%)	Over-weight or Obese (%)
THE EDUCATION COOPERATIVE	*	*	*	*	*	*	*	*	*	*
TRITON REGIONAL	203	63.4	18.8	13.9	32.7	65.7	12.7	17.6	30.4	31.5
TYNGSBOROUGH	158	50.7	17.4	23.2	40.6	64.0	24.7	11.2	36.0	38.0
UXBRIDGE	159	74.1	*	*	22.2	66.7	*	*	30.8	26.4
WINTHROP	126	50.0	*	*	43.3	53.0	22.7	18.2	40.9	42.1
WOBURN	365	55.7	16.4	26.2	42.6	58.8	18.7	21.4	40.1	41.4
WORCESTER	1,471	65.0	15.9	15.9	31.8	62.2	17.7	17.1	34.8	33.2

Definitions: *Underweight* – BMI for age percentile < 5<sup>th</sup> percentile; *Healthy weight* – BMI for age percentile between 5<sup>th</sup> and 85<sup>th</sup> percentile; *Overweight* – BMI for age percentile between 85<sup>th</sup> and 95<sup>th</sup> percentile; *Obese* – BMI for age percentile ≥ 95<sup>th</sup> percentile.

Notes: Data that did not pass data quality tests were excluded from the analysis.

\* Data is suppressed due to the small number of individuals in this cell.

# There is an unusual variation between this year's data and the prior year's data.

**Table 5. Body Mass Index Screening Results for Children in Grade 10 in Massachusetts School Districts, 2011-2012**

School District	Total number of students screened (N)	Males				Females				Males and Females
		Healthy Weight (%)	Over-weight (%)	Obese (%)	Over-weight or Obese (%)	Healthy Weight (%)	Over-weight (%)	Obese (%)	Over-weight or Obese (%)	Over-weight or Obese (%)
<b>TOTAL</b>	<b>58,142</b>	<b>63.6</b>	<b>16.2</b>	<b>18.0</b>	<b>34.2</b>	<b>69.4</b>	<b>16.1</b>	<b>13.1</b>	<b>29.2</b>	<b>31.8</b>
ABINGTON	82	56.8	*	*	43.2	63.2	*	*	34.2	39.0
ACADEMY OF PACIFIC RIM CHARTER	40	*	*	*	71.4	52.6	*	*	*	55.0
ACCEPT EDUCATION COLLABORATIVE	*	*	*	*	*	*	*	*	*	*
ACTON-BOXBOROUGH REGIONAL	443	76.6	12.7	7.8	20.5	85.3	8.0	5.9	13.9	16.9
ADAMS-CHESHIRE REGIONAL	87	61.9	*	*	35.7	71.1	*	*	28.9	32.2
ADVANCED MATH AND SCIENCE ACADEMY CHARTER	103	75.4	*	*	24.6	82.6	*	*	*	21.4
AMESBURY	143	57.5	21.9	17.8	39.7	78.6	*	*	21.4	30.8
AMHERST-PELHAM (SCHL UNION 26)	238	72.2	14.8	8.7	23.5	75.6	*	*	22.8	23.1
ANDOVER	424	77.3	12.5	7.9	20.4	80.3	*	*	17.3	18.9
ARLINGTON	230	75.9	*	*	23.1	77.0	*	*	21.3	22.2
ASHBURNHAM-WESTMINSTER REG	147	62.2	14.9	21.6	36.5	79.5	*	*	19.2	27.9
ASHLAND	184	62.4	19.8	14.9	34.7	71.1	*	*	27.7	31.5
ASSABET VALLEY VOC TECH REG	250	60.8	16.1	21.7	37.8	55.1	21.5	21.5	43.0	40.0
ATHOL-ROYALSTON REGIONAL	64	73.5	*	*	*	53.3	*	*	46.7	34.4
ATTLEBORO	410	52.2	18.7	27.3	45.9	62.7	23.4	13.4	36.8	41.5
AUBURN	171	48.9	22.2	27.8	50.0	79.0	*	*	21.0	36.3
AVON	45	62.5	*	*	*	85.7	*	*	*	26.7

**Table 5. Body Mass Index Screening Results for Children in Grade 10 in Massachusetts School Districts, 2011-2012**

School District	Total number of students screened (N)	Males				Females				Males and Females
		Healthy Weight (%)	Over-weight (%)	Obese (%)	Over-weight or Obese (%)	Healthy Weight (%)	Over-weight (%)	Obese (%)	Over-weight or Obese (%)	Over-weight or Obese (%)
AYER SHIRLEY REGIONAL	72	54.8	*	*	42.9	66.7	*	*	33.3	38.9
BARNSTABLE	299	62.7	17.0	19.0	35.9	67.8	15.8	15.1	30.8	33.4
BEDFORD	196	68.3	15.8	14.9	30.7	74.7	11.6	12.6	24.2	27.6
BELCHERTOWN	198	64.9	16.0	16.0	31.9	70.2	17.3	11.5	28.8	30.3
BELLINGHAM	154	69.8	16.3	11.6	27.9	63.2	*	*	36.8	31.8
BELMONT	272	69.8	14.4	10.1	24.5	82.0	*	*	16.5	20.6
BERKSHIRE ARTS AND TECHNOLOGY CHARTER	24	*	*	*	*	61.1	*	*	*	*
BERKSHIRE HILLS REGIONAL	123	63.9	18.1	18.1	36.1	78.4	*	*	19.6	29.3
BERLIN BOYLSTON (SCHL UNION 60)	61	69.7	*	*	*	75.0	*	*	*	23.0
BEVERLY	253	64.8	18.4	16.0	34.4	74.2	16.4	8.6	25.0	29.6
BI-COUNTY COLLABORATIVE (BICO)	22	*	*	*	71.4	*	*	*	*	68.2
BILLERICA	367	61.7	13.0	22.2	35.2	63.9	22.4	11.7	34.1	34.6
BLACKSTONE VALLEY VOC TECH REG	254	58.8	14.9	23.6	38.5	67.9	18.9	12.3	31.1	35.4
BLACKSTONE-MILLVILLE REGIONAL	119	75.0	*	*	23.4	67.3	*	*	29.1	26.1
BLUE HILLS VOC TECH REG	209	70.4	16.5	12.2	28.7	74.5	13.8	11.7	25.5	27.3
BOSTON	2,070	59.7	15.4	21.9	37.3	64.0	16.9	17.4	34.3	35.8
BOURNE	110	60.7	*	*	34.4	69.4	*	*	30.6	32.7
BRAINTREE	363	66.2	14.9	17.4	32.3	72.0	17.9	10.1	28.0	30.3
BRIDGEWATER-RAYNHAM REGIONAL	373	60.6	16.1	21.2	37.3	72.8	13.9	12.2	26.1	31.9

**Table 5. Body Mass Index Screening Results for Children in Grade 10 in Massachusetts School Districts, 2011-2012**

School District	Total number of students screened (N)	Males				Females				Males and Females
		Healthy Weight (%)	Over-weight (%)	Obese (%)	Over-weight or Obese (%)	Healthy Weight (%)	Over-weight (%)	Obese (%)	Over-weight or Obese (%)	Over-weight or Obese (%)
BRISTOL COUNTY AGR	109	47.2	*	*	47.2	60.3	15.1	23.3	38.4	41.3
BRISTOL-PLYMOUTH VOC TECH REG	311	54.7	17.7	26.5	44.2	60.0	16.2	23.8	40.0	42.4
BROCKTON	915	62.0	14.5	21.1	35.6	56.5	17.7	24.7	42.4	38.9
BROOKLINE	640	77.6	14.1	4.5	18.6	82.9	11.0	5.5	16.5	17.5
BURLINGTON	226	66.1	18.1	9.4	27.6	74.7	*	*	20.2	24.3
CAMBRIDGE	306	67.9	15.4	16.0	31.5	75.0	14.6	10.4	25.0	28.4
CANTON	204	62.7	20.5	14.5	34.9	67.8	19.8	9.9	29.8	31.9
CAPE COD COLLABORATIVE	*	*	*	*	*	*	*	*	*	*
CAPE COD REGION VOC TECH REG	171	67.9	9.8	22.3	32.1	61.0	18.6	20.3	39.0	34.5
CAPS EDUCATIONAL COLLAB.	11	*	*	*	*	*	*	*	*	*
CARVER	97	82.7	*	*	*	73.3	*	*	26.7	21.6
CENTRAL BERKSHIRE REGIONAL	123	64.3	*	*	30.0	67.9	*	*	30.2	30.1
CHATHAM	33	69.6	*	*	*	*	*	*	*	30.3
CHELMSFORD	371	64.6	14.1	18.8	32.8	72.6	14.0	11.7	25.7	29.4
CHICOPEE	655	56.8	21.0	21.6	42.6	52.8	25.2	21.2	46.3	44.4
CITY ON A HILL CHARTER	46	63.6	*	*	*	50.0	*	*	45.8	34.8
CLINTON	92	59.2	*	*	38.8	65.1	*	*	34.9	37.0
CODMAN ACADEMY CHARTER	41	62.5	*	*	*	*	*	*	*	31.7
COHASSET	96	77.2	*	*	22.8	84.6	*	*	*	19.8

**Table 5. Body Mass Index Screening Results for Children in Grade 10 in Massachusetts School Districts, 2011-2012**

School District	Total number of students screened (N)	Males				Females				Males and Females
		Healthy Weight (%)	Over-weight (%)	Obese (%)	Over-weight or Obese (%)	Healthy Weight (%)	Over-weight (%)	Obese (%)	Over-weight or Obese (%)	Over-weight or Obese (%)
COLLABORATIVE FOR EDUCATIONAL SERVICES	13	*	*	*	*	*	*	*	*	*
COMMUNITY CHARTER SCHOOL OF CAMBRIDGE	43	62.5	*	*	*	57.9	*	*	*	39.5
CONCORD-CARLISLE REGIONAL	283	72.9	13.6	9.3	22.9	88.5	*	*	11.5	16.3
DANVERS	235	76.7	*	*	23.3	77.3	*	*	21.8	22.6
DARTMOUTH	300	61.1	15.9	21.7	37.6	67.8	16.1	15.4	31.5	34.7
DEDHAM	198	48.6	15.6	34.9	50.5	73.0	*	*	24.7	38.9
DENNIS-YARMOUTH REGIONAL	174	57.9	18.9	21.1	40.0	72.2	12.7	13.9	26.6	33.9
DIGHTON-REHOBOTH REGIONAL	201	69.1	*	*	29.1	67.0	17.6	13.2	30.8	29.9
DOUGLAS	124	75.4	*	*	23.0	81.0	*	*	15.9	19.4
DOVER-SHERBORN (SCHL UNION 50)	160	77.6	*	*	18.4	79.8	*	*	20.2	19.4
DRACUT	272	53.8	16.6	27.6	44.1	64.6	19.7	15.7	35.4	40.1
DUDLEY-CHARLTON REGIONAL	274	69.7	19.3	10.9	30.3	69.7	16.8	11.0	27.7	28.8
DUXBURY	226	72.6	*	*	25.0	86.3	*	*	13.7	19.9
EAST BRIDGEWATER	125	54.0	19.0	23.8	42.9	71.0	*	*	29.0	36.0
EAST LONGMEADOW	211	60.9	21.8	16.4	38.2	80.2	*	*	19.8	29.4
EASTHAMPTON	111	60.4	*	*	35.8	65.5	17.2	17.2	34.5	35.1
EASTON	299	62.6	20.4	16.3	36.7	73.7	15.8	9.9	25.7	31.1
ESSEX AGR TECH	105	76.2	*	*	23.8	58.7	*	*	36.5	31.4
FAIRHAVEN	115	67.3	*	*	32.7	68.3	*	*	30.2	31.3

**Table 5. Body Mass Index Screening Results for Children in Grade 10 in Massachusetts School Districts, 2011-2012**

School District	Total number of students screened (N)	Males				Females				Males and Females
		Healthy Weight (%)	Over-weight (%)	Obese (%)	Over-weight or Obese (%)	Healthy Weight (%)	Over-weight (%)	Obese (%)	Over-weight or Obese (%)	Over-weight or Obese (%)
FALL RIVER	420	52.0	22.4	23.3	45.7	56.9	17.3	24.9	42.1	44.0
FITCHBURG	227	57.8	14.7	26.6	41.3	58.5	21.2	19.5	40.7	41.0
FOUR RIVERS CHARTER	34	86.7	*	*	*	73.7	*	*	*	*
FOXBOROUGH	180	68.8	16.3	13.8	30.0	74.0	10.0	14.0	24.0	26.7
FRAMINGHAM	505	57.9	21.0	18.0	39.1	70.6	16.5	11.4	27.9	33.1
FRANCIS W PARKER CHARTER	70	73.2	*	*	26.8	82.8	*	*	*	22.9
FRANKLIN COUNTY VOC TECH REG	123	48.8	28.8	16.3	45.0	55.8	*	*	37.2	42.3
FREETOWN-LAKEVILLE REGIONAL	154	61.1	23.6	15.3	38.9	76.8	*	*	22.0	29.9
FRONTIER (SCHOOL UNION 38)	95	61.9	*	*	33.3	73.6	*	*	22.6	27.4
GARDNER	108	66.7	*	*	33.3	75.9	*	*	24.1	28.7
GATEWAY REGIONAL	72	72.4	*	*	*	72.1	*	*	27.9	27.8
GEORGETOWN	113	76.9	*	*	23.1	85.2	*	*	*	16.8
GLOUCESTER	261	52.3	16.2	29.2	45.4	71.8	13.7	13.7	27.5	36.4
GRAFTON	176	62.2	13.4	20.7	34.1	68.1	21.3	10.6	31.9	33.0
GRANBY	88	65.9	*	*	31.7	68.1	*	*	31.9	31.8
GREATER LAWRENCE VOC TECH REG	326	55.4	15.5	28.0	43.5	49.4	24.7	25.3	50.0	46.6
GREATER LOWELL VOC TECH REG	491	55.2	12.1	31.7	43.8	53.8	20.0	25.7	45.7	44.6
GROTON-DUNSTABLE REGIONAL	206	77.9	*	*	21.1	82.9	*	*	16.2	18.4
HADLEY	45	55.0	*	*	*	76.0	*	*	*	28.9

**Table 5. Body Mass Index Screening Results for Children in Grade 10 in Massachusetts School Districts, 2011-2012**

School District	Total number of students screened (N)	Males				Females				Males and Females
		Healthy Weight (%)	Over-weight (%)	Obese (%)	Over-weight or Obese (%)	Healthy Weight (%)	Over-weight (%)	Obese (%)	Over-weight or Obese (%)	Over-weight or Obese (%)
HAMILTON-WENHAM REGIONAL	173	74.1	*	*	22.2	79.3	*	*	18.5	20.2
HAMPDEN CHARTER SCHOOL OF SCIENCE	31	*	*	*	*	*	*	*	*	45.2
HAMPDEN-WILBRAHAM REGIONAL	298	62.6	21.8	13.6	35.4	69.5	17.2	10.6	27.8	31.5
HAMPSHIRE (SCHOOL UNION 66)	127	64.6	*	*	35.4	74.7	*	*	25.3	29.1
HARWICH	71	70.6	*	*	29.4	75.7	*	*	*	26.8
HATFIELD	29	58.8	*	*	*	*	*	*	*	41.4
HAVERHILL	555	61.2	15.5	20.9	36.3	61.4	17.3	19.1	36.5	36.4
HINGHAM	244	68.3	19.0	8.7	27.8	84.7	*	*	15.3	21.7
HOLBROOK	73	51.2	24.4	24.4	48.8	59.4	*	*	40.6	45.2
HOLLISTON	219	64.6	22.1	11.5	33.6	73.6	*	*	25.5	29.7
HOLYOKE	413	58.5	15.0	25.0	40.0	64.8	19.7	15.5	35.2	37.5
HOPEDALE	77	72.2	*	*	*	68.3	*	*	31.7	28.6
HOPKINTON	265	73.7	12.0	11.3	23.3	70.5	*	*	28.8	26.0
HUDSON	169	67.5	16.3	15.0	31.3	70.8	*	*	25.8	28.4
HULL #	87	76.6	*	*	23.4	77.5	*	*	*	23.0
INNOVATION ACADEMY CHARTER	56	72.7	*	*	*	73.9	*	*	*	25.0
IPSWICH	168	90.1	*	*	*	75.9	*	*	20.7	14.3
KING PHILIP REGIONAL	352	78.8	11.8	8.8	20.6	83.5	9.9	6.0	15.9	18.2
LABBB COLLABORATIVE	17	*	*	*	76.9	*	*	*	*	64.7

**Table 5. Body Mass Index Screening Results for Children in Grade 10 in Massachusetts School Districts, 2011-2012**

School District	Total number of students screened (N)	Males				Females				Males and Females
		Healthy Weight (%)	Over-weight (%)	Obese (%)	Over-weight or Obese (%)	Healthy Weight (%)	Over-weight (%)	Obese (%)	Over-weight or Obese (%)	Over-weight or Obese (%)
LAWRENCE	659	56.0	14.8	27.8	42.6	56.0	18.6	24.8	43.3	42.9
LEE-TYRINGHAM (SCHOOL UNION 29)	85	75.0	*	*	*	64.4	*	*	28.9	24.7
LEICESTER	111	56.4	*	*	41.8	58.9	*	*	37.5	39.6
LENOX	71	76.0	*	*	*	78.3	*	*	21.7	22.5
LEOMINSTER	412	55.6	15.0	26.2	41.1	65.2	18.2	13.6	31.8	36.7
LEXINGTON	412	70.9	19.2	7.0	26.3	87.9	*	*	10.6	18.7
LINCOLN-SUDBURY REGIONAL	396	67.5	10.2	18.3	28.4	81.9	11.1	6.5	17.6	23.0
LITTLETON	94	73.9	*	*	26.1	75.0	*	*	22.9	24.5
LONGMEADOW	55	80.6	*	*	*	75.0	*	*	*	21.8
LOWELL	165	54.1	13.5	31.1	44.6	65.9	18.7	14.3	33.0	38.2
LOWELL MIDDLESEX ACAD CHARTER	15	*	*	*	*	*	*	*	*	*
LUDLOW	271	58.8	14.5	24.4	38.9	66.4	16.4	15.7	32.1	35.4
LUNENBURG	120	47.5	26.2	24.6	50.8	59.3	*	*	37.3	44.2
LYNN	787	58.3	24.3	15.6	39.9	57.3	21.2	19.2	40.4	40.2
LYNNFIELD	149	62.5	16.7	19.4	36.1	75.3	*	*	24.7	30.2
MALDEN	392	58.1	13.8	24.1	37.9	66.7	15.9	16.4	32.3	35.2
MANCHESTER ESSEX REGIONAL	120	64.9	*	*	33.3	81.0	*	*	17.5	25.0
MANSFIELD	349	71.7	15.1	8.8	23.9	72.1	16.8	8.4	25.3	24.6
MARBLEHEAD	248	73.4	14.1	10.9	25.0	78.3	*	*	19.2	22.2



**Table 5. Body Mass Index Screening Results for Children in Grade 10 in Massachusetts School Districts, 2011-2012**

School District	Total number of students screened (N)	Males				Females				Males and Females
		Healthy Weight (%)	Over-weight (%)	Obese (%)	Over-weight or Obese (%)	Healthy Weight (%)	Over-weight (%)	Obese (%)	Over-weight or Obese (%)	Over-weight or Obese (%)
MARLBOROUGH	195	54.8	20.9	21.7	42.6	66.3	20.0	12.5	32.5	38.5
MARSHFIELD	336	71.0	14.8	10.1	24.9	77.8	12.0	9.0	21.0	22.9
MARTHAS VINEYARD (UNION 19)	150	69.3	*	*	26.7	76.0	*	*	22.7	24.7
MARTHA'S VINEYARD CHARTER MASCONOMET (AND TRI-TOWN SCHOOL UNION)	*	*	*	*	*	*	*	*	*	*
	345	70.2	14.3	13.0	27.3	81.0	*	*	17.9	22.3
MASHPEE	83	63.2	*	*	34.2	57.8	*	*	37.8	36.1
MAYNARD	83	55.0	*	*	42.5	81.4	*	*	*	30.1
MEDFIELD	232	75.2	13.2	10.7	24.0	89.2	*	*	10.8	17.7
MEDFORD	355	63.2	19.5	14.2	33.7	63.6	21.2	12.7	33.9	33.8
MEDWAY	181	69.3	13.9	13.9	27.7	81.3	*	*	17.5	23.2
MELROSE	159	62.4	24.8	12.9	37.6	46.6	27.6	22.4	50.0	42.1
MENDON-UPTON REGIONAL	160	65.1	12.0	16.9	28.9	75.3	*	*	23.4	26.3
METHUEN	334	63.4	11.9	22.8	34.7	72.0	7.6	18.2	25.8	31.1
MIDDLEBOROUGH	190	61.0	21.0	14.3	35.2	61.2	25.9	12.9	38.8	36.8
MILFORD	228	54.6	25.0	18.5	43.5	90.0	*	*	10.0	25.9
MILLBURY	124	55.1	*	*	42.0	67.3	*	*	32.7	37.9
MILLIS	110	75.5	*	*	24.5	75.4	*	*	22.8	23.6
MILTON	227	89.1	*	*	10.9	79.8	*	*	11.1	11.0
MINUTEMAN VOC TECH REG	179	59.3	23.6	15.4	39.0	55.4	*	*	41.1	39.7

**Table 5. Body Mass Index Screening Results for Children in Grade 10 in Massachusetts School Districts, 2011-2012**

School District	Total number of students screened (N)	Males				Females				Males and Females
		Healthy Weight (%)	Over-weight (%)	Obese (%)	Over-weight or Obese (%)	Healthy Weight (%)	Over-weight (%)	Obese (%)	Over-weight or Obese (%)	Over-weight or Obese (%)
MOHAWK TRAIL REGIONAL	76	81.4	*	*	*	84.8	*	*	*	17.1
MONSON	80	70.0	*	*	27.5	70.0	*	*	27.5	27.5
MONTACHUSETT VOC TECH REG	357	55.4	21.3	21.8	43.1	59.4	14.2	25.2	39.4	41.5
NANTUCKET	88	74.4	*	*	25.6	66.7	*	*	33.3	29.5
NARRAGANSETT REGIONAL	99	52.5	*	*	47.5	66.1	*	*	33.9	39.4
NASHOBA REGIONAL	211	69.7	17.4	11.9	29.4	86.3	*	*	13.7	21.8
NASHOBA VALLEY VOC TECH REG	125	49.2	23.1	27.7	50.8	55.0	18.3	25.0	43.3	47.2
NATICK	301	65.0	16.3	16.9	33.1	70.9	17.0	11.3	28.4	30.9
NAUSET (SCHOOL UNION 54)	241	65.8	18.3	15.0	33.3	70.2	16.5	12.4	28.9	31.1
NEEDHAM	411	71.4	*	*	26.2	80.1	*	*	16.4	21.4
NEW BEDFORD	493	68.4	6.3	22.7	29.0	63.4	8.5	25.4	33.9	31.2
NEWBURYPORT	157	60.4	18.7	16.5	35.2	63.6	*	*	31.8	33.8
NEWTON	789	73.3	16.0	8.8	24.8	81.6	8.4	8.9	17.3	21.3
NORFOLK COUNTY AGR	120	58.1	*	*	41.9	63.6	20.8	15.6	36.4	38.3
NORTH ADAMS	87	59.5	*	*	40.5	71.1	*	*	28.9	34.5
NORTH ANDOVER	330	69.8	14.3	13.7	28.0	75.0	15.5	8.8	24.3	26.4
NORTH ATTLEBOROUGH	255	70.7	14.3	12.8	27.1	67.2	19.7	11.5	31.1	29.0
NORTH CENTRAL CHARTER ESSENTIAL	48	55.6	*	*	40.7	*	*	*	52.4	45.8
NORTH MIDDLESEX REGIONAL	241	62.9	13.6	22.7	36.4	66.1	17.4	15.6	33.0	34.9

**Table 5. Body Mass Index Screening Results for Children in Grade 10 in Massachusetts School Districts, 2011-2012**

School District	Total number of students screened (N)	Males				Females				Males and Females
		Healthy Weight (%)	Over-weight (%)	Obese (%)	Over-weight or Obese (%)	Healthy Weight (%)	Over-weight (%)	Obese (%)	Over-weight or Obese (%)	Over-weight or Obese (%)
NORTH READING	171	71.4	*	*	28.6	71.3	14.9	12.8	27.7	28.1
NORTH RIVER COLLABORATIVE	12	*	*	*	*	*	*	*	*	*
NORTH SHORE VOC TECH REG	114	46.9	26.6	26.6	53.1	66.0	*	*	32.0	43.9
NORTHAMPTON	221	70.1	11.2	15.0	26.2	72.8	13.2	14.0	27.2	26.7
NORTHAMPTON-SMITH VOC	111	47.8	15.9	33.3	49.3	47.6	26.2	26.2	52.4	50.5
NORTHBORO-SOUTHBORO (UNION 3)	356	74.0	17.2	7.7	24.9	77.5	11.8	8.0	19.8	22.2
NORTHBRIDGE	182	64.4	17.2	18.4	35.6	64.2	18.9	16.8	35.8	35.7
NORTHEAST METRO VOC TECH REG	317	52.5	13.1	33.3	46.4	47.0	27.6	24.6	52.2	48.9
NORTHERN BERKSHIRE VOC TECH REG	124	61.4	*	*	38.6	50.7	31.3	16.4	47.8	43.5
NORTON	178	65.9	14.6	17.1	31.7	72.9	14.6	12.5	27.1	29.2
NORWELL	148	70.8	13.9	13.9	27.8	82.9	*	*	17.1	22.3
NORWOOD	241	64.1	15.6	20.3	35.9	75.2	15.9	8.8	24.8	30.7
OLD COLONY VOC TECH REG	137	60.2	13.6	26.1	39.8	49.0	28.6	22.4	51.0	43.8
OLD ROCHESTER (UNION 55)	169	70.1	*	*	28.7	81.7	*	*	14.6	21.9
OXFORD	104	67.9	*	*	32.1	72.5	*	*	25.5	28.8
PALMER	80	60.0	*	*	35.0	77.5	*	*	*	28.8
PATHFINDER VOC TECH REG	160	41.2	17.6	38.2	55.9	53.4	*	*	44.8	51.9
PEABODY	460	54.7	20.2	15.7	35.9	63.7	16.9	13.1	30.0	32.8
PEMBROKE	249	51.7	28.0	16.8	44.8	65.1	22.6	11.3	34.0	40.2

**Table 5. Body Mass Index Screening Results for Children in Grade 10 in Massachusetts School Districts, 2011-2012**

School District	Total number of students screened (N)	Males				Females				Males and Females
		Healthy Weight (%)	Over-weight (%)	Obese (%)	Over-weight or Obese (%)	Healthy Weight (%)	Over-weight (%)	Obese (%)	Over-weight or Obese (%)	Over-weight or Obese (%)
PENTUCKET REGIONAL	163	69.0	11.5	14.9	26.4	84.2	*	*	*	19.6
PILGRIM AREA COLLABORATIVE	13	*	*	*	*	*	*	*	*	*
PIONEER CHARTER SCHOOL OF SCIENCE	49	63.6	*	*	*	51.9	*	*	48.1	42.9
PIONEER VALLEY PERF ARTS CHARTER	68	61.1	*	*	*	72.0	*	*	28.0	30.9
PIONEER VALLEY REGIONAL	81	83.3	*	*	*	61.5	*	*	38.5	23.5
PITTSFIELD	413	61.8	15.0	20.8	35.7	71.4	18.0	10.2	28.2	32.0
PLYMOUTH	593	52.5	21.0	24.1	45.1	71.1	14.8	13.4	28.2	36.6
QUABBIN REGIONAL	147	71.1	*	*	28.9	62.0	*	*	38.0	33.3
QUABOAG REGIONAL	82	70.0	*	*	*	53.8	25.0	21.2	46.2	40.2
QUINCY	619	66.0	15.9	16.2	32.1	71.7	12.5	14.5	27.0	29.6
RALPH C MAHAR REGIONAL	119	70.3	*	*	28.1	58.2	20.0	20.0	40.0	33.6
RANDOLPH	185	57.1	15.3	26.5	41.8	69.0	18.4	12.6	31.0	36.8
READS COLLABORATIVE	*	*	*	*	*	*	*	*	*	*
REVERE	368	51.7	24.4	22.7	47.2	65.1	21.9	11.5	33.3	39.9
ROCKLAND	126	65.6	*	*	32.8	71.0	*	*	29.0	31.0
ROCKPORT	73	54.5	*	*	42.4	72.5	*	*	25.0	32.9
SABIS FOXBORO REG'L CHARTER	63	72.2	*	*	27.8	70.4	*	*	*	28.6
SABIS INTERNATIONAL	107	62.5	*	*	35.4	45.8	30.5	23.7	54.2	45.8
SALEM	253	58.7	13.8	25.4	39.1	59.1	18.3	20.0	38.3	38.7

**Table 5. Body Mass Index Screening Results for Children in Grade 10 in Massachusetts School Districts, 2011-2012**

School District	Total number of students screened (N)	Males				Females				Males and Females
		Healthy Weight (%)	Over-weight (%)	Obese (%)	Over-weight or Obese (%)	Healthy Weight (%)	Over-weight (%)	Obese (%)	Over-weight or Obese (%)	Over-weight or Obese (%)
SALEM ACADEMY CHARTER	41	65.0	*	*	*	71.4	*	*	*	29.3
SANDWICH	162	76.0	*	*	22.7	87.4	*	*	*	16.0
SAUGUS	157	56.1	*	*	41.5	70.7	*	*	29.3	35.7
SEEKONK	176	70.5	*	*	24.2	80.2	*	*	19.8	22.2
SHARON	305	73.8	12.4	11.7	24.1	76.3	15.6	6.9	22.5	23.3
SHAWSHEEN VALLEY VOC TECH REG	334	56.3	23.4	13.5	37.0	60.6	26.1	9.9	35.9	36.5
SHREWSBURY	388	67.8	14.0	15.8	29.8	76.5	15.7	7.8	23.5	26.3
SILVER LAKE (SCHOOL UNION 31)	263	63.1	18.8	14.1	32.9	71.1	18.4	9.6	28.1	30.8
SO MIDDLESEX VOC TECH REG	156	57.6	15.2	26.3	41.4	56.1	*	*	40.4	41.0
SOMERSET BERKLEY REGIONAL	300	45.3	31.8	19.6	51.4	57.9	28.9	13.2	42.1	46.7
SOMERVILLE	311	58.6	15.4	22.8	38.3	57.7	21.5	19.5	40.9	39.5
SOUTH HADLEY	53	60.0	*	*	40.0	42.9	*	*	42.9	41.5
SOUTH SHORE EDUCATIONAL COLLAB.	15	*	*	*	84.6	*	*	*	*	73.3
SOUTH SHORE VOC TECH REG	147	49.4	16.9	30.1	47.0	45.3	25.0	28.1	53.1	49.7
SOUTHBRIDGE	108	64.0	*	*	36.0	63.8	*	*	34.5	35.2
SOUTHEASTERN VOC TECH REG	270	45.9	17.1	34.2	51.4	54.8	16.1	27.4	43.5	47.8
SOUTHERN BERKSHIRE REGIONAL	48	70.8	*	*	*	45.8	*	*	50.0	39.6
SOUTHERN WORCESTER CTY VOC TECH	263	63.2	9.9	23.6	33.5	61.7	18.5	17.3	35.8	34.2
SOUTHWICK-TOLLAND REGIONAL	124	78.6	*	*	19.6	69.1	*	*	26.5	23.4

**Table 5. Body Mass Index Screening Results for Children in Grade 10 in Massachusetts School Districts, 2011-2012**

School District	Total number of students screened (N)	Males				Females				Males and Females
		Healthy Weight (%)	Over-weight (%)	Obese (%)	Over-weight or Obese (%)	Healthy Weight (%)	Over-weight (%)	Obese (%)	Over-weight or Obese (%)	Over-weight or Obese (%)
SPENCER-E BROOKFIELD REGIONAL SPIRIT OF KNOWLEDGE ACADEMY CHARTER	107	70.0	*	*	28.3	87.2	*	*	*	19.6
	32	*	*	*	*	69.6	*	*	*	37.5
SPRINGFIELD	1,149	54.8	18.1	26.4	44.5	54.0	21.6	23.8	45.3	44.9
STONEHAM	167	56.6	19.7	21.1	40.8	80.2	*	*	19.8	29.3
STOUGHTON	243	55.5	19.0	24.1	43.1	62.3	24.5	11.3	35.8	39.9
STURGIS CHARTER	208	72.1	11.6	15.1	26.7	68.0	18.0	12.3	30.3	28.8
SUTTON	85	71.4	*	*	26.5	75.0	*	*	*	24.7
SWAMPSCOTT (INCLUDING NAHANT)	183	56.8	18.5	19.8	38.3	86.3	*	*	13.7	24.6
SWANSEA	143	69.6	*	*	29.1	60.9	*	*	37.5	32.9
TANTASQUA (SCHOOL UNION 61)	276	83.0	7.5	9.5	17.0	93.8	*	*	*	12.0
TAUNTON	229	59.1	16.5	22.8	39.4	58.8	21.6	16.7	38.2	38.9
TEWKSBURY	203	53.7	23.2	20.0	43.2	67.6	15.7	13.9	29.6	36.0
THE EDUCATION COOPERATIVE	*	*	*	*	*	*	*	*	*	*
TRI COUNTY VOC TECH REG	253	57.4	16.9	24.3	41.2	59.0	14.3	26.7	41.0	41.1
WHITMAN-HANSON REGIONAL	322	51.3	21.3	22.0	43.3	62.8	20.9	15.7	36.6	39.8
WHITTIER VOC TECH REG	307	53.8	20.1	22.5	42.6	59.4	21.7	18.8	40.6	41.7
WILLIAMSTOWN-LANESBOROUGH (SCHOOL UNION 71)	117	91.2	*	*	*	86.7	*	*	*	11.1
WILMINGTON	222	63.5	16.7	19.8	36.5	77.0	*	*	20.6	27.5
WINCHENDON	100	64.6	*	*	35.4	61.5	*	*	36.5	36.0

**Table 5. Body Mass Index Screening Results for Children in Grade 10 in Massachusetts School Districts, 2011-2012**

School District	Total number of students screened (N)	Males				Females				Males and Females
		Healthy Weight (%)	Over-weight (%)	Obese (%)	Over-weight or Obese (%)	Healthy Weight (%)	Over-weight (%)	Obese (%)	Over-weight or Obese (%)	Over-weight or Obese (%)
WINCHESTER	249	76.3	*	*	21.1	82.2	8.1	8.9	17.0	18.9
WINTHROP	128	59.1	16.7	22.7	39.4	71.0	*	*	29.0	34.4
WOBURN	334	69.4	13.9	15.6	29.5	66.5	16.8	16.1	32.9	31.1
WORCESTER	1,087	60.3	15.4	22.3	37.7	61.2	16.8	20.0	36.8	37.3

Definitions: *Underweight* – BMI for age percentile < 5<sup>th</sup> percentile; *Healthy weight* – BMI for age percentile between 5<sup>th</sup> and 85<sup>th</sup> percentile; *Overweight* – BMI for age percentile between 85<sup>th</sup> and 95<sup>th</sup> percentile; *Obese* – BMI for age percentile ≥ 95<sup>th</sup> percentile.

Notes: Data that did not pass data quality tests were excluded from the analysis.

\* Data is suppressed due to the small number of individuals in this cell.

# There is an unusual variation between this year's data and the prior year's data.

**Table 6. Underweight Children in Grades 1, 4, 7, 10 in Massachusetts School Districts, 2011-2012**

School District	Total number of students screened (N)	Percent Underweight		
		Males (%)	Females (%)	Males and Females (%)
<b>TOTAL</b>	<b>247,999</b>	<b>2.5</b>	<b>2.4</b>	<b>2.4</b>
ABBY KELLEY FOSTER REG CHARTER	321	*	*	*
ABINGTON	232	*	*	*
ACADEMY OF PACIFIC RIM CHARTER	112	*	*	*
ACTON-BOXBOROUGH REGIONAL	1,564	2.5	1.9	2.2
ACUSHNET	333	*	*	*
ADAMS-CHESHIRE REGIONAL	389	*	*	*
ADVANCED MATH AND SCIENCE ACADEMY CHARTER	278	*	*	*
AMESBURY	706	*	*	2.1
AMHERST-PELHAM (SCHL UNION 26)	791	*	*	2.4
ANDOVER	1,893	2.5	2.6	2.5
ARLINGTON	1,377	1.9	2.6	2.3
ASHBURNHAM-WESTMINSTER REG	661	*	*	2
ASHLAND	756	4.8	4.9	4.9
ASSABET VALLEY VOC TECH REG	250	*	*	*
ATHOL-ROYALSTON REGIONAL	402	*	*	*
ATLANTIS CHARTER	85	*	*	*
ATTLEBORO	1,656	2.1	2.5	2.3
AUBURN	702	*	*	1.7
AVON	219	*	*	*
AYER SHIRLEY REGIONAL	473	*	*	3
BARNSTABLE	1,457	1.4	2.6	2
BEDFORD	723	*	*	2.1
BELCHERTOWN	780	*	*	2.4
BELLINGHAM	716	3	5.7	4.3
BELMONT	1,192	3.3	2.9	3.1
BERKSHIRE ARTS AND TECHNOLOGY CHARTER	81	*	*	*



**Table 6. Underweight Children in Grades 1, 4, 7, 10 in Massachusetts School Districts, 2011-2012**

School District	Total number of students screened (N)	Percent Underweight		
		Males (%)	Females (%)	Males and Females (%)
BERKSHIRE HILLS REGIONAL	395	*	*	*
BERLIN BOYLSTON (SCHL UNION 60)	286	*	*	*
BEVERLY	1,195	2.1	3.5	2.8
BI-COUNTY COLLABORATIVE (BICO)	56	*	*	*
BILLERICA	1,794	2.1	2.7	2.4
BLACKSTONE VALLEY VOC TECH REG	254	*	*	*
BLACKSTONE-MILLVILLE REGIONAL	568	*	*	*
BLUE HILLS VOC TECH REG	209	*	*	*
BOSTON	12,511	2.5	2.3	2.4
BOSTON RENAISSANCE CHARTER	288	*	*	4.5
BOURNE	632	*	*	2.2
BRAINTREE	1,683	2.2	2.1	2.1
BRIDGEWATER-RAYNHAM REGIONAL	1,699	3.3	2.4	2.9
BRISTOL COUNTY AGR	109	*	*	*
BRISTOL-PLYMOUTH VOC TECH REG	311	*	*	*
BROCKTON	4,389	1.9	1.9	1.9
BROOKLINE	2,115	2.5	3.2	2.9
BURLINGTON	964	4.3	4.4	4.4
CAMBRIDGE	1,530	1.6	2.2	1.9
CANTON	923	*	*	2.2
CAPE COD LIGHTHOUSE CHARTER	76	*	*	*
CAPE COD REGION VOC TECH REG	171	*	*	*
CAPS EDUCATIONAL COLLAB.	22	*	*	*
CARVER	508	*	*	*
CENTRAL BERKSHIRE REGIONAL	485	*	*	*
CHATHAM	187	*	*	*
CHELMSFORD	1,546	3.4	2.3	2.8
CHICOPEE	2,249	*	*	1
CHRISTA MCAULIFFE REG CHARTER	97	*	*	*
CITY ON A HILL CHARTER	46	*	*	*

**Table 6. Underweight Children in Grades 1, 4, 7, 10 in Massachusetts School Districts, 2011-2012**

School District	Total number of students screened (N)	Percent Underweight		
		Males (%)	Females (%)	Males and Females (%)
CLINTON	462	*	*	*
CODMAN ACADEMY CHARTER	41	*	*	*
COHASSET	467	*	*	*
COMMUNITY CHARTER SCHOOL OF CAMBRIDGE	109	*	*	*
CONCORD-CARLISLE REGIONAL	1,152	2.4	2.2	2.3
CONSERVATORY LAB CHARTER	50	*	*	*
DANVERS	1,105	*	*	2.3
DARTMOUTH	1,209	2.3	2.5	2.4
DEDHAM	882	*	*	2.4
DENNIS-YARMOUTH REGIONAL	787	*	*	1.3
DIGHTON-REHOBOTH REGIONAL	907	*	*	2
DOUGLAS	491	*	*	3.5
DOVER-SHERBORN (SCHL UNION 50)	674	*	*	2.5
DRACUT	1,186	*	*	1.1
DUDLEY-CHARLTON REGIONAL	1,283	1.6	1.5	1.6
DUXBURY	946	2.9	2.5	2.7
EAST BRIDGEWATER	595	*	*	3
EAST LONGMEADOW	859	*	*	*
EASTHAMPTON	441	*	*	*
EASTON	1,145	1.9	1.8	1.8
EDWARD BROOKE CHARTER (ALL CAMPUSES)	213	*	*	*
ERVING (SCHOOL UNION 28)	123	*	*	*
ESSEX AGR TECH	105	*	*	*
EXCEL ACADEMY CHARTER	53	*	*	*
FAIRHAVEN	560	3.5	4.3	3.9
FALL RIVER	2,904	1.9	2.1	2
FALMOUTH	760	*	*	2.2
FARMINGTON RIVER REGIONAL	38	*	*	*
FITCHBURG	1,427	*	*	1.3
FOUR RIVERS CHARTER	64	*	*	*

**Table 6. Underweight Children in Grades 1, 4, 7, 10 in Massachusetts School Districts, 2011-2012**

School District	Total number of students screened (N)	Percent Underweight		
		Males (%)	Females (%)	Males and Females (%)
FOXBOROUGH	756	*	*	2.2
FRAMINGHAM	2,032	2.6	2.2	2.4
FRANCIS W PARKER CHARTER	136	*	*	*
FRANKLIN COUNTY VOC TECH REG	123	*	*	*
FREETOWN-LAKEVILLE REGIONAL	827	*	*	*
FRONTIER (SCHOOL UNION 38)	444	*	*	2.9
GARDNER	635	*	*	3.1
GATEWAY REGIONAL	305	*	*	*
GEORGETOWN	485	*	*	*
GLOUCESTER	897	*	*	2.1
GLOUCESTER COMMUNITY ARTS CHARTER	39	*	*	*
GRAFTON	877	3.7	2.9	3.3
GRANBY	316	*	*	*
GREATER LAWRENCE VOC TECH REG	326	*	*	*
GREATER LOWELL VOC TECH REG	491	*	*	*
GROTON-DUNSTABLE REGIONAL	765	*	*	2
HADLEY	175	*	*	*
HAMILTON-WENHAM REGIONAL	588	*	*	3.6
HAMPDEN CHARTER SCHOOL OF SCIENCE	77	*	*	*
HAMPDEN-WILBRAHAM REGIONAL	992	2.2	2.5	2.3
HAMPSHIRE (SCHOOL UNION 66)	523	*	*	1.9
HARWICH	369	*	*	*
HATFIELD	132	*	*	*
HAVERHILL	2,267	2.3	2	2.2
HILL VIEW MONTESSORI CHARTER	91	*	*	*
HILLTOWN CHARTER	53	*	*	*
HINGHAM	1,231	2.3	1.9	2.1
HOLBROOK	360	*	*	*
HOLLISTON	877	*	*	2.1
HOLYOKE	1,423	2.8	2.1	2.5

**Table 6. Underweight Children in Grades 1, 4, 7, 10 in Massachusetts School Districts, 2011-2012**

School District	Total number of students screened (N)	Percent Underweight		
		Males (%)	Females (%)	Males and Females (%)
HOPEDALE	334	*	*	*
HOPKINTON	1,015	*	*	1.9
HUDSON	796	*	*	2.3
HULL #	327	*	*	*
INNOVATION ACADEMY CHARTER	156	*	*	*
IPSWICH	452	*	*	3.3
KING PHILIP REGIONAL	1,247	*	*	1
KIPP ACADEMY LYNN CHARTER	84	*	*	*
LAWRENCE	3,688	1.7	2.2	2
LAWRENCE FAMILY DEV CHARTER	169	*	*	*
LEE-TYRINGHAM (SCHOOL UNION 29)	252	*	*	*
LEICESTER	477	*	*	2.1
LENOX	247	*	*	*
LEOMINSTER	1,780	2.3	2.9	2.6
LEXINGTON	1,910	3.6	3	3.3
LINCOLN-SUDBURY REGIONAL	1,758	1.7	1.2	1.4
LITTLETON	503	*	*	*
LONGMEADOW	664	*	*	1.5
LOWELL	3,292	2.6	2.7	2.6
LOWELL COMMUNITY CHARTER	178	*	*	*
LUDLOW	896	*	*	1.8
LUNENBURG	429	*	*	3.5
LYNN	3,869	3.1	3.2	3.2
LYNNFIELD	650	*	*	1.5
MALDEN	1,749	3.9	2.1	3
MANCHESTER ESSEX REGIONAL	455	*	*	3.1
MANSFIELD	1,377	3.1	2.7	2.9
MARBLEHEAD	998	*	*	2.1
MARLBOROUGH	1,256	3.4	2.6	3
MARSHFIELD	1,355	3.3	2.6	3

**Table 6. Underweight Children in Grades 1, 4, 7, 10 in Massachusetts School Districts, 2011-2012**

School District	Total number of students screened (N)	Percent Underweight		
		Males (%)	Females (%)	Males and Females (%)
MARTHAS VINEYARD (UNION 19)	605	*	*	2.1
MARTHA'S VINEYARD CHARTER	51	*	*	*
MASCONOMET (AND TRI-TOWN SCHOOL UNION)	1,272	3.2	2.8	3
MASHPEE	488	*	*	2
MAYNARD	392	*	*	*
MEDFIELD	863	2.7	2.9	2.8
MEDFORD	1,397	3	3	3
MEDIA & TECH CHARTER	56	*	*	*
MEDWAY	766	*	*	2.1
MELROSE	701	*	*	3.1
MENDON-UPTON REGIONAL	669	*	*	3
METHUEN	1,936	6.2	5	5.6
MIDDLEBOROUGH	977	*	*	1.8
MILFORD	1,173	3.8	1.9	2.8
MILLBURY	547	*	*	1.8
MILLIS	439	*	*	*
MILTON	1,057	2.4	4.9	3.6
MINUTEMAN VOC TECH REG	179	*	*	*
MOHAWK TRAIL REGIONAL	301	*	*	*
MONSON	359	*	*	*
MONTACHUSETT VOC TECH REG	357	*	*	*
NANTUCKET	394	*	*	*
NARRAGANSETT REGIONAL	409	*	*	*
NASHOBA REGIONAL	980	*	*	1.6
NASHOBA VALLEY VOC TECH REG	125	*	*	*
NATICK	1,445	3.6	2	2.8
NAUSET (SCHOOL UNION 54)	801	*	*	2
NEEDHAM	1,643	4.3	3.5	3.9
NEW BEDFORD	3,377	2.9	1.8	2.4
NEWBURYPORT	666	3	3.3	3.2

**Table 6. Underweight Children in Grades 1, 4, 7, 10 in Massachusetts School Districts, 2011-2012**

School District	Total number of students screened (N)	Percent Underweight		
		Males (%)	Females (%)	Males and Females (%)
NEWTON	3,465	3.4	2.8	3.1
NORFOLK COUNTY AGR	120	*	*	*
NORTH ADAMS	87	*	*	*
NORTH ANDOVER	1,386	*	*	1.4
NORTH ATTLEBOROUGH	1,335	2.4	1.5	1.9
NORTH CENTRAL CHARTER ESSENTIAL	87	*	*	*
NORTH MIDDLESEX REGIONAL	1,067	2.1	2.8	2.4
NORTH READING	769	*	*	1.6
NORTH SHORE VOC TECH REG	114	*	*	*
NORTHAMPTON	750	*	*	2.7
NORTHAMPTON-SMITH VOC	111	*	*	*
NORTHBORO-SOUTHBORO (UNION 3)	1,441	2.3	6.6	4.4
NORTHBRIDGE	756	*	*	1.3
NORTHEAST METRO VOC TECH REG	317	*	*	*
NORTHERN BERKSHIRE (UNION 43)	95	*	*	*
NORTHERN BERKSHIRE VOC TECH REG	124	*	*	*
NORTON	815	*	*	2.8
NORWELL	702	*	*	1.7
NORWOOD	1,039	*	*	1.1
OLD COLONY VOC TECH REG	137	*	*	*
OLD ROCHESTER (UNION 55)	793	*	*	2.1
OXFORD	525	*	*	2.7
PALMER	451	*	*	*
PATHFINDER VOC TECH REG	160	*	*	*
PEABODY	1,824	4.6	4.3	4.4
PEMBROKE	1,058	2.4	5.9	4.1
PENTUCKET REGIONAL	881	3.2	3.9	3.5
PIONEER CHARTER SCHOOL OF SCIENCE	94	*	*	*
PIONEER VALLEY CHINESE IMMERSION CHARTER	70	*	*	*
PIONEER VALLEY PERF ARTS CHARTER	133	*	*	*

**Table 6. Underweight Children in Grades 1, 4, 7, 10 in Massachusetts School Districts, 2011-2012**

School District	Total number of students screened (N)	Percent Underweight		
		Males (%)	Females (%)	Males and Females (%)
PIONEER VALLEY REGIONAL	325	*	*	3.1
PITTSFIELD	1,734	4.9	2.4	3.7
PLYMOUTH	2,409	2.2	1.8	2
QUABBIN REGIONAL	711	*	*	1.8
QUABOAG REGIONAL	386	*	*	*
QUINCY	2,581	3.2	3.6	3.4
RALPH C MAHAR REGIONAL	435	*	*	*
RANDOLPH	902	*	*	1.6
REVERE	1,942	1.6	2.4	2
RICHMOND	57	*	*	*
RISING TIDE CHARTER	72	*	*	*
RIVER VALLEY CHARTER	100	*	*	*
ROCKLAND	639	*	*	2.3
ROCKPORT	290	*	*	4.5
SABIS FOXBORO REG'L CHARTER	388	*	*	4.6
SABIS INTERNATIONAL	440	*	*	*
SALEM	1,183	2	2	2
SALEM ACADEMY CHARTER	96	*	*	*
SANDWICH	971	*	*	2
SAUGUS	848	2.4	3.7	3.1
SCITUATE	739	2.7	2.7	2.7
SEEKONK	668	*	*	2.8
SHARON	987	*	*	2.2
SHAWSHEEN VALLEY VOC TECH REG	334	*	*	5.4
SHREWSBURY	1,771	3.2	2	2.6
SILVER LAKE (SCHOOL UNION 31)	911	*	*	3.3
SO MIDDLESEX VOC TECH REG	156	*	*	*
SOMERSET BERKLEY REGIONAL	1,145	*	*	2
SOMERVILLE	1,497	2.7	1.9	2.3
SOUTH HADLEY	491	*	*	3.3

**Table 6. Underweight Children in Grades 1, 4, 7, 10 in Massachusetts School Districts, 2011-2012**

School District	Total number of students screened (N)	Percent Underweight		
		Males (%)	Females (%)	Males and Females (%)
SOUTH SHORE CHARTER	130	*	*	*
SOUTH SHORE VOC TECH REG	147	*	*	*
SOUTHBRIDGE	666	*	*	*
SOUTHEASTERN VOC TECH REG	270	*	*	*
SOUTHERN BERKSHIRE REGIONAL	235	*	*	*
SOUTHERN WORCESTER CTY VOC TECH	263	*	*	*
SOUTHWICK-TOLLAND REGIONAL	490	*	*	2.7
SPENCER-E BROOKFIELD REGIONAL	576	*	*	3
SPIRIT OF KNOWLEDGE ACADEMY CHARTER	78	*	*	*
SPRINGFIELD	6,463	2.5	1.9	2.2
STONEHAM	738	*	*	2.4
STOUGHTON	1,056	*	*	1.9
STURGIS CHARTER	208	*	*	*
SUTTON	424	*	*	*
SWAMPSCOTT (INCLUDING NAHANT)	709	*	*	4.1
SWANSEA	604	*	*	2
TANTASQUA (SCHOOL UNION 61)	1,110	1.8	1.8	1.8
TAUNTON	2,204	2	1.8	1.9
TEWKSBURY	1,168	2	2.9	2.5
TRI COUNTY VOC TECH REG	253	*	*	*
TRITON REGIONAL	902	*	*	2.1
TYNGSBOROUGH	568	*	*	3
UXBRIDGE	574	*	*	2.6
WAKEFIELD	875	4.7	3.3	4
WALPOLE	1,210	2	2.4	2.2
WALTHAM	1,403	*	*	1.1
WARE	381	*	*	*
WAREHAM	832	*	*	*
WATERTOWN	782	*	*	1.8
WAYLAND	762	3.3	4.9	4.1



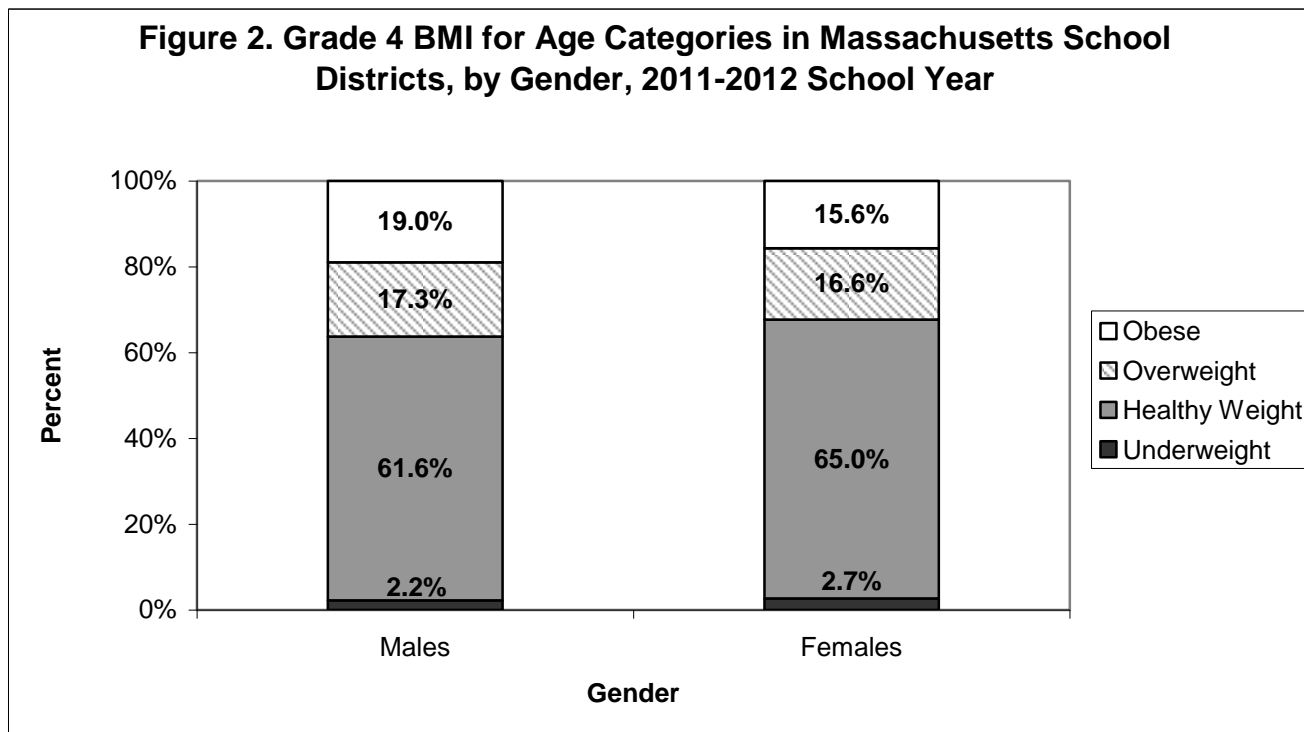
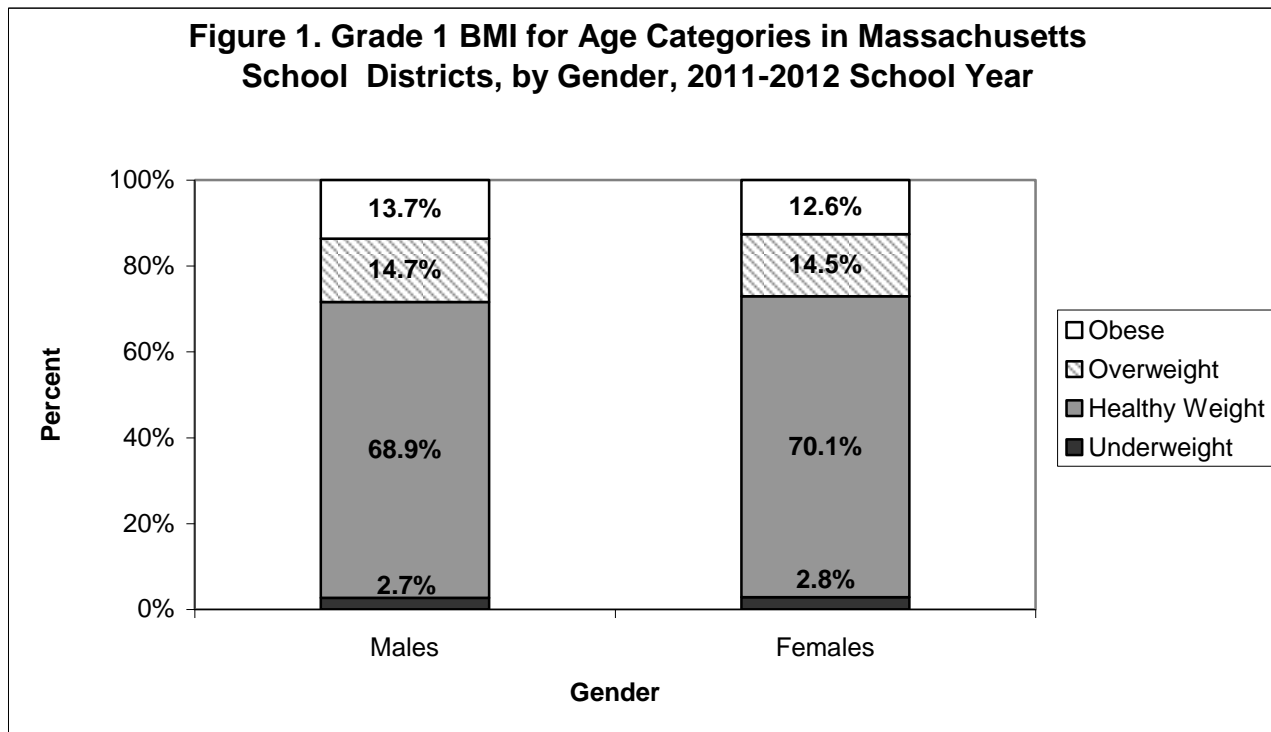
**Table 6. Underweight Children in Grades 1, 4, 7, 10 in Massachusetts School Districts, 2011-2012**

School District	Total number of students screened (N)	Percent Underweight		
		Males (%)	Females (%)	Males and Females (%)
WEBSTER	128	*	*	*
WELLESLEY	1,497	2	3.1	2.5
WEST BRIDGEWATER	388	*	*	2.6
WEST SPRINGFIELD	1,113	*	*	1.8
WESTBOROUGH	1,005	4.2	4.6	4.4
WESTFIELD	1,583	1.6	1.5	1.6
WESTFORD	1,604	2.5	2.8	2.6
WESTON	716	*	*	2.5
WESTPORT	518	*	*	2.1
WESTWOOD	926	3.1	2.1	2.6
WEYMOUTH	1,995	2.8	2.8	2.8
WHITMAN-HANSON REGIONAL	1,270	*	*	2.2
WHITTIER VOC TECH REG	307	*	*	*
WILLIAMSTOWN-LANESBOROUGH (SCHOOL UNION 71)	339	*	*	*
WILMINGTON	1,034	*	*	1.6
WINCHENDON	443	*	*	*
WINCHESTER	1,289	*	*	1.3
WINTHROP	544	3.8	3.6	3.7
WOBURN	1,397	*	*	0.8
WORCESTER	6,066	5.2	4.2	4.7

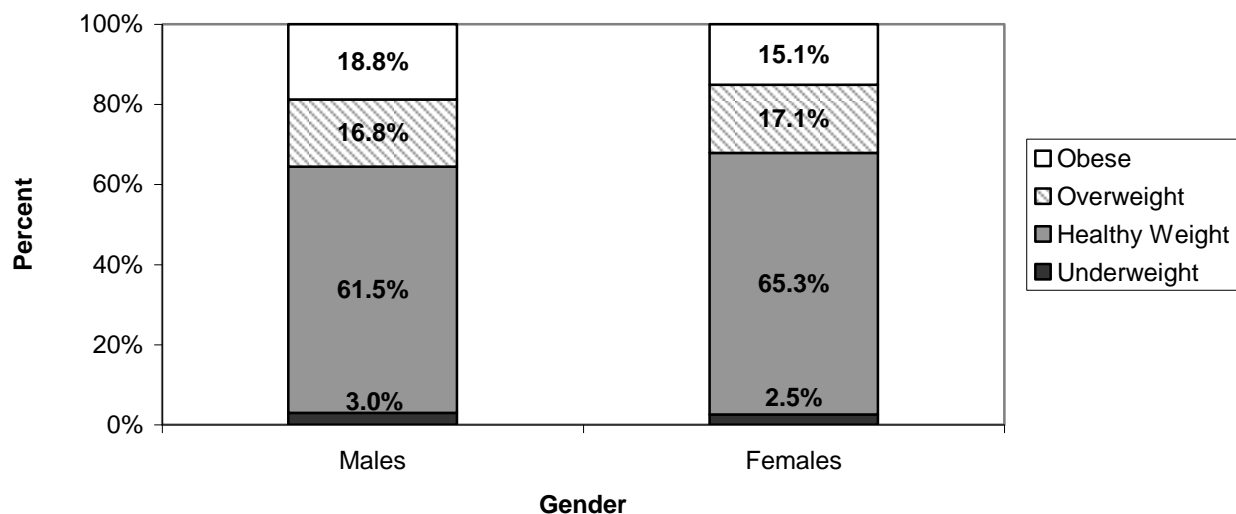
Definitions: *Underweight* – BMI for age percentile < 5<sup>th</sup> percentile. *Healthy weight* – BMI for age percentile between 5<sup>th</sup> and 85<sup>th</sup> percentile. *Overweight* – BMI for age percentile between 85<sup>th</sup> and 95<sup>th</sup> percentile. *Obese* – BMI for age percentile ≥ 95<sup>th</sup> percentile.

\* Data is suppressed due to the small number of individuals in this cell.

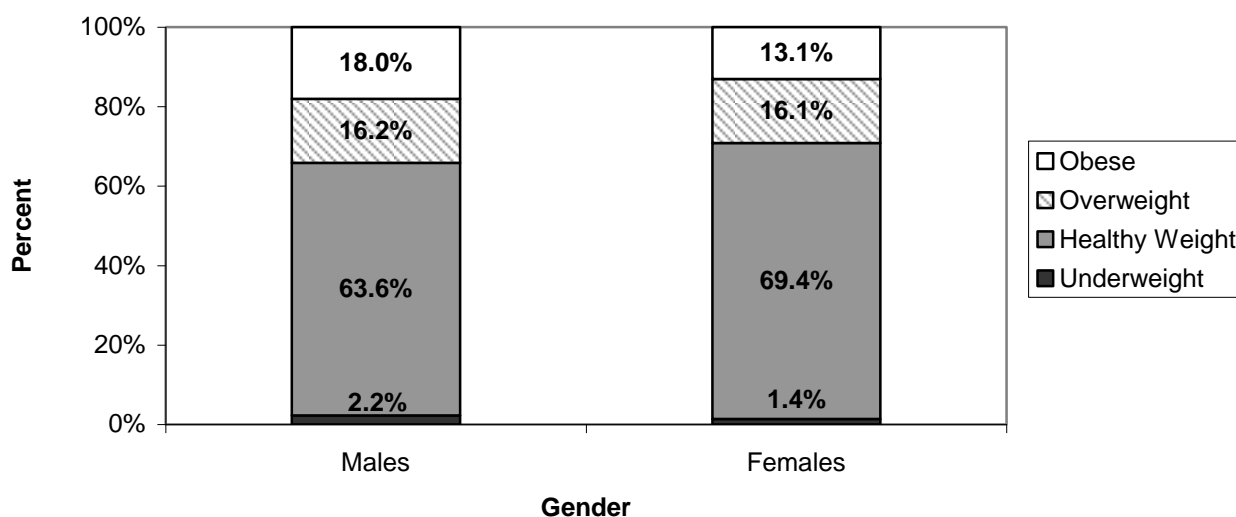
**Figures 1 – 4. Body Mass Index (BMI) and Weight Categories for Grades 1, 4, 7, 10 by Gender for Massachusetts School Districts, 2011-2012**



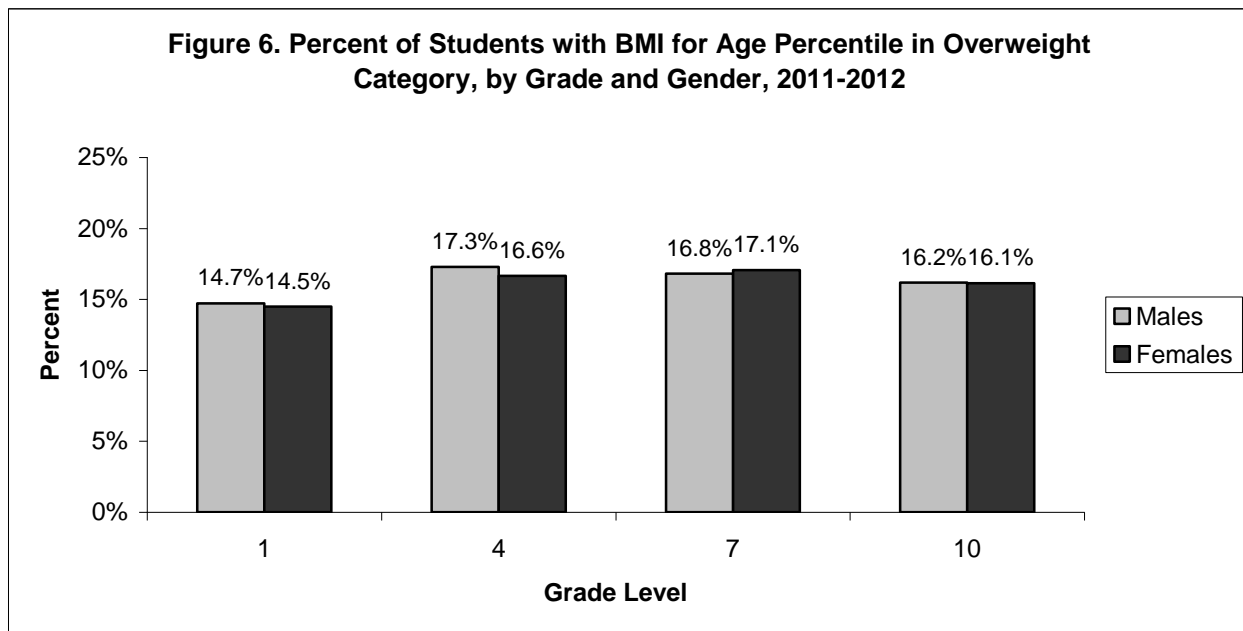
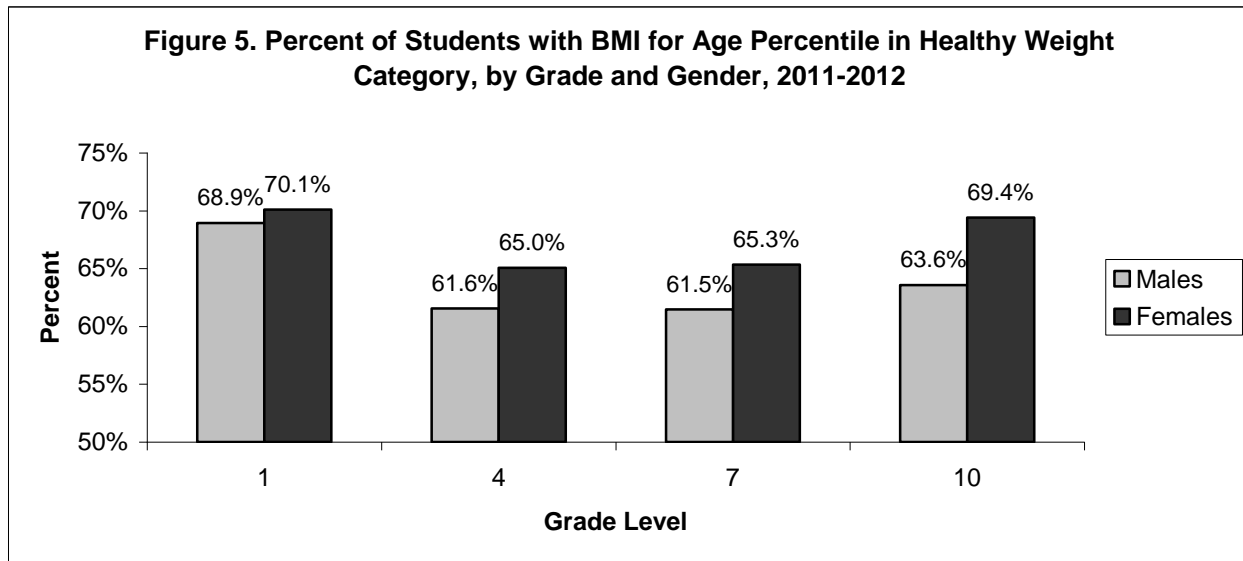
**Figure 3. Grade 7 BMI for Age Categories in Massachusetts School Districts, by Gender, 2011-2012 School Year**



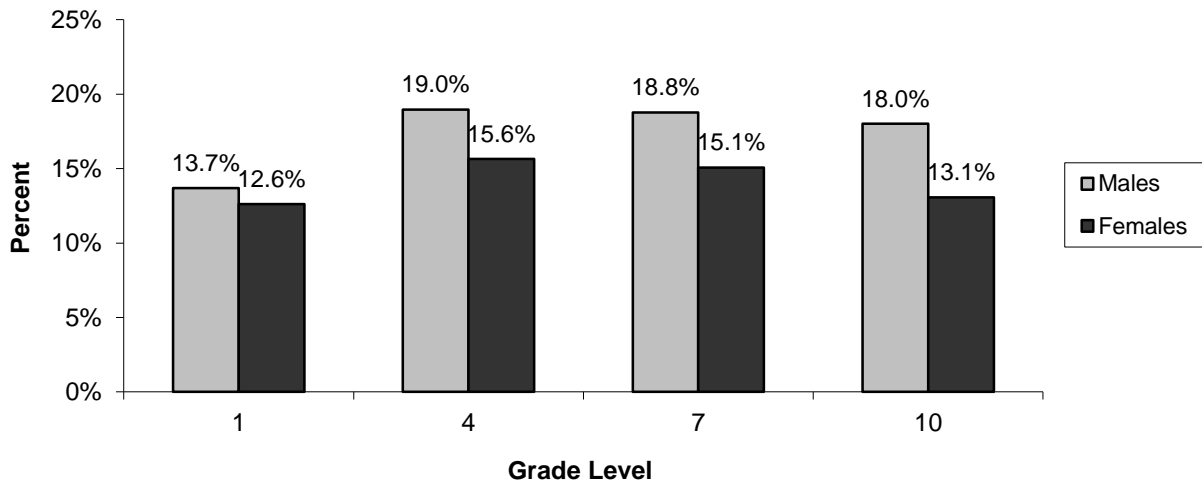
**Figure 4. Grade 10 BMI for Age Categories in Massachusetts School Districts, by Gender, 2011-2012 School Year**



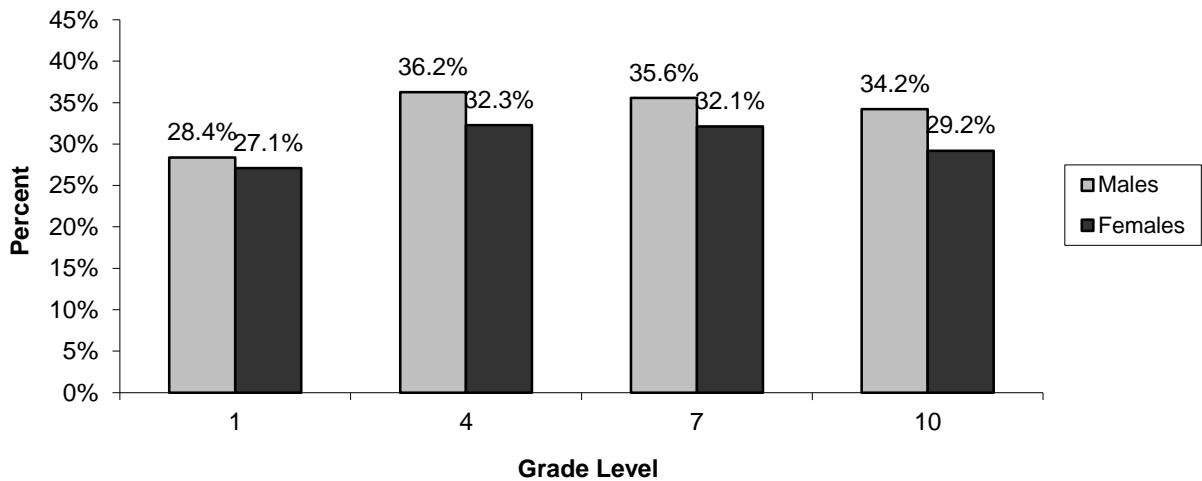
**Figures 5 – 9. Healthy Weight, Overweight, Obese and Underweight Students in Grades 1, 4, 7, 10 by Gender in Massachusetts School Districts, 2011-2012**



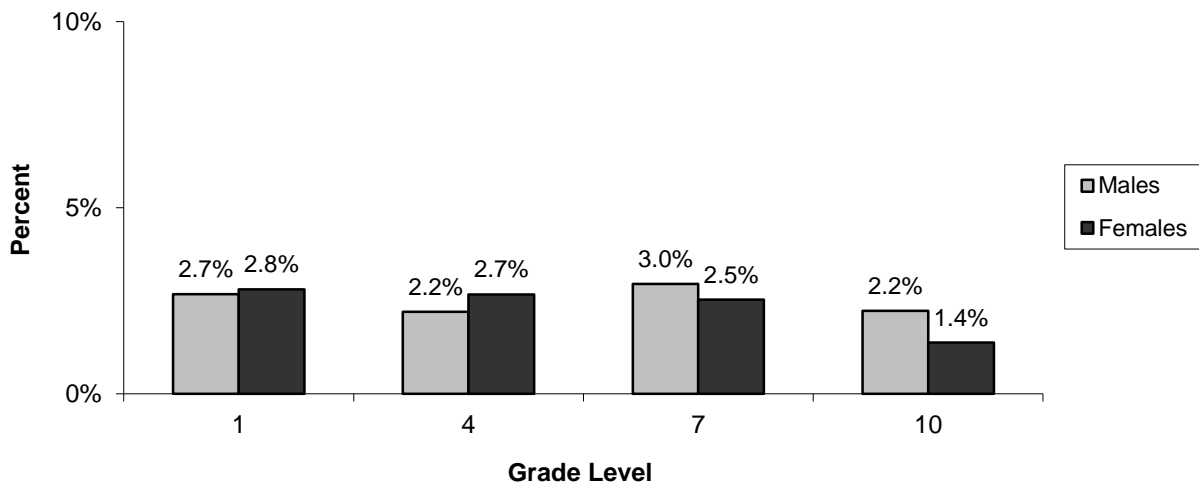
**Figure 7. Percent of Students with BMI for Age Percentile in Obese Category by, Grade and Gender, 2011-2012**



**Figure 8. Percent of Students with BMI for Age Percentile in Overweight or Obese Category, by Grade and Gender, 2011-2012**



**Figure 9. Percent of Students with BMI for Age Percentile in Underweight Category, by Grade and Gender, 2011-2012**



**Figure 10. Childhood Obesity and Median Household Income, 2011-2012**

