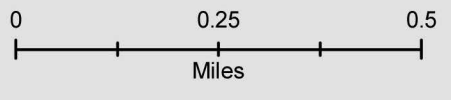
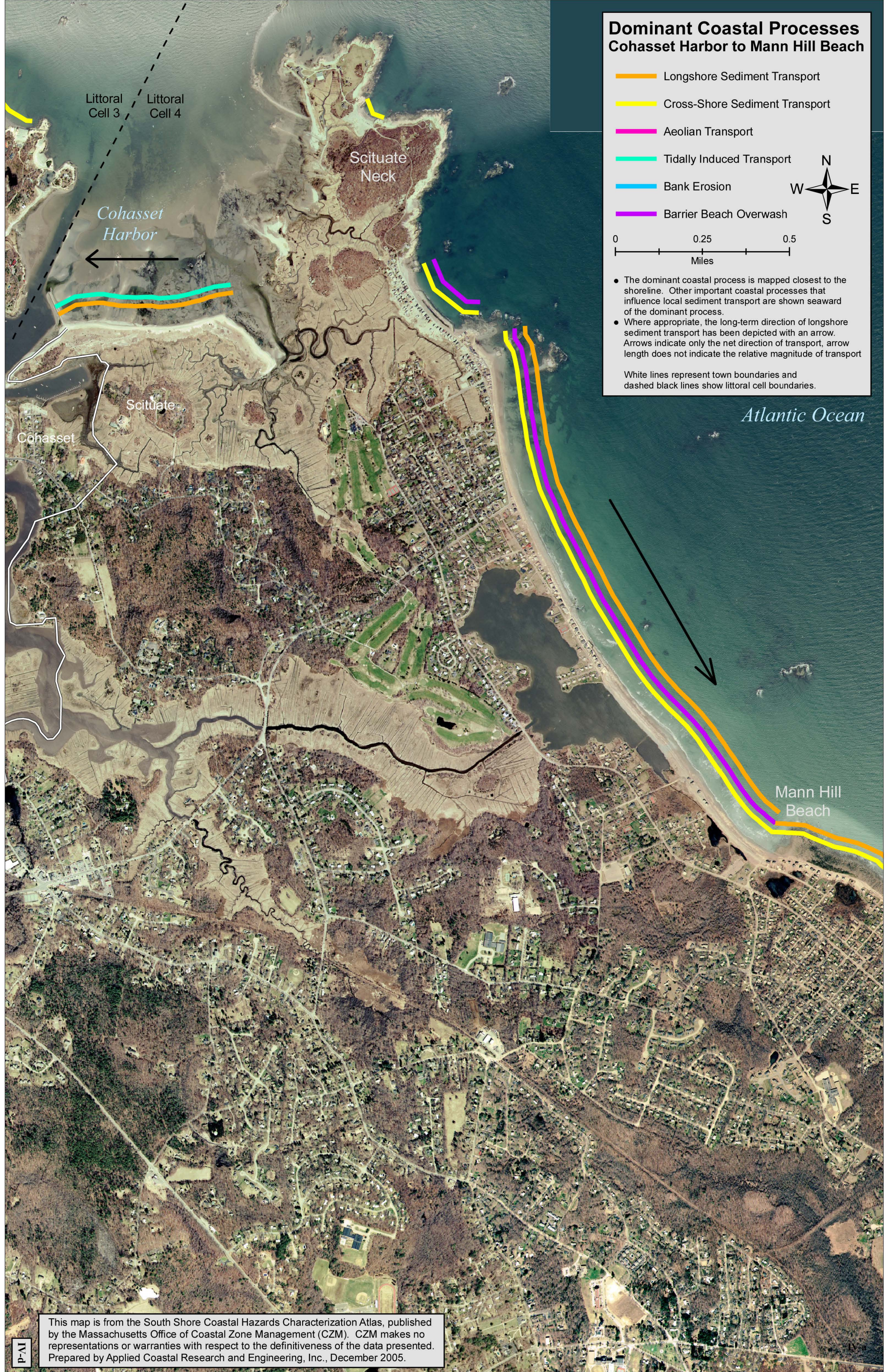


# Dominant Coastal Processes Cohasset Harbor to Mann Hill Beach

-  Longshore Sediment Transport
-  Cross-Shore Sediment Transport
-  Aeolian Transport
-  Tidally Induced Transport
-  Bank Erosion
-  Barrier Beach Overwash



- The dominant coastal process is mapped closest to the shoreline. Other important coastal processes that influence local sediment transport are shown seaward of the dominant process.
  - Where appropriate, the long-term direction of longshore sediment transport has been depicted with an arrow. Arrows indicate only the net direction of transport, arrow length does not indicate the relative magnitude of transport.
- White lines represent town boundaries and dashed black lines show littoral cell boundaries.



This map is from the South Shore Coastal Hazards Characterization Atlas, published by the Massachusetts Office of Coastal Zone Management (CZM). CZM makes no representations or warranties with respect to the definitiveness of the data presented. Prepared by Applied Coastal Research and Engineering, Inc., December 2005.