



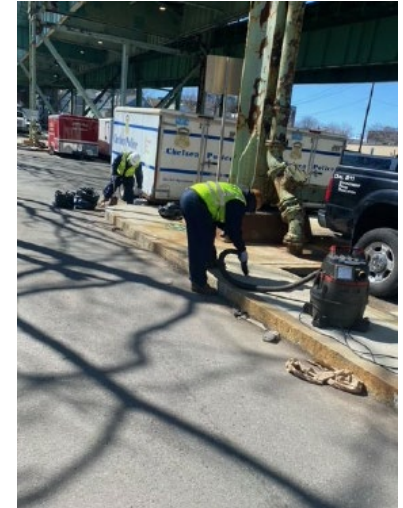
**MassDOT Highway Construction Contract: 122602
Structural Cleaning & Painting, Steel & Concrete Repairs
on Tobin Bridge, B-16-017=C-09-006**

Board of Directors Meeting

September 20, 2023

Current Clean Up and Interim Measures

- MassDOT has been working in the area for the past several months and vacuuming up paint chips that have fallen from the bridge. The paint chips are then being disposed of offsite in accordance with environmental regulations.
- MassDOT is continuing to coordinate with city officials and provide them weekly updates on progress of removal.
- Regular weekly inspections and removal is ongoing and will continue until the larger bridge painting project.
- An interim netting system has been installed in parallel with ongoing cleanup activities.
- The installation of the interim netting system began in July and MassDOT will coordinate with the City of Chelsea on any local impacts.
- Community hotline established (English & Spanish) for questions/concerns: 857-492-0221





**Project
Purpose**

Purpose and Need

The primary purpose of the project is to preserve the existing Chelsea approach of the Tobin Bridge to maintain the structure in “State of Good Repair”.

Address typical maintenance activities.

Target elements that are most in need of repair.



Purpose and Need (Continued)

- The current paint system is failing, and paint chips are falling on the ground below the structure.



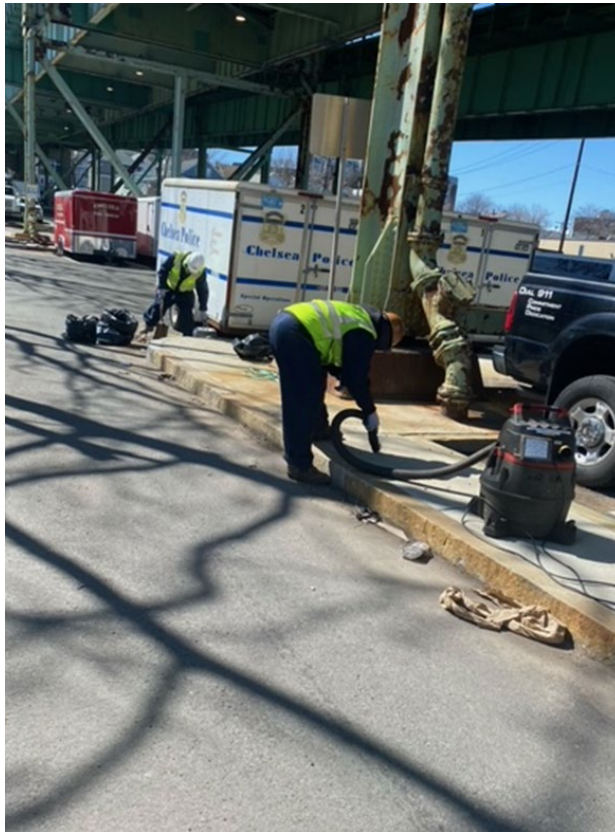
Lower Level Paint Condition



Close up of peeling paint

Purpose and Need (Continued)

- Due to community concerns MassDOT has been vacuuming up paint chips that have fallen from the bridge.



Purpose and Need (Continued)

- In addition to the paint chip clean up MassDOT has placed temporary netting to catch some of the paint chips.





Construction Scope

Construction Scope

- Clean existing steel and remove old paint on Chelsea Approach lower level mainline (northbound), Beacon Street Ramp, upper level mainline (southbound) and Everett Ave Ramp.
- Perform repairs to existing Chelsea Approach steel superstructure elements, and safety walk elements at lower level mainline, Beacon Street Ramp, upper level mainline and Everett Ave Ramp.
- Upon completion of steel repairs, paint the existing steel.
- Perform repairs to substructure elements.
- Disincentive clause in the contract encouraging the contractor to submit plans and install temporary protective shielding, work platforms and containment within approximately 120 days of Notice to Proceed.
- Paint chip cleanup work will be transferred to the new contract within 7 days of Notice to Proceed.

Construction Scope (Continued)

- Selected Structural Steel Repairs.
- Repairs to Concrete Substructure Elements.



Heavy Corrosion in Lower Web and
Flanges - Steel Cross Girder



Spalling of Concrete at Pier Column with
Exposed, Corroding Reinforcing

Construction Duration & User Impacts

- Construction operations will be conducted in ways that minimize impacts to the traveling public.
- No permanent lane closures on the bridge during construction.
- No impacts to adjacent roadways.
- Coordination will take place with nearby construction projects.
- Construction Duration is estimated to be approximately 48 months.



Typical Condition of the Safetywalk



Disconnected Top Rail



**Public
Process**

Public Outreach and Engagement

- Public meeting prior to the commencement of construction activities
- Comprehensive public outreach will take place throughout the project
- Project website will be established
- Regular construction updates

Communication Methods

- Broadcast and print media
- Project webpage
- Mobile media
- MassDOT and Commonwealth websites
- Social media
- GovDelivery
- Fliers, fact sheets, newsletters, e-mail, presentations, briefings, meetings, and signs

Public Involvement

- General public
- Local municipalities
- Neighborhood groups
- Adjacent business owners
- Elected officials

Public Outreach and Engagement

- June 3, 2021 (Task Force Meeting)
 - October 20, 2021 (Task Force Meeting)
 - June 14, 2022 (Task Force Meeting)
 - June 28, 2023 (Public Information Meeting)
-
- Primary Concerns Expressed include:
-
- Construction Mitigation efforts related to Air Quality, Noise Control, Lead Paint Containment Safeguards, and Communications



Procurement

Construction Procurement

- Project was advertised on June 24, 2023
- Engineers Estimate was \$122,568,952.00
- Bid Opening was on August 29, 2023
- Five (5) Bids were received:

Liberty SPS JV	\$109,145,207.00
The Middlesex Corporation	\$123,205,675.50
Allied Painting Inc.	\$131,778,525.00
Barletta Heavy Division	\$141,191,000.00
J F White Contracting Co.	\$144,999,000.00
- The difference between the low bid and the Engineer's Estimate may be due to SPS currently working on site on similar construction and Liberty having painted the structure on the last two painting contracts. Their familiarity of the site conditions and work to be performed may have allowed them to bid aggressively on the project.

Overall Project Budget

Line Item	Budget
Bid Amount	\$109,145,207.00
Contingencies (10%)	\$10,914,520.70
5% Construction Engineering	\$5,457,260.34
Traffic Police	\$2,400,000.00
Total	\$127,916,988.04

The total cost for this construction contract is funded with 100% MHS Tobin Bridge Tolls.

Request of the MassDOT Board

Staff request that the MassDOT Board authorize the Secretary of the Massachusetts Department of Transportation, or their designee, to award and execute MassDOT Construction Contract 122602 Structural Cleaning & Painting, Steel & Concrete Repairs on Tobin Bridge, B-16-017=C-09-006 with Liberty SPS JV in the amount of \$109,145,207.00.