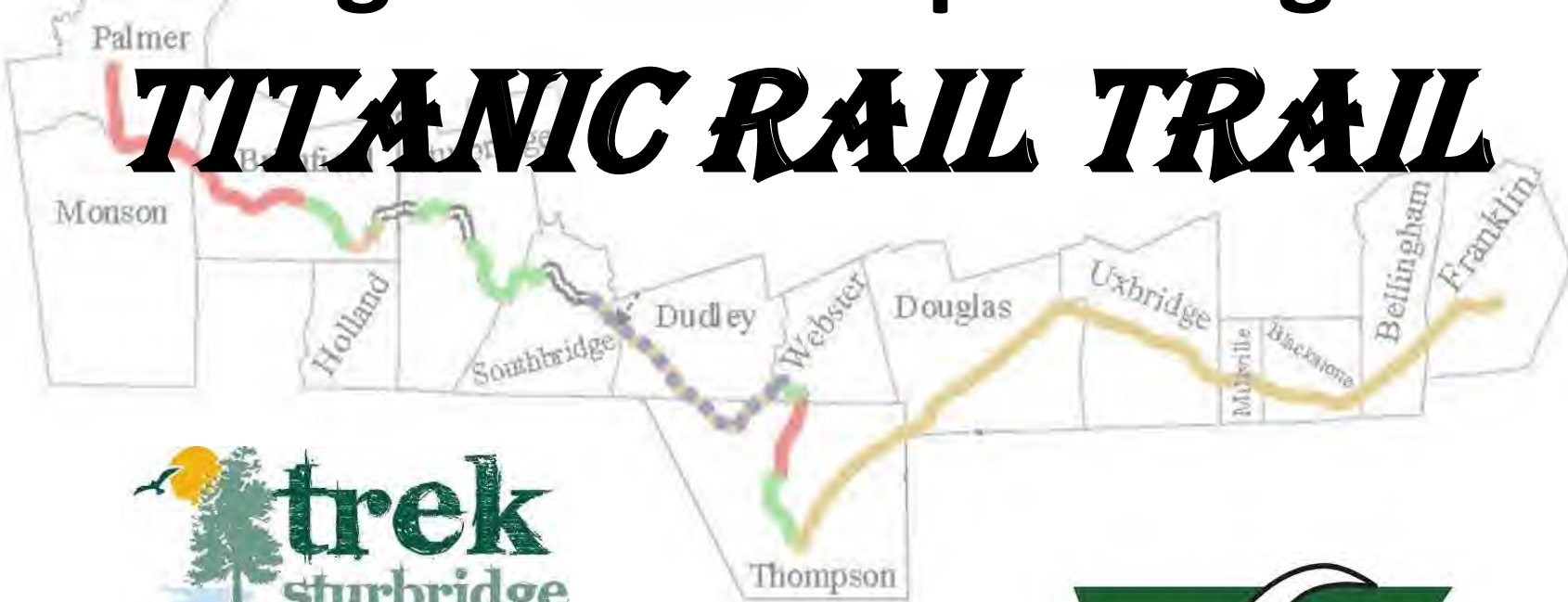


From Spaghetti to Trail:

Building Partnerships along the

TITANIC RAIL TRAIL



Thomas A. Chamberland
Sturbridge Trail Committee
Friends of the Titanic Rail Trail

November 14, 2015



From Spaghetti to Trail:

Building Partnerships along the

TITANIC RAIL TRAIL

- *Assembling the Ingredients:*

Who & What we put together

- *Letting it Simmer :*

How we put it together

- *When Do We Eat!*

Celebrating the successes



Assembling the Ingredients:

The Spaghetti:

- **6 different trails:**
 - **Grand Trunk Trail, MA**
 - **Quinebaug Rail Trail, MA**
 - **Thompson Trail, CT**
 - **Southern New England Trail, MA & CT**
 - **Airline Trail, CT**
 - **French River Greenway, MA**
- 

Assembling the Ingredients:

Where's the Beef:

- **6 State Agencies;**

- Department of Conservation and Recreation, MA
- Massachusetts Department of Transportation
- Department of Conservation, CT
- Central Massachusetts Regional Planning Agency
- Pioneer Valley Regional Planning agency
- Metropolitan Area Planning Agency

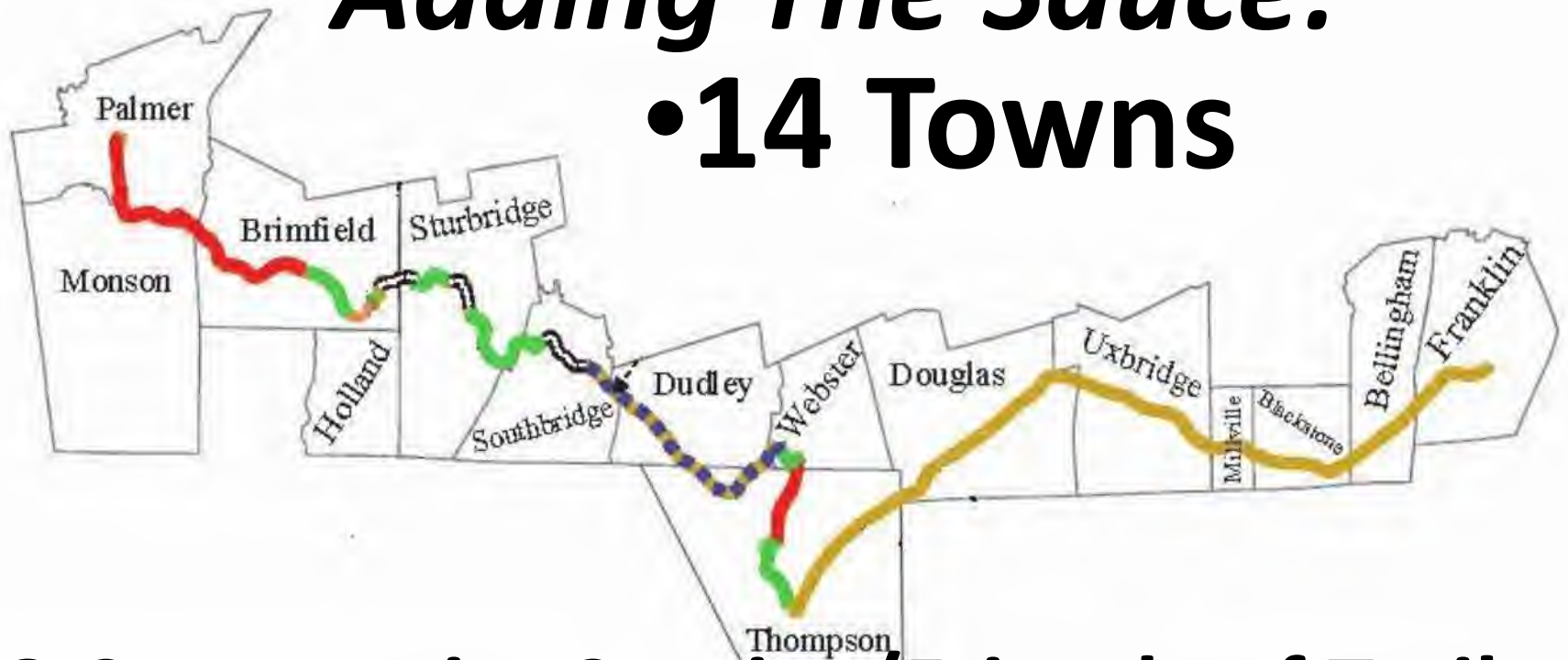
- **3 Federal Partners;**

- U. S. Army Corps of Engineers (7 F. D. R. projects)
- National Park Service (& 2 heritage corridors)
- Federal Highway Administration (the \$)

Assembling the Ingredients:

Adding The Sauce:

• 14 Towns

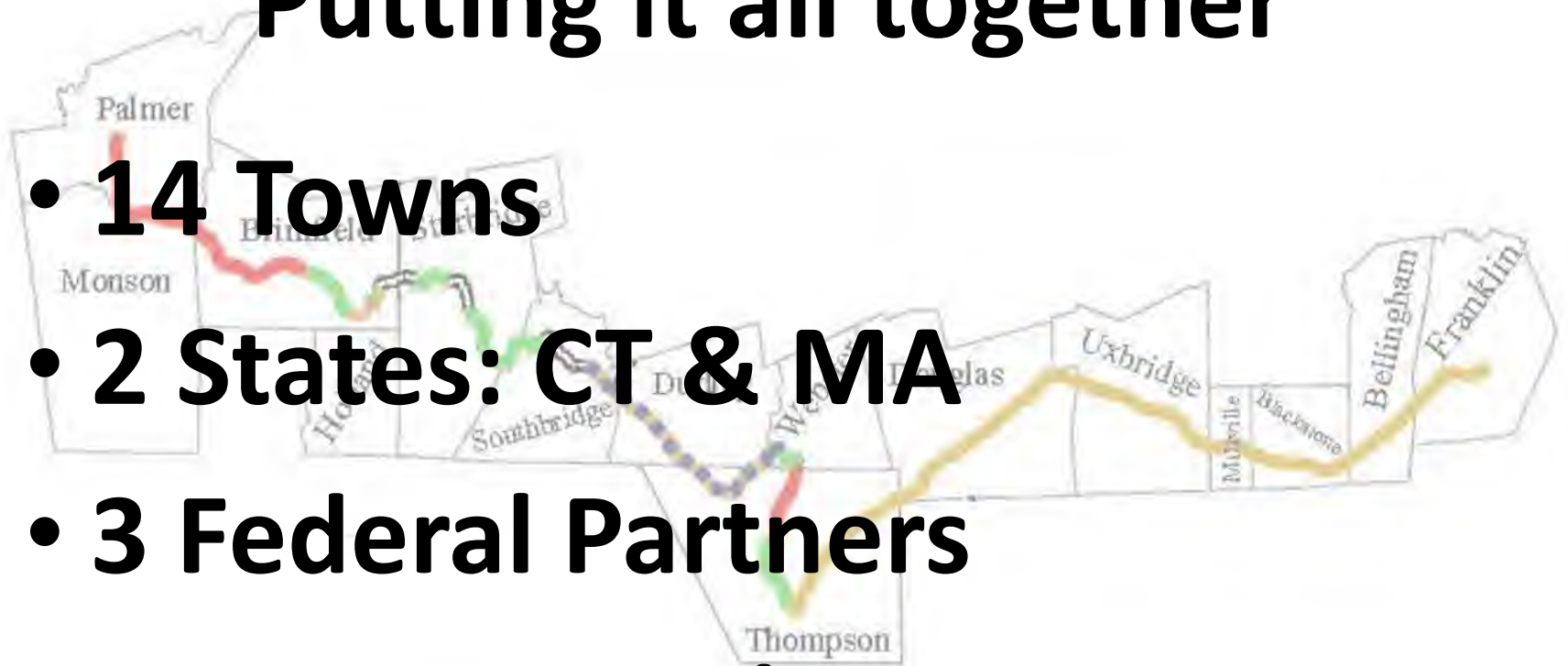


- **8 Community Service/Friends of Trail;**
 - Opacum Land Trust
 - Dudley Conservation Land Trust
 - Odd Fellows Lodge 71
 - Friends of SNETT
 - French River Connection
 - Thompson Together
 - Bay State Trail Riders
 - Grand Trunk Trail Blazers

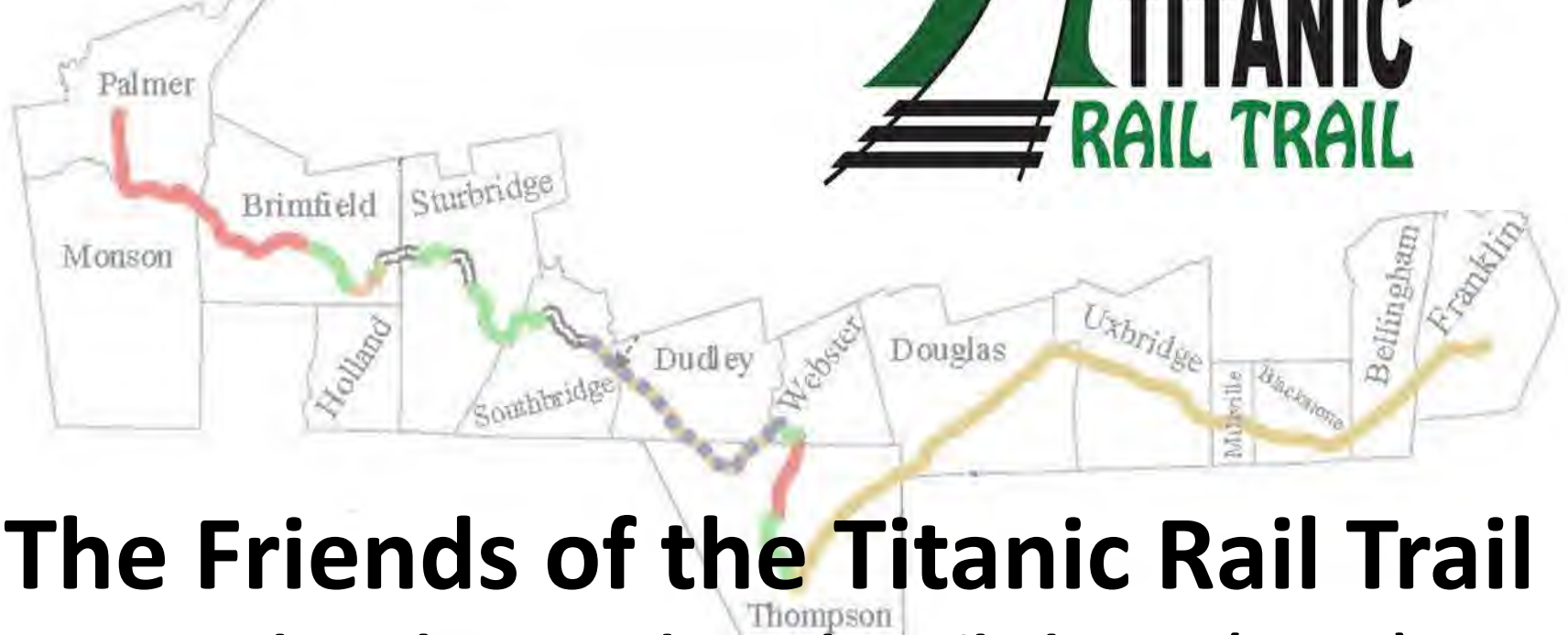
Assembling the Ingredients:

Putting it all together

- **14 Towns**
- **2 States: CT & MA**
- **3 Federal Partners**
- **6 State Agencies**
- **8 Community Groups**

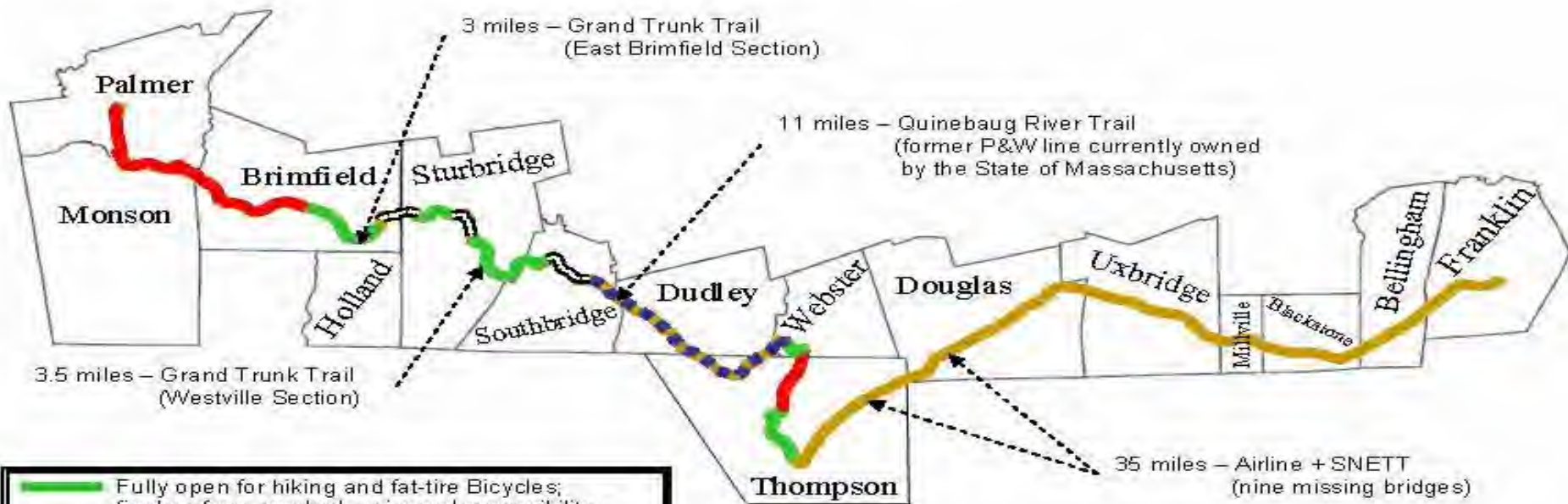


The Pot:



- **The Friends of the Titanic Rail Trail**
 - Started as The Grand Trunk Trail Blazers (GTTB) a non-profit 501(3)c chartered in 1992. Their goal is to collaborate with local trail groups to establish a non-motorized 60-80 mile East-West trail linking the Blackstone with the Pioneer Valley now named 'The Titanic Rail Trail'.

THE TITANIC RAIL TRAIL



	Fully open for hiking and fat-tire Bicycles; final surface, marked, universal accessibility
	Open for hiking and fat-tire bicycles, rough surface, missing bridges, not well marked
	Currently on-road
	Closed - Trail planning underway
	Proposed



Letting It Simmer:

The slow progress



- Organizing started in 1992: GTTB
- Fell into dormancy after a few years, little success
- Revived in 2000 with MA Interest in Economic Dev., Corps of Engineers, NPS, 2 Towns & Opacum Land Trust

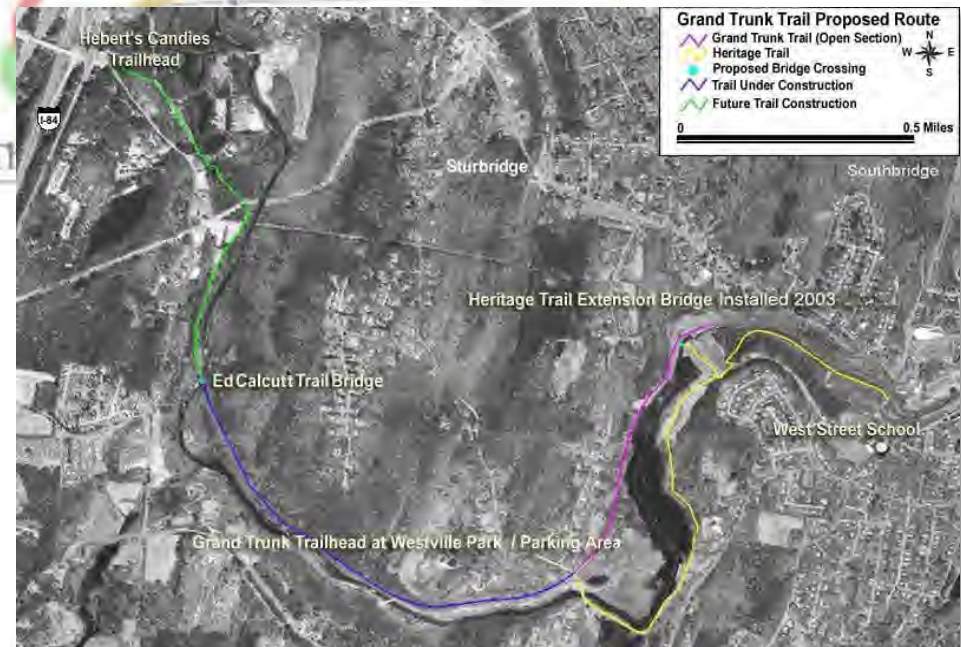


Letting It Simmer:

The slow progress

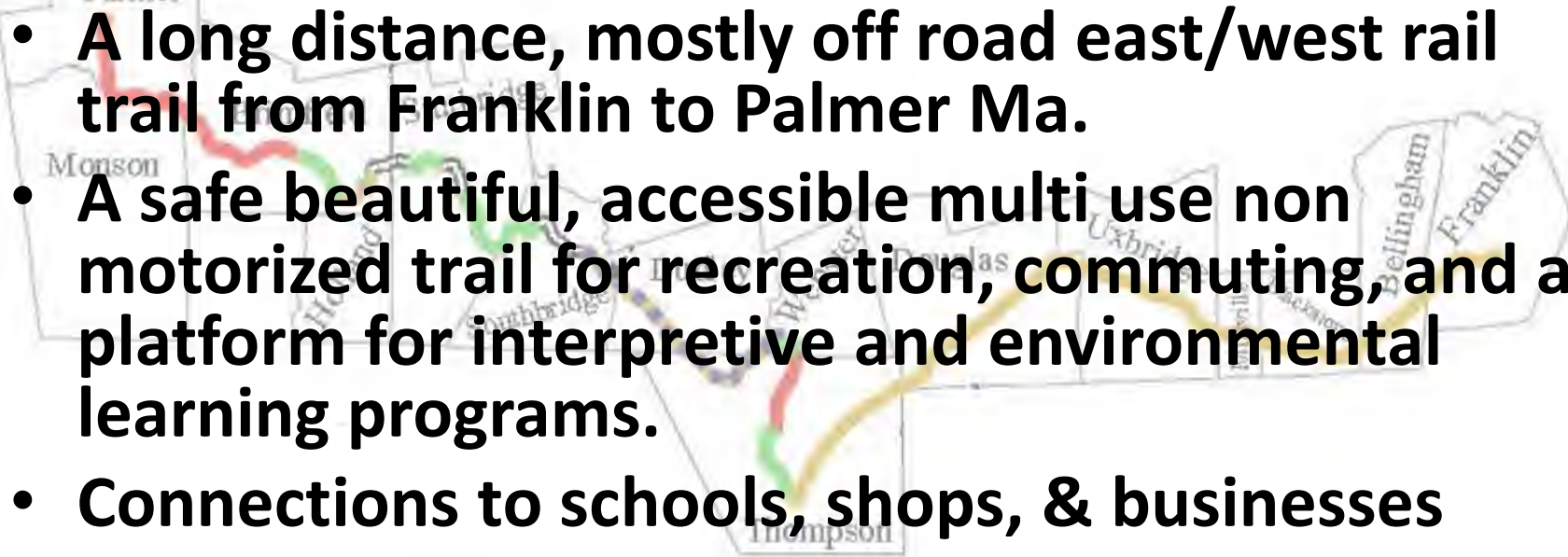


- This effort re started the GTTB as trail advocates, working on building partnerships along the 66 mile route today
- Re-branded as the Friends of the Titanic Rail Trail in 2013



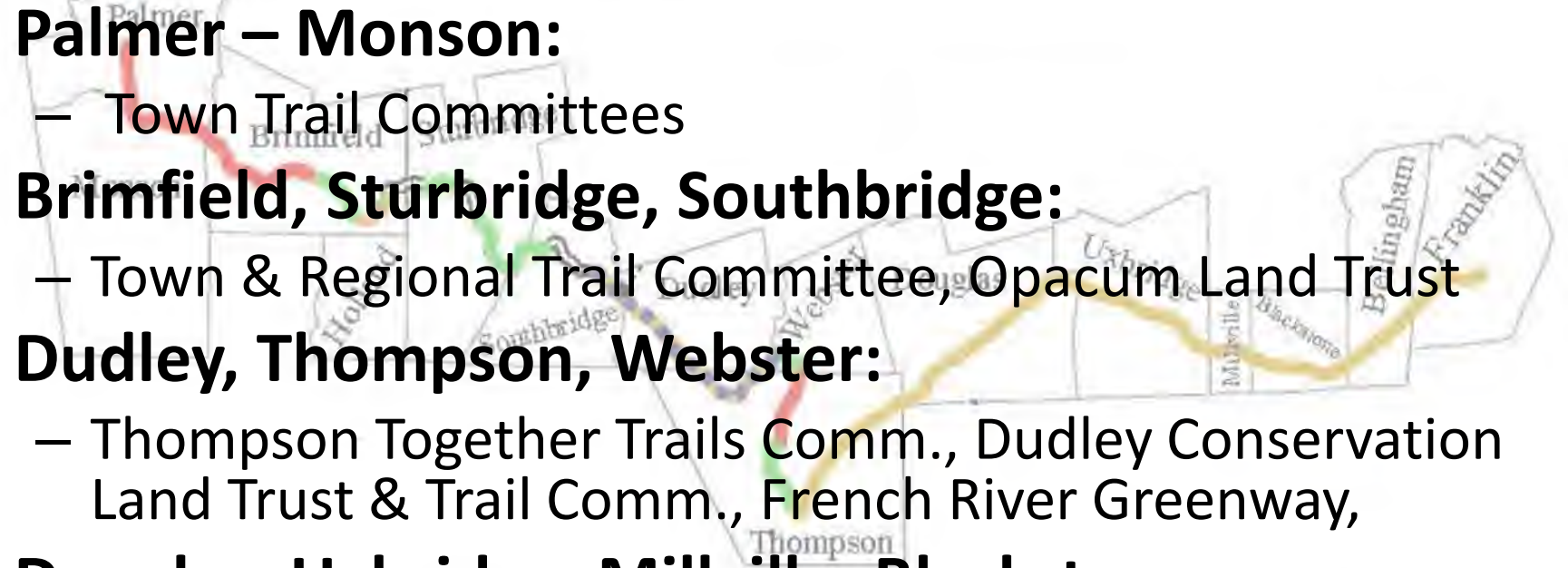
Letting It Simmer:

A Town by Town Promotion:

- 
- **A long distance, mostly off road east/west rail trail from Franklin to Palmer Ma.**
 - **A safe beautiful, accessible multi use non motorized trail for recreation, commuting, and a platform for interpretive and environmental learning programs.**
 - **Connections to schools, shops, & businesses**
 - **A trail that respects the industrial Heritage of the Region.**
 - **A rallying point for the community and source of pride.**
 - **Providing links to several north/south rail trails**

Letting It Simmer:

Organized Regional Trail Sections:

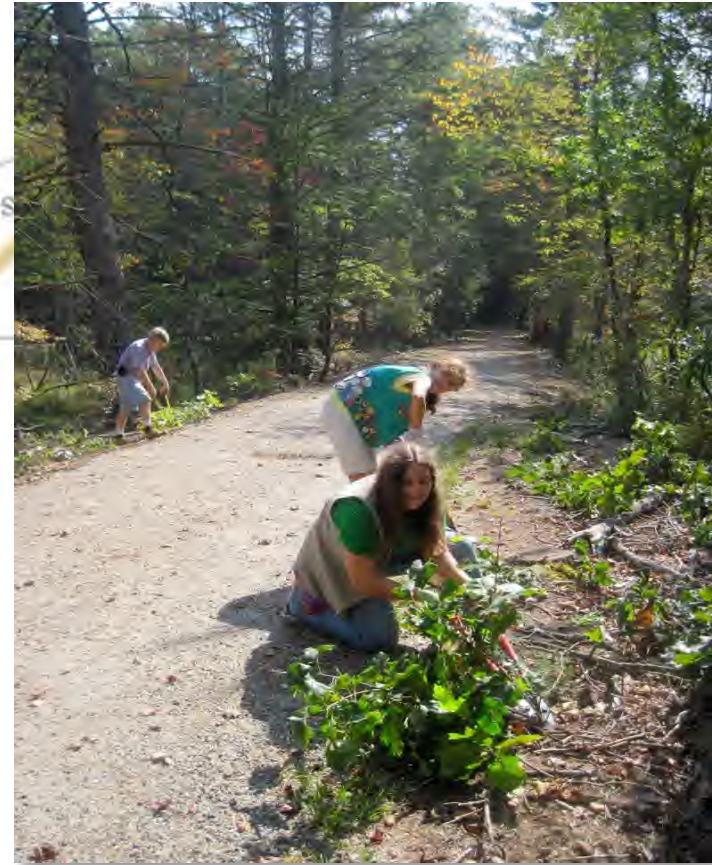
- **Palmer – Monson:**
 - Town Trail Committees
 - **Brimfield, Sturbridge, Southbridge:**
 - Town & Regional Trail Committee, Opacum Land Trust
 - **Dudley, Thompson, Webster:**
 - Thompson Together Trails Comm., Dudley Conservation Land Trust & Trail Comm., French River Greenway,
 - **Douglas, Uxbridge, Millville, Blackstone:**
 - Bay State Trail Riders Assoc, Mass DCR, & Friends of the SNETT
 - **Bellingham - Franklin:**
 - Franklin Citizens Rail Trail Comm, Odd Fellows, Mass DCR, Bellingham Trail Comm. & Friends of the SNETT
- 

Letting It Simmer:

Today:



- **Advocacy & partnership building continues in each town with at least 1 group promoting the trail.**
- **Friends of the SNETT in partnership with NPS-RTCA**
- **The details of route planning, grants, & construction in stages underway in several communities.**
- **A continuing need to keep a strong volunteer base**



When Do We Eat!

Celebrating our success!



- **2-3 years:** Completed trail wide organization and planning, partnerships fully identified and working, continue small local grant projects
- **3-5 years:** Numerous 10 Mile (+) sections fully constructed and open for use
- **5-15 years:** Major funding projects (Bridges) and final route addressed
- **15-20 years:** Trail Complete



Reviewing the Steps:

- Start building small and local, find your friends!
- Have a vision! THINK BIG = “66 Mile trail”
- Link with or Create a 501(3)c,
- Identify Partners,
How can we help each other?





Reviewing the Steps:

- Build on small successes, *the big ones take time!*
- Celebrate every opportunity ***GET THE WORD OUT!***

- Key word: Net work!

Keep developing those partnerships!

- Remember: Rome was not built in one day!

Building trails takes time, partners, patience & money!





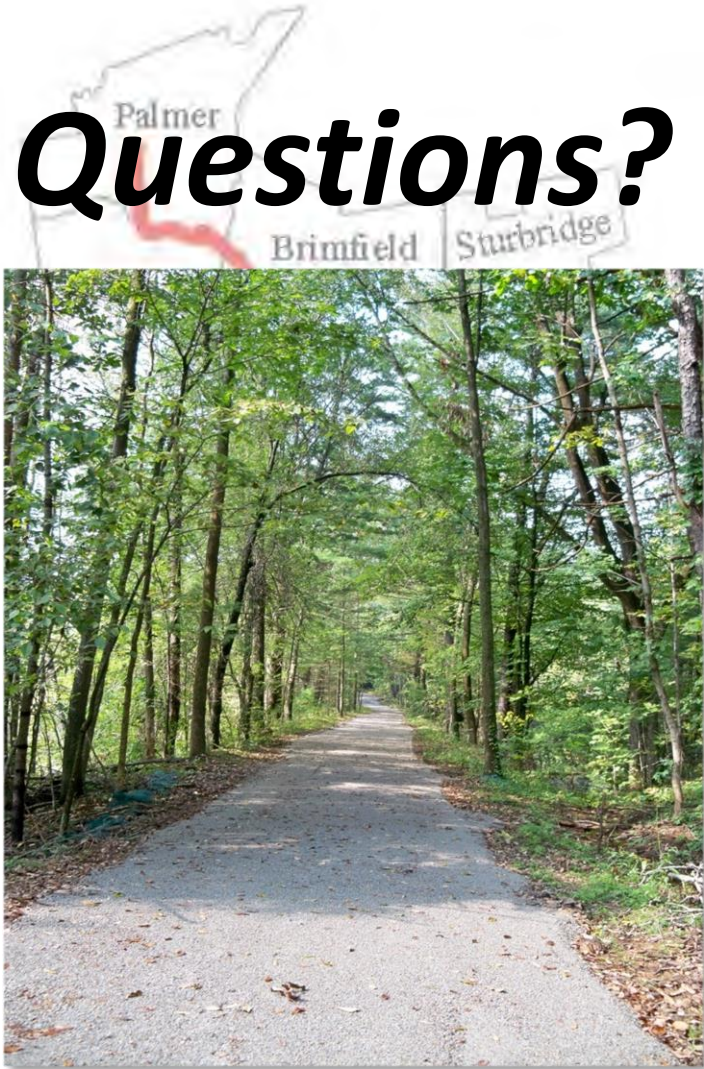
Useful Links & - More information

- **Friends of the Titanic Rail Trail (GTTB)**
<https://www.facebook.com/Grand-Trunk-Trail-Blazers>
- **Brimfield section of the TRT:**
<https://sites.google.com/site/brimfieldtrail/>
- **NPS: Rivers, Trails & Conservation Asst.**
<http://www.nps.gov/orgs/rtca/index.htm>
- **Franklin-Bellingham Rail trail committee**
<http://www.franklinbellinghamrailtrail.org/>
- **Friends of the SNETT**
<http://snett.org/home/>
- **Sturbridge Trails**
<http://www.sturbridgetrails.org/>



THE TITANIC RAIL TRAIL

- ***Questions?***



Tchamberland@town.sturbridge.ma.us