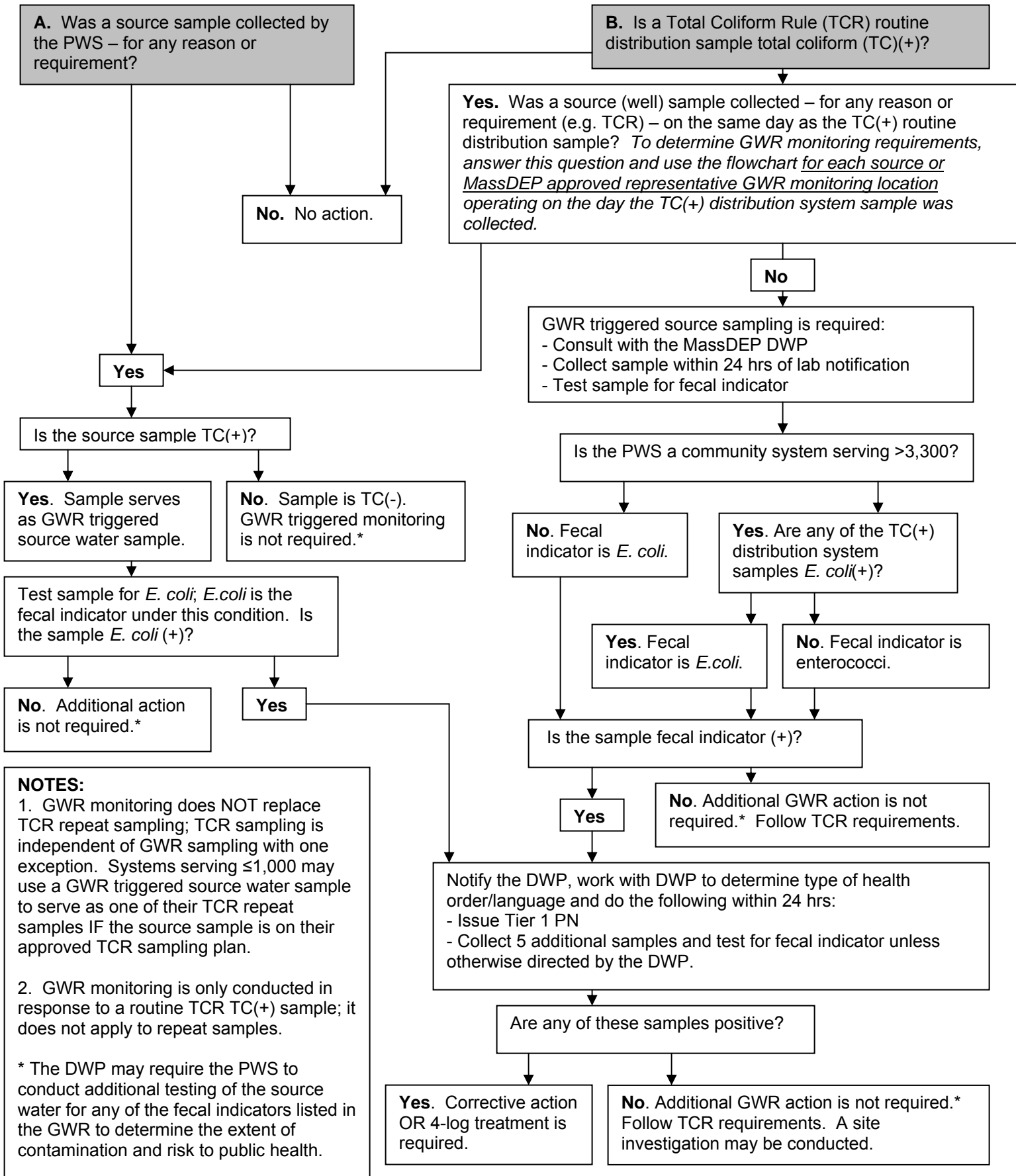




Ground Water Rule (GWR) – Source Water Monitoring Requirements

For all public water systems with groundwater sources that are not treated for 4-log virus removal.



NOTES:

1. GWR monitoring does NOT replace TCR repeat sampling; TCR sampling is independent of GWR sampling with one exception. Systems serving ≤1,000 may use a GWR triggered source water sample to serve as one of their TCR repeat samples IF the source sample is on their approved TCR sampling plan.

2. GWR monitoring is only conducted in response to a routine TCR TC(+) sample; it does not apply to repeat samples.

* The DWP may require the PWS to conduct additional testing of the source water for any of the fecal indicators listed in the GWR to determine the extent of contamination and risk to public health.