



Behind-the-Meter	Standalone
 <p data-bbox="363 905 942 1125">System that serves on-site load other than parasitic or station load utilized to operate the unit</p>	 <p data-bbox="993 905 1619 1125">System that serves no associated on-site load other than parasitic or station load utilized to operate the unit</p>

Behind the meter systems will be compensated differently than standalone systems

Metering Views

< 60 kW = Watthr Meter

> 60 kW = Interval Meters

RETAIL

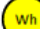


Residential/Commercial DG Customer Behind the Meter MA SMART < 60 kW

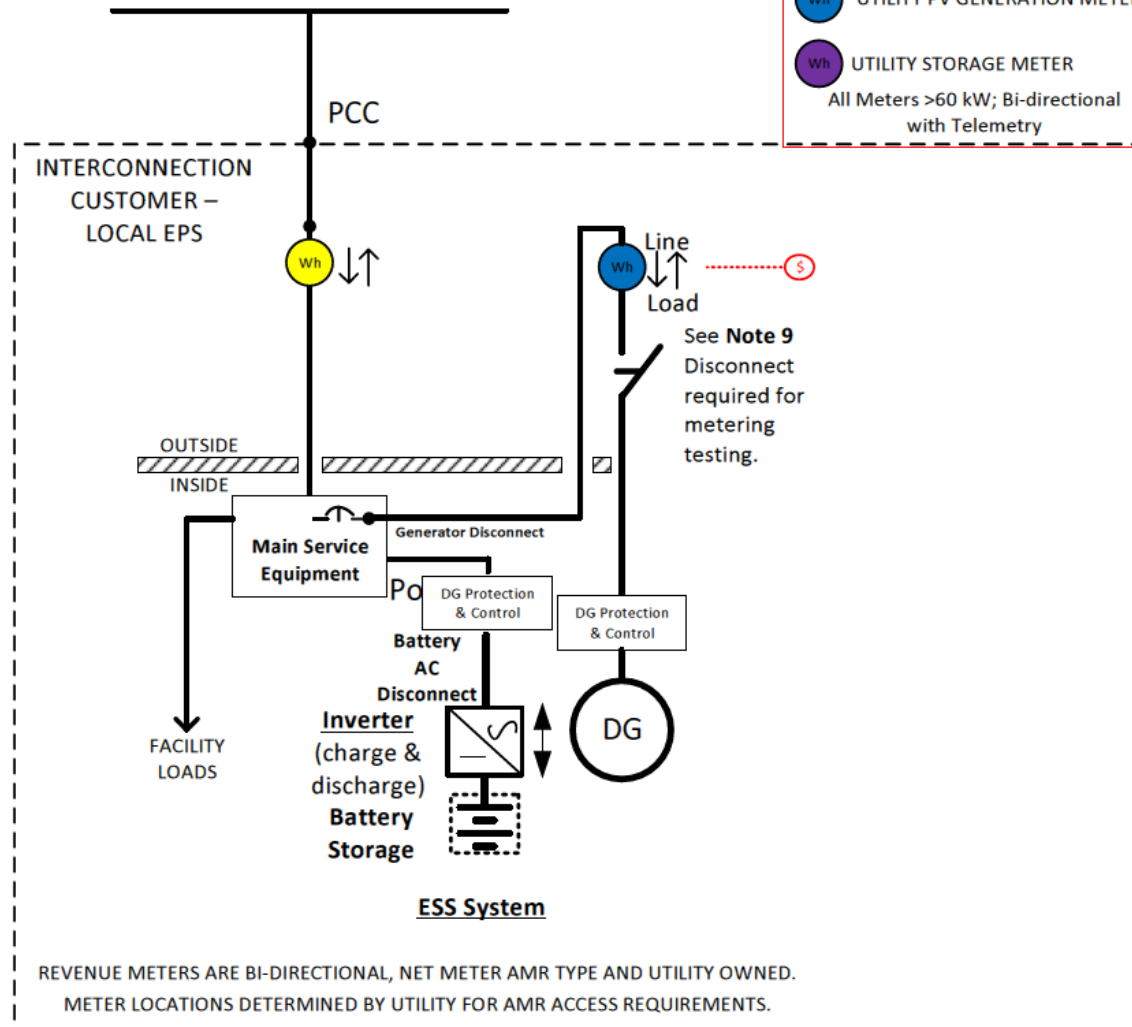
With AC ESS SYSTEM

UTILITY – AREA EPS

1c

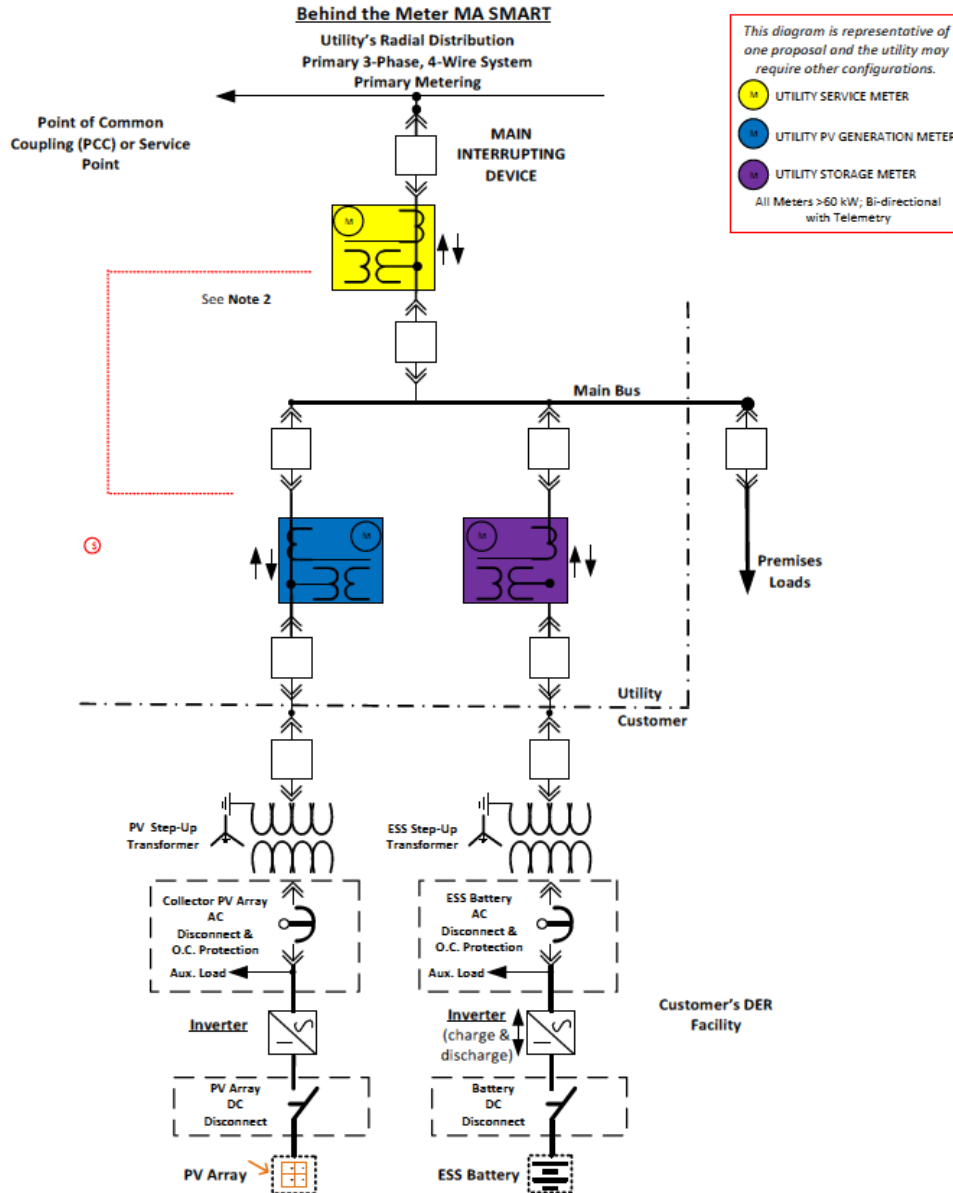
This diagram is representative of one proposal and the utility may require other configurations.

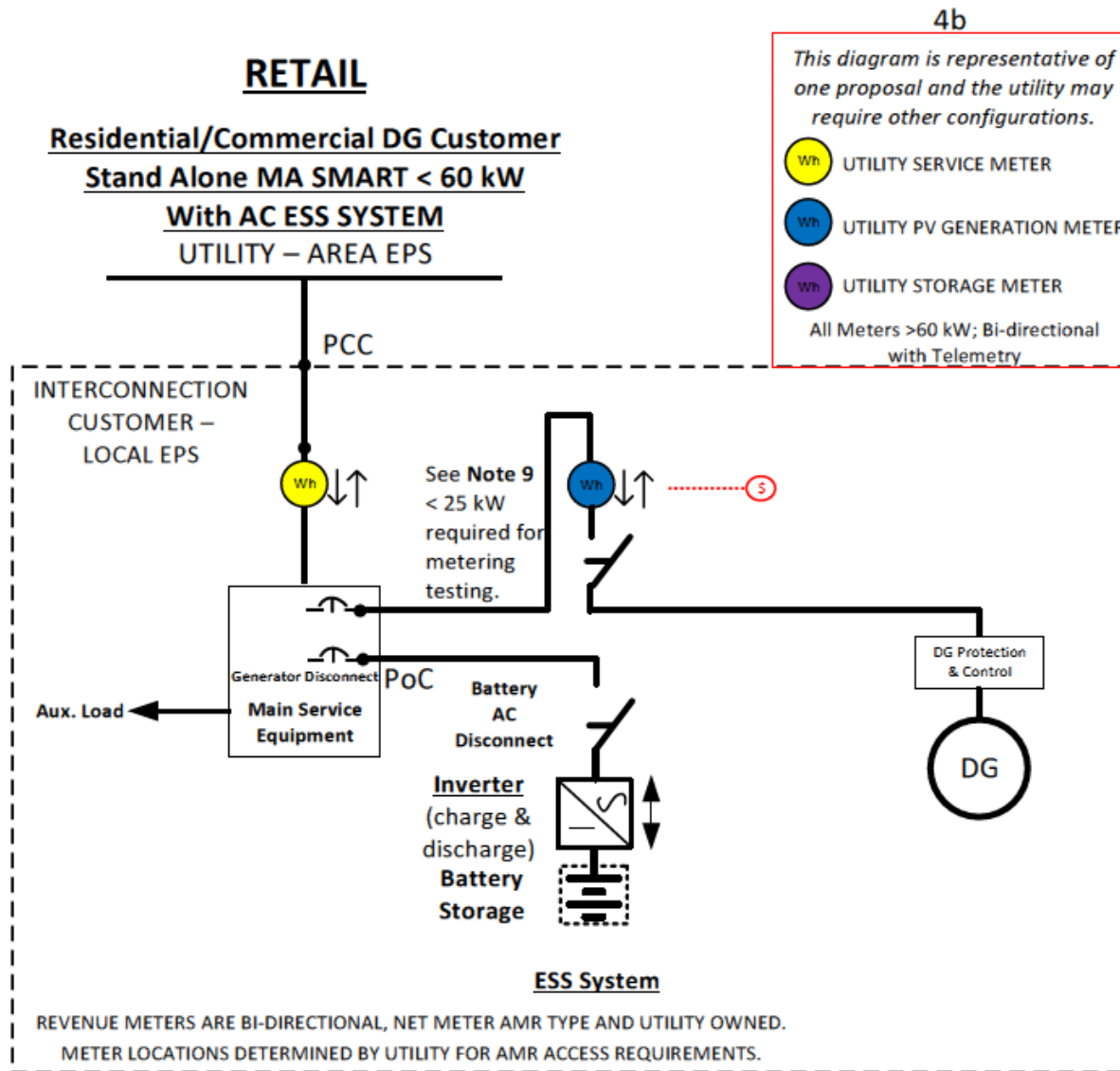
-  UTILITY SERVICE METER
 -  UTILITY PV GENERATION METER
 -  UTILITY STORAGE METER
- All Meters >60 kW; Bi-directional with Telemetry



ESS AC Battery + STGU Paired AC Connection to Utility EPS 500kW and Greater

3b

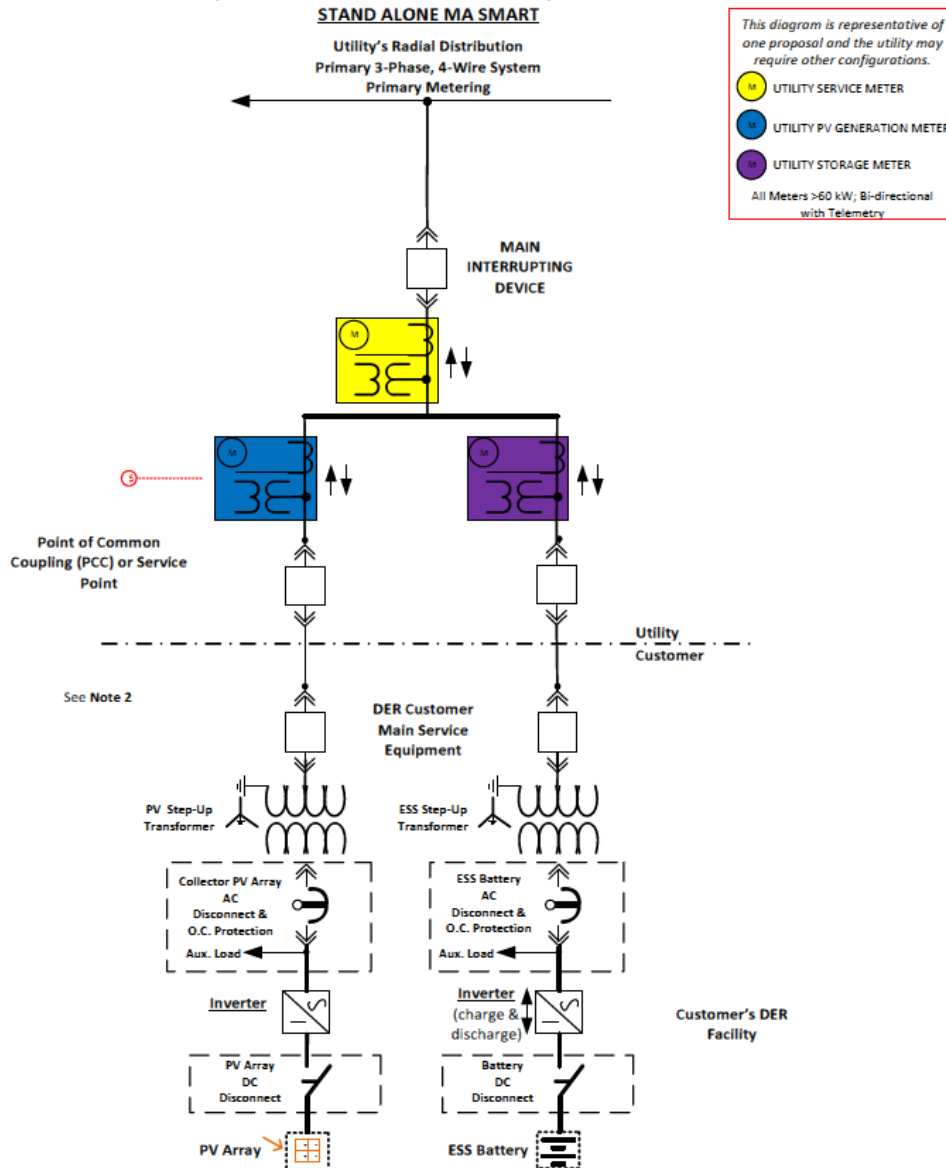




Stand Alone > 500 kW

AC ESS Battery + STGU Paired AC Connection to Utility EPS 500kW and Greater

6b



➤ Technical Issues:

- Moving existing meter outside to be up to code.
- Locating new meter in the “Vicinity” of the existing meter.
- Labeling appropriate socket so no confusion which socket is for which DER.
- Metering the PV generation separate from losses due to charges the battery storage system. That way payments are for all the generation.
- Location of disconnect for smaller systems to accommodate socket test.
- Possible two meter summation to accommodate split inverter function.

- Tara Reisner
- Smart Solar Program Manager
 - National Grid
 - 40 Sylvan Road
 - Waltham, MA 02451
 - (781) 907-4241
- Tara.Reisner@nationalgrid.com