

SMART Metering

TSRG Meeting March 21, 2019



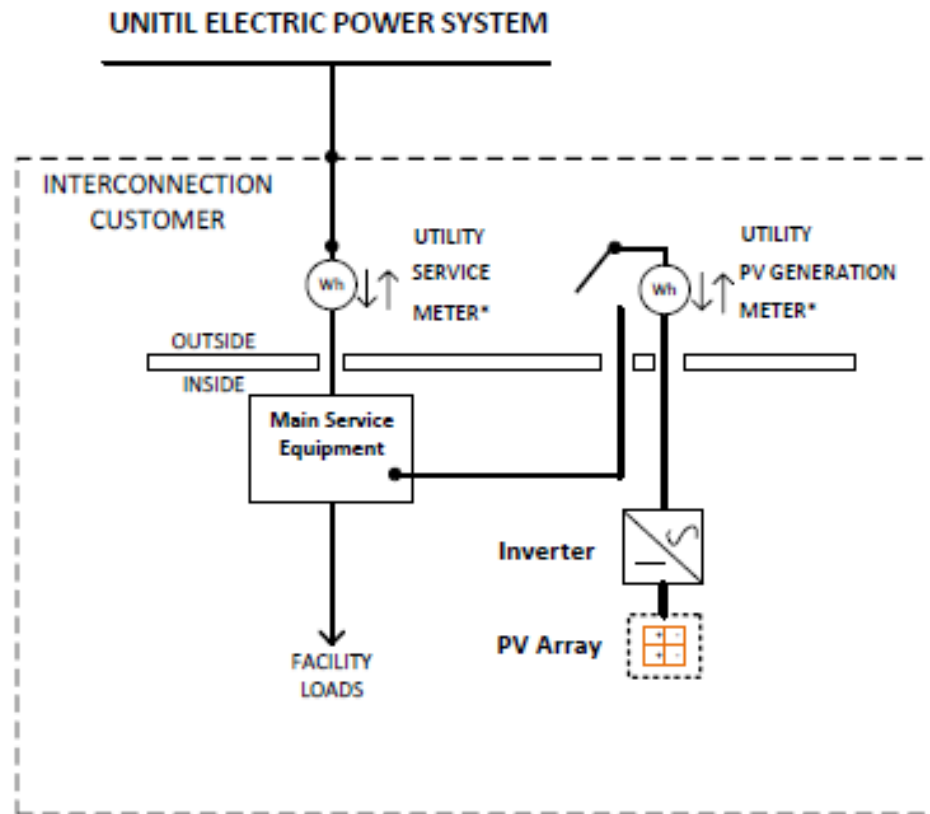
SMART Metering Guidelines

- Revenue and generation meters will be Unitil owned, bi-directional, watt-hour meters.
- Inverter outputs will be wired to the bottom of the Utility PV Generation and Utility Storage meter sockets.
- Utility Service, Utility PV Generation and Utility Storage meters will be located in close proximity of each other. Any exceptions will require prior approval from Unitil.
- Meter location and installation shall be according to Unitil's jurisdiction applicable service and tariff requirements.
- Unless located in an approved electrical utility room, existing service meter and utility PV meter will be located outside.

SMART Metering Guidelines (Cont.)

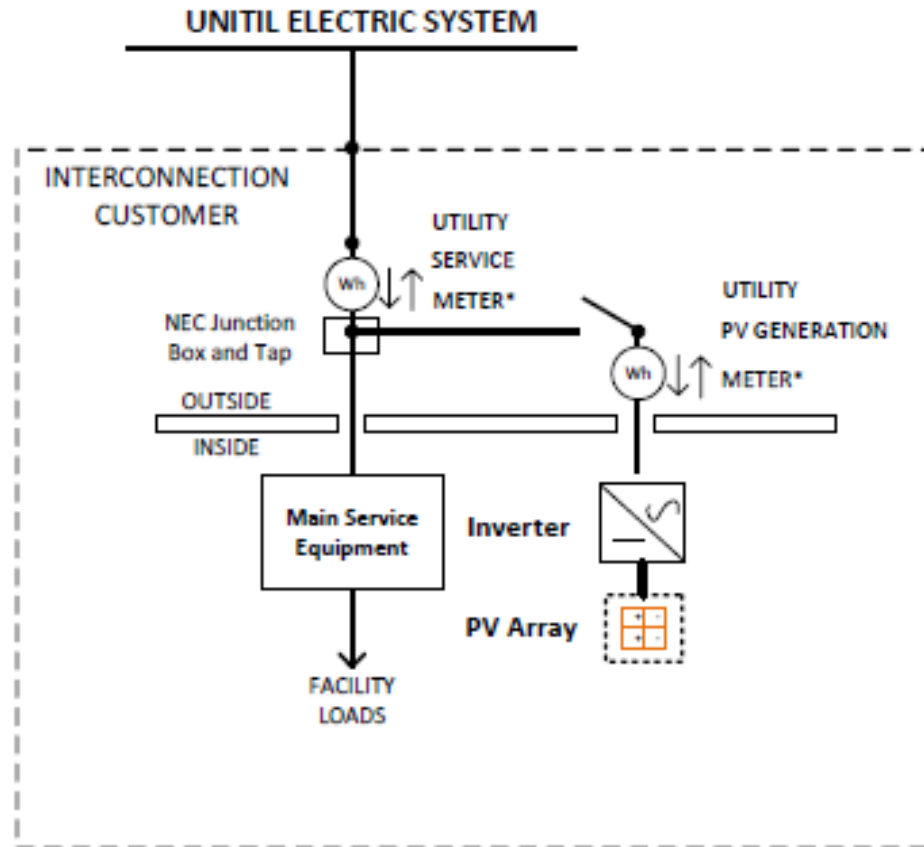
- Meter sockets up to 400 amps will be provided by the customer.
- Meter installations rated greater than 400 amps will require transformer rated metering.
- Meters connected to services or generation with AC ratings > 60 kW, will capable of recording
- interval readings and will require telemetering be available.
- Generator disconnect switch is to be installed in accordance with NEC and Unitil's interconnection requirements.

Behind the Meter Solar



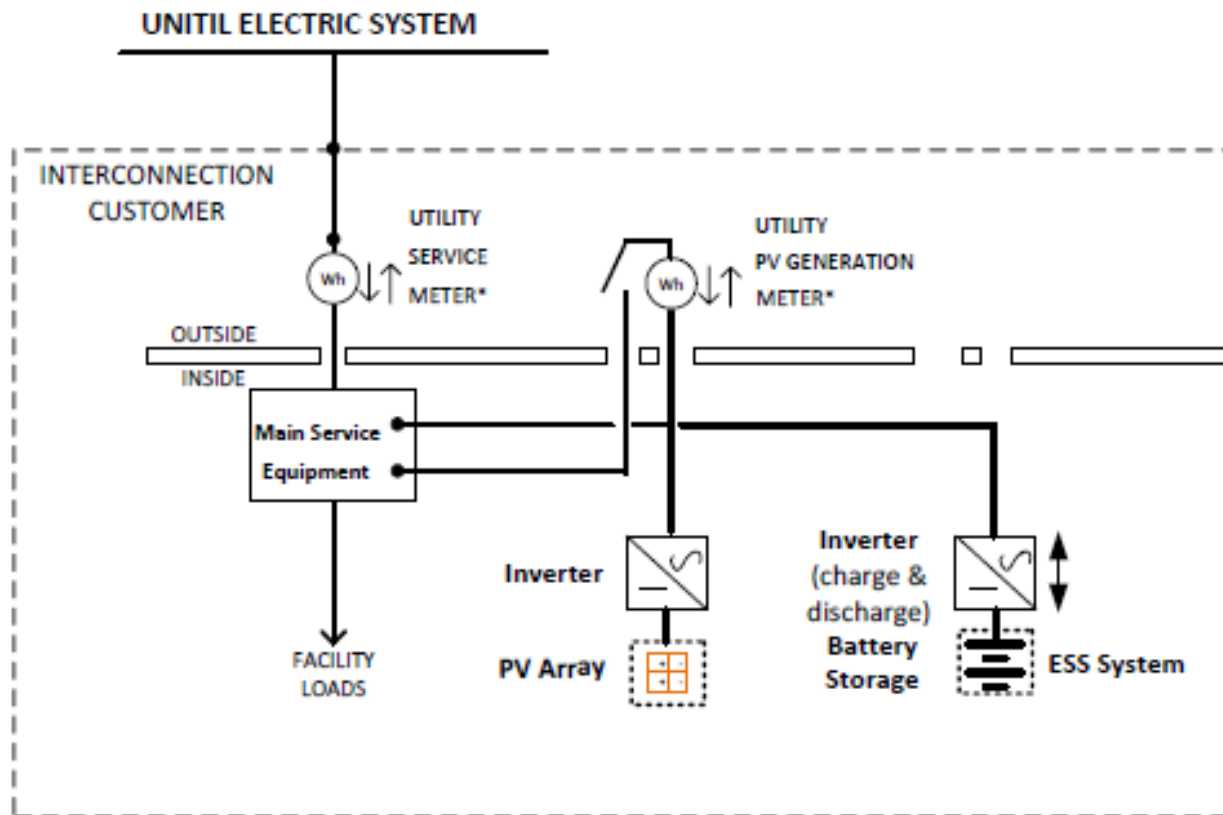
* Transformer rated metering is require for ratings > 400 amps

Behind the Meter Solar (Alt.)



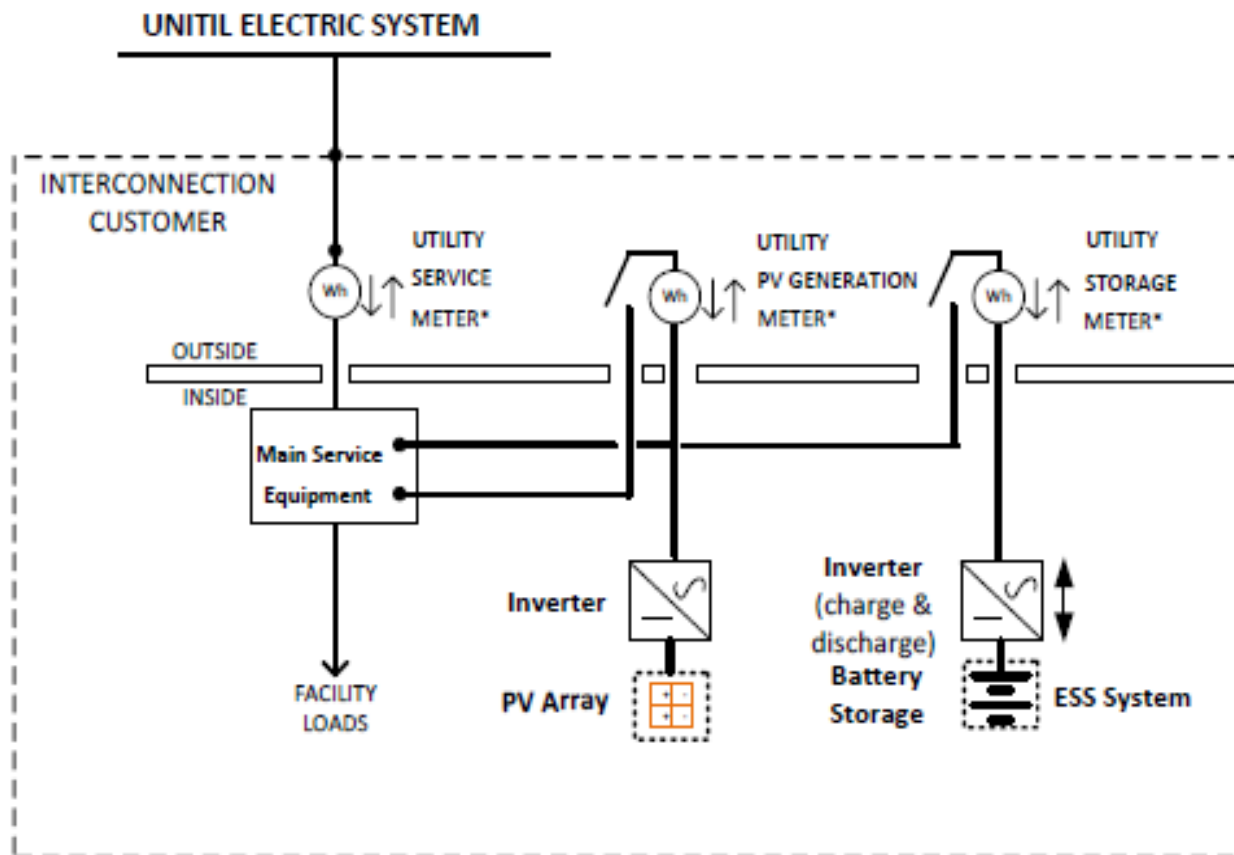
* Transformer rated metering is require for ratings > 400 amps

Behind the Meter Solar AC Coupled with Storage ≤ 60 kW



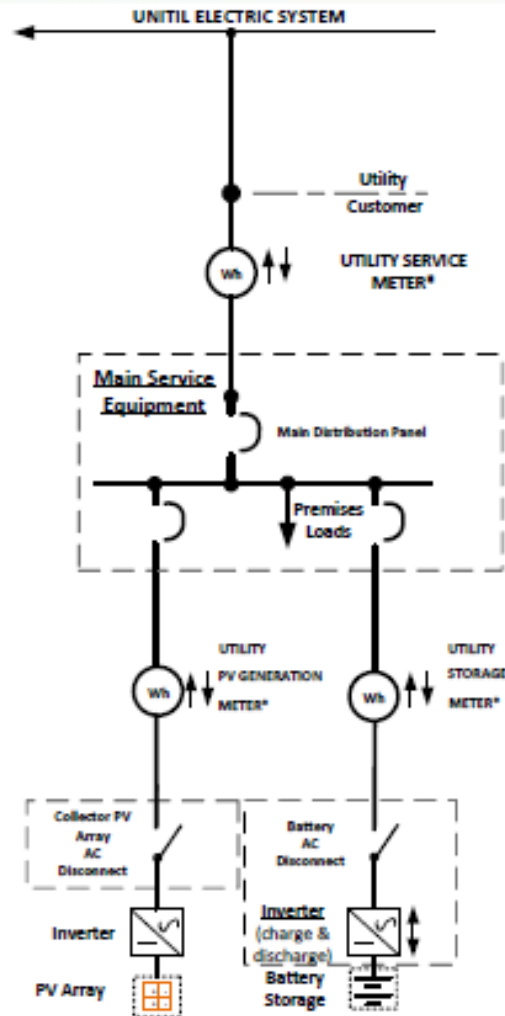
* Transformer rated metering is require for ratings > 400 amps

Behind the Meter Solar AC Coupled with Storage ≤ 60 kW w/storage registered with ISO NE



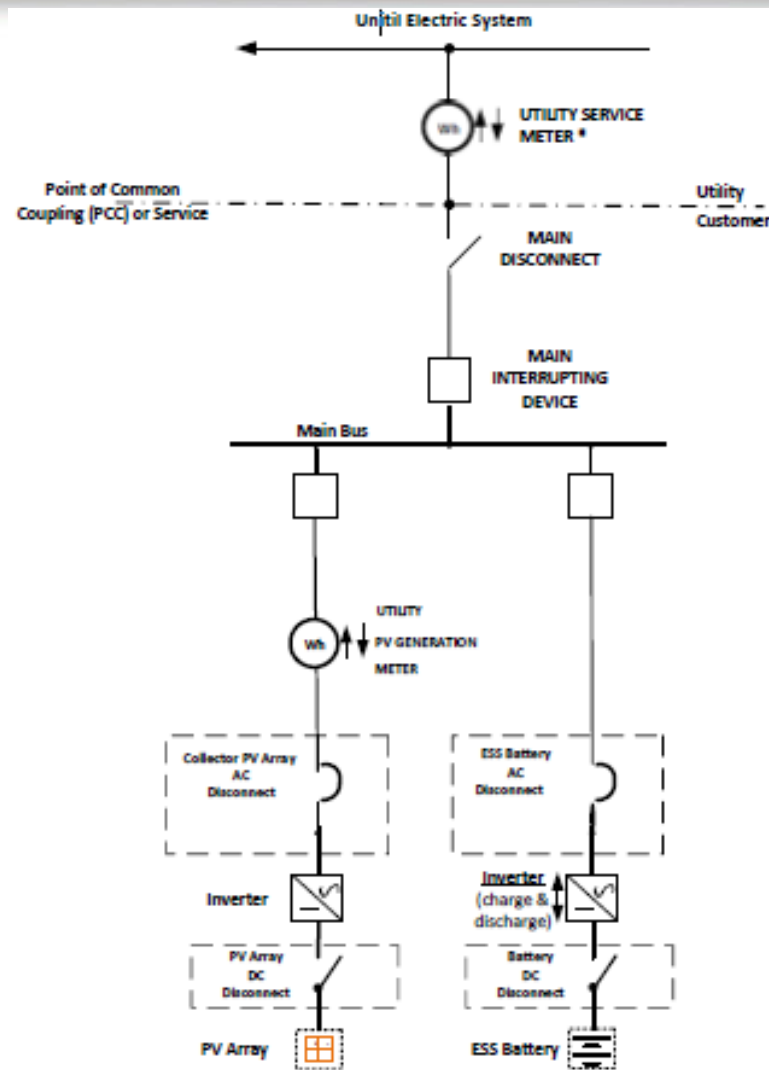
* Transformer rated metering is require for ratings > 400 amps

Behind the Meter Solar > 6kW AC Coupled with Storage > 6kW



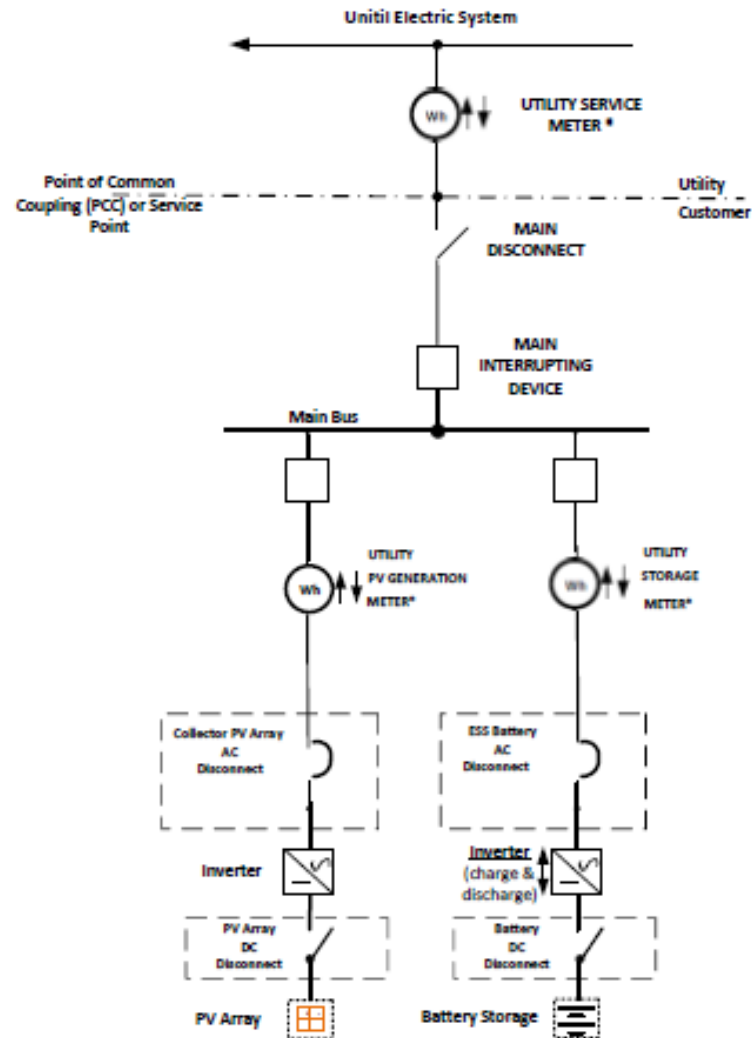
* Telemetered, interval meter - transformer rated metering is require for ratings > 400 amps

Stand Alone Solar AC Coupled with Storage $\leq 60\text{kW}$



* Transformer rated metering is require for ratings > 400 amps

Stand Alone Solar AC Coupled with Storage > 60kW



* Transformer rated metering is require for ratings > 400 amps