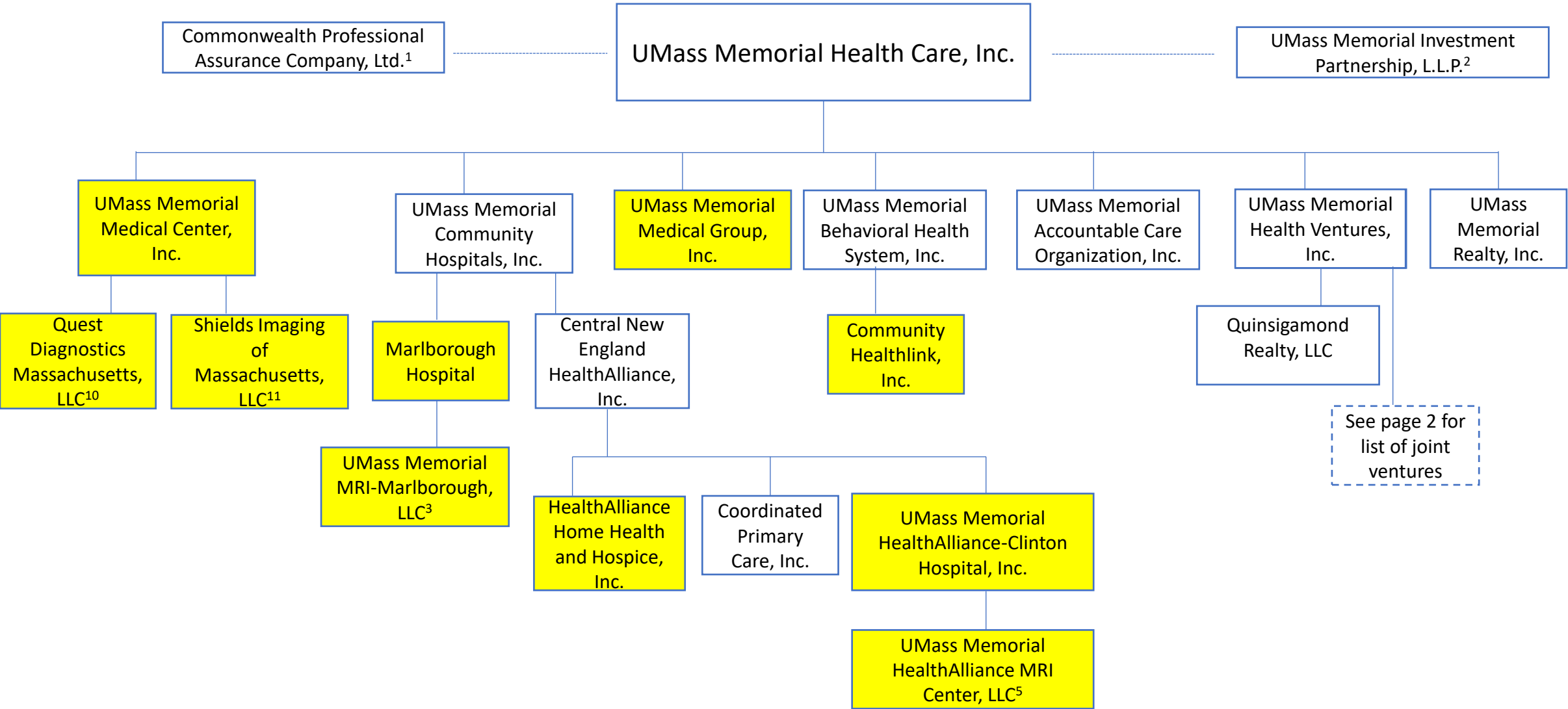
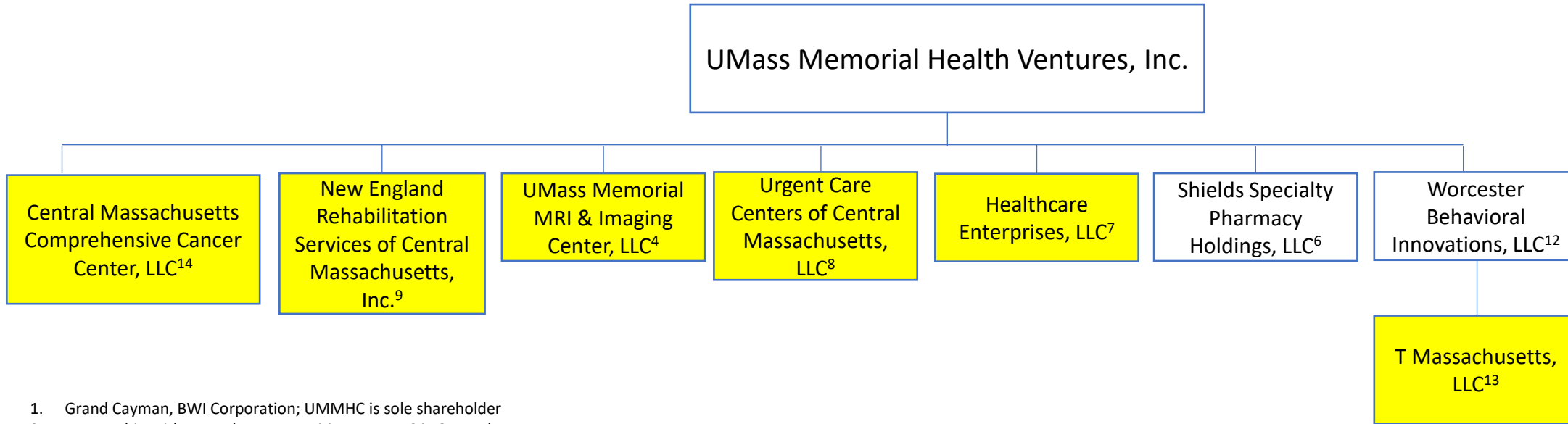


UMass Memorial Health Care and Subsidiaries



UMass Memorial Health Care Joint Ventures



1. Grand Cayman, BWI Corporation; UMMHC is sole shareholder
2. Partnership with several system entities; UMMHC is General Partner
3. *Joint Venture-Marlborough Hospital, Shields Imaging of Marlborough, UMMHV (55/40/5)*
4. *Joint Venture-UMMHV, Shields Healthcare Worcester (50/50)*
5. *Joint Venture-HealthAlliance Hospitals, UMMHV, Shields Healthcare of Leominster (40/20/40)*
6. *Joint Venture-UMMHV, Shields Pharmacy Equity, Shields Pharmacy Employees, John Shields (43/26/17.5/13)*
7. *Joint Venture-UMMHV, Reliant Medical Group, Worcester ASC, LLC (Shields (49/26.1/24.9)*
8. *Joint Venture-UMMHV, Urgent Care Centers of New England, Inc. (49/51)*
9. *Joint Venture-UMMHV, New England Rehabilitation Services of Central Massachusetts, Inc. (Fairlawn Rehabilitation Hospital) (Ventures 20/Encompass Health 80)*
10. *Joint Venture-UMMMC and Quest Diagnostics, LLC (18.9/81.1)*
11. *Joint Venture-UMMMC, Shields Imaging of NE, LLC, Baystate Radiology & Imaging, LLC and South Shore Hospital (25/25/25/25)*
12. *Joint Venture-UMMHV, Lola Development, LLC (33.33/66.67)*
13. *Wholly-owned subsidiary of Worcester Behavioral Innovations, LLC*
14. *Joint Venture-NE Radiation Therapy Management Services (21st Century) (72.5%), Harrington Hospital (22.5%) and UMMHV (5%)*

Indicates Clinical Entity