

Registration Cancelled Field

[More Info on RMV](#)[View this email in your browser](#)

"Registration Cancelled" Field Change

Effective Thursday, January 16, 2025

Dear Business Partner:

Effective January 16, 2025, the "Registration Cancelled" field in the RMV eServices Insurance Portal will no longer be displayed from the vehicle screen.

Instead, the "Registration Cancelled" date can be retrieved from the Portal as follows:

1. Go to the **Vehicle Information** screen,
2. View the **Registration** tab, then the **Plates** sub-tab, and
3. Under the **Cease** column, the date will reflect when a registration cancellation was processed.

Supportive Document

- Please review the [IPM Instructions](#) which will guide you through the updated process and also provide screen shots of the new fields to obtain the "Registration Cancelled" date.

[Subscribe](#)[Past Issues](#)[Translate ▼](#)

Questions?

- Please send an email to AtlasIPM@dot.state.ma.us
- For documents and information, visit the [IPM Resource page](#)

Stay Connected!

- For the latest RMV updates and information, follow the RMV on X [@MassRMV](#).
- For the latest MassDOT news and information, including RMV updates, follow MassDOT on X [@MassDOT](#), [Facebook](#), and [Instagram](#).

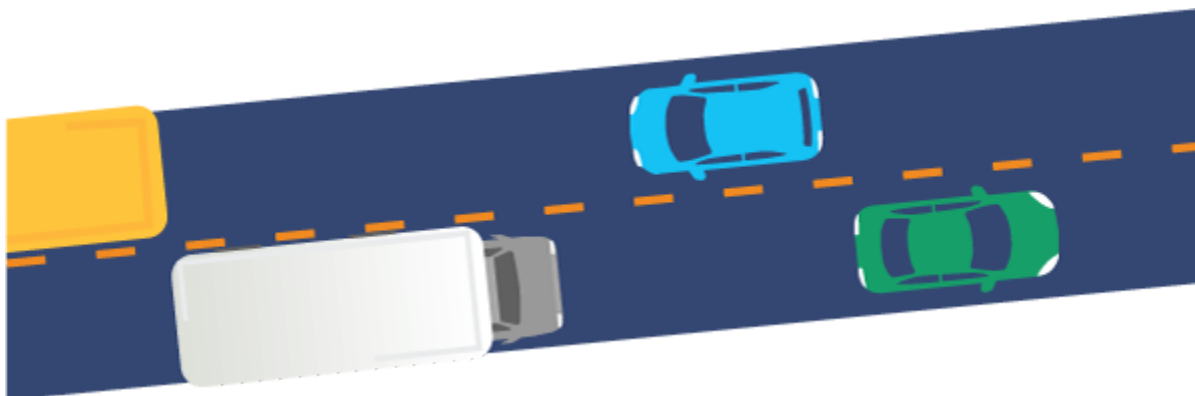
Thank you for your continued partnership.



Massachusetts Registry of Motor Vehicles

The Registry of Motor Vehicles credentials and delivers driver, non-driver, and vehicle services. We are also responsible for making sure all drivers, as well as the vehicles on our roadways, are safe and fit to operate.

For your protection, please do not email personal information (e.g., Social Security Number, Credit Card Numbers, Passwords).



Copyright © 2025 RMV Communications, All rights reserved.

List created from Security list of contacts

Our mailing address is:

RMV Communications
25 Newport Avenue Ext
Quincy, MA 02171-1748

Want to change how you receive these emails?

You can [update your preferences](#) or [unsubscribe from this list](#).

[Subscribe](#)

[Past Issues](#)

[Translate ▼](#)

This email was sent to
RMV Communications · 25 Newport Avenue Ext · Quincy, MA 02171-1748 ·
USA