



- Proven
- Reliable

Since 1998



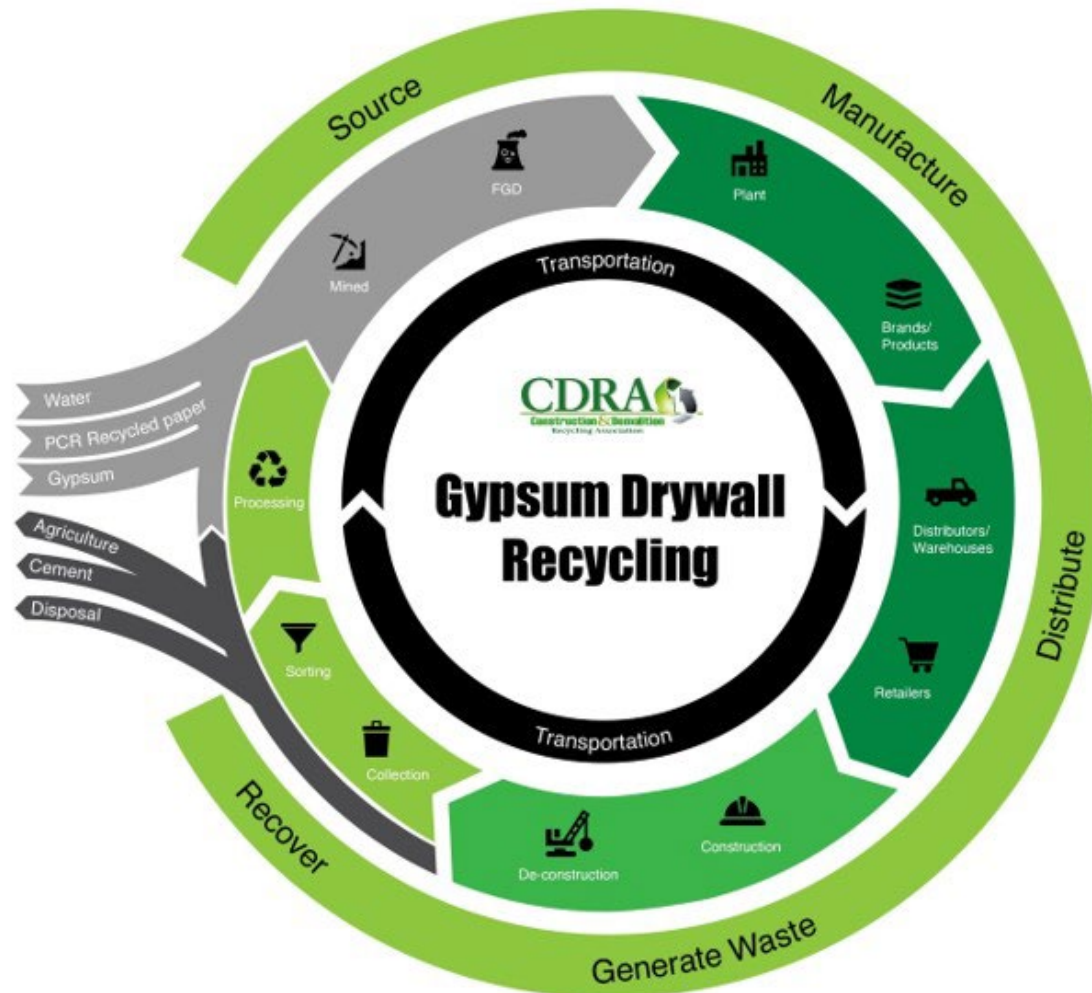
From a Waste to a Resource

Market drivers

- ▶ Mining cost
- ▶ Synthetic supply
- ▶ Carbon footprints
- ▶ Disposal cost
- ▶ Landfill odors
- ▶ Contaminates recovered gas and leachate

CDRA Drywall Recycling Committee

Collaboration of stakeholders



Annual Drywall Sales

*Board Sold 17.6 million U.S. tons
831,000 ton Sold to New England*

USGS 2022

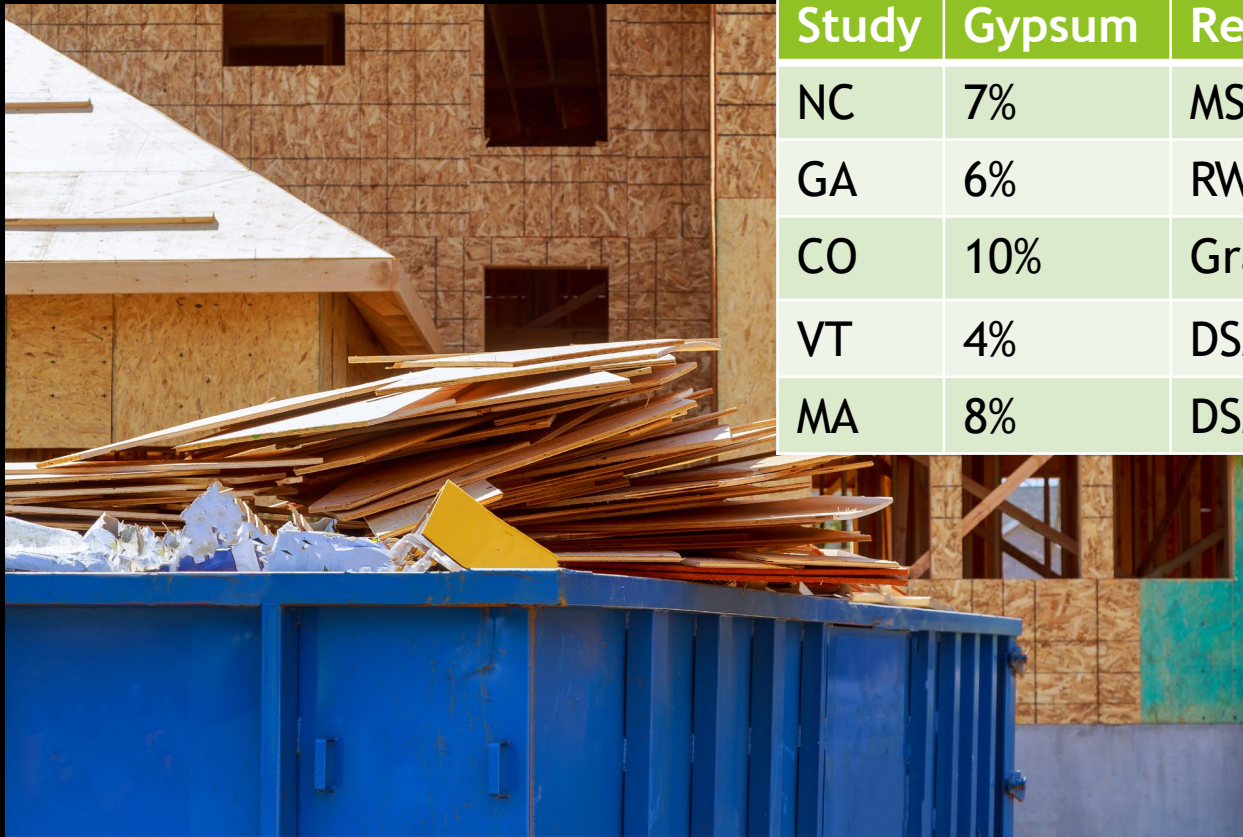


State	Population	%	Tons Shipped	Waste 15%
CT	3,626,205	24	199,172	29,876
MA	6,981,974	46	383,489	57,523
ME	1,385,340	9	76,091	11,414
NH	1,395,231	9	76,634	11,495
RI	1,093,734	7	60,074	9,011
VT	647,064	4	35,540	5,331
Total	15,129,548	100	831,000	124,650

- *New Board shipped to New England USGS 2022*
- *Population 2022 Census*

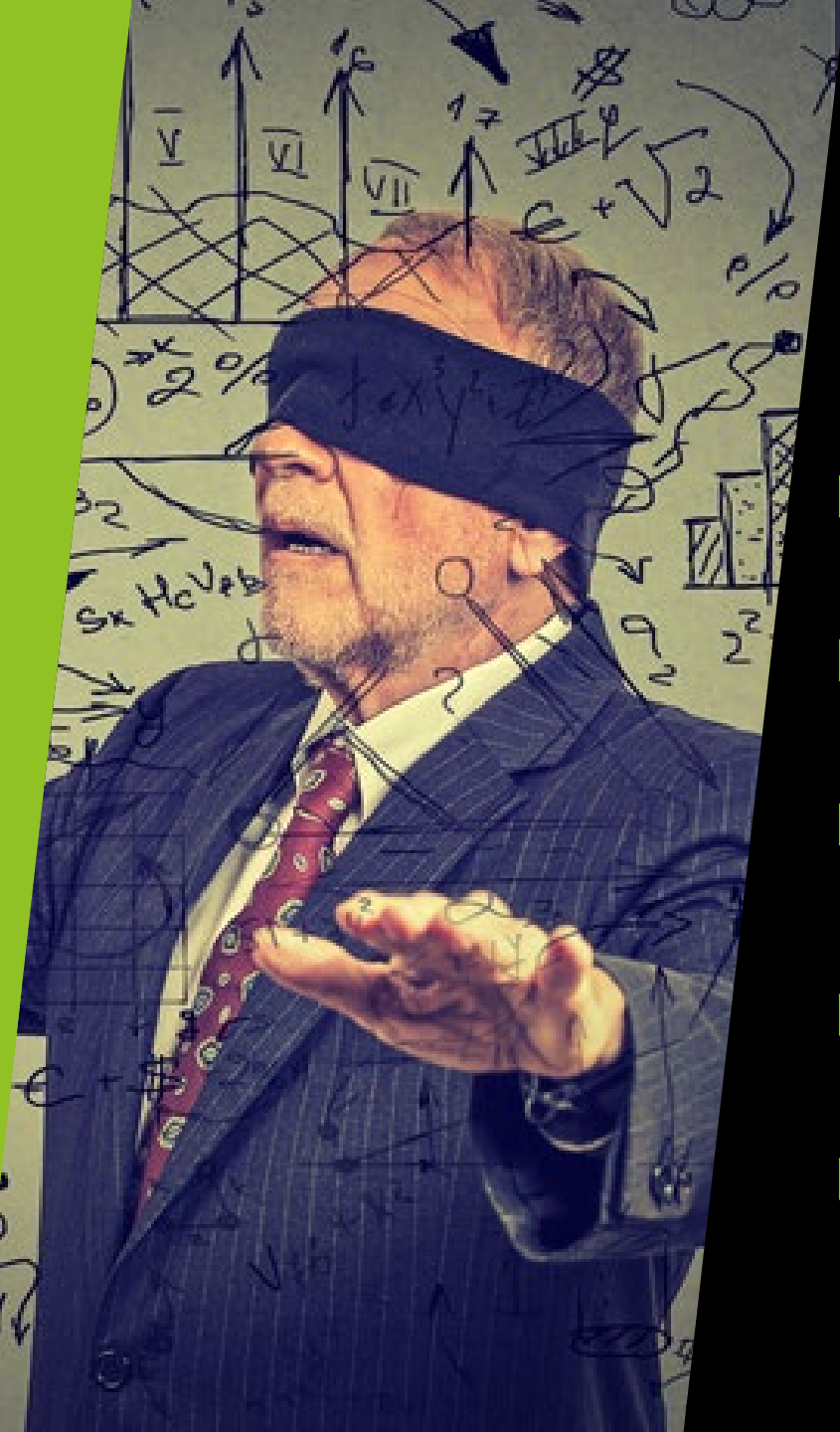
Mixed C&D Waste Composition

7% gypsum average



Study	Gypsum	Ref.
NC	7%	MSW C 2008
GA	6%	RW B 2008
CO	10%	Grace 2009
VT	4%	DSM 2013
MA	8%	DSM 2017

Source C&D Debris Townsend



Cutting through the data clutter

My estimate

- ▶ 1,545,304 ton mixed waste
- ▶ 7% gypsum = 108,171 ton
- ▶ 1% Clean = 15,453
- ▶ 3% clean = 46,359 ton
- ▶ Recycled 1,406

Types of Gypsum Drywall

Demolition concerns

- Asbestos pre-1980
- Lead paint
- Wall covering -paint



New Regular &
TypeX 86%

100% Recyclable

- Gypsum core
- Paper facing
- Moisture not important



Demolition

Specialty Board



- ▶ Fiberglass Faced Exterior
- ▶ Impact resistant

Specialty Board

- ▶ Fiberglass Facing bright colors
- ▶ Impact resistant Mesh
- ▶ Inhouse quality control for incidental to load quantities





Mixed C&D Processing

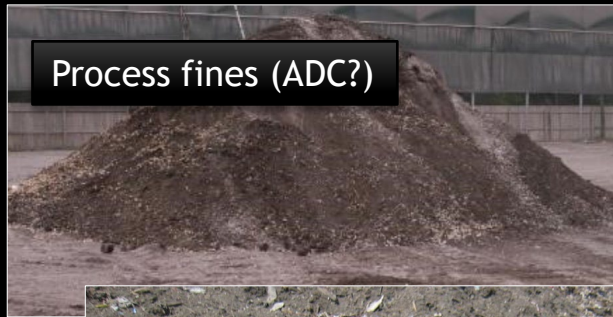
Drywall positive picked from tip floor



Drywall cannot be removed
efficiently from sort lines

Handling with grapples, Pre-shredding and
screening reduces drywall to small pieces

Where is Gypsum Waste Going?



Source Separation to Transfer Options





USA Gypsum End Markets

- ▶ Agriculture & Misc.
- ▶ Closed Loop
- ▶ Portland Cement

USA Gypsum

- ▶ Proven
- ▶ Reliable
- ▶ 25 years

Terry Weaver
Denver, Pennsylvania
terry@usagypsum.com
717-335-0379

