

2013/2014 USGS Color Ortho Imagery Download Instructions

STEP 1. Open [OLIVER](#) (this link will open Oliver with the layers as shown below).

The screenshot displays the OLIVER (MassGIS's Online Mapping Tool) interface. The main map area shows a grid overlay on a satellite-style image of Massachusetts, with major cities like Boston, Worcester, and Springfield labeled. The interface includes a top toolbar with navigation and search tools, a search bar, and a 'Pick a town' dropdown. On the right side, there are two panels: 'Available Data Layers' and 'Active Data Layers'. The 'Available Data Layers' panel lists various data categories such as Tiled Layers, State Facilities, Census data, and Images. The 'Active Data Layers' panel shows three selected layers: 'USGS Color Orthos 2013/2014 30cm Index Labels', 'USGS Color Orthos 2013/2014 30cm Index', and 'Detailed Features'. Below these panels is a 'Legend' section. A yellow callout box with a red border is overlaid on the bottom left of the map area, containing the following text:

Note: The instructions in this document may be used to download other data from MassGIS, such as the 2015 LiDAR DEMs.

The bottom of the interface features a scale bar (0 to 10 km and 0 to 10 miles), a scale of 1:1,155,581, and coordinates (102,658.82m 958,335.43m). A 'Basemaps' dropdown menu is visible in the bottom right corner.

Next

STEP 2. Zoom to your area of interest using any of the following Oliver tools:



Enter an address

Choose a city/town from dropdown



Zoom In

Zoom Out

Pan

STEP 3. Select the image tiles you want to download

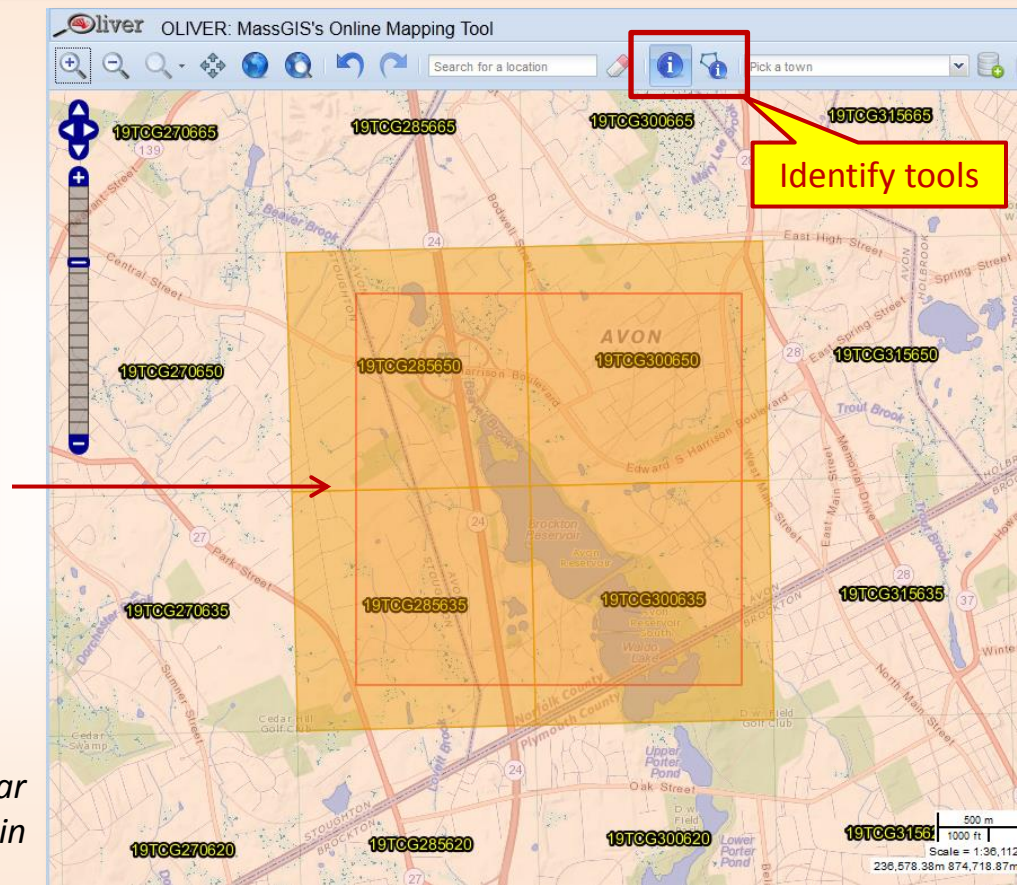
Use the Identify tools to Drag a box



or Draw a polygon



The Index tiles will become selected (medium orange color)



Note: Tile IDs will appear when you zoom in

Next

STEP 4. In the Identify results box, click on the USGS Color Orthos 2013 30cm Index layer.

Click here

A list of links will appear in the Feature details section below

STEP 5 – Option 1.

(Best for a few individual downloads)

Click on each link to download that image tile.

Click on each link to download zipped JPEG 2000 images

When the downloading completes, extract the contents of each .zip file and add the images to your GIS software....

STEP 5 – Option 2

(Best method to download many files),

Step 1. Save records to a file.

Click to save the records listed in the Feature details section to a file that may be opened in Excel.

Identify results

Select a data layer to highlight its features on the map and to view its feature details. You can view up to 500 features per data layer. To export data layers that are within or overlap the identify area, click [here](#) to launch the data export wizard.

Data layers

Data layer name	Feature(s) found?
USGS Color Orthos 2013/2014 30cm Index Labels	4 feature(s)
USGS Color Orthos 2013/2014 30cm Index	4 feature(s)

Feature details

Select all | Unselect all | Zoom-to all

TILENAME	DEL_AREA	URL	MOSAIC	IMG_YEAR
19TBG940770	BOS	http://wsqw.mass.gov/data/gispub/im...	8	2013
19TBG940755	BOS	http://wsqw.mass.gov/data/gispub/im...	8	2013
19TBG955755	BOS	http://wsqw.mass.gov/data/gispub/im...	8	2013
19TBG955770	BOS	http://wsqw.mass.gov/data/gispub/im...	8	2013

Save all records as... | Save selected records as...

Excel 2007 (.xlsx)
Excel 97-2003 (.xls)
CSV (.csv)

Note: You can click on individual lines in the Feature details list, holding the Shift and/or Ctrl keys to select a subset of the results. Then click 'Save selected records as...'

Next

STEP 5 – Option 2, Step 2.

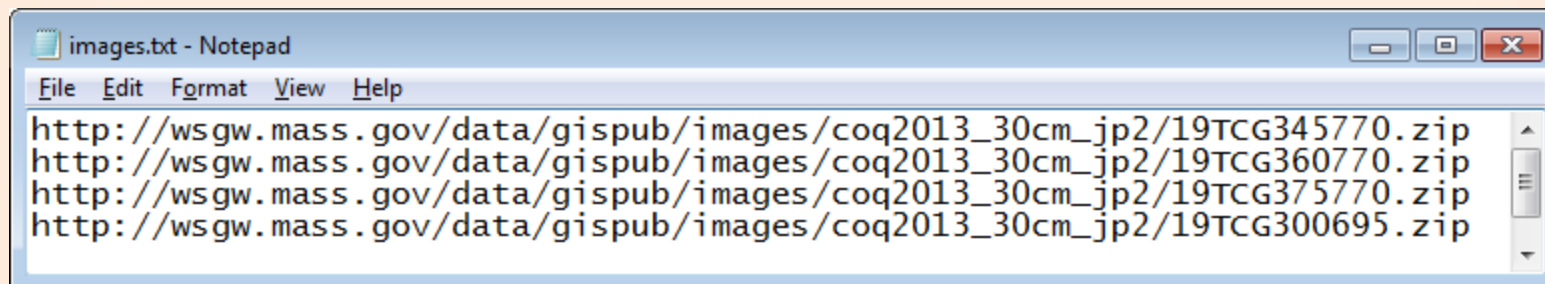
Open the saved file in Excel or another spreadsheet program and **select and copy** URLs

	A	B	C	D
1	FID	TILENAME	DEL_AREA	URL
2	GISDATA.COQ2013INDEX_POLY.3683	19TCG345770	BOS	http://wsgw.mass.gov/data/gispub/images/coq2013_30cm_jp2/19TCG345770.zip
3	GISDATA.COQ2013INDEX_POLY.3684	19TCG360770	BOS	http://wsgw.mass.gov/data/gispub/images/coq2013_30cm_jp2/19TCG360770.zip
4	GISDATA.COQ2013INDEX_POLY.3685	19TCG375770	BOS	http://wsgw.mass.gov/data/gispub/images/coq2013_30cm_jp2/19TCG375770.zip
5	GISDATA.COQ2013INDEX_POLY.4300	19TCG300695	BOS	http://wsgw.mass.gov/data/gispub/images/coq2013_30cm_jp2/19TCG300695.zip

Select only the cells with the links (URLs)
to the zipped images, then Copy them

STEP 5 – Option 2, Step 3.

Open Notepad or other text editor and **paste** into it the copied URLs, then **save** the text file



```
images.txt - Notepad
File Edit Format View Help
http://wsgw.mass.gov/data/gispub/images/coq2013_30cm_jp2/19TCG345770.zip
http://wsgw.mass.gov/data/gispub/images/coq2013_30cm_jp2/19TCG360770.zip
http://wsgw.mass.gov/data/gispub/images/coq2013_30cm_jp2/19TCG375770.zip
http://wsgw.mass.gov/data/gispub/images/coq2013_30cm_jp2/19TCG300695.zip
```


STEP 5 – Option 2, Step 4.

Download and install WinWGet, a free program to download multiple files

Download the free software at:

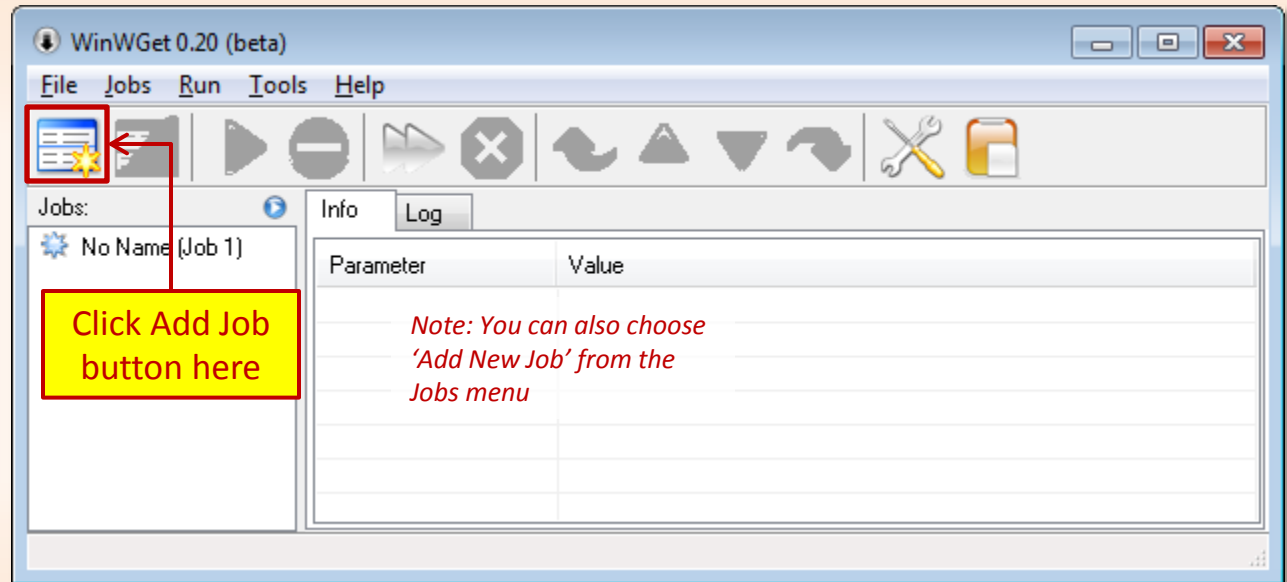
http://prdownloads.sourceforge.net/winwget/WinWget_0.20beta_setup.exe?download.

Visit <http://winwget.sourceforge.net/download.html> for details.

STEP 5 – Option 2, Step 5.

Open WinWGet and **Add** a new job

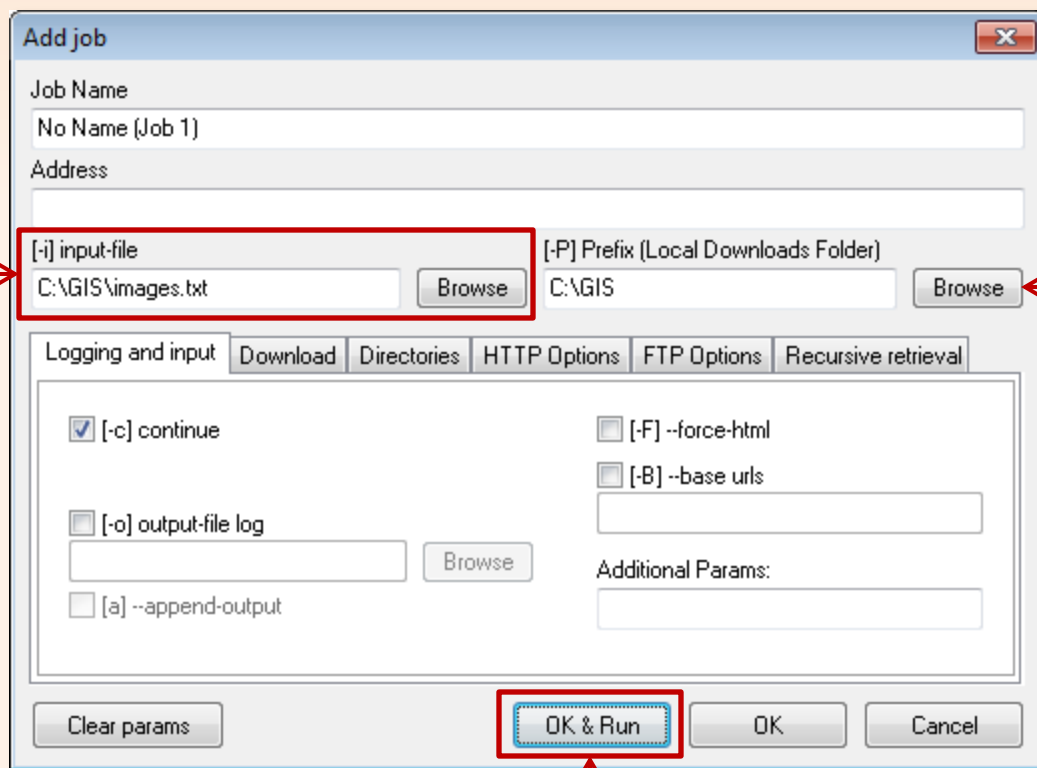
Once installed,
open WinWGet
and click the
Add Job button



STEP 5 – Option 2, Step 6.

Enter job parameters and **Run** job

1. Browse to the text file with the links



The 'Add job' dialog box in WinWGet. It has a title bar with a close button. The 'Job Name' field contains 'No Name (Job 1)'. The 'Address' field is empty. Below it, the '[i] input-file' field contains 'C:\GIS\images.txt' and has a 'Browse' button next to it. To the right, the '[-P] Prefix (Local Downloads Folder)' field contains 'C:\GIS' and also has a 'Browse' button. Below these are tabs for 'Logging and input', 'Download', 'Directories', 'HTTP Options', 'FTP Options', and 'Recursive retrieval'. The 'Logging and input' tab is active, showing checkboxes for '[c] continue' (checked), '[-o] output-file log' (unchecked), and '[a] --append-output' (unchecked). There are also checkboxes for '[-F] --force-html' and '[-B] --base urls', both unchecked. An 'Additional Params:' field is at the bottom right. At the bottom of the dialog are buttons for 'Clear params', 'OK & Run' (highlighted with a red dashed box), 'OK', and 'Cancel'.

2. Choose a local folder in which to store the images

Note: This example uses the defaults for all other settings in this and other tabs. They may be changed if you wish – refer to the WinWGet documentation.

3. Run the job

Once the zipped images are downloaded, extract the contents of each .zip file and add the images to your GIS software....

2013/2014 USGS Color Ortho Imagery metadata page:
<http://www.mass.gov/itd/colororthos2013>