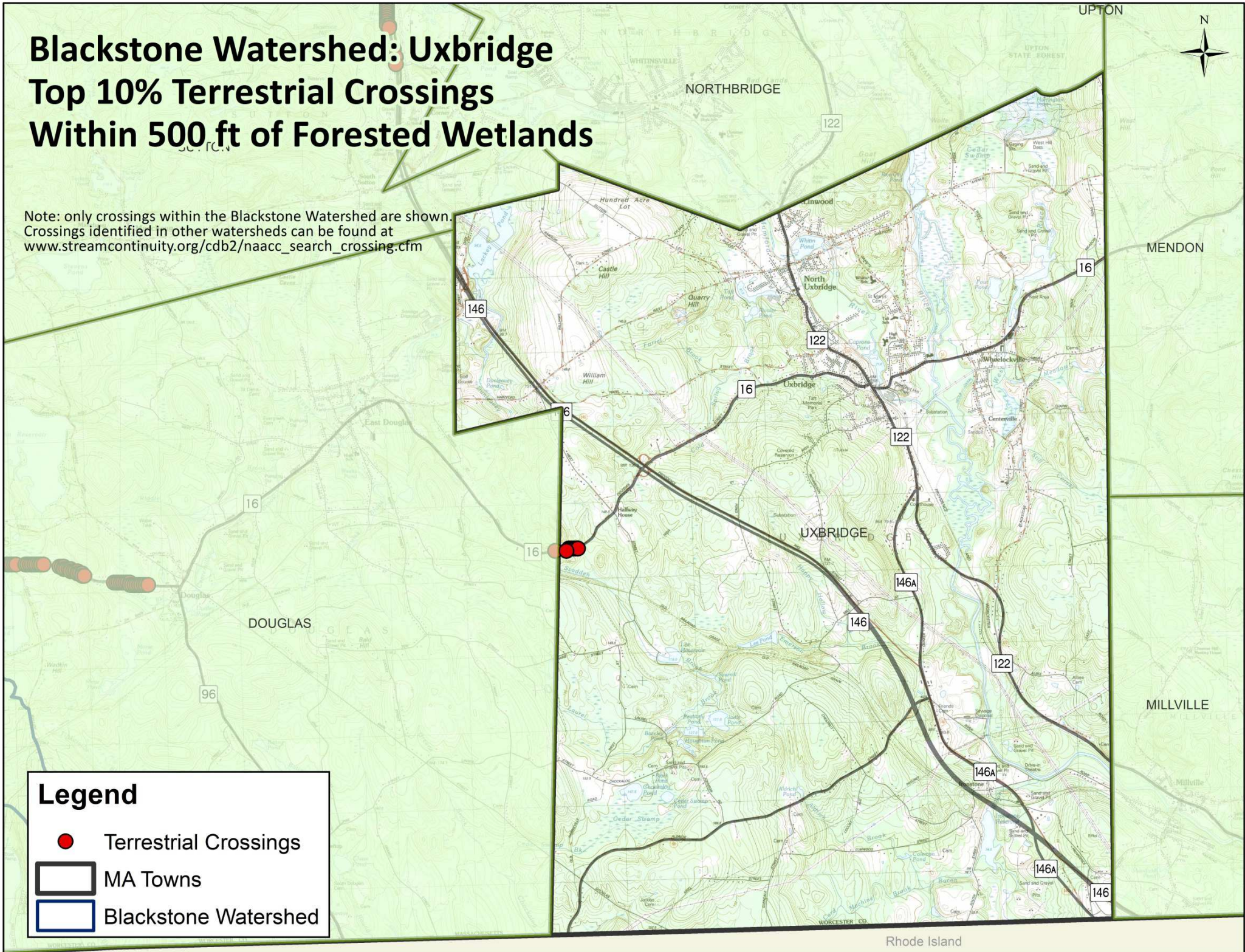


# Blackstone Watershed: Uxbridge Top 10% Terrestrial Crossings Within 500 ft of Forested Wetlands

Note: only crossings within the Blackstone Watershed are shown.  
Crossings identified in other watersheds can be found at  
[www.streamcontinuity.org/cdb2/naacc\\_search\\_crossing.cfm](http://www.streamcontinuity.org/cdb2/naacc_search_crossing.cfm)



**Legend**

- Terrestrial Crossings
- ▭ MA Towns
- ▭ Blackstone Watershed