



Massachusetts
Division of Marine Fisheries
SHELLFISH SANITATION AND MANAGEMENT

Growing Area Code: V31

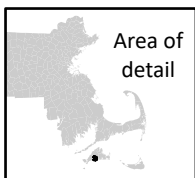
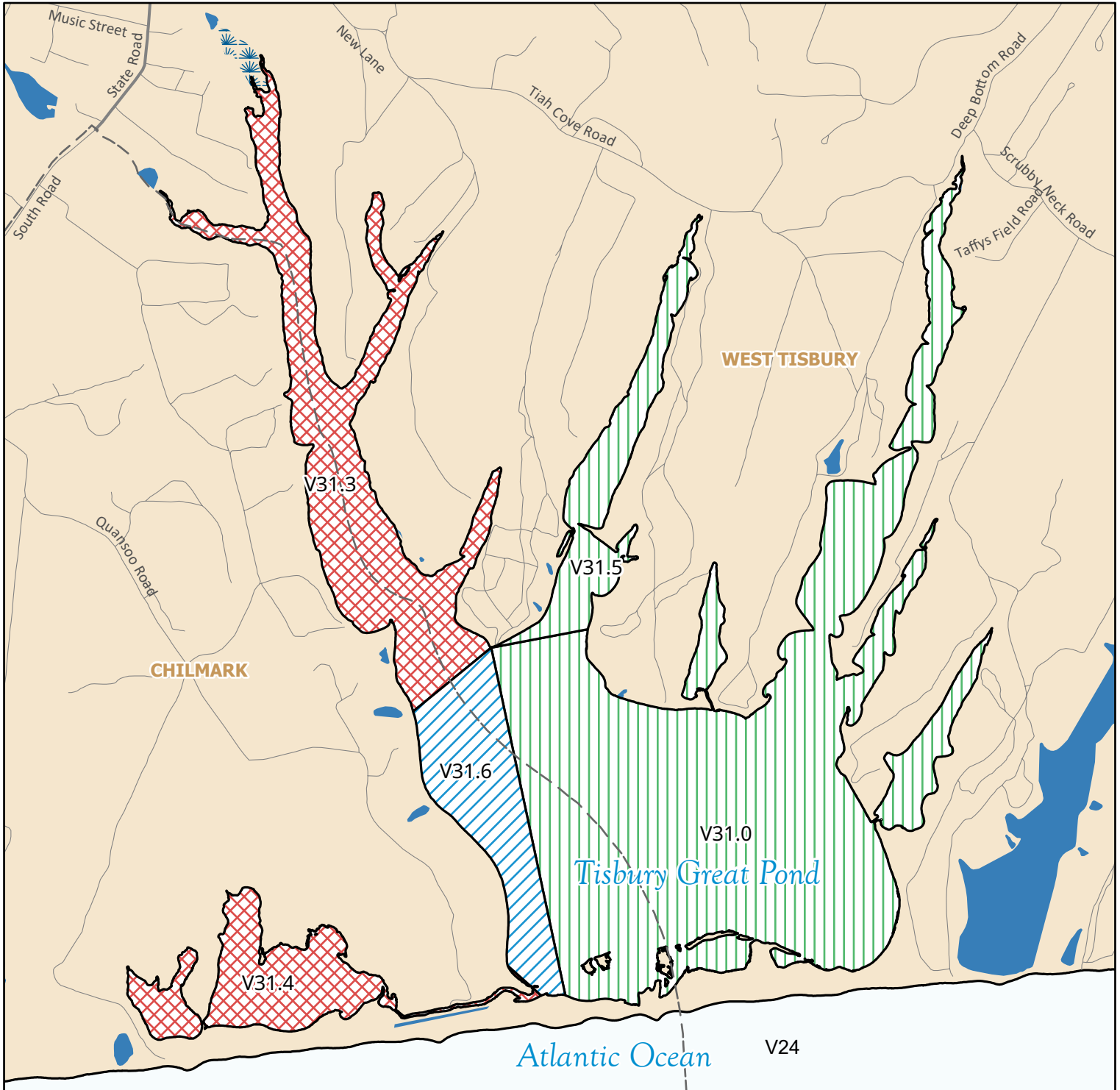
Area Name: Tisbury Great Pond

Area Town(s): Chilmark, West Tisbury

Shellfish Area Classification

Approved	Conditionally Restricted
Conditionally Approved	Prohibited
Restricted	

Produced: 12/3/2025



This map depicts the Marine Fisheries' sanitary classification of shellfish growing waters in accordance with the National Shellfish Sanitation Program. It does not indicate the current status, either "open" or "closed" to harvesting due to shellfish management or public health reasons. Always confirm the status with local authorities and/or Marine Fisheries. Information on this map may be out-dated or otherwise incorrect, and should not be relied upon for legal purposes.

Marsh/Wetland Saltmarsh Pond/Lake/Reservoir
 Town Boundaries Stream/Ditch/Canal

0 0.5 1
NORTH Miles