



# Intersection Improvement Project VFW Parkway at South Street and Church Street

*Brookline, MA*

*Presented by*

**Tim McIntosh, P.E. - VHB**

May 20, 2021





# Meeting Logistics

- You will have the opportunity to submit comments over the course of the next two weeks at:
  - DCR Public Comments <https://www.mass.gov/forms/dcr-public-comments>
- Two ways to ask questions during the meeting
  - Raise your hand Zoom function
  - Use Q&A feature
- *Please note that this public information meeting will be recorded; the recording will be a public record*



# Commonwealth of Massachusetts

Governor

**Charles D. Baker**

Lieutenant Governor

**Karyn E. Polito**

Energy and Environmental Secretary

**Kathleen A. Theoharides**

Department of Conservation and Recreation Commissioner

**Jim Montgomery**

# Project Design Team

- Jeffrey R. Parenti, PE, PTOE, PTP, ENV SP
  - DCR – Deputy Chief Engineer, Division of Planning and Engineering
- Val Soroka, PE
  - DCR – Project Manager
- Dan Cushing
  - DCR – Director of Public Engagement
- Kelly Govoni
  - DCR - Deputy Director of Government Affairs
- VHB Design Consultant
  - Tim McIntosh, P.E. - Project Manager
  - Val Lenhardt, P.E., IMSA III, - Traffic Signal Design
  - Rob Cahoon, P.E. – Intersection Design

# DCR Mission

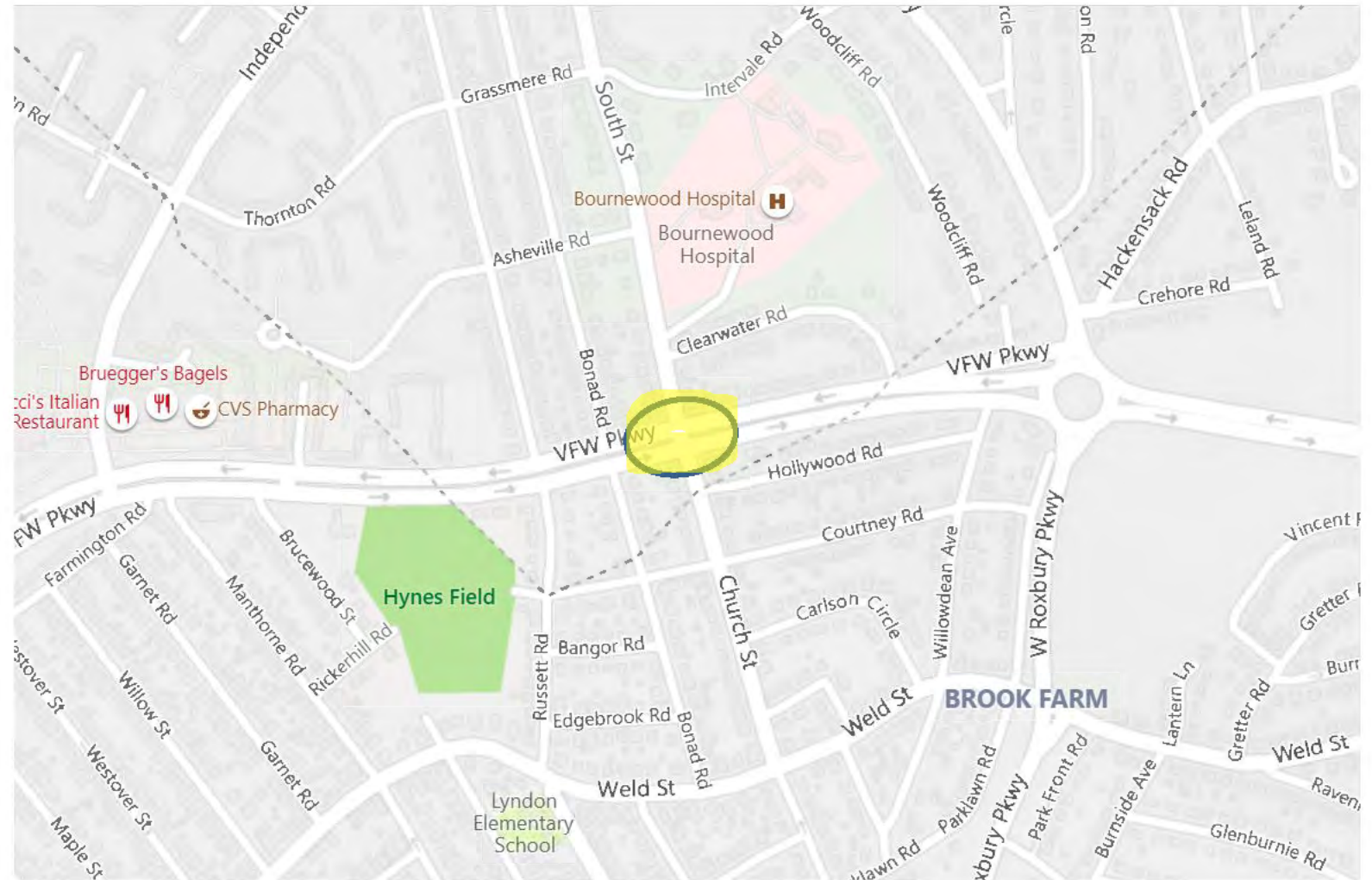
*To protect,  
promote, and  
enhance our  
Commonwealth of  
natural, cultural,  
and recreational  
resources for the  
well-being of all.*





# Meeting Overview

- ❑ Project goals and objectives
- ❑ Existing conditions and safety concerns
- ❑ Proposed alternatives
- ❑ Project Status
- ❑ Next steps



# Project Goals and Objectives

- Address intersection safety issues and concerns
- Create a balanced design
- Solicit public input on a "preferred" concept





# Existing Conditions

- Historic VFW Parkway
- Mature trees
- Pavement is in good condition





# Existing Conditions

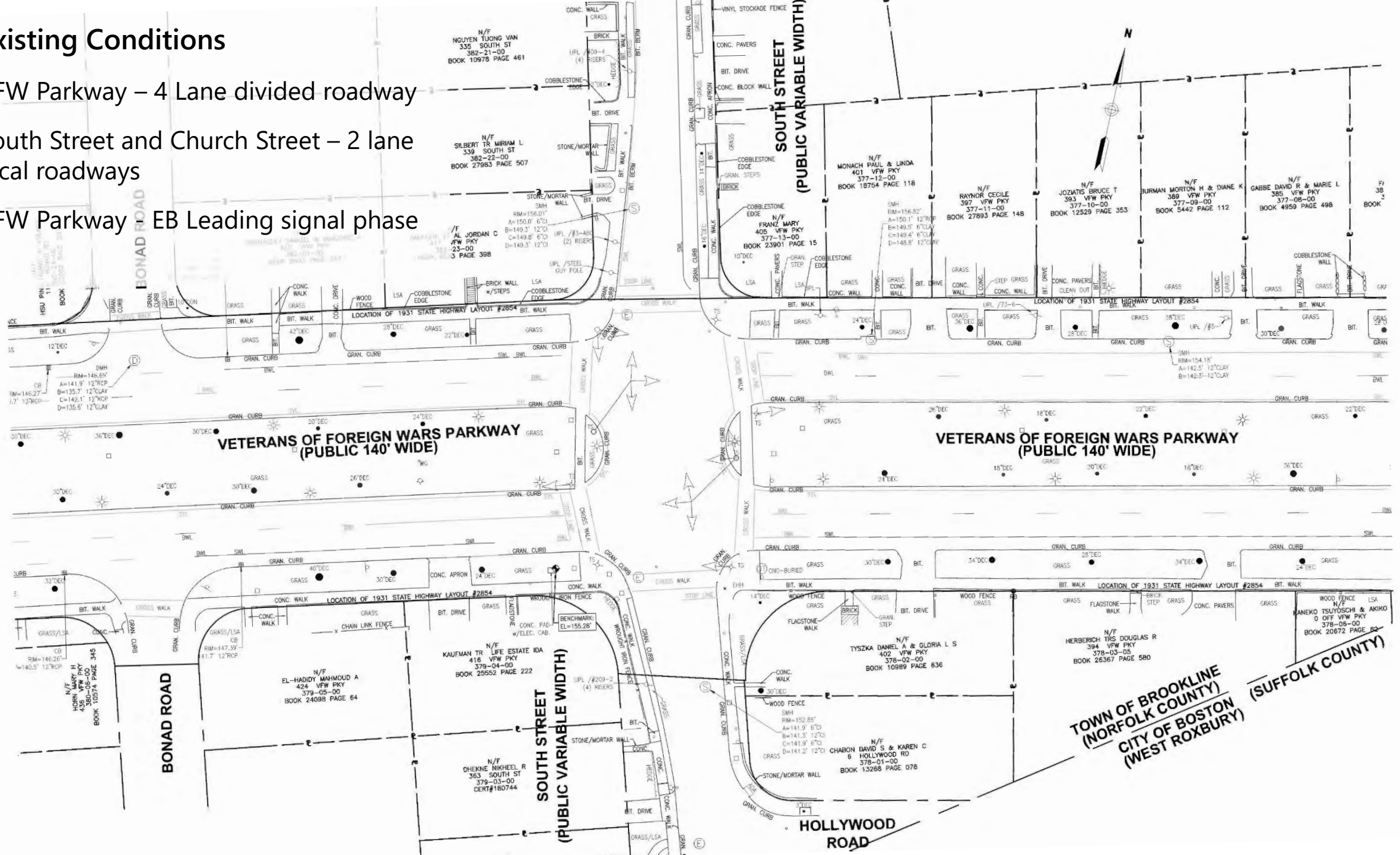
- VFW Parkway – 2 lanes eastbound/westbound
- South Street and Church Street – 1 lane northbound/ southbound
- Bicycle lanes on VFW Parkway
- Outdated traffic signal system
- Non-compliant pedestrian ramps





# Existing Conditions

- VFW Parkway – 4 Lane divided roadway
- South Street and Church Street – 2 lane local roadways
- VFW Parkway – EB Leading signal phase



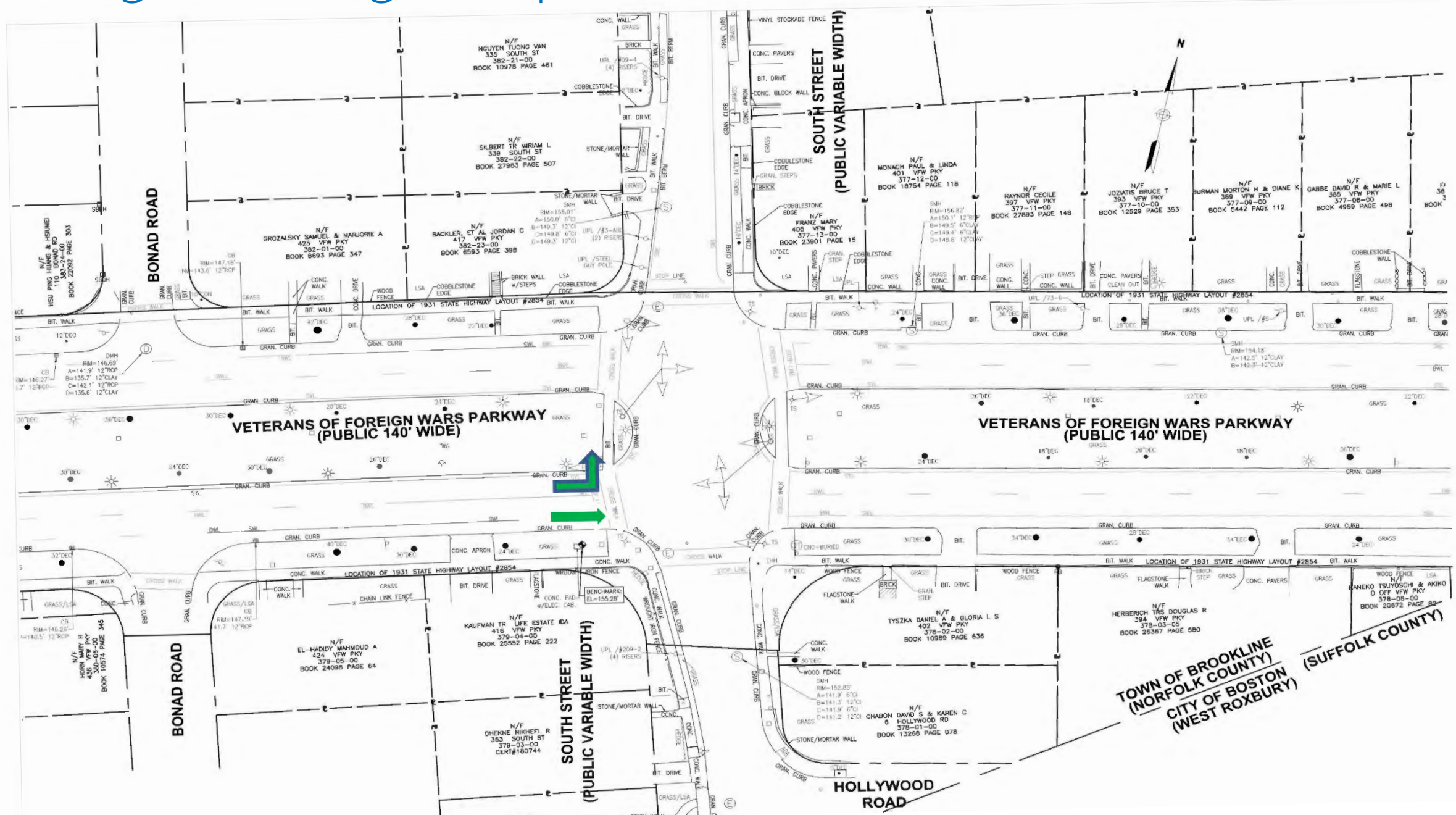


# Existing Safety Concerns – Accident Data 2015 to 2017

- 22 reported crashes
  - Average of about 7 per year
  - 14 were angle type
  - 1 fatality (April 2017, AM)
- Slightly over the District 6 Crash Rate ( $> 0.71$ )
- Slightly under Statewide Crash Rate ( $< 0.78$ )



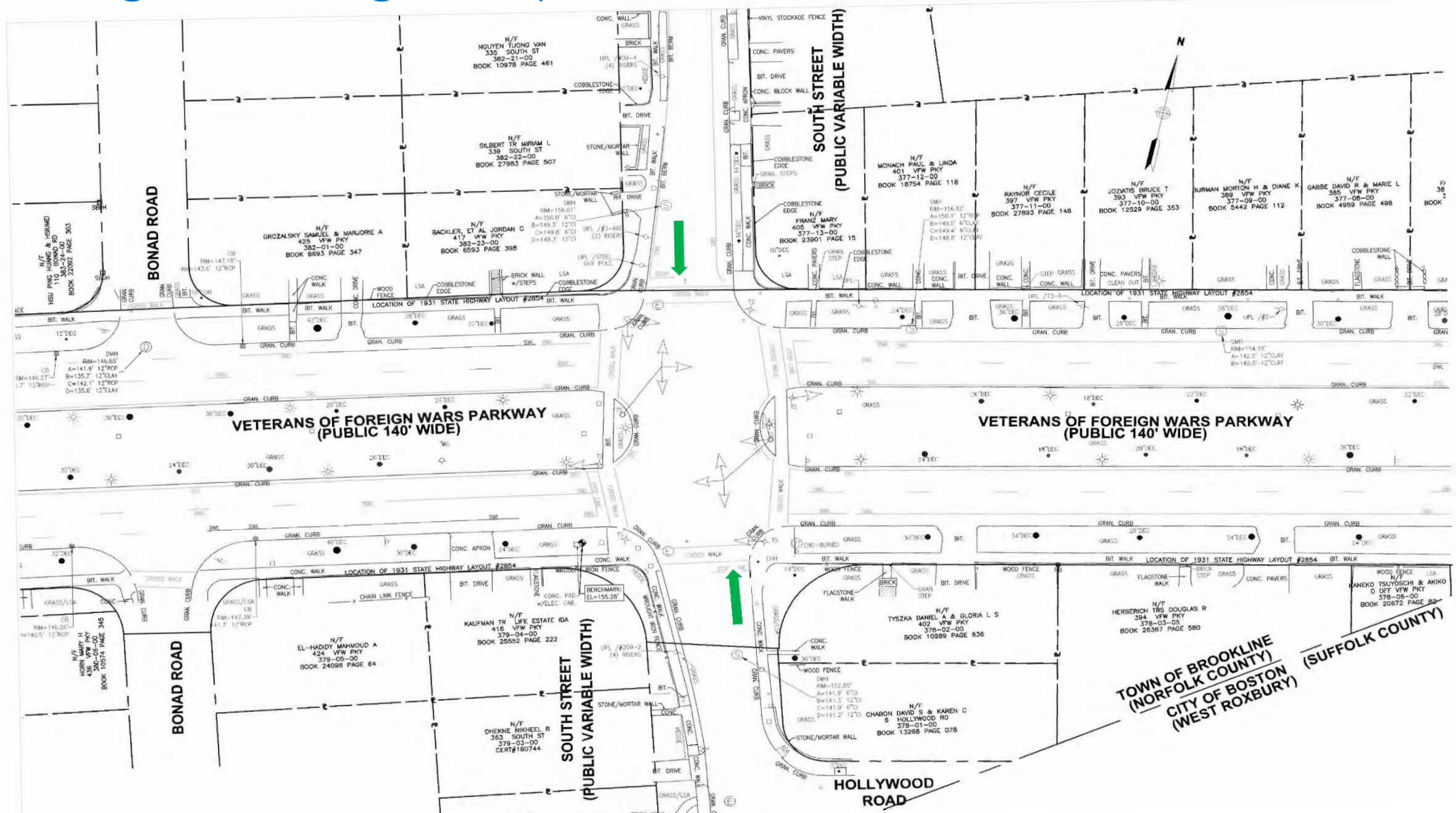
## Existing Traffic Signal Operations – EB Lead





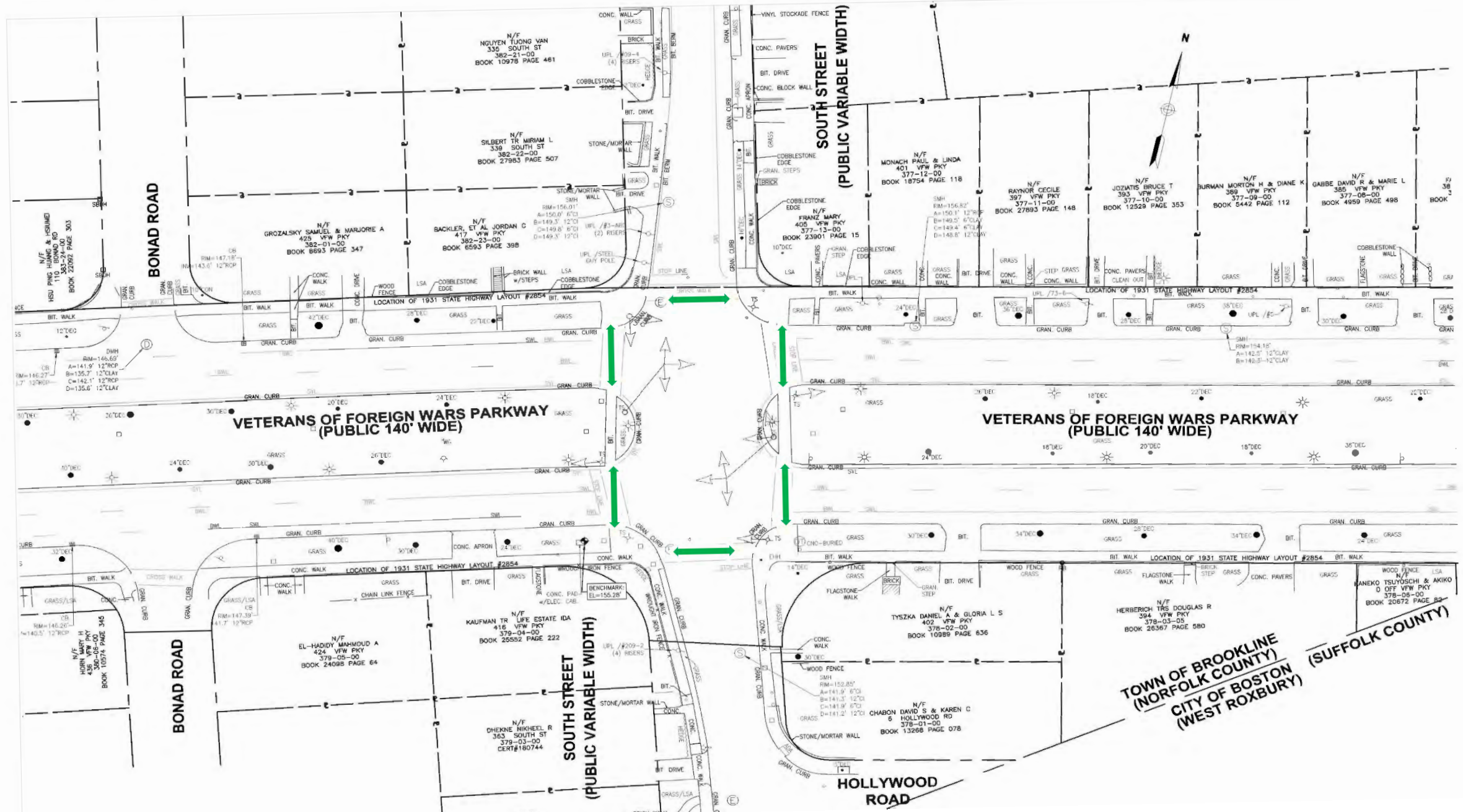
This is a detailed plat map of a section of Brookline, Massachusetts, showing property boundaries, owner names, and street layouts. The map includes Bonad Road, Veterans of Foreign Wars Parkway, South Street, and Hollywood Road. It features numerous property lots with owner names and addresses, such as "N/F GROZALSKY SAMUEL & MARJORIE A" and "N/F BACKLER, ET AL JORDAN C". The map also shows the "LOCATION OF 1931 STATE HIGHWAY LAYOUT #2854" and various street widths like "PUBLIC 140' WIDE" and "PUBLIC VARIABLE WIDTH". A north arrow is present in the upper right corner.

# Existing Traffic Signal Operations – NB/SB





# Existing Traffic Signal Operations – Pedestrians





# Proposed Alternatives





# Traffic Signal Improvements – All Alternatives

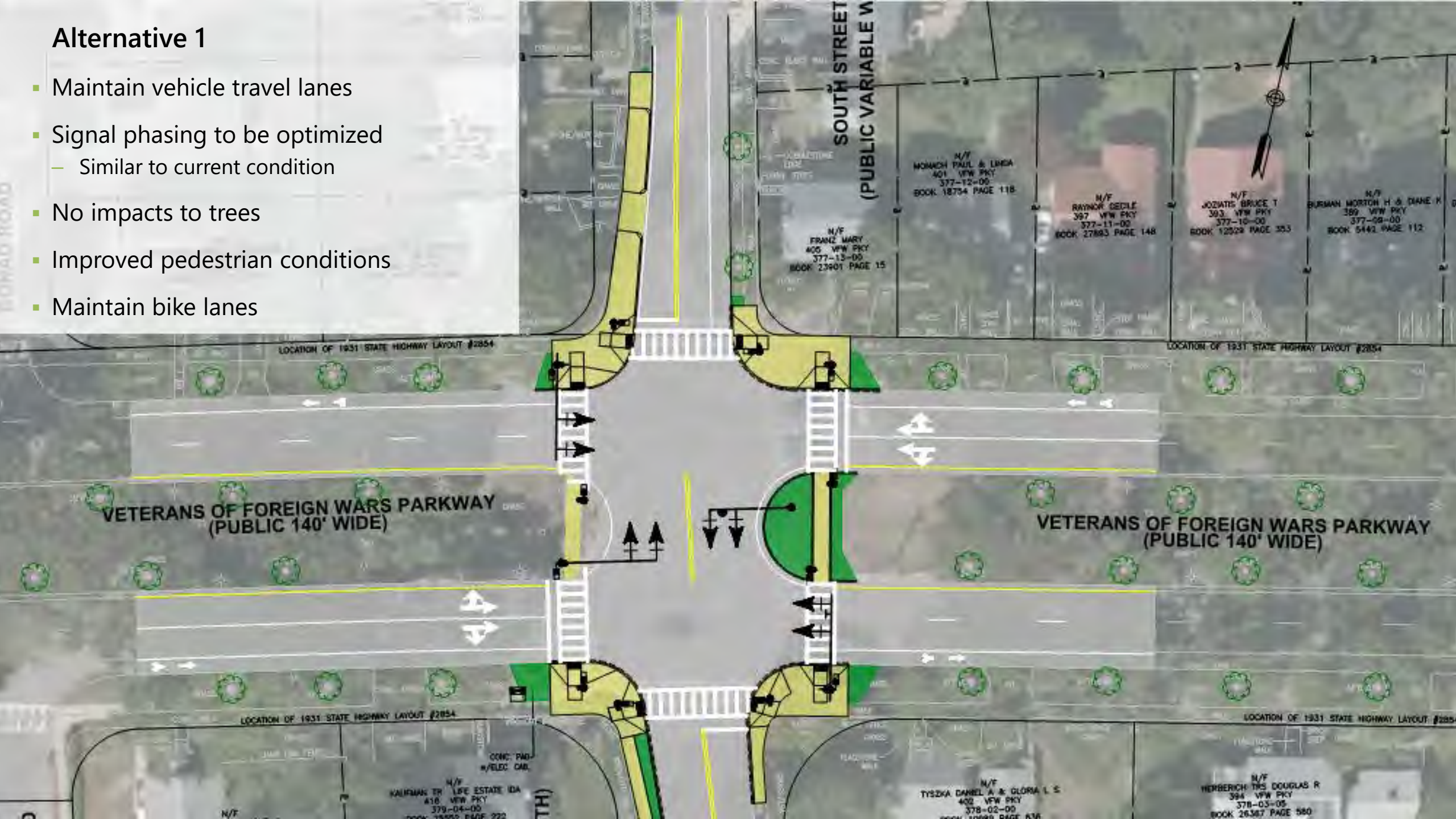
- New traffic signal controller
- New overhead mast arms
- New pedestrian signal heads with count down timers
- New pedestrian ramps





## Alternative 1

- Maintain vehicle travel lanes
- Signal phasing to be optimized
  - Similar to current condition
- No impacts to trees
- Improved pedestrian conditions
- Maintain bike lanes





## Alternative 2

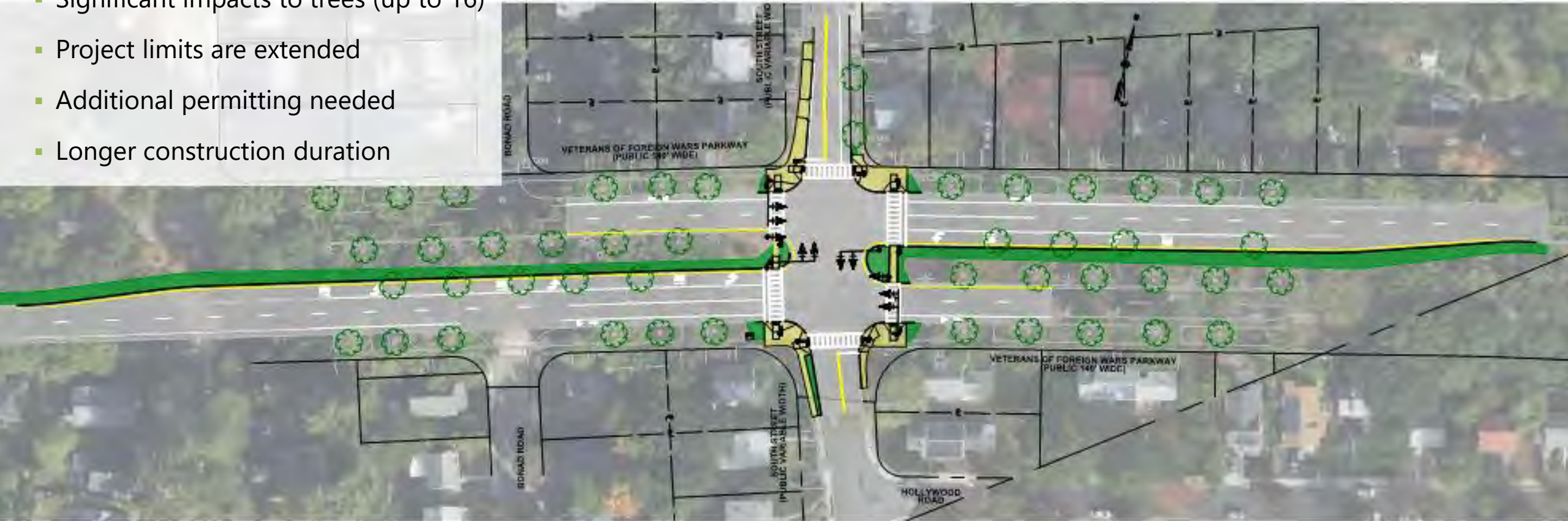
- Maintain vehicle travel lanes
- Lead / Lag left turn signal phases
- New left turn lanes within median
- Improve pedestrian conditions
- Maintain bike lanes





## Alternative 2 – Larger View

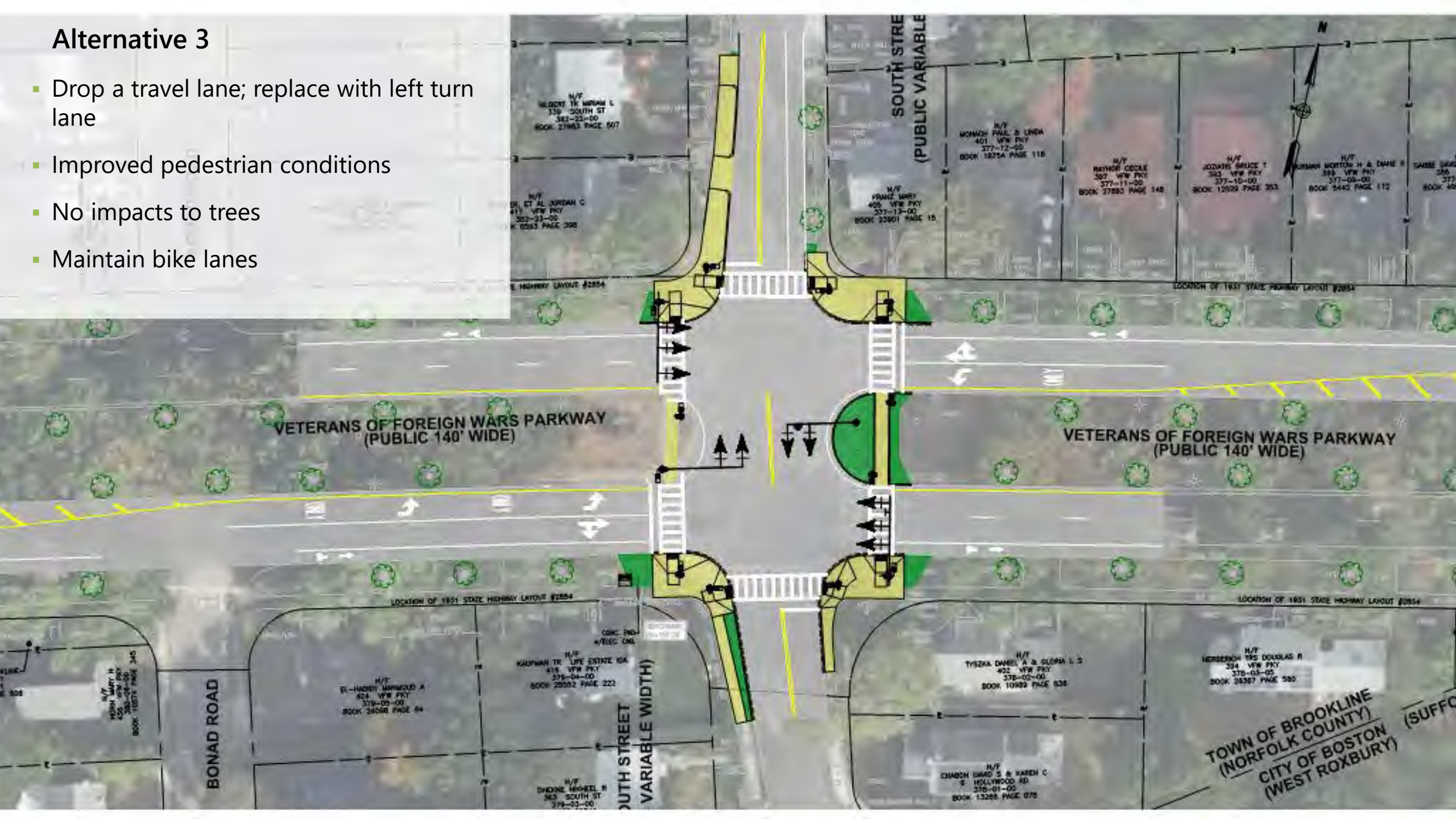
- Left turn lanes in median
  - Vehicle Storage and Deceleration
- Significant impacts to trees (up to 16)
- Project limits are extended
- Additional permitting needed
- Longer construction duration





### Alternative 3

- Drop a travel lane; replace with left turn lane
- Improved pedestrian conditions
- No impacts to trees
- Maintain bike lanes





## Alternative 3

- Increases overall intersection delay in the Morning, Midday and Evening Peaks
- Excessive queuing due to lane drop
- Morning Peak
  - Westbound 95% Que – approx. 885 feet
  - Eastbound 95% Que – approx. 1235 feet





# Design Alternatives - Summary

	Alternative 1	Alternative 2	Alternative 3
New traffic signal system	✓	✓	✓
Improve pedestrian access	✓	✓	✓
Improve safety / Reduce conflicts	✓ -	✓ +	✓
Provide exclusive left turn lanes (VFW Parkway)		✓	✓
Improve Traffic Operations	✓		
Preserve Trees	✓		✓
Maintain bike lanes	✓	✓	✓

# Project Status

- Completed field survey and traffic data collection
- Prepared draft traffic memorandum
- Currently at preliminary design stage for 3 alternatives
- Public Meeting # 1 to discuss alternatives





# Next Steps

- Comments due in 2 weeks  
(June 3<sup>rd</sup>)
- Schedule dependent on  
Alternative that moves forward
- Final Design
- Bidding
- Construction



# Additional Information

- **Recording and tonight's slide deck will be available at:**

- [www.mass.gov/dcr/past-public-meetings](http://www.mass.gov/dcr/past-public-meetings)

- **If you have comments or suggestions on this project:**

- *Submit online:* [www.mass.gov/dcr/public-comment](http://www.mass.gov/dcr/public-comment)
- *Deadline: Thursday, June 3<sup>rd</sup>, 2021*

*Please note: the contents of comments submitted to DCR, including your name, town and zip code, will be posted on DCR's website. Additional contact information provided, notably email address, will only be used for outreach on future updates to the subject project or property.*

- **If you wish to subscribe to a DCR general information or project-related listserv:** contact DCR's Office of Community Relations via email at [mass.parks@mass.gov](mailto:mass.parks@mass.gov)





## QUESTIONS AND DISCUSSION





Existing Conditions

