

Oliver Selector Data Download Instructions

STEP 1. Open the OLIVER Interactive Map The Download box/link will open Oliver with the selector index layers showing, similar to below (in this example we are using the 2013/14 USGS orthos, your index name will be for your data.)

The screenshot displays the OLIVER: MassGIS's Online Mapping Tool interface. The main map area shows a grid overlay over a satellite-style map of Massachusetts, with major cities like Boston, Worcester, and Springfield labeled. The interface includes a search bar at the top, a toolbar with navigation and tool icons, and a dropdown menu for selecting a town. On the right side, there are two panels: 'Available Data Layers' and 'Active Data Layers'. The 'Available Data Layers' panel lists various data categories such as Tiled Layers, State Facilities, Census data, and Index layers. The 'Active Data Layers' panel shows three selected layers: 'USGS Color Orthos 2013/2014 30cm Index Label', 'USGS Color Orthos 2013/2014 30cm Index', and 'Detailed Features'. Below these panels is a legend section with a red square corresponding to the 'USGS Color Orthos 2013/2014 30cm Index' layer. At the bottom right, there is a scale bar and coordinate information.

OLIVER: MassGIS's Online Mapping Tool

OLIVER Updates

Search for a location

Pick a town

Available Data Layers

Search data layers

- Tiled Layers
- State Facilities
- Census 1990
- Census 2000
- Census 2010
- Coastal and Marine Features
- Conservation / Recreation
- Cultural Resources
- Environmental Monitoring (testing/monitoring sites)
- Images
- Index (grids/tiling schemes for certain layers)
- Infrastructure
- Physical Resources
- Political / Administrative Boundaries

Active Data Layers

Check all | Uncheck all | Remove all

- USGS Color Orthos 2013/2014 30cm Index Label
- USGS Color Orthos 2013/2014 30cm Index
- Detailed Features

Legend

USGS Color Orthos 2013/2014 30cm Index Labels

USGS Color Orthos 2013/2014 30cm Index

Scale = 1:1,155,581
102,658.82m 958,335.43m

Basemaps

Next

STEP 2. Zoom to your area of interest using any of the following Oliver tools:



Enter an address

Choose a city/town from dropdown



Zoom In

Zoom Out

Pan

STEP 3. Select the files you want to download

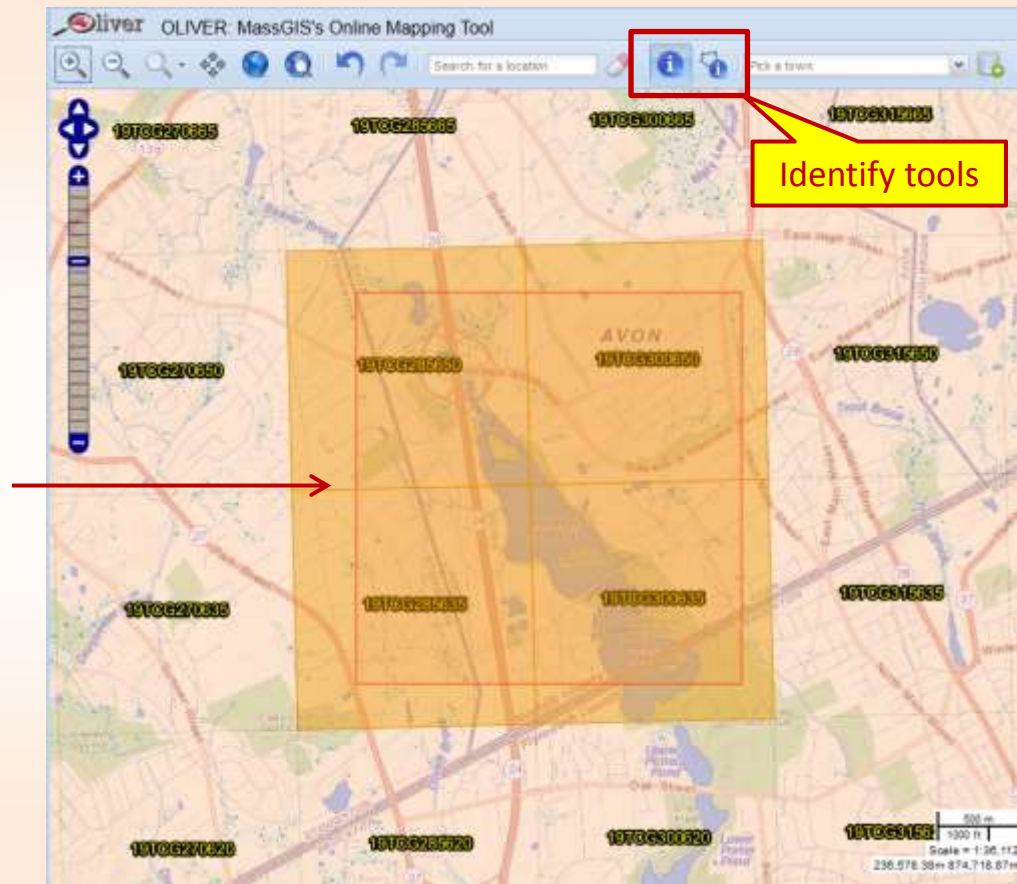
Use the Identify tools to Drag a box



or Draw a polygon



The Index tiles will become selected (medium orange color)



Next

STEP 4. In the Identify results box, click on the *Named Dataset* Index layer.

Click here

A list of links will appear in the Feature details section below

STEP 5 – Option 1.

(Best for a few individual downloads)

Click on each link to download that file.

Click on each link to download zipped images (or shapefiles)

When the downloading completes, extract the contents of each .zip file and add the data to your GIS software....

STEP 5 – Option 2

(Best method to download many files),

Step 1. Save records to a file.


Click to save the records listed in the Feature details section to a file that may be opened in Excel.

Choose one of these formats


Excel 2007 (.xlsx)
Excel 97-2003 (.xls)
CSV (.csv)

Note: You can click on individual lines in the Feature details list, holding the Shift and/or Ctrl keys to select a subset of the results. Then click 'Save selected records as...'

Identify results

Select a data layer to highlight its features on the map and to view its feature details. You can view up to 500 features per data layer. To export data layers that are within or overlap the identify area, click [here](#) to launch the data export wizard .

Data layers

Data layer name	Feature(s) found?
 USGS Color Orthos 2013/2014 30cm Index Labels	4 feature(s)
 USGS Color Orthos 2013/2014 30cm Index	4 feature(s)

Feature details

Select all | Unselect all | Zoom-to all

TILENAME	DEL_AREA	URL	MOSAIC	IMG_YEAR
19TBG940770	BOS	http://wsqw.mass.gov/data/gispub/im...	8	2013
19TBG940755	BOS	http://wsqw.mass.gov/data/gispub/im...	8	2013
19TBG955755	BOS	http://wsqw.mass.gov/data/gispub/im...	8	2013
19TBG955770	BOS	http://wsqw.mass.gov/data/gispub/im...	8	2013

Save all records as... | Save selected records as...

Excel 2007 (.xlsx)
Excel 97-2003 (.xls)
CSV (.csv)

Next

STEP 5 – Option 2, Step 2.

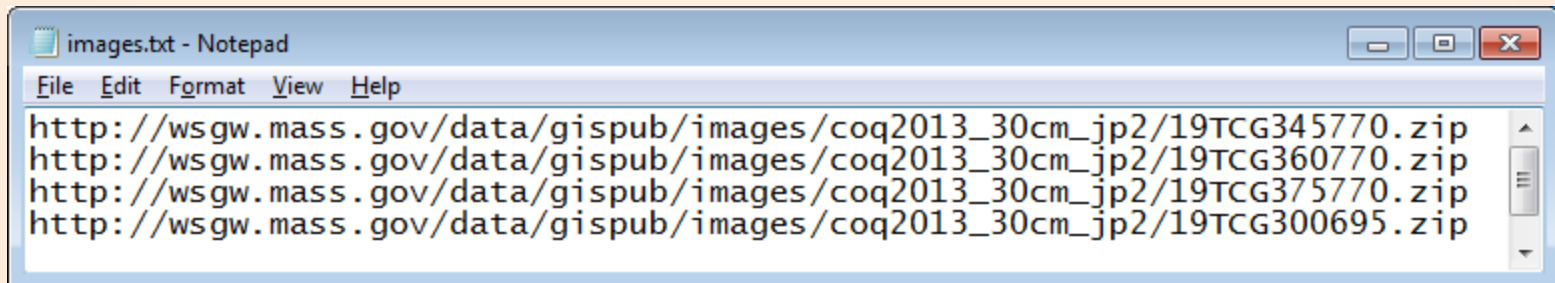
Open the saved file in Excel or another spreadsheet program and **select and copy** URLs

	A	B	C	D
1	FID	TILENAME	DEL_AREA	URL
2	GISDATA.COQ2013INDEX_POLY.3683	19TCG345770	BOS	http://wsgw.mass.gov/data/gispub/images/coq2013_30cm_jp2/19TCG345770.zip
3	GISDATA.COQ2013INDEX_POLY.3684	19TCG360770	BOS	http://wsgw.mass.gov/data/gispub/images/coq2013_30cm_jp2/19TCG360770.zip
4	GISDATA.COQ2013INDEX_POLY.3685	19TCG375770	BOS	http://wsgw.mass.gov/data/gispub/images/coq2013_30cm_jp2/19TCG375770.zip
5	GISDATA.COQ2013INDEX_POLY.4300	19TCG300695	BOS	http://wsgw.mass.gov/data/gispub/images/coq2013_30cm_jp2/19TCG300695.zip

Select only the cells with the links (URLs)
to the zipped images, then Copy them

STEP 5 – Option 2, Step 3.

Open Notepad or other text editor and **paste** into it the copied URLs, then **save** the text file



```
images.txt - Notepad
File Edit Format View Help
http://wsgw.mass.gov/data/gispub/images/coq2013_30cm_jp2/19TCG345770.zip
http://wsgw.mass.gov/data/gispub/images/coq2013_30cm_jp2/19TCG360770.zip
http://wsgw.mass.gov/data/gispub/images/coq2013_30cm_jp2/19TCG375770.zip
http://wsgw.mass.gov/data/gispub/images/coq2013_30cm_jp2/19TCG300695.zip
```

STEP 5 – Option 2, Step 4.

Download and install WinWGet, a free program to download multiple files

Download the free software at:

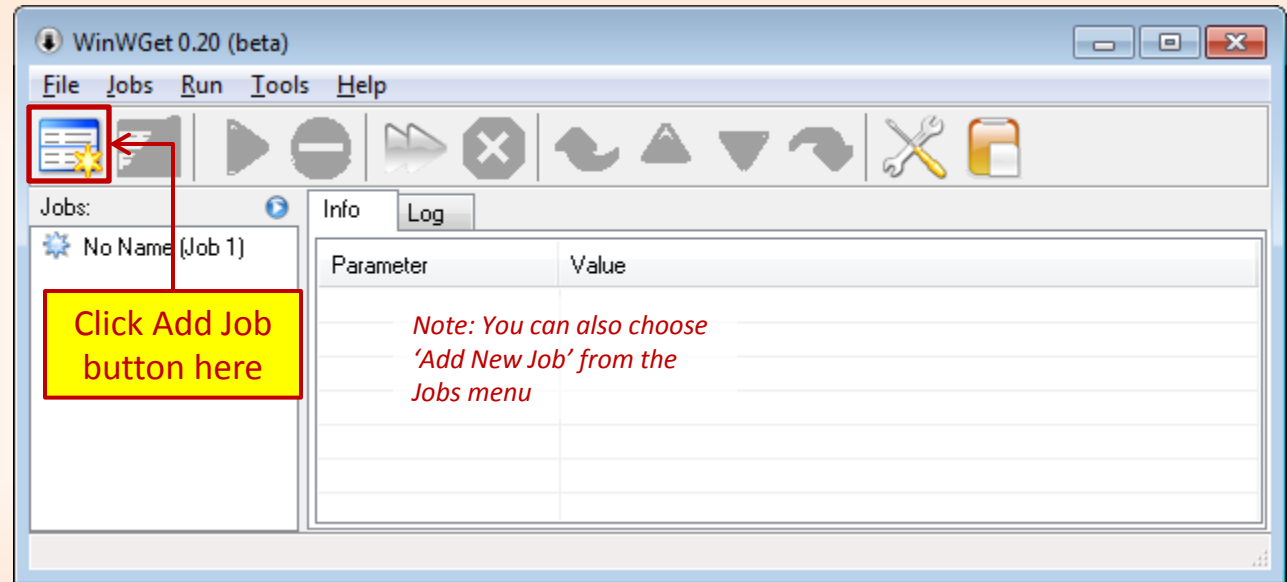
http://prdownloads.sourceforge.net/winwget/WinWget_0.20beta_setup.exe?download.

Visit <http://winwget.sourceforge.net/download.html> for details.

STEP 5 – Option 2, Step 5.

Open WinWGet and Add a new job

Once installed, open WinWGet and click the Add Job button



STEP 5 – Option 2, Step 6.

Enter job parameters and **Run** job

1. Browse to the text file with the links

Job Name
No Name (Job 1)

Address

[-i] input-file
C:\GIS\images.txt Browse

[-P] Prefix (Local Downloads Folder)
C:\GIS Browse

Logging and input Download Directories HTTP Options FTP Options Recursive retrieval

[-c] continue [-F] --force-html

[-o] output-file log [-B] --base urls

[-a] --append-output

Additional Params:

Clear params OK & Run OK Cancel

2. Choose a local folder in which to store the images

Note: This example uses the defaults for all other settings in this and other tabs. They may be changed if you wish – refer to the WinWGet documentation.

3. Run the job

Once the zipped files are downloaded, extract the contents of each .zip file and add the data to your GIS software....