



# Design Public Hearing

## *Charlton-Oxford Route 20 Roadway Reconstruction Project*

[www.mass.gov/route-20-reconstruction-project-in-charlton-oxford](http://www.mass.gov/route-20-reconstruction-project-in-charlton-oxford)

Zoom | May 13, 2021 | 6:00pm

Project File No. 602659





# Public Meeting Notes and Procedures

## Notification of Recording

- This virtual public meeting will be recorded. The Massachusetts Department of Transportation may choose to retain and distribute the video, still images, audio, and/or chat transcript.
- By continuing attendance with this virtual public meeting, you are consenting to participate in a recorded event.
- All recordings and chat transcript will be considered a public record.
- If you are not comfortable being recorded, please turn off your camera, keep your microphone muted, and refrain from chatting in the transcript box. Else you may choose to excuse yourself from the meeting.

## Other Important Notes

- Please note that you will be automatically muted upon entering the meeting. The meeting will be open to questions and answers at the end of the presentation.
- Please state your name prior to asking a question or commenting.

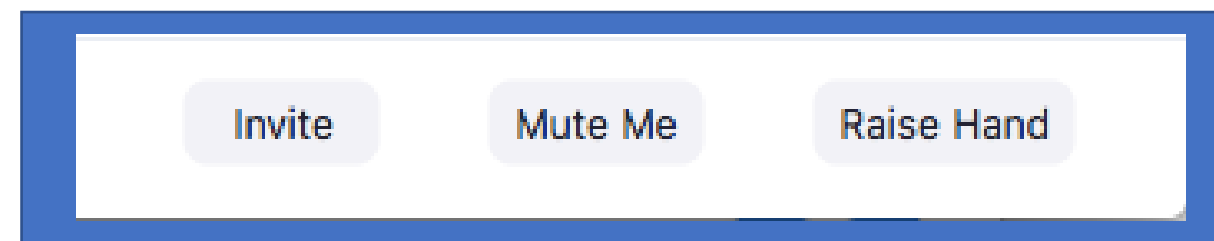
## IT Questions throughout this presentation

- Please email Makaela Niles – [makaela.niles@dot.state.ma.us](mailto:makaela.niles@dot.state.ma.us)

# Questions and Answers

## Instructions

- To comment, please click the “**Participants**” button at the bottom of your screen, then click the “**Raise Hand**” button (see below). Kindly wait for the moderator to recognize and call on you before speaking, you will be unmuted at this time.



- If you prefer to type your question in the Q&A box it will be answered in the order received and read out by the moderator to the project team.
- To ask a question via phone, dial \*9 and the moderator will call out the last 4-digits of your phone number and unmute your audio when it is your turn.

**Please share only one question or comment at a time, limited to 2 minutes, to allow others to participate.**





# Design Public Hearing

## *Charlton-Oxford Route 20 Roadway Reconstruction Project*

[www.mass.gov/route-20-reconstruction-project-in-charlton-oxford](http://www.mass.gov/route-20-reconstruction-project-in-charlton-oxford)

Zoom | May 13, 2021 | 6:00pm

Project File No. 602659





## Project Information

Please submit any questions or comments to the project email listed below:

- [MassDOTRte20Reconstruction@dot.state.ma.us](mailto:MassDOTRte20Reconstruction@dot.state.ma.us)

Design Public Hearing Comment Period is 10 business days after the hearing is posted to the MassDOT website listed below:

- [www.mass.gov/route-20-reconstruction-project-in-charlton-oxford](http://www.mass.gov/route-20-reconstruction-project-in-charlton-oxford)

Use the "Sign Up" form/link to obtain additional information on the project:

- [MassDOT/MBTA Project Information - Signup](#)





# Agenda

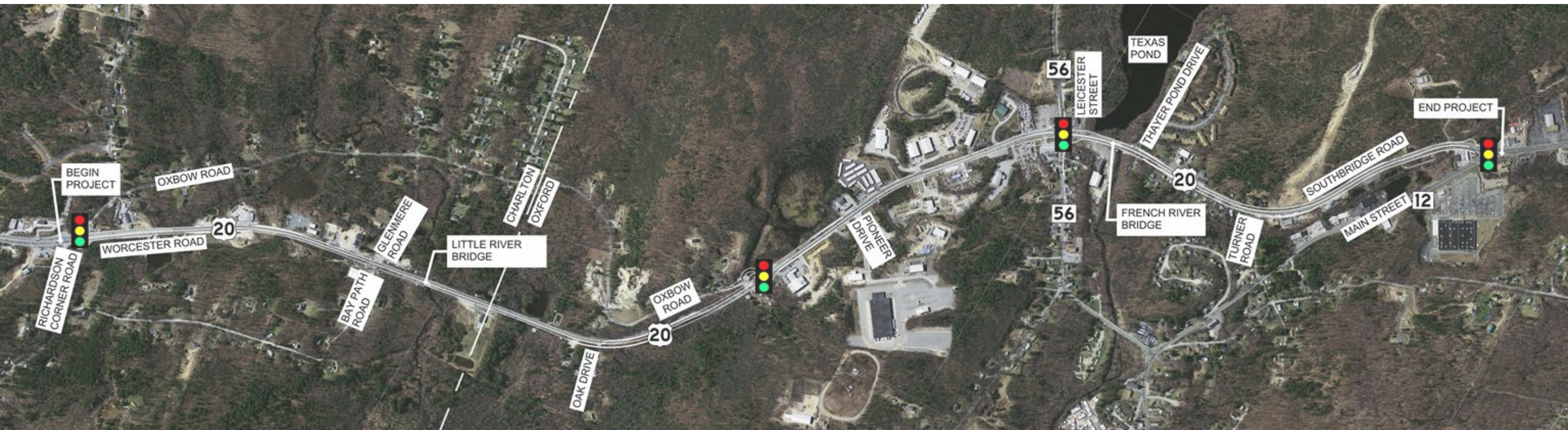
- Introductions
- Project Timeline
- Existing Conditions
- Project Overview
- Project Impacts
- Right-of-Way
- Construction Approach
- Next Steps
- Questions and Answers





# Charlton-Oxford Route 20 Reconstruction

- Begin at Richardson Corner Rd, Charlton
- Extend 3.2 miles east to Rte. 12, Oxford
- Approximately 26,000 vehicles/day





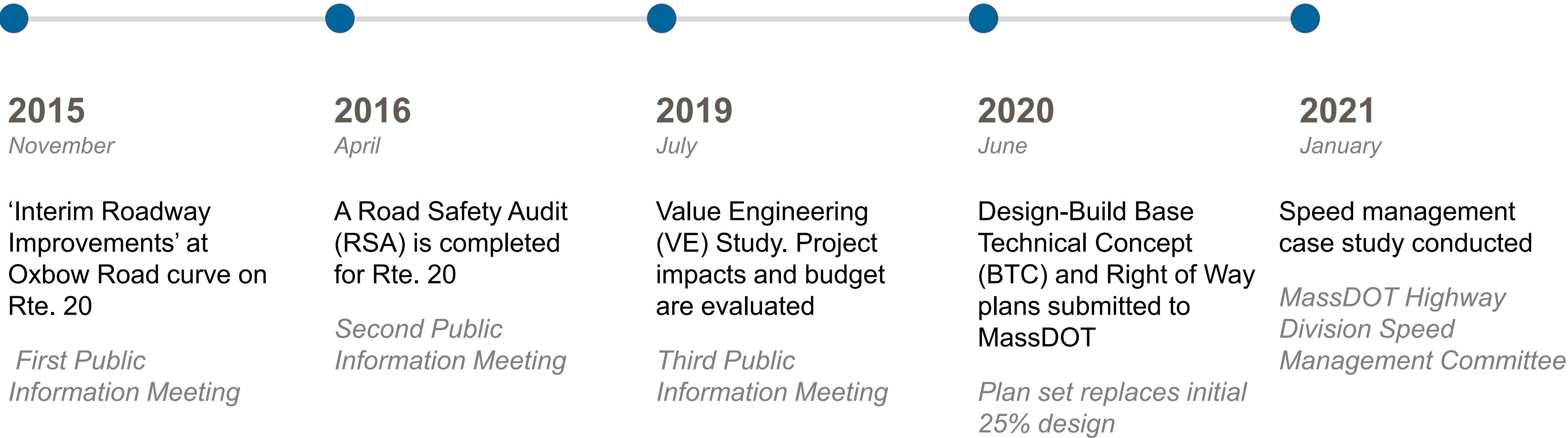
## History of Public Outreach

- Business Owners Meeting – Oxford Town Hall, October 2012
- Public Informational Meetings
  1. February 2016 – Charlton Middle School, February 2016
  2. February 2017 – Oxford High School, February 2017
  3. January 2020 – Oxford High School, January 2020
- Briefing to Local & State Officials – Oxford Police Department (PD), November 2019
- Meetings with Charlton and Oxford Safety Officials – Oxford PD, December 2019
- Design Public Hearing – Virtual Zoom Webinar, May 13, 2021





# How did we get here?







**Why was this  
project  
initiated?**

01/11



## Existing Conditions

- Safety and speed concerns
- Narrow roadway
- History of crashes along the corridor
- Traffic operations
- Functionally obsolete bridges
- Limited pedestrian/bicycle accommodations







**What do we  
want to  
accomplish?**



# Project Goals

Safety



Bridge Replacement



Mobility





## Project Purpose and Scope

**The purpose of this project is to improve safety of the Route 20 corridor by:**

- Median barrier installation
- Roadway resurfacing and widening
- Improving alignment
- Improving substandard intersections
- Bridge replacement
- Bicycle and pedestrian accommodations
- Associated signage, pavement markings, guardrail, retaining walls, and storm drainage



## Safety Improvements

- Roadway widening (median, shoulders, and turning lanes)
- Raised median or barrier separating opposing directions of travel
- Improve roadway alignment and stopping sight distance
- Addition of a roadside clear zone for vehicle recovery or guardrail
- Designated 'Emergency Pull-Off Areas'
- Improvements to Route 56 traffic signal operation





## Speed Mitigation Initiatives

Design elements shown to reduce speeds include:

- Designated 'Emergency Pull-Off Areas'
- Speed feedback signs and chevron signage
- Advisory speed signage
- Roadway widening providing median and roadside shoulders

*The Charlton-Oxford Route 20 Project is a focus and case study for the MassDOT Highway Division Speed Management Committee.*







**What is the  
preferred  
alternative?**



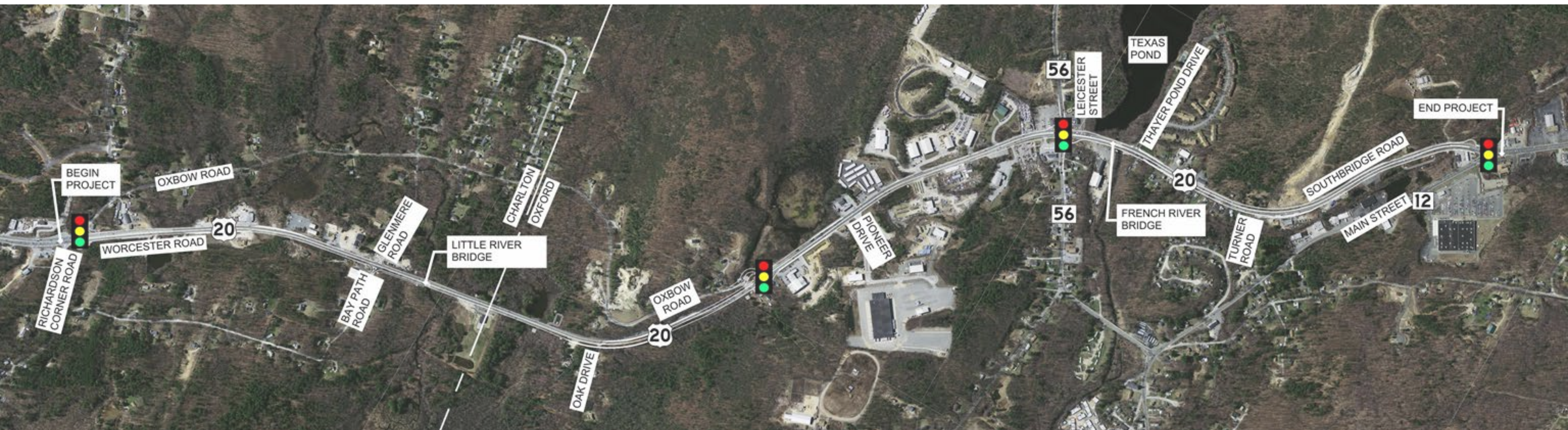
## Alternatives Considered

- Roadway travel lane and shoulder widths
- Divided median type and location
- Signalized intersection type and location
- Bridge rehabilitation or replacement
- Pedestrian and bicycle accommodations



# Charlton-Oxford Route 20 Reconstruction

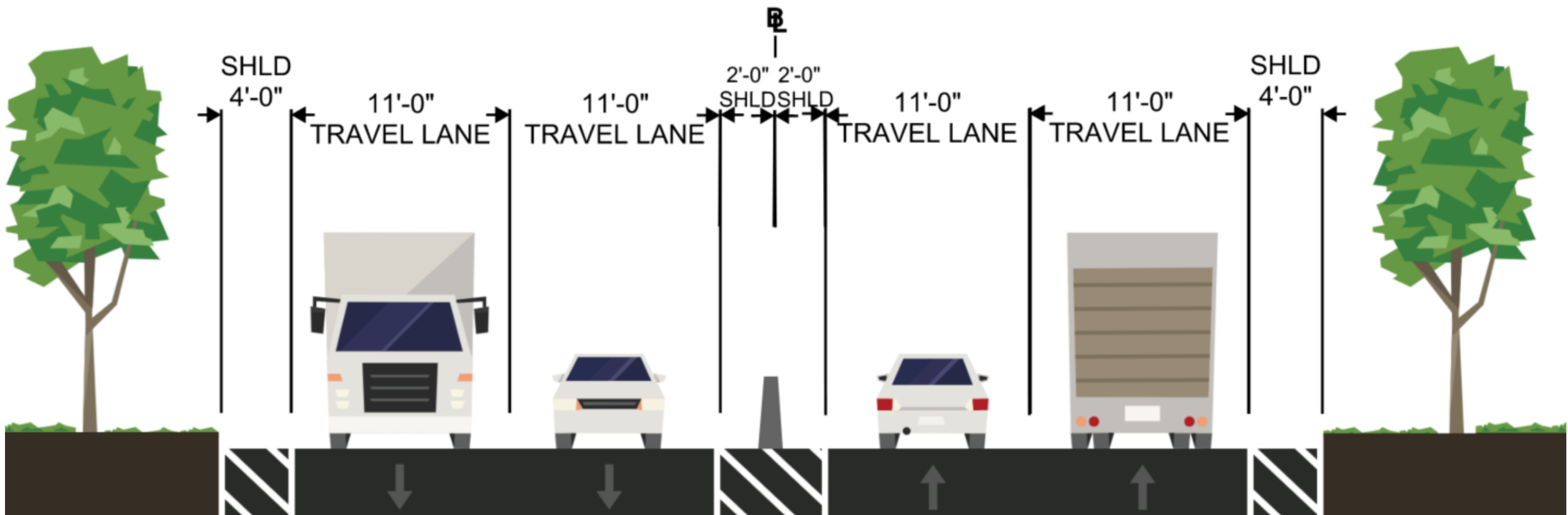
- Median island/barrier
- Roadway widening
- Four signalized intersections
- Full U-turn locations
- Bridge replacements





## Richardson's Corner Road to Oxbow Road

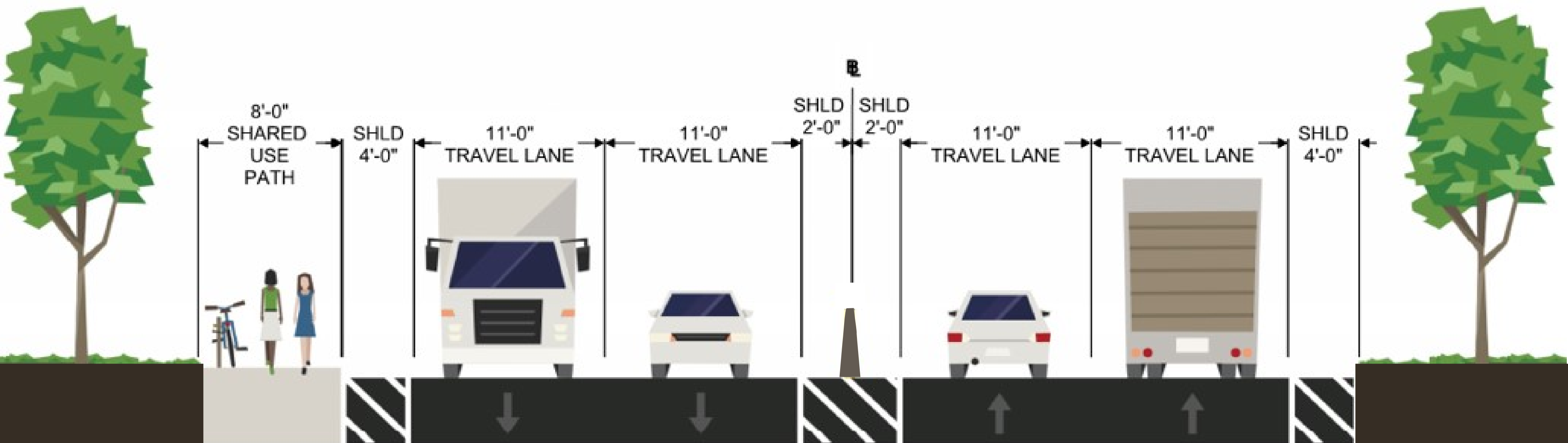
- Cement concrete median barrier, matching the existing condition west of the project limits in Charlton





## Oxbow Road to Route 56

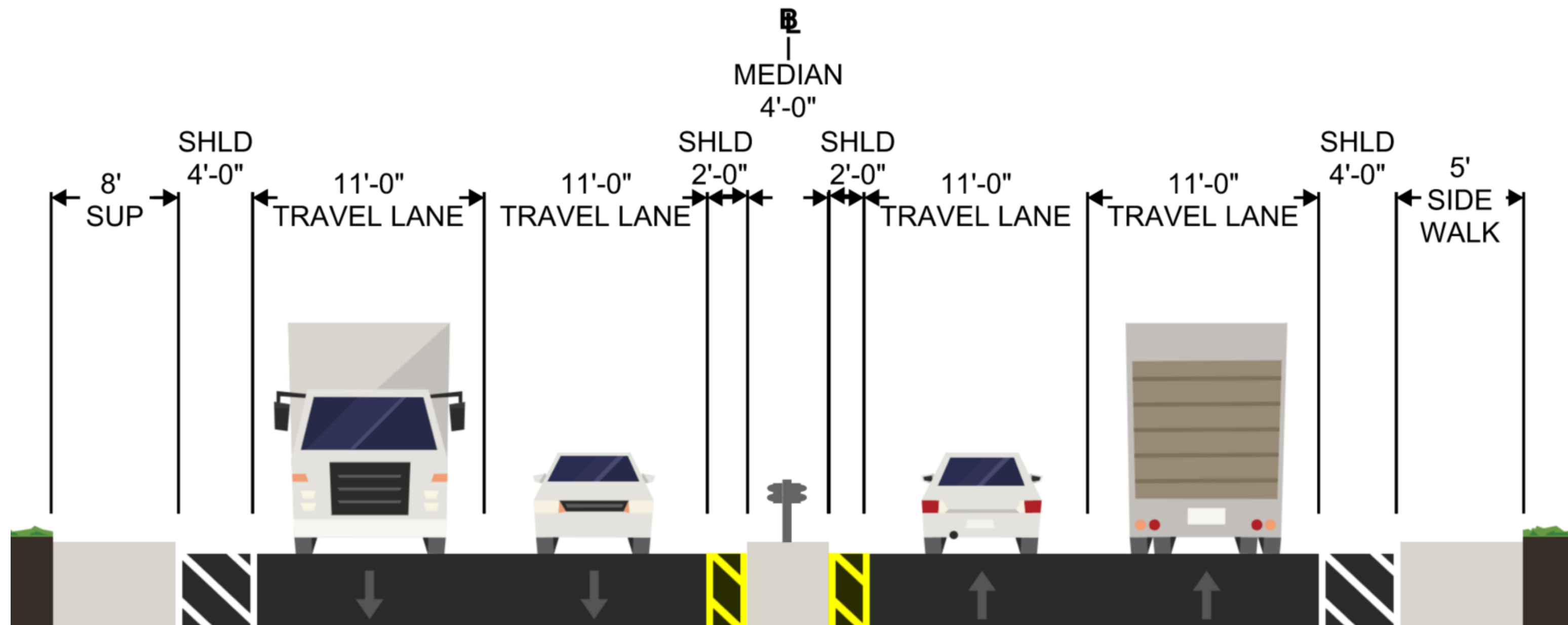
- Cement concrete median barrier, matching the existing condition west of the





## Route 20 – From Route 56 to Route 12

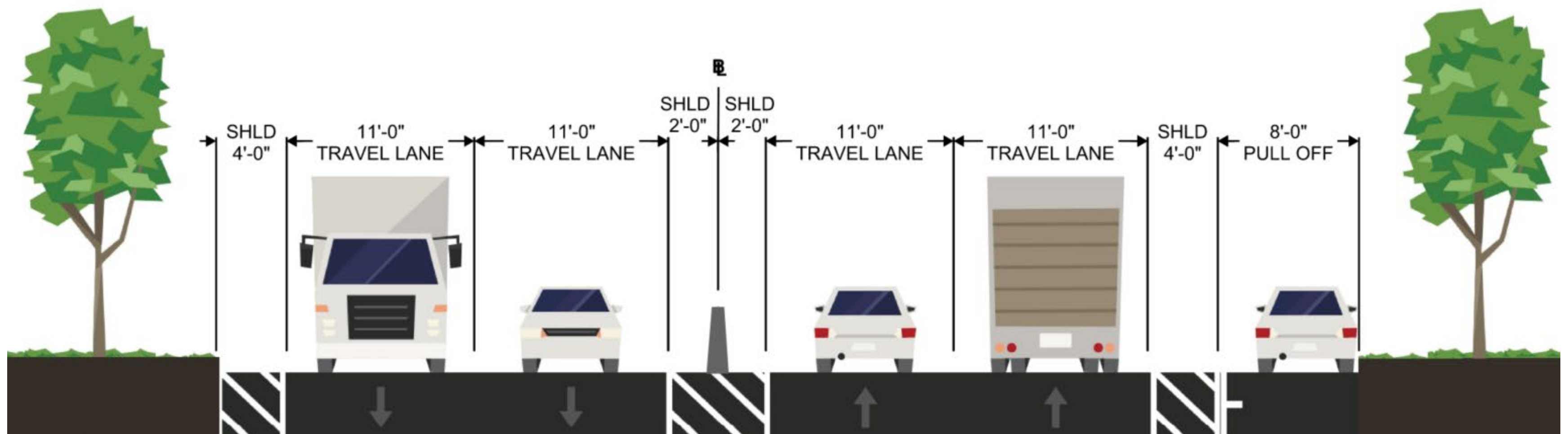
- 4-foot-wide raised curb median, matching the existing condition east of the project limits in Auburn. Guardrail treatment provided when needed along curves.





## Emergency Pull Off Areas

- Emergency pull off areas provide shoulder width for emergency responders, traffic enforcement, vehicle breakdowns, and roadway maintenance crews
- Locations determined in coordination with Charlton and Oxford emergency responders and placed to minimize property and environmental impacts



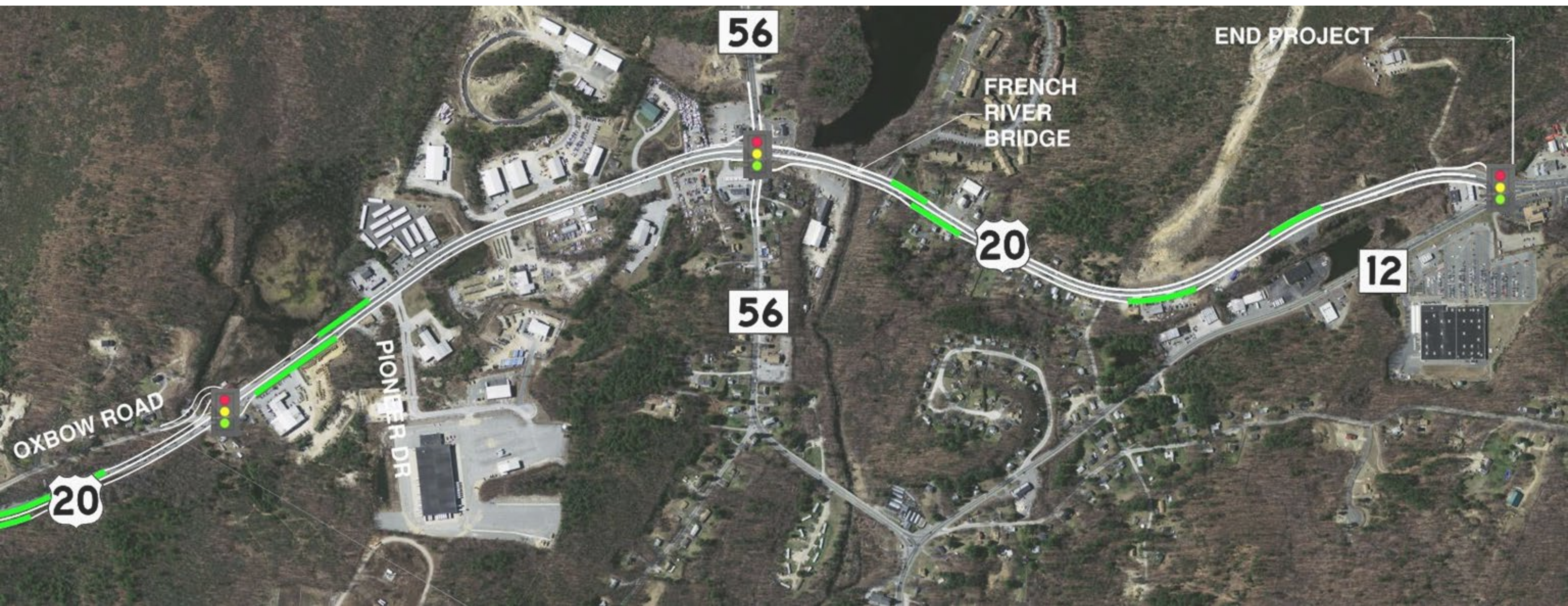


# Emergency Pull Off Areas (cont.)





# Emergency Pull Off Areas (cont.)



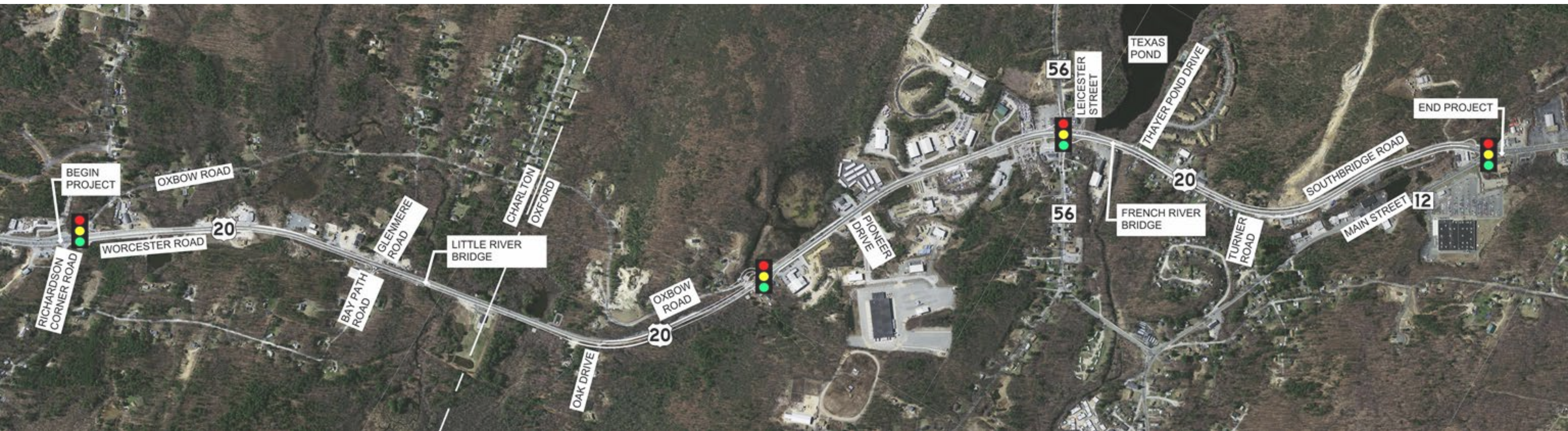




# Route 20 Intersection Improvements



# Intersections and U-Turn Locations



## 4 signalized intersections

- Richardson Corner Road
- Oxbow Road (new signalized intersection)
- Route 56
- Route 12/20

Investigation and analysis were performed and determined current conditions do not warrant a signalized intersection at the following locations:

- Bay Path and Glenmere Road
- Pioneer Drive
- Thayer Pond Village (Emergency vehicle access)



# Existing – Richardson Corner Road, Charlton





# Proposed – Richardson Corner Road, Charlton



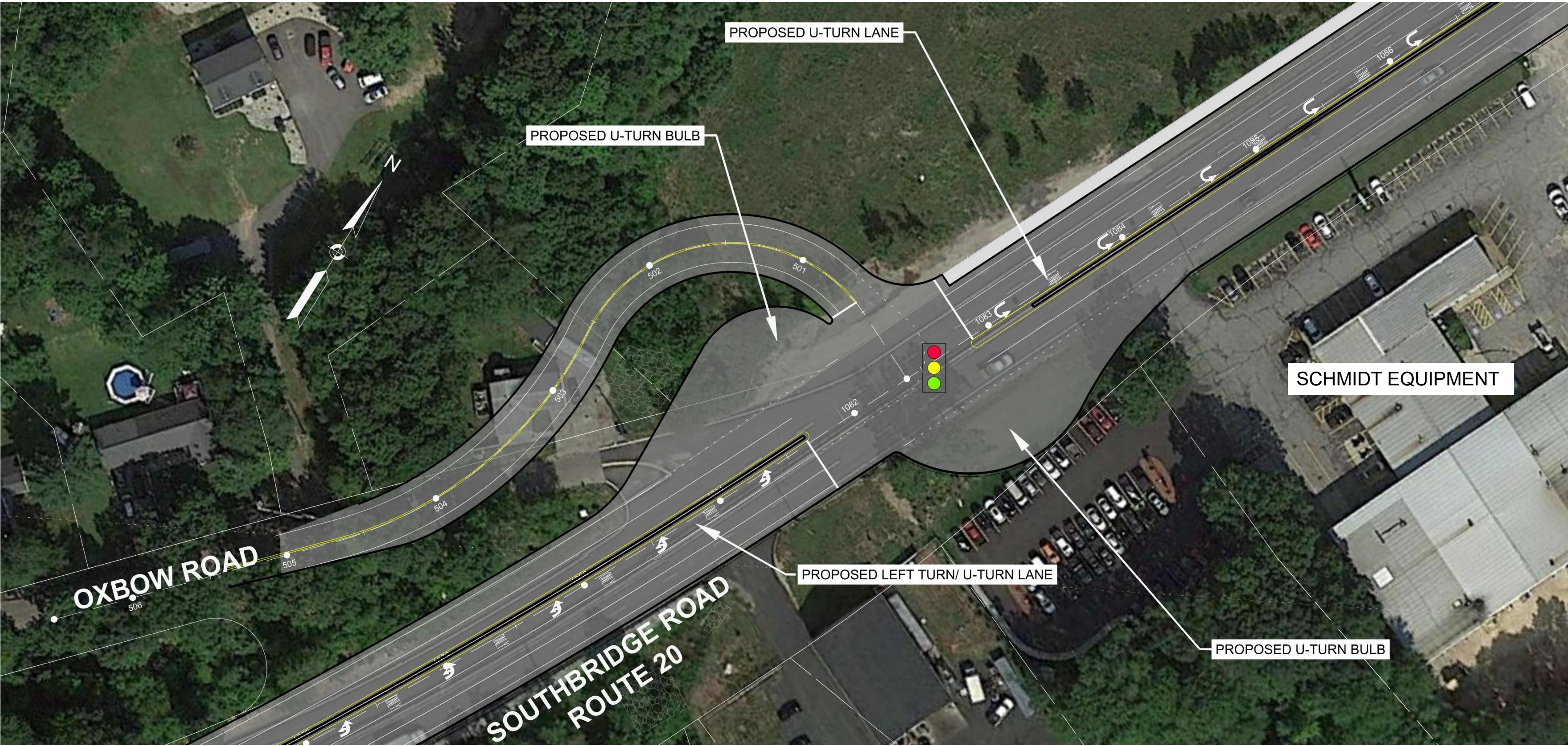


# Existing – Oxbow Road Intersection, Oxford





# Proposed – Oxbow Road Intersection, Oxford





# Existing – Route 56 Intersection, Oxford



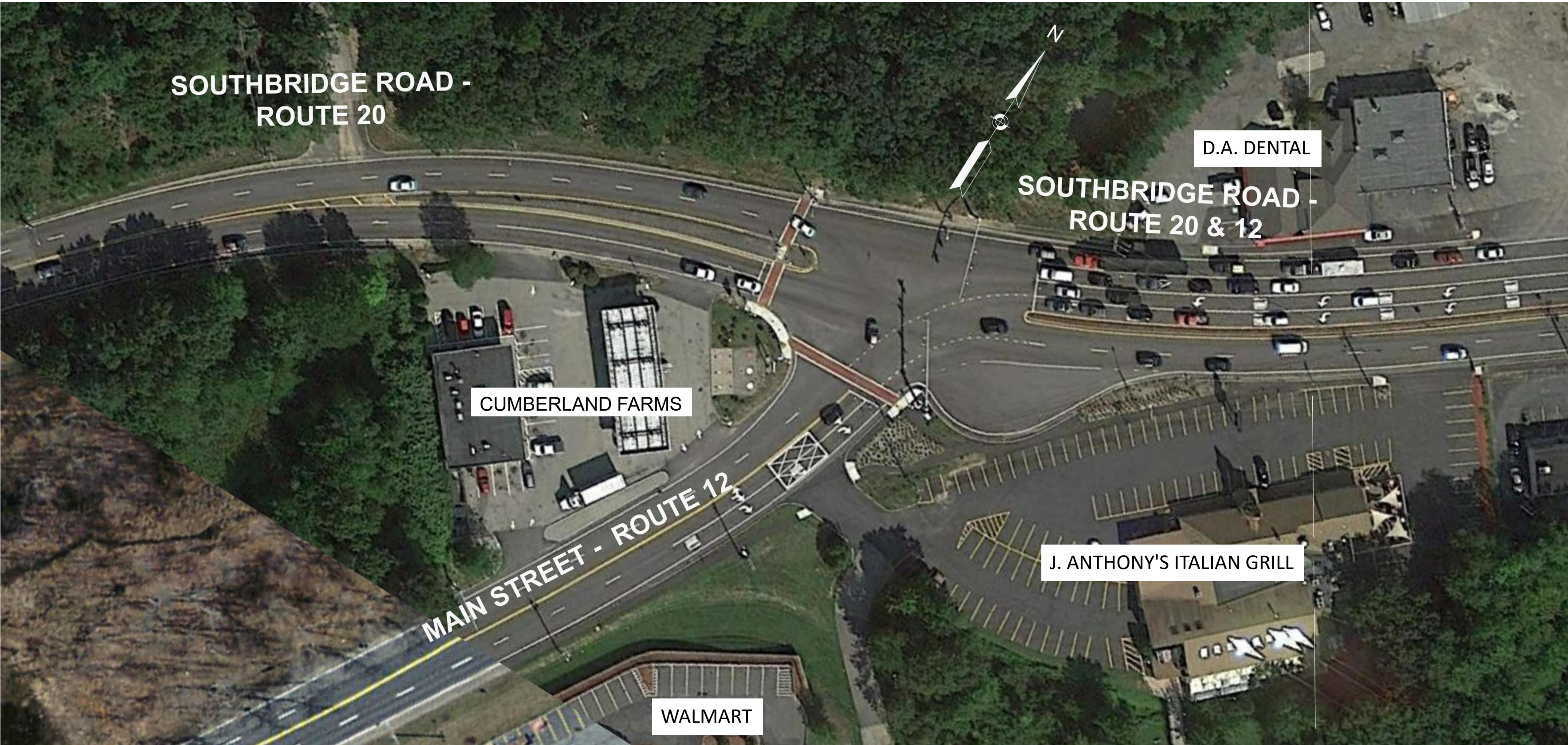


# Proposed – Route 56 Intersection, Oxford



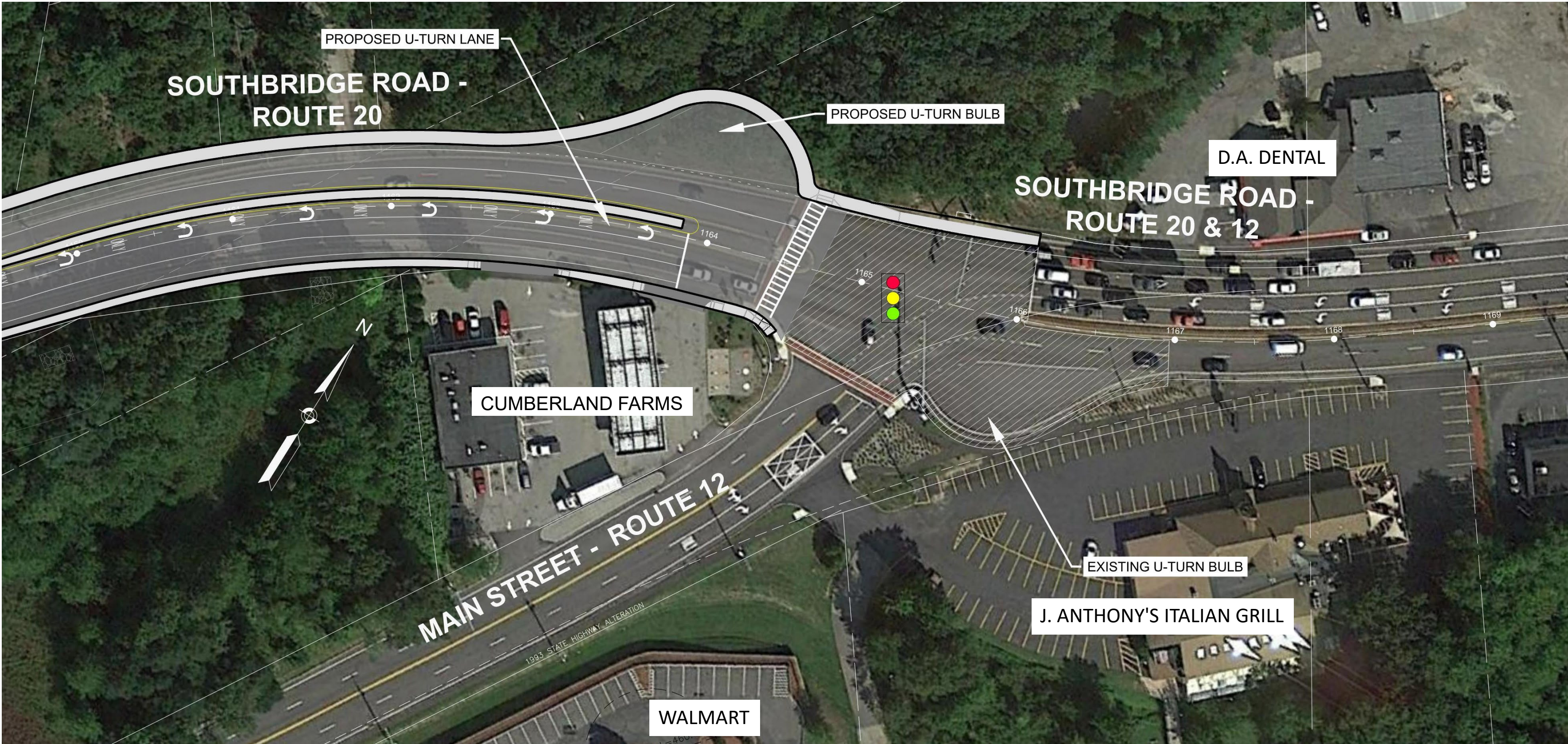


# Existing – Route 12 Intersection, Oxford





# Proposed – Route 12 Intersection, Oxford







**How will  
bicyclists and  
pedestrians  
be impacted?**



## Proposed Bicycle and Pedestrian Accommodations

- 8' wide Shared Use Path (SUP) for bicycles and pedestrians
- 5' wide pedestrian sidewalk
- Crosswalks and pedestrian crossing push button with on-demand signal at each existing signalized intersection







**What are the  
environmental,  
and cultural  
resource  
impacts?**

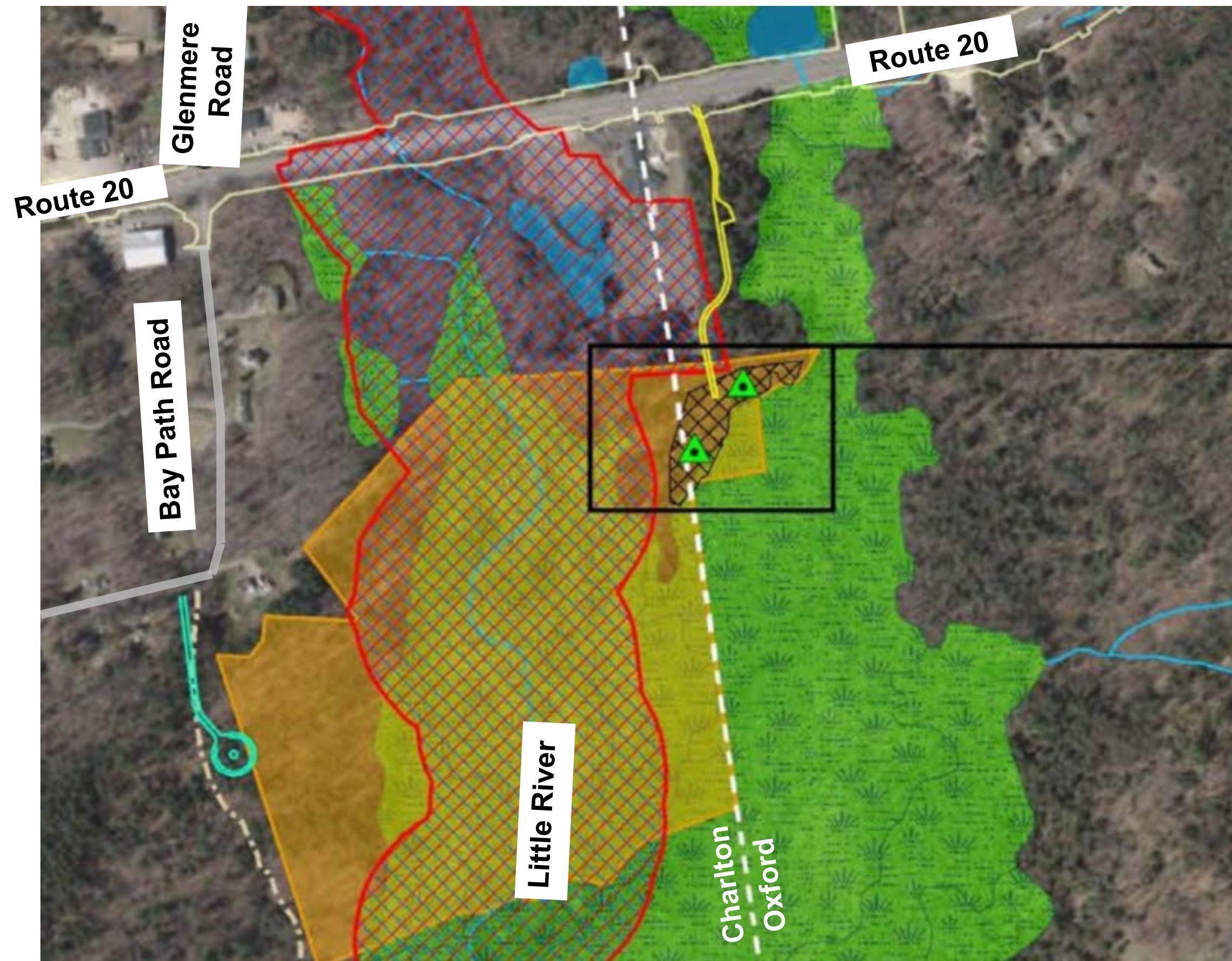


# Environmental Impacts

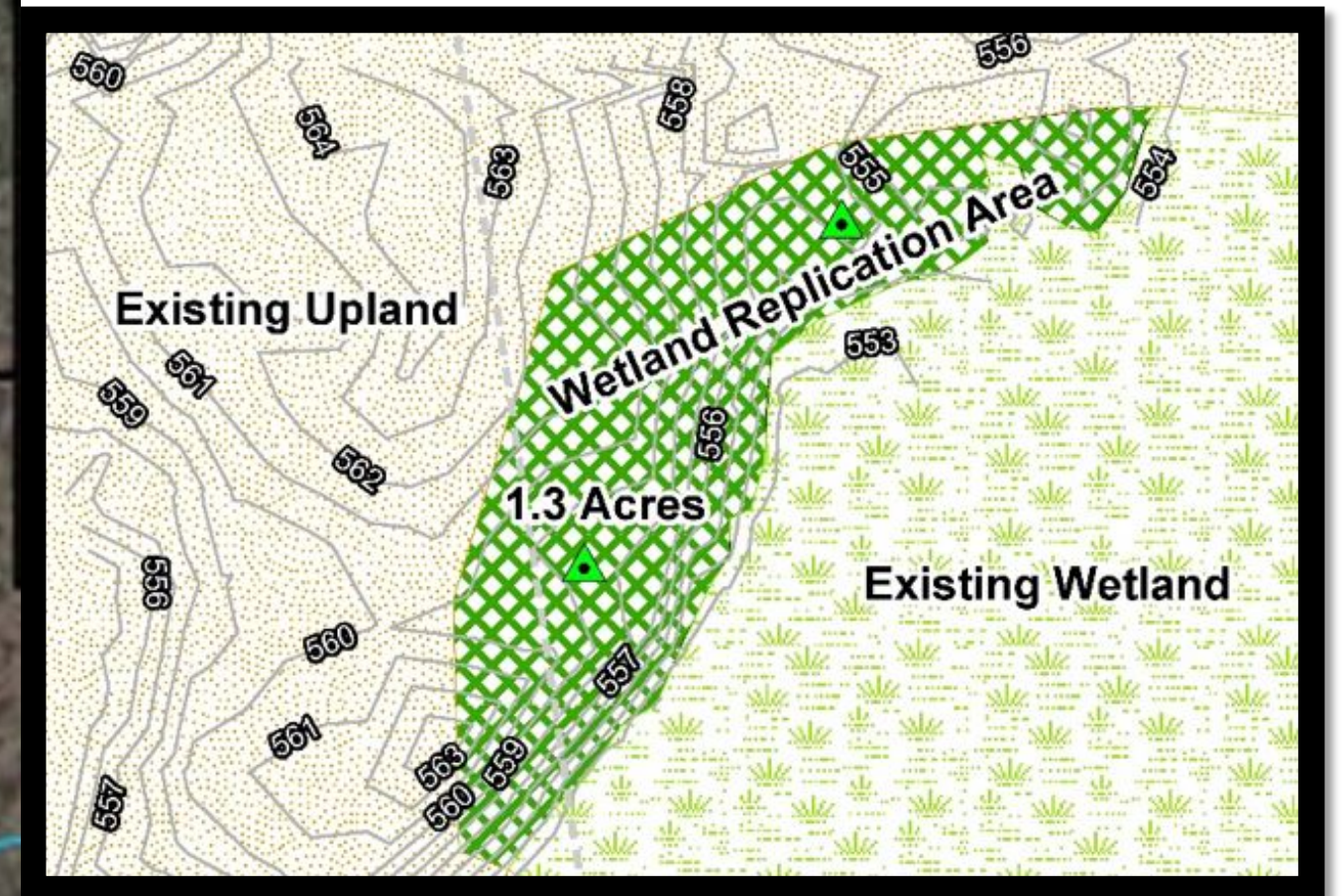
- Bordering vegetated wetland
- Land under water
- Bank
- Rare and endangered habitat
- Cold water fishery
- Culvert replacement







## Regulatory Approvals/Mitigation



- 42 Acre conservation parcel
- 1.3 +/- Acre wetland replication
- Stormwater management
- Improved stream crossing



# Cultural Resource Impacts

## Abisha Learned Homestead

- No impact to the structure
- Coordination with Town of Oxford Historical Commission
- Historic wall type
- Commemorative plaque







**How will your  
property be  
impacted?**



## Community Impacts

- Private Parcel Impacts
  - 9.8 acres of permanent right-of-way (ROW) acquisition required
  - 42 acres land in fee and placed into conservation
  - Temporary easements
- MassDOT Right-Of-Way Bureau has begun contacting impacted property owners





**What is the  
construction  
approach?**



## Project delivery: Design-Build

- Combines design and construction services into a single contract
  - Authorized for Department use under MGL 149A, subsection 14-21
- Allows the contractor and designer to work together on all phases of the project
  - Promote innovation
  - Reduce project costs
  - Expedite project delivery
- Best Value Design-Build (BVDB) procurement
  - Project awarded based on the highest overall value considering both quality and cost.
  - Phase I –Short-list best qualified teams as determined by response to Request for Qualifications (RFQ)
  - Phase II –Submission of Technical and Price Proposals in response to Request for Proposals (RFP)



# Our Next Steps



**Fall 2021**  
Environmental  
Permitting



**Spring 2022**  
Right of Way  
Procurement



**Spring 2022**  
Advertisement/  
Request for  
Proposals (RFP)



**Summer 2022**  
Contract Awarded  
to Design-Build  
Proposer



**Winter 2025**  
Roadway and  
Bridges reach  
Full Beneficial  
Use (FBU)





**How will we  
keep you  
informed?**



## Project Information

Please submit any questions or comments to the project email listed below:

- [MassDOTRte20Reconstruction@dot.state.ma.us](mailto:MassDOTRte20Reconstruction@dot.state.ma.us)

Design Public Hearing Comment Period is 10 business days after the hearing is posted to the MassDOT website listed below:

- [www.mass.gov/route-20-reconstruction-project-in-charlton-oxford](http://www.mass.gov/route-20-reconstruction-project-in-charlton-oxford)

Use the "Sign Up" form/link to obtain additional information on the project:

- [MassDOT/MBTA Project Information - Signup](#)







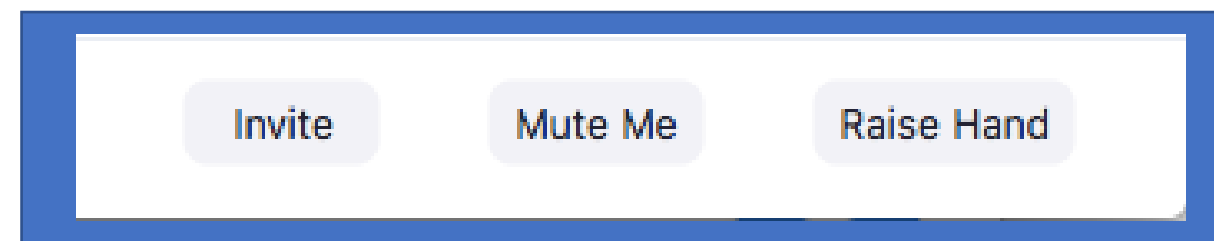
**Questions and  
discussion**



# Questions and Answers

## Instructions

- To comment, please click the “**Participants**” button at the bottom of your screen, then click the “**Raise Hand**” button (see below). Kindly wait for the moderator to recognize and call on you before speaking, you will be unmuted at this time.



- If you prefer to type your question in the Q&A box it will be answered in the order received and read out by the moderator to the project team.
- To ask a question via phone, dial \*9 and the moderator will call out the last 4-digits of your phone number and unmute your audio when it is your turn.

**Please share only one question or comment at a time, limited to 2 minutes, to allow others to participate.**





# *Thank You*

*Charlton-Oxford Route 20  
Roadway Reconstruction Project*

[www.mass.gov/route-20-reconstruction-project-in-charlton-oxford](http://www.mass.gov/route-20-reconstruction-project-in-charlton-oxford)

Zoom | May 13, 2021 | 6:00pm

Project File No. 602659

