

Commonwealth of Massachusetts
Department of Conservation and Recreation
Division of Water Supply Protection

FY '19 Forestry Project Proposals Wachusett Section

DWSP Internal Review of Proposed Forest Management Operations

✓ Each year, all watershed forest management operations go through an internal review process designed to tap into more expertise than is available to the forester alone.

The lots are reviewed by...

- ✓ Regional Directors
- ✓ Wildlife biologists
- ✓ Natural Resource staff
- ✓ Environmental Quality staff
- ✓ Civil Engineering
- ✓ DCR Archaeologist

✓ Comments\recommendations\restrictions are submitted to the foresters and incorporated into the management of each operation.

Forest Management Summary

Work is focused where a diversity of age classes is lacking

Openings are made in the forest overstory in order to give young trees the space and light they need to thrive

Openings range in size up to about 2 acres and average about 1 acre in each operation

A few older trees are retained in most openings which provide important habitat and structural diversity



WACH. RES. W. BOYLSTON. 8-YEAR OLD WHITE PINES & 6 YR. OLD MAPLES, PLANTED SPRING OF 1903. PINES 3 YRS. OLD, MAPLES 1 YR. APR. 1, '09. 6327

DCR - Wachusett Reservoir

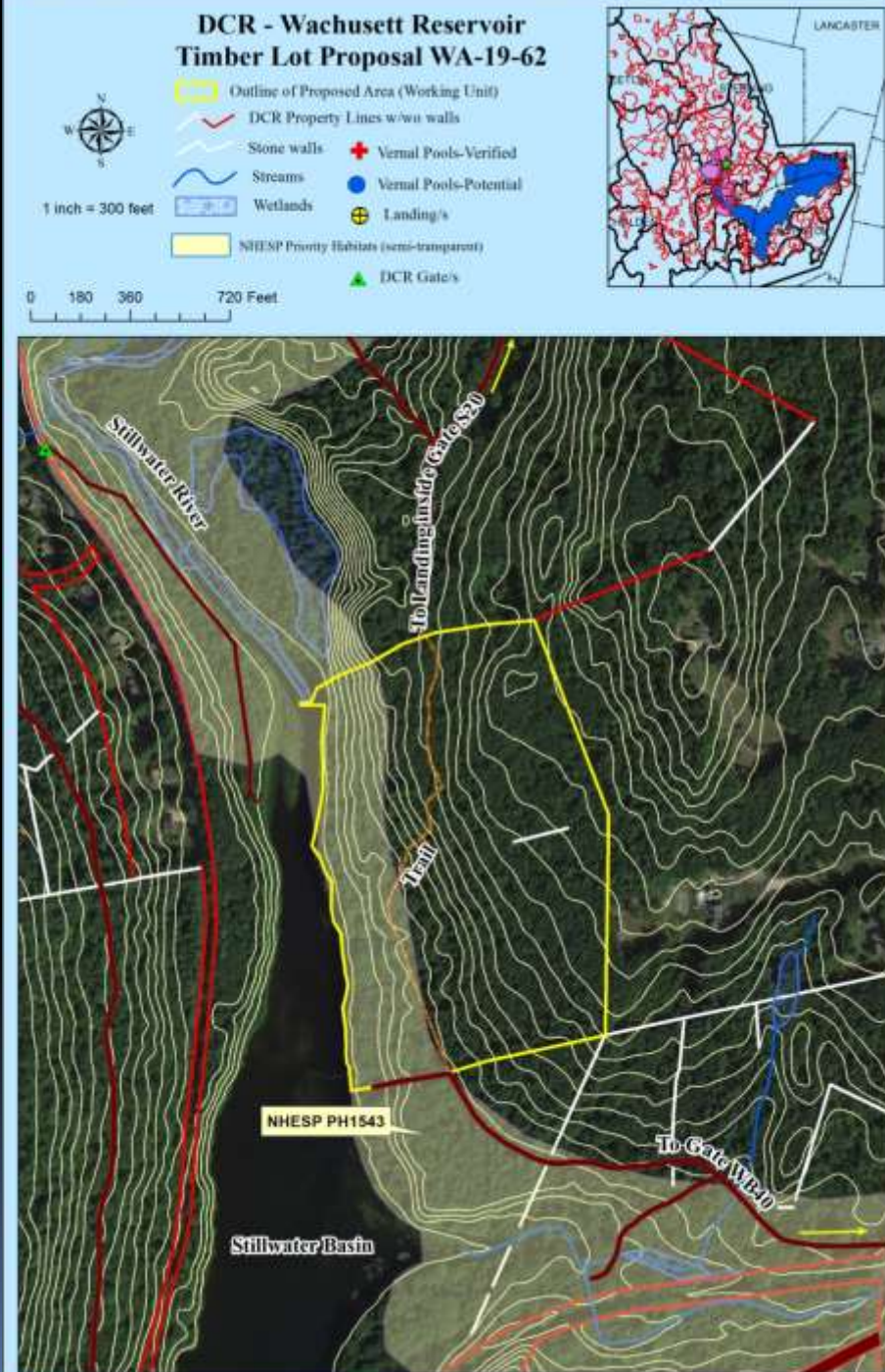
Proposed Timber Sales FY 2019

Locus Map (Scale 1:72,000 - 1 inch = 6,000 feet)



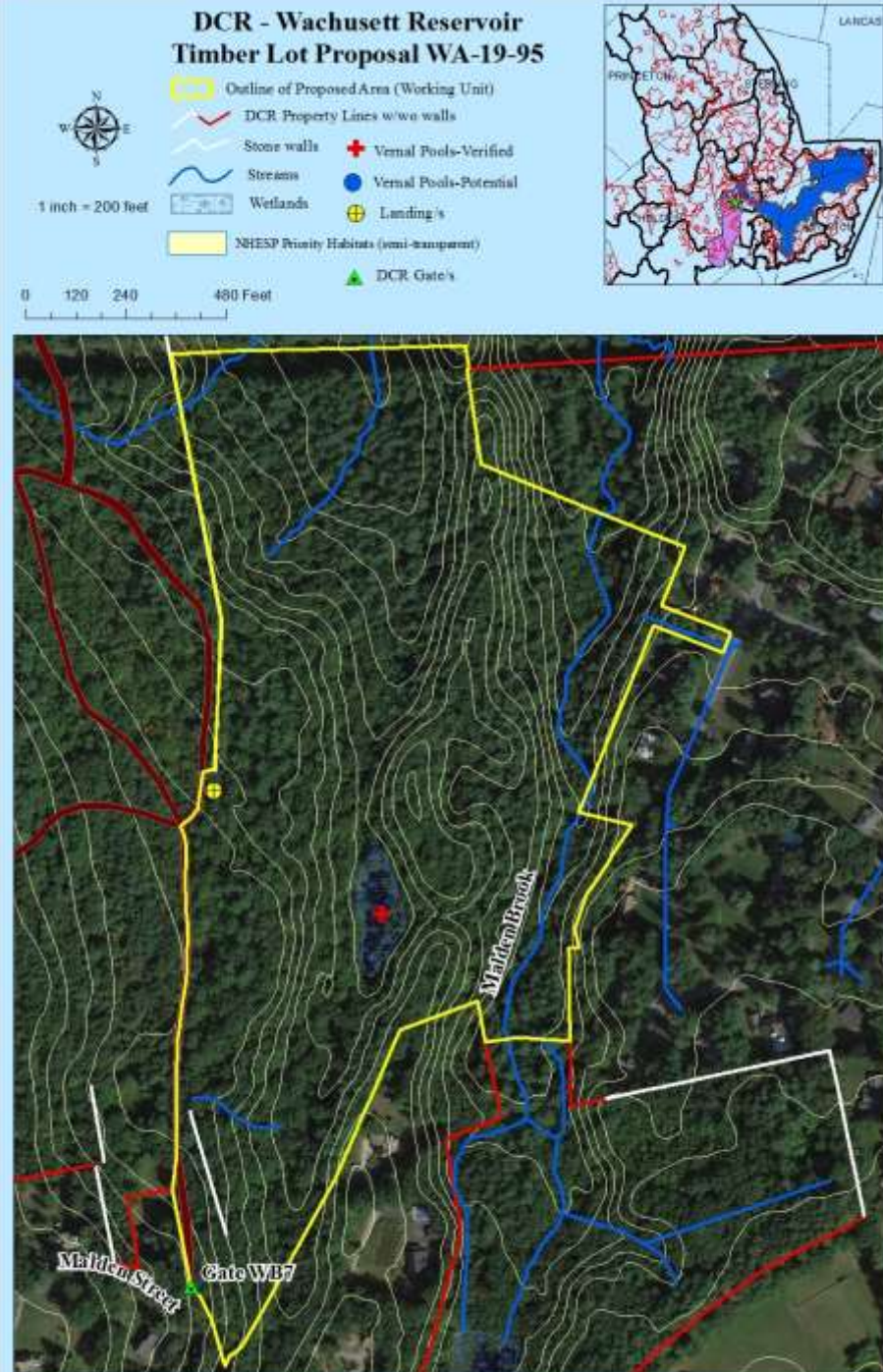
WA-19-62

- ✓30 acres of primarily mixed oak forest with a fair amount of white pine.
- ✓Diverse regeneration especially in the southern half – white pine, oaks, red maple, hickory, hophornbeam
- ✓Many trees have unhealed scars from a forest fire over 30 years ago.
- ✓Work will focus on creating openings to release young trees
- ✓Up to 10 acres of openings will be made



WA-19-95

- ✓ 39.4 acres of predominantly oak/hardwood and white pine forest
- ✓ The white pine in the north end of the area was planted by the MDC in 1905
- ✓ There is good regeneration comprised of white pine, red oak, white oak, beech, red maple, sugar maple and black birch
- ✓ Up to 13 acres of openings will be made
- ✓ The seep in the north end is a valuable wildlife resource that will be protected.
- ✓ The small pond in the south end is an unusually large and deep vernal pool.



WA-19-127

- ✓ 43.4 acres of predominantly mixed oak and white pine/oak forest
- ✓ Limited harvesting in the past has occurred in a minority of this area since the first operation in 1983.
- ✓ Good regeneration comprised of white pine, red maple, oaks, hemlock, and American hornbeam.
- ✓ Up to 14 acres of openings will be made
- ✓ Intersect NHESP Priority Habitat associated with the Quinapoxet River.



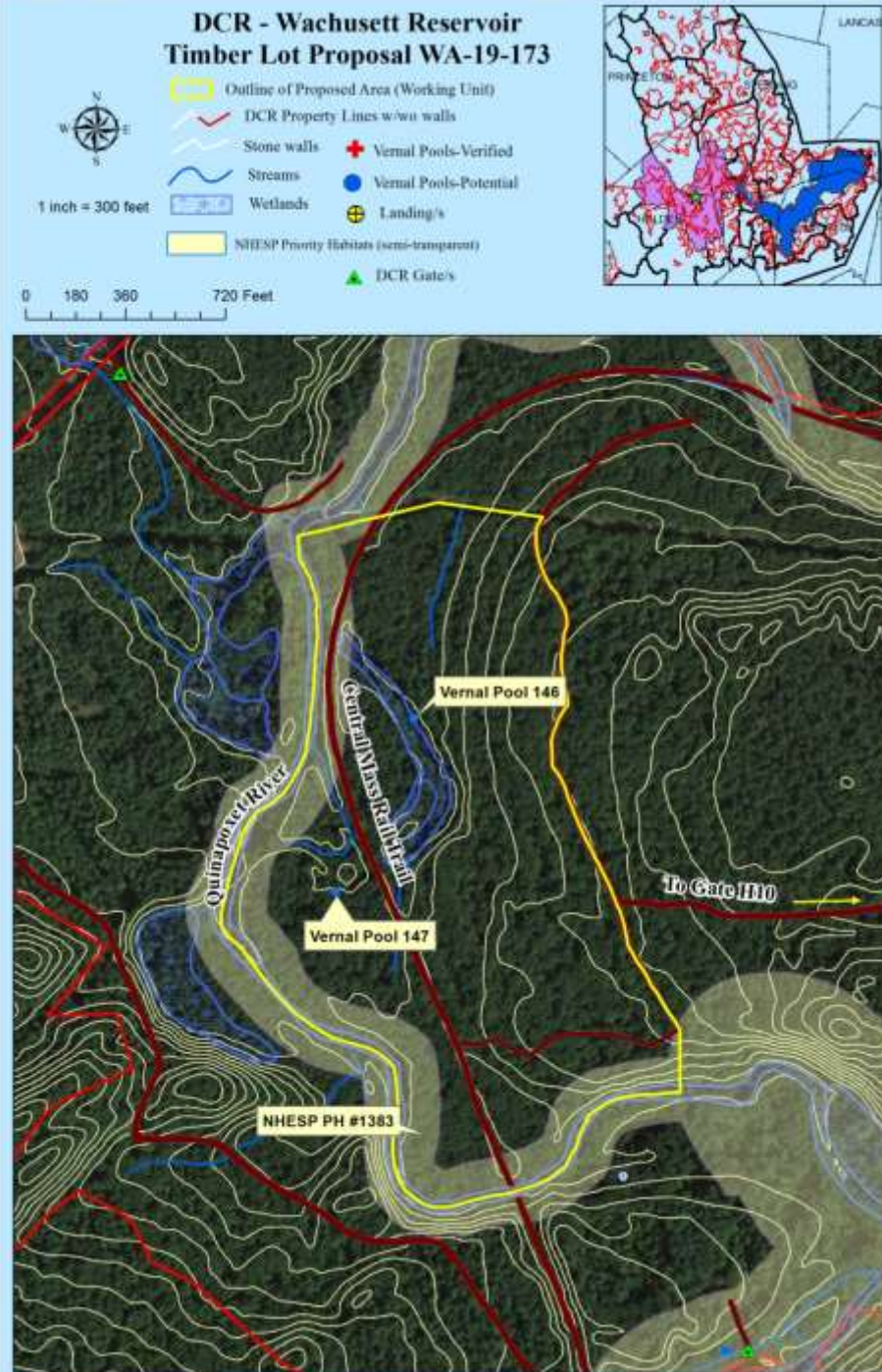
WA-19-133

- ✓ 44.1 acres of primarily white pine/oak and red oak forest.
- ✓ A harvest in 1996 was successful in establishing good regeneration comprised of white pine, red oak, black birch, hemlock and red maple.
- ✓ The hemlock is badly infested with the hemlock wooly adelgid which is causing mortality.
- ✓ Openings totaling up to 15 acres will be made.
- ✓ Intersects NHESP Priority Habitat associated with the Quinapoxet River.



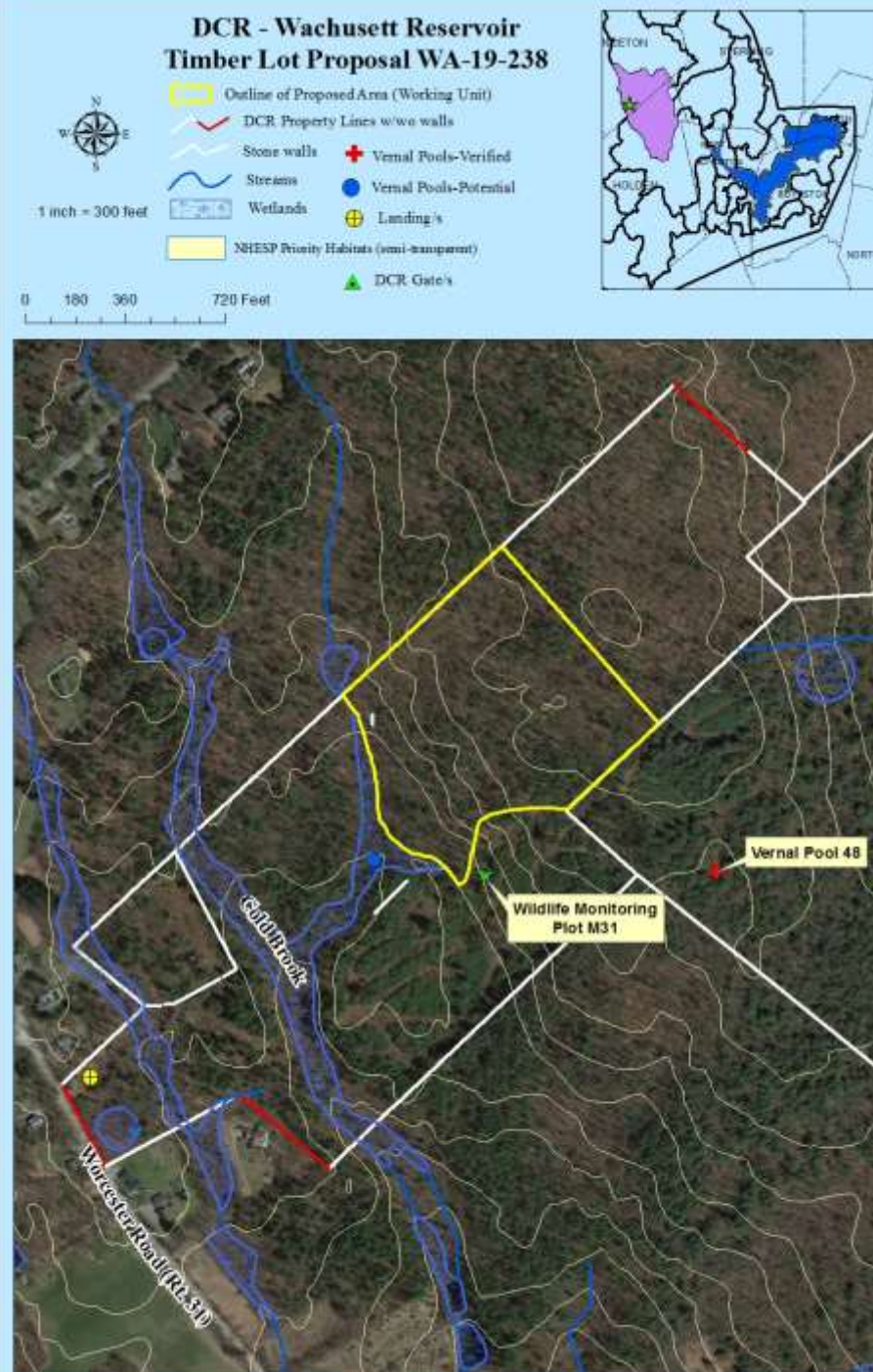
WA-19-173

- ✓ 51.1 acres of primarily mixed oak and mixed hardwood forest
- ✓ The area east of the Central Mass. Rail Trail was harvested in 1998
- ✓ There is excellent regeneration comprised of white pine, oaks, red maple, hemlock, black birch, sassafras and hornbeam.
- ✓ Up to 17 acres of openings will be made
- ✓ There are several vernal pools which will receive appropriate protection. This includes the somewhat unusual oxbow pool.
- ✓ Intersects NHESP Priority Habitat for associated with the Quinapoxet River



WA-19-238

- ✓ 16.7 acres of white pine/oak and mixed oak forest
- ✓ This is the first early successional management cut that will take place as discussed in the 2017 Comprehensive Land Management Plan
- ✓ The majority of the overstory trees in this 16.7 acre will be removed thereby creating a significant area of early successional habitat (ESH).
- ✓ Overstory trees will be retained singly and in small groups similar to the 12.6 acre ESH area that was created in 2006 which is immediately adjacent to the south of this area.



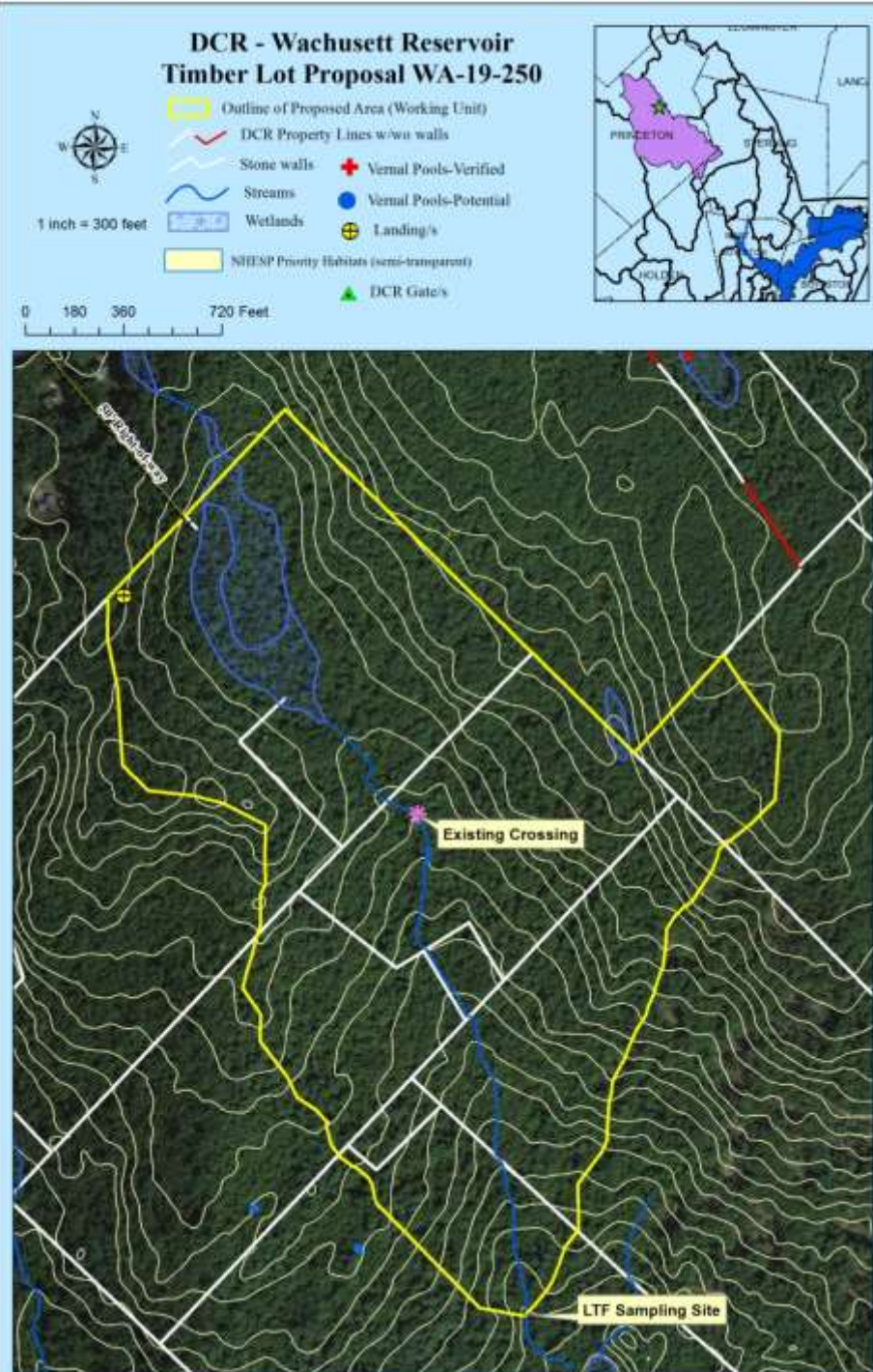
WA-19-241

- ✓ 68.4 acres white pine/hardwood, mixed oak and white pine stands.
- ✓ Logging prior to DCR acquisition has led to adequate regeneration comprised of white pine, oaks, red maple, black birch, white ash, black cherry, hickory, hornbeam, beech, hemlock, hophornbeam and sugar maple.
- ✓ Up to 22 acres of openings will be created.
- ✓ French Brook will be crossed at an old bridge location with stone abutments.
- ✓ There is a vernal pool in the eastern half of the area just north of a stone wall.



WA-19-250

- ✓ 88.4 acres of mixed hardwood, oak/hardwood and white pine/hardwood forest.
- ✓ This area is part of the long-term paired watershed study and has been chosen as the treatment area. The other subwatershed in Holden is the control area.
- ✓ There is very diverse regeneration in the southern and western portions comprised of white pine, red oak, red maple, black birch, white ash, yellow birch, black cherry, beech, hickory and hophornbeam.
- ✓ Up to 20 acres of openings will be made
- ✓ A stream crossing will occur on the skid trail where a culvert was installed decades ago.



✓ Written public comments are due by July 21st in order for the Division to address the public issues and incorporate suggestions and concerns into the silvicultural prescriptions.

✓ Public tours will be offered for any of the proposed timber sales. If interested, please notify DCR Forester Greg Buzzell at 508-792-7806 ext. 317. Tours are available until July 21st.

✓ For more information: <http://www.mass.gov/eea/agencies/dcr/water-res-protection/watershed-mgmt/watershed-forestry.html>

✓ Questions/Comments?