



THE
WALDEN
WOODS
PROJECT

WWW.WALDEN.ORG



Bald Eagle flying over Walden Pond.



Billy Joel and Don Henley perform at a WWP fundraiser. Photo: Larry Busacca



The WWP headquarters—a short walk from the Walden Pond State Reservation.



Walden Pond in Autumn.

HISTORIC AND ECOLOGICAL SIGNIFICANCE OF THOREAU'S WALDEN WOODS

- The principal place that inspired Henry David Thoreau's philosophies; led to the development of the modern conservation movement and our national parks system;
- 2,680 acres surrounding WP -- approx. half in Concord/half in Lincoln;
- Defined ecologically and by historical references from HDT's writings



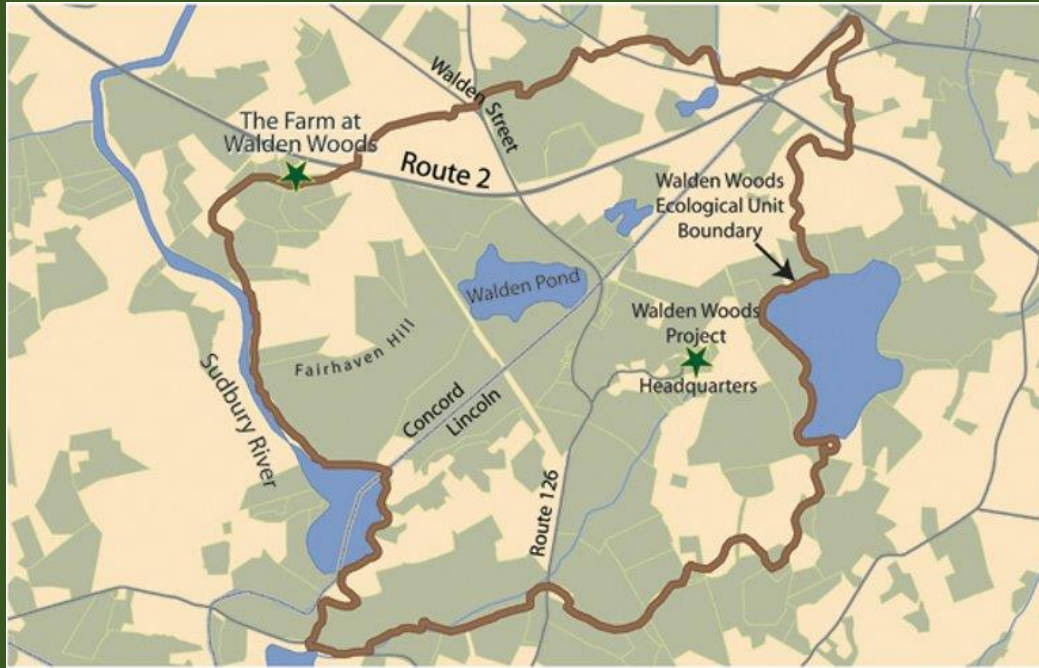
Pine Hill, next to Walden Pond State
Reservation. Photo: Scot Miller

WHY IT'S IMPORTANT TO PRESERVE WALDEN WOODS

- Ensure that this national treasure remains a model of preservation and conservation to inspire an international ethic of environmental stewardship for generations to come;
- Birthplace of the American conservation movement must be conserved; symbolic of conservation struggles around the world;
- Relevance of HDT's writings to contemporary environmental and social reform issues;
- WP is an NHL and WW Listed twice by the NTHP as one of America's Most Endangered Historic Places;
- Visited annually by 600,000 people – international and local destination;
- Large commercial development in WW affects historic and ecological integrity of WP, as well as the WW;
- Focus: large parcels threatened with development and smaller parcels that have high conservation value; short window of opportunity – whatever we do not protect in the near term, will be lost.



Late Summer at Bear Garden Hill/Walden Woods.



Conservation Status of Land
Walden Woods, Concord and Lincoln, MA

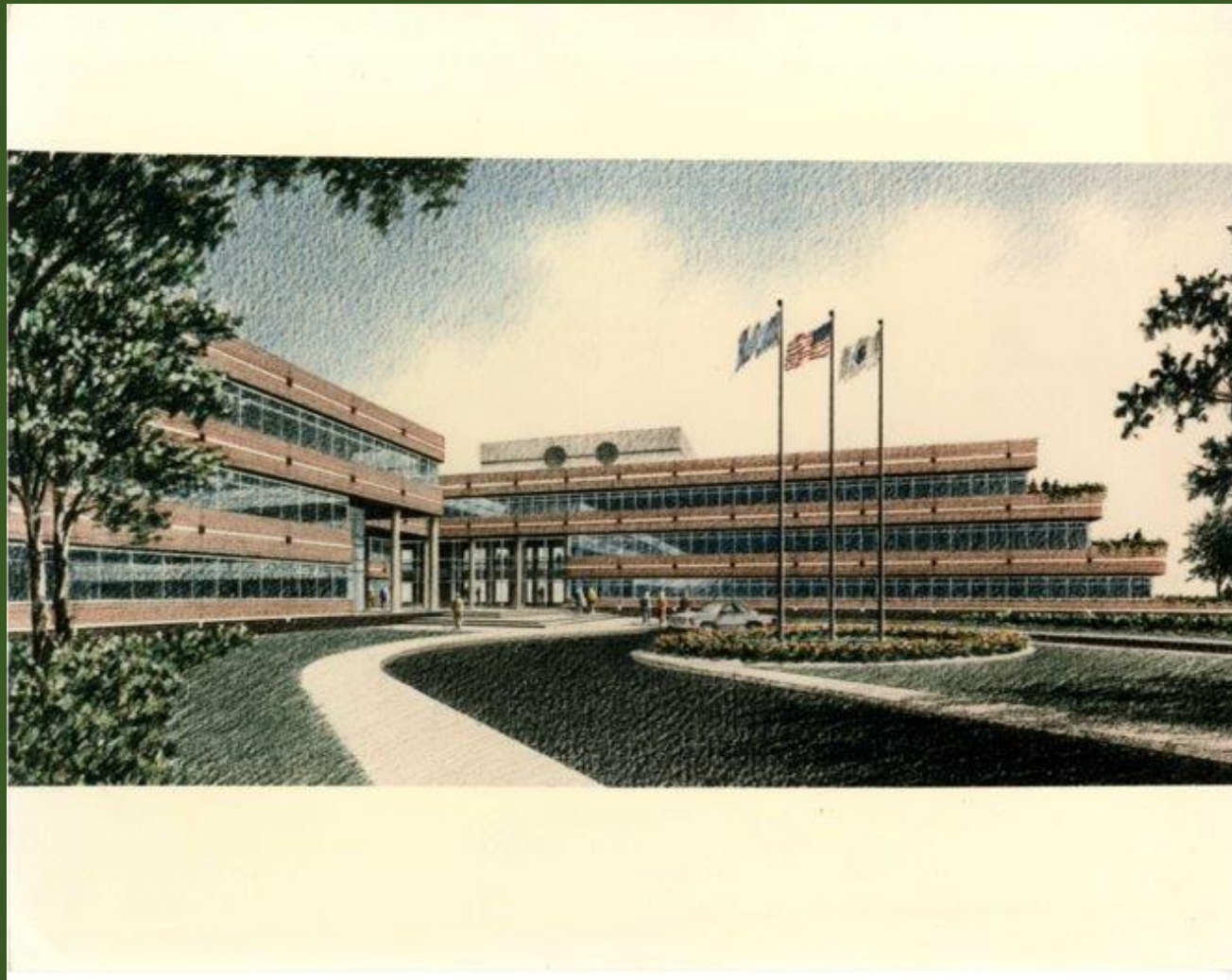


1:22,000 scale
0 0.1 0.2 0.4 0.6 0.8
Miles

- Walden Woods Project
conservation land, fee and CR
- Federal, state, municipal, and non-profit
conservation land, fee and CR
- Chapter 61 Forestry and Agriculture



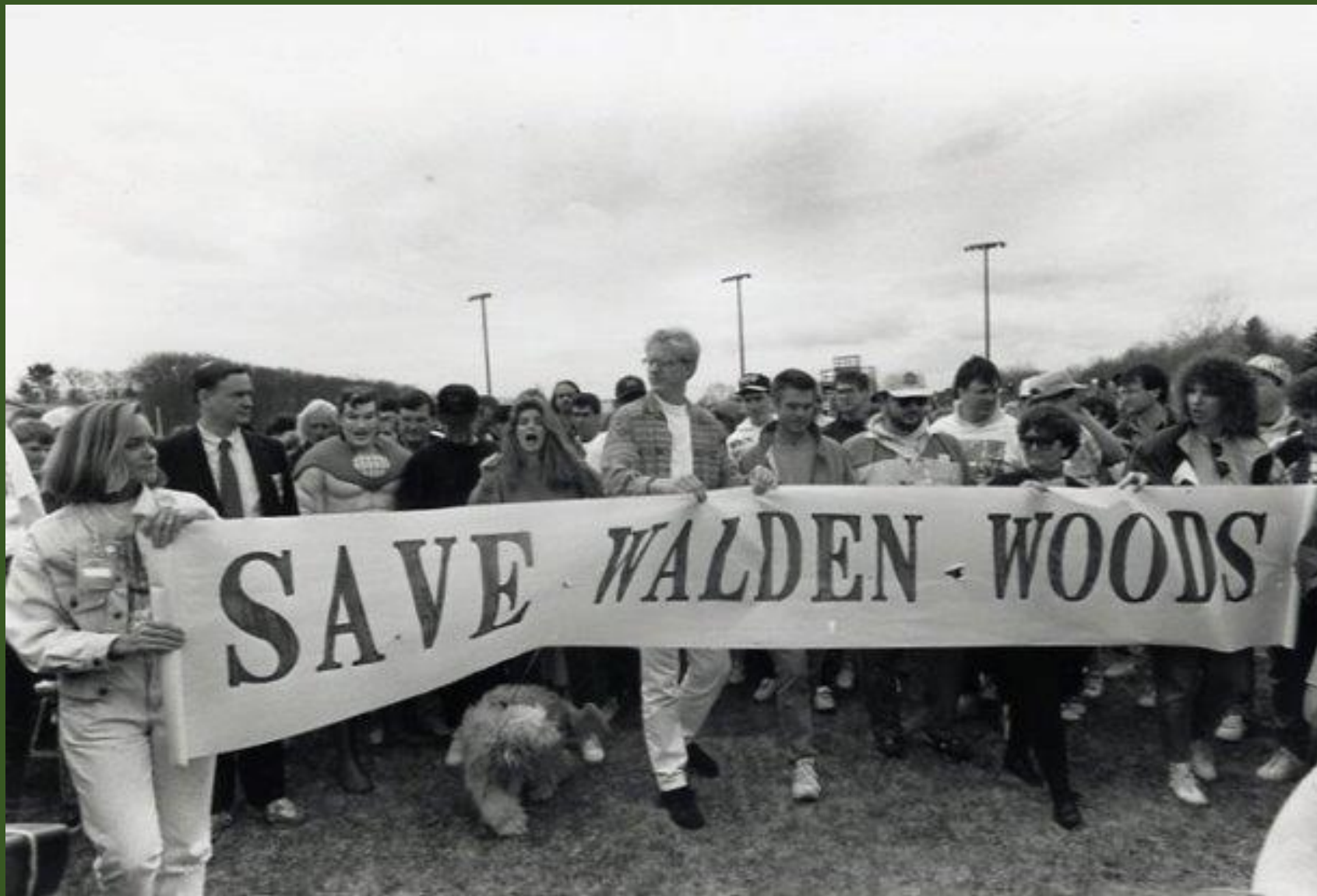
Walden Woods looking southwest with Walden Pond in the upper left. Concord landfill site in right foreground.



Proposed office building on Brister's Hill/Walden Woods.



Thoreau's Path on Brister's Hill.



1992 "Walk for Walden". Photo: Lowell Sun



Robert Redford, an early and steadfast supporter of The Walden Woods Project, accepts The WWP's 2014 Global Environmental Leadership Award from Don Henley. Photo: Scot Miller



Entrance to Thoreau's Path on Brister's Hill.



A student reads from Dr. Seuss' *The Lorax* at Thoreau's Path on Brister's Hill.



Reflection Circle at Thoreau's Path on Brister's Hill.



Congressman/Civil Rights Activist John Lewis and Senator Edward M. Kennedy attend Brister's Hill opening.



2013 Bench By the Road Dedication Ceremony.



Forest Floor at Bear Garden Hill.



Trail at Bear Garden Hill.



David McCullough visits the Walden Pond
State Reservation.



Children are captivated by Dr. Edward O. Wilson who is showing them an ant he found in Walden Woods. Photo: Phil Lupsiewicz



Students enjoy wildlife at the Walden Pond State Reservation.



The Walden Pond State Reservation Visitor Center.



Where's Your Walden exhibit in the Walden Pond State Reservation Visitor Center.



In the Apple or Google Store search: Walden Pond and Woods Guide and download the app.



Don Henley joins former DCR commissioner Leo Roy at the Walden Pond Visitor Center opening.

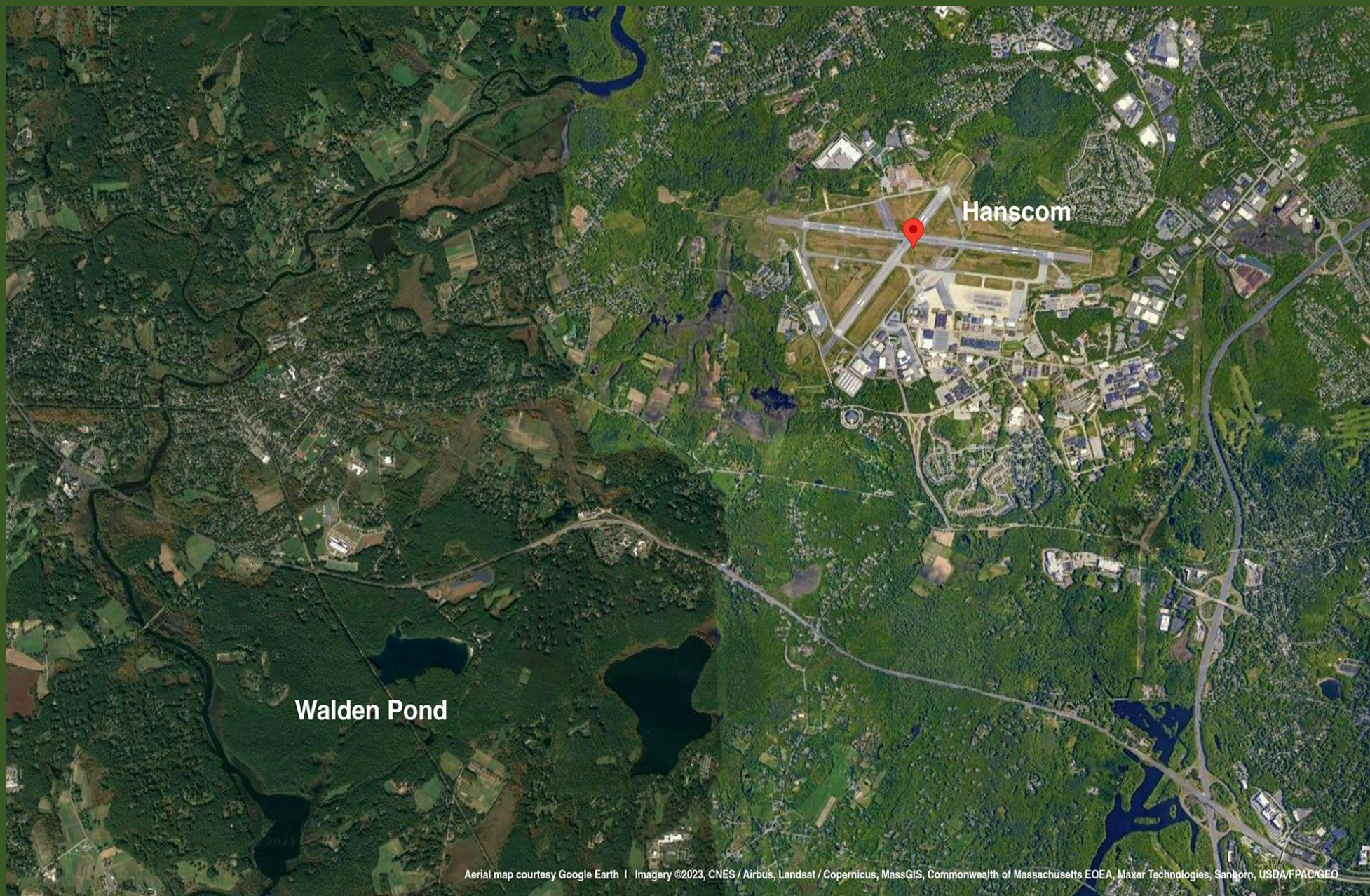


Walden Pond in winter. Photo: Scot Miller.



©Scot Miller/ScotMiller.com with aerial support from LightHawk

This photo shows the proximity of Hanscom field to Walden Pond.



Aerial map courtesy Google Earth | Imagery ©2023, CNES / Airbus, Landsat / Copernicus, MassGIS, Commonwealth of Massachusetts EOE, Maxar Technologies, Sanborn, USDA/FPAC/GEO



Moon setting over Walden Pond. Photo: Scot Miller

A close-up, high-angle shot of a dense field of green clover plants. The clovers are in various stages of growth, with some showing signs of aging or damage. The background is a soft, out-of-focus green, suggesting a vast field of similar vegetation.

Thank you!!
Find out more: WWW.WALDEN.ORG