

# MassDOT Water Transportation Study

*July 30, 2025*

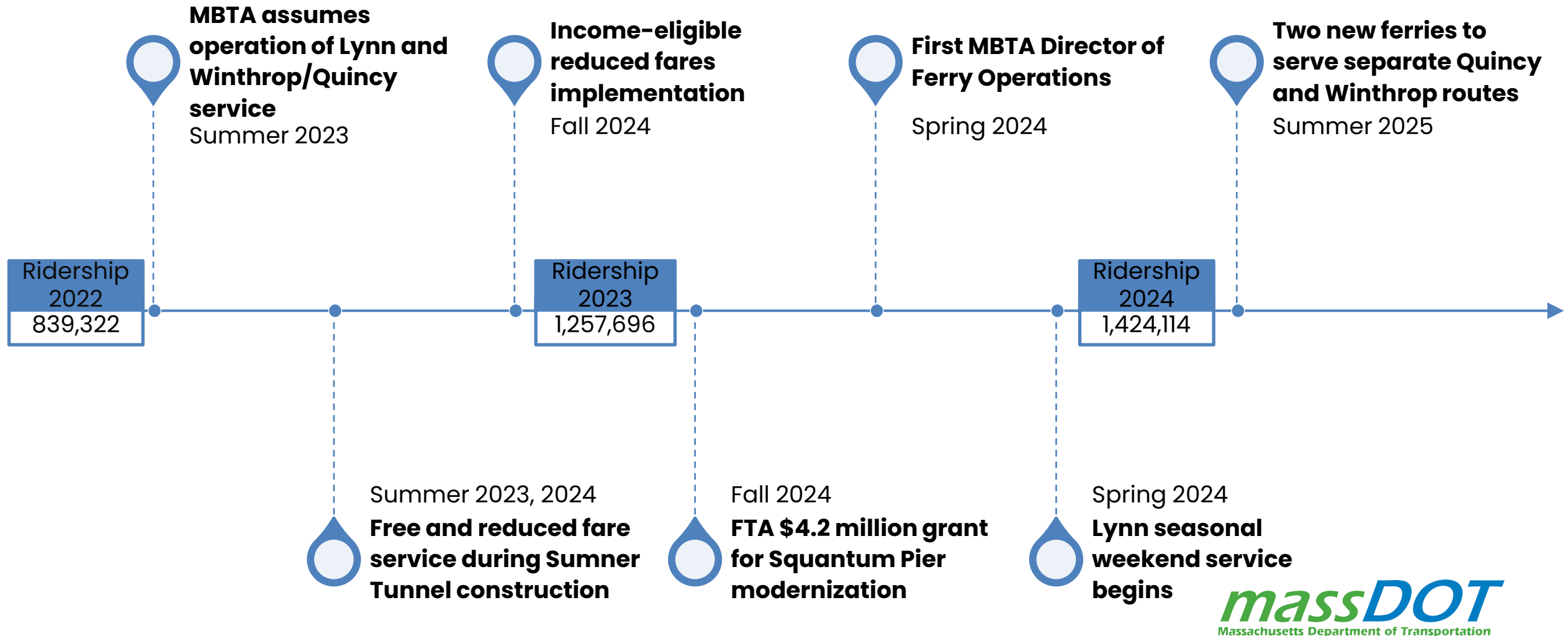


# **Table of Contents**

3. Water Transportation Investments
4. Water Transportation Project
5. Water Transportation Study Scope
6. Project Schedule
7. Public Engagement Strategy
9. Appendix

# Water Transportation Investments

3



# Water Transportation Project

4

- This project is based on language in the 2022 Bond Bill to “seek opportunities **to expand the current ferry system and to ensure equal and broad access**” to cities and towns.
- The project includes three components:
  - Water Transportation Study
  - Design & engineering of the preferred alternative network
  - 3–5-year pilot program of the preferred alternative network



Christening of the *Abigail Adams* and *Harbor Gem*.

# Water Transportation Study Scope

5

- The 12-month study will:
  - Identify potential **improvements to existing MBTA ferry routes and infrastructure**
  - Explore **new routes and terminal locations** to communities explicitly referenced in the Bond Bill, and to other locations as appropriate
  - Identify **multimodal access improvements** to current and potential ferry terminal locations
  - Identify **upgrades to improve the ferry experience** for customers (e.g.: better ramp accommodations, climate resilience measures, enhanced way finding and navigation, service animal accessibility, etc.)
- The study may ultimately recommend routes, terminals, and facilities locations in the cities and towns, including but not limited to, Gloucester, Lynn, Quincy, Salem, Winthrop, and the East Boston, North End, and South Boston waterfront sections of the city of Boston.

# Project Schedule

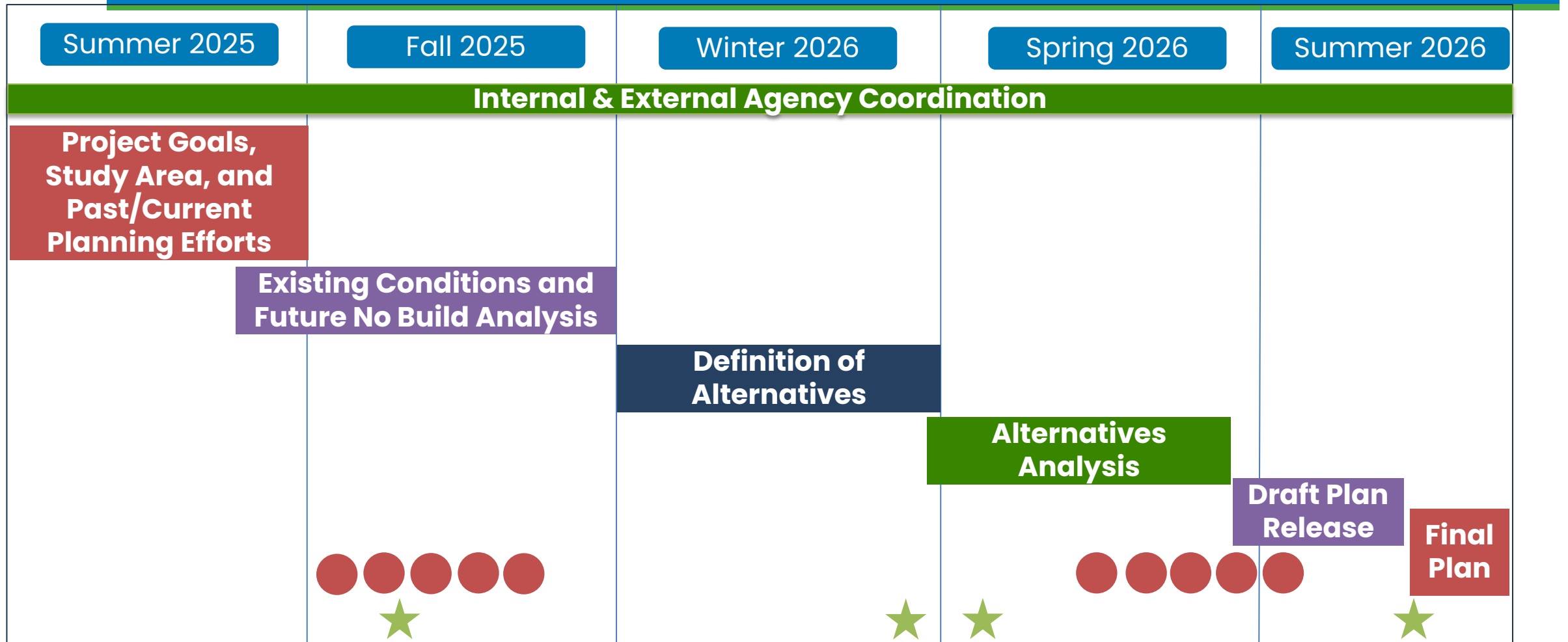


Public meetings



Public engagement

6



# Public Engagement Strategy

7

## Virtual Public Meetings

- Online meetings aimed at sharing project information. Public comments will be accepted, and language services will be provided.

## In-Person Public Meetings and Workshops

- In-person meetings and workshops aimed at sharing project information and collecting public feedback. Language services will be provided.

## Pop-Up Events

- In-person events held at community locations and existing transit locations (i.e.: ferry terminals, rapid transit/commuter rail/bus stations).

## Project Website

- Repository of all project information. The public will be able to view project documents, including meeting materials, and submit comments via a feedback form.

## Project Email Address

- Monitored inbox available for the public to submit questions and comments to the project team.

# Thank You

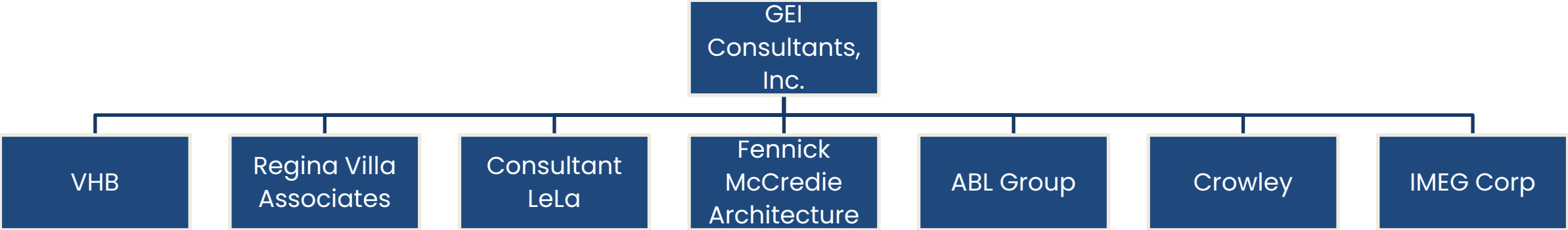




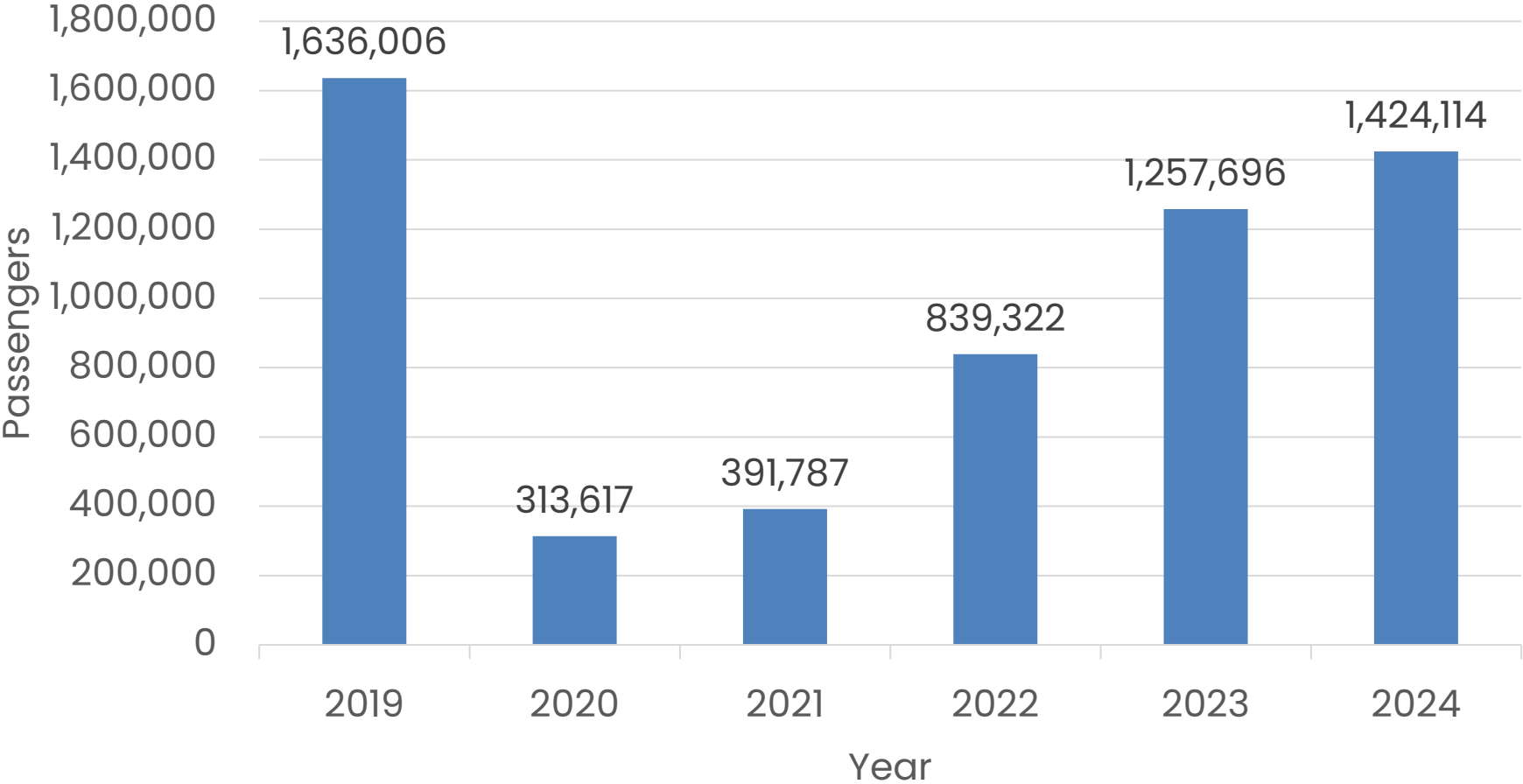
# Appendix

# Study Consultant Team

---



# MBTA Ferry Ridership – continued



# Pre-engineering and Design Work

12

The project team will prepare the preferred alternative for engineering and design via preapplication materials and meetings for Chapter 91, MEPA, and other regulatory requirements as needed.



MBTA ferry, Glory, in the Boston Harbor