



MASSACHUSETTS DEPARTMENT OF
CONSERVATION AND RECREATION

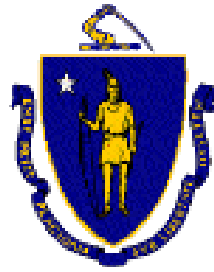
WATERTOWN-CAMBRIDGE GREENWAY PROJECT



DCR Public Meeting – 75% Design

Thursday, June 2, 2016

**Russell Youth Community Center,
680 Huron Avenue, Cambridge**



Commonwealth of Massachusetts

Governor

Charles D. Baker

Lieutenant Governor

Karyn E. Polito

Energy and Environmental Secretary

Matthew A. Beaton

Department of Conservation and Recreation Commissioner

Leo P. Roy



DCR Mission Statement

*To protect, promote and enhance our common
wealth of natural, cultural and recreational
resources for the well being of all*

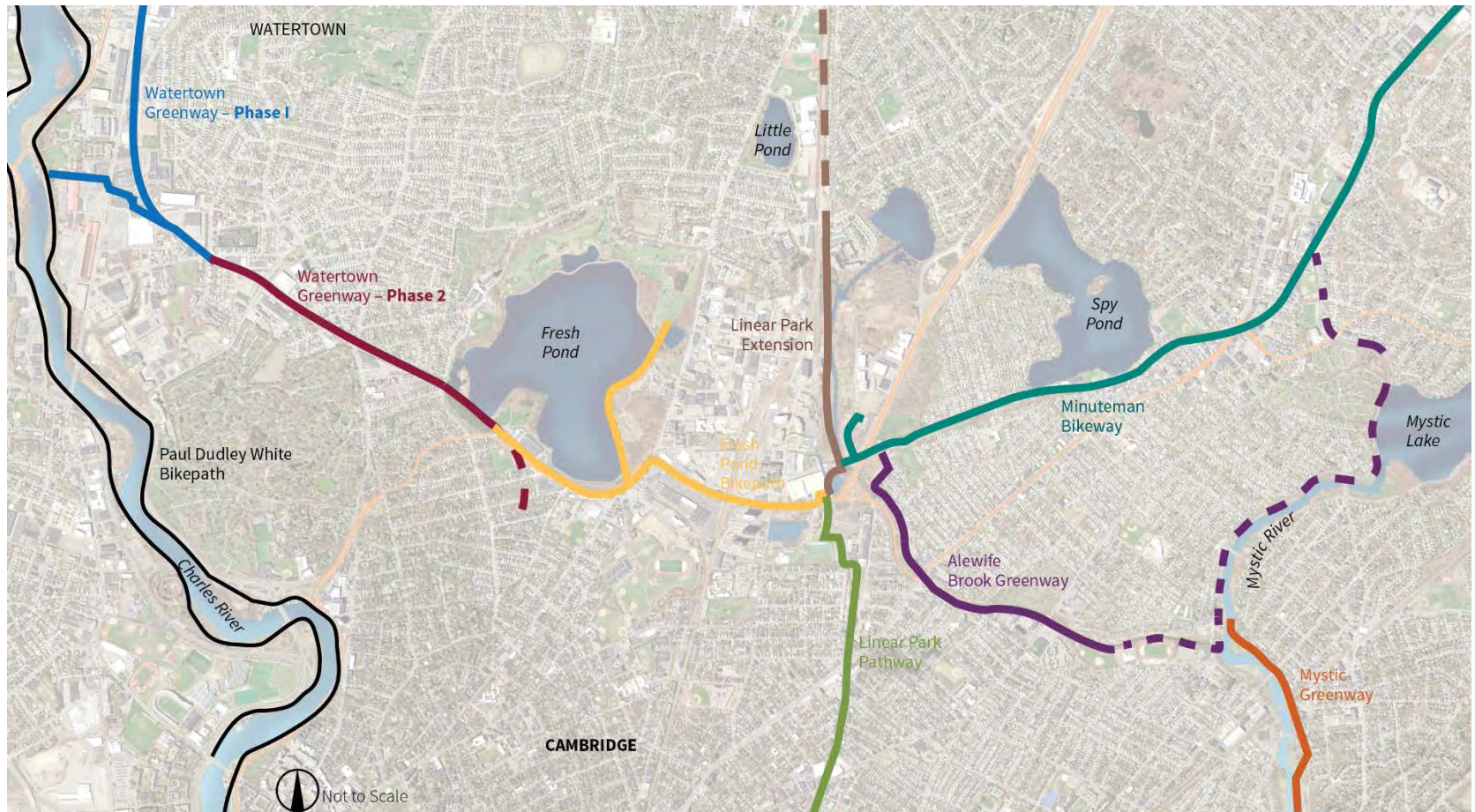
Tonight's Meeting - Purpose

- Present the public with an update on the design process (75% design stage)
- To obtain public input.

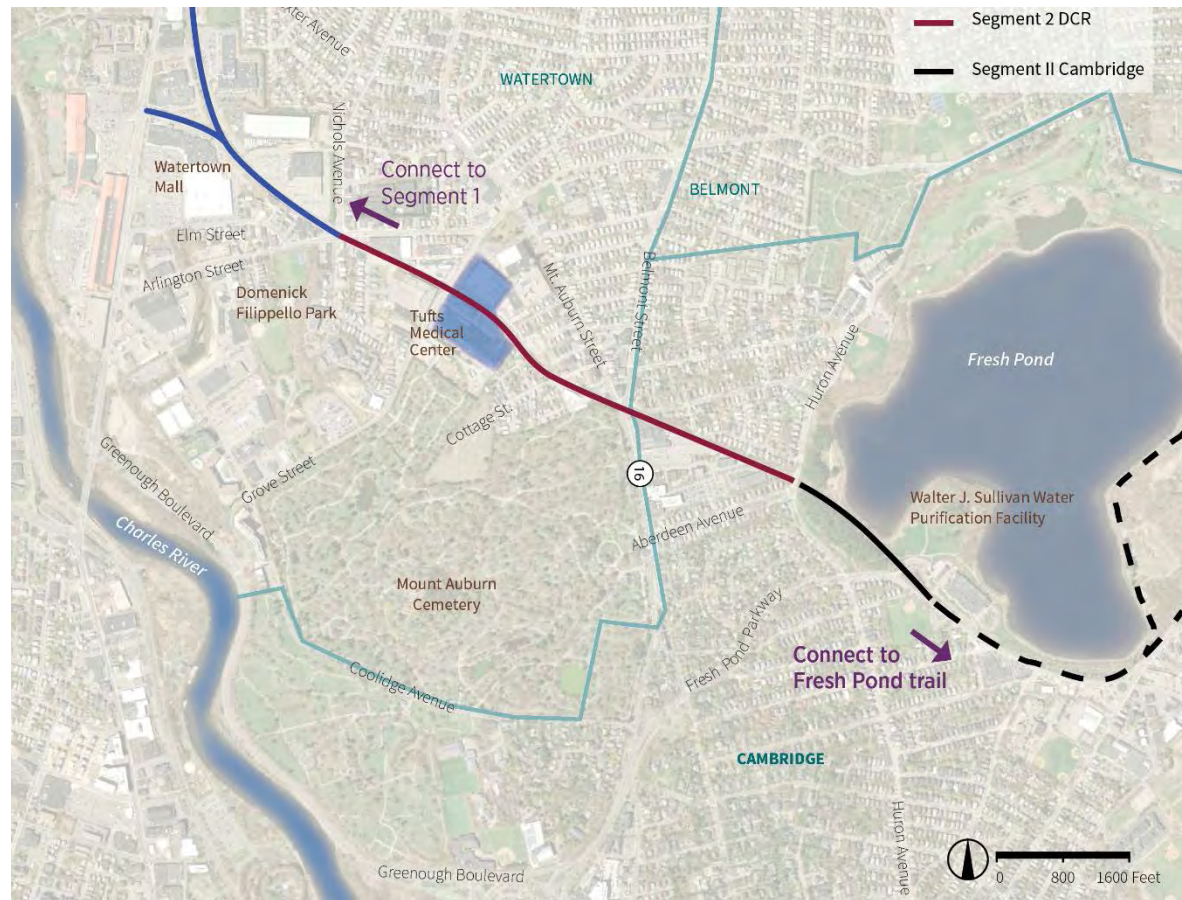
Watertown - Cambridge Greenway Vision

- Creation of a multi-use greenway, using the former B&M railroad right-of-way extending from Concord Avenue in Cambridge, through the Fresh Pond Reservation, under Huron Avenue and Mount Auburn Street and into Watertown.
- Completion of an important regional connection linking the Charles River path system, the Minuteman Bikeway, the Alewife Greenway and the Mystic River Reservation into an interconnected off-road pathway network.

Regional Bicycle Map



Segment 2



- Corridor Acquired (May 2013)
- Cost:
 - Cambridge - \$200,000, DCR - \$1,600,000



Segment 2 Design Funding (Total = \$224,000)

Partnership Contributions (Total = \$90,000)

- Lawrence and Lillian Solomon Foundation
- The Arsenal Project
- Watertown Community Foundation
- Athenahealth
- Anonymous donor

DCR

- DCR Partnership Matching Funds Program (Total= \$90,000)
- DCR Capital Funding (\$44,000)

Project Background

- DCR completes construction of Segment 1 - 2011
(School St to Arlington St)
- DCR & Cambridge acquire Segment 2 (Arlington St
to Fresh Pond Parkway) – May 2013
- Public Meetings
 - June 17, 2015 - Presentation of Conceptual Design &
Public Input
 - Nov 30, 2015 – 25% Design



MASSACHUSETTS DEPARTMENT OF
CONSERVATION AND RECREATION

Design Team



VHB – Greenway
Survey & Design



CRJA – Landscape
Design & Planting

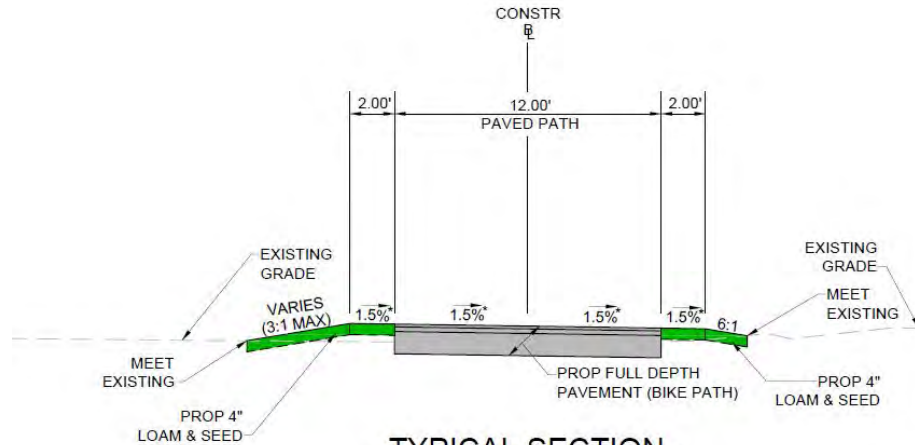


BR+A – Mt Auburn St
Tunnel Lighting

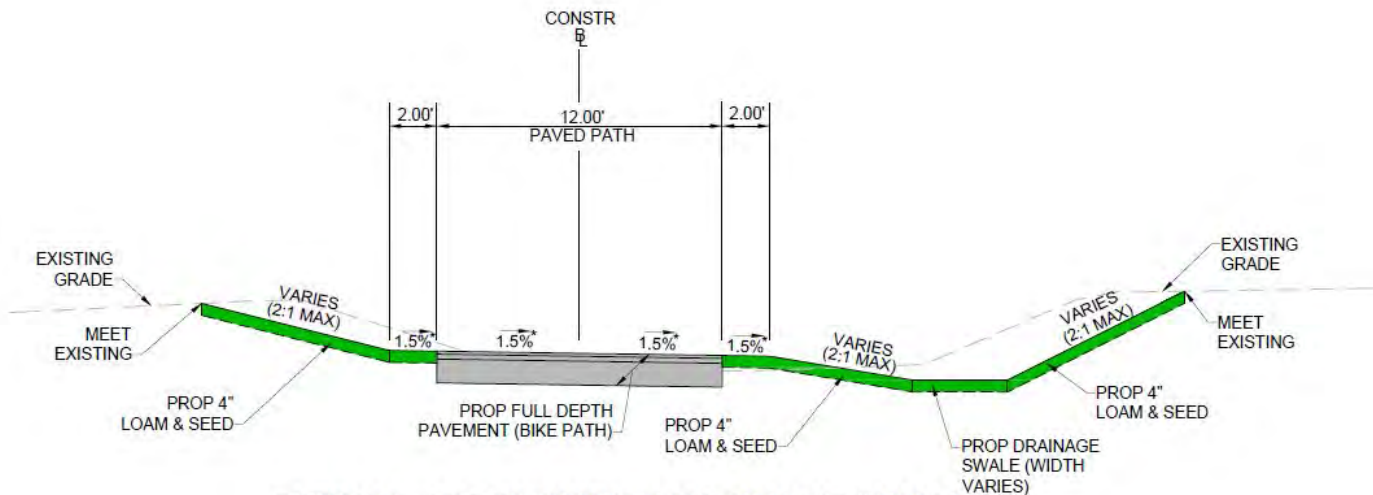
Project Design Elements

- 16 foot wide path (12 feet paved, with two-foot shoulders)
- Multi-use path, ADA compliant
- 3 feet clear width from vertical obstructions
- Grass drainage swales
- Selective vegetation removal, planting, Landscape and interpretive elements (tbd at 75% design)
- Underpass lighting at Mount Auburn Bridge

Project Design Elements



**TYPICAL SECTION -
WATERTOWN/CAMBRIDGE GREENWAY**

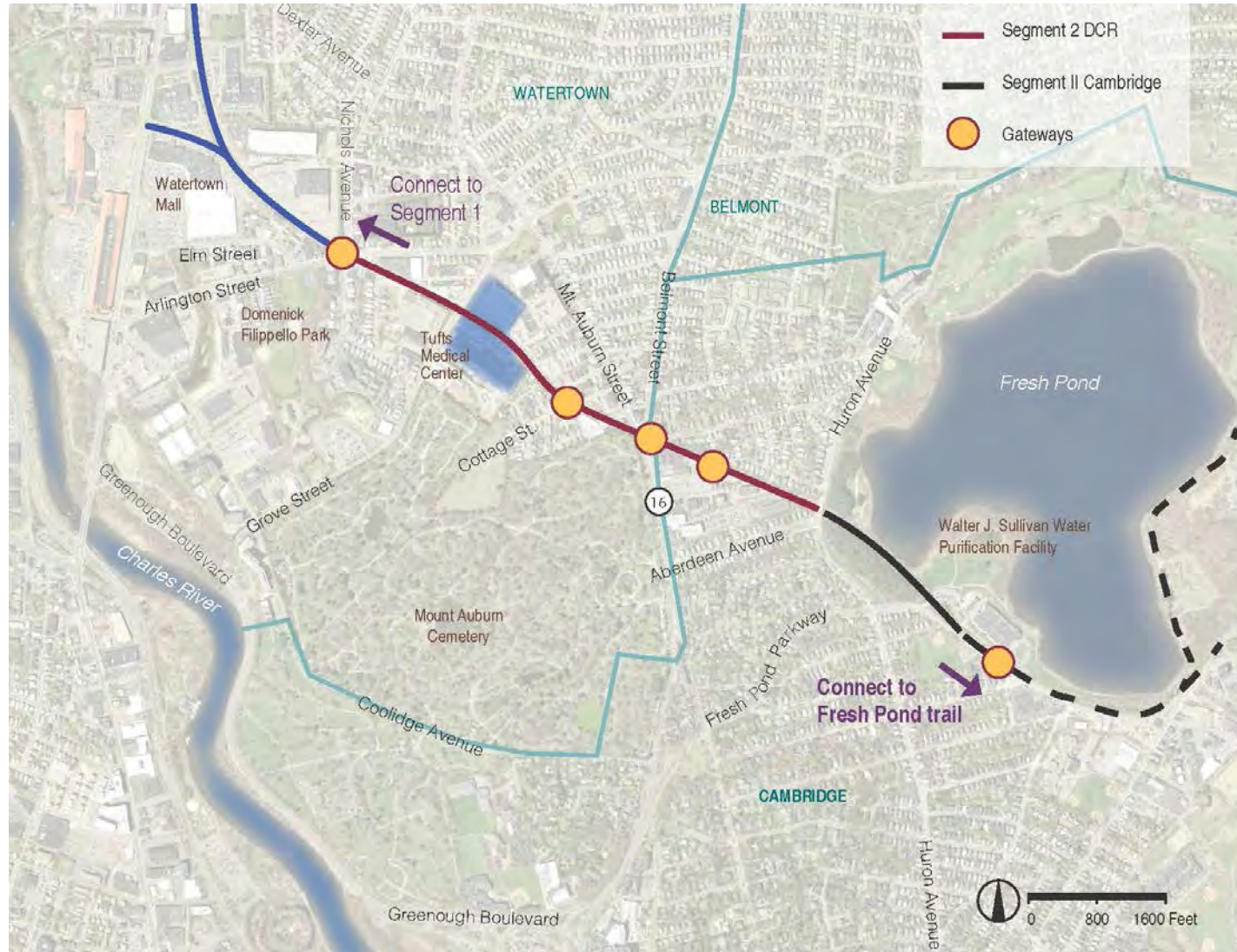


**TYPICAL SECTION WITH DRAINAGE SWALE-
WATERTOWN/CAMBRIDGE GREENWAY**

Project Design Elements

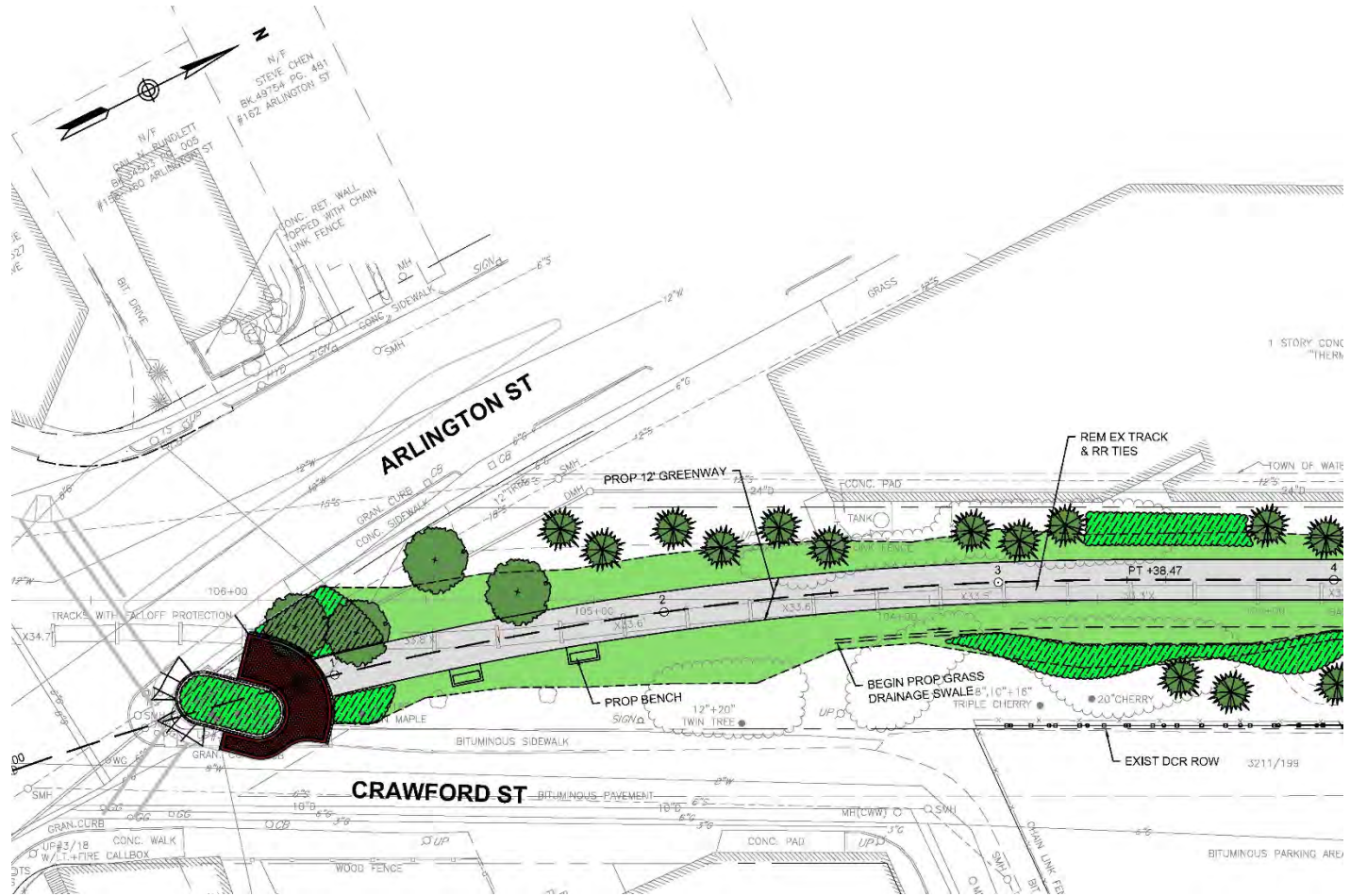


Segment 2 Entrances



Arlington Street





Cottage Street



Cottage Street





MASSACHUSETTS DEPARTMENT OF
CONSERVATION AND RECREATION

Holworthy Street



Holworthy Street



Water Purification Facility Entrance



Water Purification Facility Entrance



Typical Plantings

- Deciduous Trees
 - *Nyssa sylvatica* – Tupelo or Blackgum
 - *Quercus bicolor* – Swamp White Oak
 - *Quercus palustris* – Pin Oak
 - *Ostrya virginiana* – Hophornbeam
 - *Betula nigra* – River Birch



Typical Plantings



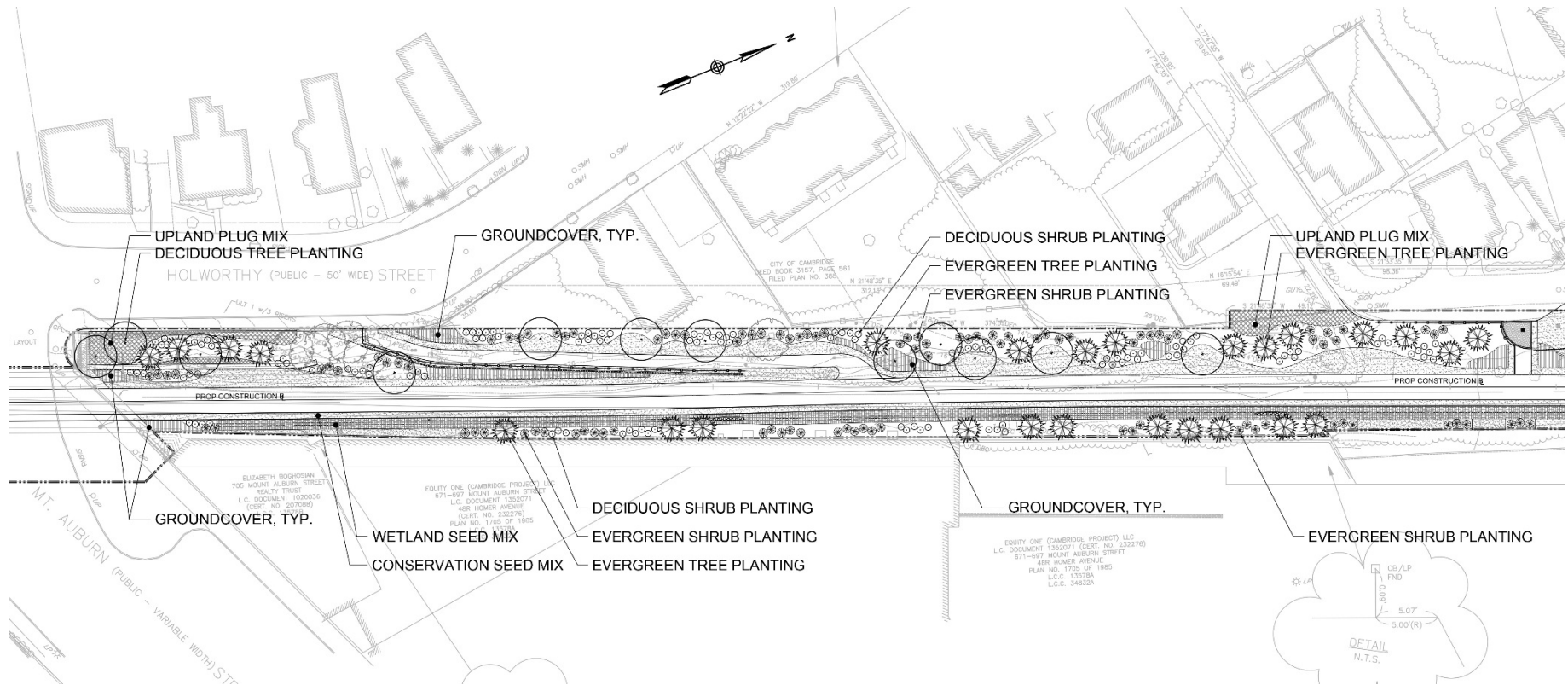
- Evergreen Trees
 - *Pinus rigida* – Pitch Pine
 - *Pinus strobus* – Eastern White Pine
 - *Juniperus virginiana* – Eastern Red Cedar
 - *Picea glauca* - White Spruce

Typical Plantings

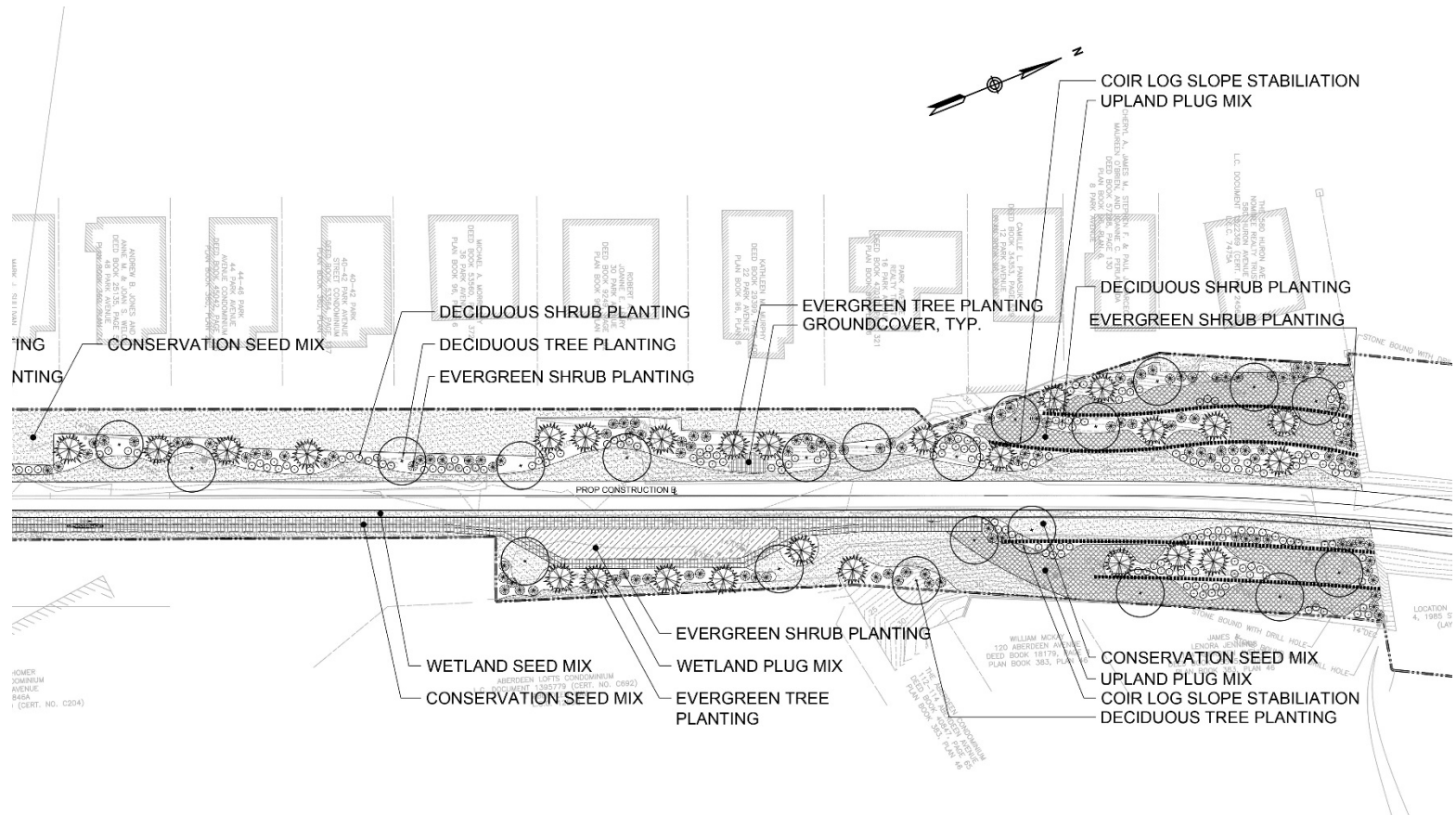
- Shrubs
 - *Cornus amomum* – Silky Dogwood
 - *Cornus racemosa* – Grey Dogwood
 - *Cornus sericea* – Redosier Dogwood
 - *Fothergilla major* – Large Fothergilla
 - *Hamamelis virginiana* – Common Witchhazel
 - *Rhus aromatica* 'Grow Low' - Grow Low Sumac



Project Design Elements – Typical Planting Plan - Holworthy St.



Project Design Elements – Typical Planting Plan - Huron Ave



Slope Stabilization and Stormwater Management



Greenway Amenities



Community Review Process for Design – Summer 2016

- Review by: Cambridge & Watertown Bicycle Committees & Cambridge Pedestrian Committee
- Review and Approval by Watertown through Watertown Planning Department
- Review and Approval by Cambridge Water Board
- Review and Approval by Cambridge Conservation Commission.
- Abutter meeting

Design & Construction Schedule

- State Highway Access permit for Bridges – Summer 2016
- Design scheduled to be completed by Summer 2016
- Environmental permitting: NOI to Cambridge Conservation Commission & PNF to Mass Historic – Summer 2016
- Construction to begin 2017 (pending funding availability – preliminary cost for construction = \$2,100,000)



Additional Information

For more information:

<http://www.mass.gov/eea/agencies/dcr/public-outreach/public-meetings/>

If you have comments or suggestions on this project:

Submit online:

<http://www.mass.gov/eea/agencies/dcr/public-outreach/submit-public-comments/>

Write: Department of Conservation and Recreation
Office of Public Outreach
251 Causeway Street, Suite 600
Boston, MA 02114

Deadline: **Monday, June 20, 2016**

Note: Public comments submitted to DCR may be posted on the DCR website in their entirety.

If you have questions or concerns or wish to subscribe to a DCR general information or project-related listserv: contact DCR's Office of Community Relations at 617-626-4973 or Mass.Parks@state.ma.us.