



www.mass.gov/southcoastrail



South Coast Rail - Phase 1

Briefing for Fall River

North End Neighborhood

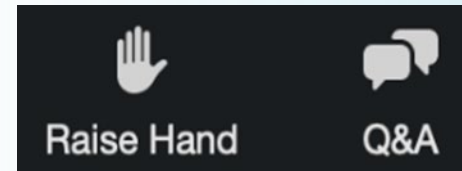
November 23, 2020



**Massachusetts Bay
Transportation Authority**

Q+A after the Presentation

- Please share only one question or comment at a time.
- Press the **RAISE HAND** button to share your question or comment verbally. Wait for the moderator to recognize you and unmute you before speaking.
- Use the **Q&A** button to submit a typed question or comment.



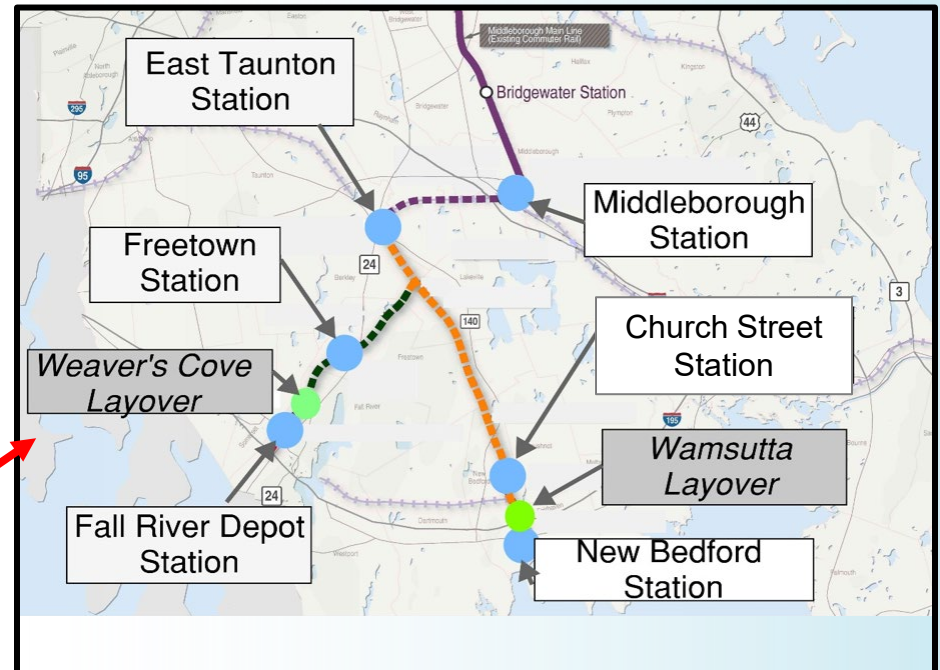
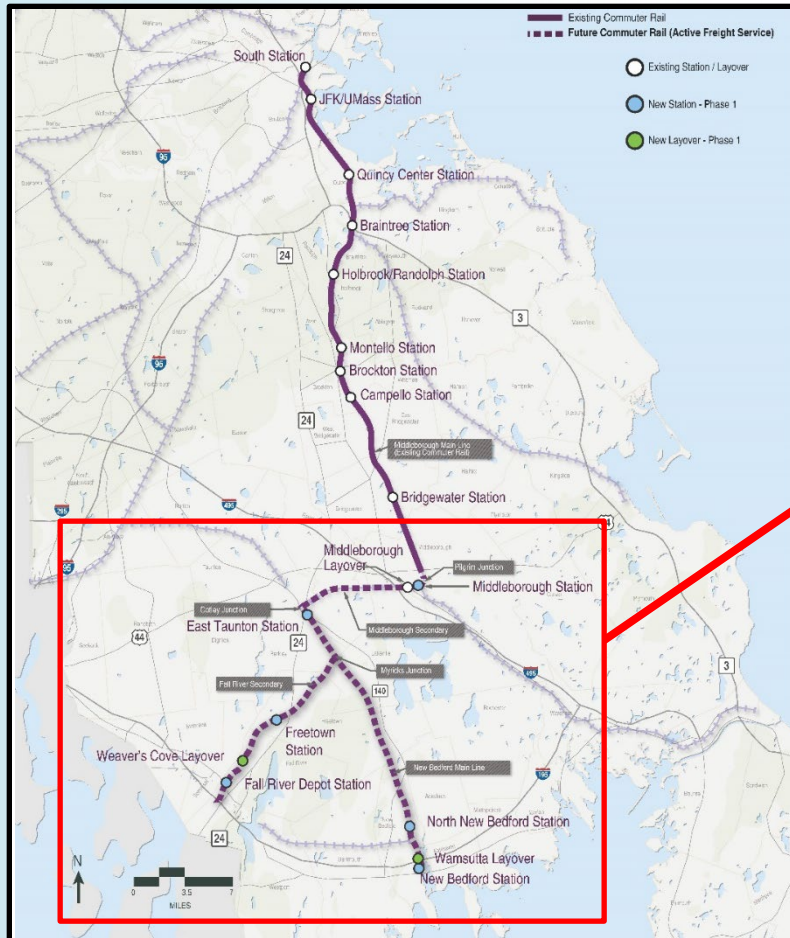
*Tech issues?
Call 508-443-4045*

*If you are joining via phone only, you may press *9 to raise your hand.*

Overview: Project Update

- Phase 1 service is planned for the end of 2023; it is fully funded in the FY20-FY24 Capital Investment Plan
- The MBTA awarded the Fall River line construction package to Skanska DW White JV for nearly \$159M
- The Middleborough Secondary, New Bedford Main Line and Systems contract was awarded to the Joint Venture of South Coast Rail Constructors for \$403.5 million (The Middlesex Corporation and Tutor Perini)
- Construction has begun on the Fall River Secondary and will begin on the New Bedford Line before the end of 2020
- Early action work is nearly complete to prepare the right-of-way and replace 4 railroad bridges

Phase 1 Service



Elements of the Fall River Secondary Package

- 12.1 Miles Track
- 2 New Stations:
Freetown and Fall
River
- 1 Layover, Weaver's
Cove
- 10 Grade Crossings
- 8 Bridges
- 10 Culverts



Freetown Station Rendering

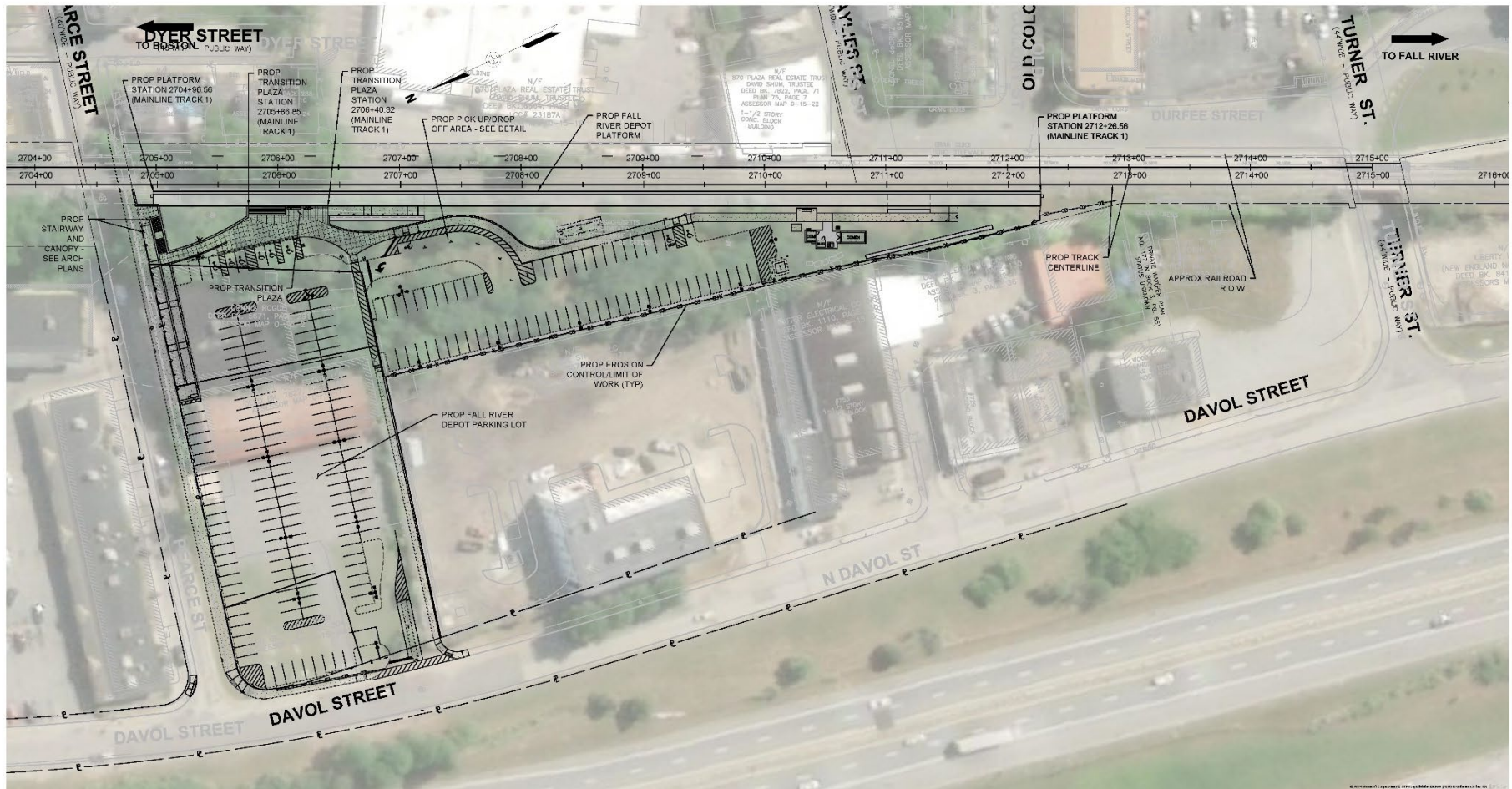
Fall River Depot Station



Fall River Depot

- Located at Route 79 and Davol Street in the vicinity of the historic Fall River Station
- 730-foot high level side platform with 2 canopies between Turner Street and Pearce Street
- Parking: 220 vehicular spaces, 22 bicycle spaces, accessible parking, and EV charging spaces
- Accessible drop-off/pick-up location
- Bus drop off on North Main Street
- Other features include covered benches, fare validators, trash and recycling and storage and utilities

Station Layout



Siting the Weaver's Cove Layover

- Layovers are required at the end of a service line to store trains; they have to be on or near the right-of-way
- MBTA needs sufficient space to store up to six train sets, the right configuration and ability to host service vehicles and support facilities



*MBTA's Greenbush Line
Layover in Scituate*

Site Analysis and Recommendation

- Siting was part of the federal/state environmental process
- The DEIS/R (March 2011) listed 5 sites to examine for Fall River (3) and New Bedford (2)
- Layover Facility Site Selection Report (2012) assessed the three sites for the Fall River Line:
 - ISP Chemical site in Freetown: presented security concerns
 - Weaver's Cove West: loss of tax revenue for the city, size of land taking, impacts to the riverfront and city plans, high risk due to environmental contaminants
 - Weaver's Cove East: least environmental impacts on wetlands and wild and scenic river; less chance of finding hazardous materials
- Fall River meetings, briefings, open houses between 2008 and 2012

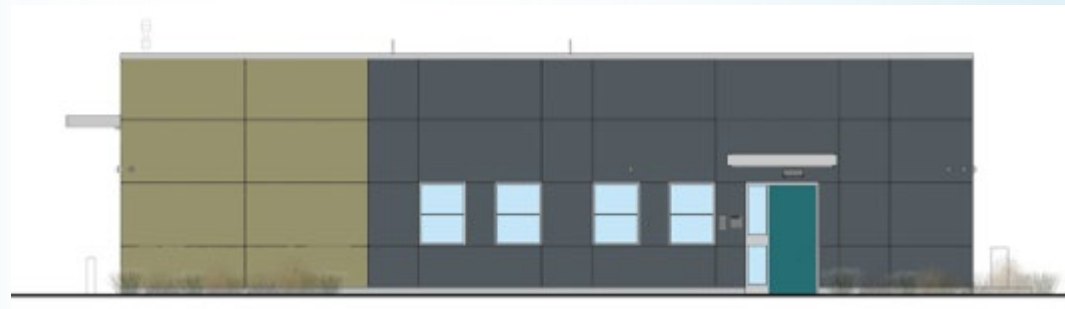
Role of the Layover

- Located at 2680 North Main Street, next to the Fall River Secondary, the main line serving Fall River
- Will store trains overnight between the last trip at the end of each night and the first trip the following day
- Trains are cleaned, fueled and light maintenance is done on site (no major maintenance)
- Crew quarters and parking; no neighborhood parking
- Fenced and secured property, with a locked emergency exit

Weaver's Cove Layover Facility



Rendering of the Crew Building



Operations

- The diesel trains will start and end daily service at the layover facility, so there will be locomotive engine noise when they depart and arrive
- No whistles are required unless there is work or workers on the tracks
- While only light maintenance will occur at the facility, there could be some residual noise from these activities
- When trains arrive at the end of the day, the engines are fully turned off or plugged into a 480kv power source to keep the engines warm during the winter months

Layover Construction

- Contractor must comply with health and safety regulations regarding Covid-19
- Site investigation and clearing nearly completed (removed old tanks and debris); information filed with DEP
- Soils being brought in to help ready the site for the RR tracks; all soils are tested before delivery
- Surcharge and compaction used to prepare area beneath the tracks
- New utilities installed for crew building and other infrastructure

Dust Control at Weaver's Cove

Efforts by the contractor to control dust at Weaver's Cove include:

- Water trucks throughout all work areas
- Applications of hydroseed and stabilizer to stockpiles of loam (recently completed)
- Compacting and smooth-rolling earthwork surfaces
- Maintaining perimeter erosion controls (e.g., silt fences, hay bales, and compost filter tubes)
- Installation of coarse-aggregate materials in truck routes within the Weaver's Site (started 11/12)
- Installation of tracking pads at the site exits (to further limit truck tire tracking of mud onto roadways)
- Street-sweeping on North Main Street

Dust monitoring is also used to confirm these strategies are successful, and to direct focused controls as necessary.

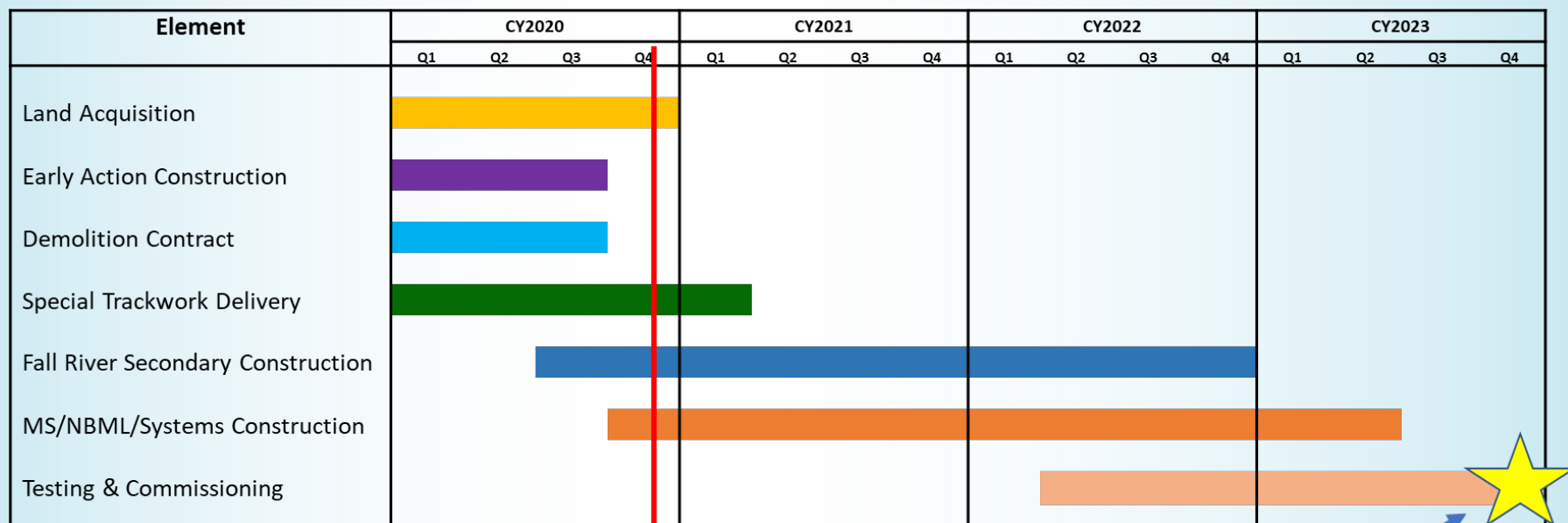
General Construction in Fall River

- Preparation of station and layover sites
- Schedule: Work has begun with earthwork at Weaver's Cove, more to come
- Right-of-Way work will include some track outages (24 hours a day for 3-5 days)
- Some pile driving for linear walls
- SCR Hotline is available for questions or concerns during construction
- Team available to meet with residents, businesses and elected officials during construction

What Else to Expect in Fall River

- Vegetation and tree clearing along the right-of-way for construction and operations
- Survey work along the right-of-way
- Work along the right-of-way, including moving soils, environmental protection, site preparation
- Delivery of rail and supplies along the right-of-way

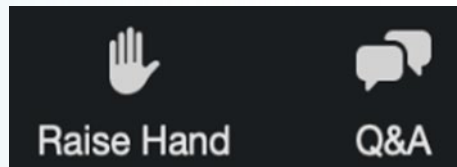
Phase 1 Construction Schedule



Start of Service Goal
(Late 2023)

Q+A

- Please share only one question or comment at a time
- Press the **RAISE HAND** button to share your question or comment verbally. Wait for the moderator to recognize you and unmute you before speaking.



*Tech issues?
Call 508-443-4045*

- Use the **Q&A** button to submit a typed question or comment.
- You may also email southcoastrail@dot.state.ma.us
- Review the **Weaver's Cove FAQ** on the Documents page of the website, www.mass.gov/southcoastrail

*If you are joining via phone only, you may press *9 to raise your hand.*

How to Follow SCR

- Visit the project website and sign up for updates and construction information: www.mass.gov/southcoastrail
- Participate in a virtual public meeting – beginning this fall in SCR communities
- Send us comments at SouthCoastRail@dot.state.ma.us
- To report a construction-related issue on the South Coast Rail project, call the hotline at **774-762-7000**
 - The hotline will be answered Monday-Friday, between 7:00 AM and 3:30 PM (except holidays). Voicemails left outside of these hours will be received on the following 7:00 AM to 3:30 PM weekday shift. SCR responds to all complaints.