

# **Spring 25 Sustainable Materials Recovery Program (SMRP) Grants**

**Tuesday, April 8, 2025**  
**MassDEP Municipal Waste Reduction Branch**



1. Mute yourself during presentations.

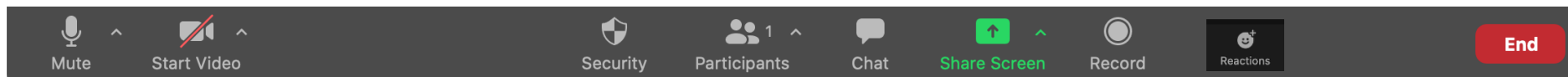
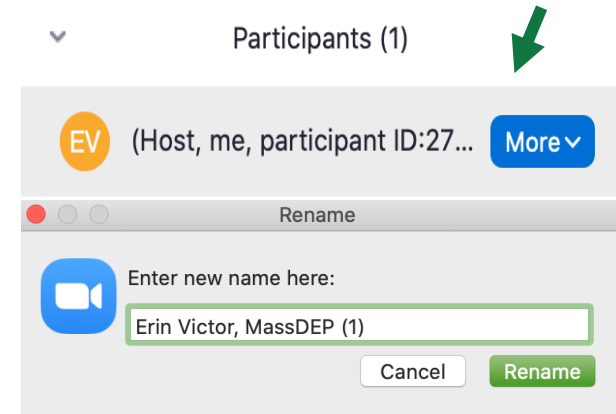
2. Feel free to keep your video on if you don't have a distracting background.

3. Rename yourself.

4. Chat with other attendees & ask questions.

5. We are recording and will share with all.

6. Reactions function can be used to raise your hand.



## Webinar Logistics

# SMRP Grant Team



**Rachel Smith**  
SMRP Intro  
WR/OC/HHW

[Rachel.Smith@mass.gov](mailto:Rachel.Smith@mass.gov)



**Becky Ferguson**  
Cert. Min. Eligibility  
Food Waste Carts

[Rebecca.Ferguson@mass.gov](mailto:Rebecca.Ferguson@mass.gov)



**Micaela Guglielmi**  
Drop-off Equip.  
Regional Small-Scale

[Micaela.Guglielmi@mass.gov](mailto:Micaela.Guglielmi@mass.gov)



**Ron Cochran**  
PAYT Funding

[Ron.H.Cochran@mass.gov](mailto:Ron.H.Cochran@mass.gov)



**Cathy Doodnauth**  
RDP

[Cathy.Doodnauth@mass.gov](mailto:Cathy.Doodnauth@mass.gov)

# Background

- Created through the Green Communities Act
- MassDEP regulations (310 CMR 19.300)
- Municipal waste combustors qualified to earn Waste Energy Certificates (WECs)
- 50% of WECs revenue goes to fund MassDEP approved recycling programs, including staff and grants:
  - [Reduce, Reuse, Repair Microgrants](#) (opens April 15<sup>th</sup>)
  - [Reuse & Recycling Business Development Grant](#)
  - [Waste Reduction Innovation Grant](#)
  - [Sustainable Materials Recovery \(SMRP\) Grant](#)





## Sustainable Materials Recovery Program (SMRP) Grants Spring 2025

Regional  
Small-Scale  
Initiatives

Recycling  
Dividends  
Program  
(RDP)

Pay-as-You-  
Throw  
Programs

Drop-off  
Equipment

Waste Reduction  
Organics Capacity  
HHW Projects

Food Waste  
Carts

# SMRP Over the Years

Year	Total # Grants	Other SMRP Grants	RDP & SS Funding	Total Awarded
2020	302	\$700 K	\$3.2 M	\$3.9 M
2021	266	None This Year	\$3.2 M	\$3.2 M
2022	314	\$750 K	\$3.4 M	\$4.2 M
2023	308	\$1.5 M	\$3.7 M	\$5.2 M
2024	323	\$1.1 M	\$ 3.1 M	\$4.2 M
2025	<b><i>Estimated Budget of \$4.0 – \$4.5 M</i></b>			

# SMRP Grant Evaluation Criteria

- Goals and objectives of the [Solid Waste Master Plan](#).
- Recycling & Solid Waste Survey
- RDP Spending Report – including funding balances
- Responses to questions in the Grant Application
- Demonstrated need, ability to implement, likelihood of success
- Past grant performance/compliance
- Located in an Environmental Justice community

\* Each Grant Category may include additional evaluation criteria.

# What is New for Spring 2025?

- Drop-off Equipment – added 4 new categories
- FW Carts – updated funding amounts, added drop-off option (above)
- PAYT – added option for every-other-week trash collection
- RDP – removed textile category, added options for organics, revamped reuse section, added performance requirements for PAYT
- RDP dedicated account = REQUIRED
- Q&A Process – [online form](#), questions must be submitted by May 5<sup>th</sup>
- Application Deadline – June 2<sup>nd</sup>
- Note: For Spring 2026 = EPP Policy will be REQUIRED

# Grant Process – Public Q&A

- All questions must be submitted in writing using this online form:  
<https://forms.office.com/g/YrCCXDHc3a>
- Question period opened April 1<sup>st</sup> and closes on May 5<sup>th</sup> at 5:00 PM
- Official responses will be posted no later than May 12<sup>th</sup>  
[www.mass.gov/how-to/apply-for-a-sustainable-materials-recovery-program-smrp-municipal-grant](http://www.mass.gov/how-to/apply-for-a-sustainable-materials-recovery-program-smrp-municipal-grant)





# Minimum Eligibility Requirements

Becky Ferguson  
[Rebecca.Ferguson@mass.gov](mailto:Rebecca.Ferguson@mass.gov)

# Early Submission Requirements and Deadlines

2024 RDP Spending Report

2024 Recycling and Solid Waste Survey

FY25 Notification of Buy Recycled Policy

Deadline  
February 15

# Minimum Eligibility Requirements

## The Certification Form Has Four Sections to Complete:

- ✓ Annual Notification of Buy Recycled Policy (NBRP)
- ✓ Municipal Recycling Data Reporting
- ✓ Waste Ban Compliance
- ✓ Other Compliance Issues

The screenshot shows a web application interface for the MassDEP Municipal Recycling Programs. At the top, there is a navigation bar with links for Members, Responses, Search, Status, File Uploads, Analytics, and an Advanced dropdown menu. Below this is a header section with the MassDEP logo and the text "Program: MassDEP Municipal Recycling Programs" and "AAAWilltest". A "Responses" tab is active, showing a "Certification Of Minimum Eligibility Criteria" for "AAAWilltest - Annual | 2024". A button labeled "New Response for: AAWilltest" is visible. The main content area is titled "Sustainable Material Recovery Program-Municipal Grant Application" and contains text about the SMRP funding and application process. A link for "Applications must be submitted via Re-TRAC Connect by 11:59pm on June 12, 2024." is provided. An "Overview" section states that grantees must comply with eligibility criteria. At the bottom, a "Status" dropdown is set to "Draft", and a "SAVE" button is present. The first section of the form, "1. Annual Notification of Buy Recycled Policy", is partially visible at the bottom.

# Notification of Buy Recycled Policy

- **Municipal Buy Recycled Policy on record**
- **Annual email or memo from the Town or City CEO** (Mayor, Selectboard, Town Manager) dated within the **Fiscal Year** Sent to **department heads** and staff, with **Actual Buy Recycled Policy** attached.

Authorized by the Board of Selectmen – April 7, 1997

The Town of Norwood "Buy Recycled" policy promotes a preference for the purchase of recycled products in lieu of non-recycled products, whenever they are readily available at the same quality and price. In order to meet state and federal standards, paper products shall be no less than 30% post-consumer recycled.

Special Town Meeting: November 1988

ART: 70 To see if the Town will vote to require all Town Departments to purchase and use recycled paper to the fullest extent possible, or do or take any other action in this matter. On request of the Recycling Committee.

VOTED: Article 70 as printed passed on Wednesday November 2, 1988, a majority vote, a quorum being present.

Policy # 1-2-3

Adoption Date: August 7, 1997

Purpose: To encourage purchases of recycled products instrumental in recovery of additional state funding.

Revision Date(s): July 21, 2004

Policy: To buy recycled products except when cost is greater.

# Environmentally Preferable Products (EPP) Procurement Policy

- **Reduce waste**
- **Support recycling markets**
- **Conserve natural resources** such as and water through purchasing energy-efficient products and increasing use of renewable energy such as solar or wind
- **Minimize environmental impacts** from pollution, including greenhouse gases reduce use of products with toxins that pose a significant threat to the environment and/or public health.
- **Prioritize reuse** by choosing products that are reusable, recyclable, compostable, made with recycled content or by identifying alternate options to new products.



# EPP Resources

- [Additional Information about the Massachusetts Operation Services Divisions' Environmentally Preferable Products Procurement Program](#)
- [Massachusetts Environmentally Preferable Products and Services Guide](#)
- [EPA's Environmentally Preferable Purchasing Program](#)
- [EPA's Guidance for Institutional Purchasers of Greener Products and Services](#)
- [Energy Saving Resources through Mass Save](#)
- [Product Stewardship Institute](#)
- [Stop Waste Sample EPP Model Policy](#)
- [Responsible Purchasing Network Policies](#)
- [Sustainable Purchasing Leadership Council Guide to Getting Started](#)

# EPP Requirement

- Effective Grant Year 2026. Due the end of June 2026.
- MassDEP will provide Guidance, including Template Language, and Model Policies.
- Will be a requirement to apply for SMRP Grants, replacing the NBRP.
- Passed via vote of leadership body and filed with the Municipal Clerk.



# Food Waste Collection Carts

Becky Ferguson  
[Rebecca.Ferguson@mass.gov](mailto:Rebecca.Ferguson@mass.gov)

# Food Waste Collection Carts Grant

- Reimbursement will be \$25 per household, up from \$20/HH, including cart and labels.
- **Changes:**
  - No longer separate funding of \$2/cart for the required in-molded labels.
  - No pilot program funding.
  - Food drop-off equipment available through the drop-off equipment grant.
- Maximum award amount: \$125,000
- Vendors available on [FAC113](#)



Courtesy Cambridge Works Announcement

# Food Waste Carts Implementation Plan

Municipality's Implementation Plan must include:

- Start date of the program (within 12 months)
- Minimum two-year duration
- Description of the program – # of HHs participating, method of cart distribution, contracted hauler, and permitted composting facility where material is tipped
- Explanation of how program will be financed
- Explanation of steps remaining to implement the program

## FREE CURBSIDE COMPOSTING

**STARTING JULY 1, 2024!**

**GO GREEN Medford**  
A program of the City of Medford, OR

• New curbside program **funded by the City**  
• **FREE** for eligible residents, opt-in required  
• **Compost ALL food scraps**, paper towels, and other compostable items  
• **Weekly service** on your trash day  
• **Animal-proof** locking bins  
• Say goodbye to stinky, wet trash bags!  
• Help protect the future of clean air, water and soil  
• Access finished compost for use in plants and gardens!



**REGISTER YOUR ADDRESS:**  
[medfordcomposts.com](https://medfordcomposts.com)

*Did you know?*  
**One-third to half** of household trash is made up of food scraps and organic waste.  
**One household composting for three years can divert up to ONE TON** from the waste stream!  
*Sign up and help Medford reach its Sustainability Goals!*



**Accepted Items:**

YES	NO
✓ bread, pasta, rice, grains	✗ plastic
✓ coffee grounds & filters	✗ baby wipes
✓ compostable serveware	✗ hand wipes
✓ dairy products	✗ cat litter
✓ eggshells, seafood shells	✗ diapers
✓ fats, oils, greases	✗ glass & metals
✓ fruit & veggie scraps	✗ medicines
✓ meat, bones & fish scraps	✗ pet waste
✓ paper napkins	✗ styrofoam
✓ wooden stirrers	✗ rubber bands
✓ tea bags	✗ yard waste

**How This Program Works**  
Residents need to sign up to participate. **To be eligible**, residents must live at an address with four units or fewer. Each unit should sign up separately to receive their own 12-gallon curbside bin. **2024 enrollment is limited**, but will be expanded each year until all eligible households can participate.

- 1. Line Your Bin:**  
Use a brown paper bag or certified compostable bag (BPI, CMA or OK Compost certified). **PLASTIC BAGS MAY NOT BE USED AS LINERS.**
- 2. Collect Your Food Scraps:**  
Avoid contamination by only throwing compostable materials in your bin.
- 3. Place Bin Curbside For Pick Up:**  
Make sure your bin is placed curbside for your regular weekly trash day.

**Still have questions? This service is provided by**  
**Garbage to Garden**  
Please call Customer Service at Garbage to Garden (617) 977-4547 or visit:  
**[medfordcomposts.com](https://medfordcomposts.com)**



# Food Waste Cart Evaluation Criteria

- **Readiness** to implement the project, including a plan for outreach and education.
- Demonstrated understanding of the **steps to implement** the proposed program.
- Ability and willingness to **use RDP funds** to offset program costs.
- Located in an **environmental justice population**.
- [Details: Food Waste Carts](#)

# Drop-off Equipment

Micaela Guglielmi

[Micaela.Guglielmi@mass.gov](mailto:Micaela.Guglielmi@mass.gov)

# Drop-off: Food Waste Collection Equipment

- Target: Food Waste
- Reimbursement up to \$3,000 per site, maximum 4 sites for \$12,000
- Must be on municipal property
- Eligible use of funds includes:
  - Collection systems: carts, dumpsters, public containers, etc. (required)
  - Certified compostable liner bags
  - Kitchen countertop containers
  - Outreach and education material



# Drop-off: Paint Shed

- Target: Oil-based paints, varnishes, and stains
  - Latex paint is not hazardous and can be dried out and trashed, or collected for reuse
- Reimbursement up to \$5,000 for shed or other enclosed, weather-proof structure





# Drop-off: Cardboard Compactor

- Target: Cardboard
  - Old Corrugated Cardboard (OCC) only.  
Not intended for mixed paper.
- Reimbursement up to \$10,000 for a compactor to flatten OCC for more efficient recycling.





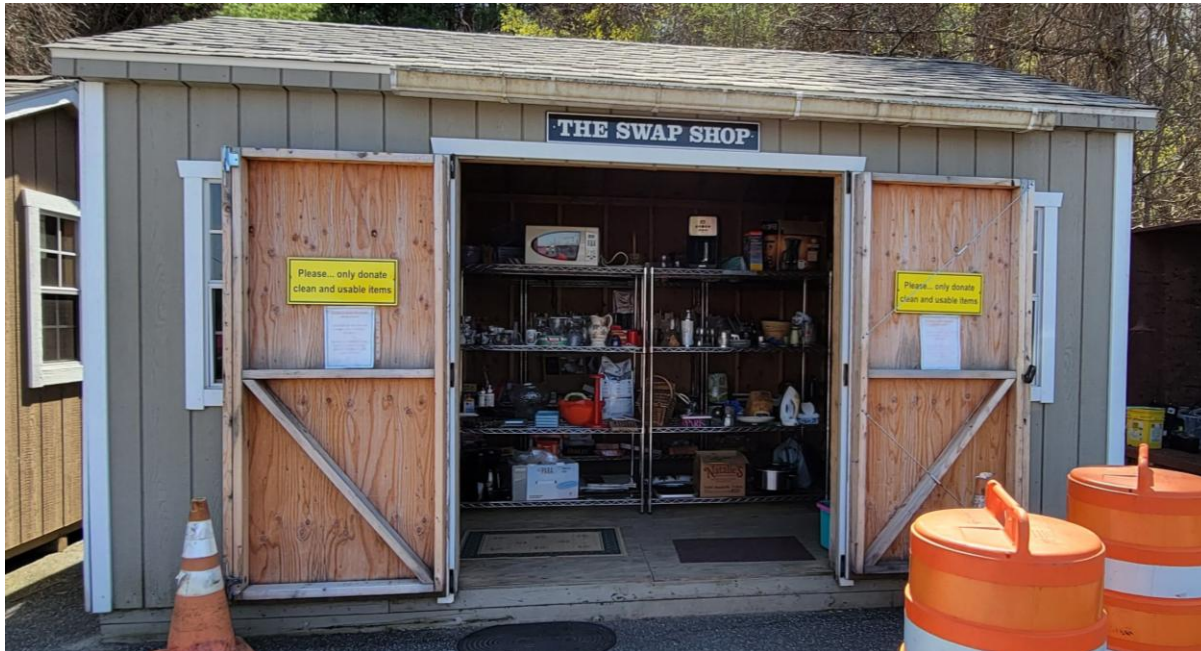
# Drop-off: Glass Container

- Target: Source-separated Recyclable Glass
- Reimbursement up to \$8,000 for 20- or 30- CY Open Top Roll-Off
  - Required to purchase a heavy-duty container
  - Grant funds may also be used towards purchase of a gable top.



# Drop-off: Reuse Swap Shop

- Target: Reusable home goods and furnishings.
- Reimbursement up to \$6,000 for a shed or other enclosed weatherproof structure.





# Drop-off: Universal Waste Shed

- Target: Universal waste (U-waste)
- Reimbursement up to \$5,000 for a shed or other enclosed, weatherproof structure
- Materials for collection include:
  - Fluorescent lamps
  - Certain batteries (button-cell)
  - Other mercury containing devices (thermostats, thermometers, etc.)
- [Municipal Waste Combustor Partnership](#)



# Drop-off Equipment Summary

- Can apply for up to **two** equipment categories, but it's a one-time grant once awarded.
- Collectors and processors of universal waste, paints and other HHW available on State Contract [FAC110](#)
- Drop-off equipment including sheds, compactors, bins, etc. available on State Contract [FAC113](#)

# Drop-off Equipment Evaluation Criteria

- Facilities that are open to residents, non-resident visitors, and businesses.
- Identified a market for the target material(s).
- Enforce a prohibition on trash disposal of the target material(s).
- For cardboard compactors and glass roll offs – the amount of the target material (i.e., tonnage) captured for recovery and recycling.
  - The more material you divert from the waste stream, the better.
- [Details: Drop-off Equipment](#)



# Regional Small-Scale Initiatives

Micaela Guglielmi  
[Micaela.Guglielmi@mass.gov](mailto:Micaela.Guglielmi@mass.gov)

# Regional Small-Scale Initiatives

Regional  
groups only

Population  
based

Same  
spending as  
RDP

[Details: Regional Small-Scale Initiatives](#)



# Regional Small-Scale Initiatives Awards

<b>Population</b>	<b>MassDEP Funds</b>
<b>Up to 15,000</b>	<b>\$1,000</b>
<b>15,001 – 25,000</b>	<b>\$1,250</b>
<b>25,001 – 50,000</b>	<b>\$1,500</b>
<b>50,001 and Above</b>	<b>\$2,000</b>



# Pay-As-You-Throw (PAYT) Program Assistance

Ron Cochran

[Ron.H.Cochran@mass.gov](mailto:Ron.H.Cochran@mass.gov)

# Why PAYT?

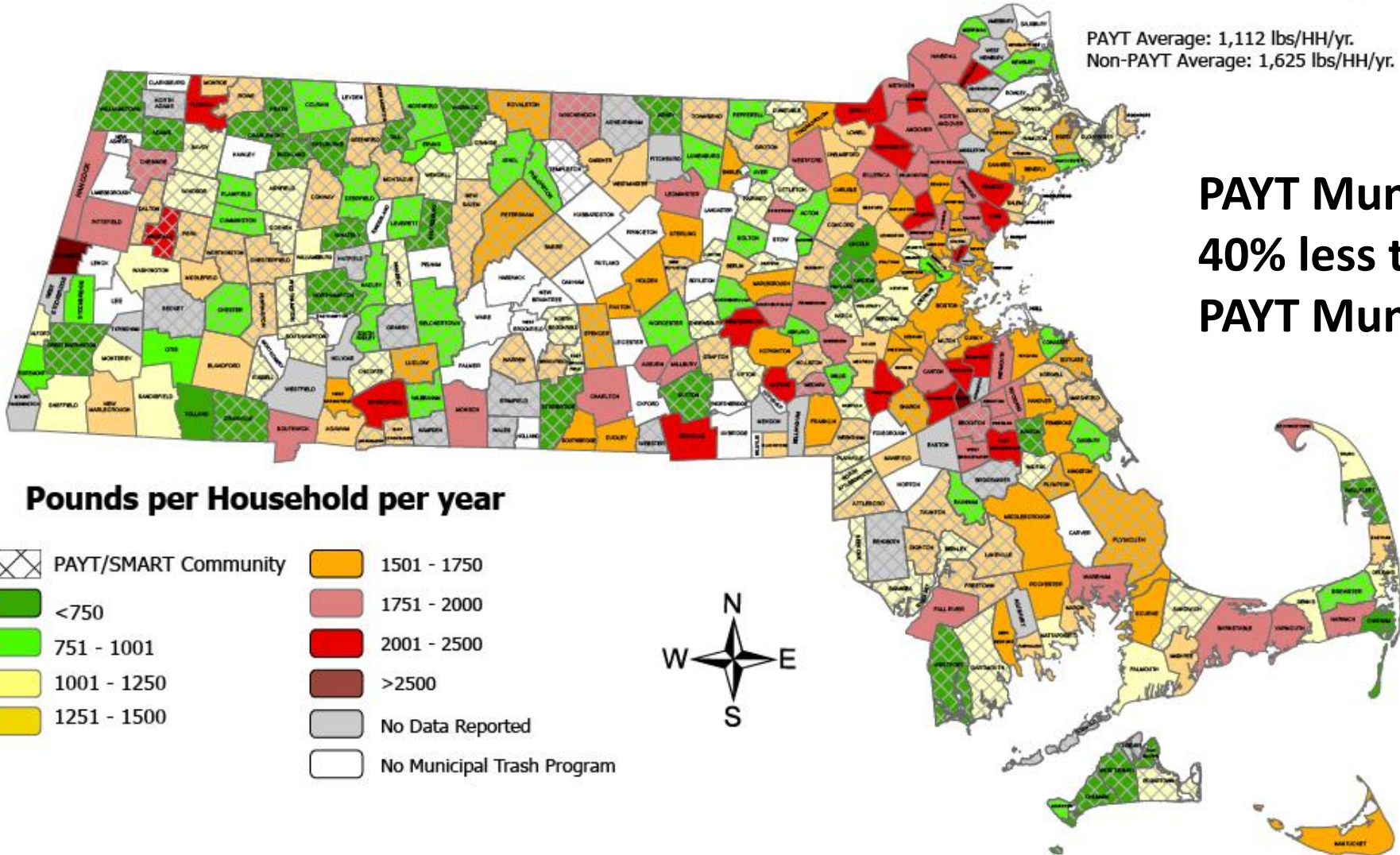
- Single most effective tool to lower waste while increasing Reduce, Reuse, Recycle and other diversion behaviors
- Equitable – like utilities, you pay for what you use
- Environmental benefits – reduces trash sent to landfills and incinerators, which reduces emissions and produces less waste overall
- You're in good company – nearly half of Massachusetts already has PAYT
- Municipal budget savings as a result of avoided disposal costs
- Creates a way to insulate city budgets from rising hauler costs without increasing other taxes
- Earns Recycling Dividend Program points = More grant funding!

# How Much Trash Did We Throw Out in 2023?



PAYT Average: 1,112 lbs/HH/yr.  
Non-PAYT Average: 1,625 lbs/HH/yr.

**PAYT Munis averaged  
40% less trash than non-  
PAYT Munis.**



# PAYT For Your Community

## Already have PAYT?

- Think about ways to sustain or grow the program
- Is your trash tonnage going down, leveling or going up?
- Grants available to upgrade an existing program

## Looking to adopt PAYT?

- First educate yourself on the topic, then spread the word to stakeholders and community members
- Run the numbers and forecast the impact to both budget and environment
- Always be somewhere on the path to PAYT

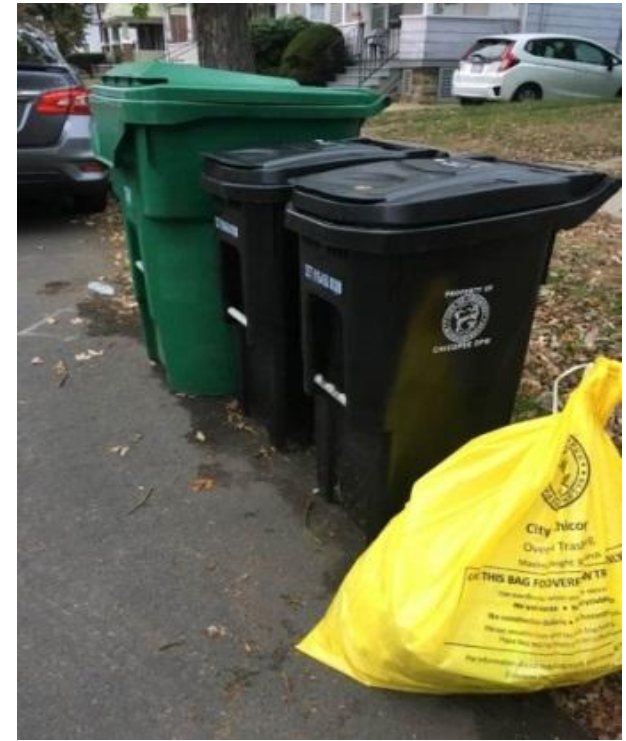
# PAYT Technical Assistance (TA) Grant

- 80 hours dedicated [in-kind technical assistance](#) from your MAC
- Provide background information on comparable PAYT communities
- Set up site visits at communities with PAYT programs
- Provide financial analysis of PAYT and variations under consideration
- Attend public meetings and forums
- Provide support for public outreach materials such as FAQ documents and PPT presentations
- Help develop Draft Implementation Plan



# PAYT Grant Program

- Available for both new PAYT programs and program upgrades.
- Funding is dependent on type of program and # of HHs served. Maximum of \$300,000.
- Grant funds may be used to fund the cost of bags, <35-gallon trash carts, outreach/education materials, program coordinator, and other approved expenses.
- [Details: Pay-As-You-Throw \(PAYT\) Programs](#)





# PAYT Grant Program

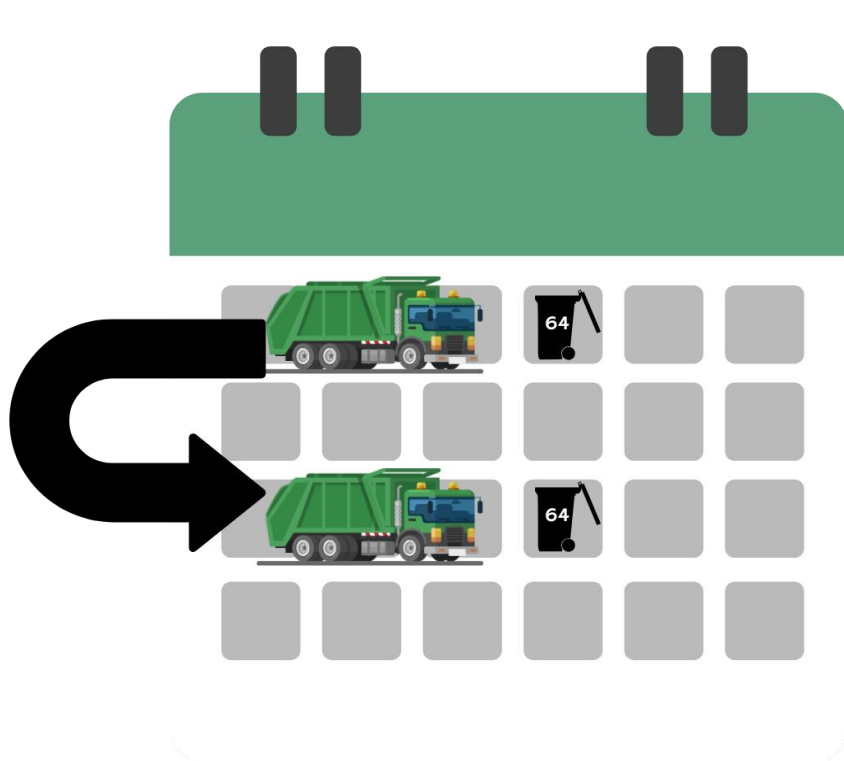
- **New Drop-off PAYT Program = \$10 per HH**
- **New Curbside PAYT Program**
  - One bag/barrel free (e.g., hybrid program) = \$10 per HH
  - No bags/barrels free (e.g., full PAYT w/ bags) = \$20 per HH
  - One 35-gallon trash cart = \$30 per HH
  - One 64-gallon trash cart collected every other week = \$10 per HH
- **Updates to Existing PAYT Program**
  - Convert from 1 bag/barrel free to Full PAYT = \$5 per HH
  - Transition from a sticker program to a bag program = \$5 per HH
  - **One 64-gallon automated trash cart, collected every other week = \$5 per HH**
  - Provide automated trash carts of <35-gallon capacity = \$30 per HH



NEW

# Highlighting a Notable Change in 2025

- \$5 Per Household for municipalities with one 64-gallon automated trash cart, collected **every other week**



# Getting Ready to Apply

- Applicants MUST have submitted and have been approved for a [Technical Assistance Grant](#) for PAYT.
- Applicants that are full PAYT (all bags/tags/stickers) MUST have a [municipal bylaw/ordinance/regulation](#) requiring private haulers to provide integrated trash and recycling services.

# Looking to Dive Deeper?

Watch our previous webinars



**In depth webinar on PAYT for new communities looking to adopt.**



[PAYT Explained https://www.youtube.com/watch?v=a8OaW30TFHU](https://www.youtube.com/watch?v=a8OaW30TFHU)



**Tune up for your community's existing PAYT program.**



[PAYT TuneUp https://www.youtube.com/watch?v=1xF-5Pp1yWc](https://www.youtube.com/watch?v=1xF-5Pp1yWc)



# Questions?

# Recycle Smart MA Poll

Option 1



Option 3



Option 2



Option 4



# Recycling Dividends Program (RDP)

Cathy Doodnauth  
[Cathy.Doodnauth@mass.gov](mailto:Cathy.Doodnauth@mass.gov)



# RDP Background

- Maximize waste reduction through reuse, recycling, and composting
- 10 categories, 22 points available
  - Point values range from 1-5 depending on the activity's impact on waste reduction and its level of effort to implement
- Programs claimed must be implemented or in effect during FY25 from July 1, 2024, through June 30, 2025.
- Links provided in application must go directly to the municipal website

[Details: Recycling Dividends Program](#)

# RDP Payment Brackets

Number of Households with Municipal Trash Service	Basic Level 1-9 pts.	Advanced Level ≥ 10 pts. & RDP EJ Populations
0 - 4,999	\$420	\$600
5,000 - 7,499	\$770	\$1,100
7,500 - 9,499	\$910	\$1,300
9,500 - 12,499	\$1,260	\$1,800
12,500 - 16,999	\$2,100	\$3,000
17,000 - 24,999	\$2,450	\$3,500
25,000 - 31,999	\$2,800	\$4,000
32,000 - 99,999	\$4,550	\$6,500
100,000 +	\$7,000	\$10,000

# RDP Environmental Justice Populations

**45 Percent** or more residents live in an [EJ Census Block Group](#) that meets combined criteria for either:

- 1) Minority population (b.) AND Income (“**MI**”) components OR
- 2) Minority population (a. or b.), Income, AND English isolation (“**MIE**”) components

## **Minority Population (“M”):**

- a. Minorities make up 25% or more of the population and the annual median household income of the municipality in which the neighborhood is located does not exceed 150% of the statewide annual median household income, OR
- b. Minorities make up 40% or more of the population regardless of the income of the municipality.

## **Income (“I”):**

The annual median household income is not more than 65% of the statewide annual median income.

## **English Isolation (“E”):**

25% or more of households include no person over the age of 14 who speaks English very well.

# RDP Environmental Justice Populations

Amherst	Chelsea	Greenfield	Lynn	Norwood	Saugus	Waltham
Ashland	Chicopee	Haverhill	Malden	Oak Bluffs	Somerville	Watertown
Ayer	Clinton	Holbrook	Marlborough	Pittsfield	Southbridge	Webster
Boston	Everett	Holyoke	Medford	Quincy	Springfield	West Springfield
Braintree	Fall River	Lawrence	Methuen	Randolph	Sunderland	Westborough
Brockton	Fitchburg	Leominster	Milford	Revere	Taunton	Woburn
Brookline	Framingham	Lowell	New Bedford	Salem	Tisbury	Worcester
Cambridge	Gardner					

# Spring25 RDP Categories

- Bulky Items
- Center for Hard to Recycle Materials (CHARM)
- Curbside Recycling Regulations
- Diversity, Equity, and Inclusion (DEI) in Recycling Programs
- Household Hazardous Waste
- Organics / Food Waste
- Recycling Center Access
- Reuse Programs
- Solid Waste Reduction
- ~~Textile Recovery Initiatives~~
- Waste Prevention Outreach and Education

# Bulky Item Collection

- Minimum of \$5 charged for at least 3 of the listed items – 1 Point
  - Upholstered furniture
  - Wooden furniture
  - Toilets
  - Sinks
  - Carpet





### **Other Bulky Wastes**

Bookcases, end tables, kitchen/dining tables, and wooden chairs.	\$10.00
Bureau	\$15.00
Carpet or area rug up to 10x10	\$10.00
Carpet (larger: up to 12x20)	\$20.00
Carpet padding	\$5.00
Couch	\$20.00
Futon	\$15.00
Mattress or box spring	\$35.00
Recliner chair, loveseat	\$15.00
Sink, toilet	\$20.00
Sleeper sofa	\$35.00
Upholstered chair	\$10.00
Satellite dish	\$20.00
Copy Machine	\$30.00
Fax, printer, keyboards, VCR, radios etc.	\$5.00
Hot tubs / spas	\$30/yd
Bulky Rigid Plastics IE Plastic toys, pails, barrels, plant pots and trays	\$30/ yd

Example of fee schedule  
from the [Town of Colrain](#).

# Center for Hard to Recycle Materials (CHARM)

	2 Required Items	Optional Items	Total # of Items	Frequency
2 Points	Mercury-bearing products and Textiles	10 from the list	12	12x/year
1 Point	Mercury-bearing products and Textiles	6 from the list	8	12x/year

1. Option to collect 6x/year has been eliminated.
2. Must collect 2 required items to earn points.
3. CHARM sites must be listed on Beyond the Bin and items collected **must** match the materials list.

# Center for Hard to Recycle Materials (CHARM)

	2 Required Items	Optional Items	Total # of Items	Frequency
<b>2 Points</b>	<b>Mercury-bearing products and Textiles</b>	<b>10 from the list</b>	<b>12</b>	<b>12x/year</b>
<b>1 Point</b>	<b>Mercury-bearing products and Textiles</b>	<b>6 from the list</b>	<b>8</b>	<b>12x/year</b>

- Automotive wastes
- Books/Media
- Bulky rigid plastics
- E-waste
- Fire extinguishers AND 20 lb propane tanks
- Household batteries
- Large appliances
- Mattresses and box springs
- Paint
- Plastic films
- Shredded paper
- Solar panels
- Source separated gypsum wallboard
- String lights
- Wood
- Yard waste

# Beyond the Bin



**New Look!**

The Beyond the Bin Search Directory is next-level recycle searching! Use it to find outlets for items that can't go in your home recycling bin but are too good (or too bad) to trash. Choose from the material categories listed or enter a keyword, then your location, and hit search. See [Glossary of Materials](#) for category descriptions.

Select a material category ▼

Search by keyword 🔍

Drop-off, Mail-in, or Pic... ▼

Enter location 📍

**Search**

10 mi radius

Visit [Beyond the Bin](#) to add a listing or view this [Video Tutorial & Instructional Guide](#)  
Email [mass.recycles@mass.gov](mailto:mass.recycles@mass.gov) to update current listings.

# Curbside Recycling Regulations

## Subsection 1: Comprehensive Hauler Regulations (CHR)

CHRs must require bundled service, pricing, and mandatory recycling for generators.

- Actively enforces CHRs that apply to **residents and businesses** – 3 Points
- Actively enforces CHRs that apply to **residents only** – 2 Points
- Adopted CHRs – 1 Point
  - Can claim for 3 years



Recycling is mandatory in the Town of Harvard pursuant to Chapter 145, Article IV of the Code of the Town of Harvard, and the Massachusetts Waste Bans, 310 CMR 19.000. All Permitted Haulers must provide both solid waste and recyclables collection to commercial customers unless the commercial customer can provide proof that separate recycling services are provided by another permitted hauler or by demonstrating that they are otherwise diverting mandatory recyclables from disposal. Commercial waste generators who are non-compliant with the recycling requirements are subject to fines as described in Article IV.

Your solid waste hauler, Waste Management of Massachusetts, Inc., recently reported to the Harvard Board of Health that they are not providing your business with recycling services. Enclosed please find a Recycling Service Exemption Form for Commercial Generators.

Kindly complete the form and return it via e-mail to [boh@harvard-ma.gov](mailto:boh@harvard-ma.gov) confirming that your business is recycling by other means. **Your e-mailed response is required before March 21<sup>st</sup>** so that the Board Members can discuss the status of compliance at their meeting on March 25<sup>th</sup>. Failure to respond may prompt additional action by the Board to ensure full regulatory compliance.

Please visit the Harvard Board of Health's Trash & Recycling webpage <https://www.harvard-ma.gov/board-health/pages/trash-recycling> for helpful resources such as MassDEP's Fact Sheet, *Your Business and the Waste Bans: What You Need to Know*, and the Harvard Board of Health's list of currently permitted waste haulers.

Example of a commercial letter from the Town of Harvard.



# Curbside Recycling Regulations

## Subsection 2: Mandatory and Quality Recycling Requirements

Requires residents to recycle or else be subjected to a fine or other penalty (example: rejected cart at curb).

- Actively enforces these rules AND measuring results through an annual recycling audit – 3 Points
- Actively enforces these rules – 2 Points
- Municipality's hauler enforces these rules – 1 Point

\*The differentiation in points based on specific hours spent on enforcement per week has been eliminated.

On **March 27, 2024**, an inspection was made of the property located at **77 Pacific St.**

Non-compliance with the Code of the City of Fitchburg was found, as detailed below.

### VIOLATIONS

#### City Code §112-4 Separation of Recyclables and Other Material, Placement for Removal

- A. Each homeowner or residential occupant participating in the program will benefit from sorting and preparing all recyclable material, and will separate these materials from the trash.
- B. Recyclables shall be washed and rinsed of residual food products, and separated from the trash. The City will only provide curbside collection of approved recyclables if property placed in the recycling cart.
- C. Approved curbside recyclables shall be placed into the recycling cart and placed at curbside in a manner specified by the hauler (bimonthly), every other week according to schedule, and removed from the curbside of the roadway no earlier than 12 hours before collection day as identified by the Board of Health or 12 hours after collection.
- D. All recycling materials shall be placed in the recycling cart in a manner so as to prevent the scattering or spilling of the materials on the ground. No recycling cart shall exceed 75 pounds in weight. Snow-coning and the placement of recyclables in plastic bags are prohibited.

**Please be advised that your recycling carts were rejected by the hauler because trash is mixed in with recycling which violated codes A and B above. In addition, there are plastic bags and/or plastic film/wrapping as well as recyclables placed in plastic bags in the recycling cart. You need to remove the offending items from your recycling cart for the next collection to occur. Please ensure that proper recycling method are employed and that trash is properly separated from recycling forthwith. Failure to do so will result in further fines and or court action against you. Please affix the enclosed stickers to your recycling carts as a guide to recyclable materials.**

Example of a  
residential letter from  
the City of Fitchburg.

# Diversity, Equity, and Inclusion in Recycling Programs

- Must complete **3 activities (1 required and 2 optional) – 1 Point**

**Recycle Smart** **Guía de reciclaje** Su referencia para el reciclaje en Massachusetts

AN INITIATIVE OF THE MASSACHUSETTS DEPARTMENT OF ENVIRONMENTAL PROTECTION

Metal	Plástico	Vidrio	Papel y cartón
 	 	 	 
<b>Latas de comida y bebida</b> vaciar y enjuagar	<b>Botellas, frascos, jarras y tarrinas</b> vaciar y reemplazar la tapa	<b>Botellas y frascos</b> vaciar y enjuagar	<b>Papel mixto, papel periódico, revistas, cajas</b> vaciar y aplastar

**¡No!**

 <b>No bolsas de plástico</b> No meter los materiales reciclables en bolsas	 <b>No ropa ni sábanas</b> usar programas de donación	 <b>No objetos peligrosos</b> no tanques de propano, pilas, jeringas y agujas, ni productos químicos	 <b>No enredadores</b> no mangueras, cables, cadenas, o electrónicos	 <b>No comida ni líquidos</b> vaciar todos los contenedores
--	--	---	---	--

Recyclopedía: ¿Puedo reciclarlo?

Escribir el nombre del artículo (p.ej. botella)

Usar nuestro buscador en línea en: [RecycleSmartMA.org](https://RecycleSmartMA.org)

Todos los programas de reciclaje en Massachusetts aceptan los artículos que se muestran arriba.

**Required activity:** Multilingual trash & recycling guides or [Recycle Smart translated guides](#) are available on the website and/or sent as a mailer.

## Example of translated trash & recycling guide from the [Town of Wakefield](#).

# REUTILIZAR Y REAPROVECHAR

## RECICLAJE



El reciclaje se recoge en semanas alternas de color rojo y azul. ¡Sin clasificación!

Los residentes pueden utilizar un contenedor de reciclaje existente o un barril con una pegatina de reciclaje. Las pegatinas gratuitas están disponibles en el Ayuntamiento.

## BASURA



Considere la posibilidad de donar artículos antes de sacarlos a la basura o al reciclaje. Consulte [recyclesmartma.org](https://recyclesmartma.org) para ver dónde puede donar artículos utilizables. Evitará que los artículos vayan a parar a un vertedero y ahorrará dinero al Ayuntamiento en gastos de eliminación. Su donación puede incluso ser deducible de impuestos.

### LATAS DE METAL PARA ALIMENTOS Y BEBIDAS



### BOTELLAS, FRASCOS, JARRAS Y RECIPIENTES DE PLÁSTICO



### BOTELLAS Y FRASCOS DE VIDRIO



### PAPEL Y CARTÓN



No todos los productos de plástico y papel pueden depositarse en el contenedor de reciclaje. Los siguientes artículos deben ir a la basura:

Envoltorio de burbujas  
CDs y cintas de vídeo  
Tazas de café  
Platos y utensilios desechables  
Tarjetas de felicitación con purpurina  
Servilletas y toallas de papel

Bolsas de plástico para la compra  
Pajillas  
Espuma de poliestireno  
Papel tisú  
Papel para envolver

¿No está seguro? Consulte [recyclesmartma.org](https://recyclesmartma.org) para verificar.

A cada hogar se le asigna un contenedor de basura con un número de serie único. Es propiedad de la ciudad y debe dejarse en la residencia cuando se muda.

¿Demasiadas cosas? Puede comprar cinco bolsas para desechos por \$10 en el Ayuntamiento, Shaws, Farmland, CVS, Hart's Hardware y Walgreens. Colóquelas en la acera antes de las 7 a.m.



Los textiles como las sábanas, las toallas y la ropa que ya no se pueden utilizar se pueden reciclar. Visite [wakefield.ma.us/recycling](https://wakefield.ma.us/recycling) para más información.

Los envases de alimentos deben ser enjuagados y las cajas de cartón aplanadas antes de su reciclaje.



### ¿Sabía que...?

Los cartones corrugados limpios y secos pueden dejarse en el sitio de residuos de jardinería de Nahant Street. Los residentes disponen de un contenedor de eliminación cuando el sitio de residuos de jardinería está abierto, y no se requiere ningún permiso para utilizarlo.

### ¿Sabía que...?

Se consideran artículos no reciclables los que se enrollan alrededor de la maquinaria de reciclaje. Las bolsas de plástico para la compra, las mangueras, los percheros, los cables eléctricos, las cuerdas y otros artículos similares deben depositarse en un contenedor de basura.





# Diversity, Equity, and Inclusion in Recycling Programs

- Must complete 3 activities (1 required and 2 optional) – 1 Point

- Multilingual trash & recycling materials shared with property managers
- Multilingual trash/recycling signage at drop-off location
- Multilingual HHW guides
- Reduced costs for HHW/bulky waste/zero waste days
- Reduced TS access fee
- Recycling services are provided to large buildings (6+ units) – counts as 2 activities
- Information presented to adult/continuing education classes for marginalized groups about trash & recycling

## ¿Los espíritus malignos acechan en su hogar?

LIMPIE LOS ESQUELETOS DE SUS ARMARIOS, SÓTANO Y GARAJE. VENGA AL DÍA DE RECOGIDA DE DESECHOS DOMÉSTICOS PELIGROSOS DE MELROSE/STONEHAM

### ACTUALIZACIÓN IMPORTANTE

TODOS LOS RESIDENTES DEBEN PERMANECER EN EL VEHÍCULO EN TODO MOMENTO  
A CUALQUIER RESIDENTE QUE INTENTE ENTRAR O SALIR DE UN VEHÍCULO SE LE PEDIRÁ QUE SALGA  
NO SE DEVOLVERÁN TODOS LOS CONTENEDORES A LOS RESIDENTES. PLANEE EN CONSECUENCIA ANTES DE DEJARLOS  
TODOS LOS ARTÍCULOS DEBEN ESTAR EN LA MALETERO DEL VEHÍCULO (LA PARTE TRASERA DE UNA SUV) O EN LA PLATAFORMA DE UNA FURGONETA  
LOS ARTÍCULOS NO SE QUITARÁN DE LOS ASIENTOS DE PASAJEROS NI DE LOS ASIENTOS TRASEROS DE LOS VEHÍCULOS  
¿QUÉ PUEDO TRAER?

#### Desde el banco de trabajo:

(NO SE DEVOLVERÁN LOS CONTENEDORES)

- Pinturas a base de aceite, tintes y barnices
- Conservantes de madera (excepto Penta)
- Pintar
- Decapantes/diluyentes Adhesivos solventes
- Líquido para encendedor

#### Desde el garaje:

(NO SE DEVOLVERÁN LOS CONTENEDORES)

- Combustibles/Gasolina/Queroseno
- Anticongelante
- Desengrasante del motor
- Limpiador de líquido de frenos/carburador
- Fluido de transmisión
- Ceras y abrillantadores para automóviles
- Alquitrán para techos
- Productos químicos para piscinas

#### Desde el patio:

(NO SE DEVOLVERÁN LOS CONTENEDORES)

- Venenos, Insecticidas, Fungicidas
- Fertilizantes químicos
- Asesinos de malezas
- bolas de polilla
- Productos para el control de pulgas

#### Para más información contacte:

Departamento de Obras Públicas de  
Melrose  
781-665-0142  
Lunes - Viernes - 8:00 A.M. - 15:30

#### Desde el hogar:

(NO SE DEVOLVERÁN LOS CONTENEDORES)

- Cemento de caucho, pegamento para aviones, fibra de vidrio
- Resinas, fotoquímicos y conjuntos de química
- Pulidor de muebles Pulidor de pisos y metales
- Limpiador de hornos
- Limpiador de desagües e inodoros
- Quitamanchas
- Limpiador de alfombras y tapizados
- Artículos para pasatiempos, Artículos para artistas

#### How Can I Safely Transport These Hazardous Materials?

- Apriete las tapas y los tapones. Clasifique y empaquete por separado: pintura al óleo, pesticidas y limpiadores domésticos.
- Empaque los artículos en cajas verticales resistentes y cubra con periódico

(NO SE DEVOLVERÁN LOS CONTENEDORES)

- Empaque su automóvil y conduzca directamente al sitio.
- NUNCA FUME mientras manipula materiales peligrosos.
- NUNCA MEZCLE QUÍMICOS.

FECHA: SÁBADO 18 DE OCTUBRE DE 2025

HORARIO: 8:00 a. m. a 12:00 p. m.

UBICACIÓN: Estacionamiento de Melrose High School - 360 Lynn Fells Pkwy, Melrose, MA 02176 (solo a través de Melrose Street)

COST:

1/4 DE CARGA DEL MALETERO - \$39.00

1/2 CARGA DE MALETERO - \$47.00

DEL MALETERO - \$78.00

HAGA CHEQUES A PAGAR A LA CIUDAD DE MELROSE

#### ¡Qué no traer!

- PINTURA LÁTEX (Secar, tirar a la basura)
- Contenedores Vacíos/Basura
- Residuos Comerciales o Industriales
- Desechos Radiactivos, Detectores de Humo
- Desechos Infecciosos y Biológicos
- Cilindros presurizados
- Municiones, fuegos artificiales, explosivos
- Extintor de incendios
- Medicamentos recetados/jeringas
- Tanques de helio
- Baterías domésticas alcalinas (tamaño D, C, AA, AAA, 9 V, fabricadas después de 1994 se pueden desechar)
- Productos de Mercurio; termómetros para la fiebre, Pilas de botón, estadísticas t de pared. (Llevar a la Junta de Salud)

Se requiere prueba de residencia



Esta colección es operada por  
Clean Harbors Environmental  
Services, Inc.

Example of translated  
HHW guide from the  
[City of Melrose.](https://www.melrosema.gov/DocumentCenter/View/12345)



# Household Hazardous Waste (HHW)

- Municipality organizes, hosts, participates, or funds a comprehensive event.
- Two subsections:
  - 6+ collection opportunities (including a Permanent HHW site) – 2 Points
  - 2 collection opportunities – 1 Point
- Events must be registered through the [MassDEP Notification for Household Hazardous Waste Events system](#).

## ***Household hazardous waste:***

Chemicals, materials, and products that are toxic and can be harmful to our health and environment.



Check with your city or town for HHW collection days.



# Seventh Inning Stretch



Enjoy this GIF of all things Recycle Smart MA has to offer municipalities to share with their residents to improve education about recycling.

Plus additional resources like signage, tools to explain the recycling system in MA, and the Beyond the Bin Search Directory!

Visit [RecycleSmartMA.org](https://RecycleSmartMA.org) or follow on [Facebook](#), [Instagram](#), or [X](#).

# Organics / Food Waste

## Curbside Collection

- Weekly collection from all HHs served by muni trash program – 3 Points
- Weekly collection from HHs participating in a municipally funded or subsidized private subscription collection program – 1-2 Points
  - At least 3% of HHs must participate or will receive 1 point less
- Weekly collection in a municipally funded pilot program – 1 Point
- Preferred vendor selected through public procurement process – 1 Point
- Weekly collection via private subscription, muni does not fund but promotes via website – 1 Point





# Organics / Food Waste

## Drop-off Center Collection

- Food waste collected at municipally owned collection center AND municipality offers home compost bins to residents at cost or less – 2 points
- Food waste is collected at municipally owned collection center – 1 Point



# Organics / Food Waste

## Backyard Composting

- Municipality offers home compost bins to residents at cost or less – 1 Point
  - Must have an active outreach and education component (videos with composting instructions, demonstrations at public events, videos/demos at library or on local TV).

## Food Rescue & Other Food Waste Diversion

- Municipality or school coordinates local program for food rescue and donation via programs like share tables at schools, community refrigerators, and food pantries, that support students, low-income residents or seniors, and those in need – 1 Point

# Recycling Center Access

- Open to local haulers to tip recyclables – 2 Points
- Open to local businesses – 1 Point
- Open to residents not served by the municipal curbside program (i.e., multi-family units, etc.) – 1 Point
- Open to non-residents – 1 Point





## Example of outreach to businesses from the Town of Chesterfield.

### RE: Small Business Recycling

Did you know that the Town of Chesterfield has a mandatory recycling by-law? Is your company participating in being sustainable?

Many customers in Chesterfield and the surrounding Hilltown's value environmentally friendly businesses. Businesses that visibly recycle tend to generate loyal customers, help preserve the environment, and save \$\$\$ in waste disposal fees.

The Town of Chesterfield encourages you to engage in proactive, responsible recycling of waste materials and wants to let you know that the Town Recycling Center is an option for your recycling needs.

The Town of Chesterfield Transfer Station and Recycling Center is located at Willcutt Rd. and accepts household quantities of these post-consumer materials from local businesses: recyclable paper and cardboard, glass containers, tin and aluminum cans and foil, plastic containers labeled 1-7, household re-chargeable batteries, mercury lamps and bulbs, books and CDs, scrap metal and textiles.

For more information visit the Town's transfer station and recycling center website at: [townofchesterfieldma.com](http://townofchesterfieldma.com).

# Reuse Programs

Municipalities can now identify more than one reuse activity!

- Completed a minimum of 3 activities from the list – 2 Points
- Completed a minimum of 1 activity from the list – 1 Point

- Swap Shops (permanent, seasonal, regional)
- Single-use items ban
- Repair events
- Zero Waste Days
- Tool Library/Library of Things
- Dishwashers & reusables in schools
- Deconstruction pilot
- Municipal program incentivizing deconstruction
- Policy requiring the donation of usable surplus municipal property
- Community-wide yard sale or bulky collection where usable items are collected and directed to donation, reuse, or recycling

# Solid Waste Reduction

The qualifications for receiving points in this category have been adjusted:

- Full or modified PAYT munis may receive the maximum points (5, 4) available when they have:
  - $\geq 50\%$  eligible HHs participating,  
OR
  - $< 50\%$  eligible HHs participating but has Comprehensive Private Hauler Regulations (CHRs) requiring recycling service and bundled pricing for all residential trash customers.

Munis with  $< 50\%$  participation and no CHRs will receive one less point (4, 3).

\*This does not apply to municipalities claiming PAYT points for the first time.

# Solid Waste Reduction

## A municipality will receive full points if:

- 1,000 HHs are eligible to participate in the PAYT program and 500+ do
- 1,000 HHs are eligible to participate in the PAYT program, less than 500 do so, but the municipality has a CHR
- Muni has a newly implemented PAYT program and is claiming RDP points for the first time

## A municipality will receive one less point if:

- 1,000 HHs are eligible to participate in the PAYT program and less than 500 do so, and the municipality does not have a CHR
- 1,000 HHs are eligible to participate in the Modified PAYT program with multiple trash cart sizes available, but less than 500 use a cart that is 35-gallon or less, and the municipality does not have a CHR.

# Solid Waste Reduction

- Full PAYT – 4-5 Points as eligible
- Modified PAYT – 3-4 Points as eligible
- Trash Limit with 64-gallon cart collected every other week – 3 Points
- Trash Limit with 48-gallon cart collected every week – 2 Points
- Trash Limit with 96-gallon cart collected every other week – 2 Points





# Waste Prevention Outreach & Education

Pizza boxes must be identified as recyclable in municipal outreach and education.



**Why?** Because we want consistent messaging about pizza boxes. If our team comes across incorrect information during evaluations, the municipality will not be eligible for this category.

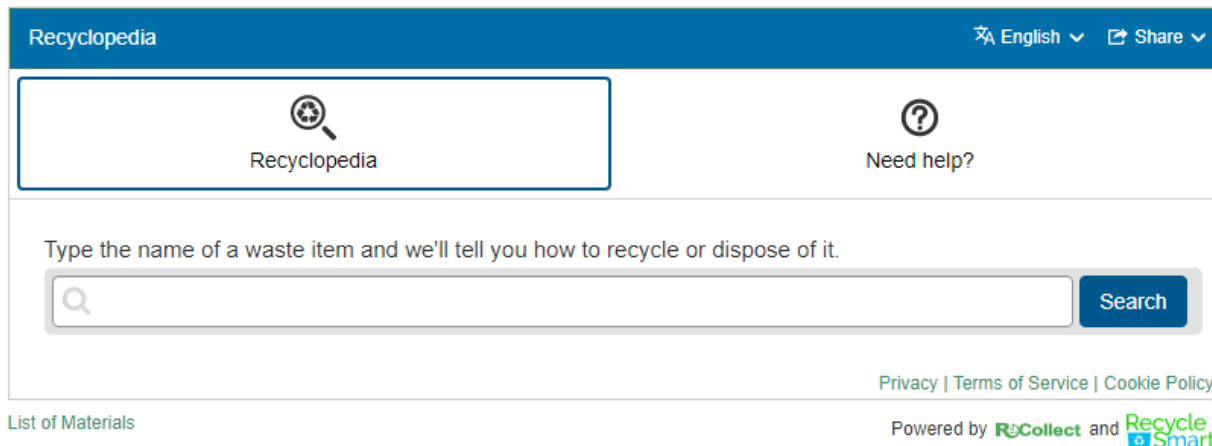


# Waste Prevention Outreach & Education

- Complete 6 activities (1 required and 5 optional) – 1 Point

## Beyond the Bin Search Directory

### [RecycleSmartMA.org](https://RecycleSmartMA.org)



The screenshot shows the Recyclopeda website interface. At the top, there is a blue header with the text "Recyclopeda" on the left, a language dropdown menu set to "English" in the center, and a "Share" button on the right. Below the header, there is a white search area. On the left side of this area is a magnifying glass icon with the text "Recyclopeda" below it. On the right side is a question mark icon with the text "Need help?" below it. Below these icons, there is a text input field with the placeholder text "Type the name of a waste item and we'll tell you how to recycle or dispose of it." To the right of the input field is a blue "Search" button. At the bottom of the page, there is a footer with links for "Privacy", "Terms of Service", and "Cookie Policy" on the left, and "Powered by ReCollect and Recycle Smart" on the right. The "ReCollect" logo is in green and blue, and the "Recycle Smart" logo is in blue and green.

**Required activity:** link to Beyond the Bin directly, link to RecycleSmartMA.org, and the Recycle Smart Recyclopeda Widget (or something comparable).

# Waste Prevention Outreach & Education

- Complete 6 activities (1 required and 5 optional) – 1 Point

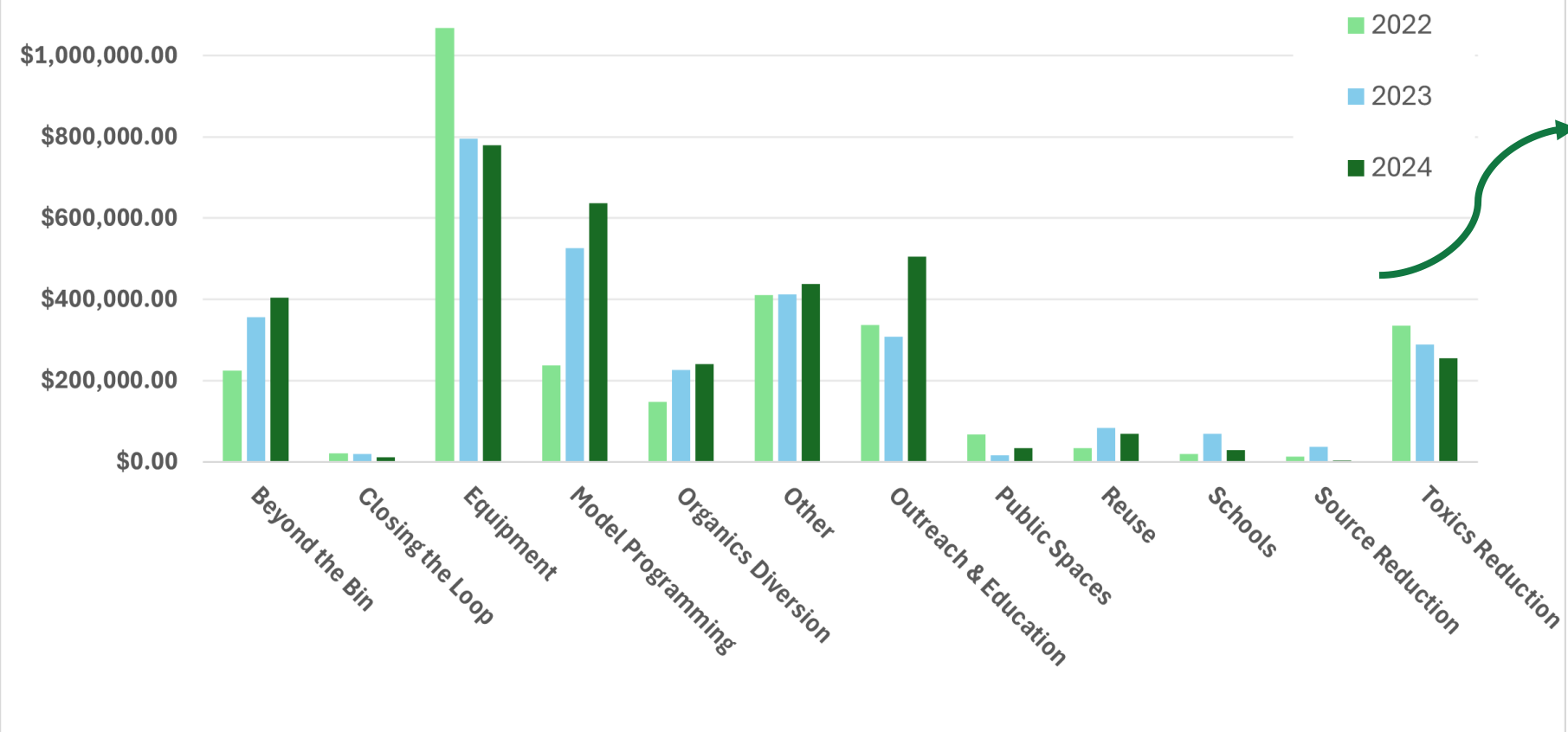
- Recycling mailing or handout
- Actively posts on social media or publishes paper or e-newsletter
- Run an ad or PSA
- Creates a guide or manual
- Messages via a sandwich board, billboard, etc.
- Publishes a waste reduction goal
- Subscribes to a mobile recycling app
- Hosts/coordinates a community-wide cleanup event and provides recycling education
- Reshares at least 6 RSMA posts on social media (must be [RSMA partner](#))

# Approved Spending

- Please see [Approved Spending Categories](#) for a list of pre-approved expenditures for RDP and Regional Small-Scale Initiatives funds
- Ask your MAC for clarification
- No special spending requests will be considered
- See the [Community Spending Examples](#) sheet for ideas!



Spending in RDP Categories from 2022 - 2024



More \$ being spent on outreach & education, public spaces, and organics diversion!

	2022	2023	2024
Total Spent	\$2,916,317.19	\$3,139,595.28	\$3,407,115.99
Total Balance	\$7,430,548.14	\$8,200,734.39	\$7,881,233.00

Total RDP funds spent has increased – great job!

Balance remaining is still high (keep spending 😊)

# RDP Dedicated Account

- Separate account managed by the municipality for specific funding resources
  - All RDP funds will be saved separately to ensure they are utilized for approved expenditures
- A dedicated account is required for RDP funds
  - If the municipality does not have one, it must certify that one will be in place when signing the RDP Scope of Work
- Intent is to make it easier for municipalities to access, spend, and track this money

**RDP**

**Thank you!**





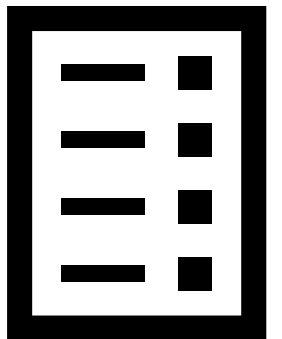
# Open Project Proposals: Waste Reduction / Organics Capacity / Household Hazardous Waste Facility Projects

Rachel Smith

[Rachel.Smith@mass.gov](mailto:Rachel.Smith@mass.gov)

# Waste Reduction Projects

- Expand the scope or effectiveness of reuse, recycling, composting, or household hazardous waste programs.
- Grants range from \$20,000 to \$100,000.
- Must be completed within 2 years of award.
- Funds can be used for equipment, capital costs, professional services, outreach/education, and new personnel.
- Project serves residents, businesses, public agencies, schools, etc.



# Waste Reduction Projects

- Regional centers for reuse and recycling of source-separated materials.
- Reuse and recycling of bulky items (e.g., furniture, sinks, toilets, rigid plastics).
- Materials reuse and/or repair to extend the useful life of products or packaging.
- Recovery of targeted materials or other difficult-to-recycle materials.
- Municipal program expansion to underserved populations (e.g., public housing, mobile home parks, apartments, condominiums, disabled residents, etc.).
- Innovative education, outreach, and enforcement strategies to increase public participation in reuse, recycling, composting, and waste reduction programs.
- Public space/event recycling that will serve large gatherings on an ongoing basis.
- Regional PAYT programs.

# Waste Reduction Projects



## Cape Cod Latex Paint Collection and Recycling Initiative:

To recycle usable **latex or acrylic paint**, please visit Cape Cod Latex Paint Collection and Recycling Initiative at:

**[www.townofbourne.com/paint](http://www.townofbourne.com/paint)**

HazMat not accepted.

Cape Cod Latex Paint Collection and Recycling Initiative sponsored by MA DEP. Paint will be recycled for free by ReColor Paints ([www.recolorpaints.com](http://www.recolorpaints.com)).

# Organics Capacity Projects

- New or expanded facilities to manage source separated food waste through animal feed, composting, anaerobic digestion, etc.
- Grants range from \$20,000 to \$250,000.
- Must be completed within 2 years of award.
- 85% funds must be used for capital costs (equipment, site improvements, and facility construction).
- 15% funds allowed for professional services (engineering and design) and project management (consultants or contractors).



# Organics Capacity Projects

- Expansion of leaf and yard waste composting operations to include food waste.
- New equipment or operations to process source separated organics (e.g., slurring, decontamination, anaerobic digestion, and/or composting).
- Improvements to an existing operation that handles source separated food waste.
- Municipal organics collection program that also serves commercial generators.





# Permanent HHW Facility

- Establish a permanent collection facility that allows municipalities to collect household hazardous wastes at regular intervals.
- Grants range from \$50,000 (individual) to \$250,000 (regional).
- Must be completed within 2 years of award.
- 85% funds must be used for capital costs (equipment, site improvements, and facility construction).
- 15% funds allowed for non-capital expenses (engineering, design, etc.).

# HHW Facility Projects

- Establishment of a permanent collection facility where municipalities can regularly collect HHW.
- Upgrades to existing facilities that provide collection of HHW.



# Application Process

- Eligible Applicants include:
  - Individual municipalities
  - A municipality acting as a lead for a multi-town regional initiative
  - A regional governmental entity established by legislative authorization
- Complete the [Mandatory Proposal Outline](#) on MassDEP's webpage.
- Upload document to ReTRAC.
- Complete all other SMRP grant pre-requisites.
- [Details: Waste Reduction / Organics Capacity / HHW Facility](#)

# Evaluation Criteria

- **Justification/Need** – identifies a clear need/problem to address, unmet gaps, benefits, alignment w/ DEP priorities.
- **Feasibility/Work Plan** – roles and responsibilities, milestones, timeline, sustainability.
- **Measurement/Evaluation** – benchmarks, data to measure success.
- **Support/Commitment** – support from project partners.
- **Budget** – financial and in-kind resources.
- **Other** – matching funds, RDP funds, EJ community, population size, project model, existing ordinances/bylaws to support project, regional project.

# SMRP Grant Timeline

Applications open in [ReTRAC](#), and formal question period begins:

<https://forms.office.com/g/YrCCXDHc3a>

**April 1 at 7:00 AM**

Answers posted to SMRP grant website: [www.mass.gov/how-to/apply-for-a-sustainable-materials-recovery-program-smrp-municipal-grant](http://www.mass.gov/how-to/apply-for-a-sustainable-materials-recovery-program-smrp-municipal-grant)

**May 12 at 5:00 PM**

**May 5 at 5:00 PM**

**Deadline for submitting questions.**

**June 2 at 11:59 PM**

**Application deadline.**



# Questions?