



# White Island Pond

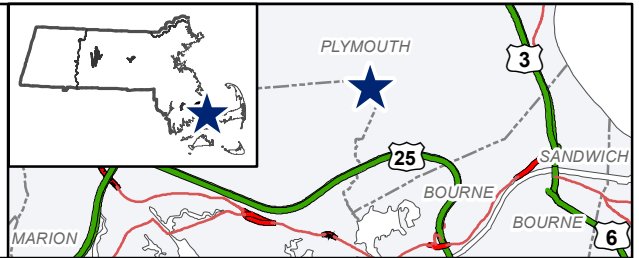
318 Acres

Plymouth/Wareham

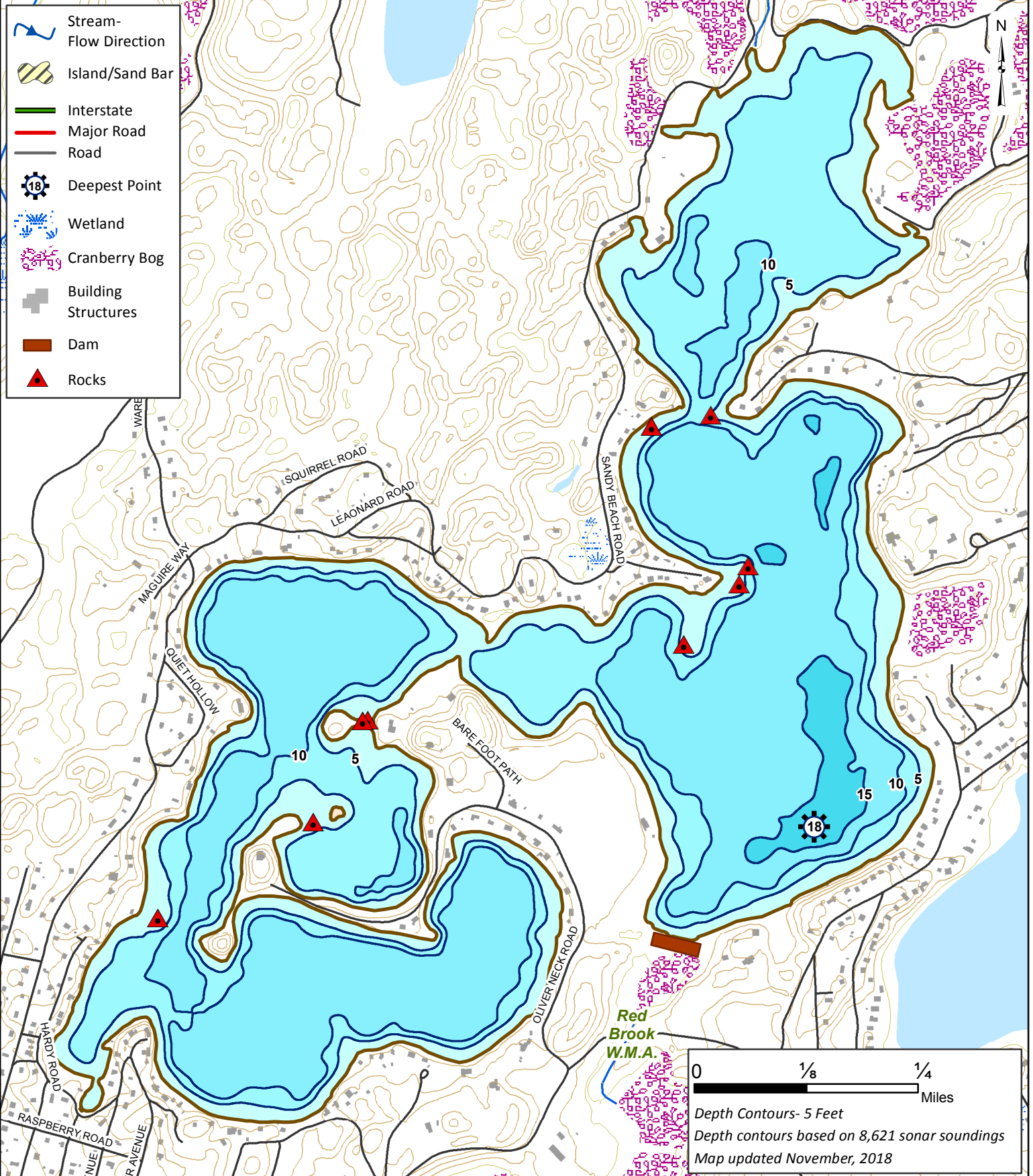
Buzzards Bay Watershed

Coordinates: 70°37'0.45"W 41°48'24.13"N

USGS Quad: WAREHAM/SAGAMORE



- Stream-Flow Direction
- Island/Sand Bar
- Interstate
- Major Road
- Road
- Deepest Point
- Wetland
- Cranberry Bog
- Building Structures
- Dam
- Rocks



0 1/8 1/4 Miles

Depth Contours- 5 Feet

Depth contours based on 8,621 sonar soundings

Map updated November, 2018