

Reconstruction on Route 38 (Main Street), from Route 62 to the Woburn city line in Wilmington, MA

February 25, 2026

Michael O'Dowd, Director of Major Projects

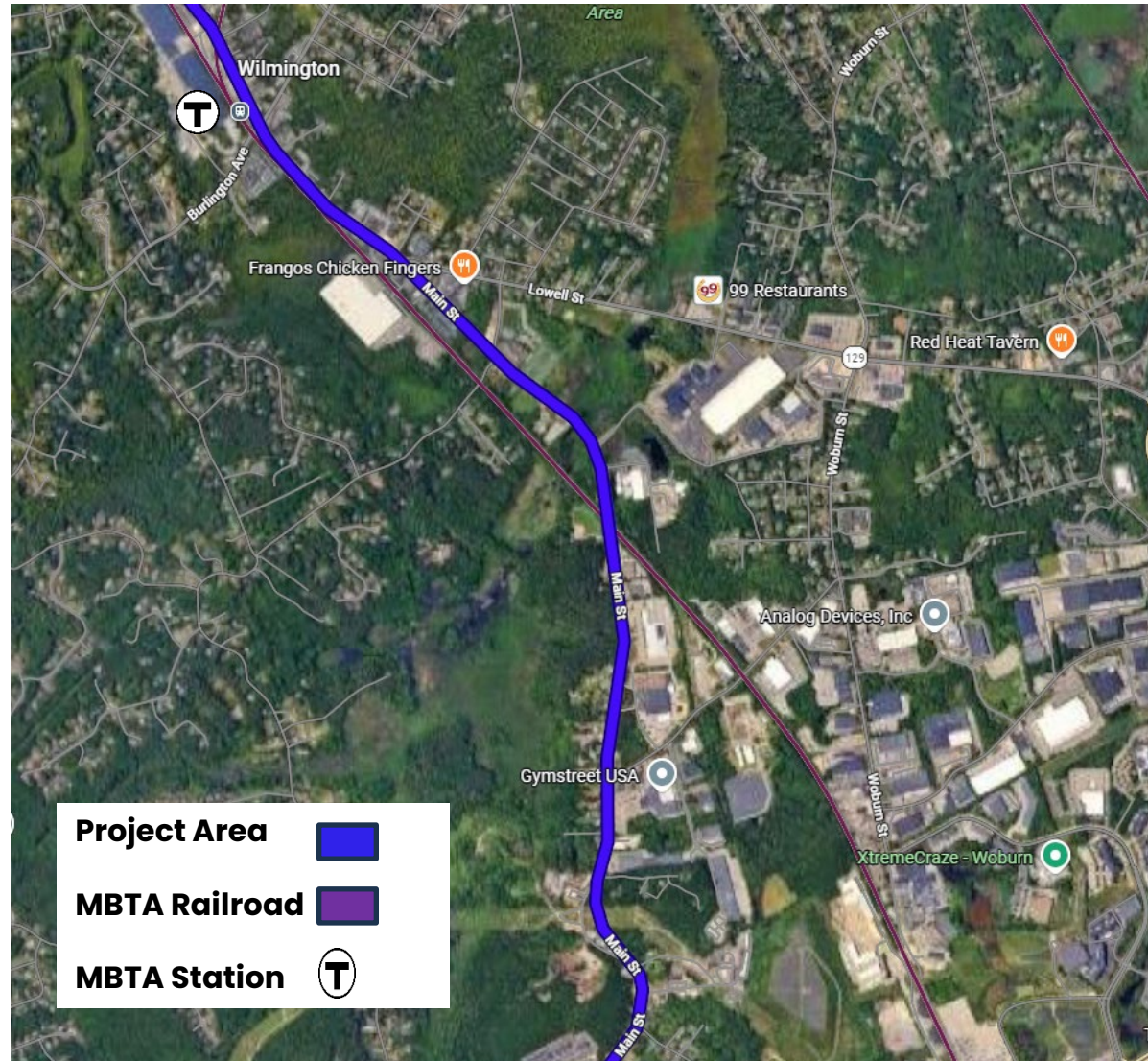


Table of Contents

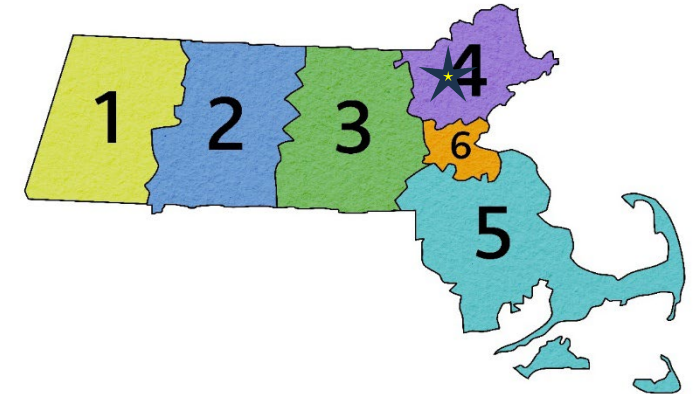
3. Overview
5. Project Scope
7. Construction Management Approach
8. Procurement & Budget
9. Questions from Capital Programs Committee
10. Request of the Board
12. Appendix

Overview

Project Location – Route 38 (Main Street) in Wilmington, from Route 62 to Woburn city line



massDOT Highway Districts



★ District Project Location

Overview

Beyond Mobility Highlights

- This project was initiated to reconstruct a 2-mile segment of Route 38 due to poor pavement conditions, substandard roadway geometry, and deficient bicycle and pedestrian accommodations
- The design promotes **Safety** for all users through new bicycle and pedestrian accommodations and improvements to the roadway geometry and traffic signals.
- New bicycle and pedestrian accommodations also support **Destination Connectivity** by improving access to the Wilmington MBTA Commuter Rail station
- Project Investment meets Beyond Mobility priorities for **Reliability**, by reconstructing the poor pavement, and **Travel experience**.
- The project supports **Resiliency** through the improvements to the drainage and water system and addition of Stormwater Control Measures.



Existing Conditions: Poor pedestrian accommodations, and limited sight distance. Site of frequent vehicle crashes.

Project Scope



Substandard roadway geometry



Narrow shoulder, deficient pedestrian accommodations, high crash rate, and sharp crest curve limits sight distance

Project Scope



Limited/deficient drainage and poor pavement conditions



Narrow shoulder, lack of sidewalks, and limited sight distance

Construction Management Approach

Outreach, Permitting and Duration

Public Outreach:

- DPH/Design Public Hearing on June 12, 2020

Permits on the project include:

- **Wetlands Protection Act (WPA)** Order of Conditions (OOC) issued by the Town of Wilmington Conservation Commission
- **Section 401 Water Quality Certification (WQC)** for Minor Dredge and Major Fill Projects issued by MassDEP Section 404 USACE authorization under MA General Permit 23
- **National Environmental Policy Act (NEPA)** Categorical Exclusion (CE)

Federal clearances:

- **Section 7 of the Endangered Species Act (ESA)** / USFWS NLAA Concurrence Verification
- **Section 106 of the National Historical Preservation Act**
- **Section 4(f) of the DOT Act – De minimis impact** determination

Massachusetts Environmental Policy Act (MEPA)

- **Expanded Environmental Notification Form (EXENF)**
- **August 1, 2025 Final EIR Secretary Certificate**

Construction Duration:

- The Construction Contract Duration is 5.5 years from the Notice to Proceed, and accounts for municipal and public utility relocations
- Project is Design Bid Build



Procurement and Budget

- Project Advertised September 13, 2025
- Engineer’s Estimate was \$ 37.38 M
- Bid Opening held February 3, 2026
- Seven (7) bids were received:

Northern Construction Service LLC	\$36,389,683.00
D W White Construction Inc	\$36,459,795.96
Barletta Heavy Division INC	\$36,607,573.00
J F White Contracting Co	\$41,749,667.00
Albanese D & S, Inc	\$43,736,420.16
E T & L Corp	\$44,348,715.00
McCourt Construction Co Inc	\$45,792,147.50

Line Item	Budget
Bid Amount	\$36,389,683.00
Contingencies	\$3,638,968.30
Construction Engineering (5%)	\$1,819,484.15
Railroad flaggers	\$150,000.00
Specialty Services (MBTA)	\$300,000.00
Traffic Police	\$1,310,000.00
Trainees	\$4,000.00
Total	\$43,612,135.45

Project is funded using Federal Aid Funds:
 HSIP – Highway Safety Improvement Program
 CMAQ – Congestion Mitigation/Air Quality
 STGB – Surface Transportation Block Grant

Questions from Capital Programs Committee

Q1. Why is the project duration 5 years?

A1. Utility relocations and drainage work add time to the project. The Town is concurrently working on water main reconstruction. MassDOT is committed to maintaining traffic in each direction at all times to maintain access for local business.

Q2. The top two bids are very close – are any other parameters than cost considered?

A2. All bids are reviewed for changes between bidders, seeing anywhere there may be outliers.

Q3. Does the project include any bicycle and/or pedestrian accommodations?

A3. The project includes 5ft wide bike lanes and sidewalks throughout the corridor.

Q4. Is there any worry for the federal aid funding on this project?

A4. Funding is available and we will be able to award the contract and have the Notice to Proceed in a fairly short time.

Q5. Is there any discussion with the community in extending the bike lanes beyond project limits?

A5. The Highway District office works closely with the community to look at the project termination point and the bike/ped needs beyond those limits.

Q6. What is the work at the MBTA crossing?

A6. We are constructing a retaining wall behind the station as well as signage improvements. We are not anticipating any disruptions to service to passengers. The signalized crossings will ensure safe pedestrian and bicycle access to MBTA station.

Request of the MassDOT Board of Directors

The Price Proposals were reviewed by engineers in Construction, Construction Contracts, Major Projects, and the Design Consultant; costs were found to be reasonable and recommended to be awarded to the apparent low bidder.

Request of the MassDOT Board

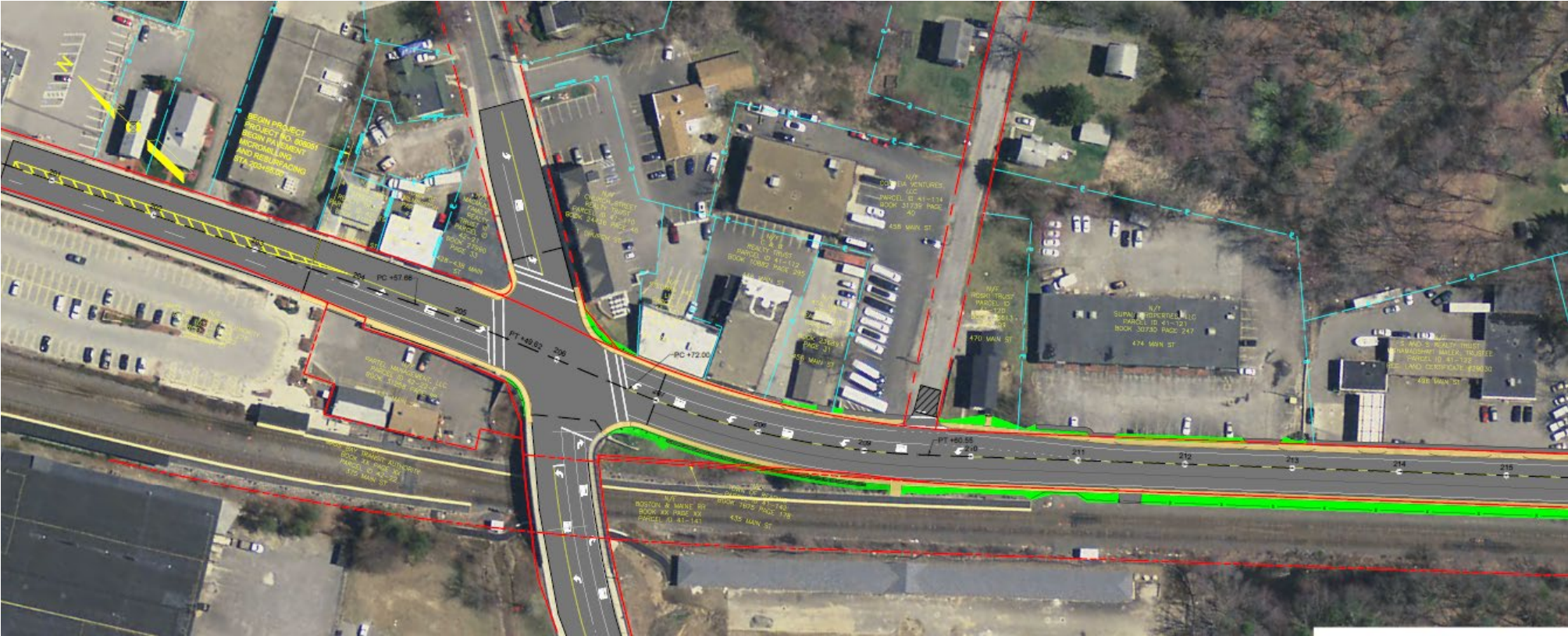
Staff request that the MassDOT Board of Directors make recommendation to authorize the Secretary of the Massachusetts Department of Transportation, or their designee, to award and execute MassDOT Construction Contract 132406 – Wilmington – Reconstruction on Route 38 (Main Street), From Route 62 to the Woburn C.L., with **Northern Construction Service LLC**, for the amount of **\$36,389,683.00**.

Thank You



Appendix

Proposed Improvements



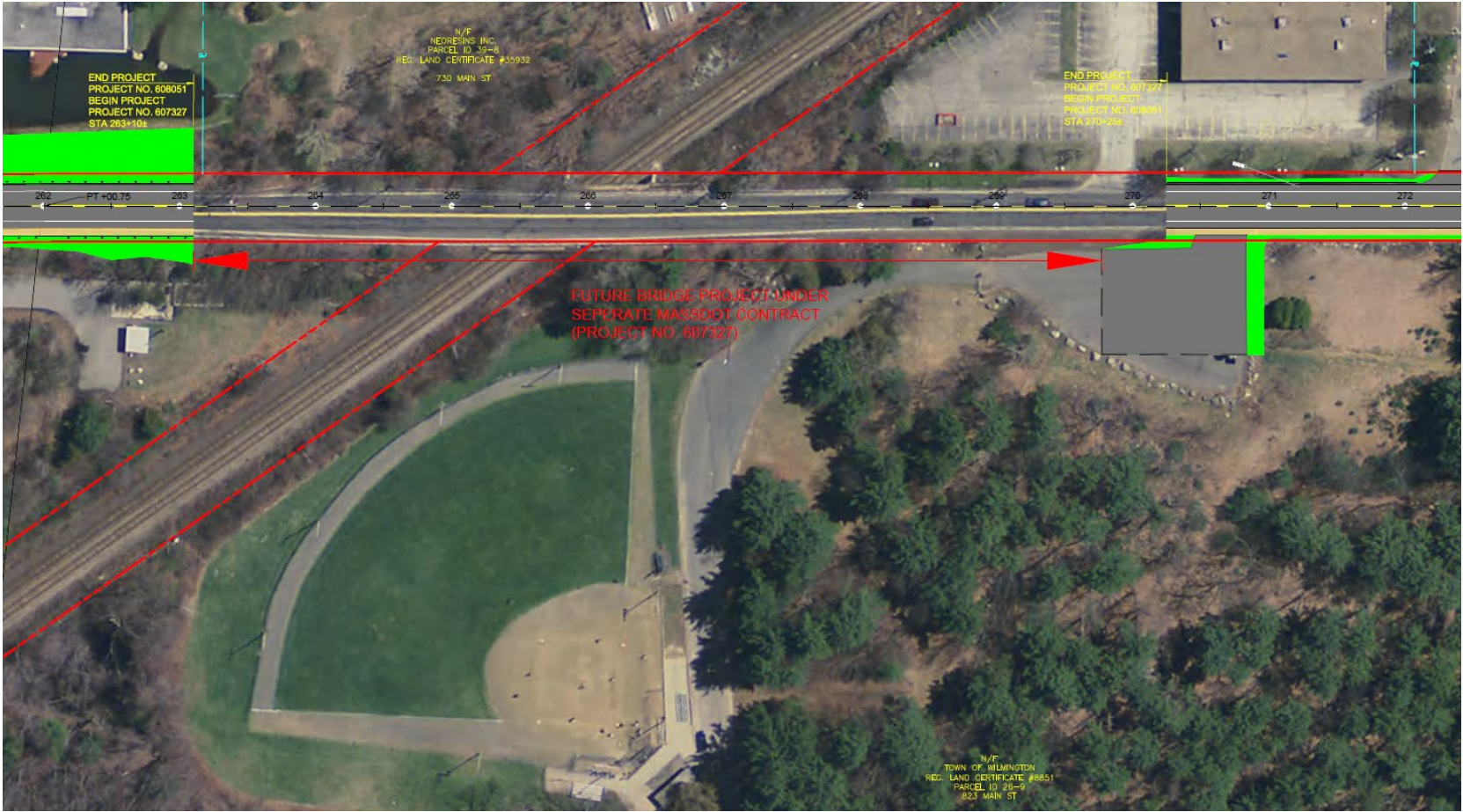
Proposed Improvements



Proposed Improvements



Proposed Improvements



Proposed Cross Section

