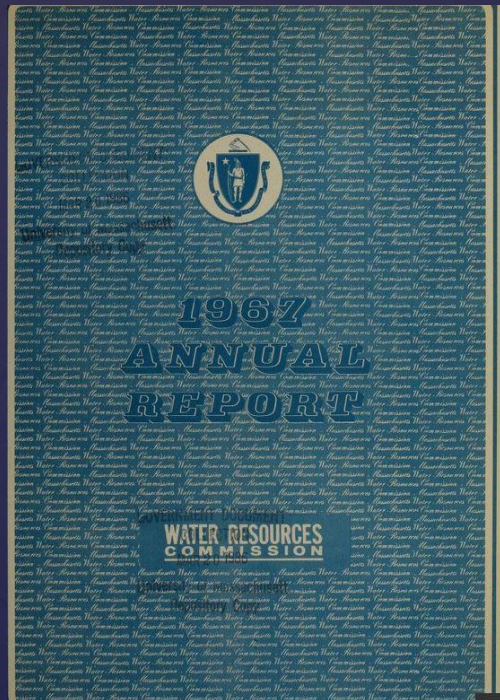


*A glimpse back at the*  
**1967 Annual Report**  
of the  
**Water Resources Commission**



# 1967 - Fifty Years Ago Amidst the 1960's Drought



2

Views of the Quabbin Reservoir,  
October 1966

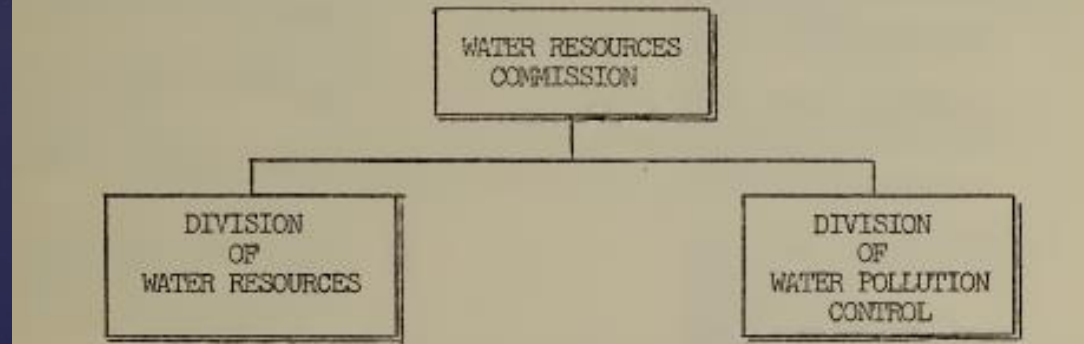
Thursday, September 14, 2017

# 1967 Annual Report

## Some Key Organizational Differences vs. Today:

- Water Resources Commission under Division of Natural Resources
- Commission membership slightly different
- Division of Water Resources
- Division of Water Pollution Control just created January 1, 1967

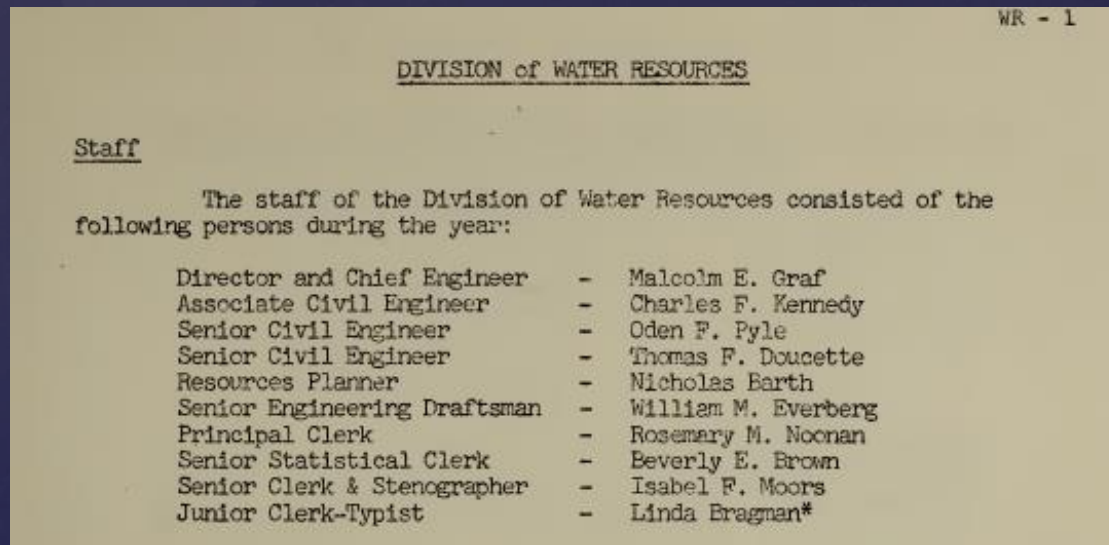
The new Division was created in the Department of Natural Resources under the Water Resources Commission.



# 1967 Annual Report

## Division of Water Resources- differences:

- Staff make-up different
- Types of projects different (P.L. 566, reservoirs, flood control works, stream diversions, water resources and water supply investigations, flood control commissions, legislative directives, management of water usage)



# 1967 Annual Report

## Division of Water Resources- some things the same:

- Rainfall network (116 Commission stations, 27 "Weather Bureau" stations)
- Annual statewide rainfall in 1966 36.70", deficit 6.93" (in 2016 37.65", deficit 7.34")
- Streamflow- 68 gaging Stations (Commission, M.D.C., D.P.W.)
- Groundwater studies
- Start seeing shift to planning

### Participation Under Title III, Water Resources Planning Act (P.L. 89-80)

September 15, 1966 Governor John A. Volpe designated the Commission, acting through its Division of Water Resources, to administer the planning program authorized by Title III of the Water Resources Planning Act. An application was submitted on January 11, 1967, with a Federal grant of \$36,500 being subsequently made available

Considerable time was also devoted to the water base data problems and the programming of multi-organization inputs and responsibilities in a regional water planning effort for the Ipswich River Basin under Chapter 682/Acts of 1966.

WR - 9

### III Collection of Basic Data

#### Rainfall

The Commission continues to operate a system of 116 rainfall stations. The rainfall data collected from these stations is exchanged with the U. S. Weather Bureau for data on the stations which they operate. Thus, the Commonwealth has an active network of 143 rain gages in operation at the present time. We also have two automatic rain gages in operation, one in Springfield and one in Maynard.

The annual rainfall for the various sections of the State for the Calendar Year 1966, as shown by representative long-term stations, is as follows:

#### Rainfall in Inches - - 1966

	State	Northeast Section	Southeast Section	Central Section	Conn.River Section	Western Section
January	3.85	5.38	3.82	4.17	2.62	2.99
February	3.47	3.26	3.23	3.52	3.52	2.99
March	2.51	1.95	1.97	2.52	2.61	2.36
April	1.36	1.27	1.50	1.08	1.34	1.64
May	3.06	3.02	4.60	3.47	2.66	2.38
June	2.59	2.56	1.53	2.67	2.94	2.38
July	3.63	3.21	1.37	3.04	5.22	4.54
August	1.31	1.24	2.47	1.18	1.68	2.47
September	5.06	4.63	5.13	5.35	5.31	5.82
October	3.32	2.98	3.14	3.67	4.62	3.77
November	4.08	4.30	4.73	4.79	3.75	3.07
December	2.46	2.33	2.71	2.73	3.21	3.07
YEAR	36.70	36.13	36.20	38.29	39.68	37.48
NORMAL	43.63	42.30	43.98	43.89	43.82	43.53

# 1967 Annual Report

## Division of Water Pollution Control:

- “adopted standards of water quality, classified the waters of the Commonwealth and developed a plan for implementation...”
- WQS February 17, 1967 public hearing, March 3 adopted by WRC, March 6 filed with Secretary of State
- Classification of Waters public hearings started March 16, WRC approved June 20
- Grant Programs sewage treatment facilities, sewerage facilities
- Federal Water Pollution Control Act Demonstration Grant- MDC for Cottage Farm CSO Facility!



# 1967 Annual Report

Some things never change...

Recommendation #1 - That additional funds and increased staff be made available to carry out the Commission's activities.



Quabbin December 1, 2016

7

Thursday, September 14, 2017