

Ware River Watershed Trails Annual Report 2024

Prepared by the Trails Subcommittee of the
Ware River Watershed Advisory Committee (WRWAC)
Presented July 10, 2025

Agenda

Intro

2024 volunteer stewardship summary

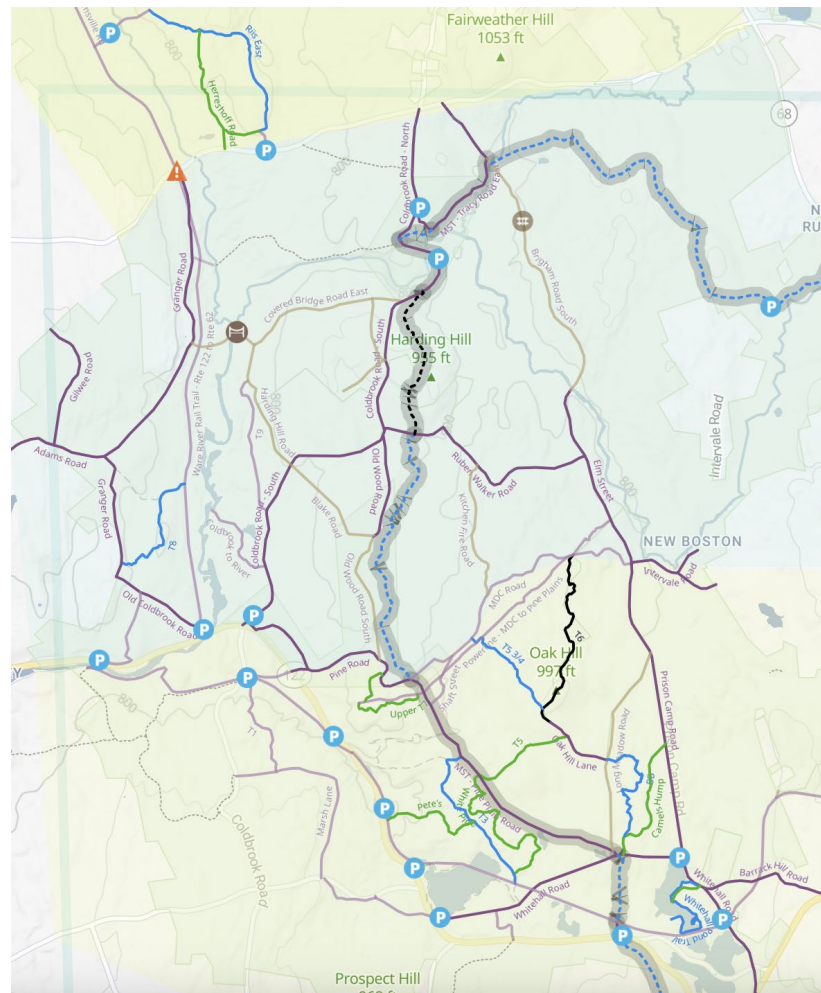
WRRT crossing updates

Partnership retrospective

Biennial review

Trails Committee Introduction

- Trails Committee seats represent
 - 4 towns' Open Space Committees
 - Historical
 - All user groups (hiking, biking, equestrian, snowmobiling)
- Active in the map shown here.
- Stewardship efforts have focused on all trails shown in green, blue, and black.
- The entirety of the network, a mix of woodland trails and roads, is popular across all authorized user groups



2024 WRW Trails Volunteer Stewardship

Accomplishments:

- Maintained app. 18 miles of trails
 - Including collab with AMC Midstate Trail Committee
- Installed 20' french drain on the Camel's Hump Trail
- Created 6+ recommended routes for DCR-DWSP led hikes
- Inspired and supported two municipal WRRT road crossing projects

Building a French Drain - Part 1



Building a French Drain - Part 2

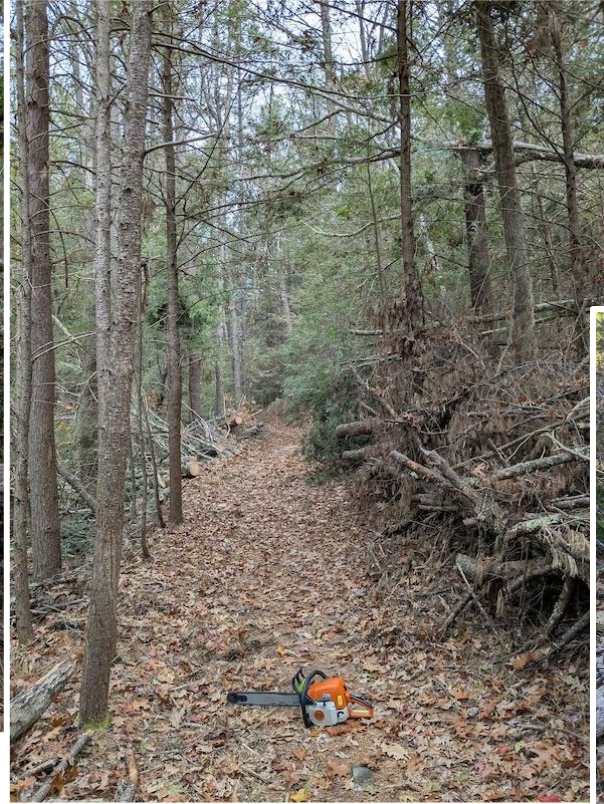


French Drain In Action - March 2025





Many Tree Cleanups



AMC MST Bog Bridges



Update: Hubbardston WRRT Crossing Funded, Completed in 2024!

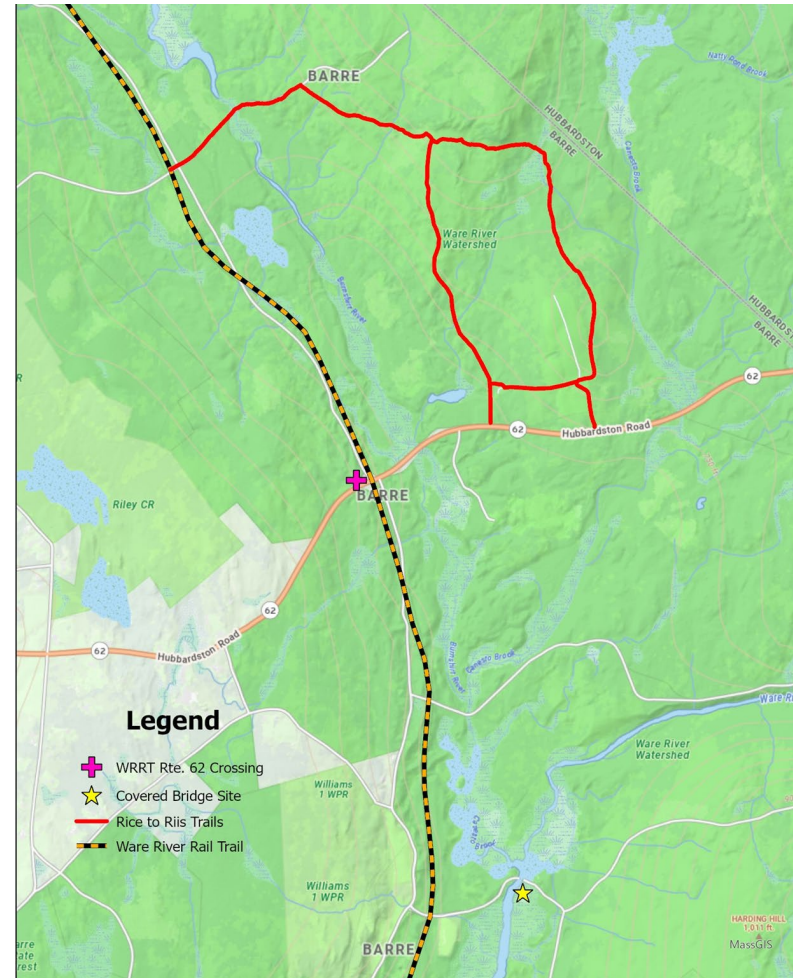
Thank you Mark Kresge and Kristofer Munroe for your work with the Town of Hubbardston bringing this safe Ware River Rail Trail crossing to Williamsville Rd, enabled by ARPA and MassTrails funding!

WRRT Williamsville Crossing - RRFB Installation



Update: Barre WRRT Crossing at Hubbardston Rd (Route 62)

- Presented request at Selectboard meeting
- Town of Barre assumed the project, but it is delayed from originally intended schedule



Partnership Retrospective - What Went Well

- Trail marking and focus by Ranger staff
- Good communications
- Great willingness to collaborate
 - Field visits
 - Materials assistance
 - Gate access for trail work needs
 - Widening gate passages
 - Parking & road improvements at Cemetery Bridge
 - Rice Rd bridge repair response

Partnership Retrospective - What Didn't go as Well

- Trails Committee wasn't included in discussions about DCR-DWSP trail projects
 - Walker Burial Ground
 - SCA projects
- Trail naming - mutual miss

Partnership Retrospective - Improvements We Could Make

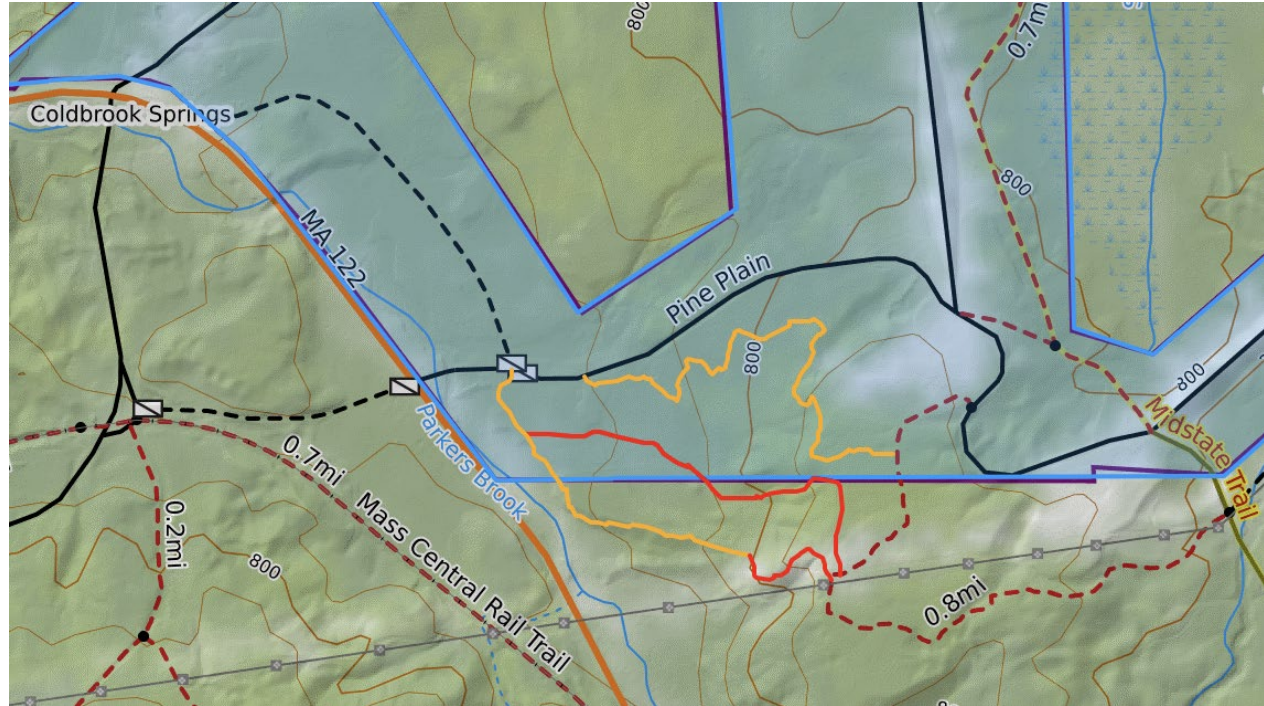
- Communication
 - Set intended deadlines for action, with as much notice as possible
 - Improve cross-communications about trail efforts and goals
- Planning
 - All requests are ad-hoc today -- neither of us are aware of each other's wants and needs.
 - A long-term trail plan would help us all.
- Forestry and Trails
 - Could we consider a trail presence and treatment section in forestry proposals?
 - Could we consider post-harvest connectivity options enabled by forestry operations?

Biennial Review Requests

- Resume project to reconnect Lower T7 in partnership with USACE
- Connect Barre Falls to Riis Farm via Stone Road
- Establish Rutland State Park pavement-bypass trail for snowmobile connectivity leveraging legacy powerline.
- Audit trail route along/crossing of Old Turnpike Rd

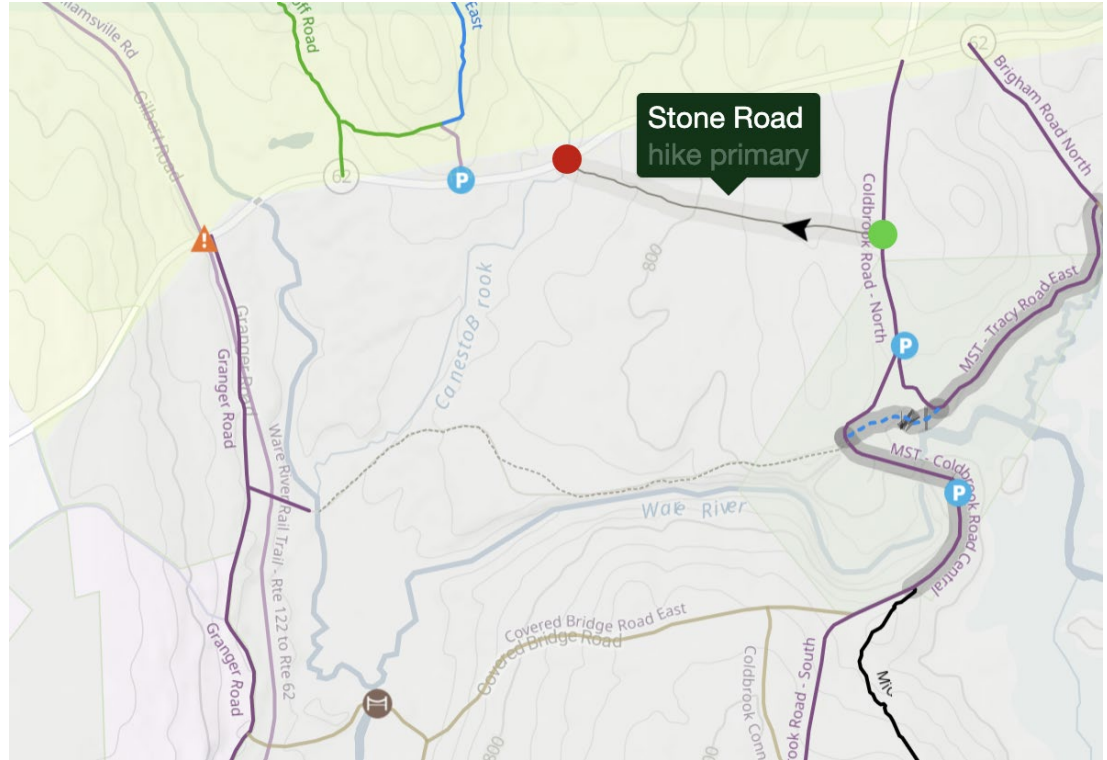
Re-connect Lower T7 in partnership with USACE

- Let's discuss connection options with US Army Corps of Engineers



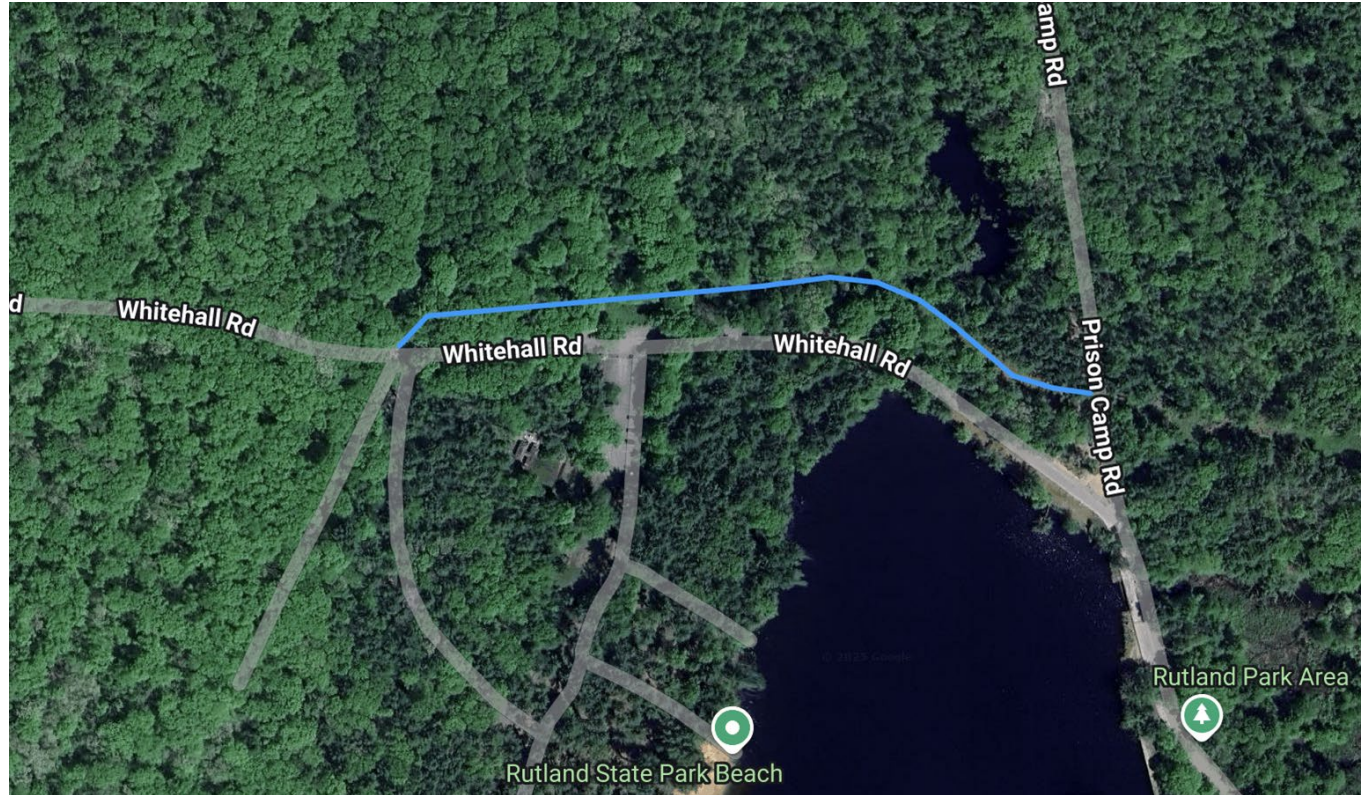
Connect Barre Falls to Riis Farm via Stone Road

- The eastern half of Stone Road is maintained today
- If we can open the western half, it's a short connection to Riis Farm from there
- [Link to trail description](#)



Rutland State Park - Winter trail under powerline

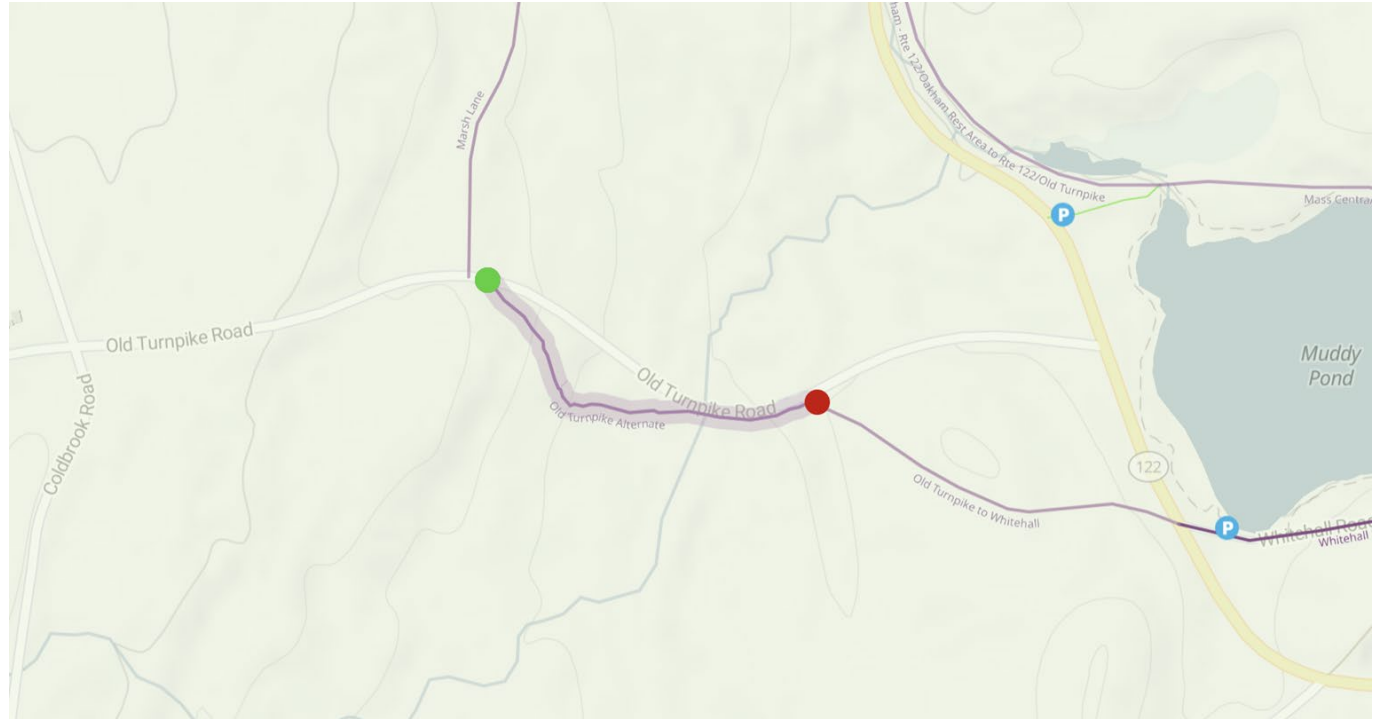
Request for snowmobiles to connect Prison Camp Rd to Whitehall Rd along powerline corridor to bypass plowed pavement along park entrance.



Audit Old Turnpike Bypass Trail

Seeking site visit to consider improvements:

- Road crossing safety and alignment
- Grade sustainability
- Culvert
- [Trail link](#)



Conclusion: Celebrating the Results of our Partnership

- Many thanks for this outcome -- the trails community loves the WRW
- Have not heard a negative comment yet
- Positive feedback about the Riis Farm loop
- It's the only trail network that serves all abilities, especially beginner/intermediate (which are most users)
- Offers a rare opportunity to experience wilderness close to home

