

MASSACHUSETTS COMMERCIAL FISHING PORT PROFILES

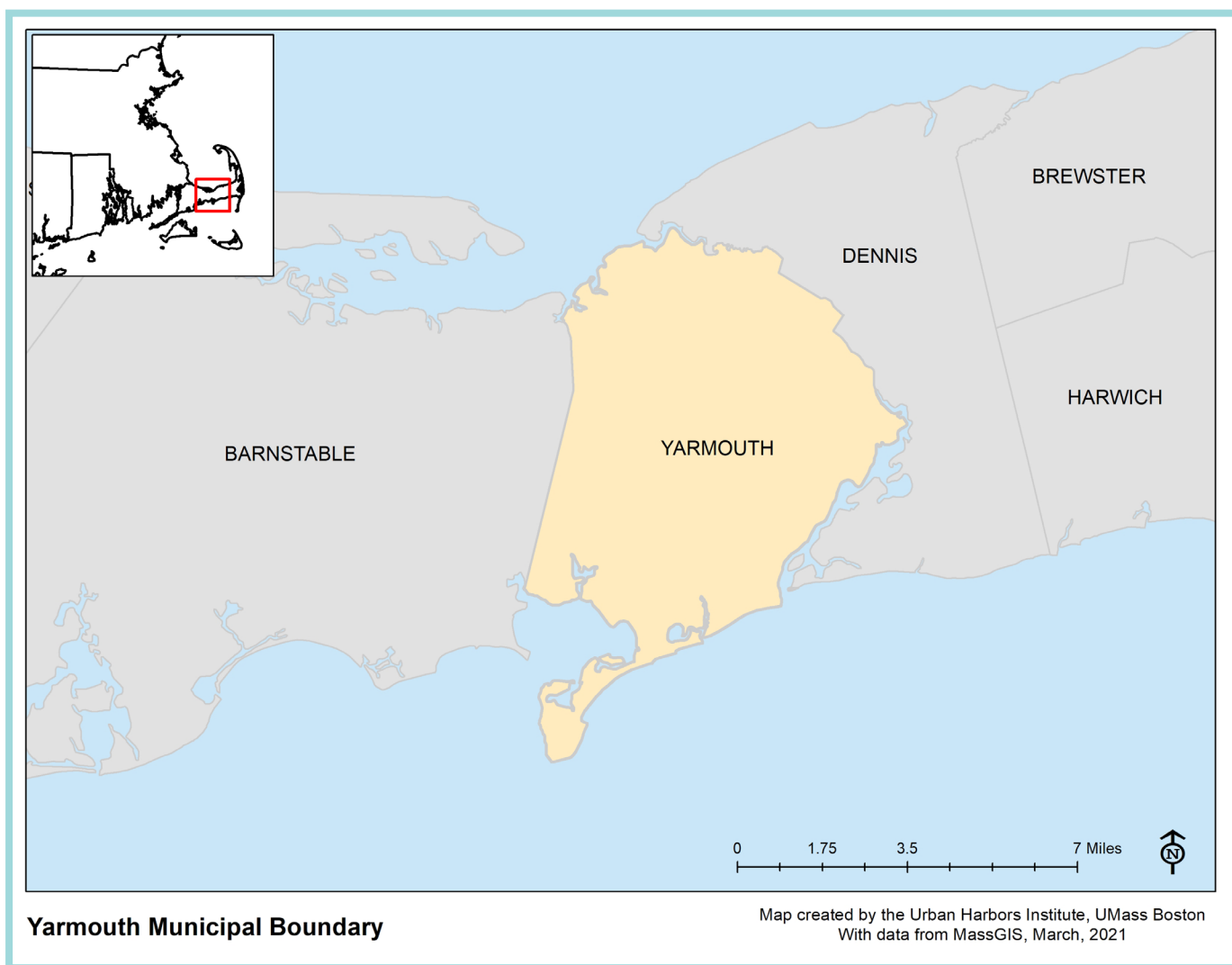
The **Massachusetts Commercial Fishing Port Profiles** were developed through a collaboration between the Massachusetts Division of Marine Fisheries, the University of Massachusetts Boston's Urban Harbors Institute, and the Cape Cod Commercial Fishermen's Alliance. Using data from commercial regional permits, the Atlantic Coastal Cooperative Statistics Program's (ACCSP) Standard Atlantic Fisheries Information System (SAFIS) Dealer Database, and harbormaster and fishermen surveys, these profiles provide an overview of the commercial fishing activity and infrastructure within each municipality. The Port Profiles are part of a larger report which describes the status of the Commonwealth's commercial fishing and port infrastructure, as well as how profile data can inform policy, programming, funding, infrastructure improvements, and other important industry-related decisions.

For the full report, visit the Massachusetts Division of Marine Fisheries website.



URBAN HARBORS INSTITUTE
UNIVERSITY OF MASSACHUSETTS BOSTON





Key Terms:

Permitted Harvesters: Commercially permitted harvesters residing in the municipality

Vessels: Commercially permitted vessels with the municipality listed as the homeport

Trips: Discrete commercial trips unloading fish or shellfish in this municipality

Active Permitted Harvesters: Commercially permitted harvesters with at least one reported transaction in a given year

Active Dealers: Permitted dealers with at least one reported purchase from a harvester in a given year

Ex-Vessel Value: Total amount (\$) paid directly to permitted harvesters by dealers at the first point of sale

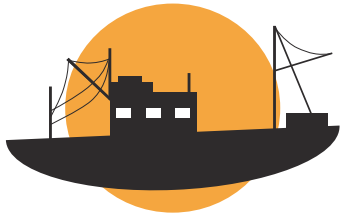
YARMOUTH

Located on Cape Cod, Yarmouth has two main harbors: Bass River and Lewis Bay. Permitted commercial fisheries, which may or may not have been active during the survey period, include:

- Fish Trap/Pot
- Harpoon
- Hand-lines
- Shellfish (by hand)
- Rod & Reel
- For Hire/ Charter

2018 Overview

Source: DMF Permitting and Statistics Data; ACCSP Data Warehouse



Yarmouth's commercial fishery had:

- 8** permitted harvesters with a Yarmouth address
- 41** vessels with a Yarmouth homeport
- 1,929** trips landing in Yarmouth
- 269** active permitted harvesters landing in Yarmouth
- 24** active dealers purchasing in Yarmouth



Commercial harvesters landed the following in Yarmouth in 2018:

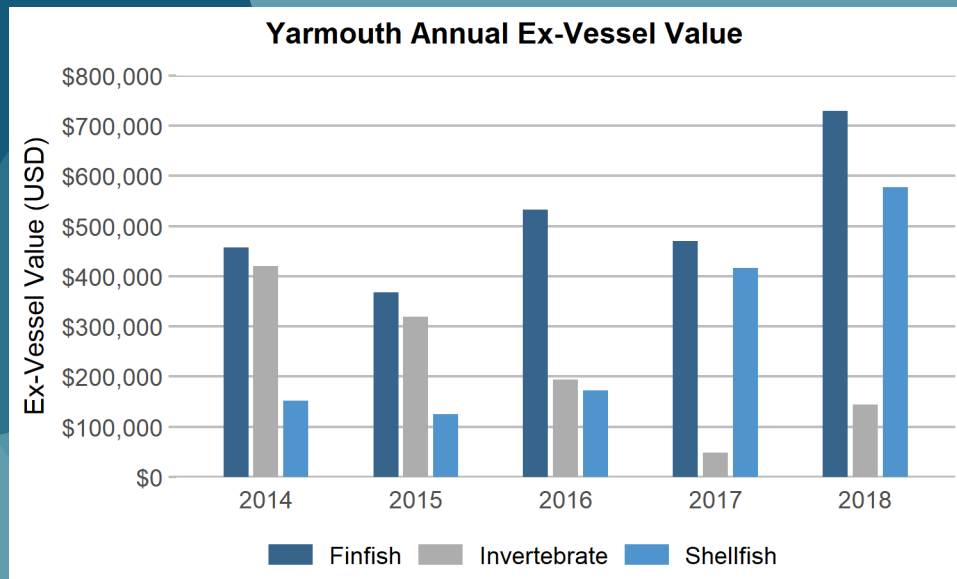
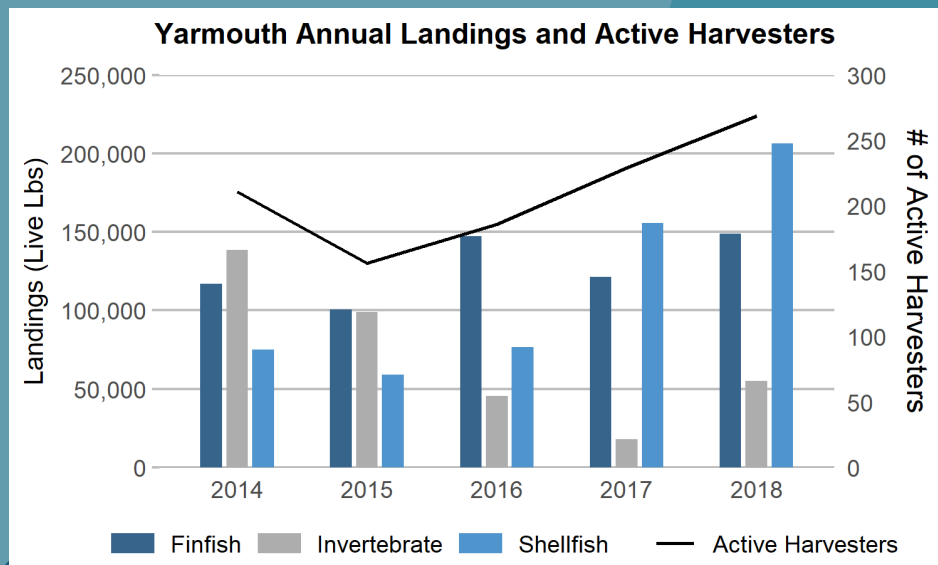
410,436 pounds of catch with an ex-vessel value of **\$1,452,372**

The top-ranked species, by dollar value, landed between 2014-2018 included:

- Striped Bass
- Eastern Oyster
- Conch

5 Year Trends in Commercial Landings and Value

Source: DMF Permitting and Statistics Data; ACCSP Data Warehouse



Status of the Commercial Fishing Industry

Source: 2019 Harbormaster and Harvester Survey Data

In the last 10 years, Yarmouth has seen an increase in the aquaculture industry and small boat commercial fishery, resulting in more vehicles and usage of the State and Town boat ramps. The number of commercial fishing vessels (pot, trap, hand-line, rod and reel, harpoon and for hire) has declined slightly. Yarmouth's commercial fishing fleet consists of trailered, moored and docked, and offshore vessels.

Commercial Fishing Infrastructure



Infrastructure upgrades in last ten years:

- New floats and docks



Current infrastructure Challenges

- Shallow water/need for dredging
- Limited parking
- Small area for the hoist
- Expensive dock space and wait list

Needs

- Dredge Bass River annually
- Upgrades to pier at municipal marina
- Electrical upgrades and lighting
- Additional parking
- Bait storage
- Gear and bait storage



Infrastructure dedicated solely to commercial fishermen:

- Moorings: None
- Slips: The municipal marina offers 8 slips to year-round commercial fishermen
- Broadside berthing: None



In 2018, the municipality charged for the following services:

- Moorings: Size slots (\$200, \$225, \$250, \$275, \$300 per year)
- Slips: \$130/foot per year



Type of Infrastructure	Available?
Ice	
Bait storage	
Trash disposal	
Commerical offloading	
Hoist	
Dock space	
Gear storage	
Mooring space	
Fueling stations	
Vessel repair	
Launch ramp	
Parking for fishermen	
Parking for seafood trucks	
Other	

= Available