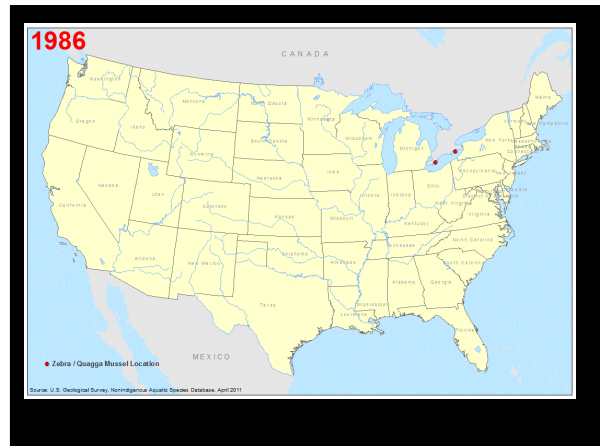



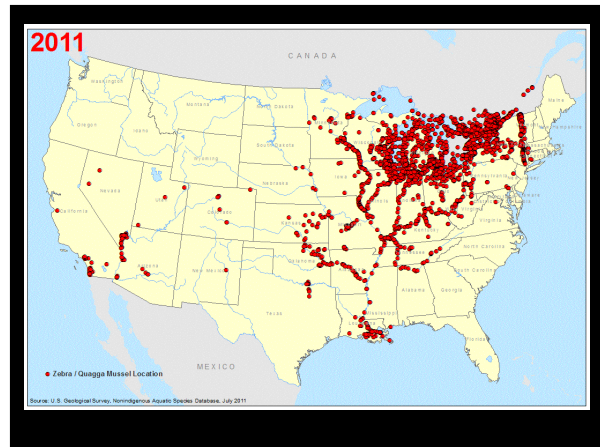
Zebra Mussel Update 2011



Jim Straub
Mass. Department of Conservation and Recreation
Lakes and Ponds Program
2011

Zebra Mussel Images

Impacts (Physical, Ecological, Economical)



Distribution Close to Home



- Lake Champlain (VT)
- Lake Bomoseen (VT)
- Hudson River (NY)
- Lake George (NY)
- Great Lakes Region (NY)
- Twin Lakes (CT)
- Lake Zoar (CT)
- Lake Lillinonah (CT)
- Laurel Lake (MA)

Volunteer-Based Zebra and Quagga Mussel Education, Outreach, and Monitoring Program (2008-Present)



Laurel Lake Images 2008



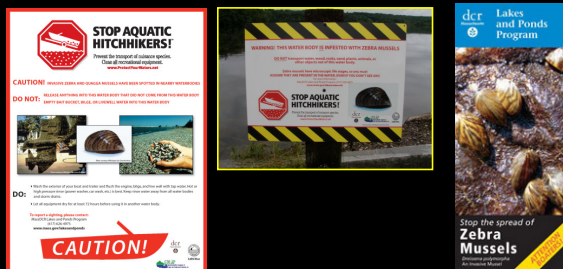
Veliger Sampling and Training



Laurel Lake Cont...



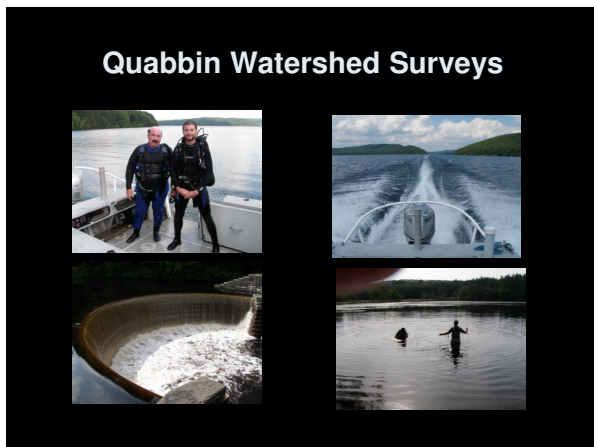
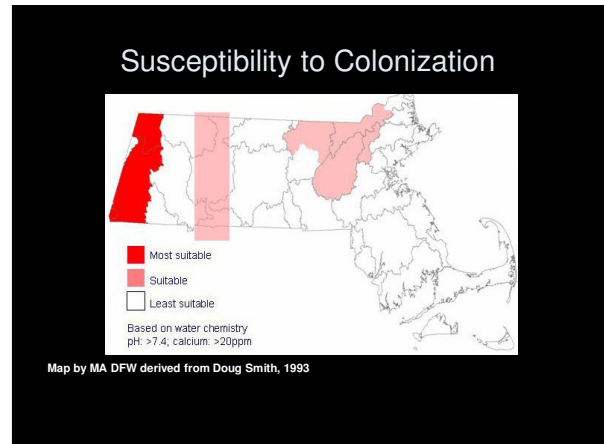
Signs and Brochures



Laurel Lake 2011

- Exponential increase
- Expanding distribution throughout lake



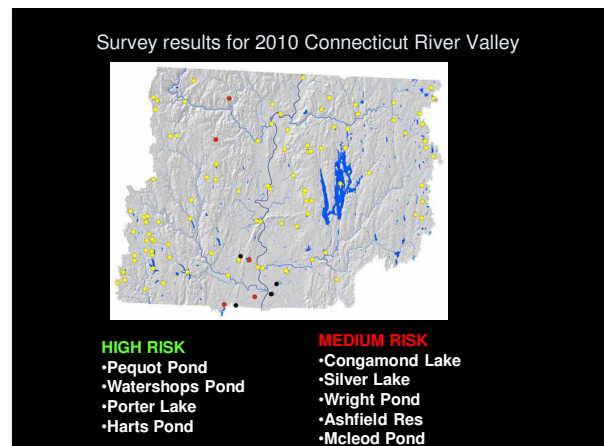


Survey Results for Berkshire Regions

- Adults, juveniles, and veligers now documented in Laurel Lake, Laurel Brook, and the Housatonic River
- Very low densities in the Housatonic, but adults found up to 7.5 miles downstream

Requirements at Public Access Ramps in the Housatonic and Hoosic Watersheds

- Signage
- Educational Materials
- Decontamination
 - Clean, Drain, Dry
- Boat Ramp Monitoring
- Clean Boat Certification



2011 Next Steps

- DCR Purchased and installed Boat wash station at contaminated lake
- Washed boats leaving
- Surveyed High Risk lakes again (no new infestations)



Regional Response

- Stockbridge Bowl Association building wash facility at ramp
- Towns of Richmond & Pittsfield hiring BRM
- Road signage



Questions?



Jim Straub
MA DCR Lakes and Ponds Program

WWW.MASS.GOV/LAKESANDPONDS