

ENFÒMASYON POU MOUN KI SOUD OSWA KI MAL POU TANDE - KOWONAVIRIS

► Commonwealth of Massachusetts

<https://mass.gov/covid19>

► Biwo Egzekitif nan Sèvis Sante ak Imen

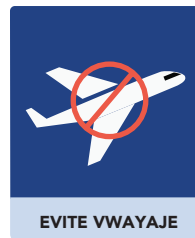
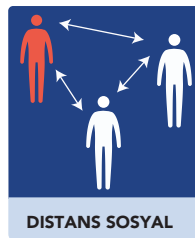
<https://mass.gov/eohhs>
call: Dial 211

► Komisyon Massachusetts pou Moun ki Soud oswa ki Mal pou Tande

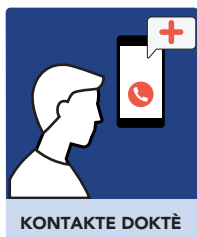
<https://mass.gov/mcdhh>
email: MCDsafety@mass.gov



ANPECHE MALADI



JWENN ÈD MEDIKAL



METÒD KOMINIKASYON OU PITO A



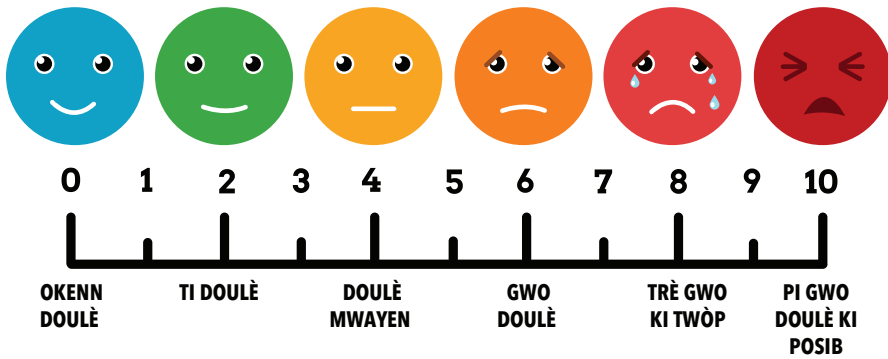
KOMINIKASYON RAPID



KONSÈY POU FOUNISÈ SWEN SANTE

- Atire atansyon moun lan epi fè kontak zye
- Repete, redi yon lòt jan oubyen ekri demand ou an
- Mande epi/oswa endike anvan ou pral manyen moun lan
- Mande moun lan ki metòd komunikasyon li pito
- Redwi kantite moun k ap entèyaji ak pasyan an
- Konnen ke aparèy pou tande/enplan cochlear yo gendwa amelyore kapasite yon moun pou l tande, men li gendwa toujou bezwen yon aparèy pou ede l tande epi li gendwa toujou pa ka konprann tout sa w ap di a.

KIJAN OU SANTI W?



DEPI KONBYEN TAN OU GEN SENTÒM SA YO?

► MINIT

► ÈDTAN

► JOU

► SEMÈN

► MWA

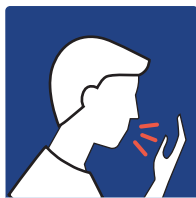
► ANE



SITIYASYON, ISTWA AK SENTÒM YO



LAFYÈV



TOUSE



SOUF KOUT



GÒJ FÈ MAL



MALTÈT



METE YON MASK



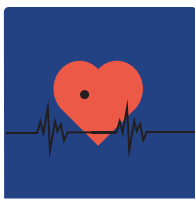
VOMI



DYARE



TANSYON



MALADI KÈ



ISTWA TOUT DEPLASMAN.VWAYAJ

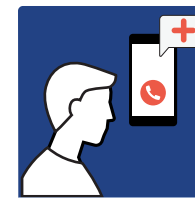


MANM FANMI KI MALAD

TRETMAN AK SWEN



ESTAF MEDIKAL



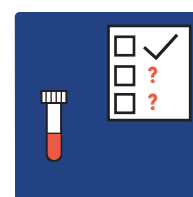
DOKTÈ POU KONTAKTE A



ANBILANS



LOPITAL



TÈS MEDIKAL



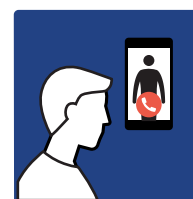
OKSIJÈN



PONP/INALATÈ



MEDIKAMAN



FANMI POU KONTAKTE



RANDEVOU



RETE LAKAY OU



JETE KLINÈKS LAVÈ MEN

► SE KOMISYON POU MOUN KI SOUD OSWA KI MAL POU TANDE (MASSACHUSETTS COMMISSION FOR THE DEAF AND HARD OF HEARING) KI DEVLOPE DOKIMAN SA A ► [HTTPS://MASS.GOV](https://mass.gov)

Konsèy sou Andikap Wisconsin (Wisconsin Council on Disabilities) te itilize sètèn eleman nan zouti sa a.

March 2020