



David E. Pierce
Director

Commonwealth of Massachusetts

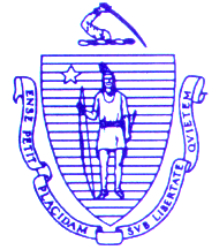
Division of Marine Fisheries

251 Causeway Street, Suite 400

Boston, Massachusetts 02114

(617)626-1520

fax (617)626-1509



Charles D. Baker
Governor

Karyn E. Polito
Lieutenant Governor

Matthew A. Beaton
Secretary

George N. Peterson, Jr.
Commissioner

Mary-Lee King
Deputy Commissioner

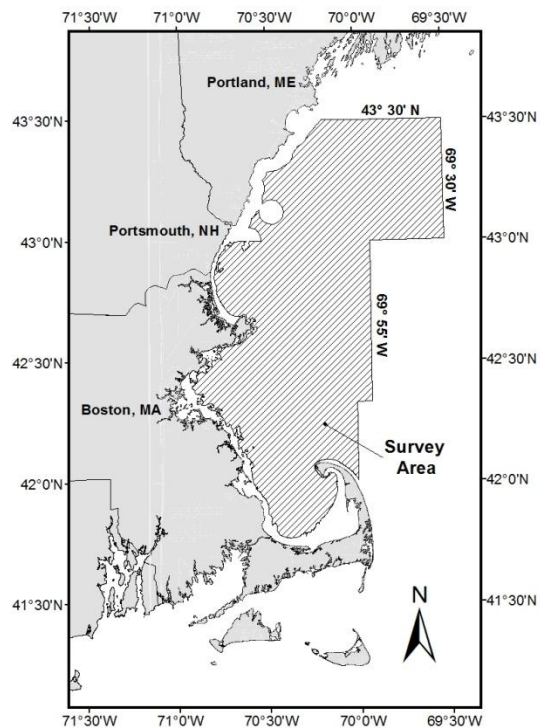
Notice to Fixed Gear Fishermen

Industry-Based Survey for Gulf of Maine Cod

The Massachusetts Division of Marine Fisheries (MA DMF) is continuing the collaborative research effort with the commercial groundfish industry to establish an industry-based trawl survey (IBS) to study Gulf of Maine (GOM) cod.

The purpose of the study is to collect biological information, abundance estimates, and distribution information with the goal of providing additional information to help inform management and support stock assessments. Although the primary species of focus is GOM cod, additional data will be collected to enhance the management of other **groundfish** and **lobster** stocks within the GOM.

The survey will start again in April and end in July 2017. It is a stratified-random design and stations occur from 10 fathoms to 100 fathoms. The area to be surveyed includes Massachusetts and New Hampshire state waters and federal waters that extend from Cape Elizabeth, south to Cape Cod Bay. In waters between latitude 43°0' and 43°30' the strata extend as far east as longitude 69°30'. In waters south of latitude 43°0' the survey extends to the eastern boundary of the Western Gulf of Maine closure (69°55').



The survey vessel will be completing tows that are 200 feet wide and 1.5 nautical miles long and as close as possible to the designated stations. Many of the tows are not straight line tows; rather they follow an edge or substrate type. Massachusetts Division of Marine Fisheries **requests fishermen to voluntarily assist by temporarily clearing the stations of fixed gear** during the designated time period. Attached are several tables and maps that detail tow locations of upcoming survey cruises.

The vessel selected for the survey is the **F/V Miss Emily**, a western rigged stern trawler based out of Scituate, MA. The vessel details are below:

Vessel Name	Hull Number	Hull Color	Captain	Vessel Phone
Miss Emily	MS2892BE	Green	Kevin Norton	(781) 801-8888

During the survey the F/V Miss Emily can be reached on **VHF Channel 16** or on vessel cell phone number shown in the table above.

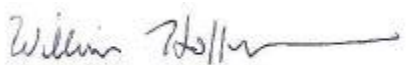
The IBS text message alert system is the most effective method of receiving real-time updates. Users of this system will receive messages detailing the progress and schedule of the survey by region. To sign up for this service visit the MA DMF website and visit the Industry-Based Survey of Gulf of Maine Cod project page, click the text message alerts link, and complete the [Google signup form](#). If you would like assistance signing up, call Bill Hoffman at 978-282-0308 ext. 106.

Please note that the survey schedule may be affected by adverse weather conditions. Updates identifying when tows are planned and completed will be available from the following resources:

- Visit the Massachusetts Division of Marine Fisheries website (<http://www.mass.gov/marinefisheries>) and proceed to the [Industry-Based Survey for Gulf of Maine Cod](#) project page.
- Real-time text alerts with planned and completed tows.
- Announcements made on VHF Channel 16 the morning of each day that the survey is being conducted.
- Massachusetts Division of Marine Fisheries social media accounts.
- Contact William Hoffman at Massachusetts Division of Marine Fisheries at [\(978\) 282-0308 ext. 106](#).
- Contact the F/V Miss Emily directly via VHF radio or vessel cell phone.

Massachusetts Division of Marine Fisheries thanks all fishermen for past and future cooperation. Through these efforts we are very optimistic that a successful survey can be achieved, resulting in improved stock assessments and improved fisheries management.

Thank you,



William Hoffman
Co-Principle Investigator
Senior Fisheries Biologist



Micah Dean
Co-Principle Investigator
Senior Fisheries Biologist

Industry Based Survey Tow Locations - April 2017

TOW	LAT	LON
36	43 28.269	69 45.499
37	43 02.541	69 49.330
38	43 05.240	69 39.014
39	43 01.732	69 35.511
40	43 18.505	69 46.808
41	43 19.200	69 53.198
42	43 00.967	69 42.407
43	43 14.662	69 53.945
44	43 23.629	69 45.211
45	43 25.080	70 01.906
46	43 03.474	70 24.818
47	43 18.655	70 14.987
48	43 23.501	70 08.343
49	43 13.595	70 18.242
50	43 27.663	70 10.461

NOTE C PRECAUTIONARY AREAS

Traffic within the Precautionary Areas may consist of vessels operating between Portland Harbor or Boston Harbor and one of the established traffic lanes. Mariners are advised to exercise extreme care in navigating within these areas.

NOTE E
Trawlers or other vessels should exercise caution while dragging the ocean floor within a 6.7 - mile radius of Isles of Shoals Light since it is known that JATO racks and associated debris exist in the area.

NOTE J
DEEPWATER PORTS
The Neptune and Northeast Gateway Deepwater Ports are encompassed by multiple boundaries including an Area to Be Avoided, No Anchoring Areas, Regulated Navigation Areas, and Safety and Security Zones. Refer to chart 13267.

NOTE F (Protected area 15 CFR 922)

The following activities are prohibited within the Stellwagen Bank Marine Sanctuary:

- Certain discharging or dumping
- Industrial exploring or developing
- Drilling and dredging
- Removing historical artifacts
- Lighting

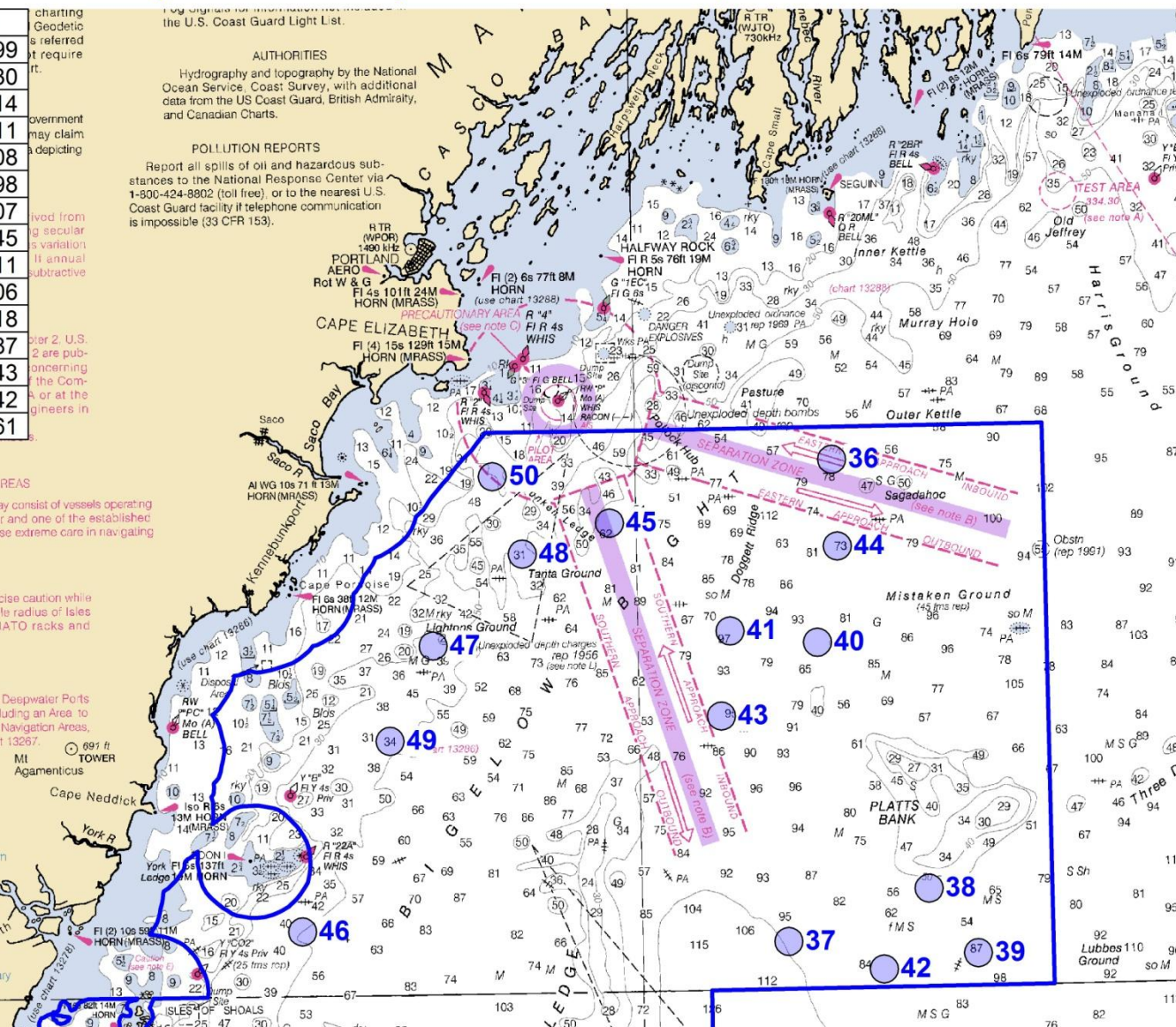
Refer to 15 CFR 922 for details of Sanctuary regulations.

Hydrography and topography by the National Ocean Service, Coast Survey, with additional data from the US Coast Guard, British Admiralty, and Canadian Charts.

AUTHORITIES
Hydrography and topography by the National Ocean Service, Coast Survey, with additional data from the US Coast Guard, British Admiralty, and Canadian Charts.

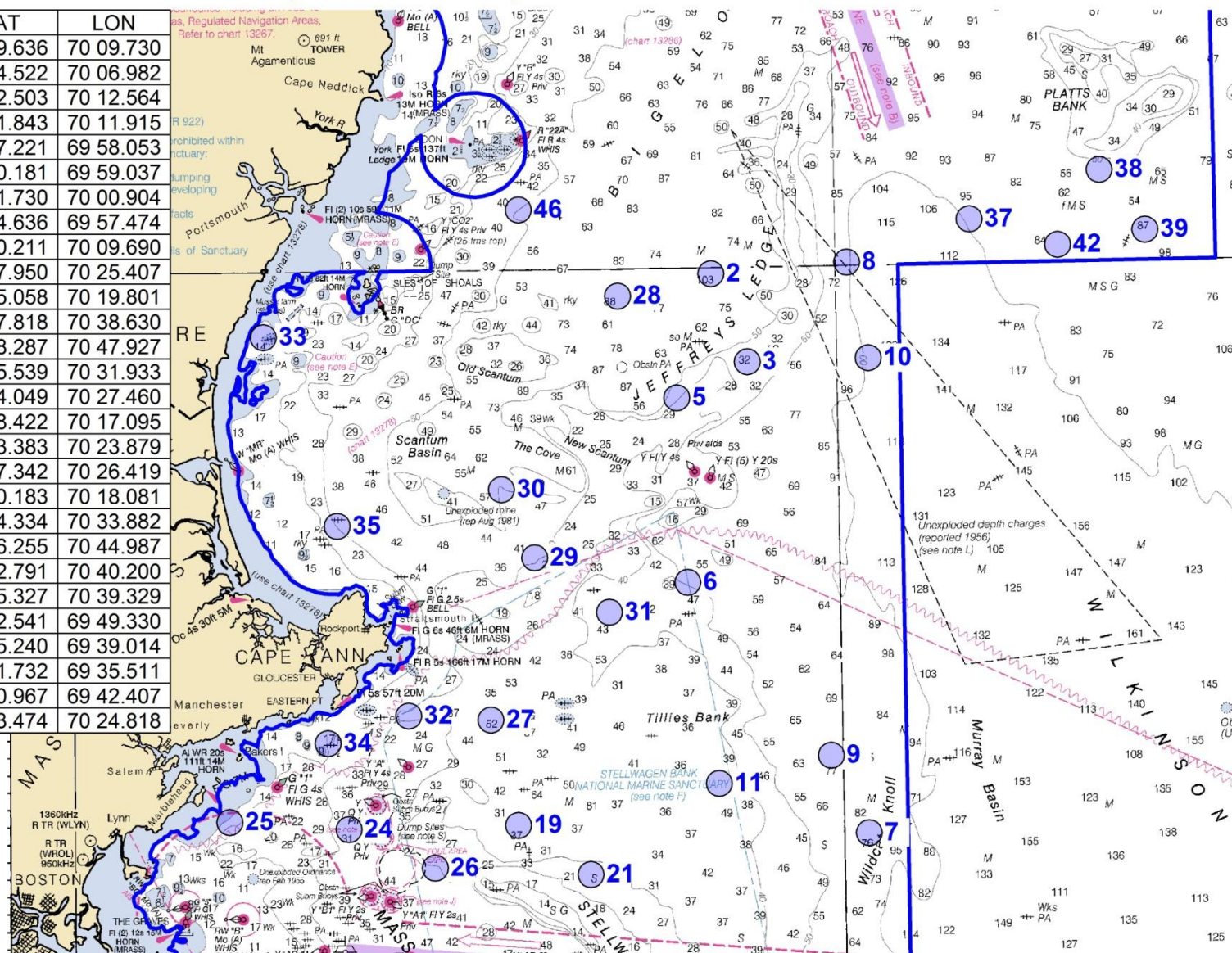
POLLUTION REPORTS

Report all spills of oil and hazardous substances to the National Response Center via 1-800-424-8802 (toll free), or to the nearest U.S. Coast Guard facility if telephone communication is impossible (33 CFR 153).

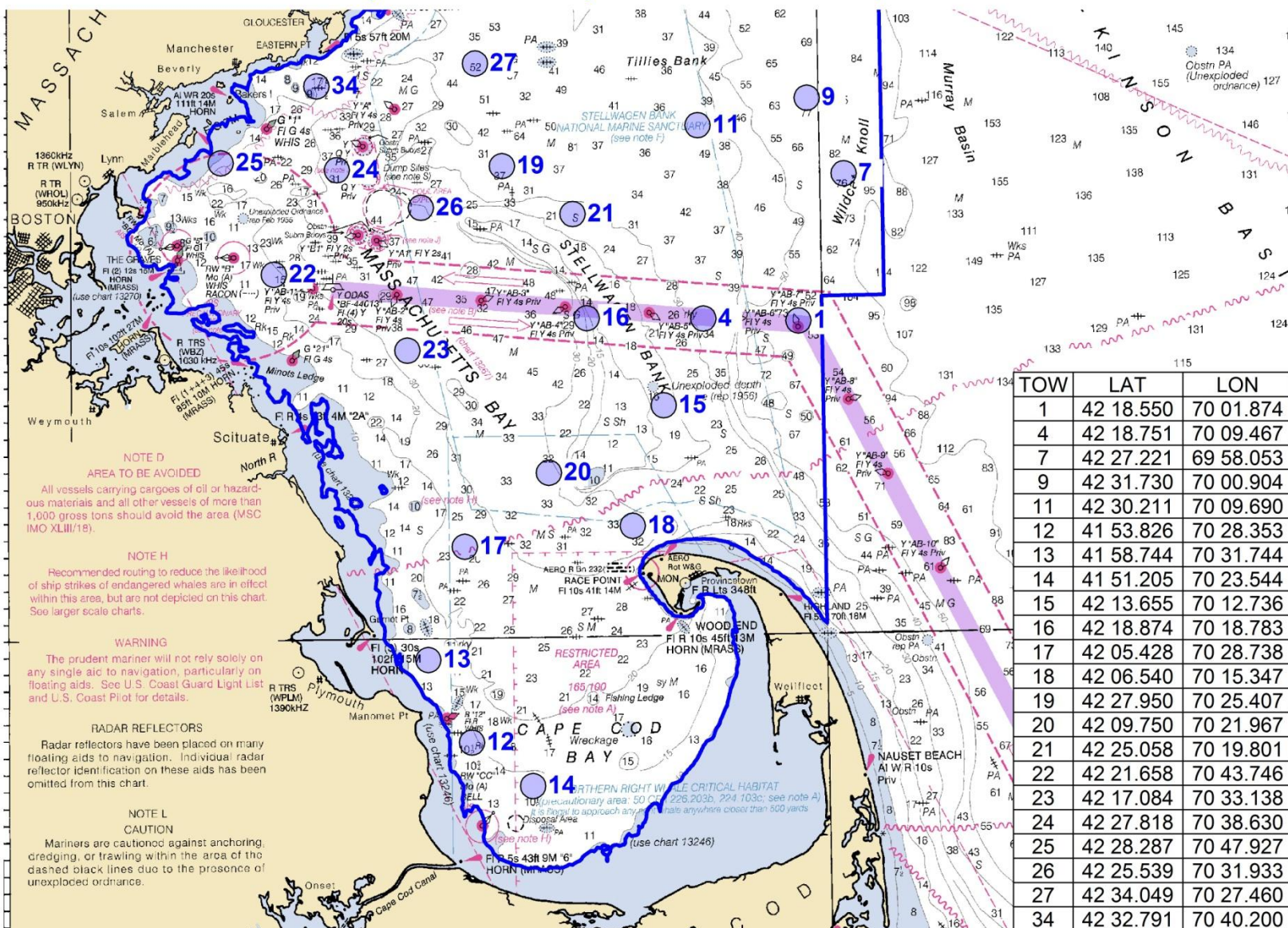


Industry Based Survey Tow Locations - April 2017

TOW	LAT	LON
2	42 59.636	70 09.730
3	42 54.522	70 06.982
5	42 52.503	70 12.564
6	42 41.843	70 11.915
7	42 27.221	69 58.053
8	43 00.181	69 59.037
9	42 31.730	70 00.904
10	42 54.636	69 57.474
11	42 30.211	70 09.690
19	42 27.950	70 25.407
21	42 25.058	70 19.801
24	42 27.818	70 38.630
25	42 28.287	70 47.927
26	42 25.539	70 31.933
27	42 34.049	70 27.460
28	42 58.422	70 17.095
29	42 43.383	70 23.879
30	42 47.342	70 26.419
31	42 40.183	70 18.081
32	42 34.334	70 33.882
33	42 56.255	70 44.987
34	42 32.791	70 40.200
35	42 45.327	70 39.329
37	43 02.541	69 49.330
38	43 05.240	69 39.014
39	43 01.732	69 35.511
42	43 00.967	69 42.407
46	43 03.474	70 24.818



Industry Based Survey Tow Locations - April 2017



Industry Based Survey Tow Locations - May 2017

TOW	LAT	LON
3	43 01.808	70 01.984
6	43 05.638	70 13.433
9	43 04.776	70 07.567
36	43 05.132	69 36.875
37	43 12.204	69 33.651
38	43 18.025	69 55.964
39	43 27.505	69 57.664
40	43 28.491	69 32.231
41	43 17.846	69 49.622
42	43 12.718	69 49.854
43	43 12.634	69 43.112
44	43 24.407	69 40.433
45	43 23.680	70 10.460
46	43 05.420	70 19.871
47	43 17.695	70 12.681
48	43 28.146	70 11.756
49	43 04.277	70 33.265
50	43 21.760	70 02.246

traffic lanes. Mariners are advised to exercise extreme care in navigating within these areas.

NOTE E

Trawlers or other vessels should exercise caution while dragging the ocean floor within a 6.7 - mile radius of Isles of Shoals Light since it is known that JATO racks and associated debris exist in the area.

NOTE J

DEEPWATER PORTS
The Neptune and Northeast Gateway Deepwater Ports are encompassed by multiple boundaries including an Area to Be Avoided, No Anchoring Areas, Regulated Navigation Areas, and Safety and Security Zones. Refer to chart 13267.

NOTE F

(Protected area 15 CFR 922)
The following activities are prohibited within the Stellwagen Bank Marine Sanctuary:

- Certain discharging or dumping
- Industrial exploring or developing
- Drilling and dredging
- Removing historical artifacts
- Lighting

Refer to 15 CFR 922 for details of Sanctuary regulations.

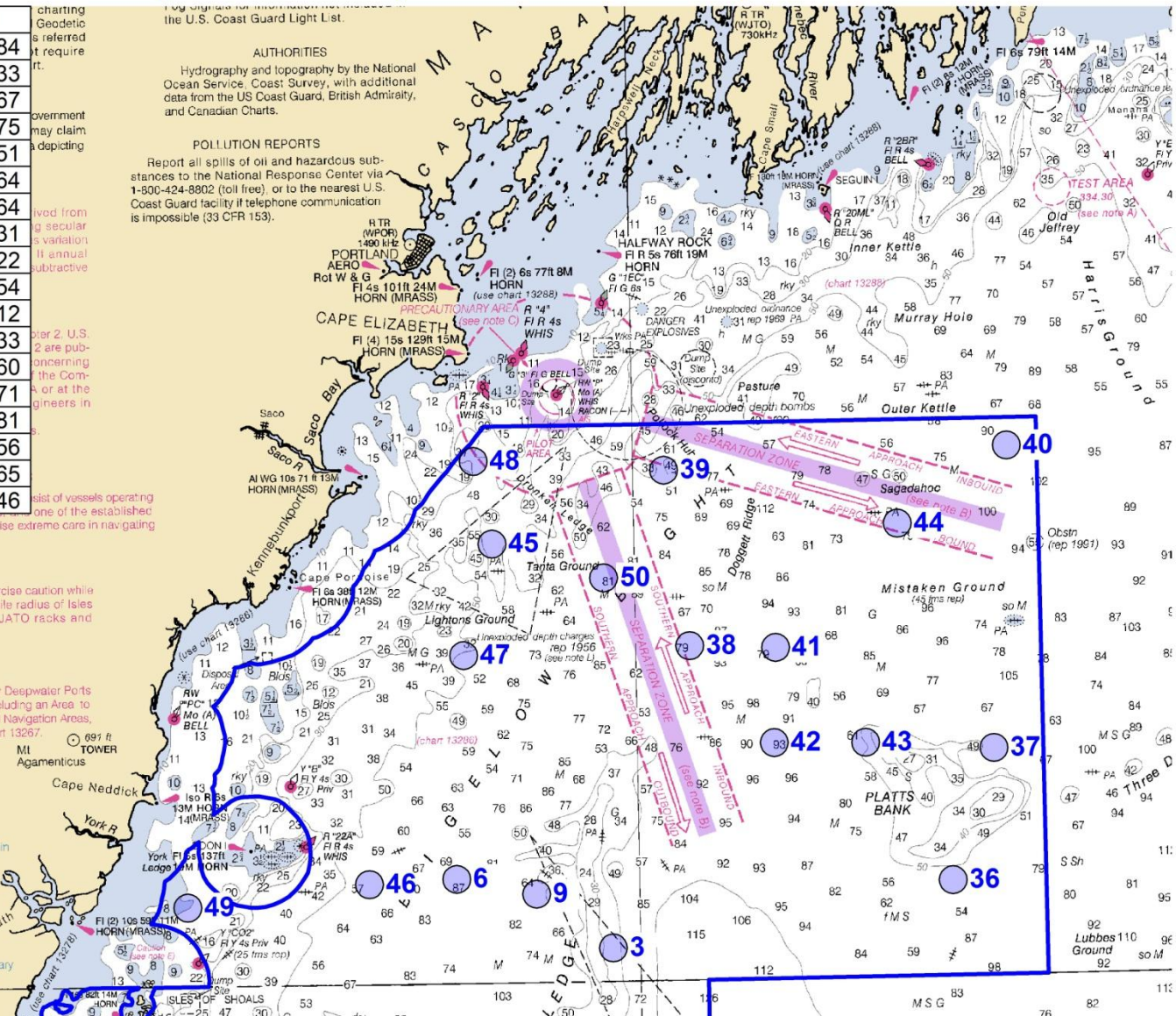
Hydrography and topography by the National Ocean Service, Coast Survey, with additional data from the US Coast Guard, British Admiralty, and Canadian Charts.

AUTHORITIES

Hydrography and topography by the National Ocean Service, Coast Survey, with additional data from the US Coast Guard, British Admiralty, and Canadian Charts.

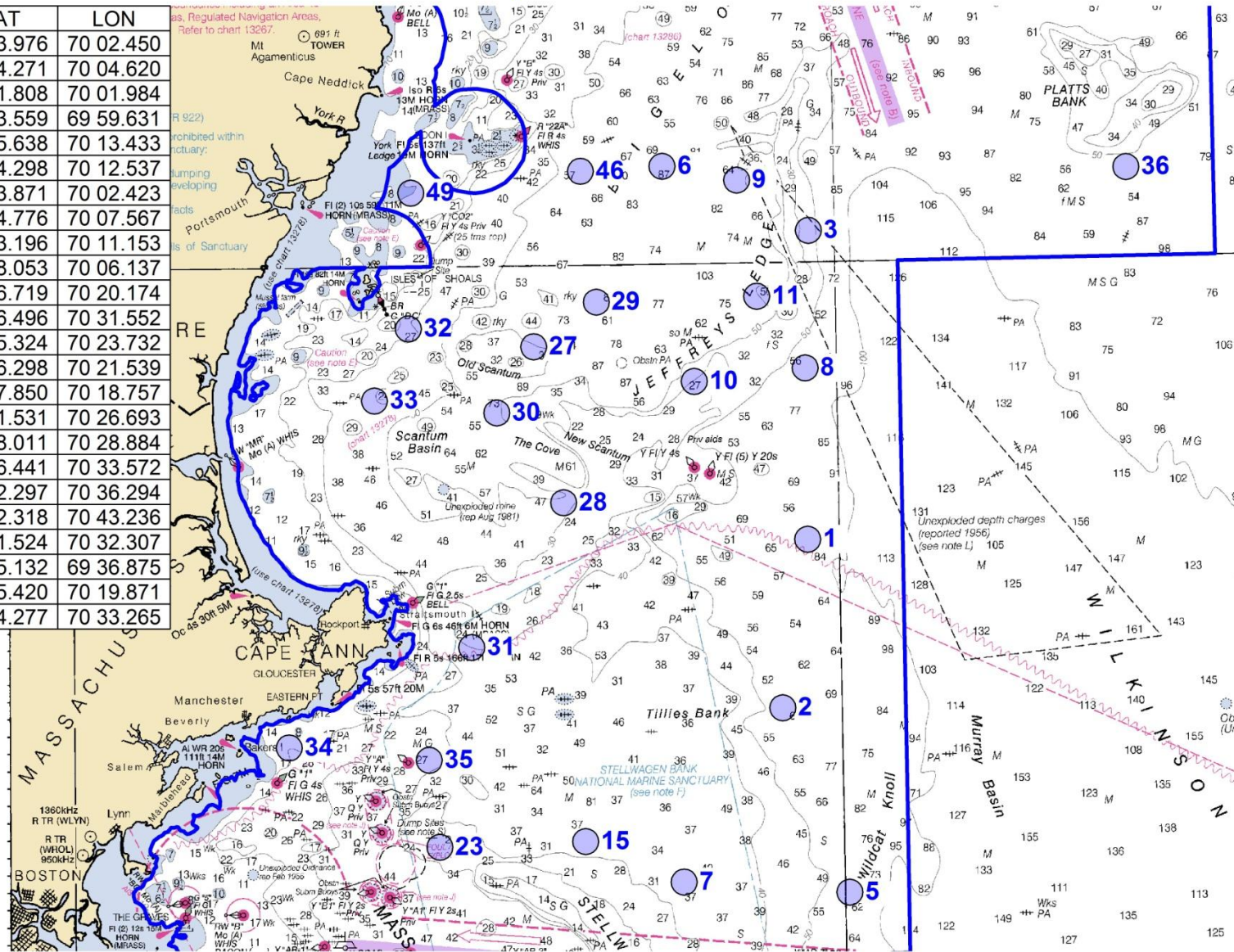
POLLUTION REPORTS

Report all spills of oil and hazardous substances to the National Response Center via 1-800-424-8802 (toll free), or to the nearest U.S. Coast Guard facility if telephone communication is impossible (33 CFR 153).

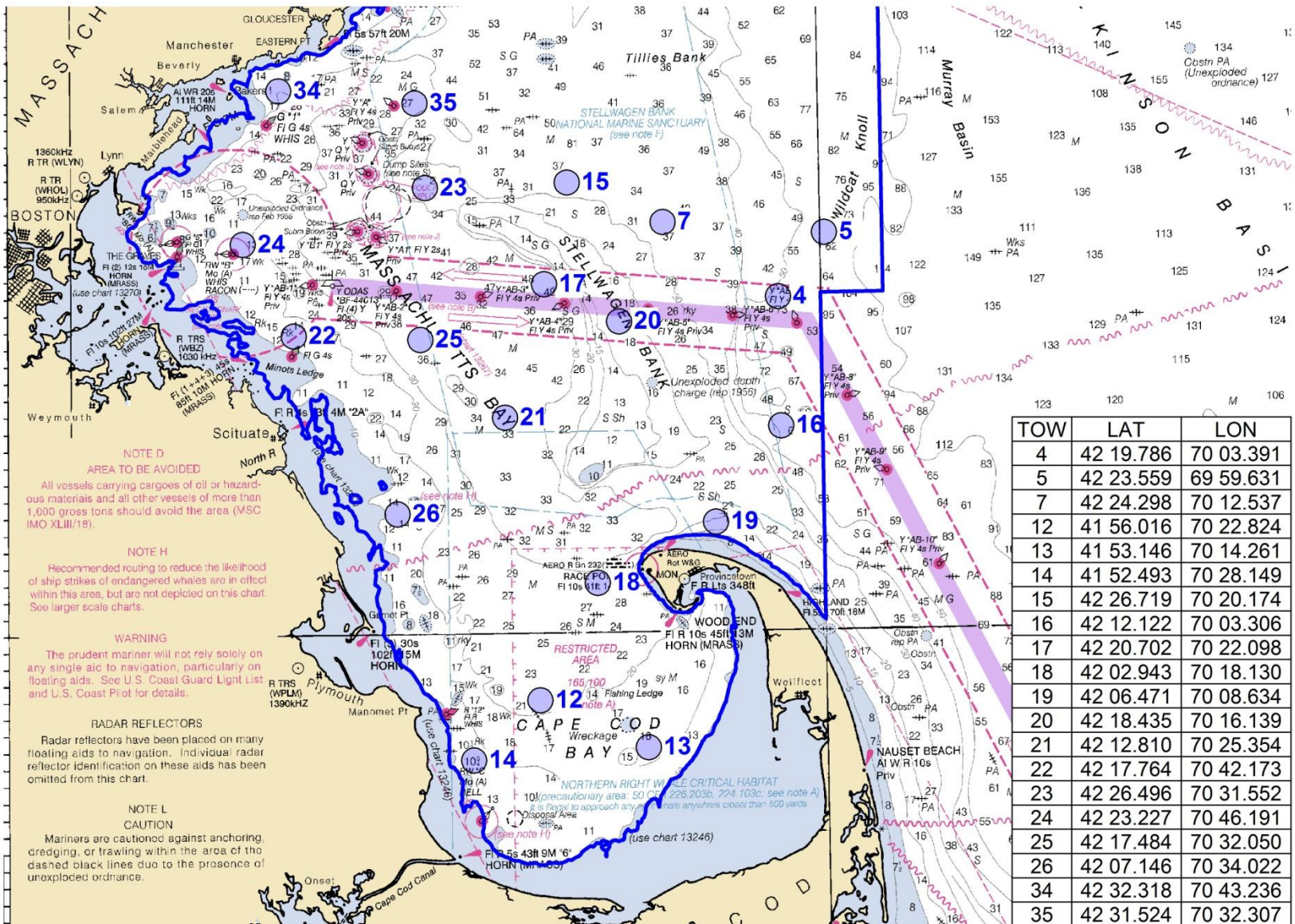


Industry Based Survey Tow Locations - May 2017

TOW	LAT	LON
1	42 43.976	70 02.450
2	42 34.271	70 04.620
3	43 01.808	70 01.984
5	42 23.559	69 59.631
6	43 05.638	70 13.433
7	42 24.298	70 12.537
8	42 53.871	70 02.423
9	43 04.776	70 07.567
10	42 53.196	70 11.153
11	42 58.053	70 06.137
15	42 26.719	70 20.174
23	42 26.496	70 31.552
27	42 55.324	70 23.732
28	42 46.298	70 21.539
29	42 57.850	70 18.757
30	42 51.531	70 26.693
31	42 38.011	70 28.884
32	42 56.441	70 33.572
33	42 52.297	70 36.294
34	42 32.318	70 43.236
35	42 31.524	70 32.307
36	43 05.132	69 36.875
46	43 05.420	70 19.871
49	43 04.277	70 33.265



Industry Based Survey Tow Locations - May 2017



Industry Based Survey Tow Locations - June 2017

TOW	LAT	LON
1	43 12.637	70 16.073
2	43 21.451	70 05.282
3	43 23.363	70 12.934
4	43 22.143	70 18.669
5	43 27.570	70 08.933
6	43 15.823	70 27.689
7	43 19.722	69 50.342
8	43 15.171	69 47.048
9	43 21.495	69 37.048
10	43 07.755	69 31.223
11	43 09.280	69 38.258
12	43 24.667	69 54.306
13	43 14.867	69 31.404
14	43 25.278	69 33.491
15	43 16.020	69 39.233
42	43 12.826	70 09.729
44	43 10.183	70 02.938
48	43 09.230	69 57.038

NOTE D: The charted traffic lanes. Mariners are advised to exercise extreme care in navigating within these areas.

NOTE E: Trawlers or other vessels should exercise caution while dragging the ocean floor within a 6.7 - mile radius of Isles of Shoals Light since it is known that JATO racks and associated debris exist in the area.

NOTE J: DEEPWATER PORTS
The Neptune and Northeast Gateway Deepwater Ports are encompassed by multiple boundaries including an Area to Be Avoided, No Anchoring Areas, Regulated Navigation Areas, and Safety and Security Zones. Refer to chart 13267.

NOTE F: (Protected area 15 CFR 922)
The following activities are prohibited within the Stellwagen Bank Marine Sanctuary:

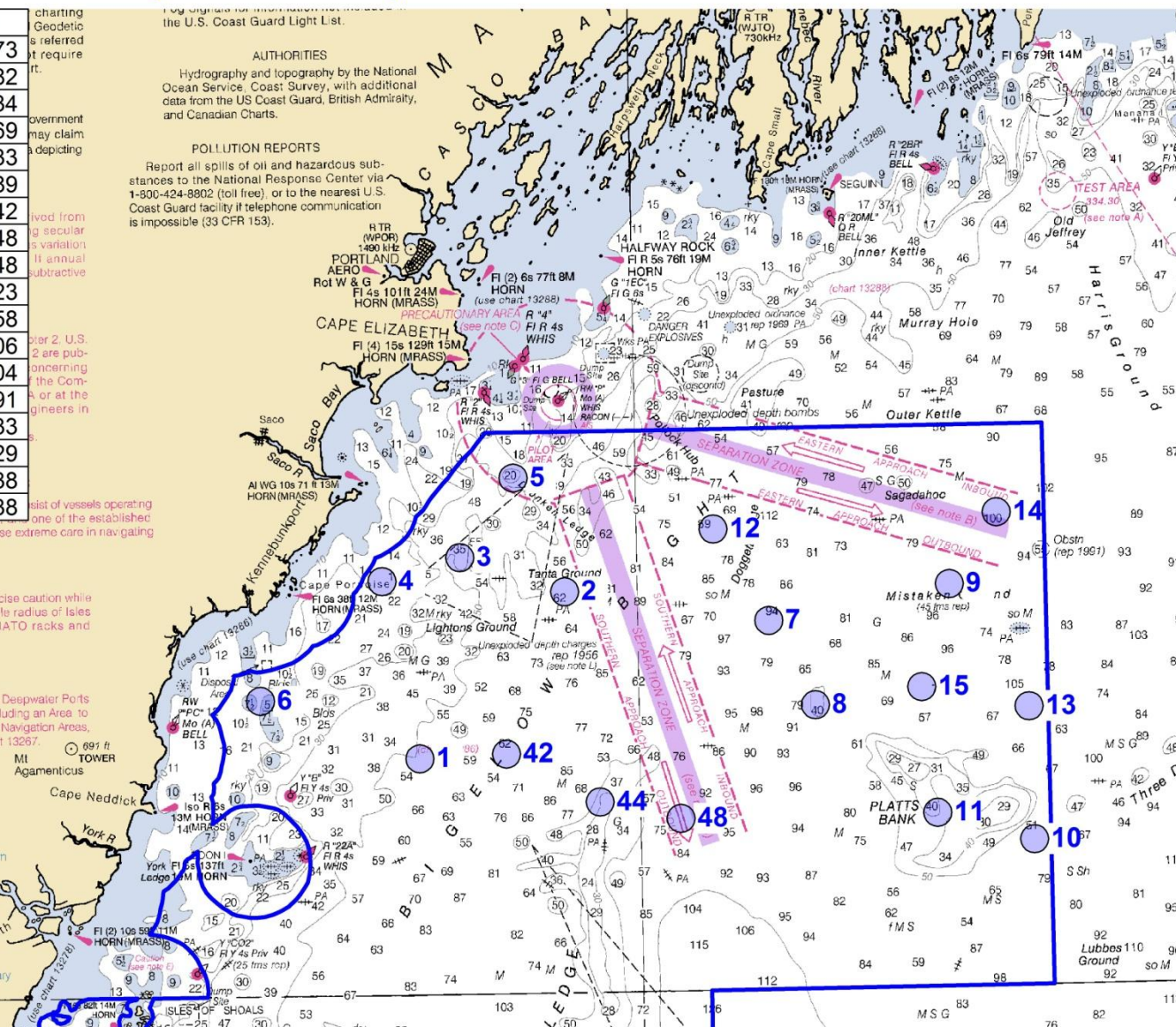
- Certain discharging or dumping
- Industrial exploring or developing
- Drilling and dredging
- Removing historical artifacts
- Lighting

Refer to 15 CFR 922 for details of Sanctuary regulations.

Charting Geodetic referred to require it.

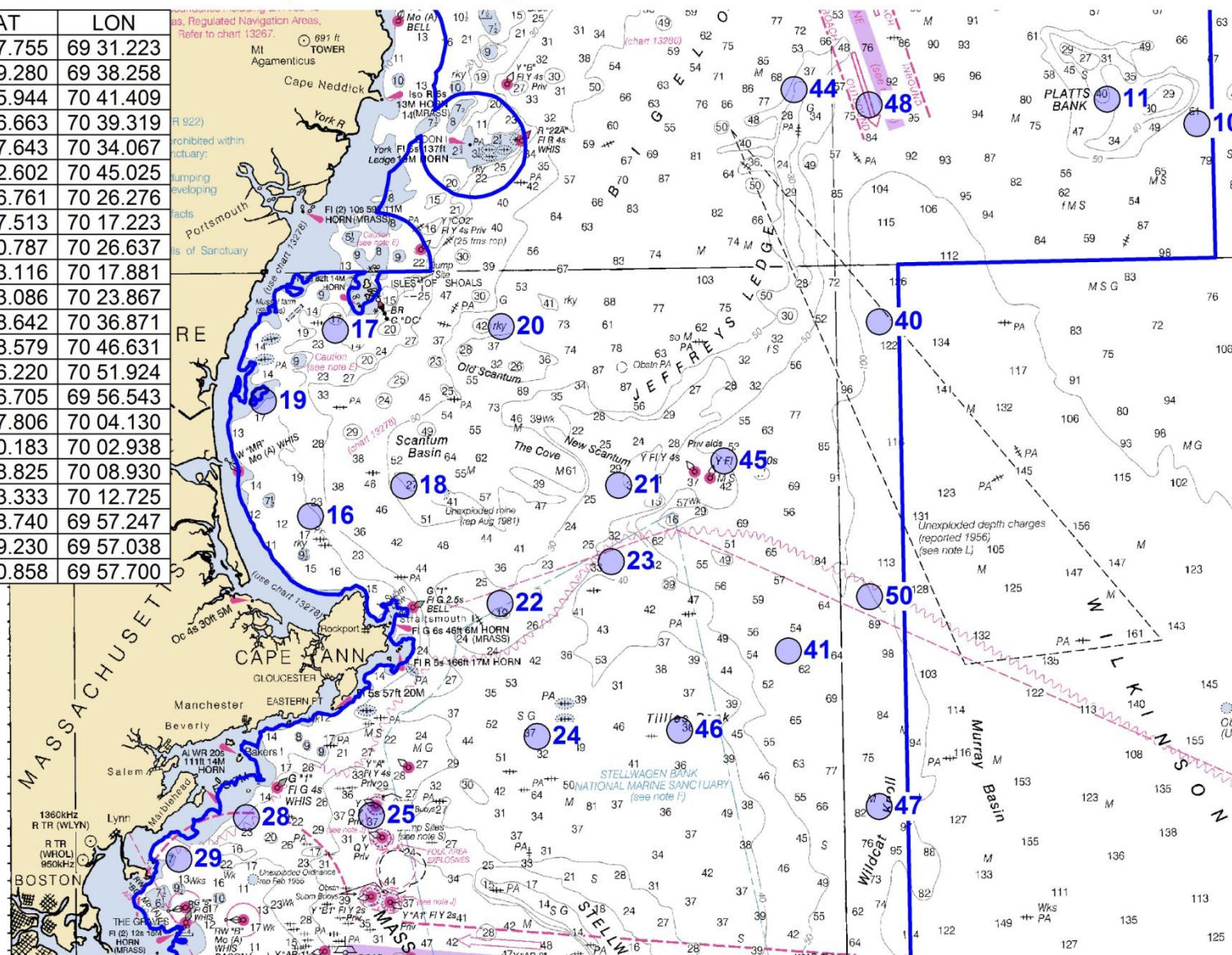
AUTHORITIES
Hydrography and topography by the National Ocean Service, Coast Survey, with additional data from the US Coast Guard, British Admiralty, and Canadian Charts.

POLLUTION REPORTS
Report all spills of oil and hazardous substances to the National Response Center via 1-800-424-8802 (toll free), or to the nearest U.S. Coast Guard facility if telephone communication is impossible (33 CFR 153).

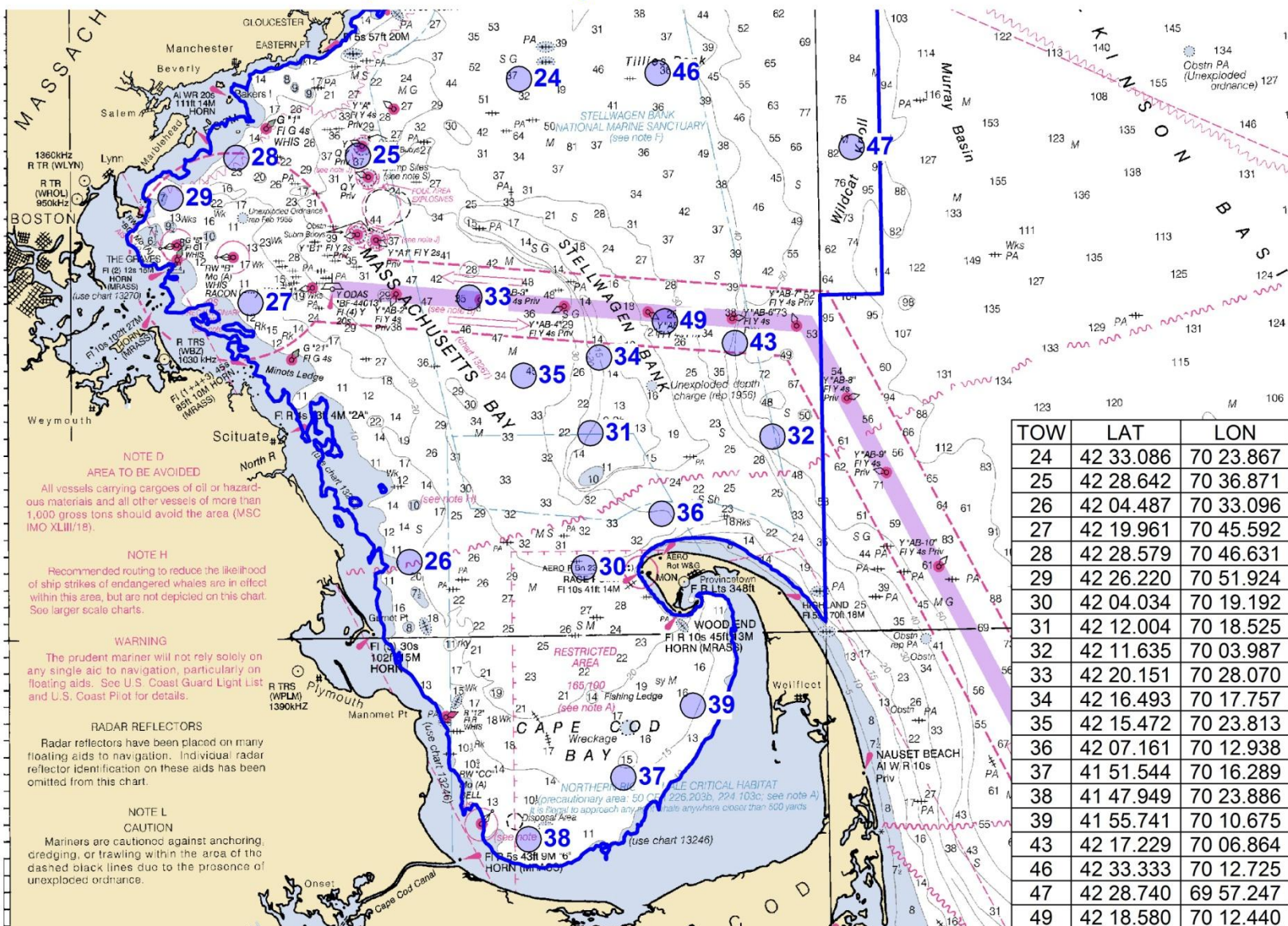


Industry Based Survey Tow Locations - June 2017

TOW	LAT	LON
10	43 07.755	69 31.223
11	43 09.280	69 38.258
16	42 45.944	70 41.409
17	42 56.663	70 39.319
18	42 47.643	70 34.067
19	42 52.602	70 45.025
20	42 56.761	70 26.276
21	42 47.513	70 17.223
22	42 40.787	70 26.637
23	42 43.116	70 17.881
24	42 33.086	70 23.867
25	42 28.642	70 36.871
28	42 28.579	70 46.631
29	42 26.220	70 51.924
40	42 56.705	69 56.543
41	42 37.806	70 04.130
44	43 10.183	70 02.938
45	42 48.825	70 08.930
46	42 33.333	70 12.725
47	42 28.740	69 57.247
48	43 09.230	69 57.038
50	42 40.858	69 57.700



Industry Based Survey Tow Locations - June 2017



Industry Based Survey Tow Locations - July 2017

TOW	LAT	LON
1	43 16.509	70 27.938
2	43 03.842	70 21.741
3	43 28.652	70 01.544
4	43 26.179	70 06.736
5	43 20.921	70 19.169
6	43 24.771	70 15.324
7	43 25.495	69 57.165
8	43 09.251	69 45.451
9	43 18.803	69 37.740
10	43 02.939	69 51.532
11	43 19.680	69 58.004
12	43 13.797	69 31.410
13	43 20.122	69 45.123
14	43 28.401	69 41.263
15	43 28.594	69 50.848
40	43 06.609	70 06.365

NOTE C
PRECAUTIONARY AREAS
Traffic within the Precautionary Areas may consist of vessels operating between Portland Harbor or Boston Harbor and one of the established traffic lanes. Mariners are advised to exercise extreme care in navigating within these areas.

NOTE E
Trawlers or other vessels should exercise caution while dragging the ocean floor within a 6.7 - mile radius of Isles of Shoals Light since it is known that JATO racks and associated debris exist in the area.

NOTE J
DEEPWATER PORTS
The Neptune and Northeast Gateway Deepwater Ports are encompassed by multiple boundaries including an Area to Be Avoided, No Anchoring Areas, Regulated Navigation Areas, and Safety and Security Zones. Refer to chart 13267.

NOTE F
(Protected area 15 CFR 922)
The following activities are prohibited within the Stellwagen Bank Marine Sanctuary:

- Certain discharging or dumping
- Industrial exploring or developing
- Drilling and dredging
- Removing historical artifacts
- Lighting

Refer to 15 CFR 922 for details of Sanctuary regulations.

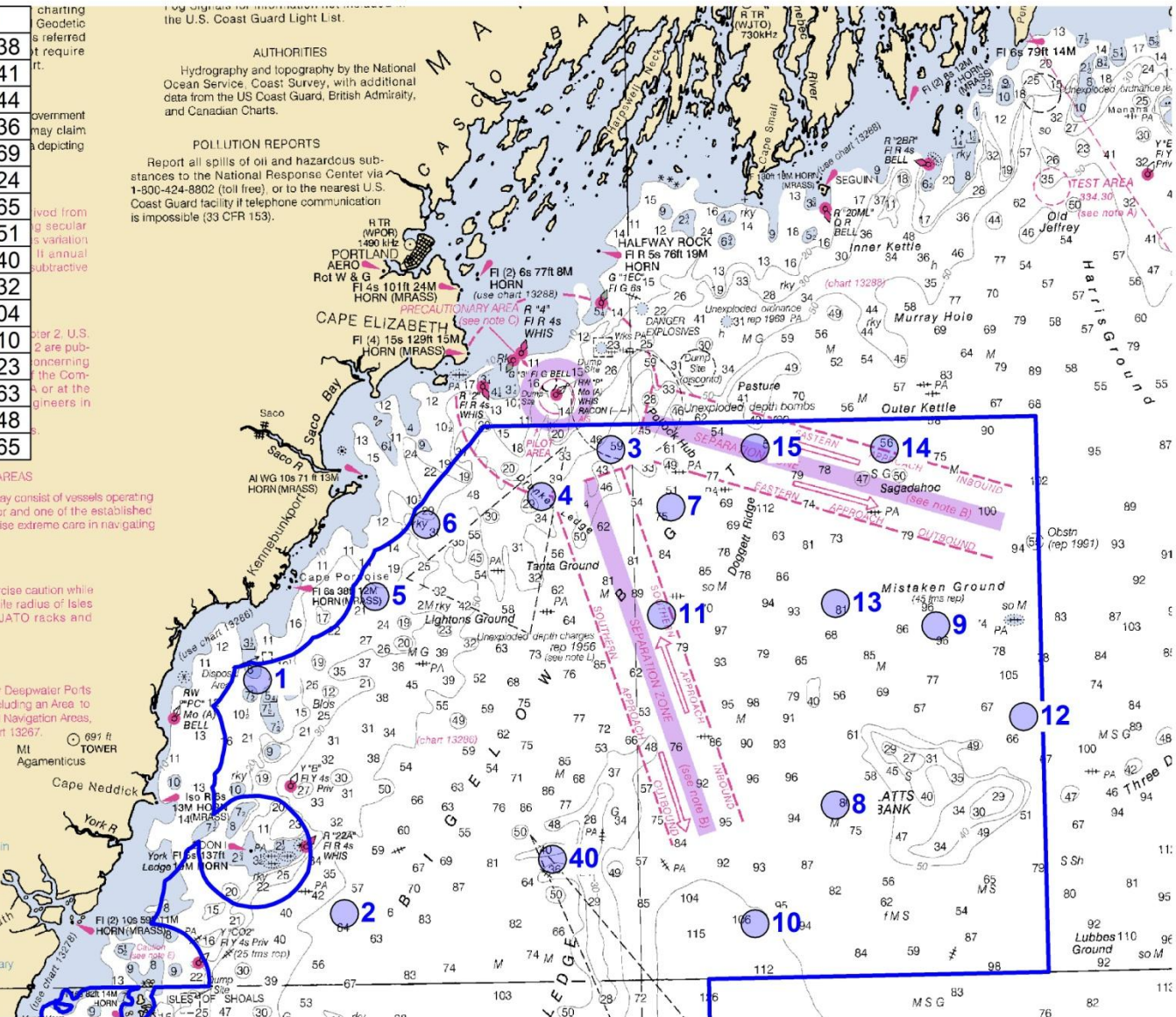
Hydrography and topography by the National Ocean Service, Coast Survey, with additional data from the US Coast Guard, British Admiralty, and Canadian Charts.

AUTHORITIES

Hydrography and topography by the National Ocean Service, Coast Survey, with additional data from the US Coast Guard, British Admiralty, and Canadian Charts.

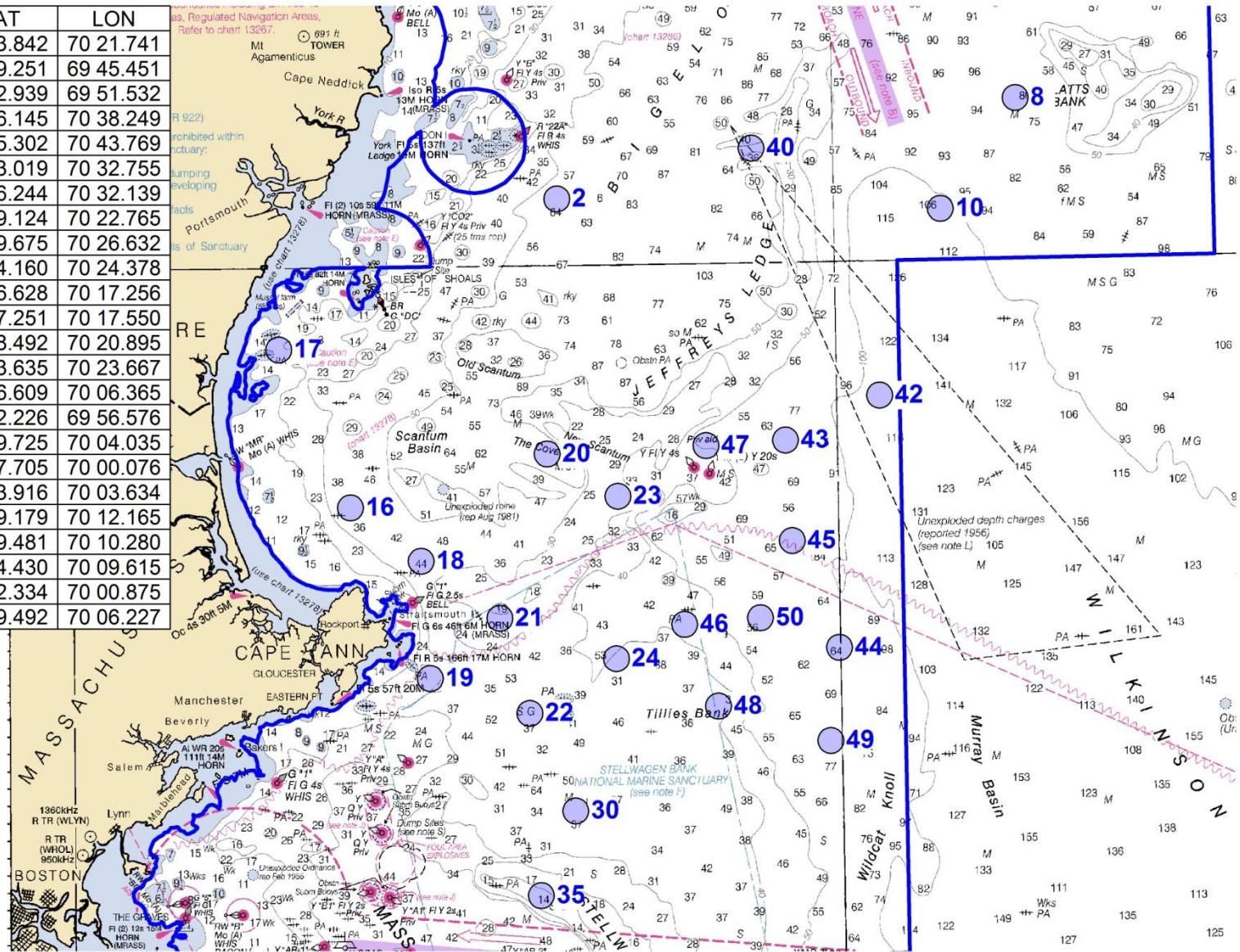
POLLUTION REPORTS

Report all spills of oil and hazardous substances to the National Response Center via 1-800-424-8802 (toll free), or to the nearest U.S. Coast Guard facility if telephone communication is impossible (33 CFR 153).



Industry Based Survey Tow Locations - July 2017

TOW	LAT	LON
2	43 03.842	70 21.741
8	43 09.251	69 45.451
10	43 02.939	69 51.532
16	42 46.145	70 38.249
17	42 55.302	70 43.769
18	42 43.019	70 32.755
19	42 36.244	70 32.139
20	42 49.124	70 22.765
21	42 39.675	70 26.632
22	42 34.160	70 24.378
23	42 46.628	70 17.256
24	42 37.251	70 17.550
30	42 28.492	70 20.895
35	42 23.635	70 23.667
40	43 06.609	70 06.365
42	42 52.226	69 56.576
43	42 49.725	70 04.035
44	42 37.705	70 00.076
45	42 43.916	70 03.634
46	42 39.179	70 12.165
47	42 49.481	70 10.280
48	42 34.430	70 09.615
49	42 32.334	70 00.875
50	42 39.492	70 06.227



Industry Based Survey Tow Locations - July 2017

