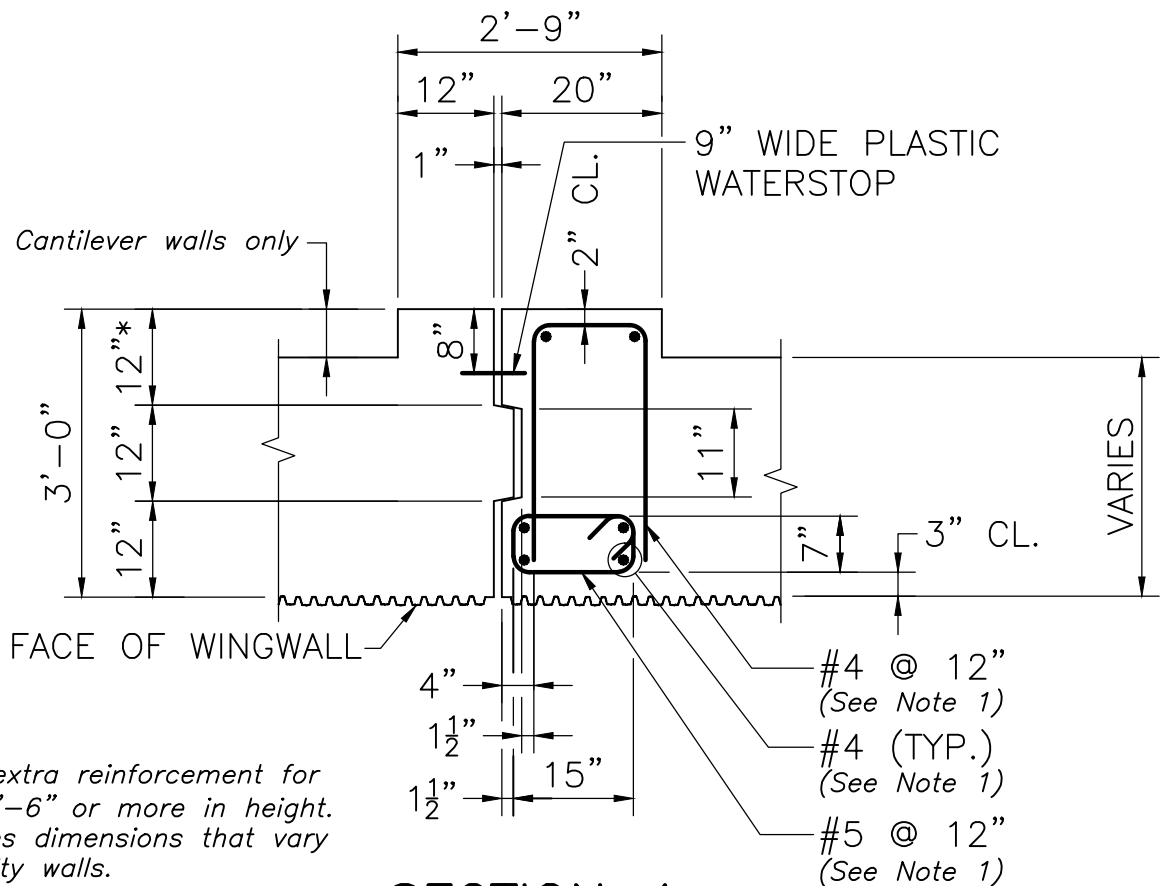


## WINGWALL ELEVATION

SCALE:  $\frac{1}{4}" = 1'-0"$



**NOTES:**

1. Include extra reinforcement for walls 13'-6" or more in height.
2. \* Denotes dimensions that vary for gravity walls.

## SECTION 4

SCALE:  $\frac{1}{2}" = 1'-0"$



LRFD BRIDGE  
MANUAL, PART II

# EXPANSION JOINT DETAILS

WINGWALL DETAILS

DATE OF ISSUE  
JUNE 2013

DRAWING NUMBER

**3.2.8**