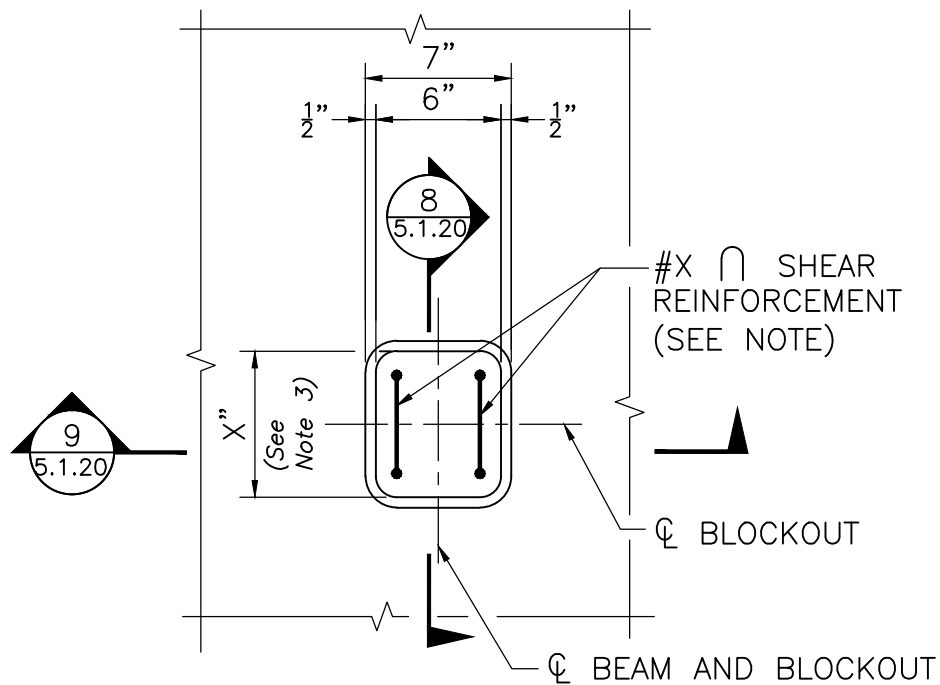


BLOCKOUT WITH STUD SHEAR CONNECTORS – PLAN

SCALE: $1\frac{1}{2}'' = 1'-0''$



BLOCKOUT WITH HORIZONTAL SHEAR REINFORCEMENT – PLAN

SCALE: $1\frac{1}{2}'' = 1'-0''$

NOTES:

1. Three shear studs shown. Actual number of shear studs shall be as per design.
2. The dimension of the blockouts along the CL of beams may be increased to allow for multiple rows of studs. See Large Blockout detail on Dwg. No. 5.1.19.
3. Designer to provide this dimension as small as practical to account for transverse (primary) reinforcement placement. Bars may be bundled to provide maximum size blockouts.



LRFD BRIDGE

MANUAL, PART III

BLOCKOUT WITH STUD SHEAR
CONNECTORS – PLAN
BLOCKOUT WITH HORIZ. SHEAR
REINFORCEMENT – PLAN
PRECAST CONCRETE DECK PANELS

DATE OF ISSUE

JUNE 2013

DRAWING NUMBER

5.1.16