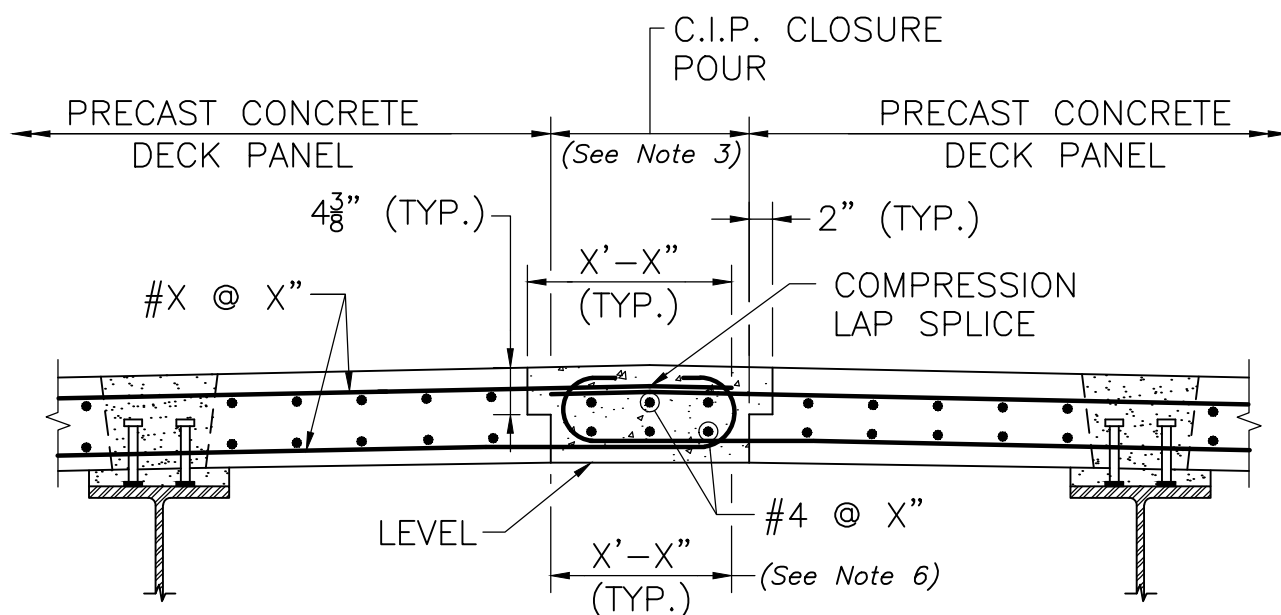


NOTE:

REINFORCING BARS EXTENDING FROM THE EDGE OF DECK MAY BE USED IN LIEU OF MECHANICAL REINFORCING BAR SPLICERS

OPTION 1



OPTION 2

CAST-IN-PLACE CLOSURE POUR – DETAILS

SCALE: $\frac{3}{4}'' = 1'-0''$

NOTES:

1. Option 2 may be used to reduce the width of the closure pour.
2. For C.I.P. Closure Pour Construction Notes see Dwg. No. 5.1.22.
3. For closure pour at abutments see Dwg. No's. 1.1.20, 1.1.21 and 2.1.4.
4. For closure pour at the pier see Dwg. No's. 4.1.11 and 4.1.13.
5. Nominal width of closure pour $X'-X''$ equals Class C Splice + 4".
6. Nominal width of closure pour $X'-X''$ equals hooked bar splice length + 4".



LRFD BRIDGE

MANUAL, PART III

**CAST-IN-PLACE
CLOSURE POUR DETAILS
PRECAST CONCRETE DECK PANELS**

DATE OF ISSUE
JUNE 2013

DRAWING NUMBER

5.1.21