

**NOTE:**

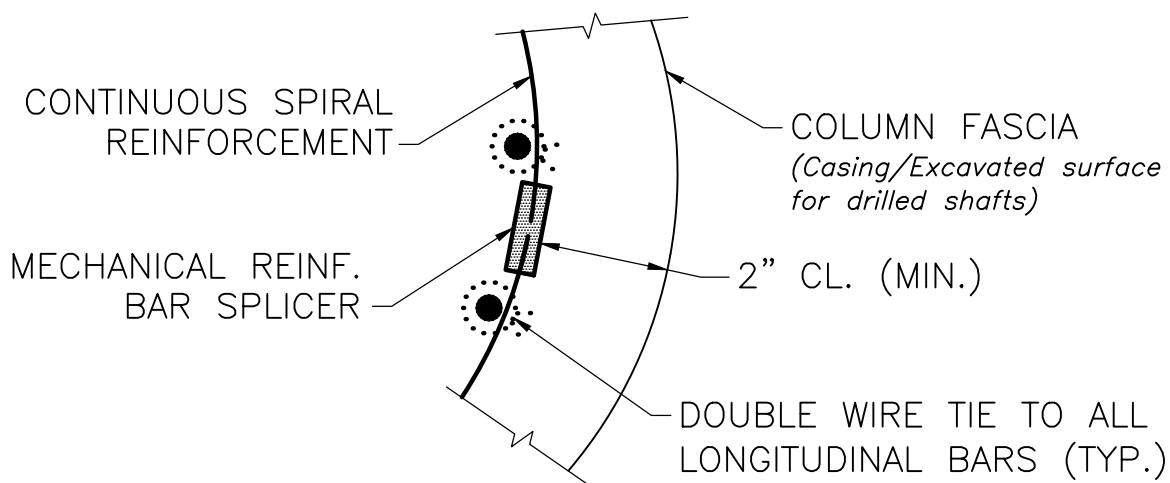
NON-METALLIC CENTERING DEVICES TO BE PLACED AT 1/4 POINTS IN COLUMN. DETAILS OF ALTERNATIVE CENTERING DEVICES MUST BE SUBMITTED TO AND APPROVED BY THE DIRECTOR OF BRIDGES AND STRUCTURES.

**NOTE:**

Include non-metallic centering device detail from Dwg. No. 3.6.10 on Construction Drawings.

**SECTION 2**

SCALE:  $\frac{3}{4}" = 1'-0"$



**SPIRAL REINFORCEMENT SPLICE DETAIL**

NOT TO SCALE

**NOTE:**

This detail is also applicable to the drilled shafts.  
(See Note 9 on Dwg. No. 3.6.11)