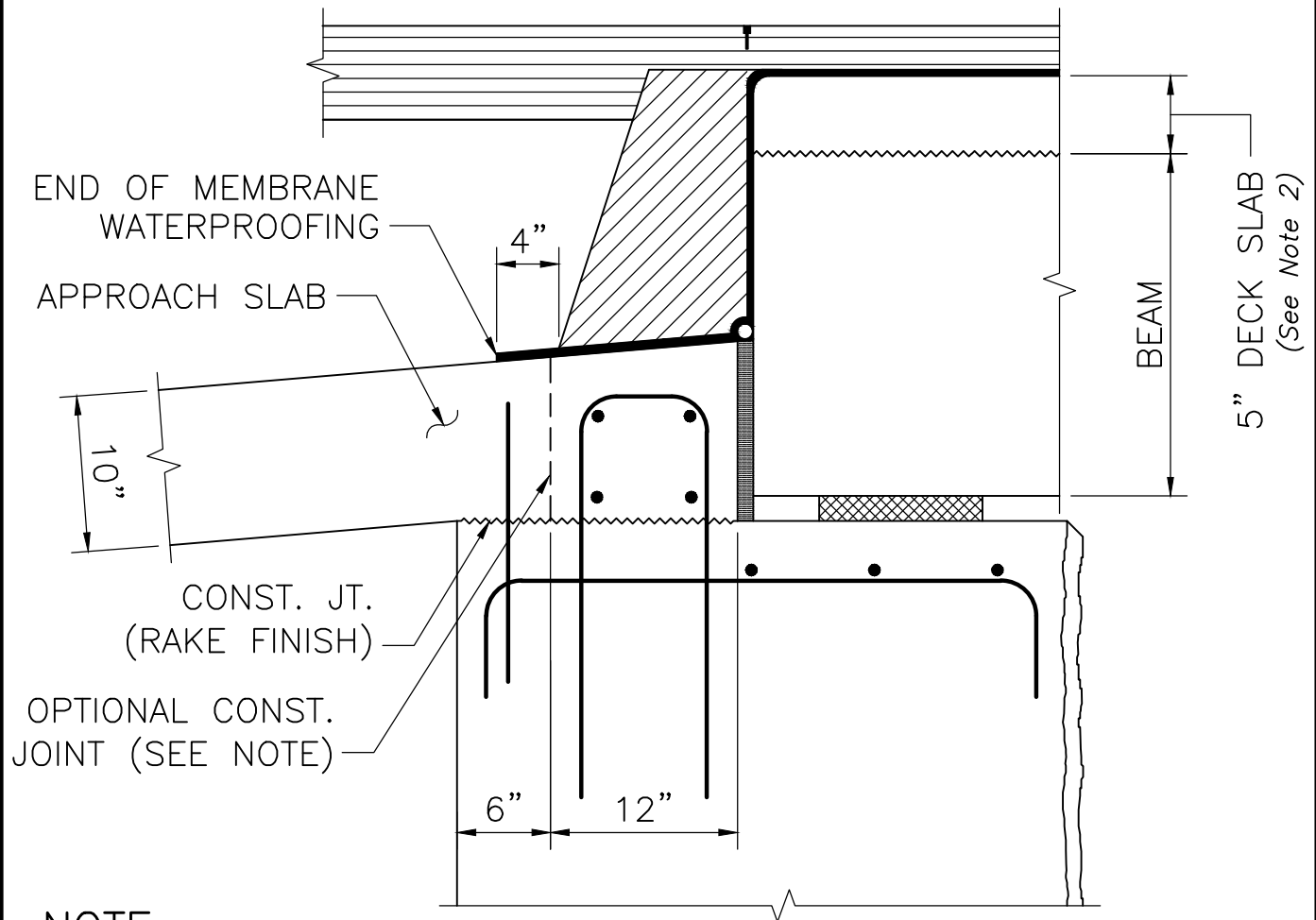


MODIFICATIONS FOR 18" AND 21" DEEP DECK BEAMS:



NOTE:

IF THE APPROACH SLAB IS POURED MONOLITHICALLY WITH THE BACKWALLS, MAKE A 2" DEEP BY $\frac{1}{8}$ " WIDE SAWCUT IN THE TOP OF THE SLAB AT THE OPTIONAL CONSTRUCTION JOINT LOCATION. FILL SAWCUT WITH CONCRETE JOINT SEALER.

DETAILS AT ABUTMENT – ROADWAY SECTION

SCALE: 1" = 1'-0"

NOTES:

1. For 18" and 21" deep beams, modify Dwg. No. 4.4.9 to the reinforcing and construction joint details shown above. Add the note above to the Construction Notes. All other items not detailed or designated above shall be as shown on Dwg. No. 4.4.9.
2. The thickness of the deck slab may need to be increased to accommodate roadway profile.



LRFD BRIDGE
MANUAL, PART II

ROADWAY SECTION FOR 18"
& 21" DEEP DECK BEAMS
ABUTMENT DETAILS

DATE OF ISSUE
JUNE 2013

DRAWING NUMBER

4.4.10