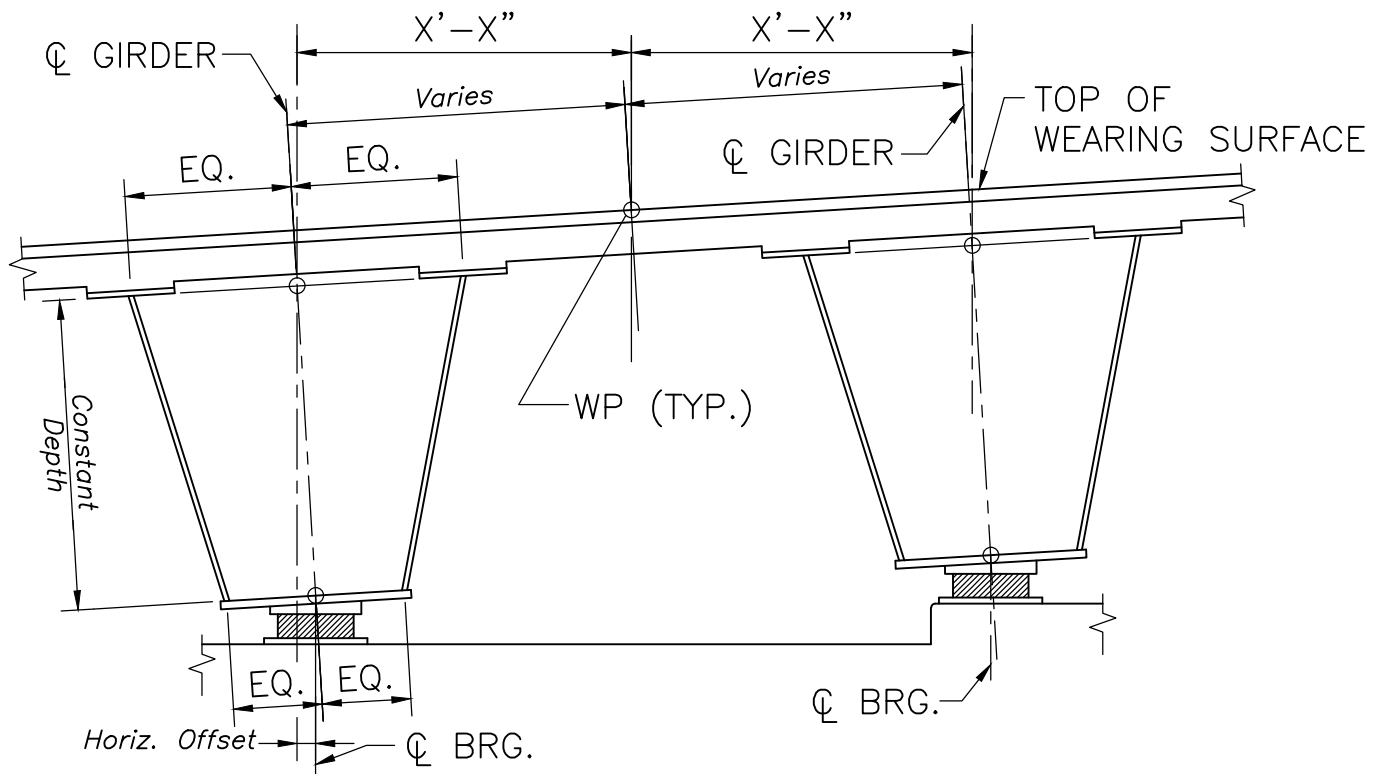


## CROWNED ROADWAY SECTION

SCALE:  $\frac{1}{4}" = 1'-0"$



## SUPERELEVATED ROADWAY SECTION

SCALE:  $\frac{1}{4}" = 1'-0"$

### NOTES:

1. Rotate boxes to follow cross slope.
2. Maintain constant trapezoidal shape.
3. WP indicates working point. Working points shall be defined on Construction Drawings.



LRFD BRIDGE  
MANUAL, PART II

## TYPICAL GEOMETRY

STEEL BOX GIRDERS

DATE OF ISSUE  
JUNE 2013

DRAWING NUMBER

**5.3.2**