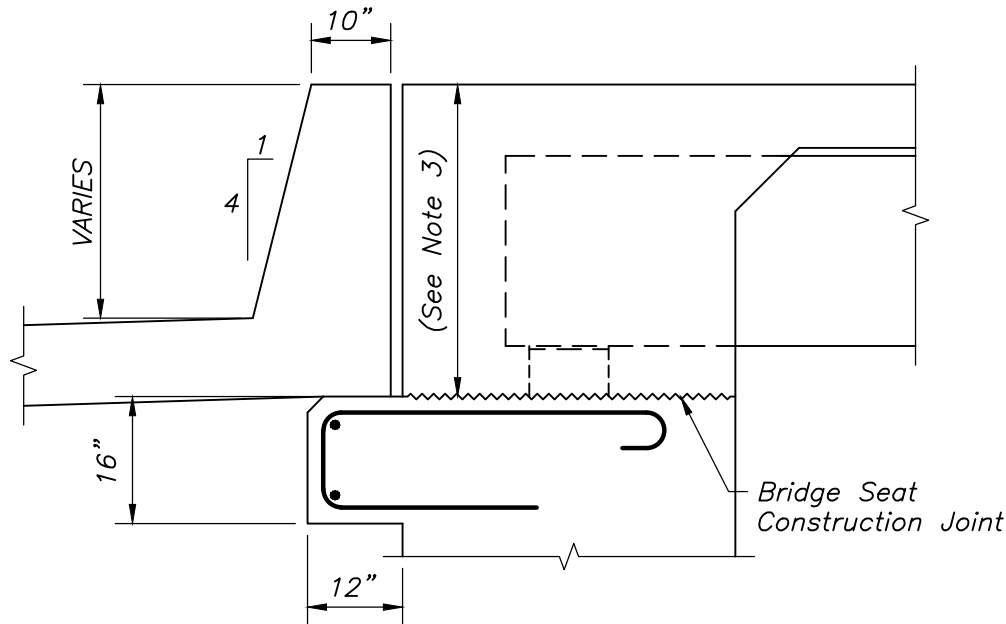


### APPROACH SLAB BRACKET ABOVE BRIDGE SEAT CONSTRUCTION JOINT



### APPROACH SLAB BRACKET BELOW BRIDGE SEAT CONSTRUCTION JOINT

#### NOTES:

1. Modify Dwg. No's. 12.2.1 through 12.2.6 and 3.1.14 according to requirements of Dwg. No. 12.2.8.
2. Approach Slab Bracket shall be 16" deep. If bracket of this dimension will not fit above the bridge seat construction joint, relocate entire bracket below bridge seat construction joint and modify approach slab as shown in the detail below.
3. Minimum depth shall be 2'-0". Top of approach slab shall match top of abutment diaphragm.



LRFD BRIDGE  
MANUAL, PART II

## APPROACH SLAB BRACKET

INTEGRAL ABUTMENTS

DATE OF ISSUE  
JUNE 2013

DRAWING NUMBER

**12.2.8**