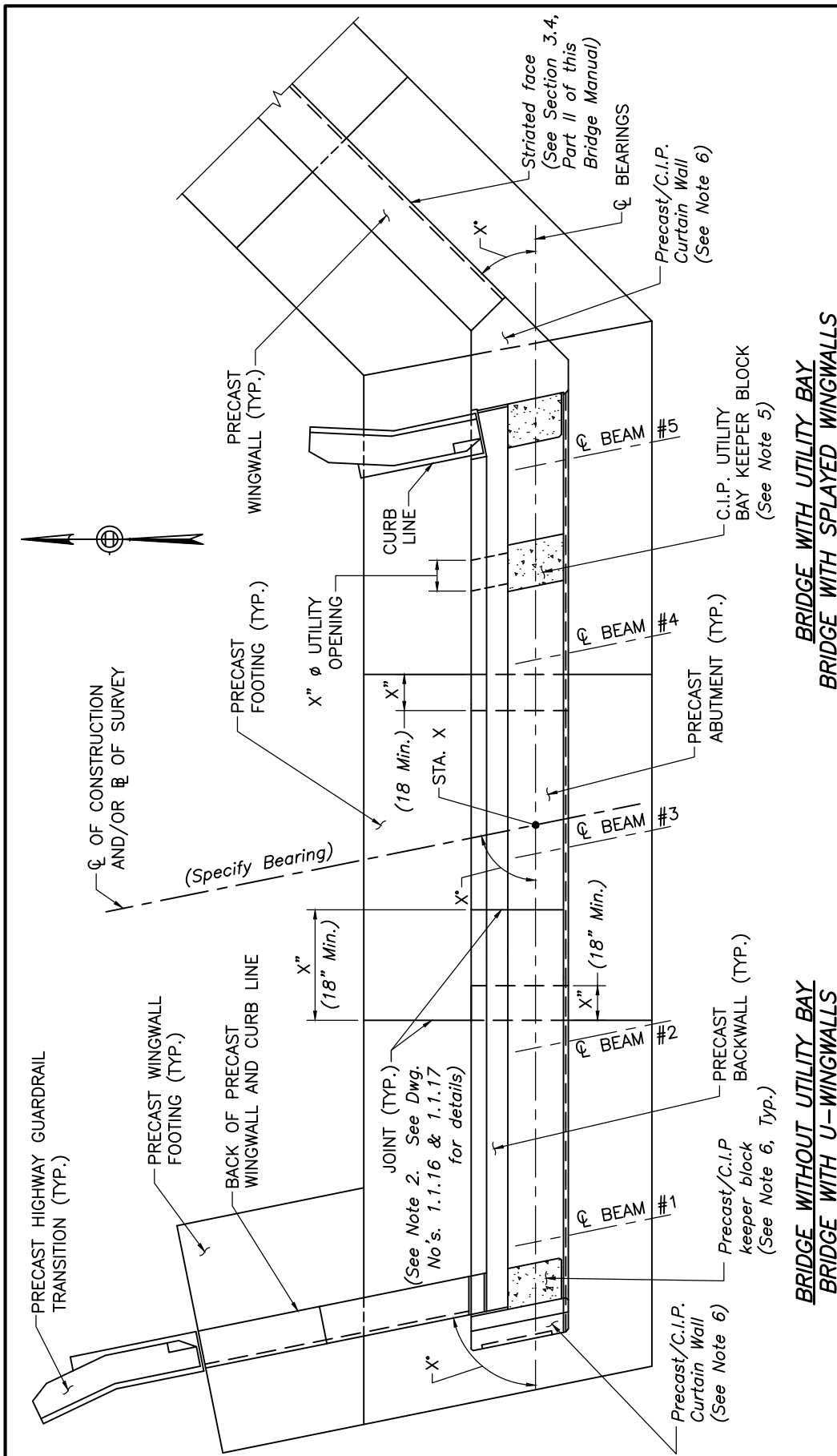


ABUTMENT PLAN

PRECAST ABUTMENTS

DATE OF ISSUE
 JUNE 2013

DRAWING NUMBER
1.1.1



BRIDGE WITH UTILITY BAY
BRIDGE WITH SPLAYED WINGWALLS

ABUTMENT PLAN
 SCALE: 1/4" = 1'-0"

BRIDGE WITHOUT UTILITY BAY
BRIDGE WITH U-WINGWALLS

- NOTES:**
1. The Plan of each abutment shall be provided as shown, without breaks and to scale, on the Construction Drawings and it shall be aligned with its Elevation view. The location of all joints shall be shown on both abutment views, as well.
 2. Joints shall be set perpendicular to the centerline of bearings. For situations where due to the skew and the distance between construction stages a square joint will not fit, the joint may be angled up to a maximum 20° (see Dwg. No. 1.1.16 for details).
 3. All dimensions and other relevant information as specified on Dwg. No. 3.1.1, Part II of this Bridge Manual, shall be shown on the Construction Drawings.
 4. Abutment Plan with Pavement Sawcut and Asphaltic Bridge Joint at safety curb is shown. Modify the drawing as required for bridge with sidewalk and/or Strip Seal Joint.
 5. C.I.P. utility bay keeper block is for adjacent beam systems with utility bays under sidewalk only.
 6. The Designer shall specify the preferred method of construction.