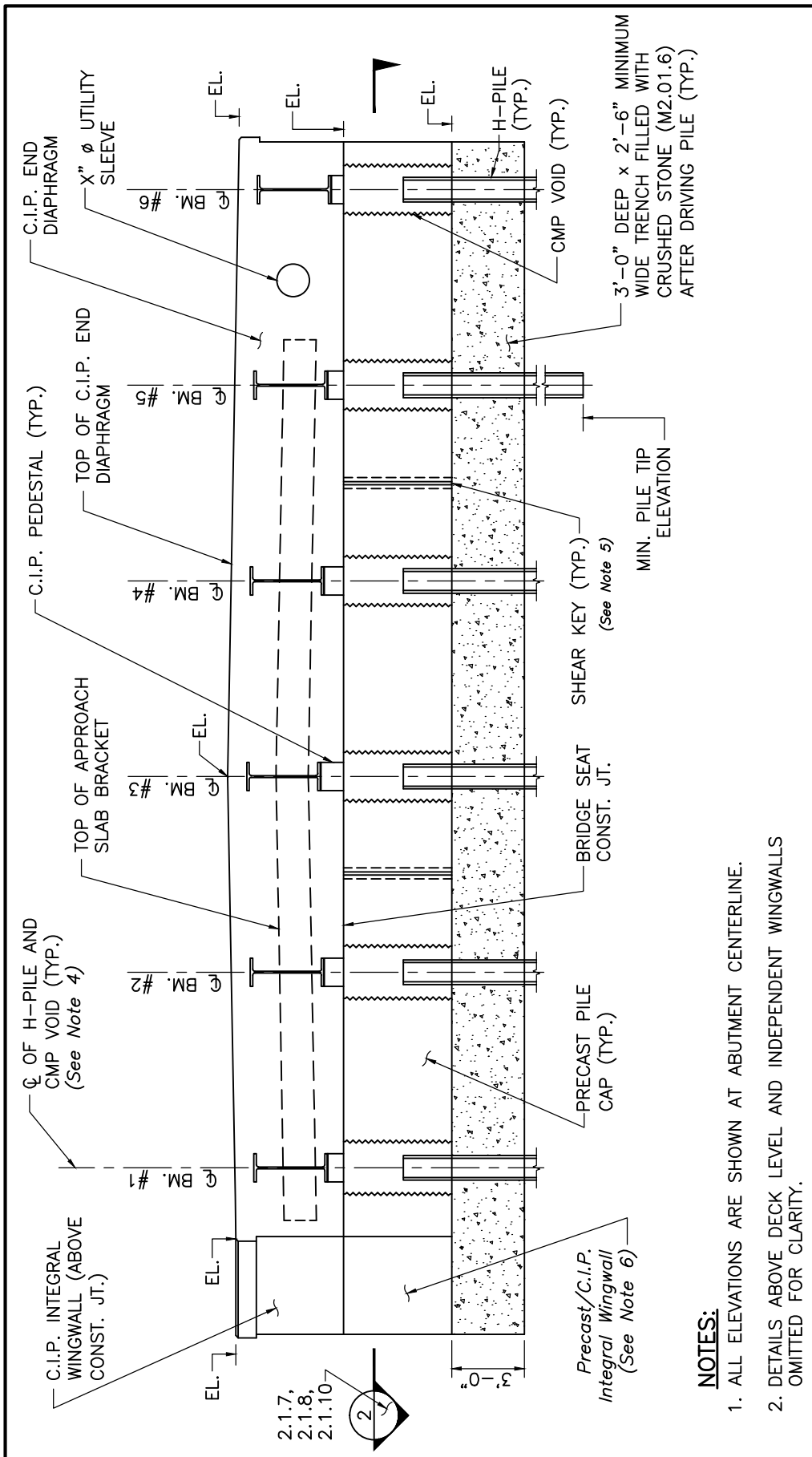


**SECTION AT CENTERLINE
 OF ABUTMENT
 PRECAST INTEGRAL ABUTMENTS**

DATE OF ISSUE
 JUNE 2013

DRAWING NUMBER
2.1.2



SECTION 1
 SCALE: 1" = 1'-0"

TOP OF PEDESTAL ELEVATIONS			
BM. #1	XX.XX	BM. #4	XX.XX
BM. #2	XX.XX	BM. #5	XX.XX
BM. #3	XX.XX	BM. #6	XX.XX

NOTES:

1. ALL ELEVATIONS ARE SHOWN AT ABUTMENT CENTERLINE.
2. DETAILS ABOVE DECK LEVEL AND INDEPENDENT WINGWALLS OMITTED FOR CLARITY.

NOTES:

1. Provide top of pedestal elevations to nearest 0.01 ft.
2. Rolled beams are shown. Show actual beam type and position of the beams relative to the piles at the centerline of the abutment.
3. Show steps in the bridge seat, if any, centered between stringers.
4. Additional CMP voids may be provided, if feasible, to reduce the weight of the precast integral abutment pile cap sections. In this case, the Designer shall provide sufficient amount of required reinforcement and detail it accordingly.
5. For abutment shear key, see Dwg. No. 1.1.16, Part III of this Bridge Manual.
6. The Designer shall specify preferred method of construction.

NOTE:

ELEVATIONS DO NOT INCLUDE ERECTION PAD THICKNESS.