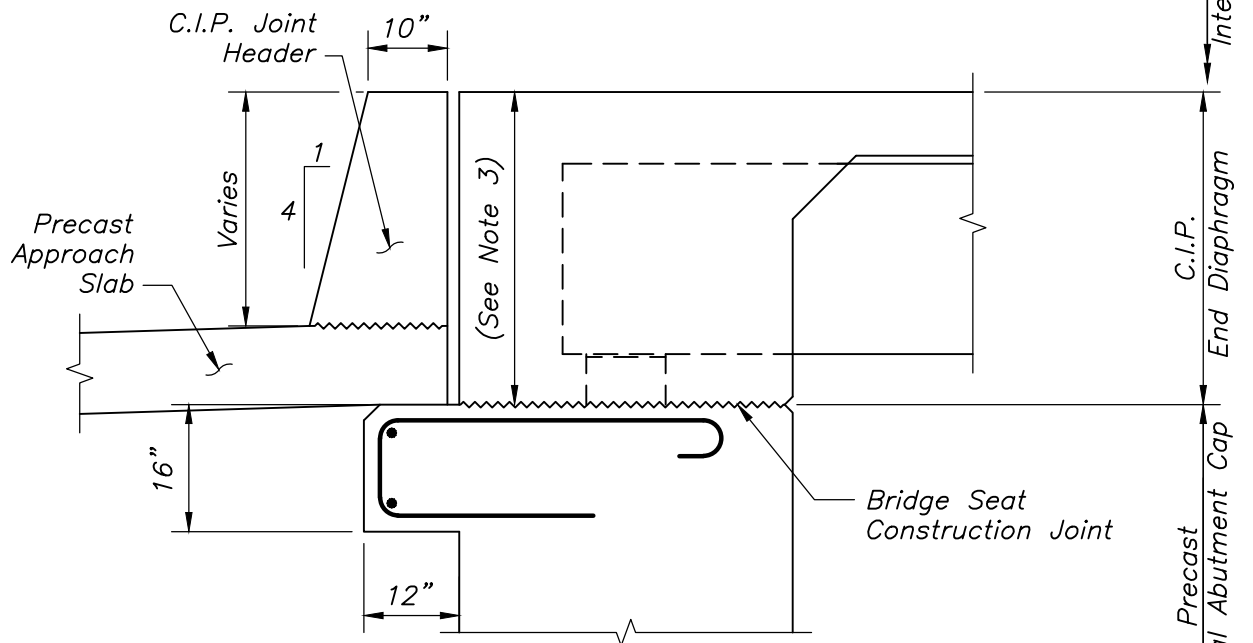


**APPROACH SLAB BRACKET ABOVE
BRIDGE SEAT CONSTRUCTION JOINT**



**APPROACH SLAB BRACKET BELOW
BRIDGE SEAT CONSTRUCTION JOINT**

NOTES:

1. Modify Dwg. No's. 2.1.4 and 2.1.6 according to the above details.
2. Approach Slab Bracket shall be 16" deep. If bracket of this dimension will not fit above the bridge seat construction joint, relocate entire bracket below bridge seat construction joint and modify approach slab as shown in the detail below.
3. Minimum depth shall be 2'-0". Top of approach slab shall match top of abutment diaphragm.



LRFD BRIDGE

MANUAL, PART III

APPROACH SLAB BRACKET

PRECAST INTEGRAL ABUTMENTS

DATE OF ISSUE
JUNE 2013

DRAWING NUMBER

2.1.5